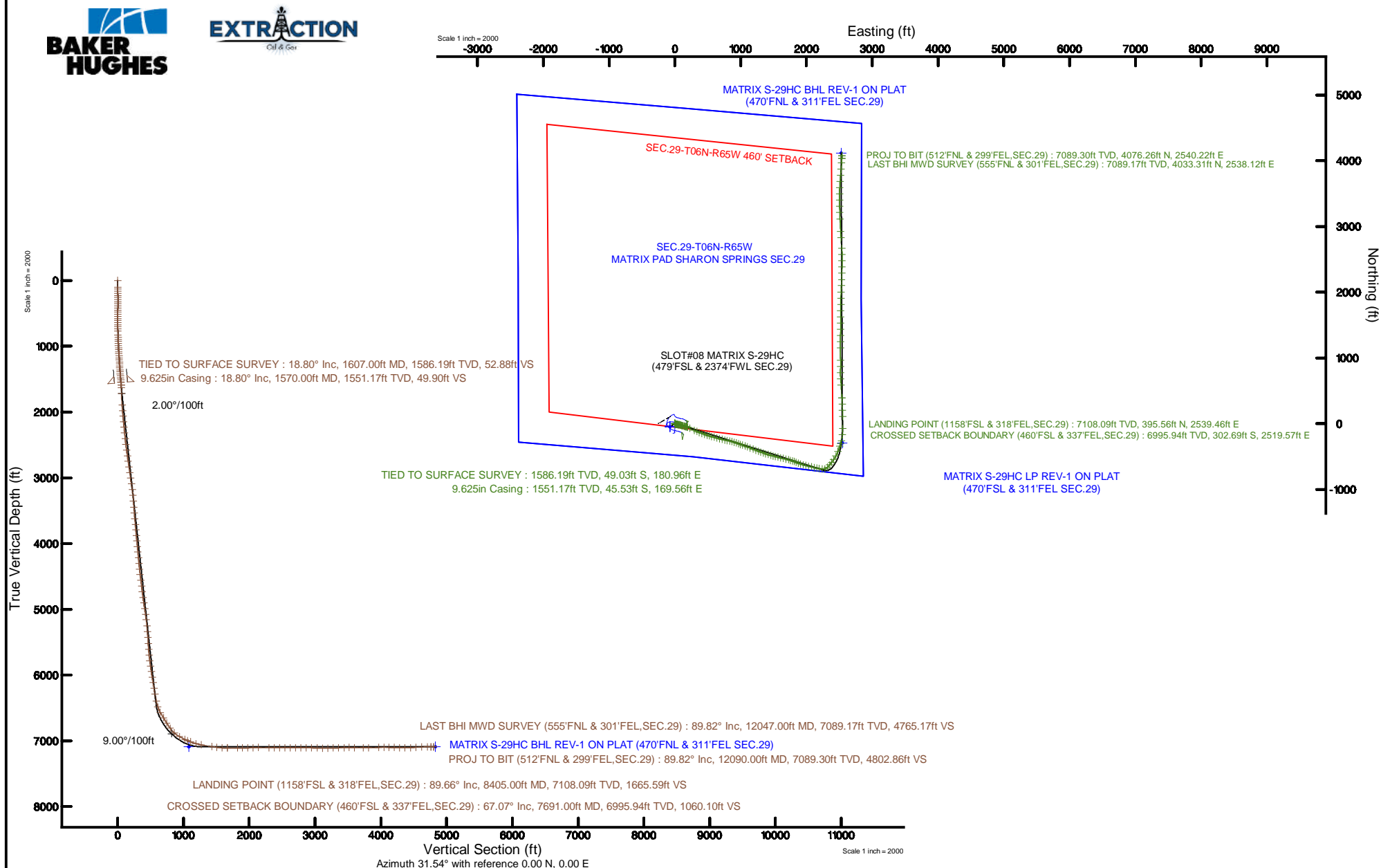


Location:	COLORADO	Slot:	SLOT#08 MATRIX S-29HC (479'FSL & 2374'FWL SEC.29)
Field:	WELD COUNTY (NAD83/TRUE NORTH)	Well:	MATRIX S-29HC
Facility:	SEC.29-T06N-R65W	Wellbore:	MATRIX S-29HC PWB

Plot reference wellpath is MATRIX S-29HC REV-A-0 PWP	Grid System: NAD83 / Lambert Colorado SP, Northern Zone (501), US feet
True vertical depths are referenced to H&P 321 (RKB)	* - Wellpath was transformed from a different geodetic datum
Measured depths are referenced to H&P 321 (RKB)	North Reference: True north
H&P 321 (RKB) to Mean Sea Level: 4737 feet	Scale: True distance
Mean Sea Level to Mud line (AI Slot: SLOTH08 MATRIX S-29HC (479FSL & 2374FWL SEC.29): 0.29)	Depths are in feet
Coordinates are in feet referenced to Slot	Created by: hutsaerj on 2017-02-22
	Database: WA_DEN_Devel_Dept





Actual Wellpath Report

MATRIX S-29HC AWP

Page 1 of 7



REFERENCE WELLPATH IDENTIFICATION

Operator	EXTRACTION OIL & GAS	Slot	SLOT#08 MATRIX S-29HC (479'FSL & 2374'FWL SEC.29)
Area	COLORADO	Well	MATRIX S-29HC
Field	WELD COUNTY (NAD83/TRUE NORTH)	Wellbore	MATRIX S-29HC AWP
Facility	SEC.29-T06N-R65W		

REPORT SETUP INFORMATION

Projection System	NAD83 / Lambert Colorado SP, Northern Zone (501), US feet	Software System	WellArchitect® 5.0
North Reference	True	User	Hutaedr
Scale	0.999963	Report Generated	22/Feb/2017 at 10:06
Convergence at slot	0.53° East	Database/Source file	WA_DEN_Denver_Defn/MATRIX_S-29HC_AWP.xml

WELLPATH LOCATION

	Local coordinates		Grid coordinates		Geographic coordinates	
	North[ft]	East[ft]	Easting[US ft]	Northing[US ft]	Latitude	Longitude
Slot Location	45.94	77.31	3225919.56	1408803.32	40°27'09.821"N	104°41'17.470"W
Facility Reference Pt			3225842.68	1408756.67	40°27'09.367"N	104°41'18.470"W
Field Reference Pt			3185481.27	1419166.81	40°28'55.560"N	104°49'59.556"W

WELLPATH DATUM

Calculation method	Minimum curvature	H&P 321 (RKB) to Facility Vertical Datum	4737.00ft
Horizontal Reference Pt	Slot	H&P 321 (RKB) to Mean Sea Level	4737.00ft
Vertical Reference Pt	H&P 321 (RKB)	H&P 321 (RKB) to Mud Line at Slot (SLOT#08 MATRIX S-29HC (479'FSL & 2374'FWL SEC.29))	4737.00ft
MD Reference Pt	H&P 321 (RKB)	Section Origin	N 0.00, E 0.00 ft
Field Vertical Reference	Mean Sea Level	Section Azimuth	31.54°



Actual Wellpath Report

MATRIX S-29HC AWP
Page 2 of 7



REFERENCE WELLPATH IDENTIFICATION			
Operator	EXTRACTION OIL & GAS	Slot	SLOT#08 MATRIX S-29HC (479'FSL & 2374'FWL SEC.29)
Area	COLORADO	Well	MATRIX S-29HC
Field	WELD COUNTY (NAD83/TRUE NORTH)	Wellbore	MATRIX S-29HC AWP
Facility	SEC.29-T06N-R65W		

WELLPATH DATA (155 stations)										
MD [ft]	Inclination [°]	Azimuth [°]	TVD [ft]	Vert Sect [ft]	North [ft]	East [ft]	Latitude	Longitude	DLS [°/100ft]	Comments
0.00	0.000	359.700	0.00	0.00	0.00	0.00	40°27'09.821°N	104°41'17.470°W	0.00	
100.00	1.000	359.700	99.99	0.74	0.87	0.00	40°27'09.830°N	104°41'17.470°W	1.00	
131.00	1.000	1.100	130.99	1.20	1.41	0.00	40°27'09.835°N	104°41'17.470°W	0.08	
164.00	1.000	358.400	163.99	1.69	1.99	0.00	40°27'09.841°N	104°41'17.470°W	0.14	
195.00	1.100	0.400	194.98	2.17	2.56	-0.01	40°27'09.846°N	104°41'17.470°W	0.34	
227.00	1.100	358.600	226.97	2.70	3.17	-0.01	40°27'09.852°N	104°41'17.470°W	0.11	
259.00	1.200	356.600	258.97	3.23	3.81	-0.04	40°27'09.859°N	104°41'17.471°W	0.34	
291.00	1.200	358.700	290.96	3.78	4.48	-0.07	40°27'09.865°N	104°41'17.471°W	0.14	
322.00	0.700	353.200	321.96	4.21	5.00	-0.10	40°27'09.870°N	104°41'17.471°W	1.64	
354.00	0.900	174.200	353.96	4.16	4.94	-0.10	40°27'09.870°N	104°41'17.471°W	5.00	
386.00	2.000	175.600	385.94	3.51	4.13	-0.03	40°27'09.862°N	104°41'17.470°W	3.44	
418.00	2.300	171.900	417.92	2.56	2.94	0.11	40°27'09.850°N	104°41'17.469°W	1.03	
450.00	2.500	166.000	449.89	1.58	1.63	0.36	40°27'09.837°N	104°41'17.465°W	0.99	
481.00	2.500	167.600	480.86	0.62	0.31	0.67	40°27'09.824°N	104°41'17.461°W	0.23	
513.00	2.500	150.200	512.83	-0.22	-0.98	1.17	40°27'09.811°N	104°41'17.455°W	2.36	
545.00	3.100	123.700	544.80	-0.59	-2.06	2.24	40°27'09.801°N	104°41'17.441°W	4.41	
577.00	3.800	116.000	576.74	-0.52	-3.01	3.91	40°27'09.791°N	104°41'17.419°W	2.62	
609.00	4.000	110.300	608.67	-0.20	-3.86	5.91	40°27'09.783°N	104°41'17.394°W	1.36	
640.00	3.900	108.900	639.59	0.24	-4.58	7.92	40°27'09.776°N	104°41'17.368°W	0.45	
672.00	3.900	103.600	671.52	0.82	-5.18	10.01	40°27'09.770°N	104°41'17.341°W	1.13	
704.00	3.900	104.300	703.44	1.48	-5.71	12.12	40°27'09.765°N	104°41'17.313°W	0.15	
736.00	4.000	100.200	735.37	2.20	-6.18	14.27	40°27'09.760°N	104°41'17.285°W	0.94	
768.00	4.000	98.200	767.29	3.05	-6.53	16.48	40°27'09.756°N	104°41'17.257°W	0.44	
832.00	4.100	98.000	831.13	4.85	-7.17	20.95	40°27'09.750°N	104°41'17.199°W	0.16	
863.00	4.900	99.400	862.03	5.79	-7.54	23.36	40°27'09.746°N	104°41'17.168°W	2.60	
895.00	6.400	100.800	893.88	6.94	-8.10	26.46	40°27'09.741°N	104°41'17.128°W	4.71	
927.00	7.400	102.700	925.65	8.24	-8.88	30.22	40°27'09.733°N	104°41'17.079°W	3.20	
959.00	7.900	102.100	957.36	9.63	-9.80	34.38	40°27'09.724°N	104°41'17.025°W	1.58	
991.00	8.300	100.400	989.04	11.20	-10.68	38.80	40°27'09.716°N	104°41'16.968°W	1.46	
1023.00	8.700	98.200	1020.69	12.99	-11.44	43.47	40°27'09.708°N	104°41'16.908°W	1.61	
1054.00	9.100	100.700	1051.32	14.79	-12.23	48.20	40°27'09.700°N	104°41'16.847°W	1.79	
1086.00	10.500	100.700	1082.85	16.73	-13.24	53.55	40°27'09.690°N	104°41'16.777°W	4.37	
1118.00	11.000	103.100	1114.29	18.73	-14.47	59.39	40°27'09.678°N	104°41'16.702°W	2.10	
1150.00	11.300	101.500	1145.68	20.77	-15.79	65.43	40°27'09.665°N	104°41'16.624°W	1.35	
1182.00	11.700	100.200	1177.04	23.03	-16.99	71.70	40°27'09.653°N	104°41'16.543°W	1.49	
1212.00	12.800	105.300	1206.36	25.07	-18.40	77.90	40°27'09.639°N	104°41'16.462°W	5.14	
1243.00	13.400	108.200	1236.55	26.86	-20.43	84.62	40°27'09.619°N	104°41'16.375°W	2.87	
1275.00	13.700	108.500	1267.66	28.57	-22.79	91.74	40°27'09.596°N	104°41'16.283°W	0.96	
1307.00	13.800	107.700	1298.74	30.33	-25.16	98.97	40°27'09.572°N	104°41'16.190°W	0.67	
1337.00	14.000	105.200	1327.87	32.21	-27.20	105.88	40°27'09.552°N	104°41'16.100°W	2.11	
1369.00	14.600	103.300	1358.87	34.56	-29.14	113.54	40°27'09.533°N	104°41'16.001°W	2.38	
1401.00	15.700	106.100	1389.76	36.98	-31.27	121.62	40°27'09.512°N	104°41'15.897°W	4.13	
1432.00	16.400	107.900	1419.55	39.13	-33.78	129.82	40°27'09.487°N	104°41'15.791°W	2.77	
1464.00	16.600	107.200	1450.24	41.33	-36.52	138.48	40°27'09.460°N	104°41'15.679°W	0.88	
1496.00	17.000	105.100	1480.87	43.78	-39.09	147.37	40°27'09.435°N	104°41'15.564°W	2.27	

REFERENCE WELLPATH IDENTIFICATION

Operator	EXTRACTION OIL & GAS	Slot	SLOT#08 MATRIX S-29HC (479'FSL & 2374'FWL SEC.29)
Area	COLORADO	Well	MATRIX S-29HC
Field	WELD COUNTY (NAD83/TRUE NORTH)	Wellbore	MATRIX S-29HC AWP
Facility	SEC.29-T06N-R65W		

WELLPATH DATA (155 stations)

MD [ft]	Inclination [°]	Azimuth [°]	TVD [ft]	Vert Sect [ft]	North [ft]	East [ft]	Latitude	Longitude	DLS [°/100ft]	Comments
1528.00	18.300	105.900	1511.36	46.46	-41.68	156.72	40°27'09.409"N	104°41'15.443"W	4.13	
1559.00	18.800	107.100	1540.75	49.02	-44.48	166.17	40°27'09.381"N	104°41'15.320"W	2.03	
1607.00	18.800	107.100	1586.19	52.88	-49.03	180.96	40°27'09.336"N	104°41'15.129"W	0.00	TIED TO SURFACE SURVEY
1653.00	18.720	112.410	1629.75	55.90	-54.03	194.87	40°27'09.287"N	104°41'14.949"W	3.72	
1748.00	21.780	118.190	1718.88	59.35	-68.17	224.50	40°27'09.147"N	104°41'14.566"W	3.84	
1938.00	25.420	112.730	1892.98	67.66	-100.59	293.22	40°27'08.827"N	104°41'13.677"W	2.23	
2032.00	27.730	113.120	1977.04	73.96	-116.98	331.94	40°27'08.665"N	104°41'13.176"W	2.46	
2127.00	26.850	112.280	2061.47	80.65	-133.79	372.12	40°27'08.499"N	104°41'12.656"W	1.01	
2222.00	25.930	109.430	2146.57	88.46	-148.83	411.56	40°27'08.350"N	104°41'12.146"W	1.65	
2316.00	25.000	108.470	2231.44	97.27	-161.96	449.79	40°27'08.221"N	104°41'11.652"W	1.08	
2411.00	23.260	108.680	2318.13	105.98	-174.33	486.60	40°27'08.098"N	104°41'11.176"W	1.83	
2505.00	22.090	107.960	2404.87	114.27	-185.73	521.00	40°27'07.986"N	104°41'10.731"W	1.28	
2600.00	24.460	103.110	2492.14	124.68	-195.70	557.15	40°27'07.887"N	104°41'10.263"W	3.21	
2695.00	27.090	105.790	2577.68	136.78	-206.05	597.13	40°27'07.785"N	104°41'09.746"W	3.03	
2791.00	25.760	105.630	2663.65	148.43	-217.62	638.26	40°27'07.671"N	104°41'09.214"W	1.39	
2885.00	25.670	104.510	2748.34	159.99	-228.22	677.64	40°27'07.566"N	104°41'08.705"W	0.53	
2980.00	26.280	104.180	2833.74	172.30	-238.53	717.95	40°27'07.464"N	104°41'08.183"W	0.66	
3075.00	24.330	102.860	2919.62	184.84	-248.04	757.42	40°27'07.370"N	104°41'07.673"W	2.14	
3169.00	23.100	102.350	3005.68	197.11	-256.29	794.31	40°27'07.288"N	104°41'07.195"W	1.33	
3264.00	23.890	98.620	3092.81	210.73	-263.16	831.54	40°27'07.220"N	104°41'06.714"W	1.77	
3359.00	23.440	103.420	3179.83	224.10	-270.43	868.94	40°27'07.149"N	104°41'06.230"W	2.08	
3453.00	20.560	109.870	3266.99	233.26	-280.38	902.66	40°27'07.050"N	104°41'05.794"W	4.00	
3548.00	20.400	108.910	3355.99	240.25	-291.42	934.02	40°27'06.941"N	104°41'05.388"W	0.39	
3643.00	20.760	111.550	3444.93	246.80	-302.97	965.34	40°27'06.827"N	104°41'04.983"W	1.05	
3737.00	21.450	110.600	3532.62	252.95	-315.13	996.92	40°27'06.707"N	104°41'04.574"W	0.82	
3832.00	22.350	107.620	3620.77	260.59	-326.71	1030.40	40°27'06.592"N	104°41'04.141"W	1.51	
3927.00	23.780	110.770	3708.17	268.52	-338.97	1065.53	40°27'06.471"N	104°41'03.687"W	1.99	
4022.00	27.800	111.370	3793.69	276.02	-353.85	1104.08	40°27'06.324"N	104°41'03.188"W	4.24	
4117.00	28.360	110.770	3877.51	284.15	-369.92	1145.81	40°27'06.165"N	104°41'02.649"W	0.66	
4212.00	28.310	111.080	3961.13	292.45	-386.02	1187.92	40°27'06.006"N	104°41'02.104"W	0.16	
4306.00	27.530	110.910	4044.19	300.51	-401.79	1229.02	40°27'05.850"N	104°41'01.572"W	0.83	
4400.00	25.210	111.300	4128.40	308.08	-416.82	1267.97	40°27'05.702"N	104°41'01.069"W	2.47	
4495.00	23.590	110.590	4214.91	315.29	-430.86	1304.61	40°27'05.563"N	104°41'00.595"W	1.73	
4590.00	25.920	108.010	4301.18	323.76	-443.96	1342.16	40°27'05.434"N	104°41'00.109"W	2.70	
4685.00	23.170	107.880	4387.59	333.04	-456.12	1379.70	40°27'05.313"N	104°40'59.623"W	2.90	
4779.00	25.500	109.170	4473.23	341.74	-468.45	1416.42	40°27'05.192"N	104°40'59.148"W	2.54	
4874.00	25.460	104.020	4559.00	352.27	-480.11	1455.55	40°27'05.076"N	104°40'58.642"W	2.33	
4968.00	22.060	103.600	4645.02	363.80	-489.16	1492.32	40°27'04.987"N	104°40'58.167"W	3.62	
5063.00	23.550	105.420	4732.59	374.56	-498.40	1527.96	40°27'04.896"N	104°40'57.706"W	1.74	
5158.00	25.830	105.790	4818.90	385.45	-509.08	1566.17	40°27'04.790"N	104°40'57.211"W	2.41	
5252.00	27.160	103.180	4903.03	397.77	-519.54	1606.77	40°27'04.687"N	104°40'56.686"W	1.88	
5347.00	25.240	102.510	4988.27	411.21	-528.88	1647.66	40°27'04.594"N	104°40'56.157"W	2.04	
5441.00	26.330	106.330	5072.91	423.22	-539.08	1687.23	40°27'04.493"N	104°40'55.645"W	2.11	
5536.00	22.020	101.850	5159.57	434.75	-548.67	1724.90	40°27'04.399"N	104°40'55.158"W	4.93	
5631.00	19.220	108.400	5248.48	444.31	-557.26	1757.18	40°27'04.314"N	104°40'54.741"W	3.81	

REFERENCE WELLPATH IDENTIFICATION

Operator	EXTRACTION OIL & GAS	Slot	SLOT#08 MATRIX S-29HC (479'FSL & 2374'FWL SEC.29)
Area	COLORADO	Well	MATRIX S-29HC
Field	WELD COUNTY (NAD83/TRUE NORTH)	Wellbore	MATRIX S-29HC AWB
Facility	SEC.29-T06N-R65W		

WELLPATH DATA (155 stations) † = interpolated/extrapolated station

MD [ft]	Inclination [°]	Azimuth [°]	TVD [ft]	Vert Sect [ft]	North [ft]	East [ft]	Latitude	Longitude	DLS [°/100ft]	Comments
5726.00	20.060	103.590	5337.96	452.89	-566.03	1787.86	40°27'04.227"N	104°40'54.344"W	1.92	
5821.00	16.280	111.960	5428.22	460.13	-574.84	1816.06	40°27'04.140"N	104°40'53.979"W	4.83	
5915.00	19.530	113.570	5517.66	464.51	-586.05	1842.69	40°27'04.029"N	104°40'53.635"W	3.50	
6010.00	22.300	110.440	5606.39	470.18	-598.70	1874.14	40°27'03.904"N	104°40'53.228"W	3.14	
6105.00	23.270	109.490	5693.98	477.57	-611.25	1908.72	40°27'03.780"N	104°40'52.780"W	1.09	
6200.00	27.480	106.090	5779.80	487.34	-623.60	1947.49	40°27'03.658"N	104°40'52.279"W	4.69	
6295.00	28.250	104.860	5863.78	499.63	-635.44	1990.28	40°27'03.541"N	104°40'51.725"W	1.01	
6390.00	27.530	103.280	5947.75	512.96	-646.25	2033.38	40°27'03.434"N	104°40'51.168"W	1.09	
6484.00	28.330	103.670	6030.80	526.62	-656.51	2076.19	40°27'03.333"N	104°40'50.614"W	0.87	
6579.00	24.370	102.210	6115.91	540.03	-665.98	2117.27	40°27'03.239"N	104°40'50.083"W	4.22	
6674.00	26.200	101.820	6201.81	553.60	-674.43	2156.96	40°27'03.156"N	104°40'49.570"W	1.93	
6768.00	21.960	100.230	6287.61	566.99	-681.80	2194.58	40°27'03.083"N	104°40'49.083"W	4.56	
6888.00	24.330	95.100	6397.96	586.16	-687.99	2241.29	40°27'03.022"N	104°40'48.479"W	2.59	
6983.00	25.960	74.980	6484.11	610.02	-684.33	2280.95	40°27'03.058"N	104°40'47.966"W	9.12	
7077.00	30.170	47.150	6567.39	647.89	-662.83	2318.31	40°27'03.270"N	104°40'47.482"W	14.50	
7172.00	32.030	36.290	6648.80	696.03	-626.26	2350.75	40°27'03.631"N	104°40'47.063"W	6.21	
7267.00	31.660	39.330	6729.50	745.84	-586.67	2381.46	40°27'04.023"N	104°40'46.665"W	1.73	
7363.00	36.670	33.230	6808.94	799.50	-543.16	2413.17	40°27'04.453"N	104°40'46.255"W	6.32	
7458.00	46.800	29.130	6879.75	862.63	-489.03	2445.66	40°27'04.987"N	104°40'45.835"W	11.04	
7553.00	61.850	20.560	6935.06	938.87	-419.08	2477.45	40°27'05.679"N	104°40'45.424"W	17.43	
7648.00	64.150	20.240	6978.19	1021.91	-339.75	2506.95	40°27'06.462"N	104°40'45.042"W	2.44	
7691.00†	67.072	17.401	6995.94	1060.10	-302.69	2519.57	40°27'06.829"N	104°40'44.879"W	9.07	CROSSED SETBACK BOUNDARY (460'FSL & 337'FEL, SEC.29)
7742.00	70.600	14.190	7014.36	1105.86	-256.94	2532.50	40°27'07.281"N	104°40'44.711"W	9.07	
7837.00	76.080	3.480	7041.66	1189.60	-167.17	2546.32	40°27'08.168"N	104°40'44.532"W	12.24	
7932.00	79.640	1.140	7061.63	1270.62	-74.39	2550.05	40°27'09.085"N	104°40'44.484"W	4.45	
8121.00	83.920	358.880	7088.65	1430.00	112.61	2550.07	40°27'10.932"N	104°40'44.484"W	2.56	
8216.00	84.050	356.710	7098.61	1508.55	207.01	2546.43	40°27'11.865"N	104°40'44.530"W	2.28	
8311.00	87.410	358.900	7105.68	1587.32	301.66	2542.81	40°27'12.801"N	104°40'44.577"W	4.22	
8405.00	89.660	357.010	7108.09	1665.59	395.56	2539.46	40°27'13.728"N	104°40'44.620"W	3.13	LANDING POINT (1158'FSL & 318'FEL, SEC.29)
8595.00	90.460	355.650	7107.89	1820.82	585.16	2527.29	40°27'15.602"N	104°40'44.777"W	0.83	
8689.00	88.890	356.290	7108.42	1897.27	678.92	2520.69	40°27'16.529"N	104°40'44.863"W	1.80	
8784.00	92.830	0.440	7106.99	1976.74	773.84	2517.98	40°27'17.466"N	104°40'44.898"W	6.02	
8879.00	91.940	0.310	7103.04	2057.96	868.75	2518.60	40°27'18.404"N	104°40'44.890"W	0.95	
8973.00	89.720	359.700	7101.68	2138.06	962.73	2518.61	40°27'19.333"N	104°40'44.889"W	2.45	
9163.00	89.480	359.770	7103.01	2299.52	1152.73	2517.73	40°27'21.210"N	104°40'44.900"W	0.13	
9258.00	90.800	359.690	7102.77	2380.25	1247.72	2517.28	40°27'22.149"N	104°40'44.906"W	1.39	
9352.00	88.520	1.350	7103.33	2460.79	1341.71	2518.13	40°27'23.078"N	104°40'44.895"W	3.00	
9447.00	89.420	0.410	7105.04	2542.49	1436.68	2519.59	40°27'24.016"N	104°40'44.876"W	1.37	
9542.00	90.180	0.520	7105.37	2623.86	1531.68	2520.36	40°27'24.955"N	104°40'44.866"W	0.81	
9636.00	90.590	359.860	7104.74	2704.13	1625.67	2520.67	40°27'25.884"N	104°40'44.862"W	0.83	
9731.00	91.020	359.810	7103.40	2784.94	1720.66	2520.40	40°27'26.823"N	104°40'44.865"W	0.46	
9826.00	89.080	2.270	7103.32	2866.78	1815.63	2522.12	40°27'27.761"N	104°40'44.843"W	3.30	
9920.00	88.270	0.910	7105.49	2948.20	1909.57	2524.73	40°27'28.689"N	104°40'44.809"W	1.68	
10015.00	89.230	2.590	7107.57	3030.63	2004.50	2527.63	40°27'29.627"N	104°40'44.771"W	2.04	
10110.00	88.520	2.800	7109.43	3113.82	2099.37	2532.10	40°27'30.565"N	104°40'44.713"W	0.78	

REFERENCE WELLPATH IDENTIFICATION

Operator	EXTRACTION OIL & GAS	Slot	SLOT#08 MATRIX S-29HC (479'FSL & 2374'FWL SEC.29)
Area	COLORADO	Well	MATRIX S-29HC
Field	WELD COUNTY (NAD83/TRUE NORTH)	Wellbore	MATRIX S-29HC AWB
Facility	SEC.29-T06N-R65W		

WELLPATH DATA (155 stations)

MD [ft]	Inclination [°]	Azimuth [°]	TVD [ft]	Vert Sect [ft]	North [ft]	East [ft]	Latitude	Longitude	DLS [°/100ft]	Comments
10204.00	91.170	1.090	7109.69	3195.54	2193.31	2535.29	40°27'31.493"N	104°40'44.672"W	3.36	
10299.00	91.200	1.100	7107.72	3277.42	2288.27	2537.10	40°27'32.431"N	104°40'44.648"W	0.03	
10394.00	91.270	1.610	7105.67	3359.52	2383.22	2539.35	40°27'33.370"N	104°40'44.619"W	0.54	
10488.00	91.850	0.990	7103.12	3440.70	2477.16	2541.48	40°27'34.298"N	104°40'44.591"W	0.90	
10583.00	89.570	357.780	7101.94	3521.10	2572.13	2540.46	40°27'35.236"N	104°40'44.605"W	4.14	
10678.00	89.570	357.060	7102.65	3599.74	2667.03	2536.19	40°27'36.174"N	104°40'44.660"W	0.76	
10843.00	89.660	355.980	7103.76	3734.86	2831.72	2526.17	40°27'37.801"N	104°40'44.789"W	0.66	
10938.00	90.710	356.630	7103.45	3812.45	2926.52	2520.05	40°27'38.738"N	104°40'44.868"W	1.30	
11127.00	91.970	357.900	7099.03	3968.58	3115.25	2511.03	40°27'40.603"N	104°40'44.985"W	0.95	
11222.00	89.380	358.450	7097.91	4047.90	3210.18	2508.01	40°27'41.541"N	104°40'45.024"W	2.79	
11316.00	89.230	356.860	7099.05	4125.93	3304.09	2504.16	40°27'42.469"N	104°40'45.073"W	1.70	
11411.00	88.430	0.490	7100.99	4205.69	3399.03	2501.96	40°27'43.407"N	104°40'45.101"W	3.91	
11506.00	89.140	359.520	7103.01	4286.64	3494.01	2501.97	40°27'44.346"N	104°40'45.101"W	1.27	
11600.00	89.480	4.200	7104.14	4368.27	3587.93	2505.02	40°27'45.274"N	104°40'45.062"W	4.99	
11696.00	92.500	3.860	7102.48	4453.40	3683.66	2511.77	40°27'46.220"N	104°40'44.974"W	3.17	
11790.00	93.140	4.740	7097.86	4536.87	3777.28	2518.81	40°27'47.145"N	104°40'44.883"W	1.16	
11885.00	93.610	5.080	7092.27	4621.64	3871.77	2526.92	40°27'48.079"N	104°40'44.778"W	0.61	
11980.00	90.150	3.800	7089.15	4706.15	3966.42	2534.27	40°27'49.014"N	104°40'44.683"W	3.88	
12047.00	89.820	2.790	7089.17	4765.17	4033.31	2538.12	40°27'49.675"N	104°40'44.633"W	1.59	LAST BHI MWD SURVEY (555'FNL & 301'FEL, SEC.29)
12090.00	89.820	2.790	7089.30	4802.86	4076.26	2540.22	40°27'50.099"N	104°40'44.606"W	0.00	PROJ TO BIT (512'FNL & 299'FEL, SEC.29)

HOLE & CASING SECTIONS - Ref Wellbore: MATRIX S-29HC AWB Ref Wellpath: MATRIX S-29HC AWP

String/Diameter	Start MD [ft]	End MD [ft]	Interval [ft]	Start TVD [ft]	End TVD [ft]	Start N/S [ft]	Start E/W [ft]	End N/S [ft]	End E/W [ft]
9.625in Casing	30.00	1570.00	1540.00	30.00	1551.17	0.08	0.00	-45.53	169.56

TARGETS

Name	TVD [ft]	North [ft]	East [ft]	Grid East [US ft]	Grid North [US ft]	Latitude	Longitude	Shape
SEC.29-T06N-R65W	-1.00	-45.94	-77.31	3225842.68	1408756.67	40°27'09.367"N	104°41'18.470"W	polygon
MATRIX PAD SHARON SPRINGS SEC.29	6719.00	-45.94	-77.31	3225842.68	1408756.67	40°27'09.367"N	104°41'18.470"W	polygon
SEC.29-T06N-R65W 460' SETBACK	6924.00	-45.94	-77.31	3225842.68	1408756.67	40°27'09.367"N	104°41'18.470"W	polygon
MATRIX S-29HC BHL REV-1 ON PLAT (470'FNL & 311'FEL SEC.29)	7090.00	4118.01	2527.74	3228409.40	1412944.14	40°27'50.512"N	104°40'44.767"W	point
MATRIX S-29HC LP REV-1 ON PLAT (470'FSL & 311'FEL SEC.29)	7090.00	-292.43	2545.98	3228468.01	1408534.22	40°27'06.930"N	104°40'44.537"W	point



Actual Wellpath Report

MATRIX S-29HC AWP

Page 6 of 7



REFERENCE WELLPATH IDENTIFICATION			
Operator	EXTRACTION OIL & GAS	Slot	SLOT#08 MATRIX S-29HC (479'FSL & 2374'FWL SEC.29)
Area	COLORADO	Well	MATRIX S-29HC
Field	WELD COUNTY (NAD83/TRUE NORTH)	Wellbore	MATRIX S-29HC AWB
Facility	SEC.29-T06N-R65W		

WELLPATH COMPOSITION - Ref Wellbore: MATRIX S-29HC AWB Ref Wellpath: MATRIX S-29HC AWP				
Start MD	End MD	Positional Uncertainty Model	Log Name/Comment	Wellbore
[ft]	[ft]			
0.00	1607.00	ISCWSA MWD, Rev. 4 (Standard)	MWD SURVEY-SURFACE HOLE <100-1607>	MATRIX S-29HC AWB
1607.00	12047.00	Custom BHI NaviTrak (Standard Rotating+Axial Corr) (Rockies 0.03Gt model)	BHI NAVITRAK STD ROTATING, AXIAL, ROCKIES GT <1653-12047>	MATRIX S-29HC AWB
12047.00	12090.00	Blind Drilling (std)	Projection to bit	MATRIX S-29HC AWB



Actual Wellpath Report

MATRIX S-29HC AWP

Page 7 of 7



REFERENCE WELLPATH IDENTIFICATION			
Operator	EXTRACTION OIL & GAS	Slot	SLOT#08 MATRIX S-29HC (479'FSL & 2374'FWL SEC.29)
Area	COLORADO	Well	MATRIX S-29HC
Field	WELD COUNTY (NAD83/TRUE NORTH)	Wellbore	MATRIX S-29HC AWB
Facility	SEC.29-T06N-R65W		

WELLPATH COMMENTS				
MD [ft]	Inclination [°]	Azimuth [°]	TVD [ft]	Comment
1607.00	18.800	107.100	1586.19	TIED TO SURFACE SURVEY
7691.00	67.072	17.401	6995.94	CROSSED SETBACK BOUNDARY (460'FSL & 337'FEL, SEC.29)
8405.00	89.660	357.010	7108.09	LANDING POINT (1158'FSL & 318'FEL, SEC.29)
12047.00	89.820	2.790	7089.17	LAST BHI MWD SURVEY (555'FNL & 301'FEL, SEC.29)
12090.00	89.820	2.790	7089.30	PROJ TO BIT (512'FNL & 299'FEL, SEC.29)