

OPERATOR: **Extraction Oil & Gas**

WELL NAME: **Matrix F-29HN**

FIELD NAME: DJ Basin - Wattenberg

DRILLING RIG: H&P 321

API #: 05-123-40694

LAT/LONG: 40.452707, -104.688233

SURFACE HOLE: SESW S29-T6N-R65W, 470' FSL, 2361' FWL

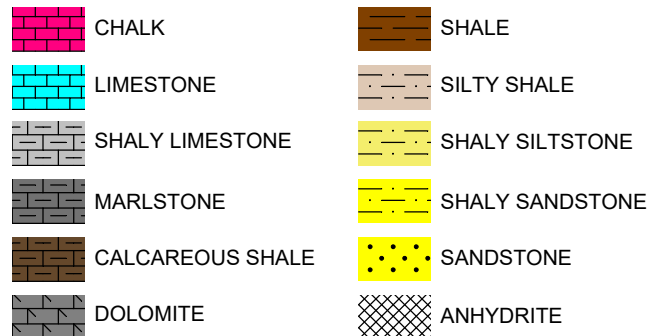
BOTTOM HOLE: S29-T6N-R65W, 465' FNL, 1460' FWL



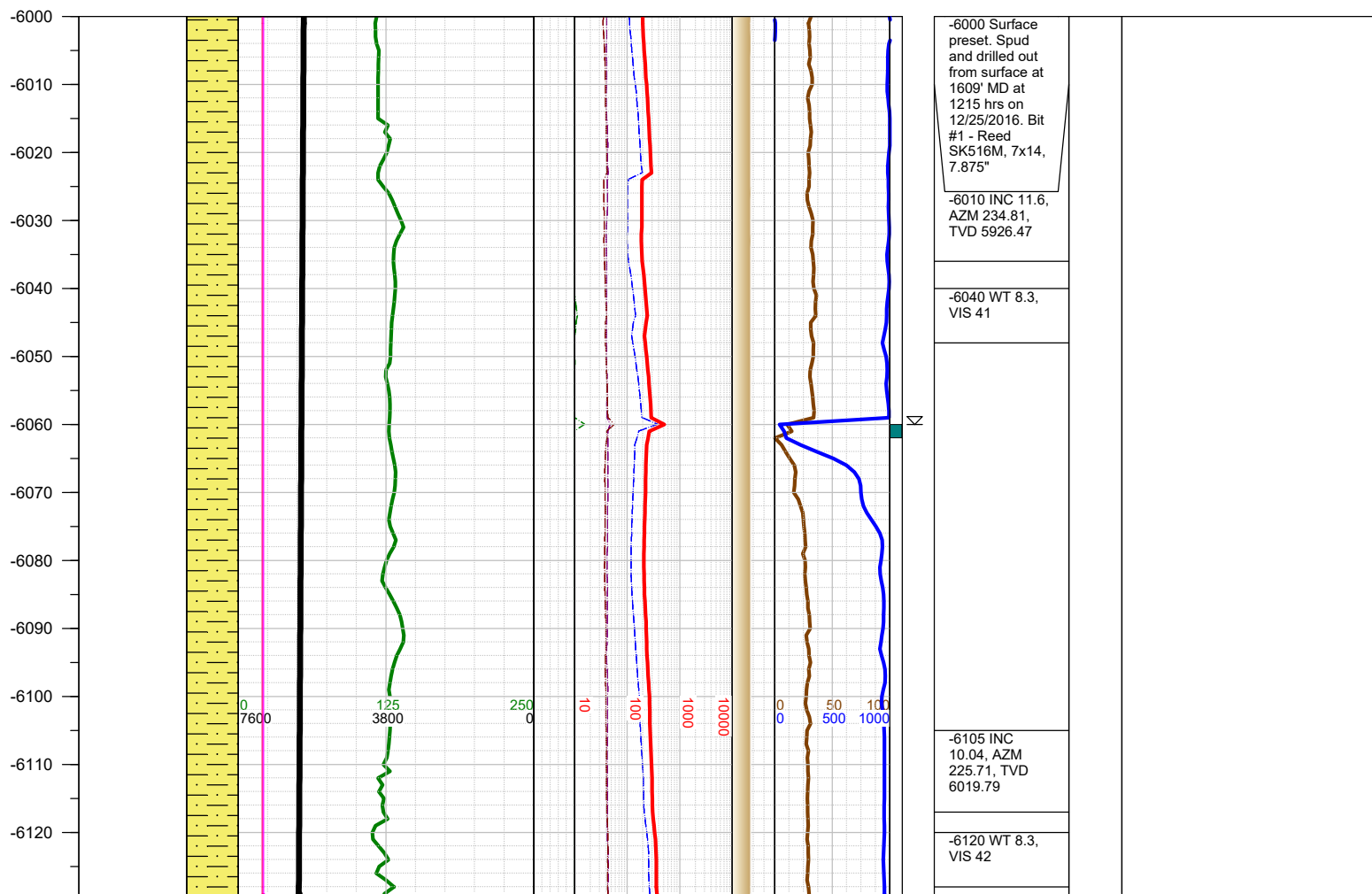
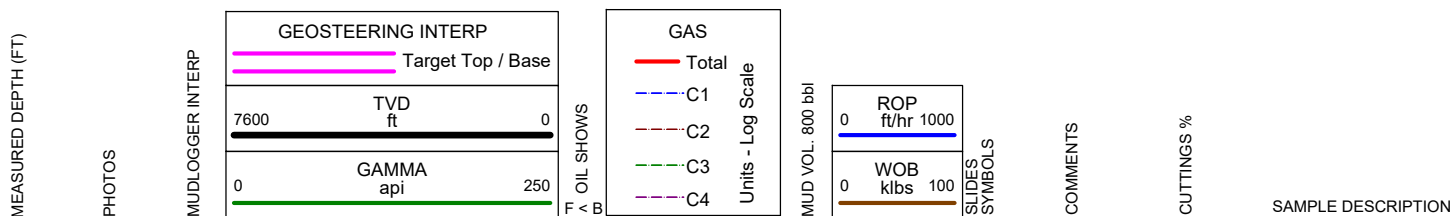
Earth Science Agency, LLC

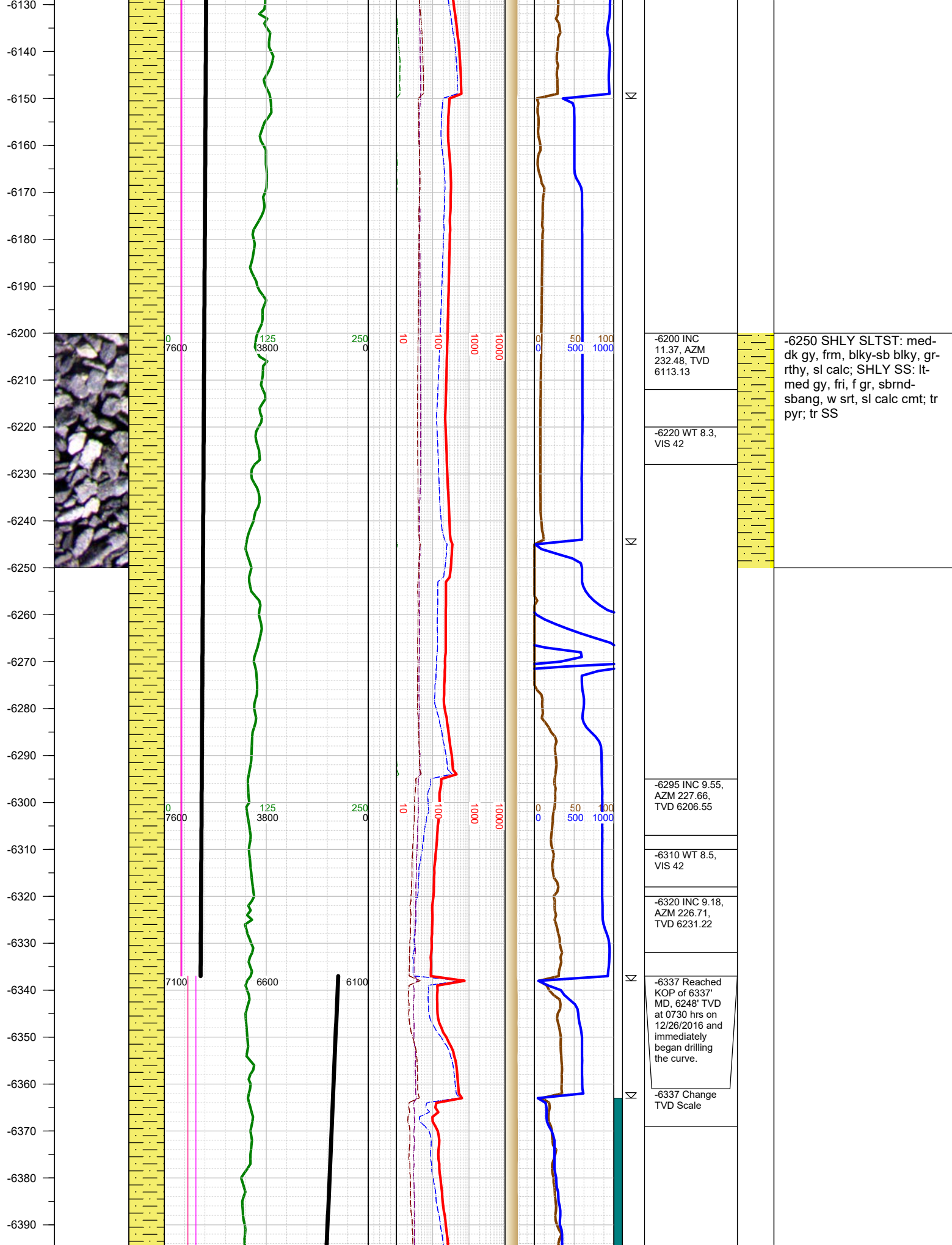
COUNTY: Weld  
STATE: Colorado  
GROUND ELEVATION: 4707'  
KELLY BUSHING: 4737'  
DRILLING FLUID: OBM  
TVD VS. MD: 6985' / 11681'  
SPUD DATE: December 25, 2016  
TD DATE: December 27, 2016  
  
DEPTHS LOGGED: 6000' - 11681'  
DATES LOGGED: December 25, 2016 - December 27, 2016  
GEOLOGISTS: Brian Whitfield, Ryan Gall  
SCALE: 5" = 100'

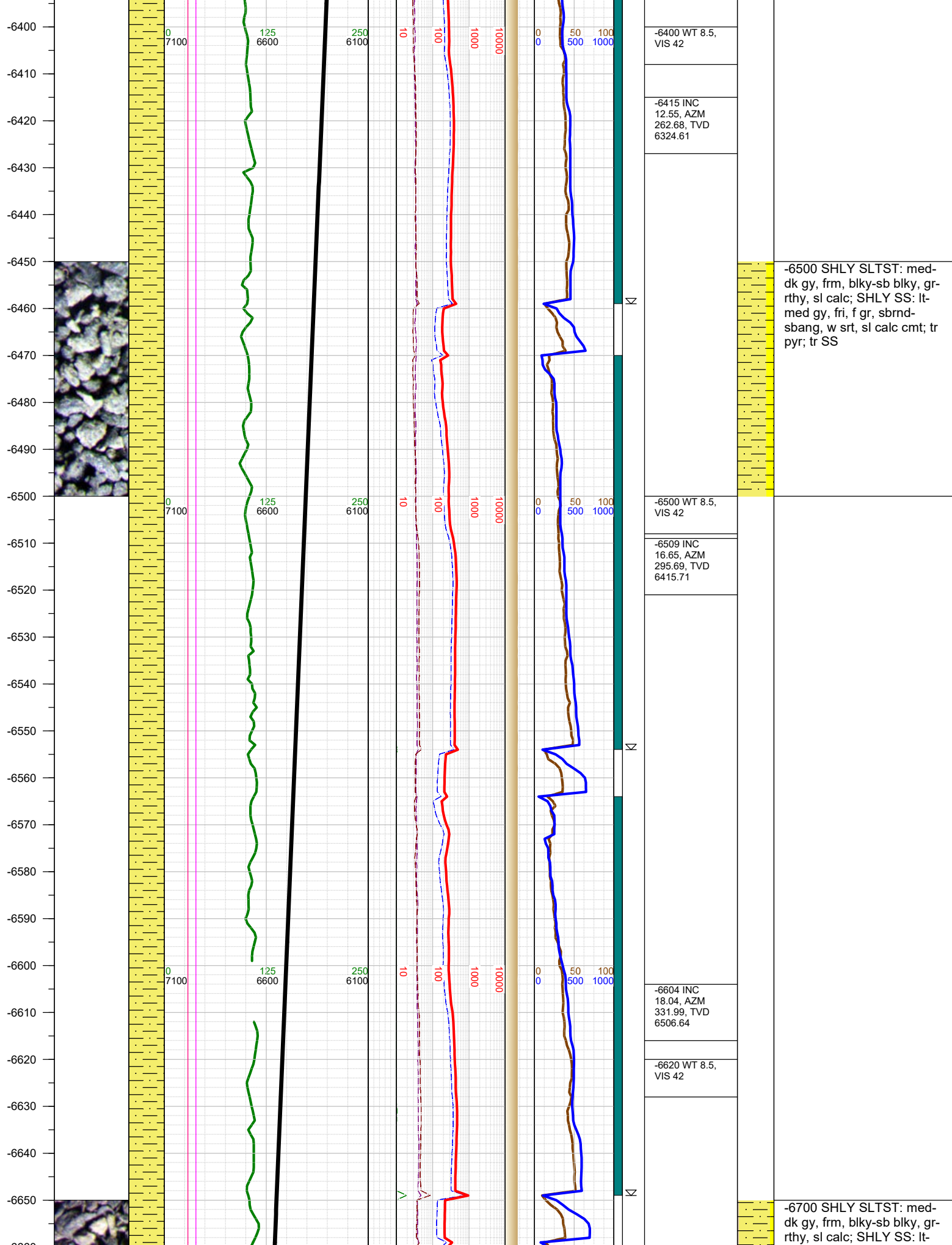
#### LEGEND



FORMATION  $\approx$  CONNECTION  $\Delta$  MIDNIGHT NEW BIT GAS SHOW FAULT

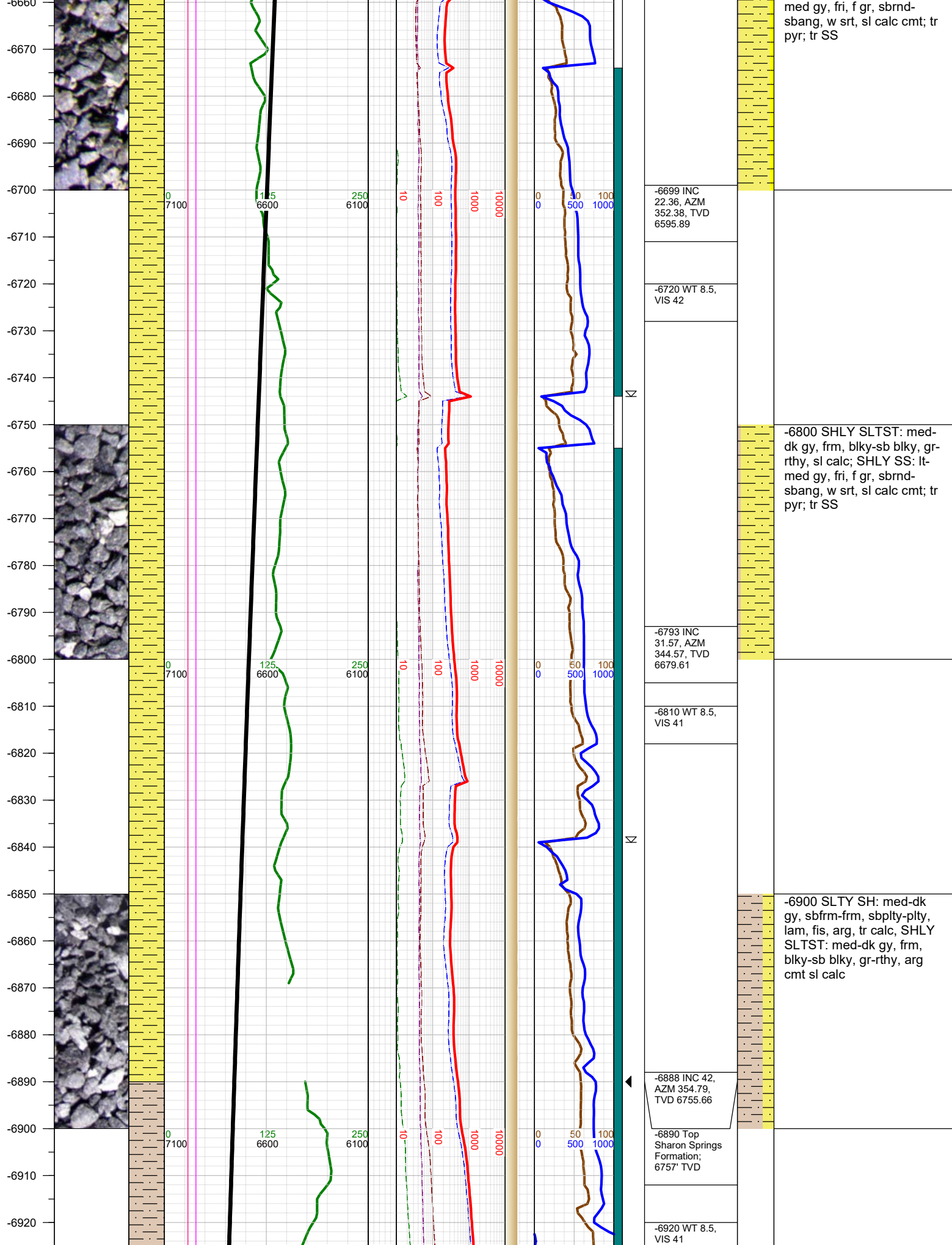


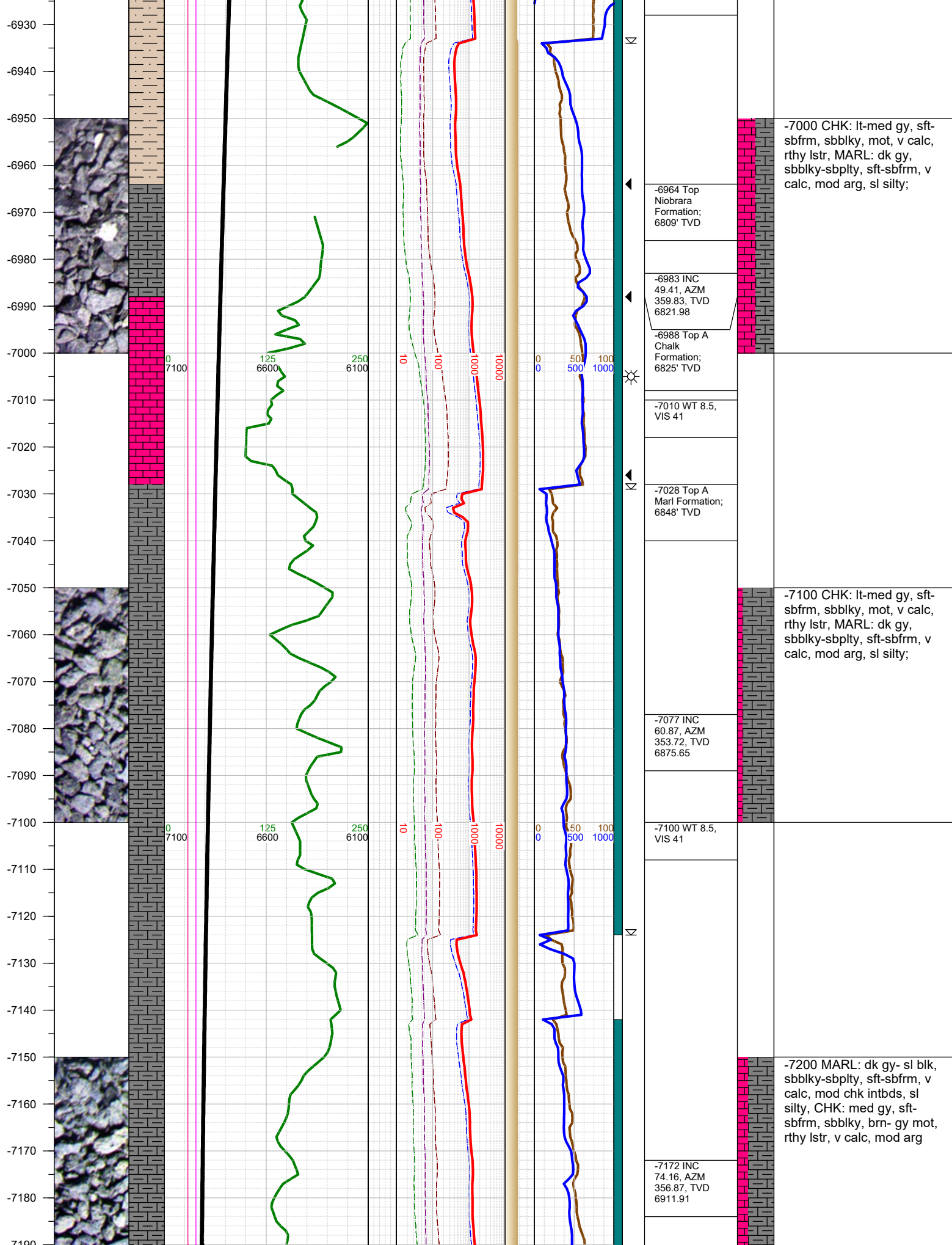


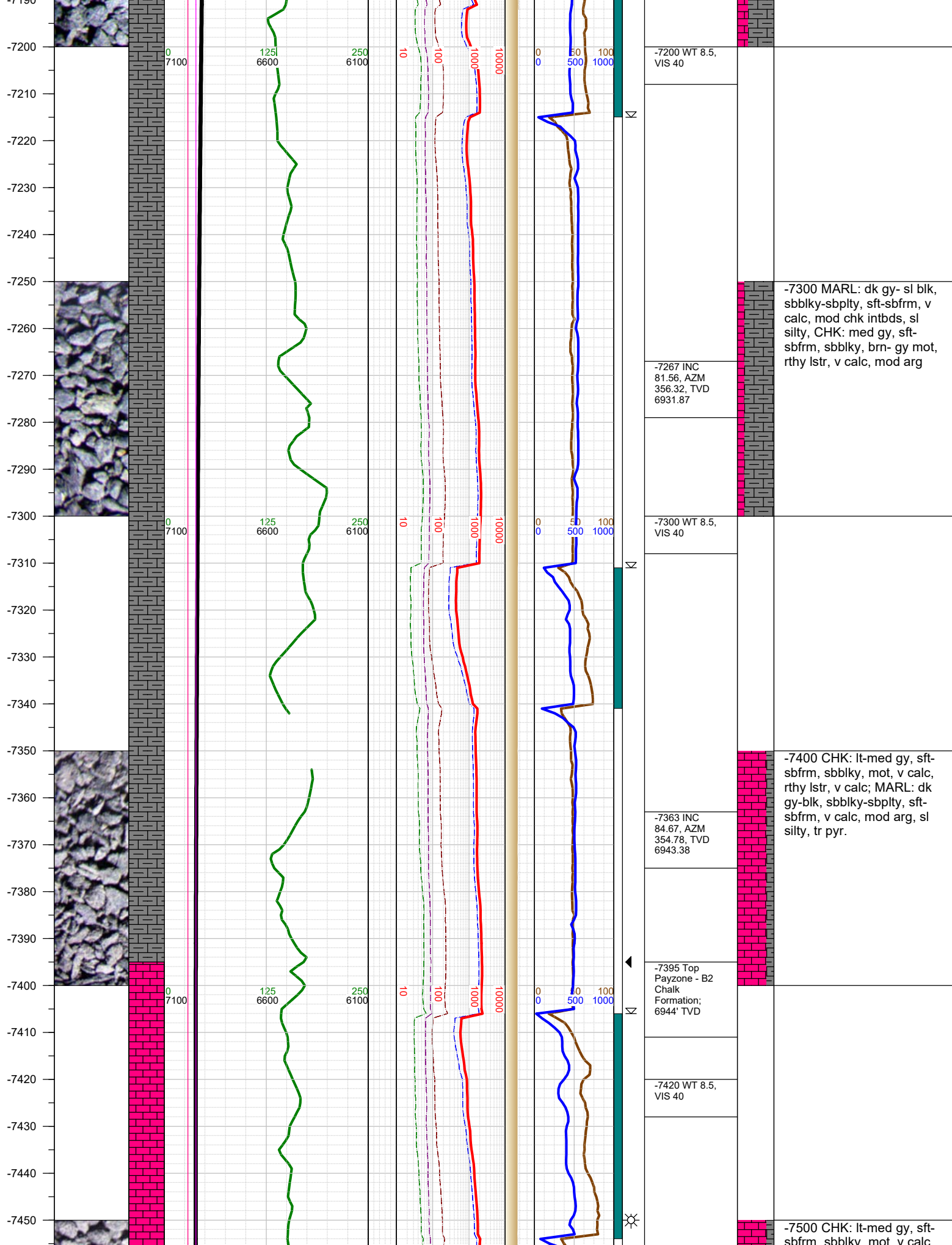


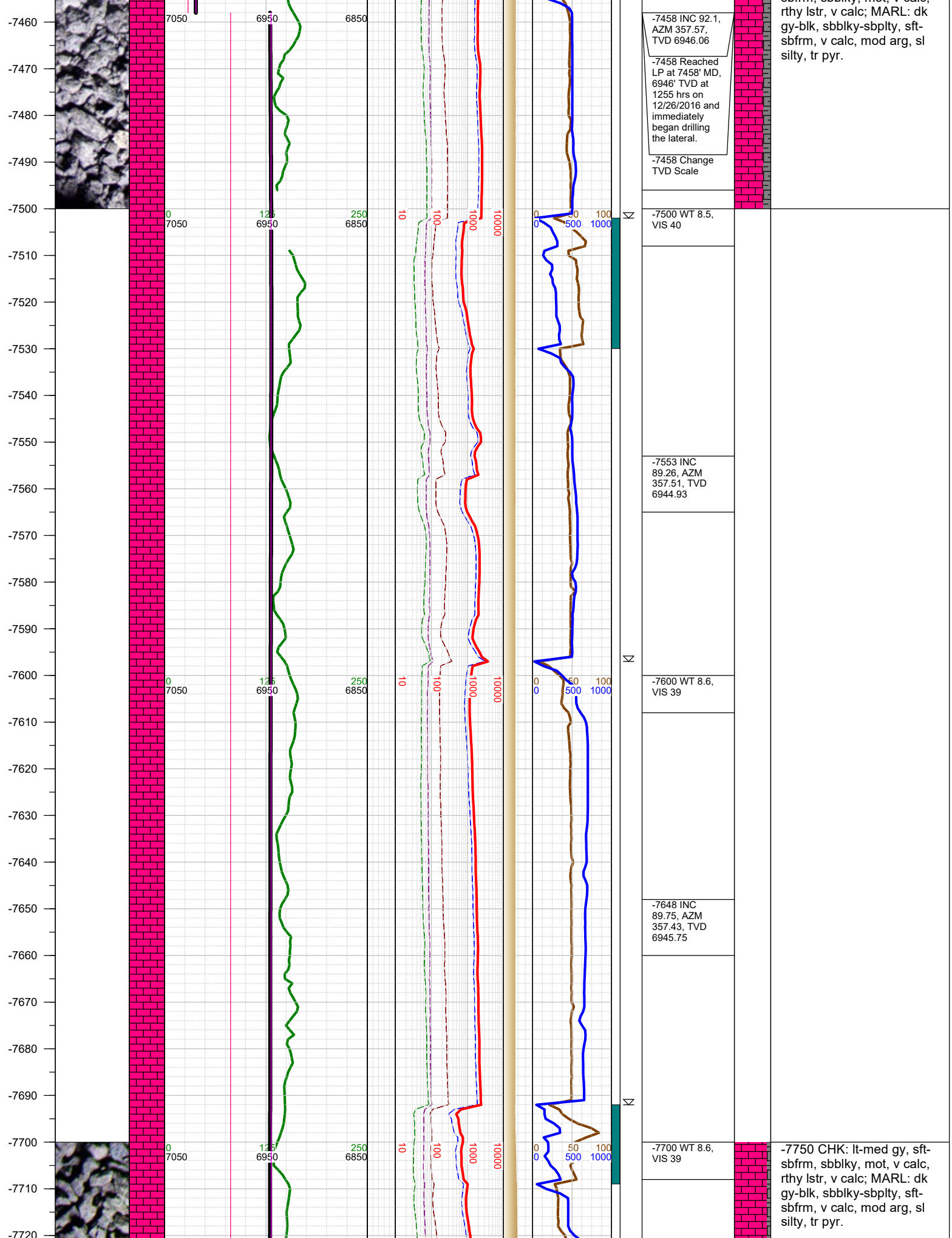
-6500 SHLY SLTST: med-dk gy, frm, blk-sb blk, gr-rthy, sl calc; SHLY SS: lt-med gy, fri, f gr, sbrnd-sbang, w srt, sl calc cmt; tr pyr; tr SS

-6700 SHLY SLTST: med-dk gy, frm, blk-sb blk, gr-rthy, sl calc; SHLY SS: lt-

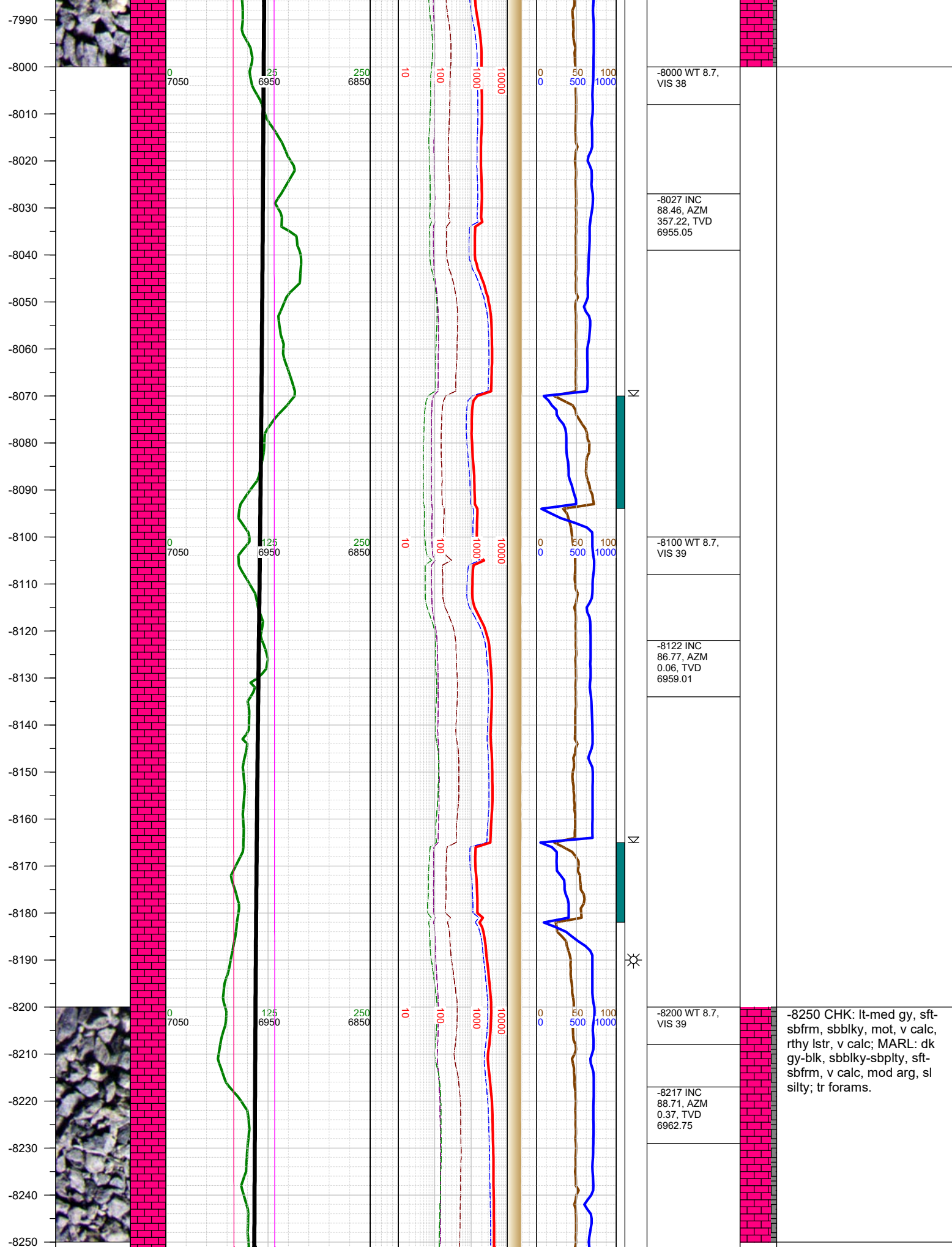


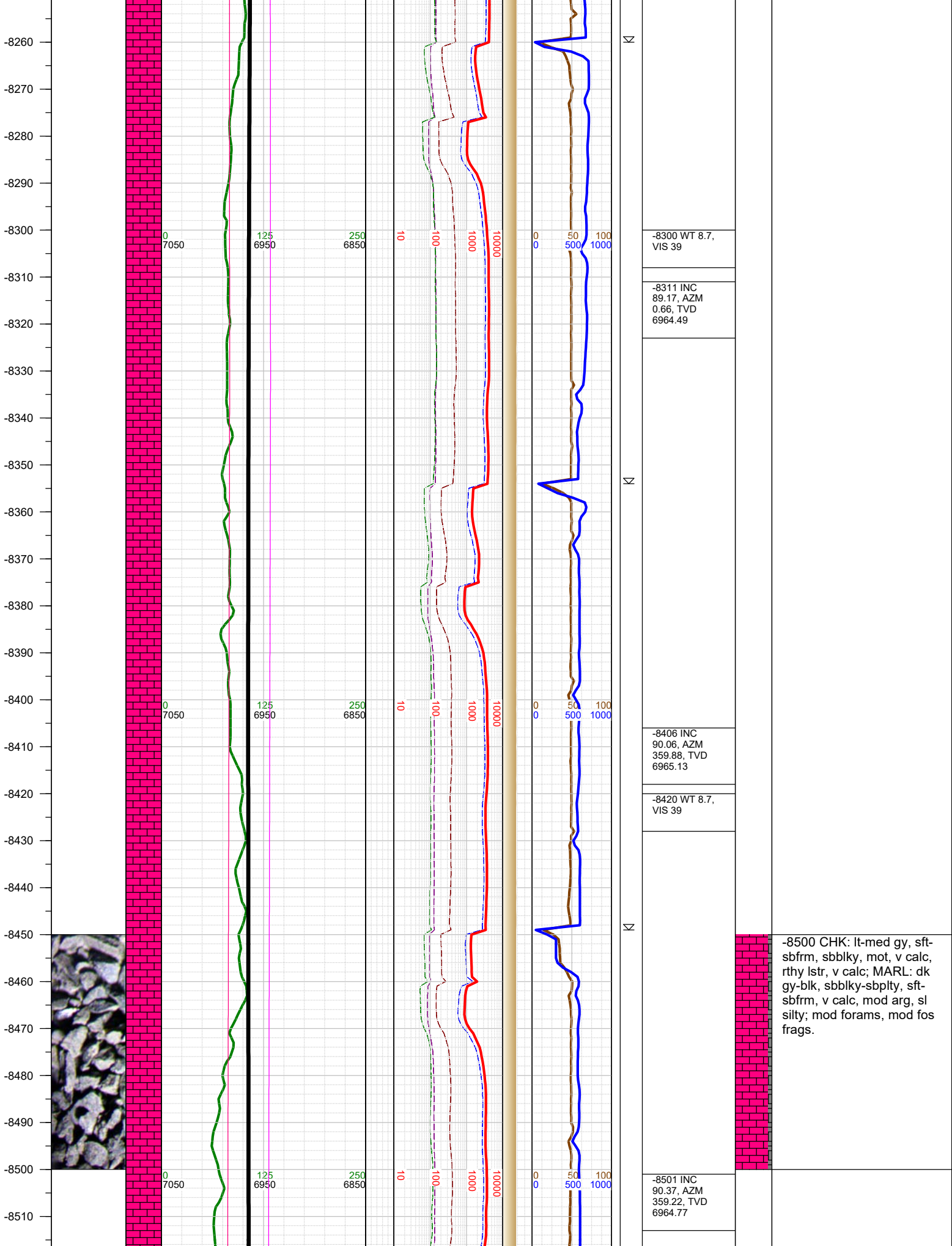




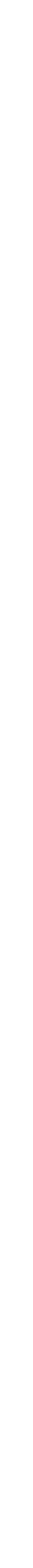
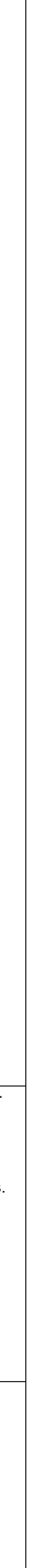
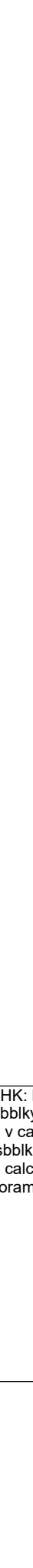
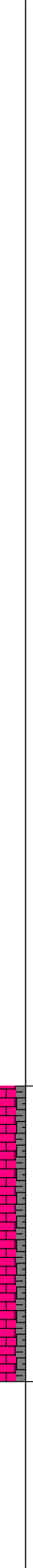
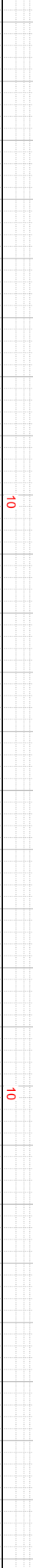
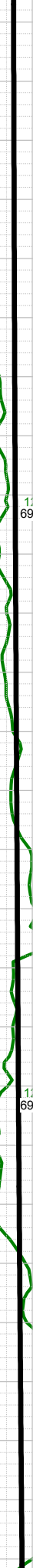
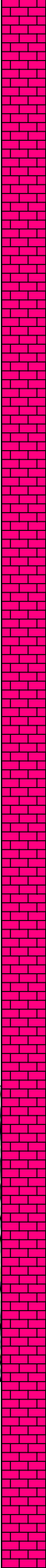
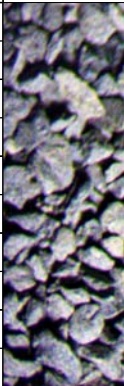








-8520  
-8530  
-8540  
-8550  
-8560  
-8570  
-8580  
-8590  
-8600  
-8610  
-8620  
-8630  
-8640  
-8650  
-8660  
-8670  
-8680  
-8690  
-8700  
-8710  
-8720  
-8730  
-8740  
-8750  
-8760  
-8770  
-8780



-8520 WT 8.7,  
VIS 39

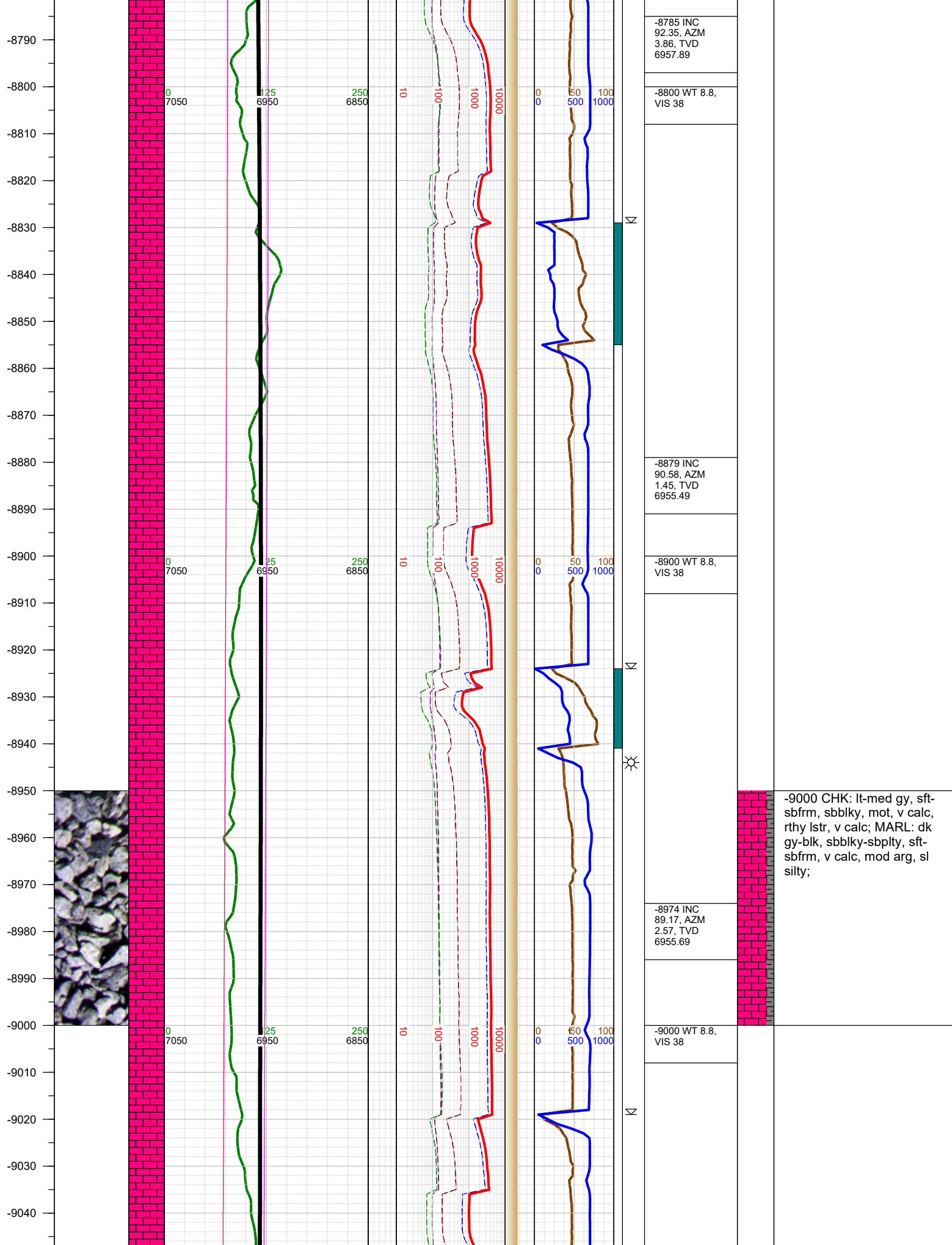
-8595 INC  
91.17, AZM  
359.61, TVD  
6963.51

-8610 WT 8.7,  
VIS 39

-8690 INC  
91.63, AZM  
359.3, TVD  
6961.19

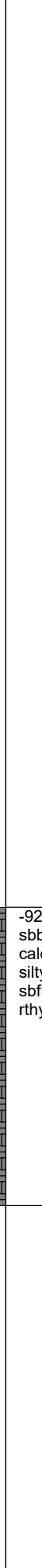
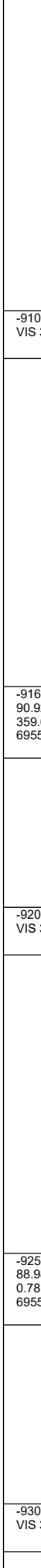
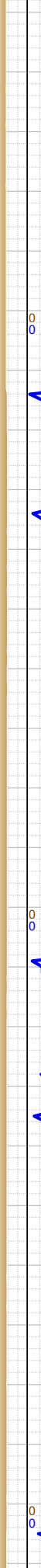
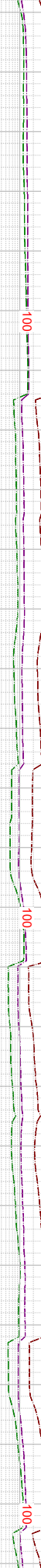
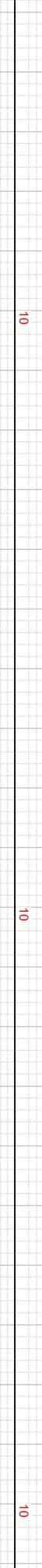
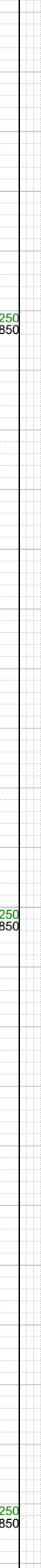
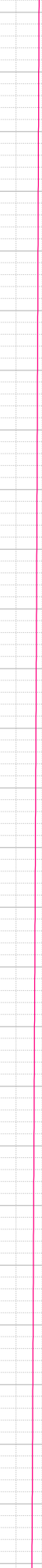
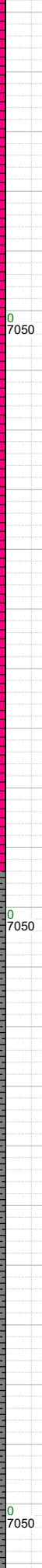
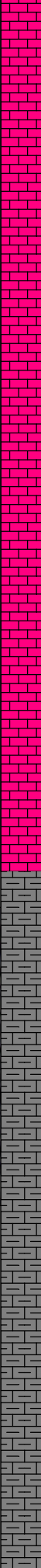
-8710 WT 8.7,  
VIS 39

-8750 CHK: lt-med gy, sft-  
sbfrm, sbbkly, mot, v calc,  
rthy lstr, v calc; MARL: dk  
gy-blk, sbbkly-sbply, sft-  
sbfrm, v calc, mod arg, sl  
silty; tr forams, tr fos frags.



-9000 CHK: lt-med gy, sft-sbfrm, sbblky, mot, v calc, rthy lstr, v calc; MARL: dk gy-blk, sbblky-sbpty, sft-sbfrm, v calc, mod arg, sl silty;

-9050  
-9060  
-9070  
-9080  
-9090  
-9100  
-9110  
-9120  
-9130  
-9140  
-9150  
-9160  
-9170  
-9180  
-9190  
-9200  
-9210  
-9220  
-9230  
-9240  
-9250  
-9260  
-9270  
-9280  
-9290  
-9300  
-9310



-9100 WT 8.8,  
VIS 38

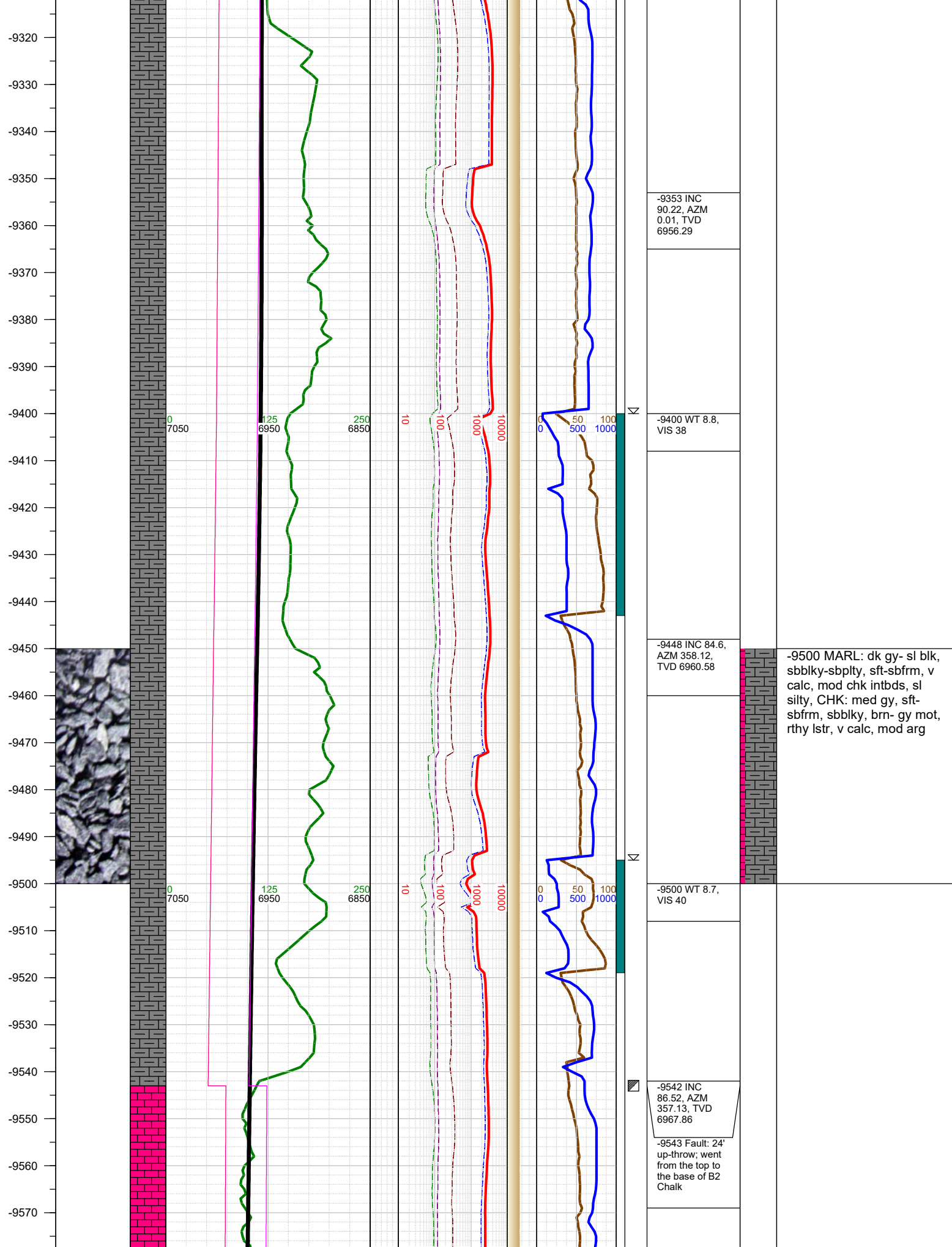
-9163 INC  
90.92, AZM  
359.64, TVD  
6955.54

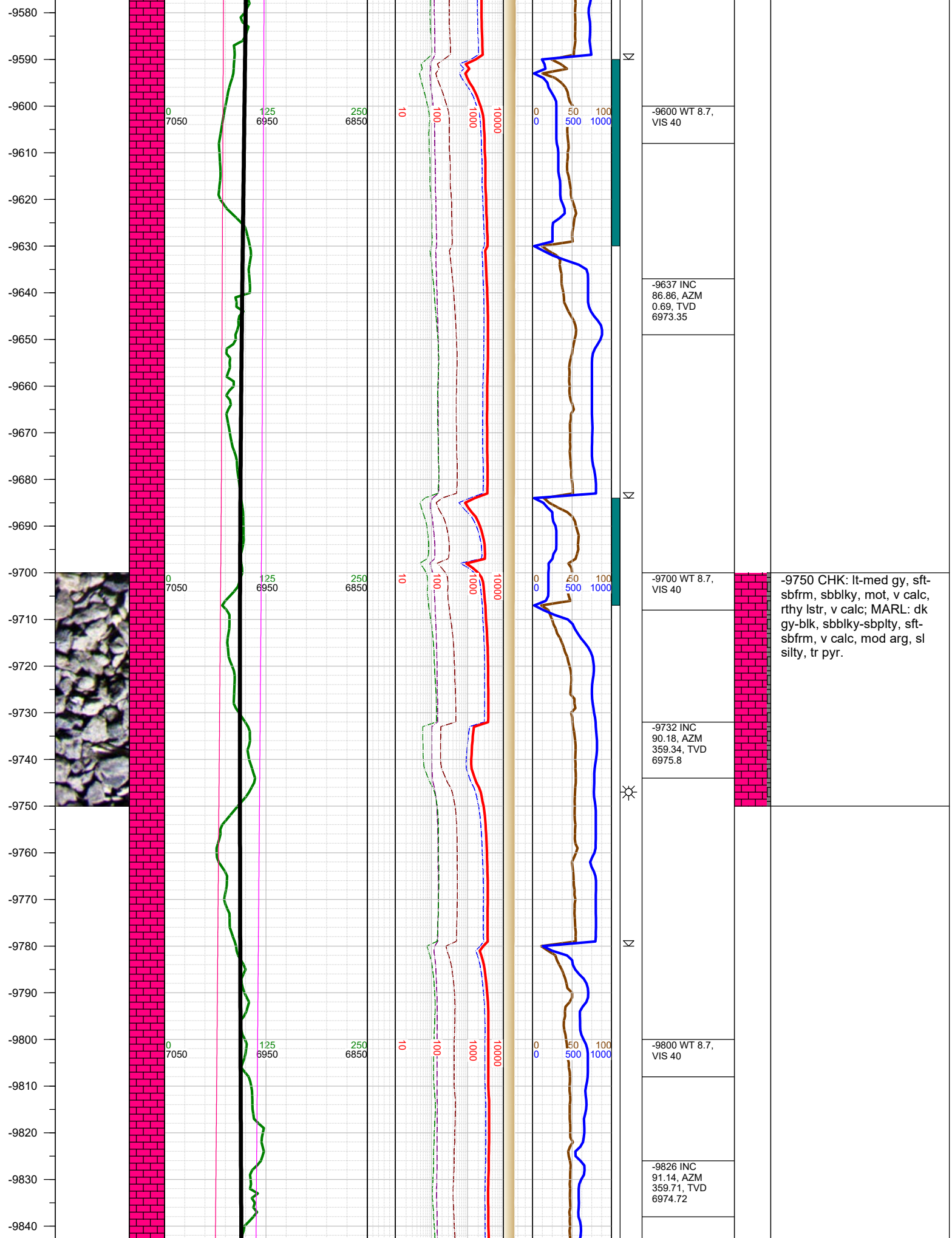
-9200 WT 8.8,  
VIS 38

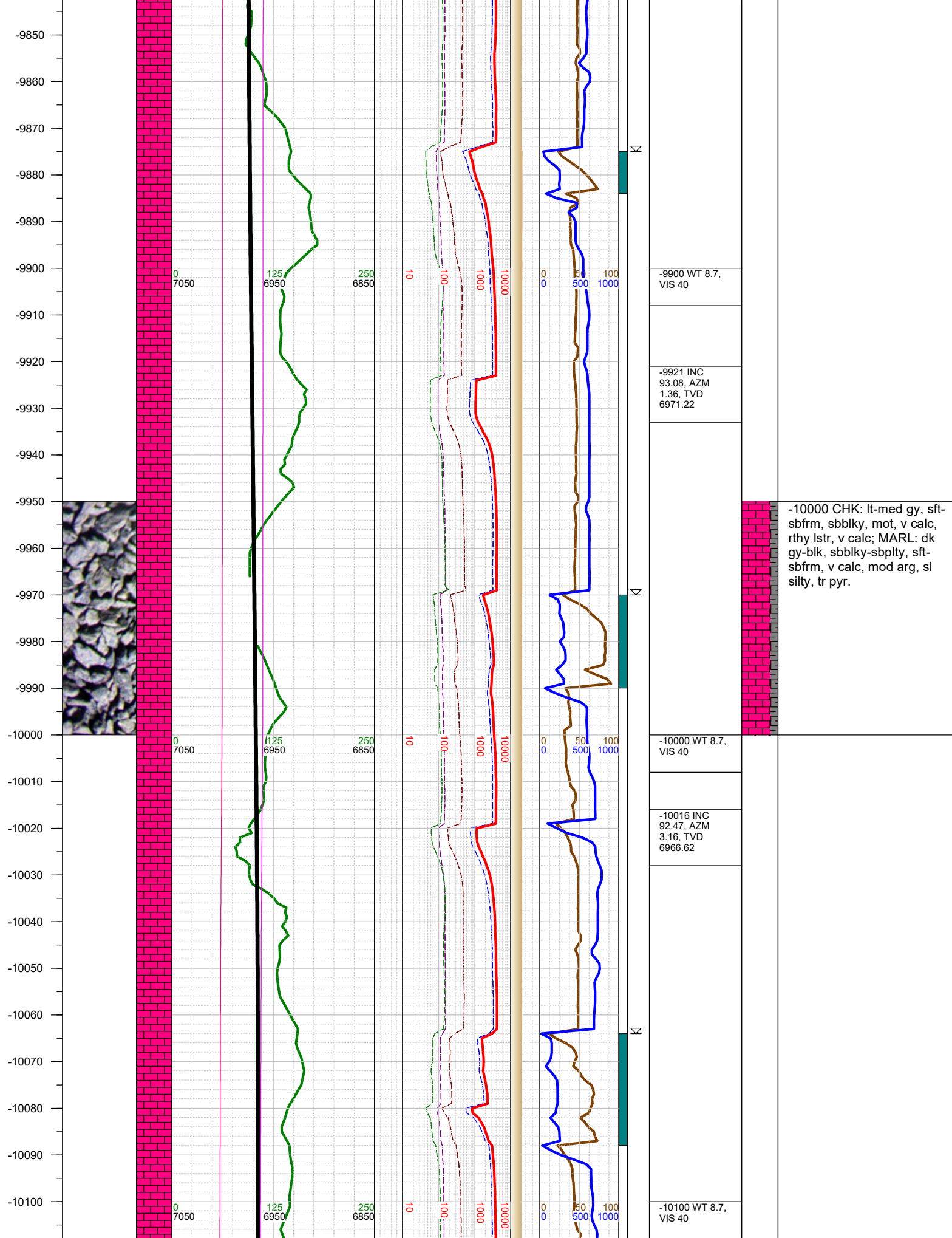
-9250 MARL: dk gy- sl blk,  
sbbiky-sbplty, sft-sbfrm, v  
calc, mod chk intbds, sl  
silty, CHK: med gy, sft-  
sbfrm, sbbiky, brn- gy mot,  
rthy lstr, v calc, mod arg

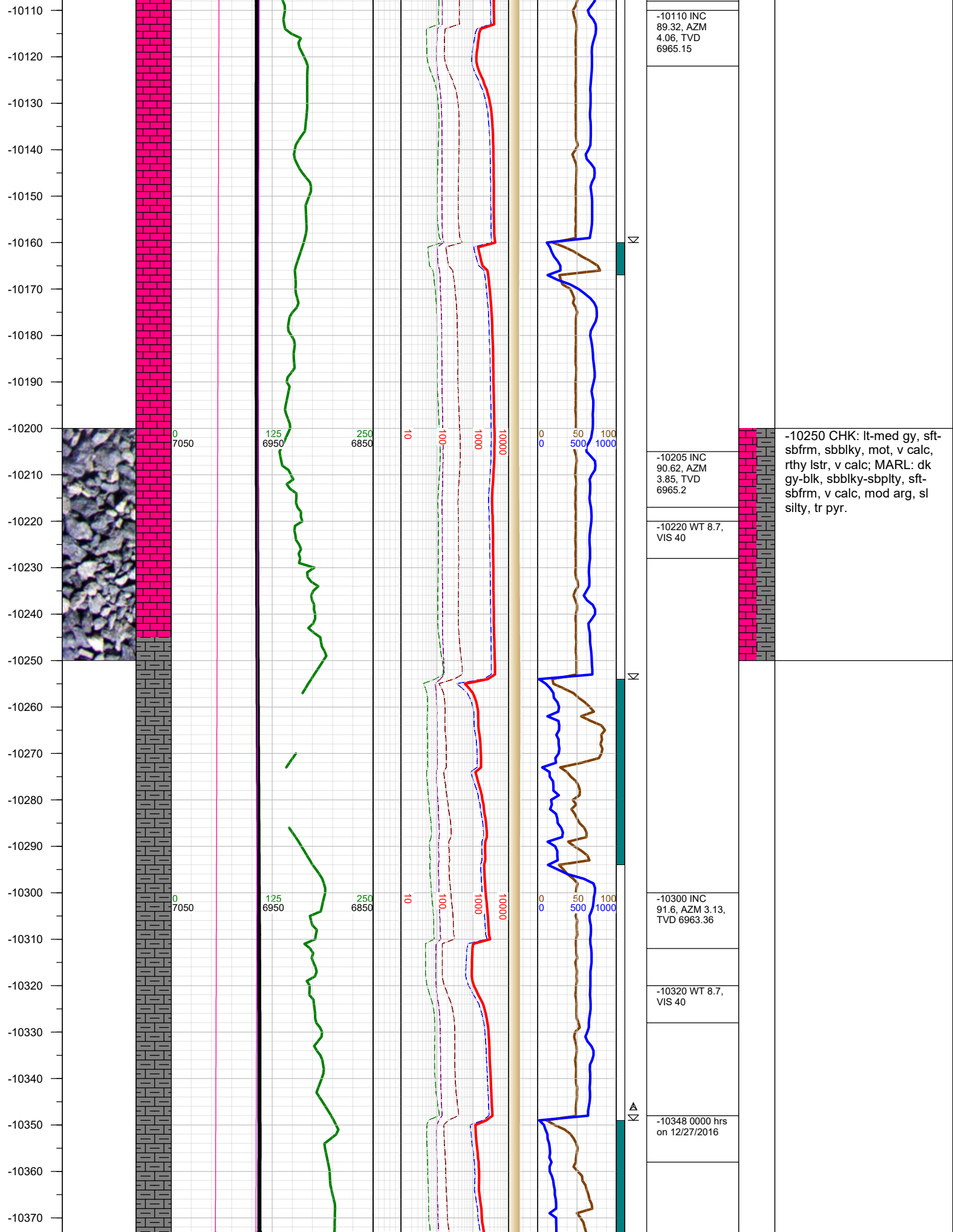
-9258 INC  
88.98, AZM  
0.78, TVD  
6955.63

-9300 WT 8.8,  
VIS 38

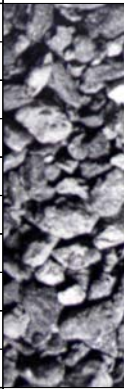








-10380  
-10390  
-10400  
-10410  
-10420  
-10430  
-10440  
-10450  
-10460  
-10470  
-10480  
-10490  
-10500  
-10510  
-10520  
-10530  
-10540  
-10550  
-10560  
-10570  
-10580  
-10590  
-10600  
-10610  
-10620  
-10630



0  
7050

125  
6950

250  
6850

10

100

1000

10000

0  
0

50  
500

100  
1000

-10394 INC  
88.77, AZM  
0.81, TVD  
6963.06

-10410 WT 8.7,  
VIS 40

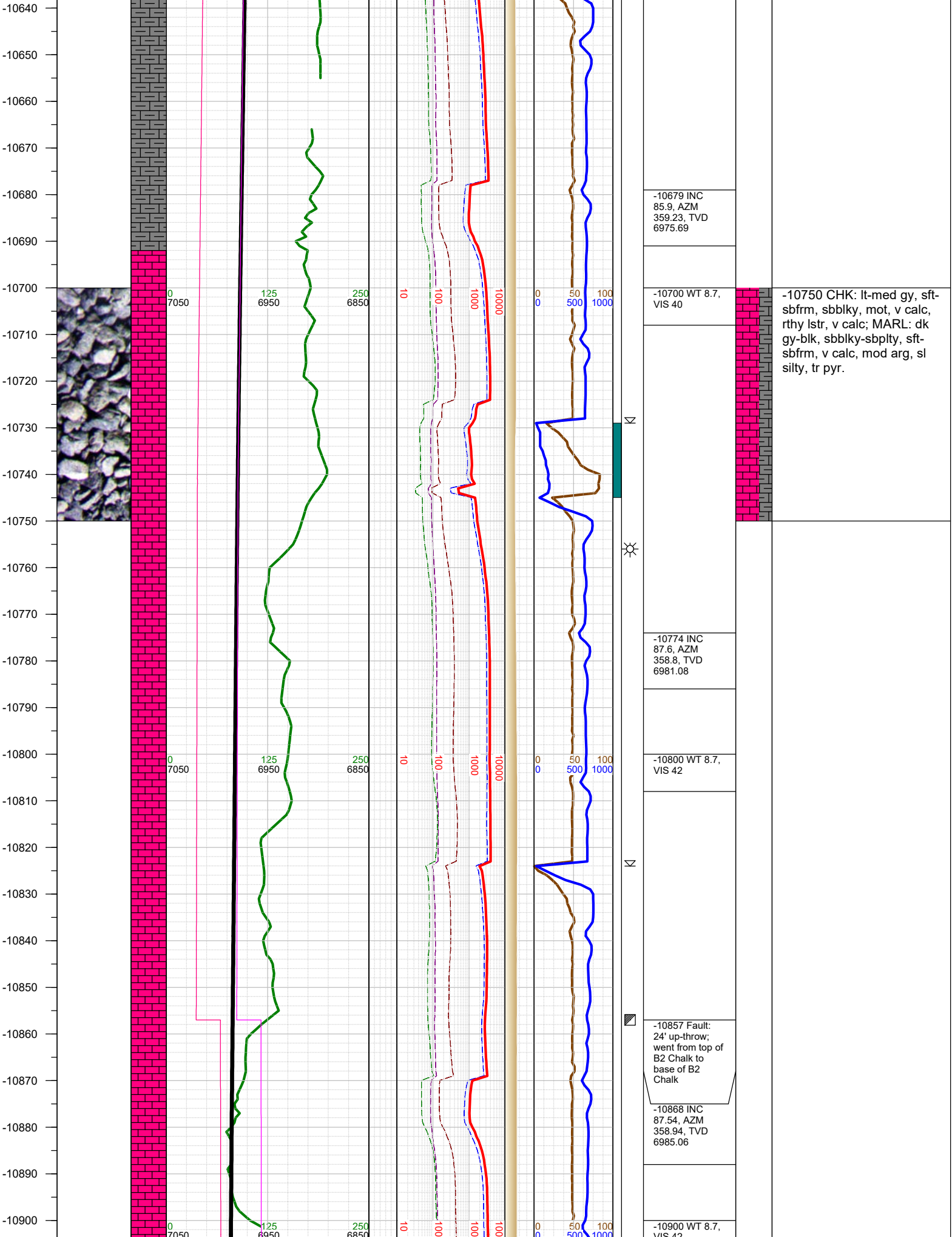
-10489 INC  
88.71, AZM  
359.24, TVD  
6965.15

-10510 WT 8.7,  
VIS 40

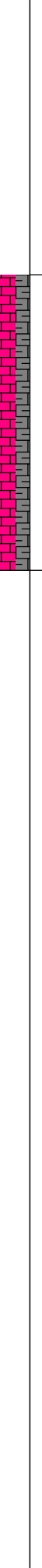
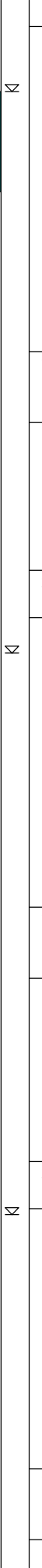
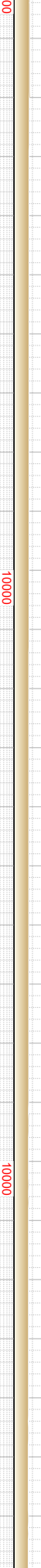
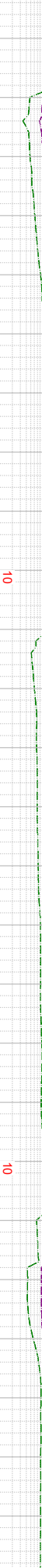
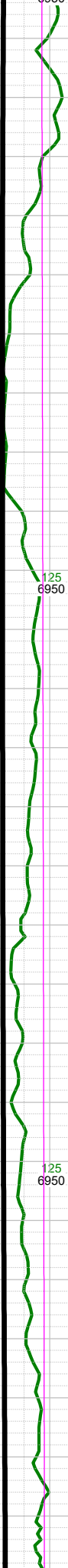
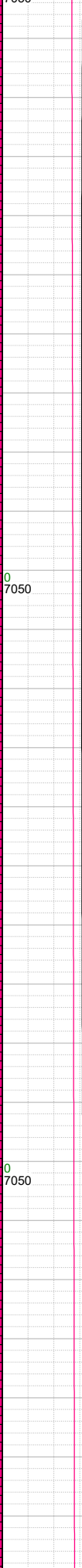
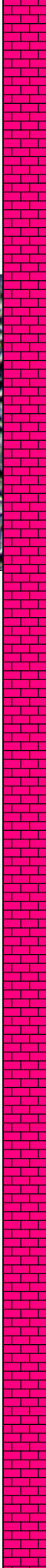
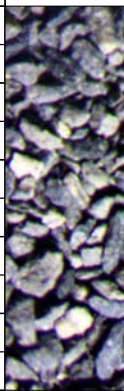
-10584 INC  
86.33, AZM  
359.33, TVD  
6969.26

-10600 WT 8.7,  
VIS 40

-10500 MARL: dk gy- sl  
blk, sbblky-sbply, sft-  
sbfrm, v calc, mod chk  
intbds, sl silty; CHK: med  
gy, sft-sbfrm, sbblky, brn-  
gy mot, rthy lstr, v calc,  
mod arg; tr pyr



-10910  
-10920  
-10930  
-10940  
-10950  
-10960  
-10970  
-10980  
-10990  
-11000  
-11010  
-11020  
-11030  
-11040  
-11050  
-11060  
-11070  
-11080  
-11090  
-11100  
-11110  
-11120  
-11130  
-11140  
-11150  
-11160



Δ

Δ

Δ

VIS 42

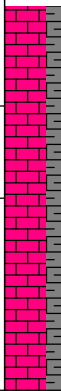
-10963 INC  
89.97, AZM  
358.29, TVD  
6987.13

-11000 WT 8.7,  
VIS 42

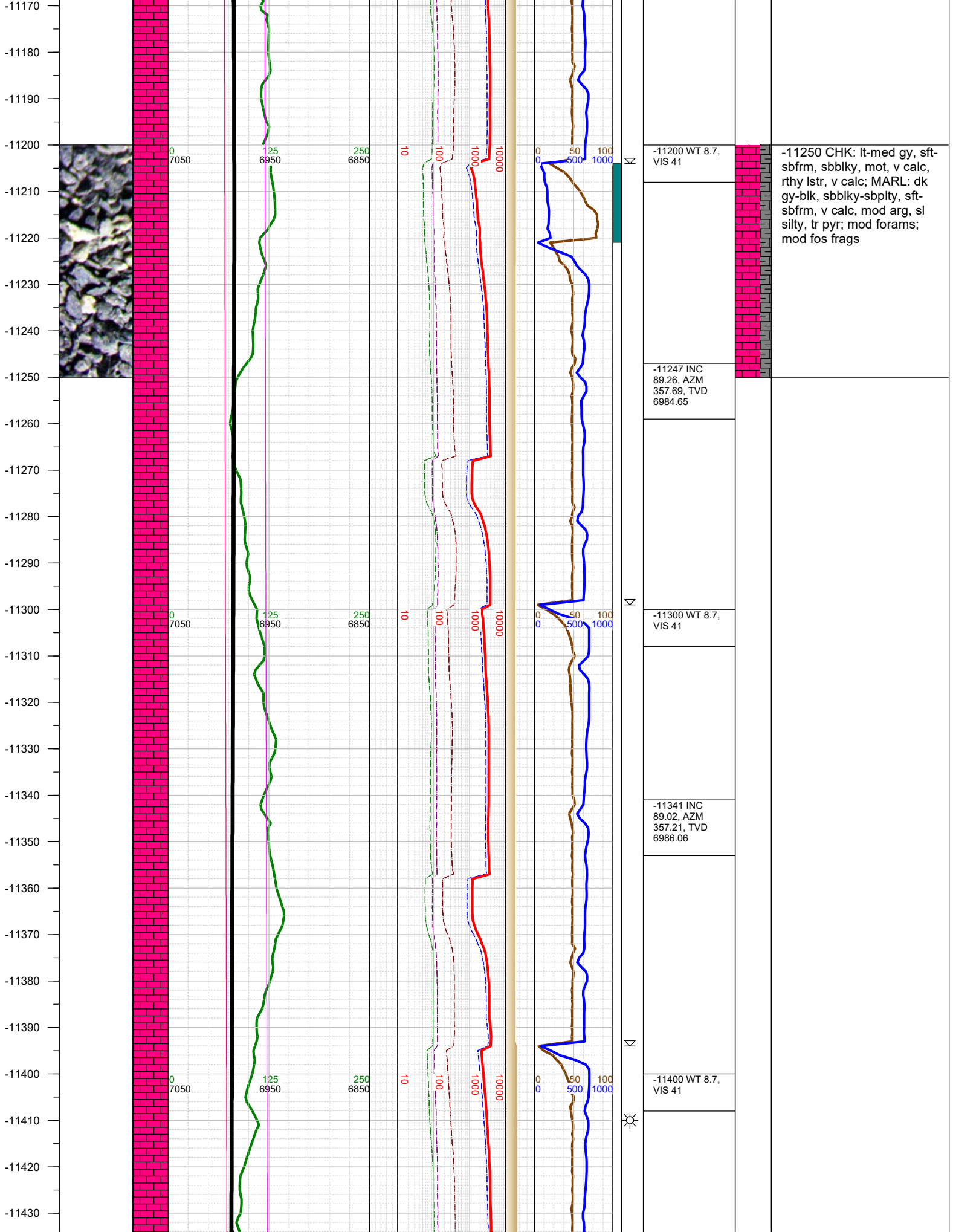
-11057 INC  
90.46, AZM  
358.27, TVD  
6986.78

-11100 WT 8.7,  
VIS 42

-11152 INC  
91.42, AZM  
358.14, TVD  
6985.22

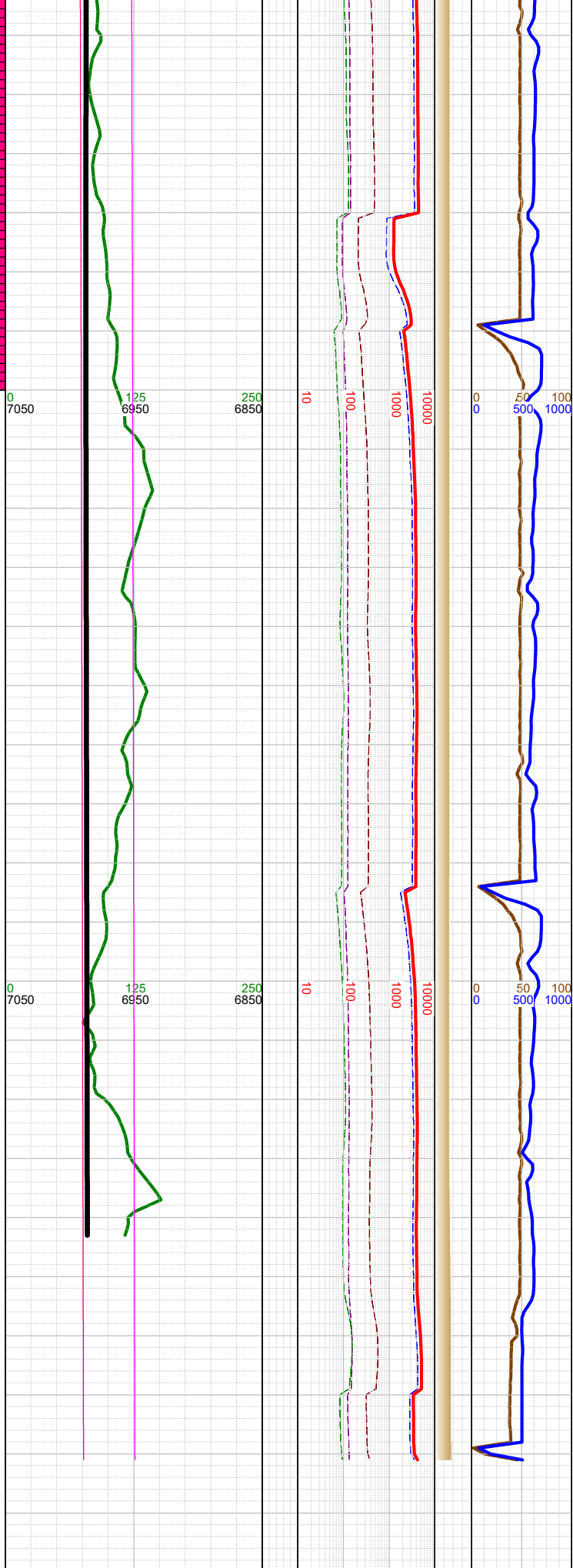
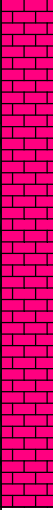


-11000 CHK: lt-med gy, sft-  
sbfrm, sbbly, mot, v calc,  
rthy lstr, v calc; MARL: dk  
gy-blk, sbbly-sbply, sft-  
sbfrm, v calc, mod arg, sl  
silty, tr pyr; mod forams;  
mod fos frags



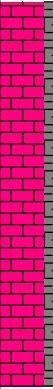
-11250 CHK: lt-med gy, sft-sbfrm, sbbiky, mot, v calc, rthy lstr, v calc; MARL: dk gy-blk, sbbiky-sbplty, sft-sbfrm, v calc, mod arg, sl silty, tr pyr; mod forams; mod fos frags

-11440  
-11450  
-11460  
-11470  
-11480  
-11490  
-11500  
-11510  
-11520  
-11530  
-11540  
-11550  
-11560  
-11570  
-11580  
-11590  
-11600  
-11610  
-11620  
-11630  
-11640  
-11650  
-11660  
-11670  
-11680  
-11690

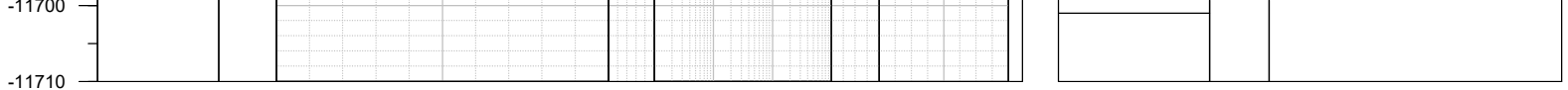


Σ  
Σ  
Σ

-11436 INC 89.57, AZM 356.87, TVD 6987.23
-11500 WT 8.7, VIS 41
-11531 INC 90.46, AZM 356.61, TVD 6987.21
-11600 WT 8.7, VIS 41
-11638 INC 90.92, AZM 356.26, TVD 6985.92
-11681 Reached horizontal TD of 11681' MD, 6985' TVD at 0515 hrs on 12/27/2016.



-11500 CHK: lt-med gy, sft-sbfrm, sbbly, mot, v calc, rthy lstr, v calc; MARL: dk gy-blk, sbbly-sbply, sft-sbfrm, v calc, mod arg, sl silty, tr pyr; mod forams; abdt fos frags



TOTAL DEPTH = 11681'

Thank you for using Earth Science Agency