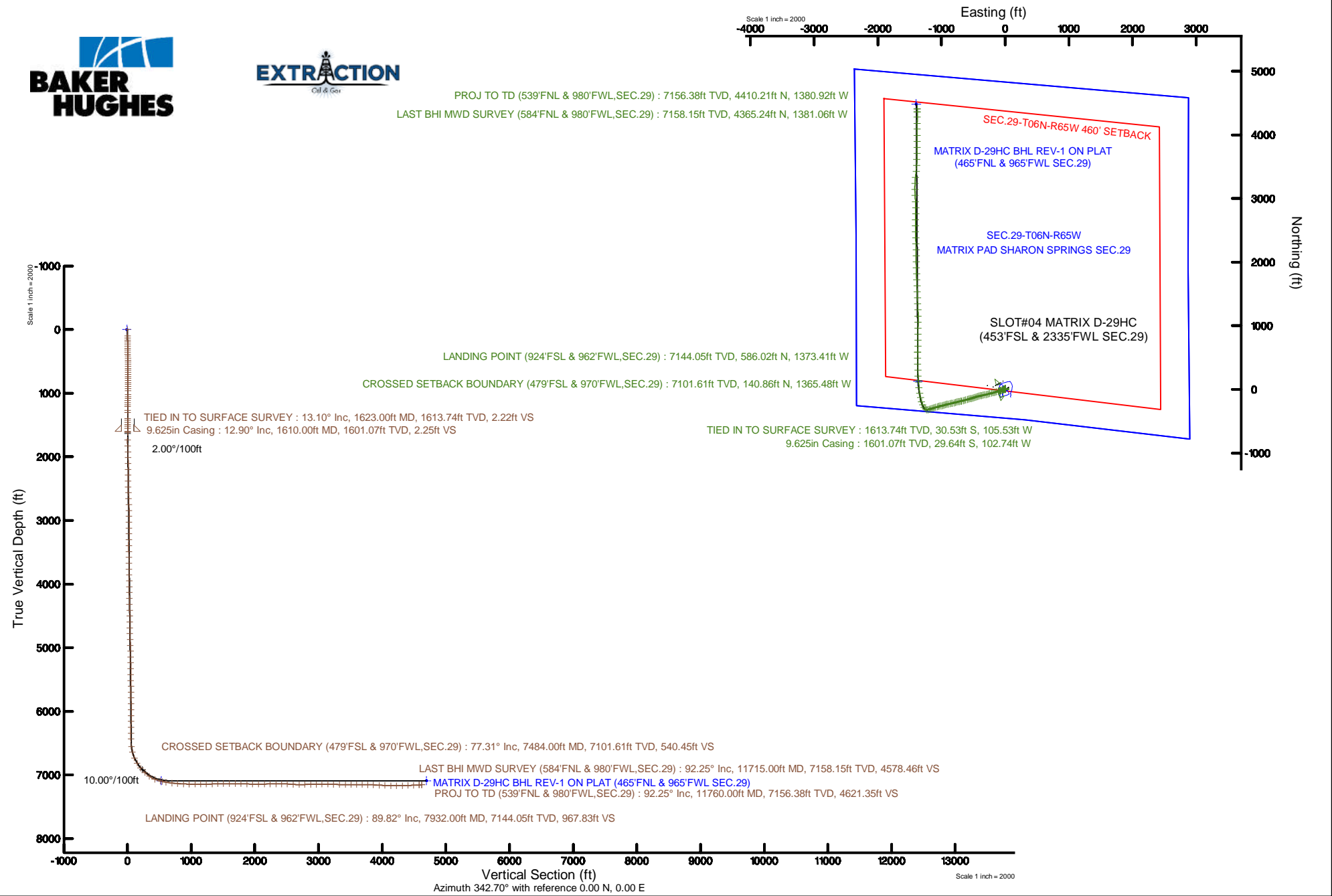


# EXTRACTION OIL & GAS

Location: COLORADO Slot: SLOT#04 MATRIX D-29HC (453'FSL & 2335'FWL SEC.29)  
Field: WELD COUNTY (NAD83/TRUE NORTH) Well: MATRIX D-29HC  
Facility: SEC.29-T06N-R65W Wellbore: MATRIX D-29HC PWB

Plot reference wellpath is MATRIX D-29HC REV-A.0 PWP	Grid System: NAD83 / Lambert Colorado SP, Northern Zone (501), US feet
True vertical depths are referenced to H&P 321 (RKB)	* = Wellpath was transformed from a different geodetic datum
Measured depths are referenced to H&P 321 (RKB)	North Reference: True north
H&P 321 (RKB) to Mean Sea Level: 4737 feet	Scale: True distance
Mean Sea Level to Mud line (At Slot: SLOTH04 MATRIX D-29HC (453'FSL & 2335'FWL SEC.29)): 0 feet	Depths are in feet
Coordinates are in feet referenced to Slot	Created by: hutaedr on 2017-02-21
	Database: WA_DEN_Denver_Defn



## REFERENCE WELLPATH IDENTIFICATION

Operator	EXTRACTION OIL & GAS	Slot	SLOT#04 MATRIX D-29HC (453'FSL & 2335'FWL SEC.29)
Area	COLORADO	Well	MATRIX D-29HC
Field	WELD COUNTY (NAD83/TRUE NORTH)	Wellbore	MATRIX D-29HC AWP
Facility	SEC.29-T06N-R65W		

## REPORT SETUP INFORMATION

Projection System	NAD83 / Lambert Colorado SP, Northern Zone (501), US feet	Software System	WellArchitect® 5.0
North Reference	True	User	Hutaedr
Scale	0.999963	Report Generated	21/Feb/2017 at 14:16
Convergence at slot	0.53° East	Database/Source file	WA_DEN_Denver_Defn/MATRIX_D-29HC_AWP.xml

## WELLPATH LOCATION

	Local coordinates		Grid coordinates		Geographic coordinates	
	North[ft]	East[ft]	Easting[US ft]	Northing[US ft]	Latitude	Longitude
Slot Location	22.97	38.34	3225880.82	1408779.99	40°27'09.594"N	104°41'17.974"W
Facility Reference Pt			3225842.68	1408756.67	40°27'09.367"N	104°41'18.470"W
Field Reference Pt			3185481.27	1419166.81	40°28'55.560"N	104°49'59.556"W

## WELLPATH DATUM

Calculation method	Minimum curvature	H&P 321 (RKB) to Facility Vertical Datum	4737.00ft
Horizontal Reference Pt	Slot	H&P 321 (RKB) to Mean Sea Level	4737.00ft
Vertical Reference Pt	H&P 321 (RKB)	H&P 321 (RKB) to Mud Line at Slot (SLOT#04 MATRIX D-29HC (453'FSL & 2335'FWL SEC.29))	4737.00ft
MD Reference Pt	H&P 321 (RKB)	Section Origin	N 0.00, E 0.00 ft
Field Vertical Reference	Mean Sea Level	Section Azimuth	342.70°

## REFERENCE WELLPATH IDENTIFICATION

Operator	EXTRACTION OIL & GAS	Slot	SLOT#04 MATRIX D-29HC (453'FSL & 2335'FWL SEC.29)
Area	COLORADO	Well	MATRIX D-29HC
Field	WELD COUNTY (NAD83/TRUE NORTH)	Wellbore	MATRIX D-29HC AWP
Facility	SEC.29-T06N-R65W		

## WELLPATH DATA (153 stations)

MD [ft]	Inclination [°]	Azimuth [°]	TVD [ft]	Vert Sect [ft]	North [ft]	East [ft]	Latitude	Longitude	DLS [°/100ft]	Comments
0.00	0.000	29.000	0.00	0.00	0.00	0.00	40°27'09.594"N	104°41'17.974"W	0.00	
100.00	1.300	29.000	99.99	0.78	0.99	0.55	40°27'09.604"N	104°41'17.967"W	1.30	
131.00	1.100	37.400	130.98	1.20	1.54	0.90	40°27'09.609"N	104°41'17.962"W	0.86	
163.00	1.100	23.800	162.98	1.61	2.06	1.21	40°27'09.614"N	104°41'17.958"W	0.81	
195.00	1.000	32.100	194.97	2.02	2.58	1.48	40°27'09.619"N	104°41'17.955"W	0.57	
227.00	0.800	23.100	226.97	2.37	3.02	1.72	40°27'09.624"N	104°41'17.952"W	0.76	
259.00	1.000	19.900	258.97	2.77	3.49	1.90	40°27'09.628"N	104°41'17.949"W	0.64	
291.00	1.100	17.400	290.96	3.24	4.04	2.09	40°27'09.634"N	104°41'17.947"W	0.34	
322.00	0.900	21.800	321.96	3.67	4.55	2.27	40°27'09.639"N	104°41'17.945"W	0.69	
354.00	1.100	15.200	353.95	4.13	5.08	2.44	40°27'09.644"N	104°41'17.942"W	0.72	
386.00	1.000	12.200	385.95	4.63	5.65	2.58	40°27'09.650"N	104°41'17.941"W	0.36	
418.00	1.100	8.200	417.94	5.15	6.23	2.69	40°27'09.656"N	104°41'17.939"W	0.39	
450.00	1.100	9.800	449.93	5.70	6.84	2.78	40°27'09.662"N	104°41'17.938"W	0.10	
481.00	0.800	4.200	480.93	6.17	7.35	2.85	40°27'09.667"N	104°41'17.937"W	1.01	
513.00	0.600	36.500	512.93	6.47	7.70	2.96	40°27'09.670"N	104°41'17.936"W	1.36	
544.00	0.400	41.300	543.93	6.63	7.92	3.13	40°27'09.672"N	104°41'17.933"W	0.66	
577.00	0.400	59.300	576.93	6.71	8.06	3.31	40°27'09.674"N	104°41'17.931"W	0.38	
609.00	0.400	299.000	608.92	6.82	8.17	3.31	40°27'09.675"N	104°41'17.931"W	2.17	
640.00	0.900	269.400	639.92	6.97	8.22	2.97	40°27'09.675"N	104°41'17.936"W	1.89	
672.00	1.000	270.000	671.92	7.12	8.22	2.44	40°27'09.675"N	104°41'17.942"W	0.31	
704.00	1.000	262.800	703.91	7.26	8.18	1.88	40°27'09.675"N	104°41'17.950"W	0.39	
736.00	1.100	272.200	735.91	7.41	8.16	1.30	40°27'09.675"N	104°41'17.957"W	0.62	
768.00	0.800	269.600	767.90	7.57	8.17	0.77	40°27'09.675"N	104°41'17.964"W	0.95	
800.00	1.300	253.200	799.90	7.64	8.06	0.20	40°27'09.674"N	104°41'17.971"W	1.81	
832.00	2.400	238.700	831.88	7.48	7.61	-0.72	40°27'09.669"N	104°41'17.983"W	3.71	
863.00	2.800	244.600	862.85	7.22	6.95	-1.96	40°27'09.663"N	104°41'17.999"W	1.55	
895.00	2.900	244.700	894.81	7.00	6.27	-3.40	40°27'09.656"N	104°41'18.018"W	0.31	
927.00	3.200	248.800	926.76	6.82	5.60	-4.97	40°27'09.649"N	104°41'18.038"W	1.16	
959.00	4.600	246.300	958.69	6.62	4.76	-6.97	40°27'09.641"N	104°41'18.064"W	4.41	
1023.00	5.200	247.900	1022.46	6.09	2.64	-12.01	40°27'09.620"N	104°41'18.129"W	0.96	
1054.00	5.500	247.600	1053.32	5.84	1.54	-14.69	40°27'09.609"N	104°41'18.164"W	0.97	
1086.00	6.900	245.600	1085.13	5.47	0.17	-17.85	40°27'09.596"N	104°41'18.205"W	4.43	
1118.00	7.300	245.900	1116.89	4.99	-1.46	-21.46	40°27'09.580"N	104°41'18.252"W	1.26	
1150.00	7.200	243.100	1148.63	4.41	-3.20	-25.10	40°27'09.562"N	104°41'18.299"W	1.15	
1182.00	7.600	245.300	1180.36	3.80	-4.99	-28.82	40°27'09.545"N	104°41'18.347"W	1.53	
1212.00	8.700	250.600	1210.06	3.47	-6.57	-32.76	40°27'09.529"N	104°41'18.398"W	4.44	
1275.00	9.000	252.200	1272.31	3.25	-9.66	-41.94	40°27'09.499"N	104°41'18.517"W	0.62	
1307.00	9.200	252.000	1303.91	3.19	-11.22	-46.76	40°27'09.483"N	104°41'18.579"W	0.63	
1401.00	10.700	252.600	1396.49	3.08	-16.15	-62.23	40°27'09.434"N	104°41'18.779"W	1.60	
1432.00	10.800	251.800	1426.95	3.03	-17.92	-67.74	40°27'09.417"N	104°41'18.850"W	0.58	
1464.00	11.100	251.000	1458.37	2.89	-19.85	-73.50	40°27'09.398"N	104°41'18.925"W	1.05	
1496.00	12.200	251.800	1489.71	2.75	-21.91	-79.63	40°27'09.377"N	104°41'19.004"W	3.47	
1528.00	12.300	252.100	1520.98	2.66	-24.02	-86.08	40°27'09.357"N	104°41'19.087"W	0.37	
1559.00	12.100	250.600	1551.28	2.51	-26.11	-92.29	40°27'09.336"N	104°41'19.168"W	1.21	
1623.00	13.100	252.400	1613.74	2.22	-30.53	-105.53	40°27'09.292"N	104°41'19.339"W	1.68	TIED IN TO SURFACE SURVEY

## REFERENCE WELLPATH IDENTIFICATION

Operator	EXTRACTION OIL & GAS	Slot	SLOT#04 MATRIX D-29HC (453'FSL & 2335'FWL SEC.29)
Area	COLORADO	Well	MATRIX D-29HC
Field	WELD COUNTY (NAD83/TRUE NORTH)	Wellbore	MATRIX D-29HC AWP
Facility	SEC.29-T06N-R65W		

## WELLPATH DATA (153 stations)

MD [ft]	Inclination [°]	Azimuth [°]	TVD [ft]	Vert Sect [ft]	North [ft]	East [ft]	Latitude	Longitude	DLS [°/100ft]	Comments
1749.00	12.770	250.580	1736.54	1.63	-39.48	-132.27	40°27'09.204"N	104°41'19.685"W	0.42	
1844.00	13.720	261.220	1829.02	2.91	-44.69	-153.31	40°27'09.152"N	104°41'19.957"W	2.75	
1939.00	13.210	259.400	1921.41	5.84	-48.41	-175.12	40°27'09.116"N	104°41'20.239"W	0.70	
2033.00	12.120	257.600	2013.13	7.94	-52.50	-195.31	40°27'09.075"N	104°41'20.500"W	1.23	
2128.00	15.180	254.020	2105.43	9.07	-58.07	-217.01	40°27'09.020"N	104°41'20.781"W	3.34	
2223.00	14.540	253.810	2197.25	9.59	-64.82	-240.42	40°27'08.953"N	104°41'21.084"W	0.68	
2317.00	13.240	253.410	2288.50	9.95	-71.18	-262.07	40°27'08.891"N	104°41'21.364"W	1.39	
2412.00	12.310	252.870	2381.15	10.11	-77.27	-282.18	40°27'08.830"N	104°41'21.624"W	0.99	
2506.00	15.400	259.280	2472.41	11.57	-82.55	-304.02	40°27'08.778"N	104°41'21.907"W	3.67	
2601.00	14.330	259.140	2564.23	14.33	-87.11	-327.96	40°27'08.733"N	104°41'22.216"W	1.13	
2696.00	13.350	260.220	2656.47	17.08	-91.19	-350.32	40°27'08.693"N	104°41'22.506"W	1.07	
2792.00	13.300	261.000	2749.89	20.13	-94.80	-372.15	40°27'08.657"N	104°41'22.788"W	0.19	
2887.00	12.830	260.330	2842.43	23.10	-98.28	-393.34	40°27'08.623"N	104°41'23.062"W	0.52	
2981.00	12.370	246.100	2934.19	23.33	-104.11	-412.84	40°27'08.565"N	104°41'23.314"W	3.33	
3076.00	13.480	254.610	3026.79	22.53	-111.17	-432.82	40°27'08.495"N	104°41'23.573"W	2.32	
3170.00	11.950	251.010	3118.48	22.60	-117.25	-452.58	40°27'08.435"N	104°41'23.828"W	1.83	
3265.00	13.990	253.780	3211.05	22.53	-123.66	-472.91	40°27'08.372"N	104°41'24.091"W	2.24	
3360.00	12.230	250.400	3303.57	22.34	-130.24	-493.42	40°27'08.307"N	104°41'24.357"W	2.02	
3454.00	11.950	249.810	3395.49	21.45	-136.94	-511.93	40°27'08.241"N	104°41'24.596"W	0.33	
3549.00	11.440	258.790	3488.52	21.95	-142.17	-530.41	40°27'08.189"N	104°41'24.835"W	1.99	
3644.00	12.660	249.810	3581.44	22.42	-147.59	-549.42	40°27'08.136"N	104°41'25.081"W	2.35	
3738.00	14.360	257.140	3672.84	22.80	-153.74	-570.46	40°27'08.075"N	104°41'25.353"W	2.56	
3833.00	14.430	254.950	3764.86	24.18	-159.44	-593.37	40°27'08.018"N	104°41'25.650"W	0.58	
3928.00	14.270	256.060	3856.89	25.33	-165.33	-616.17	40°27'07.960"N	104°41'25.944"W	0.33	
4023.00	14.690	256.120	3948.88	26.73	-171.04	-639.23	40°27'07.904"N	104°41'26.243"W	0.44	
4118.00	14.090	255.240	4040.90	27.96	-176.88	-662.10	40°27'07.846"N	104°41'26.539"W	0.67	
4213.00	12.430	253.560	4133.36	28.62	-182.72	-683.09	40°27'07.788"N	104°41'26.810"W	1.79	
4307.00	11.150	253.150	4225.37	28.85	-188.22	-701.49	40°27'07.734"N	104°41'27.048"W	1.36	
4401.00	10.920	264.380	4317.65	30.72	-191.72	-719.06	40°27'07.699"N	104°41'27.275"W	2.30	
4496.00	13.550	264.220	4410.48	34.76	-193.72	-739.09	40°27'07.680"N	104°41'27.534"W	2.77	
4591.00	14.330	252.710	4502.70	36.98	-198.34	-761.39	40°27'07.634"N	104°41'27.823"W	3.03	
4686.00	12.590	249.220	4595.09	36.36	-205.51	-782.30	40°27'07.563"N	104°41'28.093"W	2.02	
4780.00	14.400	257.400	4686.50	36.69	-211.69	-803.29	40°27'07.502"N	104°41'28.365"W	2.79	
4875.00	12.420	255.230	4778.90	38.11	-216.88	-824.69	40°27'07.451"N	104°41'28.642"W	2.15	
4969.00	13.830	262.800	4870.45	40.52	-220.86	-845.62	40°27'07.411"N	104°41'28.912"W	2.36	
5064.00	15.610	257.460	4962.34	43.57	-225.06	-869.36	40°27'07.370"N	104°41'29.219"W	2.35	
5159.00	14.220	257.640	5054.13	45.64	-230.33	-893.24	40°27'07.318"N	104°41'29.528"W	1.46	
5253.00	11.880	256.210	5145.70	47.22	-235.11	-913.92	40°27'07.271"N	104°41'29.796"W	2.51	
5348.00	15.380	256.830	5238.01	48.73	-240.31	-935.69	40°27'07.219"N	104°41'30.077"W	3.69	
5443.00	11.410	252.970	5330.41	49.68	-245.94	-956.95	40°27'07.164"N	104°41'30.352"W	4.28	
5537.00	13.020	256.870	5422.28	50.49	-251.07	-976.15	40°27'07.113"N	104°41'30.601"W	1.92	
5632.00	13.610	255.090	5514.72	51.73	-256.37	-997.37	40°27'07.060"N	104°41'30.875"W	0.76	
5727.00	14.350	259.500	5606.91	53.59	-261.40	-1019.75	40°27'07.011"N	104°41'31.165"W	1.36	
5822.00	14.020	252.410	5699.02	54.92	-267.02	-1042.30	40°27'06.955"N	104°41'31.456"W	1.86	
5916.00	14.370	254.120	5790.15	55.15	-273.65	-1064.37	40°27'06.890"N	104°41'31.742"W	0.58	

## REFERENCE WELLPATH IDENTIFICATION

Operator	EXTRACTION OIL & GAS	Slot	SLOT#04 MATRIX D-29HC (453'FSL & 2335'FWL SEC.29)
Area	COLORADO	Well	MATRIX D-29HC
Field	WELD COUNTY (NAD83/TRUE NORTH)	Wellbore	MATRIX D-29HC AWP
Facility	SEC.29-T06N-R65W		

## WELLPATH DATA (153 stations) † = interpolated/extrapolated station

MD [ft]	Inclination [°]	Azimuth [°]	TVD [ft]	Vert Sect [ft]	North [ft]	East [ft]	Latitude	Longitude	DLS [°/100ft]	Comments
6011.00	14.730	255.510	5882.11	56.03	-279.90	-1087.40	40°27'06.828"N	104°41'32.040"W	0.53	
6106.00	12.970	250.610	5974.34	56.24	-286.46	-1109.15	40°27'06.763"N	104°41'32.321"W	2.22	
6201.00	14.070	257.230	6066.72	56.76	-292.55	-1130.47	40°27'06.703"N	104°41'32.597"W	2.00	
6296.00	14.140	246.300	6158.87	56.37	-299.77	-1152.37	40°27'06.632"N	104°41'32.880"W	2.80	
6391.00	13.170	250.800	6251.18	54.72	-308.00	-1173.21	40°27'06.550"N	104°41'33.150"W	1.51	
6485.00	12.380	253.700	6342.86	54.54	-314.35	-1193.00	40°27'06.487"N	104°41'33.406"W	1.08	
6580.00	9.800	254.800	6436.08	55.01	-319.33	-1210.58	40°27'06.438"N	104°41'33.633"W	2.72	
6699.00	10.310	280.370	6553.31	60.33	-320.06	-1230.84	40°27'06.431"N	104°41'33.895"W	3.74	
6793.00	18.740	309.450	6644.33	76.91	-308.92	-1250.83	40°27'06.541"N	104°41'34.154"W	11.60	
6888.00	23.650	323.590	6732.94	107.72	-283.86	-1273.95	40°27'06.789"N	104°41'34.453"W	7.43	
6983.00	32.660	335.220	6816.67	151.26	-245.14	-1296.07	40°27'07.171"N	104°41'34.739"W	11.07	
7077.00	38.010	342.580	6893.36	205.41	-194.44	-1315.39	40°27'07.672"N	104°41'34.989"W	7.26	
7173.00	48.930	348.960	6962.96	271.17	-130.49	-1331.22	40°27'08.304"N	104°41'35.194"W	12.25	
7267.00	54.320	350.830	7021.30	344.25	-57.97	-1344.10	40°27'09.021"N	104°41'35.361"W	5.94	
7363.00	69.080	354.070	7066.69	427.28	25.60	-1355.01	40°27'09.847"N	104°41'35.502"W	15.66	
7458.00	75.580	355.110	7095.51	515.80	115.67	-1363.52	40°27'10.737"N	104°41'35.612"W	6.92	
7484.00†	77.314	356.023	7101.61	540.45	140.86	-1365.48	40°27'10.986"N	104°41'35.637"W	7.49	CROSSED SETBACK BOUNDARY (479'FSL & 970'FWL, SEC.29)
7553.00	81.930	358.390	7114.04	606.13	208.63	-1368.77	40°27'11.655"N	104°41'35.680"W	7.49	
7648.00	82.590	357.650	7126.83	696.92	302.71	-1372.03	40°27'12.585"N	104°41'35.722"W	1.04	
7742.00	86.520	359.680	7135.75	786.86	396.24	-1374.20	40°27'13.509"N	104°41'35.750"W	4.70	
7837.00	86.820	0.520	7141.27	877.37	491.08	-1374.04	40°27'14.446"N	104°41'35.748"W	0.94	
7932.00	89.820	0.240	7144.05	967.83	586.02	-1373.41	40°27'15.384"N	104°41'35.740"W	3.17	LANDING POINT (924'FSL & 962'FWL, SEC.29)
8027.00	90.250	1.080	7143.99	1058.20	681.01	-1372.31	40°27'16.323"N	104°41'35.726"W	0.99	
8121.00	90.000	0.450	7143.79	1147.57	775.00	-1371.06	40°27'17.252"N	104°41'35.710"W	0.72	
8216.00	89.540	359.970	7144.17	1238.17	870.00	-1370.71	40°27'18.191"N	104°41'35.705"W	0.70	
8311.00	91.940	1.230	7142.94	1328.56	964.98	-1369.71	40°27'19.129"N	104°41'35.693"W	2.85	
8406.00	92.250	0.940	7139.47	1418.65	1059.90	-1367.92	40°27'20.067"N	104°41'35.669"W	0.45	
8500.00	90.830	359.960	7136.94	1508.14	1153.86	-1367.18	40°27'20.996"N	104°41'35.660"W	1.84	
8595.00	89.290	356.570	7136.85	1599.65	1248.80	-1370.05	40°27'21.934"N	104°41'35.697"W	3.92	
8690.00	89.480	357.440	7137.86	1691.70	1343.66	-1375.02	40°27'22.871"N	104°41'35.761"W	0.94	
8784.00	88.250	358.400	7139.73	1782.38	1437.58	-1378.43	40°27'23.799"N	104°41'35.806"W	1.66	
8879.00	88.520	358.020	7142.40	1873.89	1532.50	-1381.39	40°27'24.737"N	104°41'35.844"W	0.49	
8973.00	89.570	357.600	7143.97	1964.62	1626.41	-1384.99	40°27'25.665"N	104°41'35.891"W	1.20	
9068.00	90.180	357.900	7144.18	2056.37	1721.34	-1388.72	40°27'26.603"N	104°41'35.939"W	0.72	
9163.00	90.620	357.850	7143.51	2148.05	1816.27	-1392.24	40°27'27.541"N	104°41'35.985"W	0.47	
9258.00	90.950	358.660	7142.21	2239.57	1911.22	-1395.13	40°27'28.479"N	104°41'36.022"W	0.92	
9352.00	90.800	359.010	7140.78	2329.86	2005.19	-1397.04	40°27'29.408"N	104°41'36.047"W	0.41	
9447.00	89.720	0.750	7140.35	2420.61	2100.18	-1397.24	40°27'30.347"N	104°41'36.049"W	2.16	
9542.00	87.690	359.410	7142.49	2511.25	2195.15	-1397.11	40°27'31.285"N	104°41'36.048"W	2.56	
9636.00	85.620	356.390	7147.98	2601.79	2288.91	-1400.54	40°27'32.212"N	104°41'36.092"W	3.89	
9731.00	90.340	358.200	7151.33	2693.64	2383.71	-1405.02	40°27'33.148"N	104°41'36.150"W	5.32	
9826.00	91.330	357.760	7149.94	2785.27	2478.64	-1408.37	40°27'34.086"N	104°41'36.194"W	1.14	
9920.00	90.770	1.330	7148.22	2875.21	2572.61	-1409.11	40°27'35.015"N	104°41'36.203"W	3.84	
10015.00	90.770	1.060	7146.94	2965.30	2667.58	-1407.13	40°27'35.953"N	104°41'36.178"W	0.28	
10110.00	90.370	0.820	7146.00	3055.52	2762.56	-1405.57	40°27'36.892"N	104°41'36.158"W	0.49	

## REFERENCE WELLPATH IDENTIFICATION

Operator	EXTRACTION OIL & GAS	Slot	SLOT#04 MATRIX D-29HC (453'FSL & 2335'FWL SEC.29)
Area	COLORADO	Well	MATRIX D-29HC
Field	WELD COUNTY (NAD83/TRUE NORTH)	Wellbore	MATRIX D-29HC AWB
Facility	SEC.29-T06N-R65W		

## WELLPATH DATA (153 stations)

MD [ft]	Inclination [°]	Azimuth [°]	TVD [ft]	Vert Sect [ft]	North [ft]	East [ft]	Latitude	Longitude	DLS [°/100ft]	Comments
10204.00	90.000	359.630	7145.69	3145.16	2856.56	-1405.21	40°27'37.821"N	104°41'36.153"W	1.33	
10299.00	88.340	357.390	7147.07	3236.55	2951.51	-1407.68	40°27'38.759"N	104°41'36.185"W	2.93	
10394.00	87.070	356.090	7150.88	3328.64	3046.27	-1413.07	40°27'39.695"N	104°41'36.255"W	1.91	
10489.00	89.940	359.710	7153.35	3420.26	3141.15	-1416.55	40°27'40.633"N	104°41'36.300"W	4.86	
10583.00	90.460	1.700	7153.03	3509.65	3235.14	-1415.39	40°27'41.562"N	104°41'36.285"W	2.19	
10678.00	91.600	6.200	7151.32	3598.16	3329.87	-1408.85	40°27'42.498"N	104°41'36.201"W	4.89	
10773.00	89.320	6.000	7150.55	3685.34	3424.32	-1398.76	40°27'43.431"N	104°41'36.070"W	2.41	
10868.00	87.290	3.510	7153.37	3773.34	3518.94	-1390.89	40°27'44.366"N	104°41'35.968"W	3.38	
10962.00	88.740	1.430	7156.62	3861.74	3612.79	-1386.84	40°27'45.294"N	104°41'35.916"W	2.70	
11057.00	87.040	0.170	7160.12	3951.98	3707.71	-1385.51	40°27'46.232"N	104°41'35.899"W	2.23	
11151.00	86.920	359.980	7165.07	4041.57	3801.58	-1385.39	40°27'47.159"N	104°41'35.897"W	0.24	
11249.00	88.640	0.290	7168.87	4134.99	3899.51	-1385.16	40°27'48.127"N	104°41'35.894"W	1.78	
11344.00	90.520	0.430	7169.56	4225.51	3994.50	-1384.56	40°27'49.065"N	104°41'35.887"W	1.98	
11439.00	90.280	0.200	7168.90	4316.06	4089.49	-1384.04	40°27'50.004"N	104°41'35.880"W	0.35	
11533.00	92.680	0.980	7166.47	4405.48	4183.45	-1383.07	40°27'50.933"N	104°41'35.868"W	2.68	
11628.00	92.770	0.670	7161.96	4495.66	4278.33	-1381.71	40°27'51.870"N	104°41'35.850"W	0.34	
11715.00	92.250	0.180	7158.15	4578.46	4365.24	-1381.06	40°27'52.729"N	104°41'35.842"W	0.82	LAST BHI MWD SURVEY (584'FNL & 980'FWL, SEC.29)
11760.00	92.250	0.180	7156.38	4621.35	4410.21	-1380.92	40°27'53.173"N	104°41'35.840"W	0.00	PROJ TO TD (539'FNL & 980'FWL, SEC.29)

## HOLE & CASING SECTIONS - Ref Wellbore: MATRIX D-29HC AWB Ref Wellpath: MATRIX D-29HC AWP

String/Diameter	Start MD [ft]	End MD [ft]	Interval [ft]	Start TVD [ft]	End TVD [ft]	Start N/S [ft]	Start E/W [ft]	End N/S [ft]	End E/W [ft]
9.625in Casing	30.00	1610.00	1580.00	30.00	1601.07	0.09	0.05	-29.64	-102.74

## TARGETS

Name	TVD [ft]	North [ft]	East [ft]	Grid East [US ft]	Grid North [US ft]	Latitude	Longitude	Shape
SEC.29-T06N-R65W	-1.00	-22.97	-38.34	3225842.68	1408756.67	40°27'09.367"N	104°41'18.470"W	polygon
MATRIX PAD SHARON SPRINGS SEC.29	6719.00	-22.97	-38.34	3225842.68	1408756.67	40°27'09.367"N	104°41'18.470"W	polygon
SEC.29-T06N-R65W 460' SETBACK	6924.00	-22.97	-38.34	3225842.68	1408756.67	40°27'09.367"N	104°41'18.470"W	polygon
MATRIX D-29HC BHL REV-1 ON PLAT (465'FNL & 965'FWL SEC.29)	7090.00	4484.06	-1396.22	3224443.67	1413250.91	40°27'53.903"N	104°41'36.038"W	point
MATRIX D-29HC LP ON PLAT (465'FSL & 965'FWL SEC.29)	7090.00	126.84	-1370.64	3224509.12	1408894.28	40°27'10.847"N	104°41'35.704"W	point



# Actual Wellpath Report

MATRIX D-29HC AWP

Page 6 of 7



REFERENCE WELLPATH IDENTIFICATION			
Operator	EXTRACTION OIL & GAS	Slot	SLOT#04 MATRIX D-29HC (453'FSL & 2335'FWL SEC.29)
Area	COLORADO	Well	MATRIX D-29HC
Field	WELD COUNTY (NAD83/TRUE NORTH)	Wellbore	MATRIX D-29HC AWB
Facility	SEC.29-T06N-R65W		

WELLPATH COMPOSITION - Ref Wellbore: MATRIX D-29HC AWB					Ref Wellpath: MATRIX D-29HC AWP	
Start MD	End MD	Positional Uncertainty Model		Log Name/Comment		Wellbore
[ft]	[ft]					
0.00	1623.00	ISCWSA MWD, Rev. 4 (Standard)		MWD SURVEY-SURFACE HOLE <100-1623>		MATRIX D-29HC AWB
1623.00	11715.00	Custom BHI NaviTrak (Standard Rotating+Axial Corr) (Rockies 0.03Gt model)		BHI NAVITRAK MWD, STD ROTATING, AXIAL, ROCKIES GT <1749-11715>		MATRIX D-29HC AWB
11715.00	11760.00	Blind Drilling (std)		Projection to bit		MATRIX D-29HC AWB

REFERENCE WELLPATH IDENTIFICATION			
Operator	EXTRACTION OIL & GAS	Slot	SLOT#04 MATRIX D-29HC (453'FSL & 2335'FWL SEC.29)
Area	COLORADO	Well	MATRIX D-29HC
Field	WELD COUNTY (NAD83/TRUE NORTH)	Wellbore	MATRIX D-29HC AWB
Facility	SEC.29-T06N-R65W		

WELLPATH COMMENTS				
MD [ft]	Inclination [°]	Azimuth [°]	TVD [ft]	Comment
1623.00	13.100	252.400	1613.74	TIED IN TO SURFACE SURVEY
7484.00	77.314	356.023	7101.61	CROSSED SETBACK BOUNDARY (479'FSL & 970'FWL, SEC.29)
7932.00	89.820	0.240	7144.05	LANDING POINT (924'FSL & 962'FWL, SEC.29)
11715.00	92.250	0.180	7158.15	LAST BHI MWD SURVEY (584'FNL & 980'FWL, SEC.29)
11760.00	92.250	0.180	7156.38	PROJ TO TD (539'FNL & 980'FWL, SEC.29)