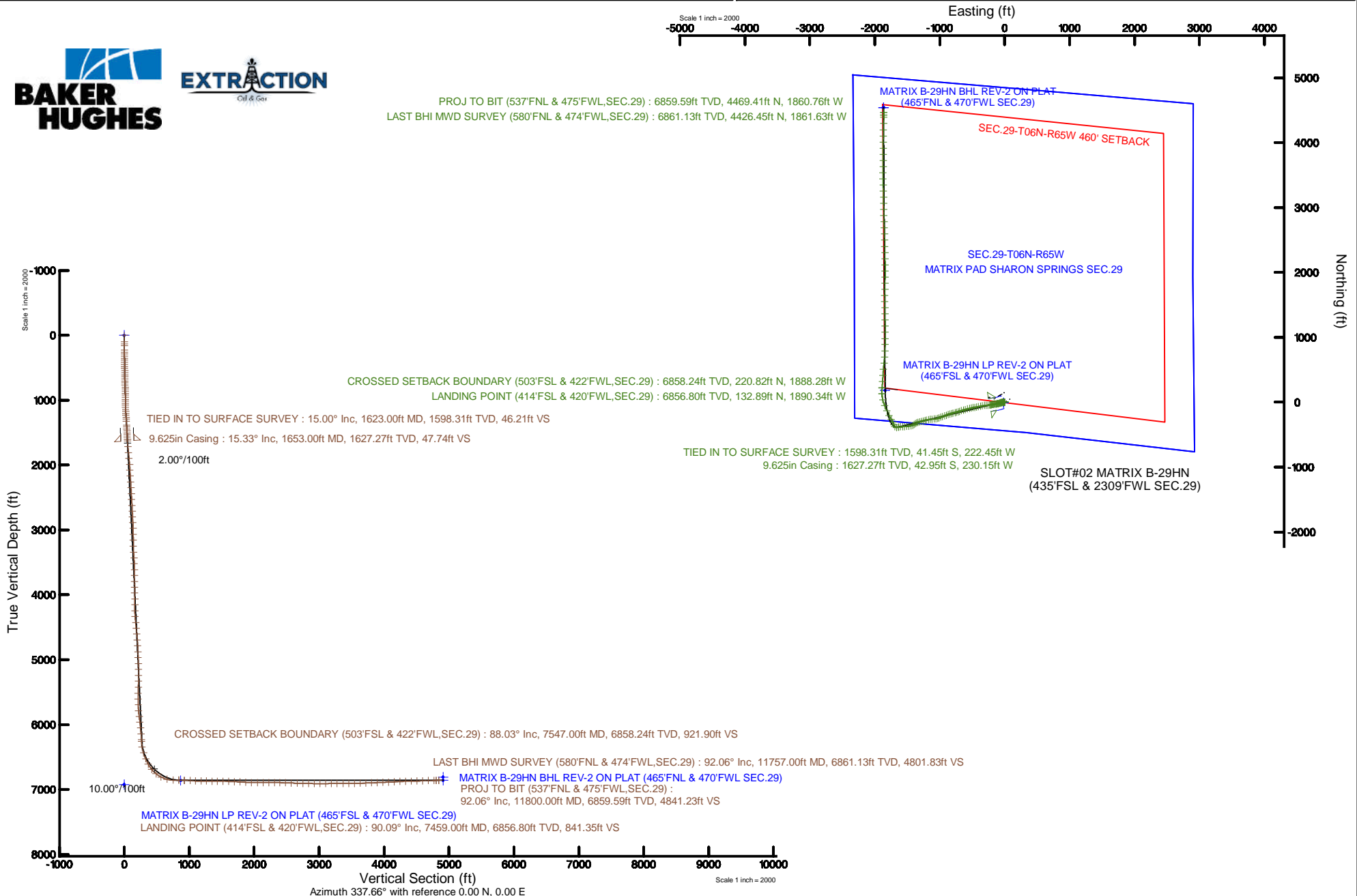


# EXTRACTION OIL & GAS

Location: COLORADO Slot: SLOT#02 MATRIX B-29HN (435'FSL & 2309'FWL SEC.29)  
Field: WELD COUNTY (NAD83/TRUE NORTH) Well: MATRIX B-29HN  
Facility: SEC.29-T06N-R65W Wellbore: MATRIX B-29HN AWB

Plot reference wellpath is MATRIX B-29HN REV-B.0 AWP	Grid System: NAD83 / Lambert Colorado SP, Northern Zone (501), US feet
True vertical depths are referenced to H&P 321 (RKB)	* = Wellpath was transformed from a different geodetic datum
Measured depths are referenced to H&P 321 (RKB)	North Reference: True north
H&P 321 (RKB) to Mean Sea Level: 4738 feet	Scale: True distance
Mean Sea Level to Mud line (At Slot: SLOT#02 MATRIX B-29HN (435'FSL & 2309'FWL SEC.29)): 0 feet	Depths are in feet
Coordinates are in feet referenced to Slot	Created by: hutaedr on 2017-02-21
	Database: WA_DEN_Deriver.Dbfn



REFERENCE WELLPATH IDENTIFICATION			
Operator	EXTRACTION OIL & GAS	Slot	SLOT#02 MATRIX B-29HN (435'FSL & 2309'FWL SEC.29)
Area	COLORADO	Well	MATRIX B-29HN
Field	WELD COUNTY (NAD83/TRUE NORTH)	Wellbore	MATRIX B-29HN AWP
Facility	SEC.29-T06N-R65W		

REPORT SETUP INFORMATION			
Projection System	NAD83 / Lambert Colorado SP, Northern Zone (501), US feet	Software System	WellArchitect® 5.0
North Reference	True	User	Hutaedr
Scale	0.999963	Report Generated	21/Feb/2017 at 09:55
Convergence at slot	0.53° East	Database/Source file	WA_DEN_Denver_Defn/MATRIX_B-29HN_AWP.xml

WELLPATH LOCATION						
	Local coordinates		Grid coordinates		Geographic coordinates	
	North[ft]	East[ft]	Easting[US ft]	Northing[US ft]	Latitude	Longitude
Slot Location	7.69	12.76	3225855.37	1408764.48	40°27'09.443"N	104°41'18.305"W
Facility Reference Pt			3225842.68	1408756.67	40°27'09.367"N	104°41'18.470"W
Field Reference Pt			3185481.27	1419166.81	40°28'55.560"N	104°49'59.556"W

WELLPATH DATUM			
Calculation method	Minimum curvature	H&P 321 (RKB) to Facility Vertical Datum	4738.00ft
Horizontal Reference Pt	Slot	H&P 321 (RKB) to Mean Sea Level	4738.00ft
Vertical Reference Pt	H&P 321 (RKB)	H&P 321 (RKB) to Mud Line at Slot (SLOT#02 MATRIX B-29HN (435'FSL & 2309'FWL SEC.29))	4738.00ft
MD Reference Pt	H&P 321 (RKB)	Section Origin	N 0.00, E 0.00 ft
Field Vertical Reference	Mean Sea Level	Section Azimuth	337.66°

## REFERENCE WELLPATH IDENTIFICATION

Operator	EXTRACTION OIL & GAS	Slot	SLOT#02 MATRIX B-29HN (435'FSL & 2309'FWL SEC.29)
Area	COLORADO	Well	MATRIX B-29HN
Field	WELD COUNTY (NAD83/TRUE NORTH)	Wellbore	MATRIX B-29HN AWP
Facility	SEC.29-T06N-R65W		

## WELLPATH DATA (158 stations)

MD [ft]	Inclination [°]	Azimuth [°]	TVD [ft]	Vert Sect [ft]	North [ft]	East [ft]	Latitude	Longitude	DLS [°/100ft]	Comments
0.00	0.000	52.600	0.00	0.00	0.00	0.00	40°27'09.443°N	104°41'18.305°W	0.00	
100.00	0.400	52.600	100.00	0.09	0.21	0.28	40°27'09.445°N	104°41'18.301°W	0.40	
131.00	0.400	335.100	131.00	0.23	0.38	0.32	40°27'09.447°N	104°41'18.301°W	1.62	
163.00	0.400	4.200	163.00	0.44	0.59	0.28	40°27'09.449°N	104°41'18.301°W	0.63	
227.00	0.200	8.900	227.00	0.73	0.92	0.31	40°27'09.452°N	104°41'18.301°W	0.31	
259.00	0.400	339.800	259.00	0.89	1.08	0.28	40°27'09.454°N	104°41'18.301°W	0.77	
291.00	0.500	343.600	291.00	1.14	1.32	0.20	40°27'09.456°N	104°41'18.302°W	0.33	
322.00	0.600	333.800	321.99	1.44	1.60	0.09	40°27'09.459°N	104°41'18.304°W	0.44	
354.00	0.600	325.100	353.99	1.77	1.88	-0.08	40°27'09.462°N	104°41'18.306°W	0.28	
386.00	0.800	303.500	385.99	2.12	2.14	-0.36	40°27'09.464°N	104°41'18.310°W	1.02	
418.00	2.100	280.400	417.98	2.62	2.37	-1.12	40°27'09.466°N	104°41'18.319°W	4.37	
450.00	2.800	277.500	449.95	3.33	2.58	-2.47	40°27'09.469°N	104°41'18.337°W	2.22	
481.00	3.200	267.800	480.91	4.00	2.65	-4.09	40°27'09.469°N	104°41'18.358°W	2.08	
513.00	4.000	265.100	512.84	4.64	2.52	-6.09	40°27'09.468°N	104°41'18.384°W	2.55	
545.00	4.300	264.100	544.76	5.32	2.30	-8.40	40°27'09.466°N	104°41'18.414°W	0.96	
577.00	4.800	262.400	576.66	6.00	2.00	-10.92	40°27'09.463°N	104°41'18.446°W	1.62	
609.00	5.900	260.300	608.52	6.70	1.54	-13.87	40°27'09.458°N	104°41'18.484°W	3.49	
640.00	6.600	258.600	639.33	7.38	0.92	-17.18	40°27'09.452°N	104°41'18.527°W	2.34	
672.00	7.500	257.900	671.09	8.10	0.12	-21.03	40°27'09.444°N	104°41'18.577°W	2.83	
704.00	5.600	259.400	702.88	8.79	-0.60	-24.60	40°27'09.437°N	104°41'18.623°W	5.96	
736.00	9.600	260.600	734.59	9.71	-1.33	-28.77	40°27'09.430°N	104°41'18.677°W	12.51	
768.00	9.800	261.000	766.14	10.93	-2.19	-34.10	40°27'09.421°N	104°41'18.746°W	0.66	
800.00	9.800	260.300	797.67	12.16	-3.07	-39.47	40°27'09.413°N	104°41'18.816°W	0.37	
832.00	9.800	258.300	829.20	13.26	-4.08	-44.82	40°27'09.403°N	104°41'18.885°W	1.06	
863.00	9.800	256.600	859.75	14.15	-5.23	-49.97	40°27'09.391°N	104°41'18.951°W	0.93	
895.00	9.900	254.600	891.28	14.91	-6.59	-55.27	40°27'09.378°N	104°41'19.020°W	1.11	
927.00	9.900	251.900	922.80	15.44	-8.18	-60.54	40°27'09.362°N	104°41'19.088°W	1.45	
959.00	10.100	248.800	954.32	15.70	-10.05	-65.77	40°27'09.344°N	104°41'19.156°W	1.79	
991.00	10.300	247.400	985.81	15.75	-12.16	-71.03	40°27'09.323°N	104°41'19.224°W	1.00	
1023.00	11.100	250.200	1017.26	15.87	-14.30	-76.57	40°27'09.302°N	104°41'19.295°W	2.98	
1054.00	11.300	252.800	1047.67	16.27	-16.21	-82.28	40°27'09.283°N	104°41'19.369°W	1.75	
1086.00	11.200	251.600	1079.05	16.77	-18.12	-88.22	40°27'09.264°N	104°41'19.446°W	0.80	
1118.00	11.700	255.700	1110.41	17.43	-19.90	-94.31	40°27'09.246°N	104°41'19.525°W	2.98	
1150.00	12.900	259.700	1141.68	18.63	-21.34	-100.97	40°27'09.232°N	104°41'19.611°W	4.60	
1182.00	13.700	261.900	1172.82	20.31	-22.52	-108.24	40°27'09.221°N	104°41'19.705°W	2.96	
1212.00	14.900	263.500	1201.89	22.24	-23.45	-115.59	40°27'09.211°N	104°41'19.800°W	4.21	
1243.00	15.400	264.700	1231.81	24.53	-24.28	-123.65	40°27'09.203°N	104°41'19.904°W	1.90	
1275.00	15.300	263.900	1262.67	26.96	-25.13	-132.07	40°27'09.195°N	104°41'20.013°W	0.73	
1307.00	15.400	262.900	1293.53	29.25	-26.10	-140.49	40°27'09.185°N	104°41'20.122°W	0.88	
1337.00	15.300	261.300	1322.46	31.23	-27.19	-148.35	40°27'09.174°N	104°41'20.224°W	1.45	
1401.00	15.500	258.100	1384.16	34.77	-30.23	-165.07	40°27'09.144°N	104°41'20.440°W	1.36	
1432.00	15.600	257.800	1414.03	36.26	-31.97	-173.20	40°27'09.127°N	104°41'20.545°W	0.41	
1464.00	15.300	257.200	1444.87	37.71	-33.81	-181.52	40°27'09.109°N	104°41'20.653°W	1.06	
1496.00	15.900	259.800	1475.69	39.33	-35.52	-189.95	40°27'09.092°N	104°41'20.762°W	2.88	
1528.00	15.700	262.400	1506.49	41.36	-36.87	-198.56	40°27'09.079°N	104°41'20.873°W	2.30	

## REFERENCE WELLPATH IDENTIFICATION

Operator	EXTRACTION OIL & GAS	Slot	SLOT#02 MATRIX B-29HN (435'FSL & 2309'FWL SEC.29)
Area	COLORADO	Well	MATRIX B-29HN
Field	WELD COUNTY (NAD83/TRUE NORTH)	Wellbore	MATRIX B-29HN AWP
Facility	SEC.29-T06N-R65W		

## WELLPATH DATA (158 stations)

MD [ft]	Inclination [°]	Azimuth [°]	TVD [ft]	Vert Sect [ft]	North [ft]	East [ft]	Latitude	Longitude	DLS [°/100ft]	Comments
1559.00	14.900	259.800	1536.39	43.26	-38.13	-206.64	40°27'09.066"N	104°41'20.978"W	3.40	
1591.00	14.300	257.400	1567.35	44.80	-39.72	-214.54	40°27'09.050"N	104°41'21.080"W	2.66	
1623.00	15.000	258.000	1598.31	46.21	-41.45	-222.45	40°27'09.033"N	104°41'21.182"W	2.24	TIED IN TO SURFACE SURVEY
1748.00	16.450	265.240	1718.64	54.46	-46.28	-255.92	40°27'08.986"N	104°41'21.615"W	1.95	
1843.00	17.980	267.010	1809.39	63.38	-48.16	-283.96	40°27'08.967"N	104°41'21.978"W	1.70	
1938.00	16.910	264.090	1900.02	72.14	-50.35	-312.35	40°27'08.945"N	104°41'22.345"W	1.45	
2032.00	20.920	259.200	1988.93	79.37	-54.90	-342.45	40°27'08.900"N	104°41'22.735"W	4.58	
2128.00	18.770	257.820	2079.22	85.52	-61.37	-374.39	40°27'08.837"N	104°41'23.148"W	2.29	
2222.00	17.570	256.910	2168.53	90.47	-67.78	-402.99	40°27'08.773"N	104°41'23.518"W	1.31	
2317.00	18.100	261.270	2258.97	96.24	-73.26	-431.54	40°27'08.719"N	104°41'23.887"W	1.51	
2411.00	16.090	258.430	2348.82	102.11	-78.09	-458.74	40°27'08.671"N	104°41'24.239"W	2.31	
2506.00	17.970	258.860	2439.65	107.42	-83.57	-486.02	40°27'08.617"N	104°41'24.592"W	1.98	
2600.00	16.280	257.210	2529.48	112.42	-89.28	-513.10	40°27'08.561"N	104°41'24.942"W	1.87	
2696.00	18.080	257.420	2621.19	117.17	-95.51	-540.76	40°27'08.499"N	104°41'25.300"W	1.88	
2791.00	21.150	254.350	2710.67	121.67	-103.34	-571.66	40°27'08.422"N	104°41'25.700"W	3.41	
2886.00	21.250	254.900	2799.24	125.83	-112.45	-604.78	40°27'08.332"N	104°41'26.128"W	0.23	
2981.00	19.820	254.490	2888.20	129.92	-121.24	-636.92	40°27'08.245"N	104°41'26.544"W	1.51	
3075.00	18.250	253.210	2977.06	133.23	-129.76	-666.37	40°27'08.161"N	104°41'26.925"W	1.73	
3170.00	17.270	251.630	3067.53	135.65	-138.50	-694.00	40°27'08.074"N	104°41'27.282"W	1.15	
3265.00	14.750	249.190	3158.84	136.95	-147.24	-718.69	40°27'07.988"N	104°41'27.602"W	2.75	
3359.00	14.540	256.060	3249.79	138.99	-154.34	-741.33	40°27'07.918"N	104°41'27.894"W	1.86	
3454.00	16.120	254.970	3341.41	142.41	-160.63	-765.64	40°27'07.856"N	104°41'28.209"W	1.69	
3549.00	18.340	259.840	3432.14	147.24	-166.69	-793.10	40°27'07.796"N	104°41'28.564"W	2.78	
3643.00	15.010	258.050	3522.18	152.55	-171.82	-819.57	40°27'07.745"N	104°41'28.906"W	3.58	
3738.00	15.240	245.310	3613.91	154.26	-179.58	-842.96	40°27'07.668"N	104°41'29.209"W	3.50	
3832.00	17.320	250.920	3704.15	154.55	-189.32	-867.41	40°27'07.572"N	104°41'29.525"W	2.77	
3927.00	19.440	250.790	3794.29	156.21	-199.14	-895.70	40°27'07.475"N	104°41'29.891"W	2.23	
4022.00	19.660	249.920	3883.82	157.70	-209.83	-925.64	40°27'07.369"N	104°41'30.279"W	0.38	
4117.00	19.930	250.440	3973.20	159.12	-220.74	-955.91	40°27'07.262"N	104°41'30.670"W	0.34	
4212.00	17.920	248.870	4063.06	160.21	-231.43	-984.80	40°27'07.156"N	104°41'31.044"W	2.18	
4306.00	15.490	246.670	4153.09	160.30	-241.62	-1009.82	40°27'07.055"N	104°41'31.367"W	2.67	
4401.00	15.970	252.060	4244.54	161.08	-250.67	-1033.90	40°27'06.966"N	104°41'31.679"W	1.62	
4495.00	16.050	264.800	4334.92	165.90	-255.83	-1059.16	40°27'06.915"N	104°41'32.006"W	3.73	
4590.00	19.210	265.440	4425.45	174.54	-258.26	-1087.82	40°27'06.891"N	104°41'32.376"W	3.33	
4685.00	17.390	264.040	4515.64	183.32	-260.98	-1117.52	40°27'06.864"N	104°41'32.761"W	1.97	
4779.00	19.430	261.670	4604.82	191.07	-264.70	-1146.97	40°27'06.827"N	104°41'33.141"W	2.31	
4874.00	16.580	260.730	4695.16	197.96	-269.18	-1175.99	40°27'06.783"N	104°41'33.517"W	3.02	
4969.00	17.820	258.790	4785.91	203.83	-274.19	-1203.62	40°27'06.733"N	104°41'33.874"W	1.44	
5063.00	15.040	256.860	4876.07	208.55	-279.76	-1229.61	40°27'06.678"N	104°41'34.210"W	3.01	
5158.00	16.680	253.030	4967.45	211.80	-286.54	-1254.66	40°27'06.611"N	104°41'34.534"W	2.05	
5253.00	18.280	258.010	5058.07	215.75	-293.61	-1282.28	40°27'06.541"N	104°41'34.892"W	2.30	
5347.00	15.640	249.910	5147.98	218.89	-301.03	-1308.61	40°27'06.468"N	104°41'35.232"W	3.76	
5442.00	13.860	249.960	5239.85	219.85	-309.33	-1331.32	40°27'06.386"N	104°41'35.526"W	1.87	
5537.00	14.250	241.390	5332.01	219.03	-318.83	-1352.28	40°27'06.292"N	104°41'35.797"W	2.23	
5632.00	13.450	234.760	5424.26	215.29	-330.80	-1371.57	40°27'06.174"N	104°41'36.047"W	1.87	

## REFERENCE WELLPATH IDENTIFICATION

Operator	EXTRACTION OIL & GAS	Slot	SLOT#02 MATRIX B-29HN (435'FSL & 2309'FWL SEC.29)
Area	COLORADO	Well	MATRIX B-29HN
Field	WELD COUNTY (NAD83/TRUE NORTH)	Wellbore	MATRIX B-29HN AWP
Facility	SEC.29-T06N-R65W		

## WELLPATH DATA (158 stations) † = interpolated/extrapolated station

MD [ft]	Inclination [°]	Azimuth [°]	TVD [ft]	Vert Sect [ft]	North [ft]	East [ft]	Latitude	Longitude	DLS [°/100ft]	Comments
5727.00	16.910	242.970	5515.94	211.69	-343.46	-1392.91	40°27'06.049"N	104°41'36.323"W	4.28	
5821.00	16.560	251.300	5605.97	211.42	-353.97	-1417.78	40°27'05.945"N	104°41'36.644"W	2.58	
5916.00	18.090	253.050	5696.66	213.66	-362.61	-1444.71	40°27'05.859"N	104°41'36.993"W	1.70	
6010.00	20.030	260.340	5785.51	218.57	-369.57	-1474.55	40°27'05.791"N	104°41'37.379"W	3.26	
6105.00	21.660	268.030	5874.31	228.24	-372.90	-1508.12	40°27'05.758"N	104°41'37.813"W	3.35	
6201.00	20.080	267.350	5964.01	239.96	-374.27	-1542.29	40°27'05.744"N	104°41'38.255"W	1.67	
6295.00	17.960	264.230	6052.87	249.53	-376.48	-1572.83	40°27'05.722"N	104°41'38.650"W	2.50	
6390.00	17.470	262.900	6143.37	257.45	-379.71	-1601.56	40°27'05.690"N	104°41'39.022"W	0.67	
6485.00	18.510	256.690	6233.73	263.57	-384.95	-1630.39	40°27'05.639"N	104°41'39.394"W	2.30	
6510.00	17.190	255.890	6257.53	264.72	-386.76	-1637.83	40°27'05.621"N	104°41'39.491"W	5.37	
6605.00	18.450	277.250	6348.07	274.16	-388.29	-1666.39	40°27'05.606"N	104°41'39.860"W	6.97	
6699.00	19.990	316.730	6437.19	296.60	-374.66	-1692.27	40°27'05.740"N	104°41'40.195"W	13.67	
6794.00	21.650	342.850	6526.18	329.30	-346.02	-1708.60	40°27'06.023"N	104°41'40.406"W	9.85	
6888.00	27.220	336.680	6611.74	368.10	-309.68	-1722.24	40°27'06.382"N	104°41'40.583"W	6.51	
6983.00	39.860	329.030	6690.79	420.15	-263.41	-1746.61	40°27'06.839"N	104°41'40.898"W	14.01	
7078.00	51.240	333.940	6757.23	487.46	-203.82	-1778.67	40°27'07.428"N	104°41'41.313"W	12.53	
7173.00	62.750	335.680	6808.90	566.89	-131.82	-1812.45	40°27'08.140"N	104°41'41.750"W	12.21	
7268.00	75.580	335.520	6842.62	655.44	-51.14	-1849.05	40°27'08.937"N	104°41'42.223"W	13.51	
7364.00	88.680	347.520	6855.78	749.92	38.74	-1878.92	40°27'09.825"N	104°41'42.610"W	18.41	
7459.00	90.090	358.650	6856.80	841.35	132.89	-1890.34	40°27'10.755"N	104°41'42.758"W	11.81	LANDING POINT (414'FSL & 420'FWL SEC.29)
7547.00†	88.033	4.032	6858.24	921.90	220.82	-1888.28	40°27'11.624"N	104°41'42.731"W	6.55	CROSSED SETBACK BOUNDARY (503'FSL & 422'FWL, SEC.29)
7554.00	87.870	4.460	6858.49	928.15	227.80	-1887.77	40°27'11.693"N	104°41'42.724"W	6.55	
7649.00	86.330	4.130	6863.30	1012.96	322.41	-1880.66	40°27'12.628"N	104°41'42.632"W	1.66	
7743.00	87.290	3.710	6868.53	1097.13	416.04	-1874.24	40°27'13.553"N	104°41'42.550"W	1.11	
7838.00	90.090	4.990	6870.70	1181.98	510.73	-1867.04	40°27'14.489"N	104°41'42.457"W	3.24	
7932.00	90.090	6.970	6870.56	1264.73	604.21	-1857.25	40°27'15.413"N	104°41'42.330"W	2.11	
8027.00	87.810	4.090	6872.30	1348.68	698.74	-1848.10	40°27'16.347"N	104°41'42.212"W	3.87	
8122.00	91.570	1.100	6872.81	1434.80	793.61	-1843.80	40°27'17.284"N	104°41'42.156"W	5.06	
8217.00	89.290	1.240	6872.10	1521.91	888.58	-1841.86	40°27'18.223"N	104°41'42.131"W	2.40	
8311.00	87.200	359.020	6874.98	1608.72	982.53	-1841.64	40°27'19.151"N	104°41'42.128"W	3.24	
8406.00	87.290	0.020	6879.54	1696.79	1077.41	-1842.44	40°27'20.089"N	104°41'42.139"W	1.06	
8501.00	86.860	0.470	6884.39	1784.39	1172.29	-1842.03	40°27'21.026"N	104°41'42.134"W	0.65	
8595.00	88.060	358.800	6888.56	1871.48	1266.19	-1842.63	40°27'21.954"N	104°41'42.141"W	2.19	
8690.00	87.840	359.590	6891.95	1959.79	1361.12	-1843.96	40°27'22.892"N	104°41'42.159"W	0.86	
8785.00	90.520	358.930	6893.31	2048.10	1456.09	-1845.19	40°27'23.831"N	104°41'42.175"W	2.91	
8879.00	90.120	359.630	6892.79	2135.49	1550.08	-1846.37	40°27'24.760"N	104°41'42.190"W	0.86	
8974.00	89.850	0.570	6892.81	2223.30	1645.08	-1846.21	40°27'25.698"N	104°41'42.188"W	1.03	
9068.00	89.290	0.790	6893.52	2309.81	1739.07	-1845.09	40°27'26.627"N	104°41'42.174"W	0.64	
9163.00	88.770	1.030	6895.13	2397.08	1834.04	-1843.58	40°27'27.566"N	104°41'42.154"W	0.60	
9258.00	88.120	1.100	6897.71	2484.24	1928.99	-1841.82	40°27'28.504"N	104°41'42.132"W	0.69	
9353.00	88.330	359.600	6900.65	2571.84	2023.94	-1841.24	40°27'29.442"N	104°41'42.124"W	1.59	
9448.00	88.090	359.750	6903.62	2659.87	2118.89	-1841.78	40°27'30.380"N	104°41'42.131"W	0.30	
9542.00	89.010	358.690	6905.99	2747.27	2212.85	-1843.06	40°27'31.309"N	104°41'42.148"W	1.49	
9637.00	89.200	359.250	6907.48	2835.76	2307.83	-1844.76	40°27'32.247"N	104°41'42.170"W	0.62	
9732.00	89.140	359.210	6908.85	2924.10	2402.81	-1846.04	40°27'33.186"N	104°41'42.187"W	0.08	

## REFERENCE WELLPATH IDENTIFICATION

Operator	EXTRACTION OIL & GAS	Slot	SLOT#02 MATRIX B-29HN (435'FSL & 2309'FWL SEC.29)
Area	COLORADO	Well	MATRIX B-29HN
Field	WELD COUNTY (NAD83/TRUE NORTH)	Wellbore	MATRIX B-29HN AWB
Facility	SEC.29-T06N-R65W		

## WELLPATH DATA (158 stations)

MD [ft]	Inclination [°]	Azimuth [°]	TVD [ft]	Vert Sect [ft]	North [ft]	East [ft]	Latitude	Longitude	DLS [°/100ft]	Comments
9827.00	90.090	357.350	6909.49	3013.01	2497.76	-1848.89	40°27'34.124"N	104°41'42.224"W	2.20	
9921.00	90.520	358.310	6908.99	3101.25	2591.69	-1852.45	40°27'35.052"N	104°41'42.270"W	1.12	
10016.00	90.340	358.530	6908.28	3190.08	2686.65	-1855.07	40°27'35.991"N	104°41'42.304"W	0.30	
10110.00	89.510	358.510	6908.40	3277.92	2780.62	-1857.50	40°27'36.919"N	104°41'42.335"W	0.88	
10205.00	91.260	359.260	6907.76	3366.47	2875.59	-1859.35	40°27'37.858"N	104°41'42.359"W	2.00	
10300.00	90.520	358.820	6906.29	3454.92	2970.57	-1860.94	40°27'38.796"N	104°41'42.380"W	0.91	
10394.00	89.880	358.670	6905.96	3542.63	3064.54	-1863.00	40°27'39.725"N	104°41'42.407"W	0.70	
10489.00	91.850	358.560	6904.53	3631.33	3159.50	-1865.29	40°27'40.663"N	104°41'42.436"W	2.08	
10584.00	91.660	358.210	6901.62	3720.15	3254.42	-1867.97	40°27'41.601"N	104°41'42.471"W	0.42	
10679.00	92.160	358.570	6898.45	3808.95	3349.33	-1870.64	40°27'42.539"N	104°41'42.506"W	0.65	
10773.00	92.250	358.350	6894.83	3896.76	3443.22	-1873.16	40°27'43.467"N	104°41'42.539"W	0.25	
10868.00	92.590	1.220	6890.82	3984.68	3538.13	-1873.52	40°27'44.404"N	104°41'42.543"W	3.04	
10962.00	92.960	0.500	6886.27	4070.98	3632.01	-1872.11	40°27'45.332"N	104°41'42.525"W	0.86	
11057.00	92.250	359.880	6881.95	4158.64	3726.91	-1871.79	40°27'46.270"N	104°41'42.521"W	0.99	
11152.00	92.890	359.860	6877.69	4246.50	3821.81	-1872.01	40°27'47.208"N	104°41'42.524"W	0.67	
11247.00	91.910	0.480	6873.72	4334.19	3916.72	-1871.73	40°27'48.146"N	104°41'42.520"W	1.22	
11341.00	90.710	1.190	6871.57	4420.58	4010.69	-1870.36	40°27'49.074"N	104°41'42.503"W	1.48	
11436.00	91.420	1.280	6869.80	4507.64	4105.65	-1868.31	40°27'50.012"N	104°41'42.476"W	0.75	
11530.00	92.440	1.380	6866.64	4593.68	4199.57	-1866.13	40°27'50.940"N	104°41'42.448"W	1.09	
11625.00	90.650	1.190	6864.07	4680.68	4294.51	-1864.00	40°27'51.879"N	104°41'42.421"W	1.89	
11720.00	91.510	0.870	6862.28	4767.88	4389.47	-1862.29	40°27'52.817"N	104°41'42.399"W	0.97	
11757.00	92.060	1.170	6861.13	4801.83	4426.45	-1861.63	40°27'53.182"N	104°41'42.390"W	1.69	LAST BHI MWD SURVEY (580'FNL & 474'FWL, SEC.29)
11800.00	92.060	1.170	6859.59	4841.23	4469.41	-1860.76	40°27'53.607"N	104°41'42.379"W	0.00	PROJ TO BIT (537'FNL & 475'FWL, SEC.29)

## HOLE & CASING SECTIONS - Ref Wellbore: MATRIX B-29HN AWB Ref Wellpath: MATRIX B-29HN AWP

String/Diameter	Start MD [ft]	End MD [ft]	Interval [ft]	Start TVD [ft]	End TVD [ft]	Start N/S [ft]	Start E/W [ft]	End N/S [ft]	End E/W [ft]
9.625in Casing	30.00	1653.00	1623.00	30.00	1627.27	0.02	0.02	-42.95	-230.15

### REFERENCE WELLPATH IDENTIFICATION

Operator	EXTRACTION OIL & GAS	Slot	SLOT#02 MATRIX B-29HN (435'FSL & 2309'FWL SEC.29)
Area	COLORADO	Well	MATRIX B-29HN
Field	WELD COUNTY (NAD83/TRUE NORTH)	Wellbore	MATRIX B-29HN AWB
Facility	SEC.29-T06N-R65W		

### TARGETS

Name	TVD [ft]	North [ft]	East [ft]	Grid East [US ft]	Grid North [US ft]	Latitude	Longitude	Shape
SEC.29-T06N-R65W	0.00	-7.69	-12.76	3225842.68	1408756.67	40°27'09.367"N	104°41'18.470"W	polygon
MATRIX PAD SHARON SPRINGS SEC.29	6720.00	-7.69	-12.76	3225842.68	1408756.67	40°27'09.367"N	104°41'18.470"W	polygon
MATRIX B-29HN BHL REV-1 ON PLAT (465'FNL & 470'FWL SEC.29)	6810.00	4541.27	-1865.92	3223948.03	1413288.30	40°27'54.317"N	104°41'42.446"W	point
MATRIX B-29HN LP REV-1 ON PLAT (465'FSL & 470'FWL SEC.29)	6810.00	183.64	-1840.43	3224013.40	1408931.26	40°27'11.257"N	104°41'42.112"W	point
MATRIX B-29HN BHL REV-2 ON PLAT (465'FNL & 470'FWL SEC.29)	6860.00	4541.27	-1865.92	3223948.03	1413288.30	40°27'54.317"N	104°41'42.446"W	point
MATRIX B-29HN LP REV-2 ON PLAT (465'FSL & 470'FWL SEC.29)	6860.00	183.64	-1840.43	3224013.40	1408931.26	40°27'11.257"N	104°41'42.112"W	point
SEC.29-T06N-R65W 460' SETBACK	6925.00	-7.69	-12.76	3225842.68	1408756.67	40°27'09.367"N	104°41'18.470"W	polygon

### WELLPATH COMPOSITION - Ref Wellbore: MATRIX B-29HN AWB Ref Wellpath: MATRIX B-29HN AWP

Start MD [ft]	End MD [ft]	Positional Uncertainty Model	Log Name/Comment	Wellbore
0.00	1623.00	ISCWSA MWD, Rev. 4 (Standard)	MWD SURVEY-SURFACE HOLE <100-1623>	MATRIX B-29HN AWB
1623.00	11757.00	Custom BHI NaviTrak (Standard Rotating+Axial Corr) (Rockies 0.03Gt model)	BHI NAVITRAK MWD, STD ROTATING, AXIAL, ROCKIES GT <1748-11757>	MATRIX B-29HN AWB
11757.00	11800.00	Blind Drilling (std)	Projection to bit	MATRIX B-29HN AWB



# Actual Wellpath Report

MATRIX B-29HN AWP

Page 7 of 7



## REFERENCE WELLPATH IDENTIFICATION

Operator	EXTRACTION OIL & GAS	Slot	SLOT#02 MATRIX B-29HN (435'FSL & 2309'FWL SEC.29)
Area	COLORADO	Well	MATRIX B-29HN
Field	WELD COUNTY (NAD83/TRUE NORTH)	Wellbore	MATRIX B-29HN AWB
Facility	SEC.29-T06N-R65W		

## WELLPATH COMMENTS

MD [ft]	Inclination [°]	Azimuth [°]	TVD [ft]	Comment
1623.00	15.000	258.000	1598.31	TIED IN TO SURFACE SURVEY
7459.00	90.090	358.650	6856.80	LANDING POINT (414'FSL & 420'FWL,SEC.29)
7547.00	88.033	4.032	6858.24	CROSSED SETBACK BOUNDARY (503'FSL & 422'FWL,SEC.29)
11757.00	92.060	1.170	6861.13	LAST BHI MWD SURVEY (580'FNL & 474'FWL,SEC.29)
11800.00	92.060	1.170	6859.59	PROJ TO BIT (537'FNL & 475'FWL,SEC.29)