

OPERATOR: **Extraction Oil & Gas**

WELL NAME: **Matrix B-29HN**

FIELD NAME: DJ Basin - Wattenberg

DRILLING RIG: H&P 321

API #: 05-123-40697

LAT/LONG: 40.452623, -104.688418

SURFACE HOLE: SESW S29-T6N-R65W, 435' FSL, 2309' FWL

BOTTOM HOLE: S29-T6N-R65W, 465' FNL, 470' FWL

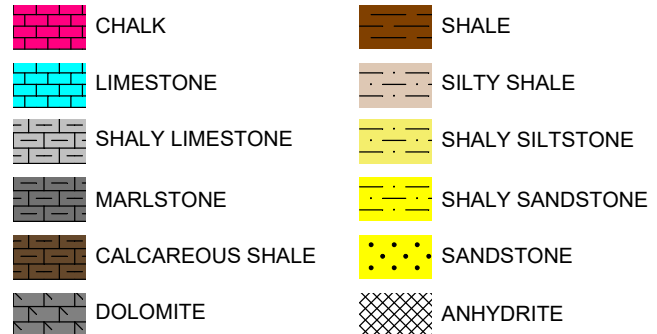


Earth Science Agency, LLC

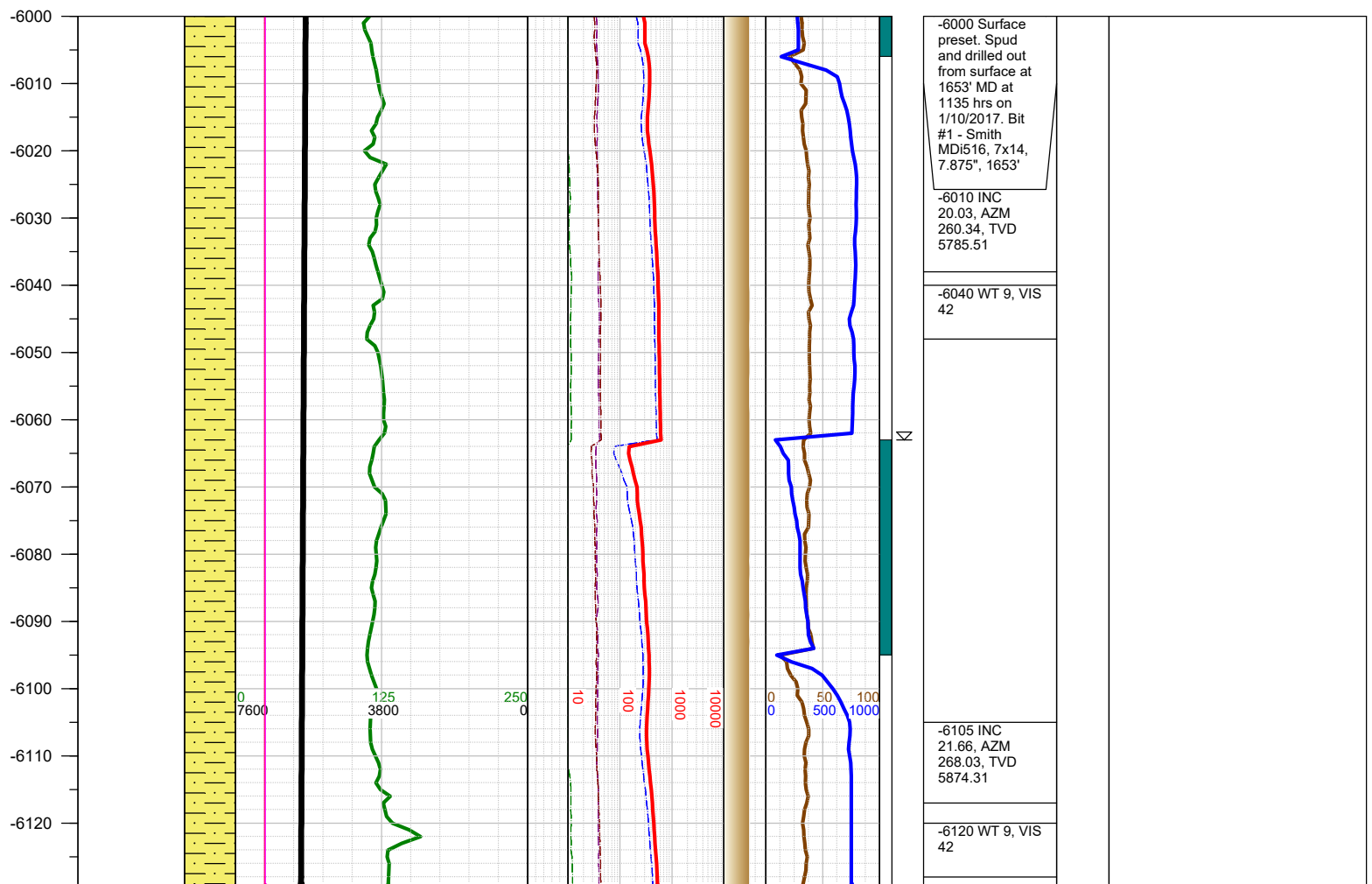
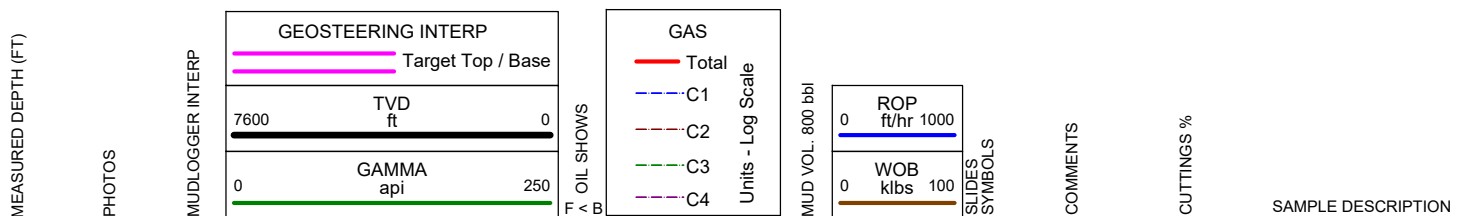
COUNTY: Weld
STATE: Colorado
GROUND ELEVATION: 4708'
KELLY BUSHING: 4738'
DRILLING FLUID: OBM
TVD VS. MD: 6860' / 11800'
SPUD DATE: January 10, 2017
TD DATE: January 12, 2017

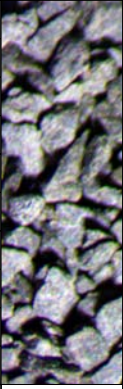
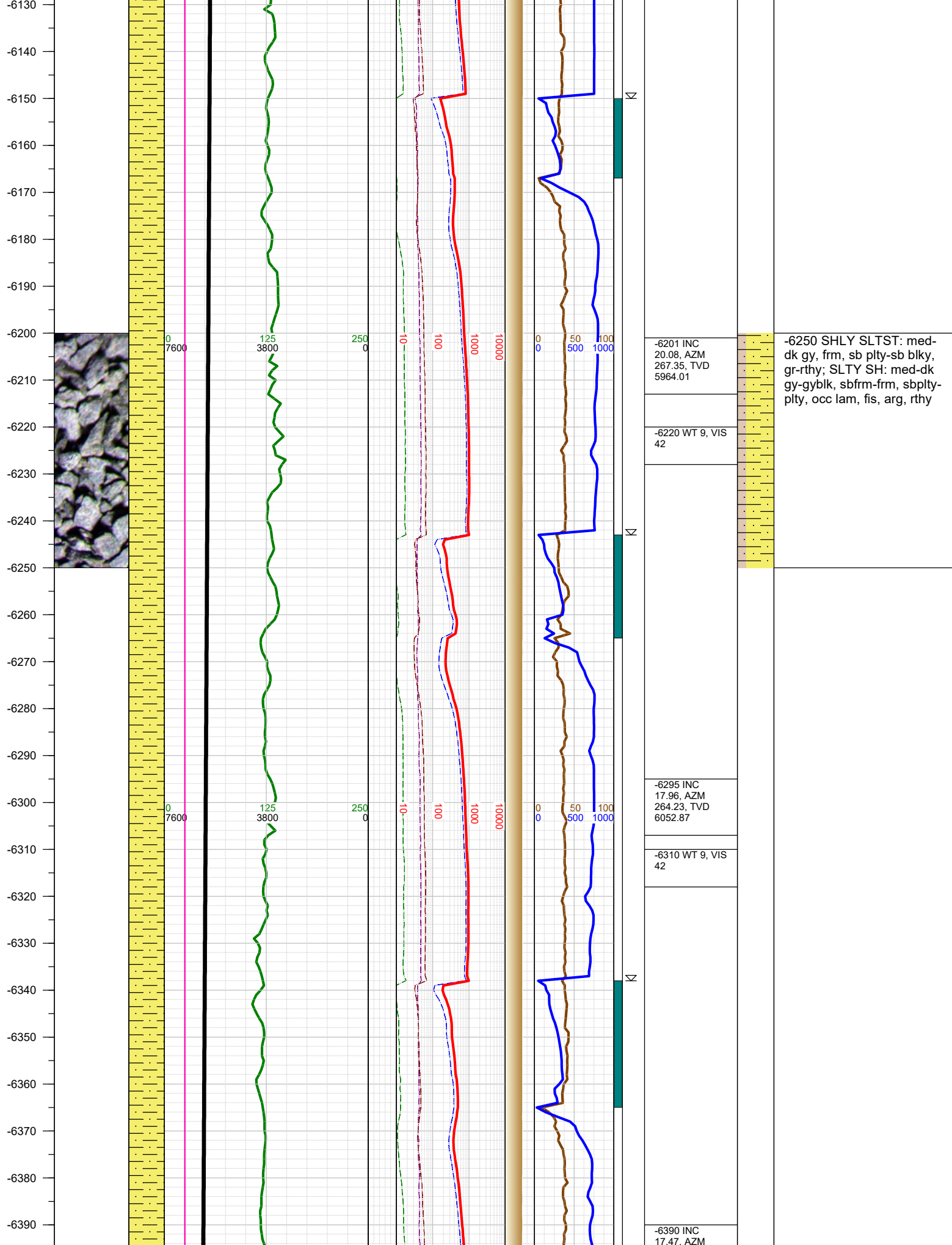
DEPTHS LOGGED: 6000' - 11800'
DATES LOGGED: January 10, 2017 - January 12, 2017
GEOLOGISTS: Ryan Gall, Brad Wilson
SCALE: 5" = 100'

LEGEND



FORMATION \approx CONNECTION Δ MIDNIGHT NEW BIT GAS SHOW FAULT





-6201 INC
20.08, AZM
267.35, TVD
5964.01

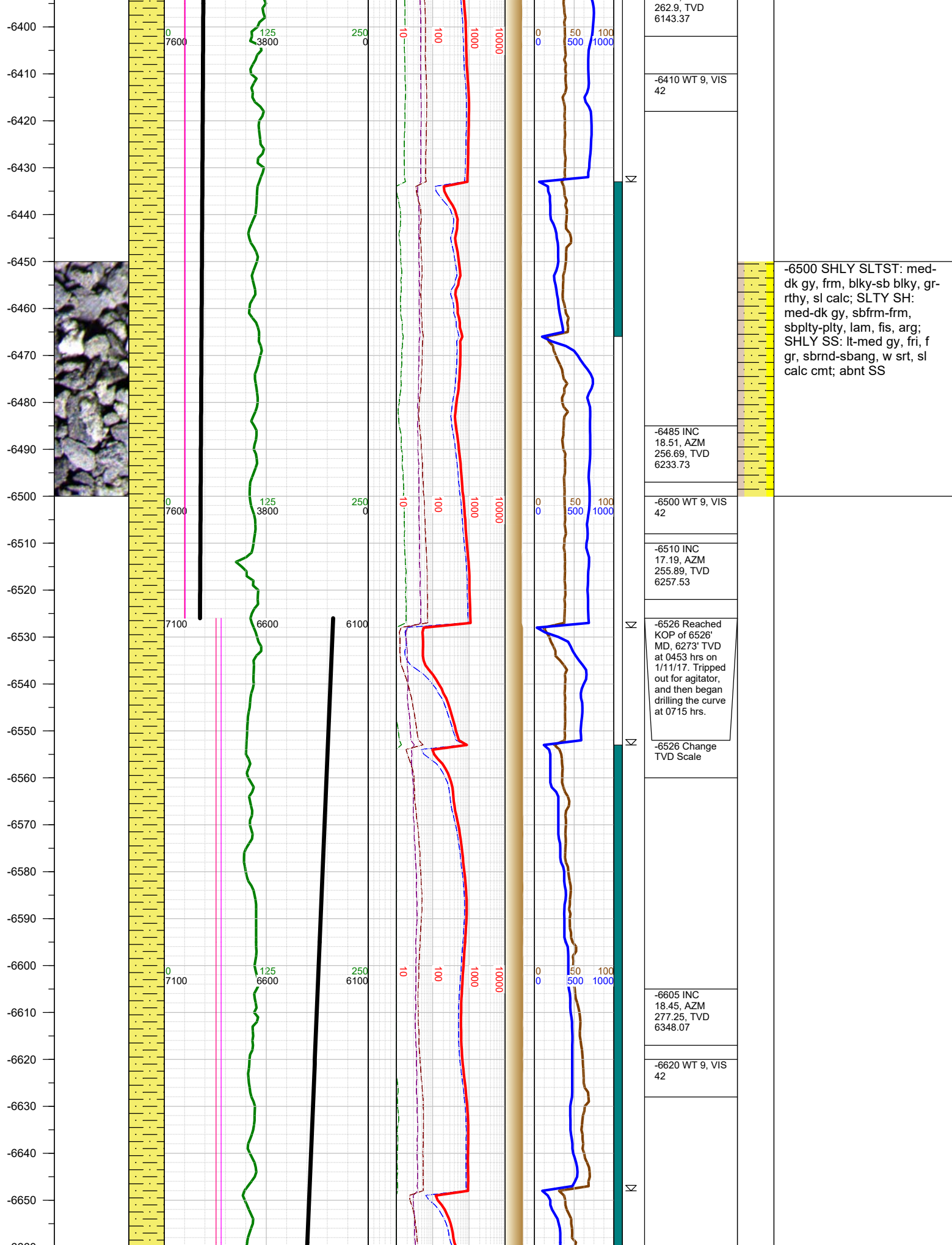
-6220 WT 9, VIS
42

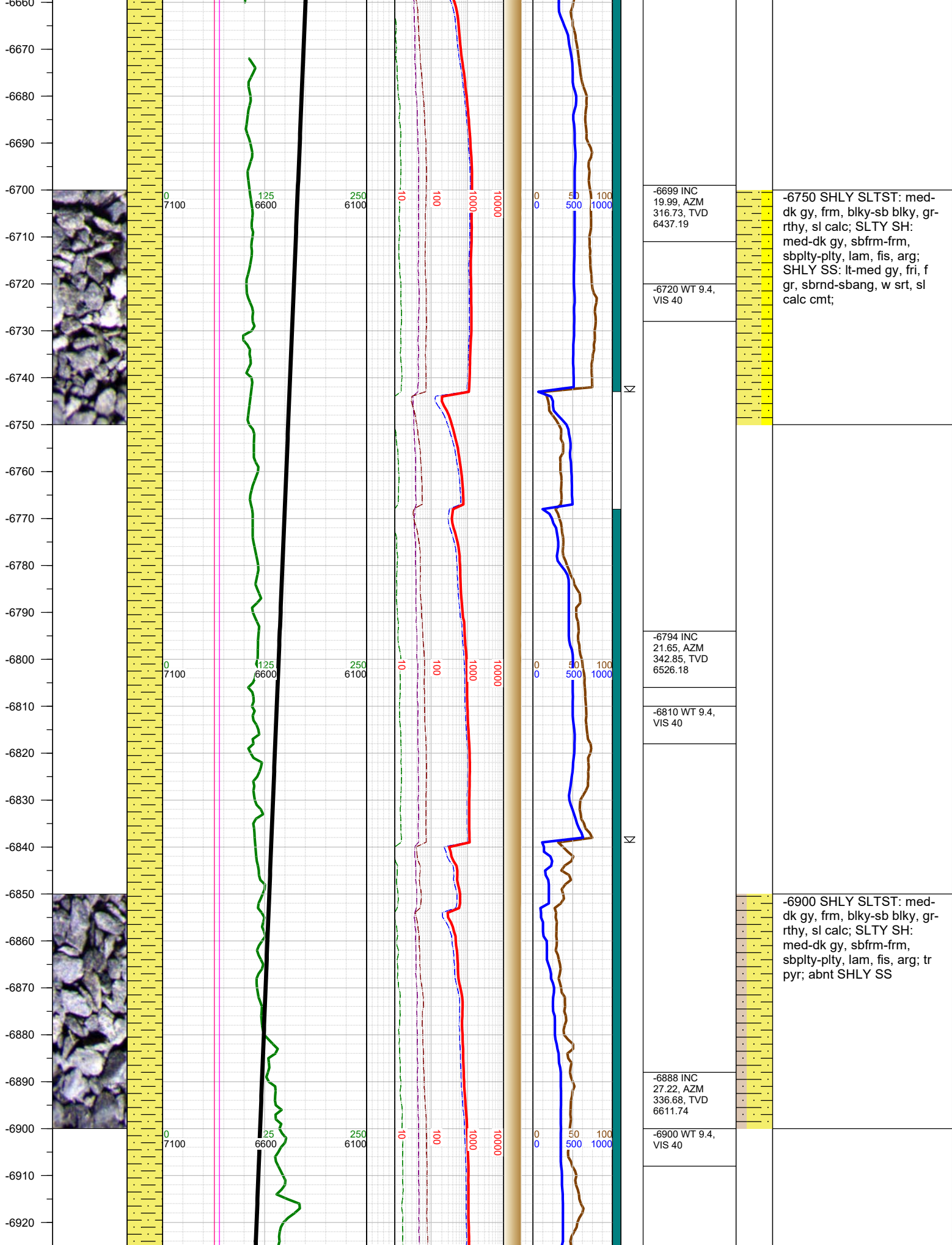
-6250 SHLY SLTST: med-
dk gy, frm, sb plty-sb blk,
gr-rthy; SLTY SH: med-dk
gy-gyblk, sbfrm-frm, sbplty-
plty, occ lam, fis, arg, rthy

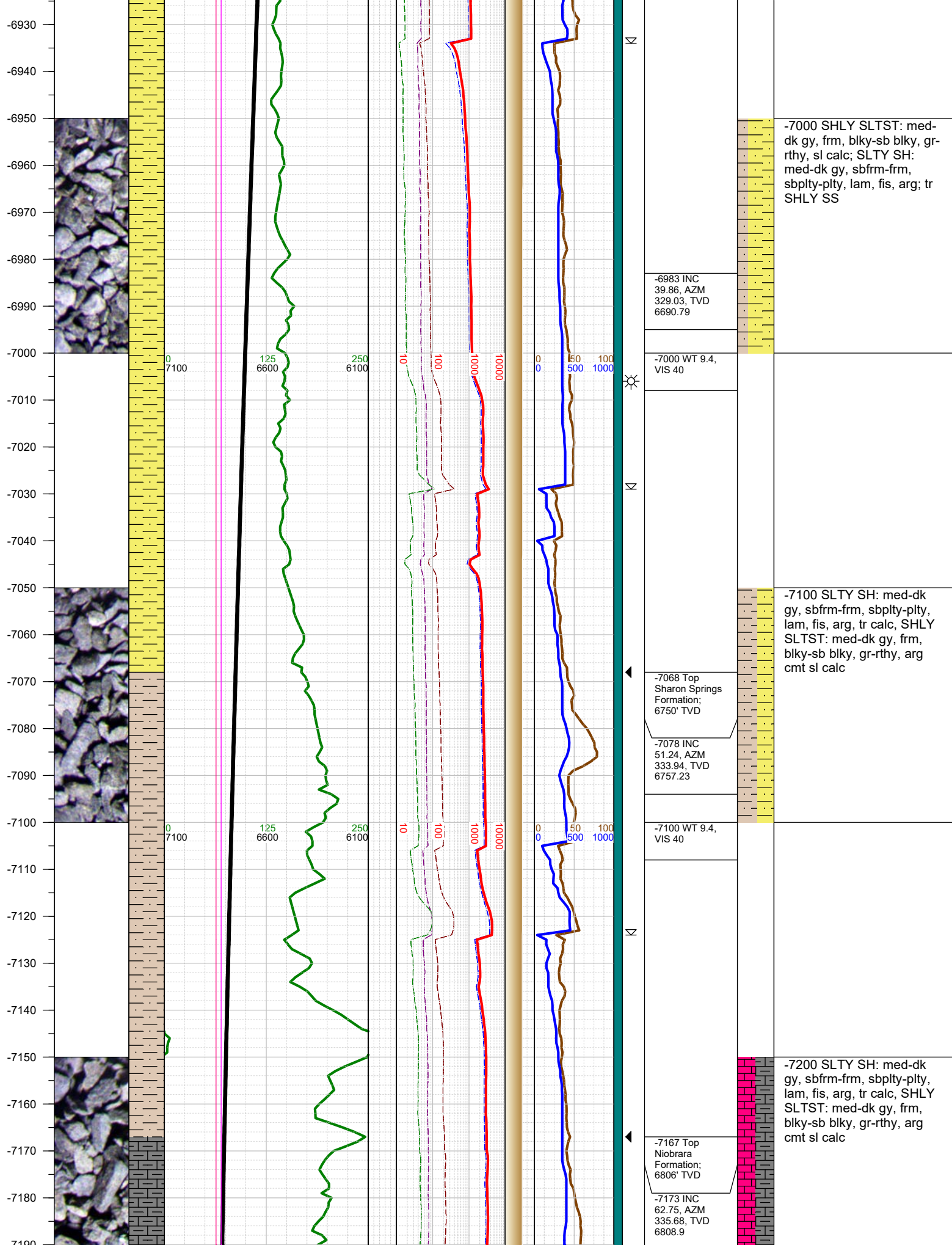
-6295 INC
17.96, AZM
264.23, TVD
6052.87

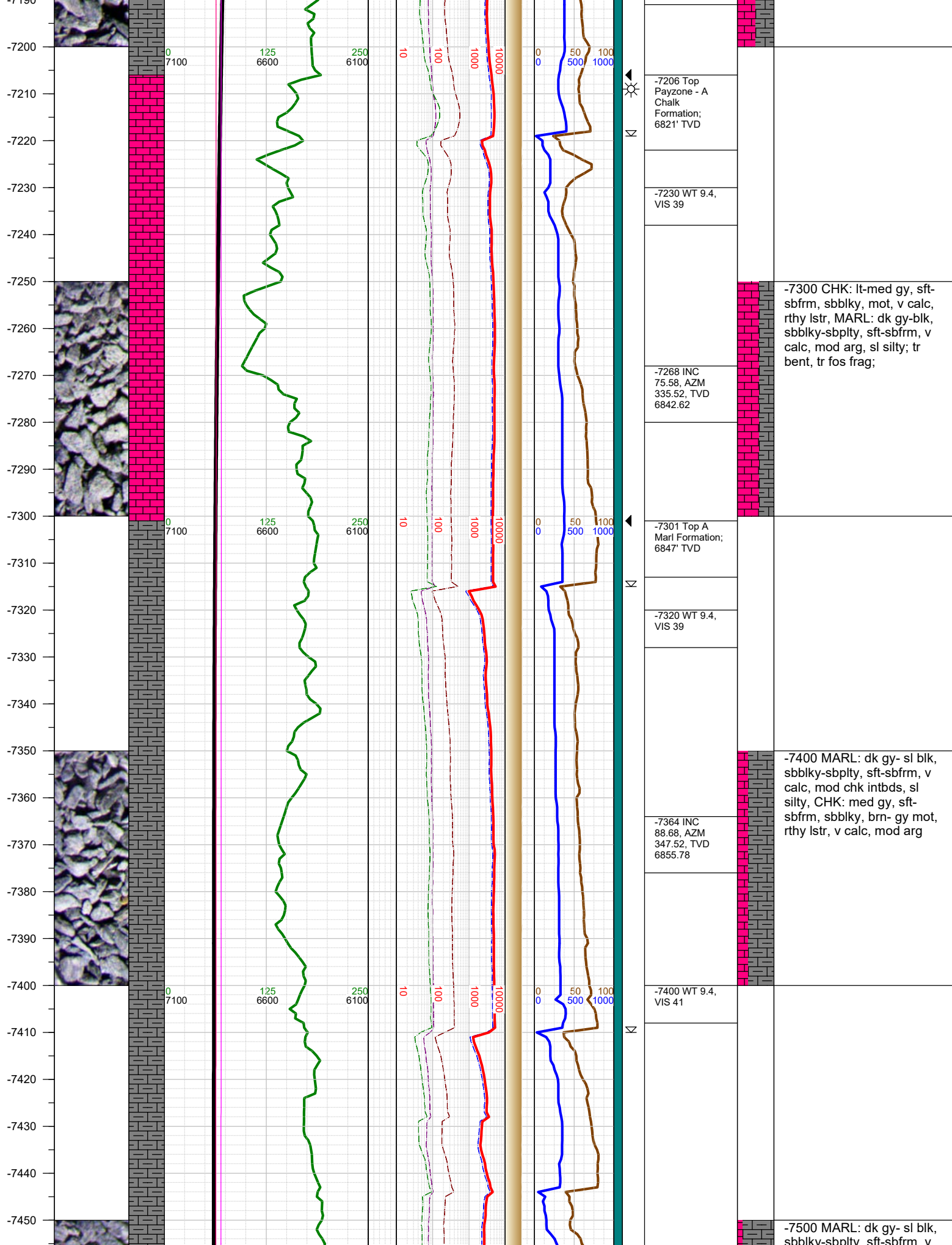
-6310 WT 9, VIS
42

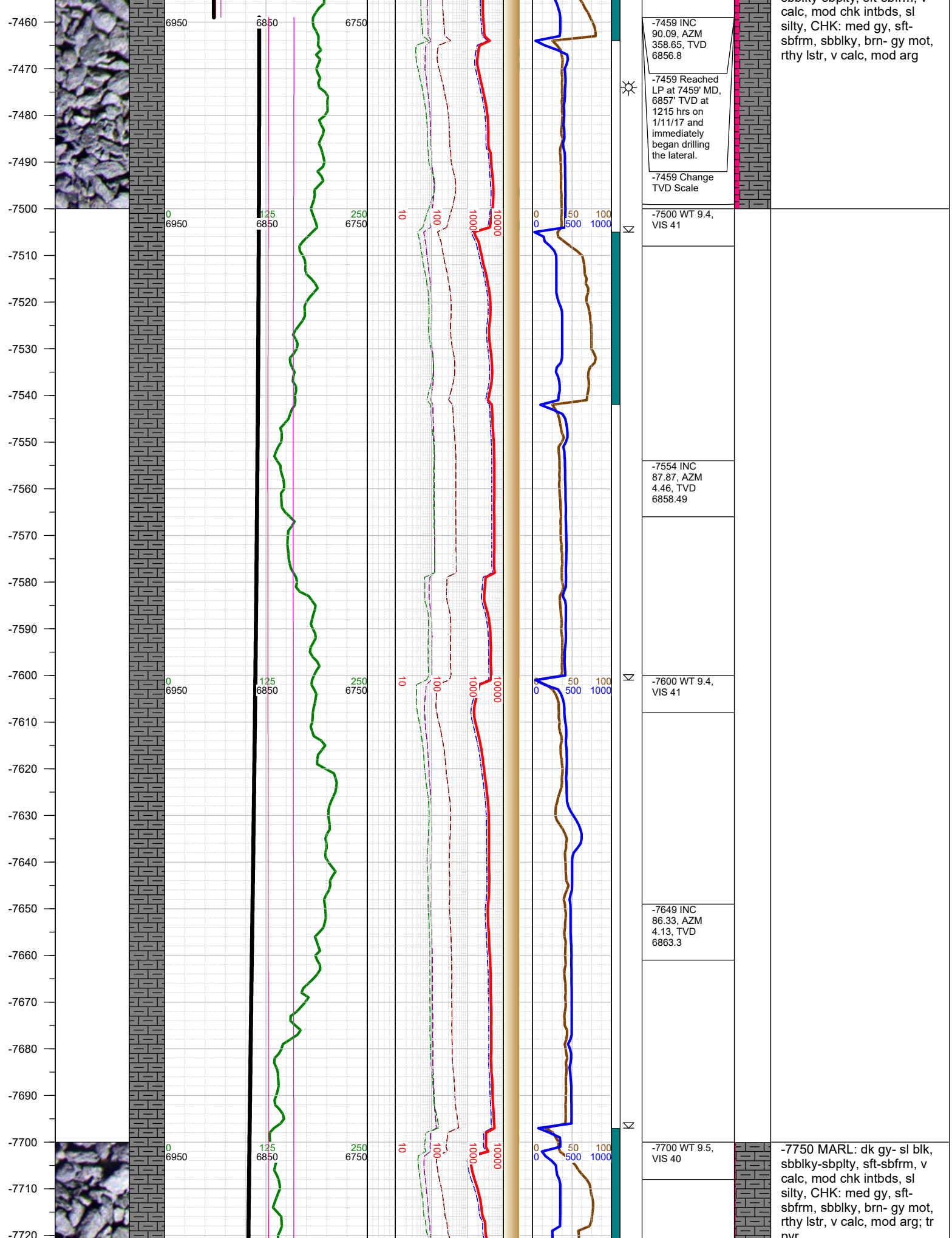
-6390 INC
17.47, AZM

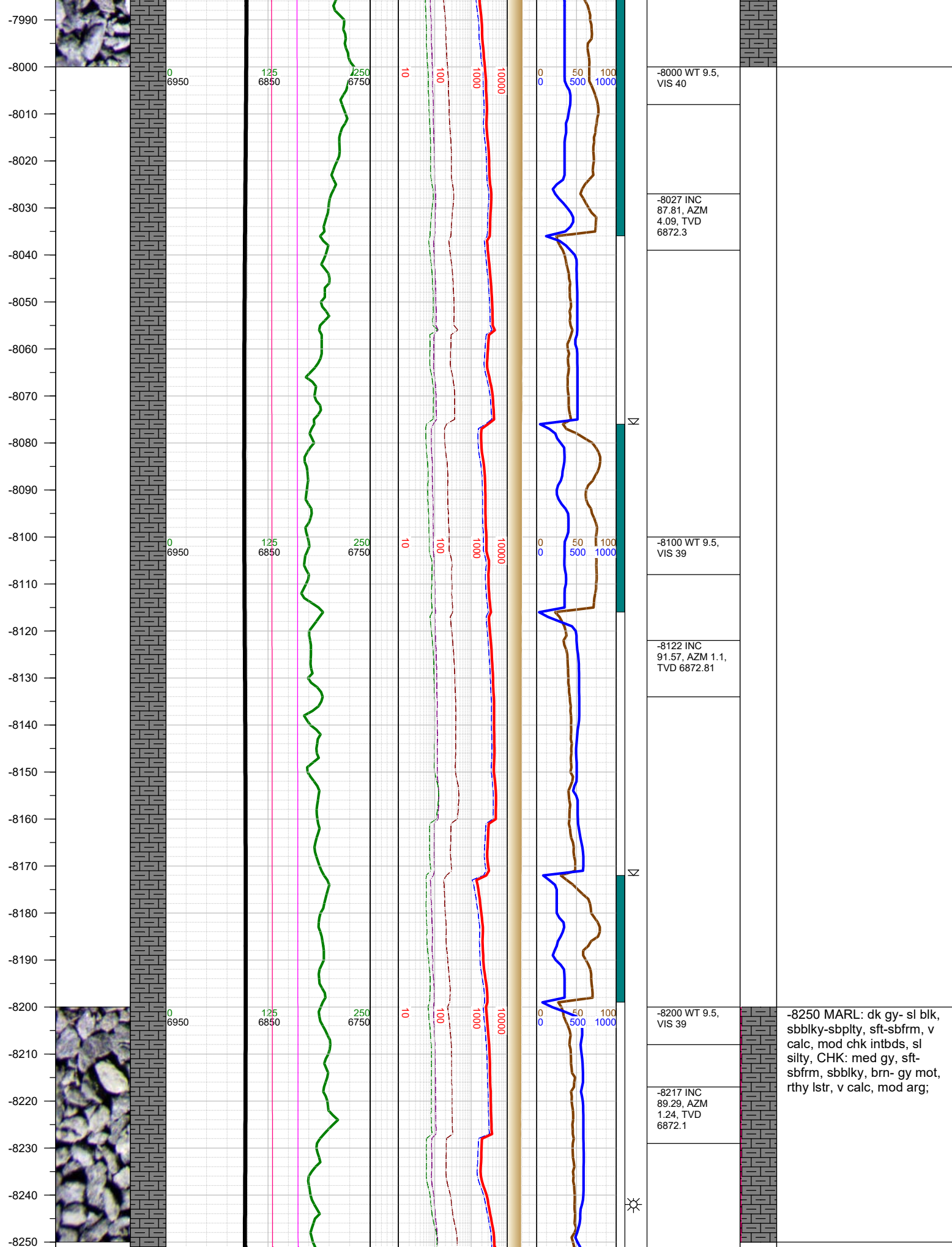


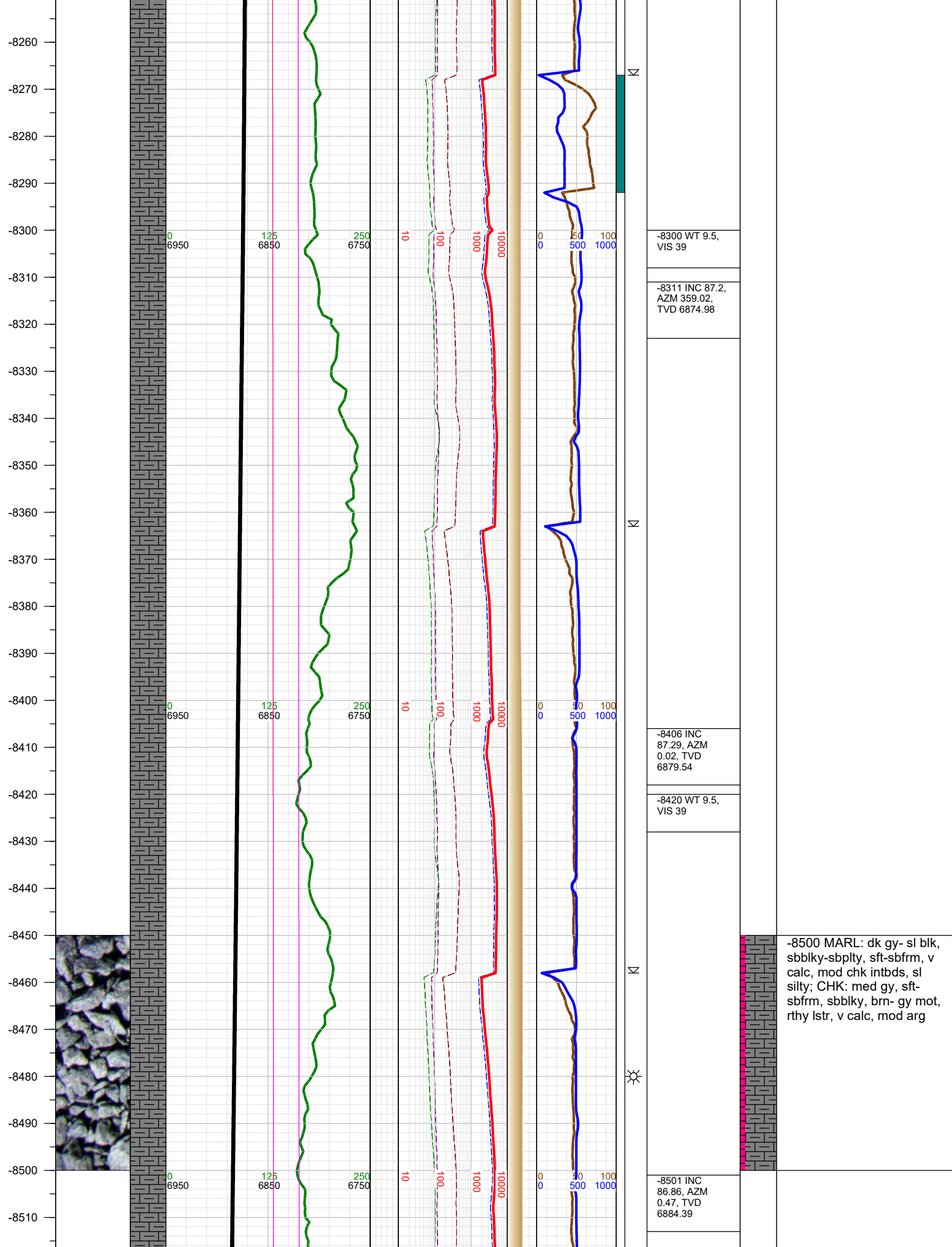




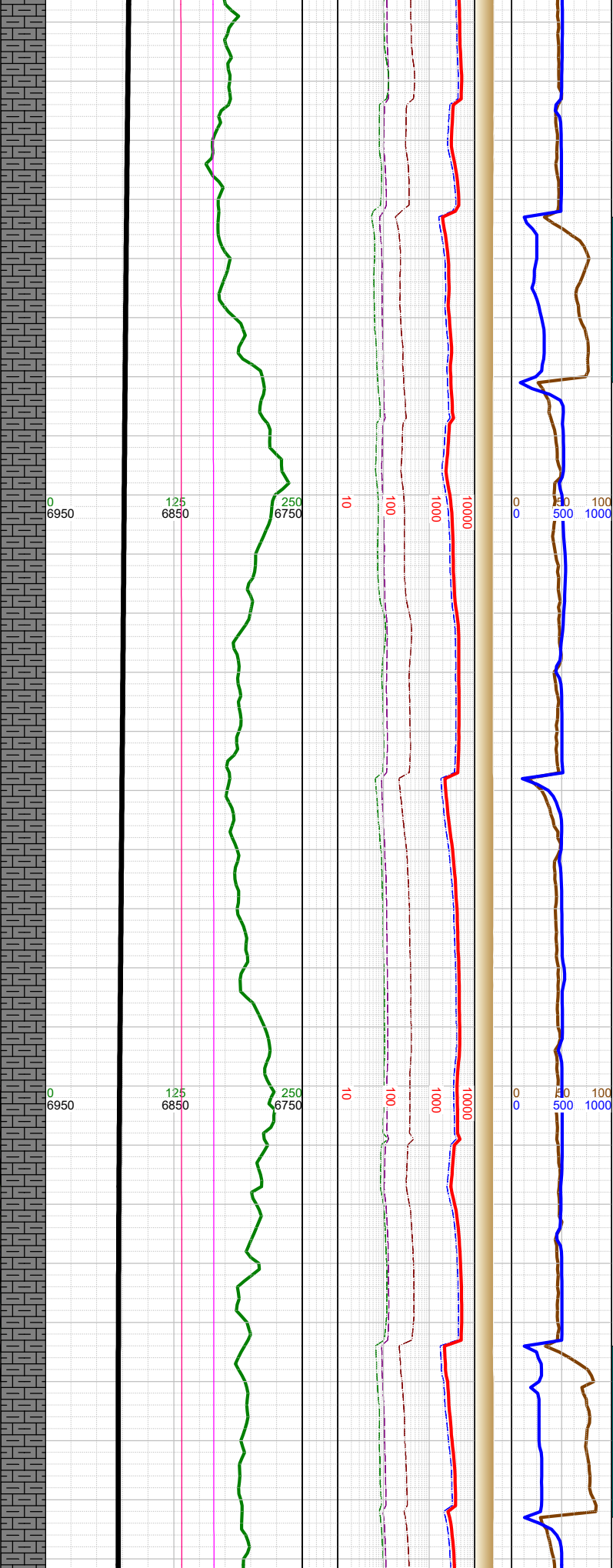




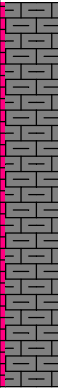




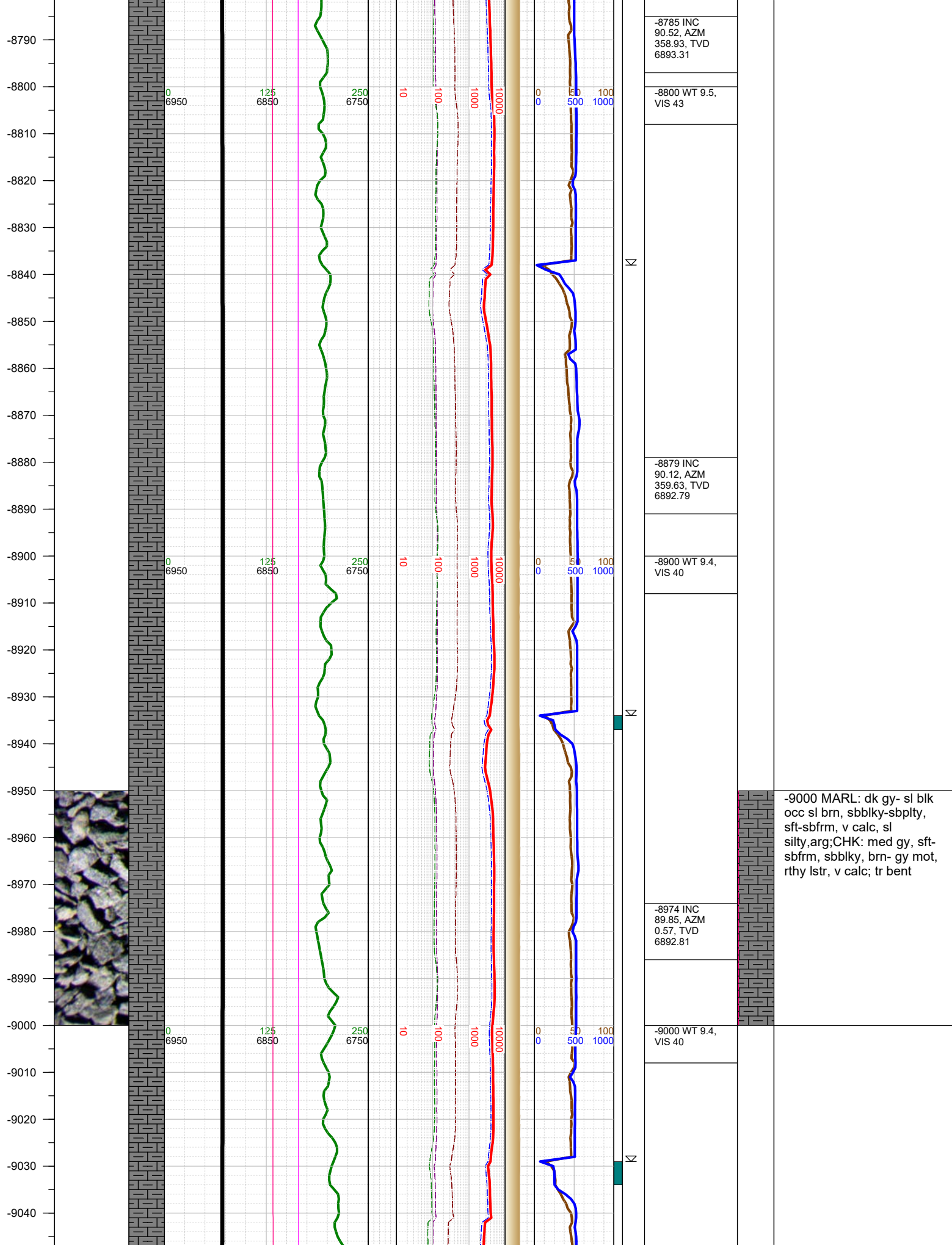
-8520
-8530
-8540
-8550
-8560
-8570
-8580
-8590
-8600
-8610
-8620
-8630
-8640
-8650
-8660
-8670
-8680
-8690
-8700
-8710
-8720
-8730
-8740
-8750
-8760
-8770
-8780



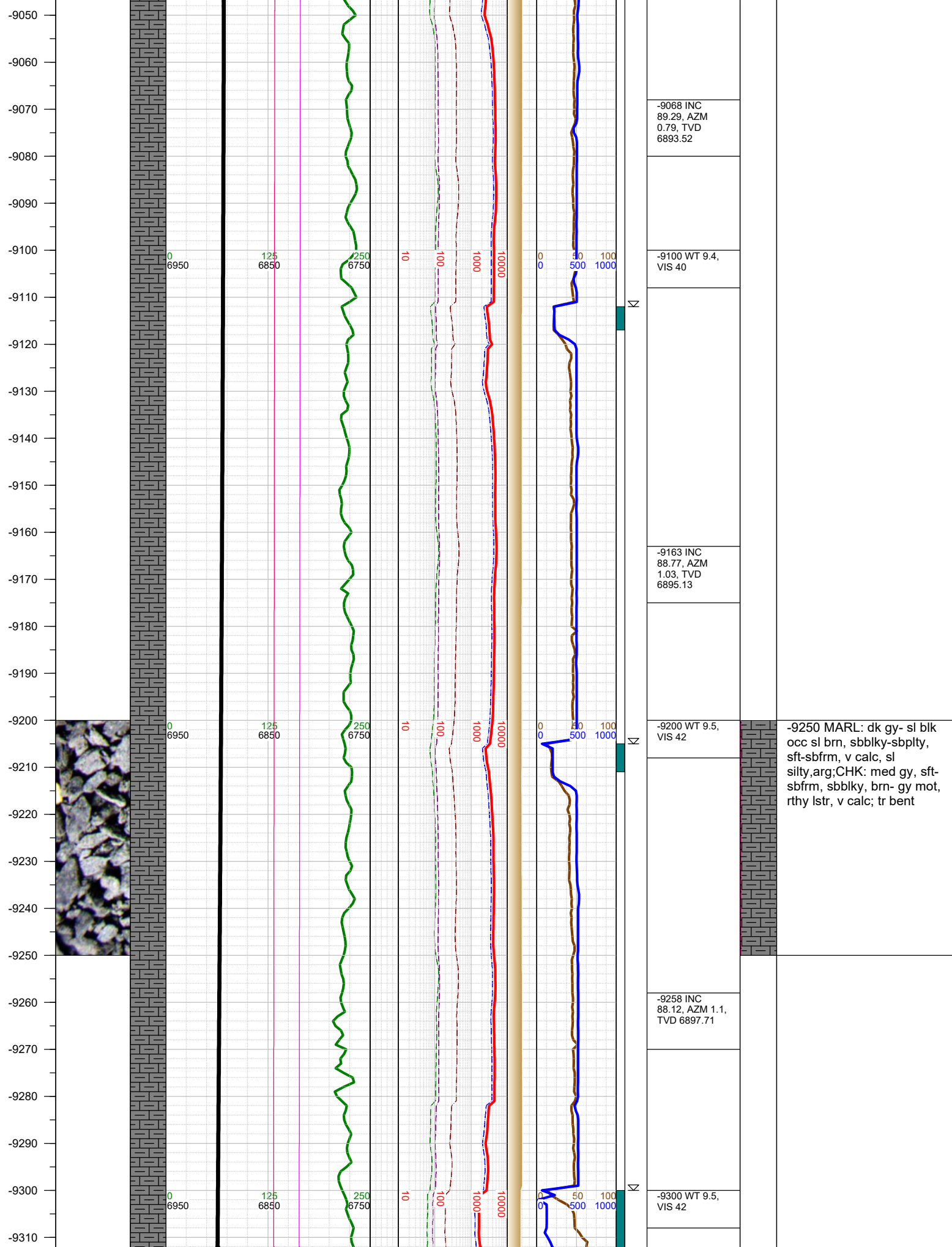
N	-8520 WT 9.5, VIS 43
N	-8595 INC 88.06, AZM 358.8, TVD 6888.56
N	-8610 WT 9.5, VIS 43
N	-8690 INC 87.84, AZM 359.59, TVD 6891.95
N	-8710 WT 9.5, VIS 43

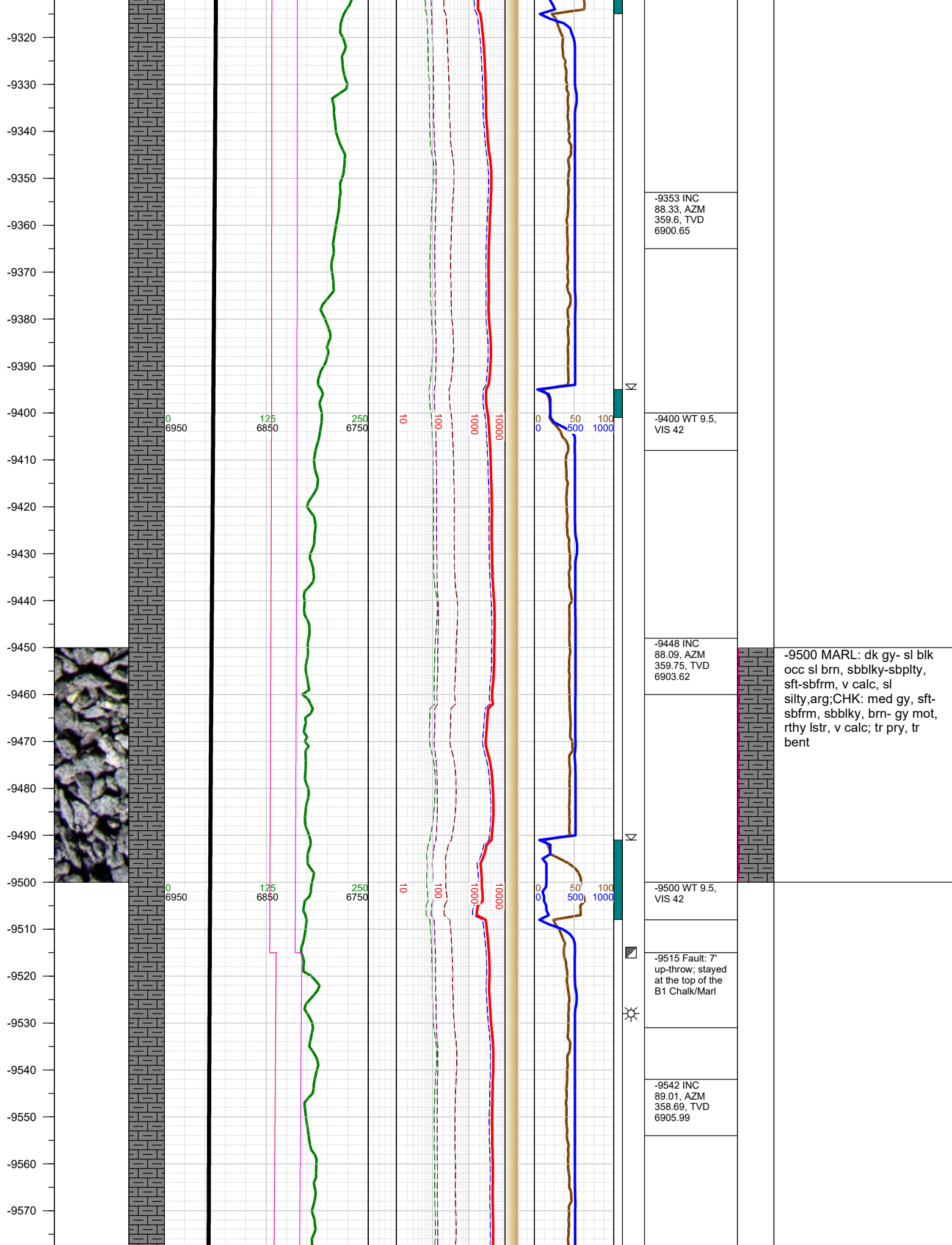


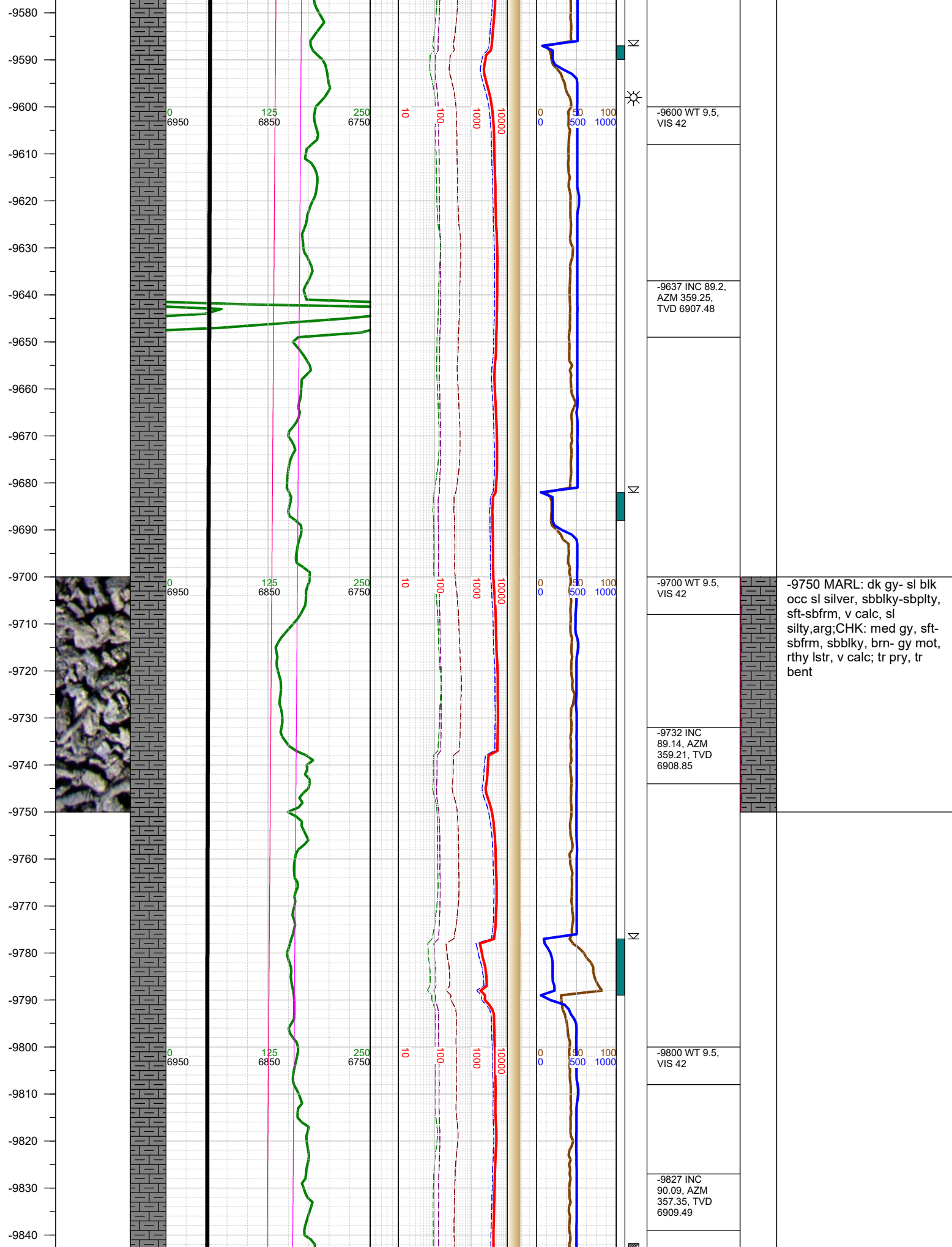
-8750 MARL: dk gy- sl blk,
sbbly-sbply, sft-sbfrm, v
calc, sl silty, arg; CHK:
med gy, sft-sbfrm, sbbly,
brn- gy mot, rthy lstr, v calc

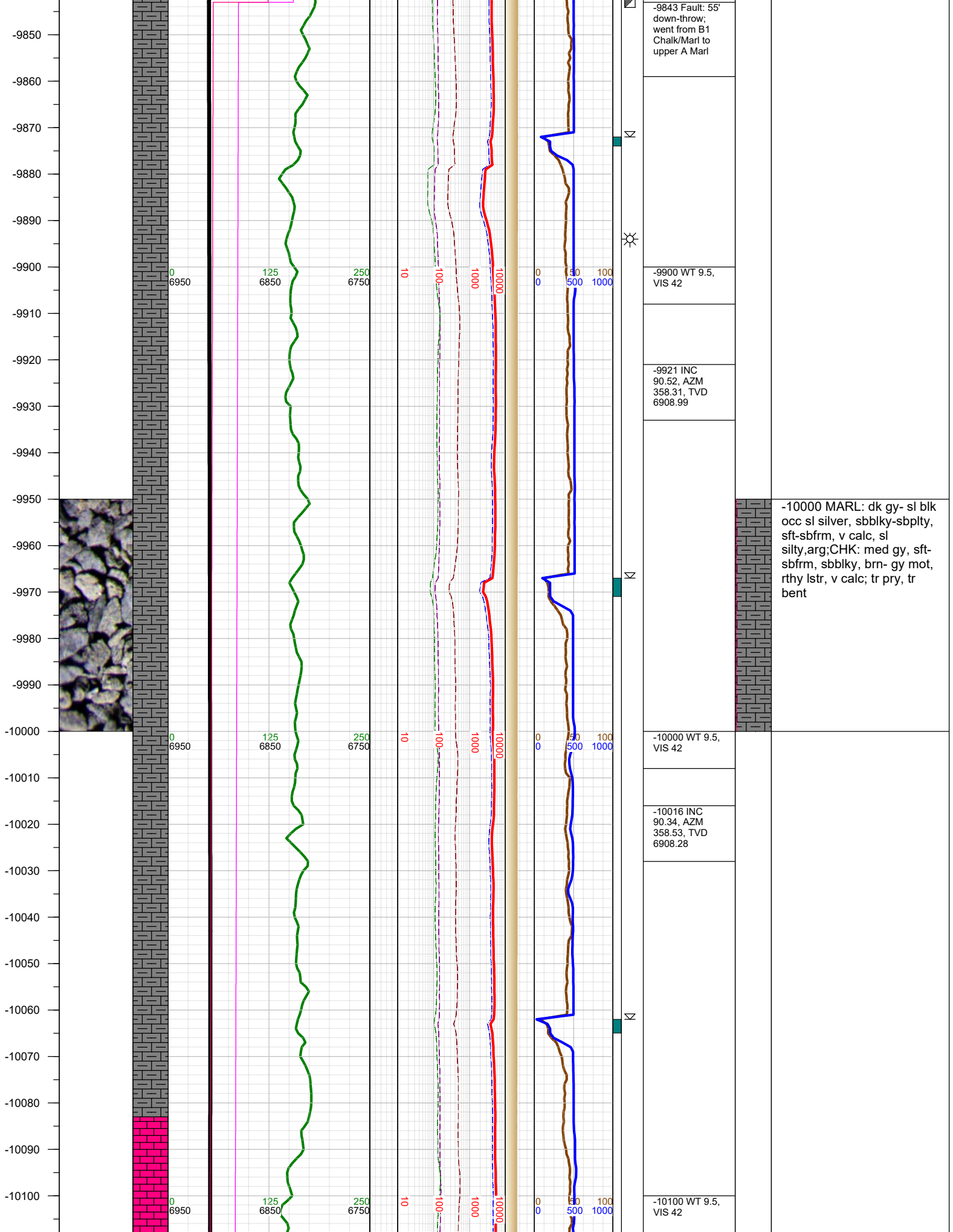


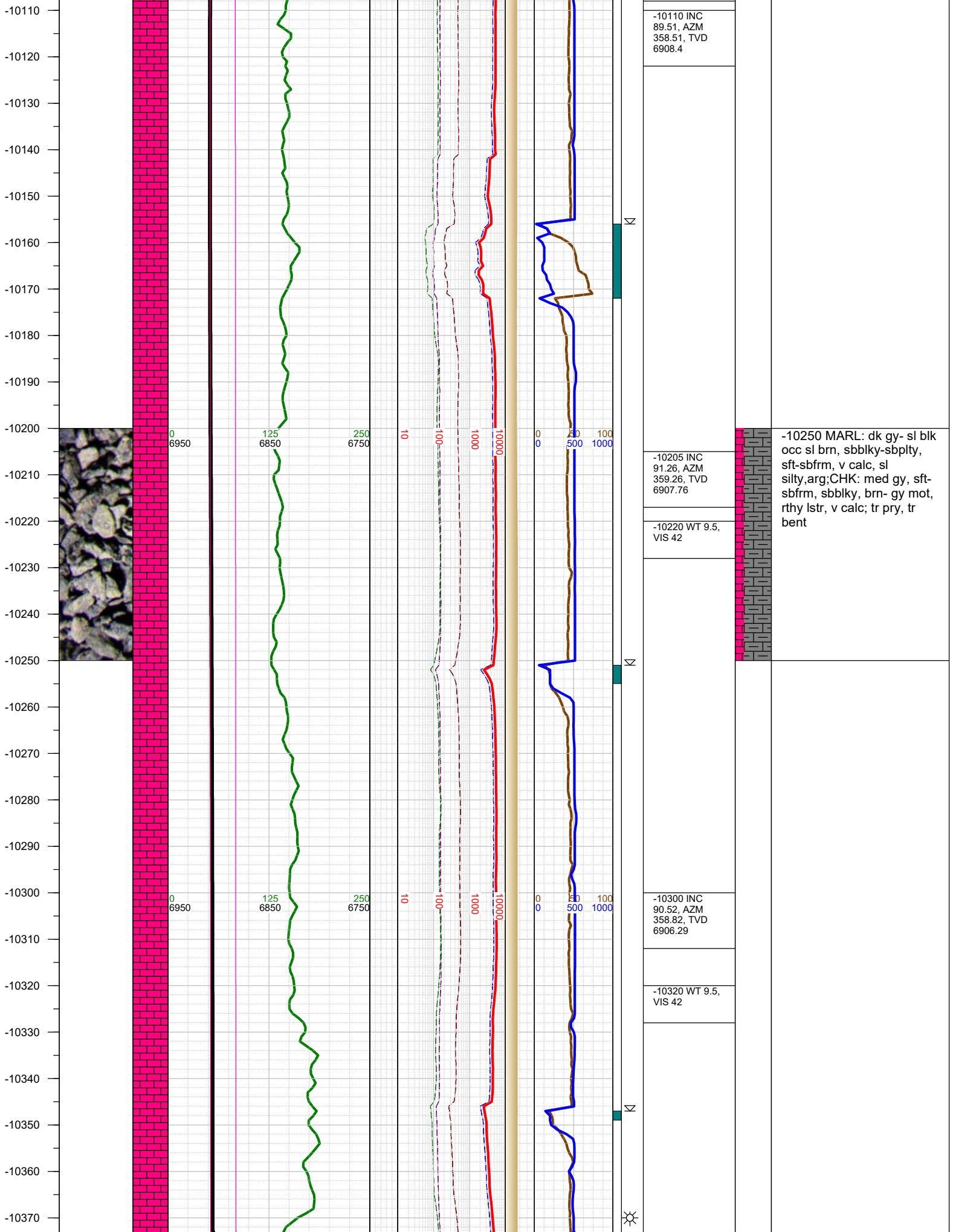
-9000 MARL: dk gy- sl blk
occ sl brn, sbblky-sbply,
sft-sbfrm, v calc, sl
silty,arg;CHK: med gy, sft-
sbfrm, sbblky, brn- gy mot,
rthy lstr, v calc; tr bent



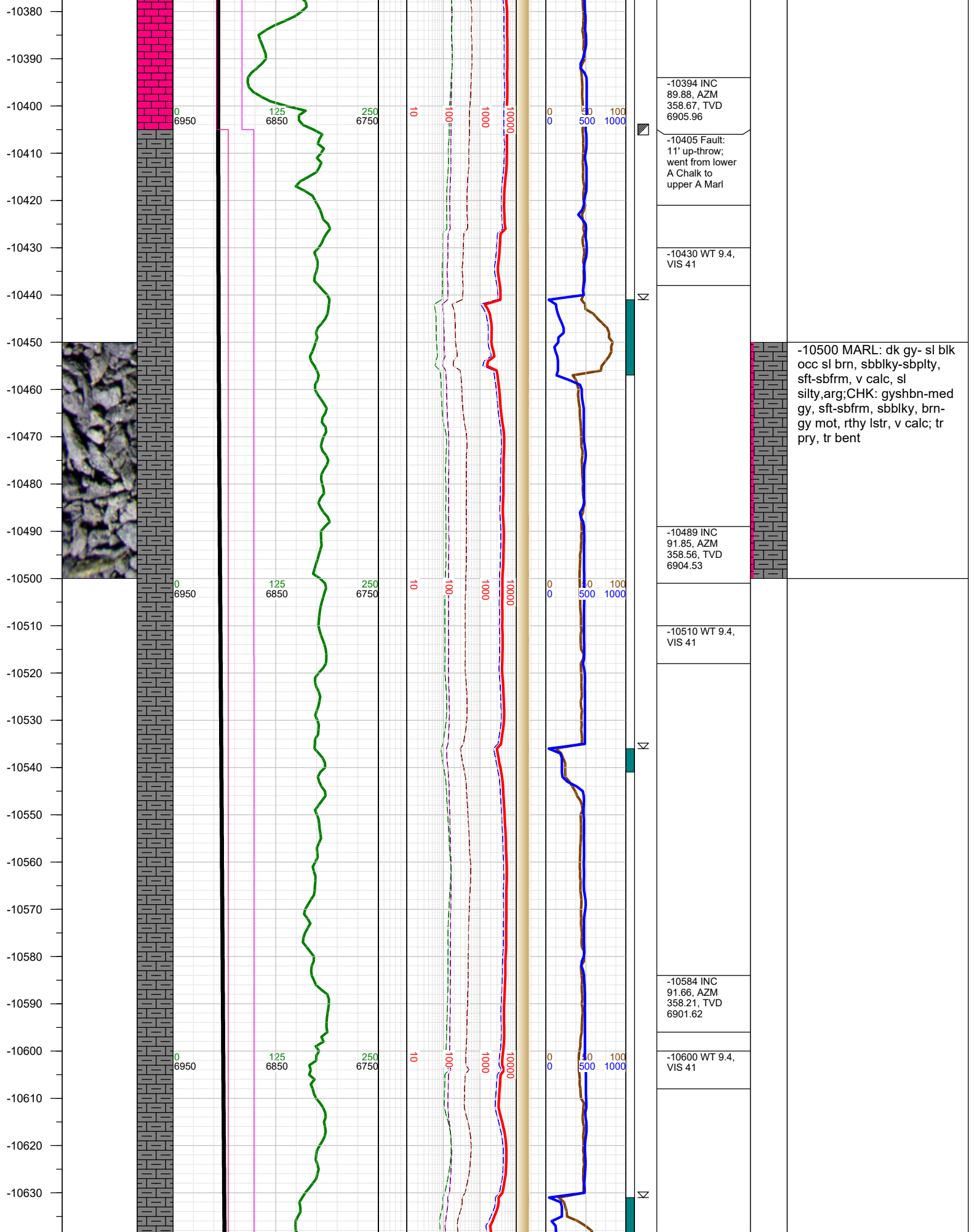


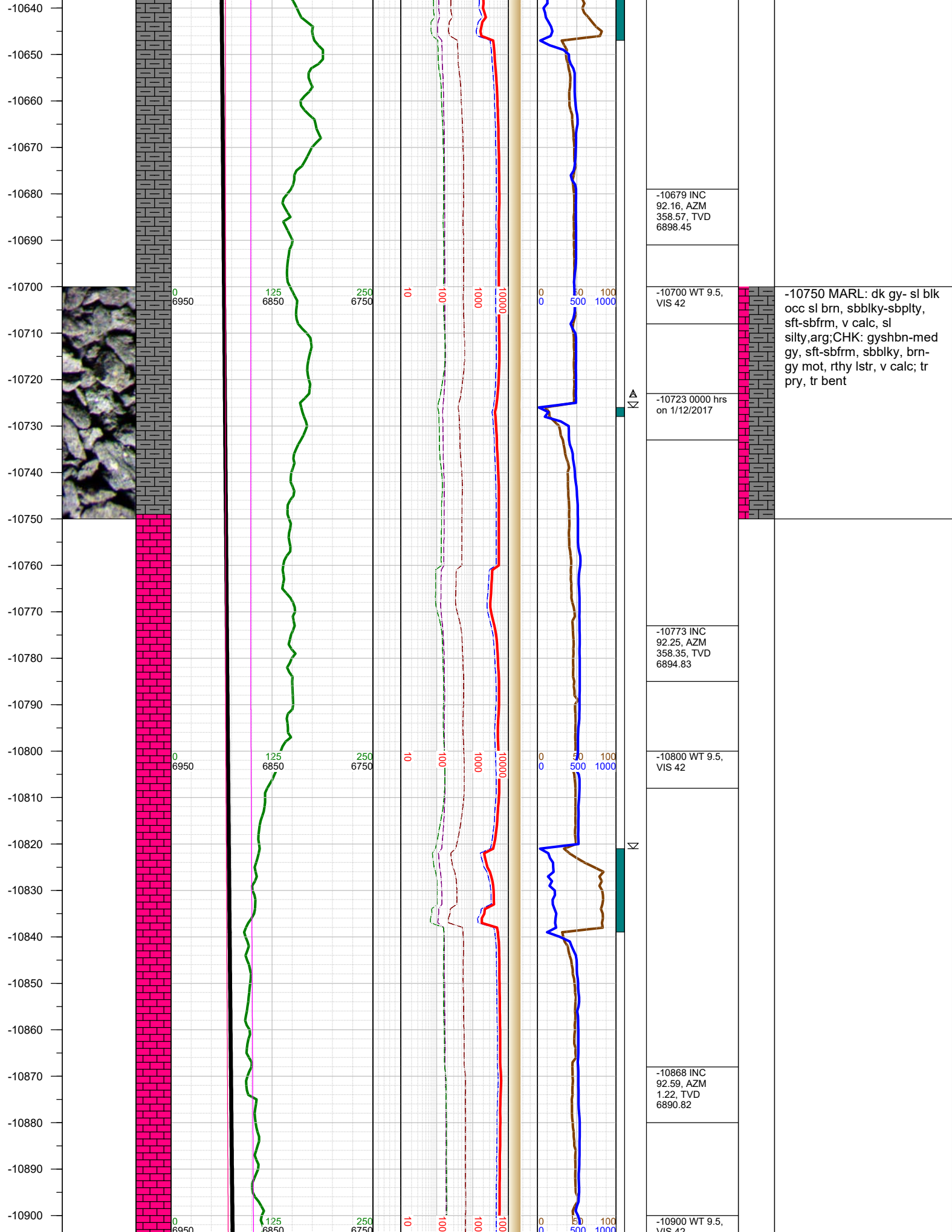




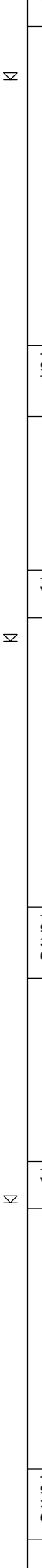
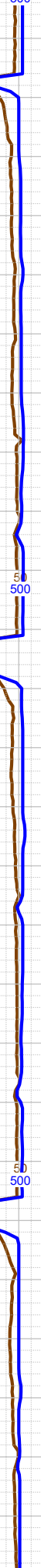
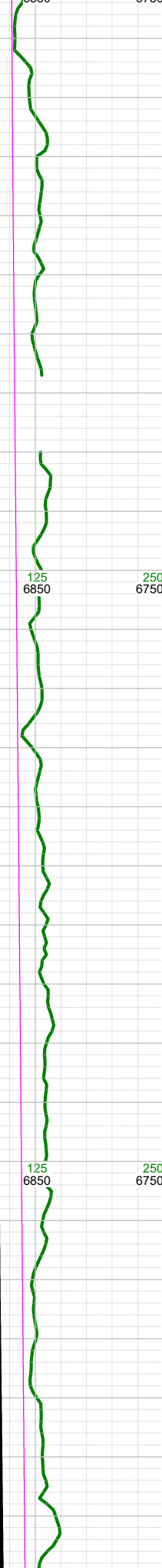
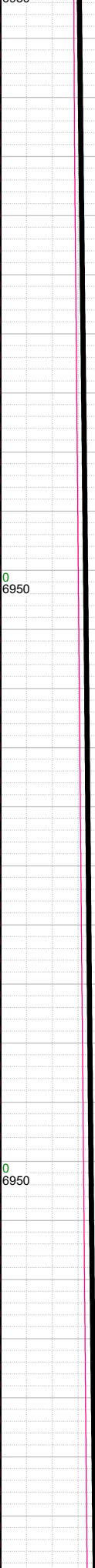
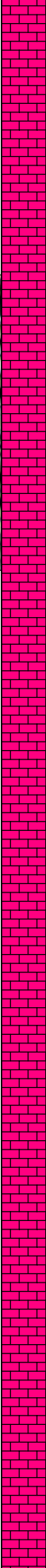
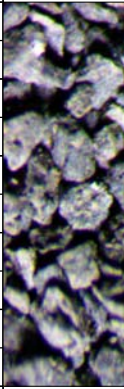


-10250 MARL: dk gy- sl blk
occ sl brn, sbbiky-sbply,
sft-sbfrm, v calc, sl
silty,arg;CHK: med gy, sft-
sbfrm, sbbiky, brn- gy mot,
rthy lstr, v calc; tr pry, tr
bent





-10910
-10920
-10930
-10940
-10950
-10960
-10970
-10980
-10990
-11000
-11010
-11020
-11030
-11040
-11050
-11060
-11070
-11080
-11090
-11100
-11110
-11120
-11130
-11140
-11150
-11160



Σ

Σ

Σ

-10962 INC
92.96, AZM 0.5,
TVD 6886.27

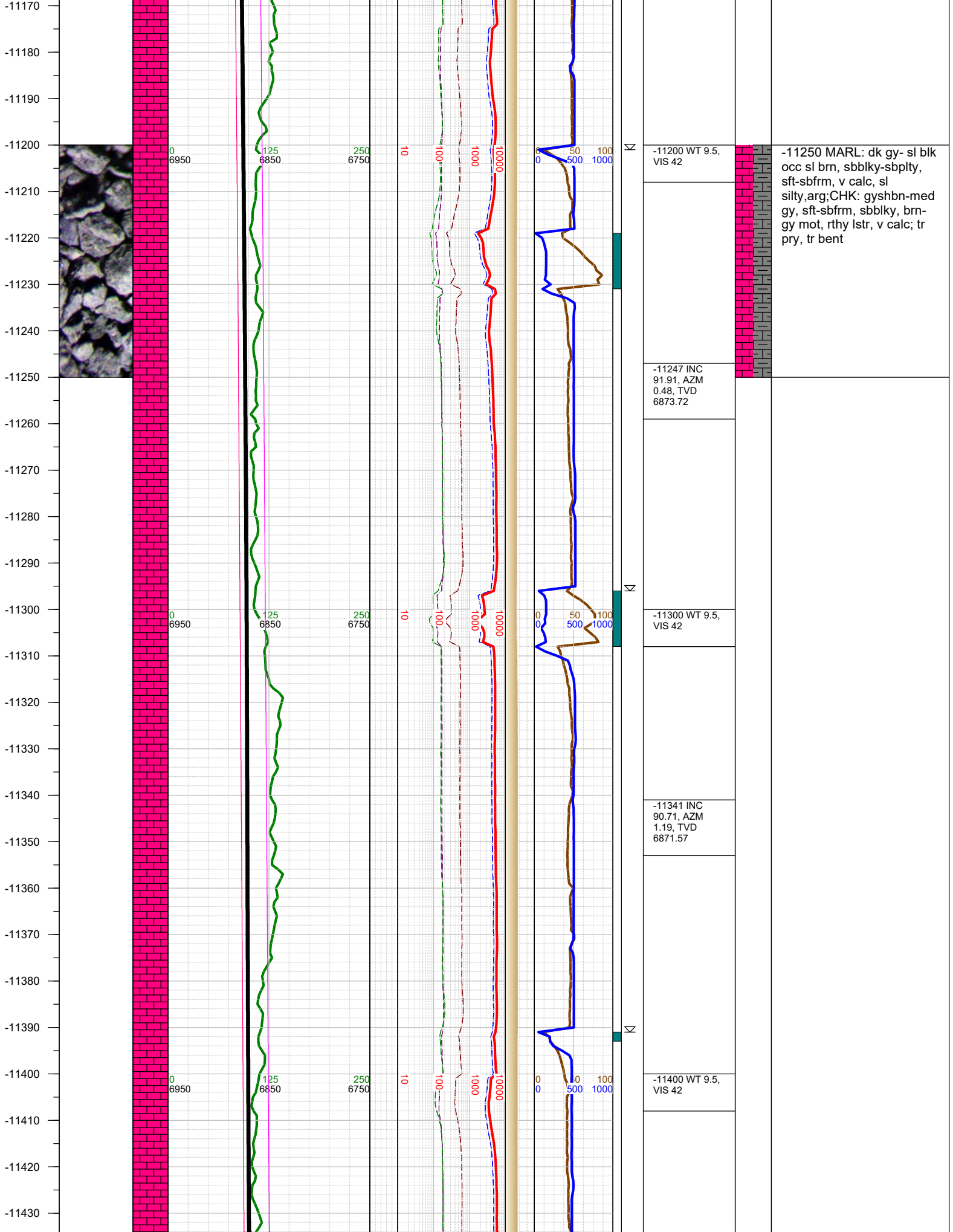
-11000 WT 9.5,
VIS 42

-11057 INC
92.25, AZM
359.88, TVD
6881.95

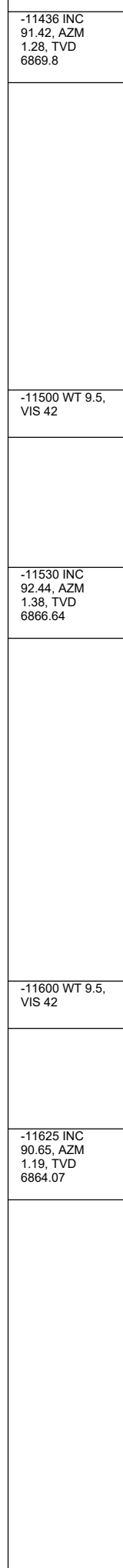
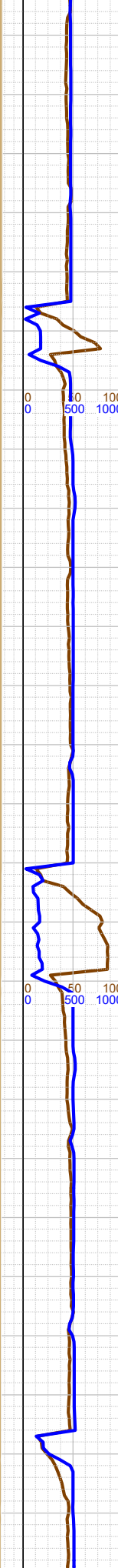
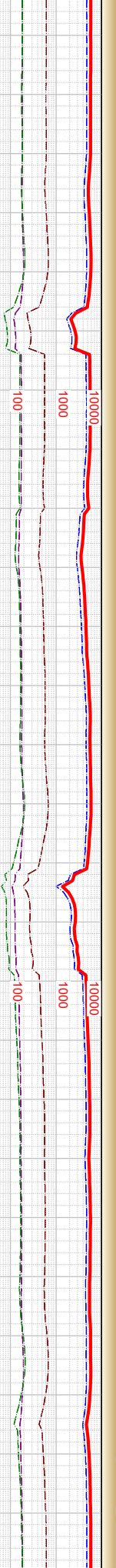
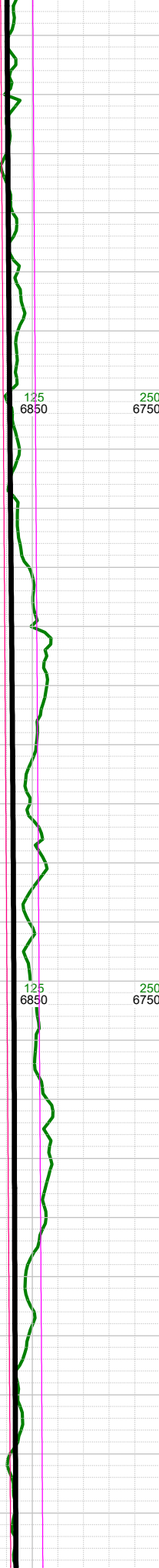
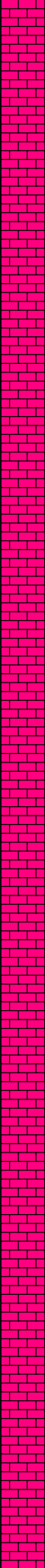
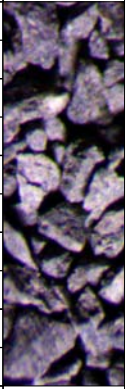
-11100 WT 9.5,
VIS 42

-11152 INC
92.89, AZM
359.86, TVD
6877.69

-11000 MARL: dk gy- sl blk
occ sl brn, sbblky-sbply,
sft-sbfrm, v calc, sl
silty,arg;CHK: gyshbn-med
gy, sft-sbfrm, sbblky, brn-
gy mot, rthy lstr, v calc; tr
pry, tr bent



-11440
-11450
-11460
-11470
-11480
-11490
-11500
-11510
-11520
-11530
-11540
-11550
-11560
-11570
-11580
-11590
-11600
-11610
-11620
-11630
-11640
-11650
-11660
-11670
-11680
-11690



-11436 INC
91.42, AZM
1.28, TVD
6869.8

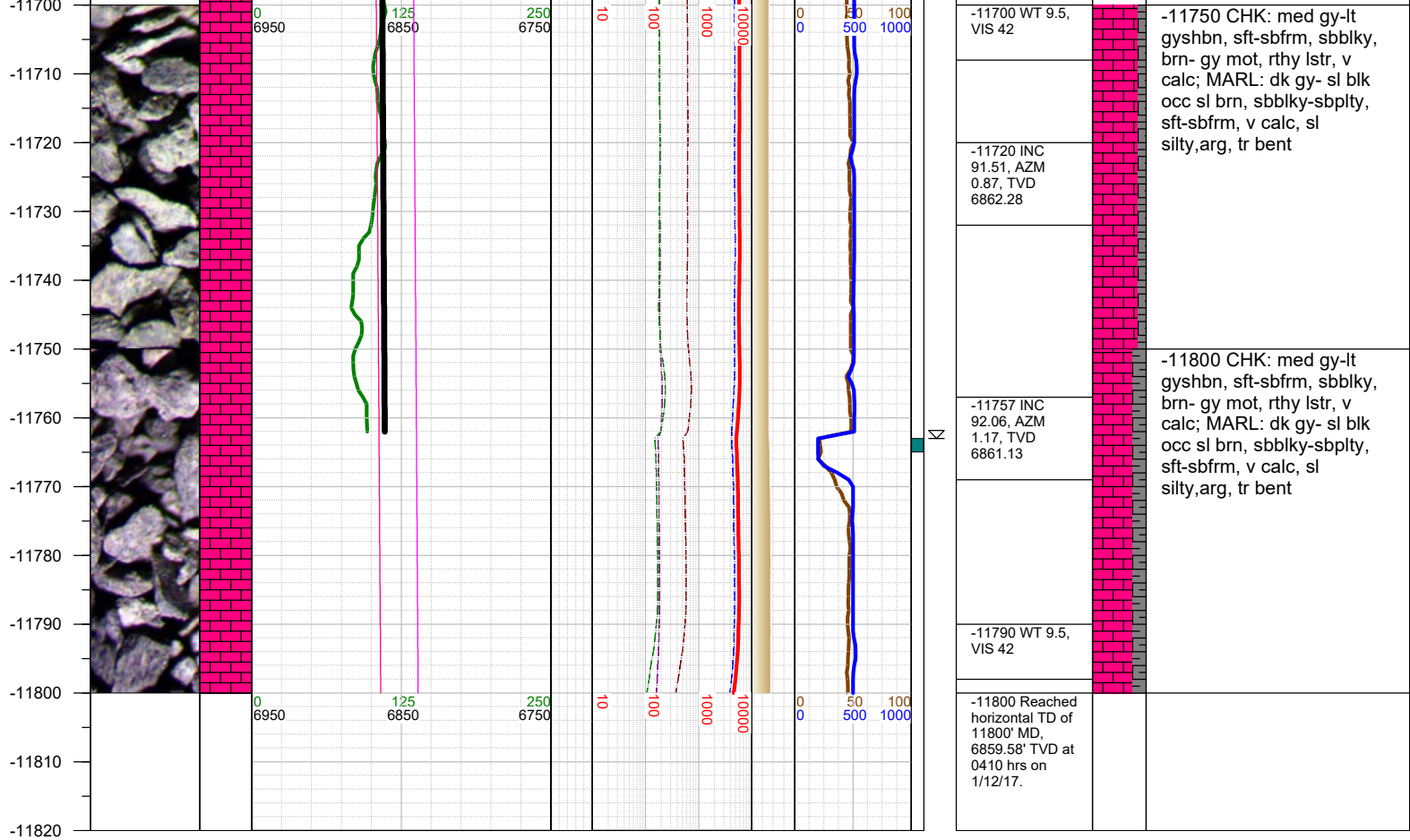
-11500 WT 9.5,
VIS 42

-11530 INC
92.44, AZM
1.38, TVD
6866.64

-11600 WT 9.5,
VIS 42

-11625 INC
90.65, AZM
1.19, TVD
6864.07

-11500 MARL: dk gy- sl blk
occ sl brn, sbbkly-sbplty,
sft-sbfrm, v calc, sl
silty,arg;CHK: gyshbn-med
gy, sft-sbfrm, sbbkly, brn-
gy mot, rthy lstr, v calc; tr
pry, tr bent



TOTAL DEPTH = 11800'

Thank you for using Earth Science Agency