

OPERATOR: **Extraction Oil & Gas**

WELL NAME: **Matrix A-29HN**

FIELD NAME: DJ Basin - Wattenberg

DRILLING RIG: H&P 321

API #: 05-123-40692

LAT/LONG: 40.452602, -104.688464

SURFACE HOLE: SESW S29-T6N-R65W, 427' FSL, 2297' FWL

BOTTOM HOLE: S29-T6N-R65W, 465' FNL, 140' FWL

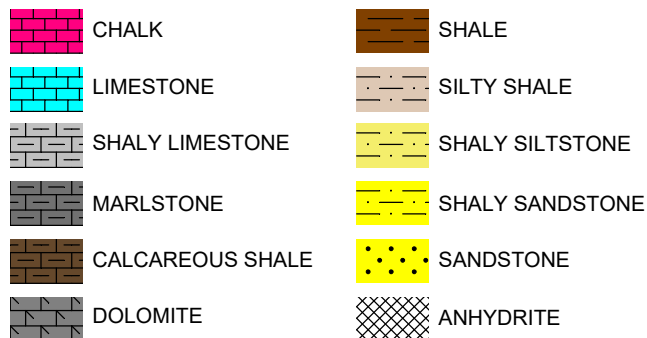


Earth Science Agency, LLC

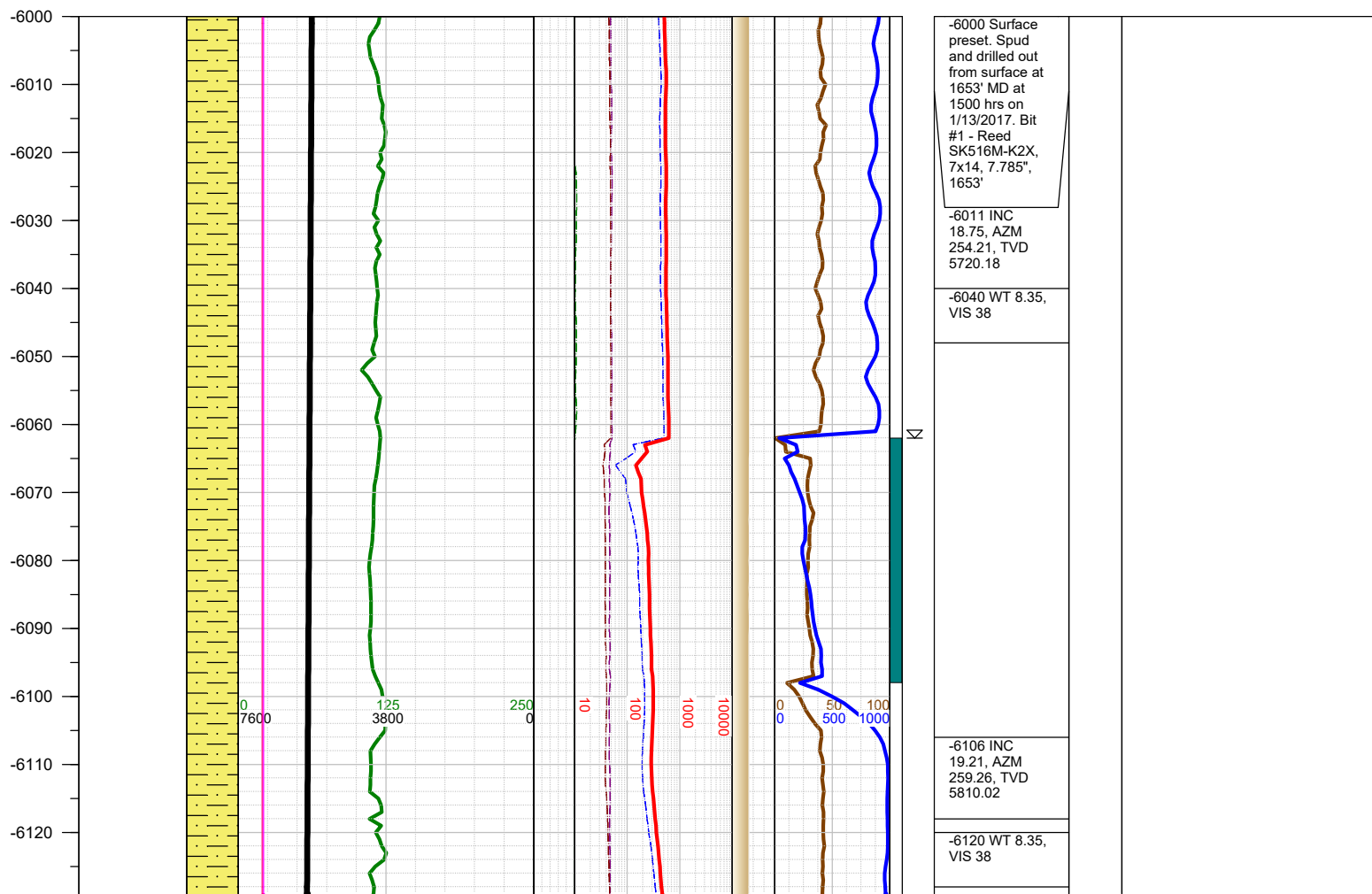
COUNTY: Weld
STATE: Colorado
GROUND ELEVATION: 4708'
KELLY BUSHING: 4738'
DRILLING FLUID: OBM
TVD VS. MD: 6993' / 11945'
SPUD DATE: January 13, 2017
TD DATE: January 15, 2017

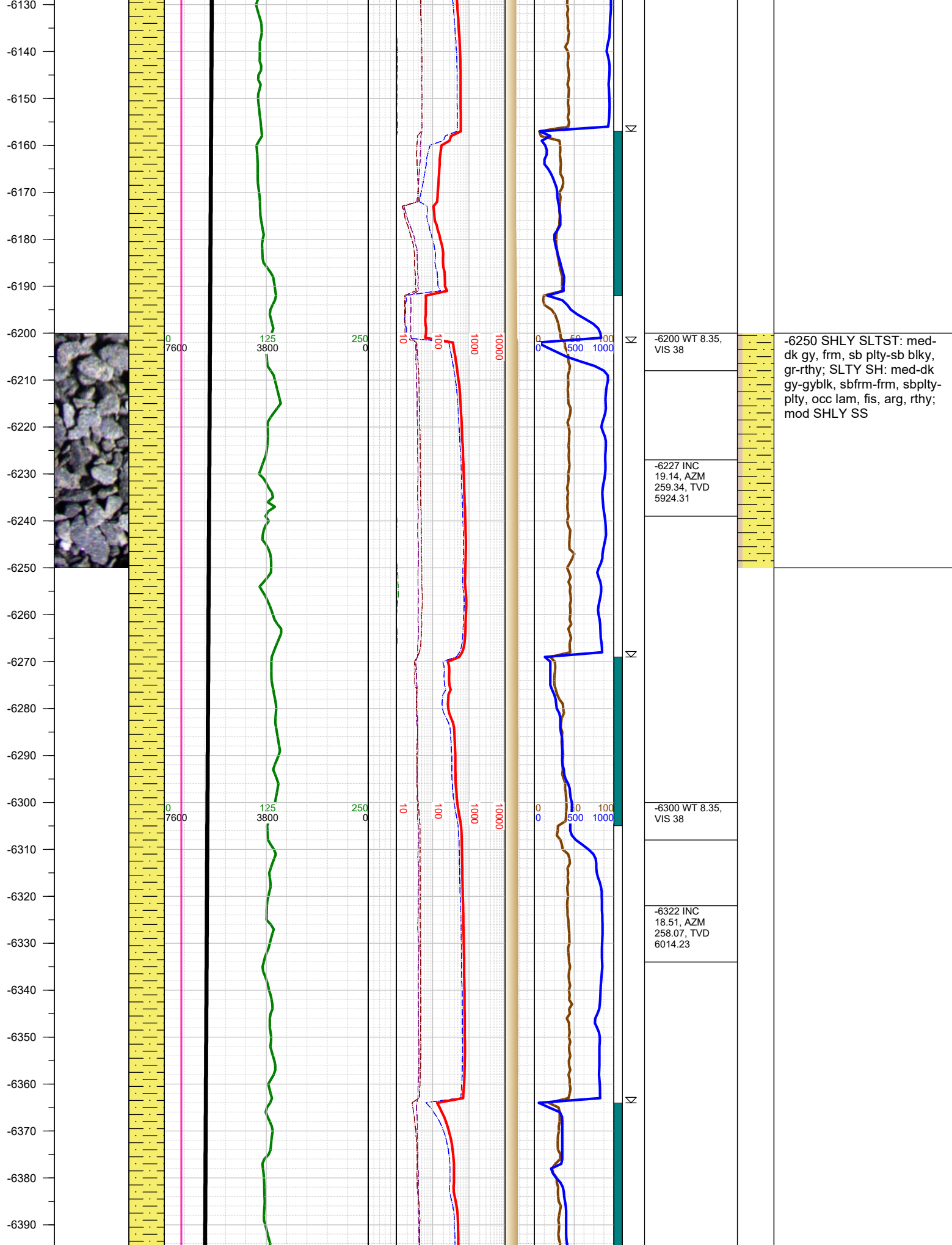
DEPTHS LOGGED: 6000' - 11945'
DATES LOGGED: January 14, 2017 - January 15, 2017
GEOLOGISTS: Ryan Gall, Brad Wilson
SCALE: 5" = 100'

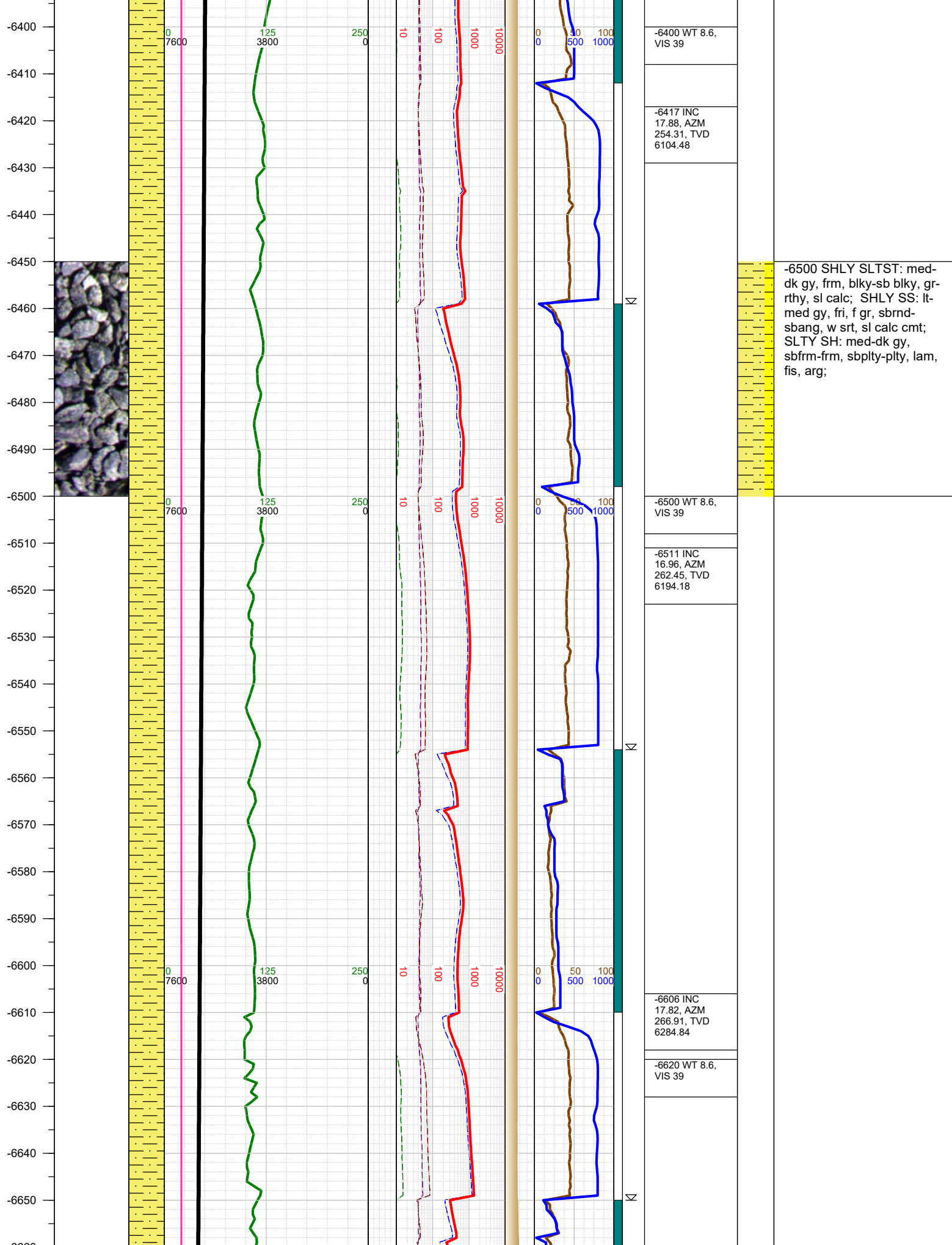
LEGEND

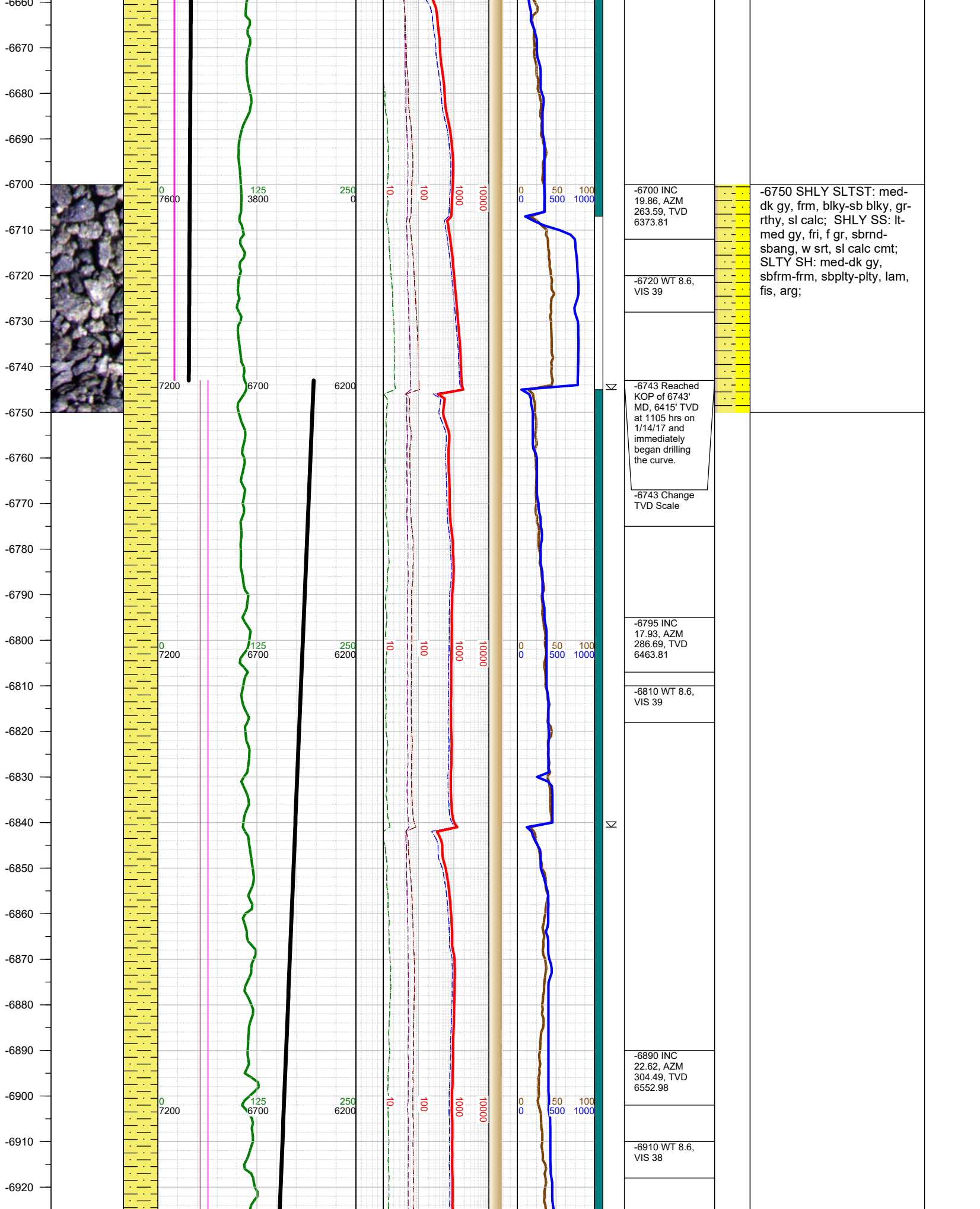


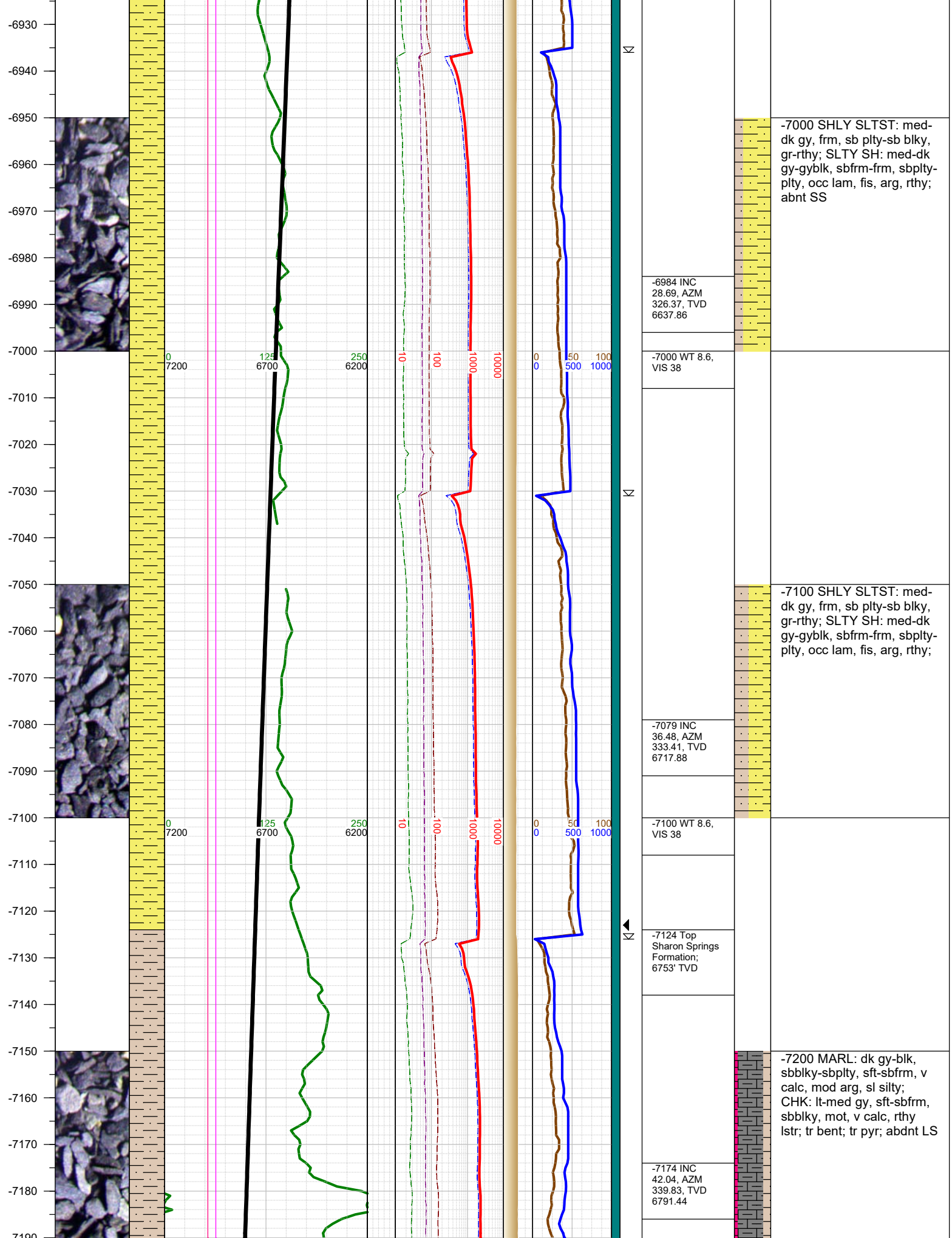
FORMATION \approx CONNECTION Δ MIDNIGHT NEW BIT GAS SHOW FAULT

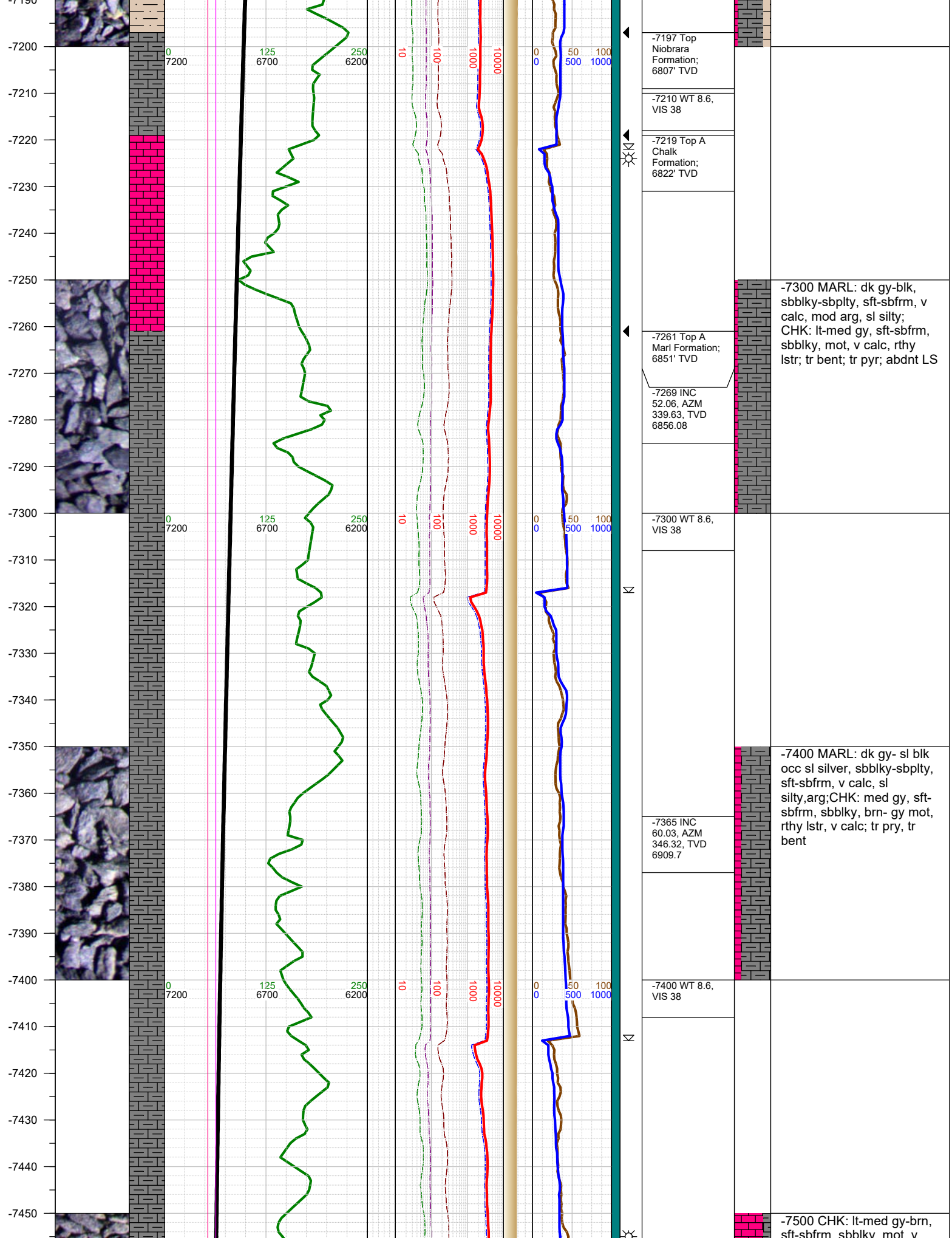


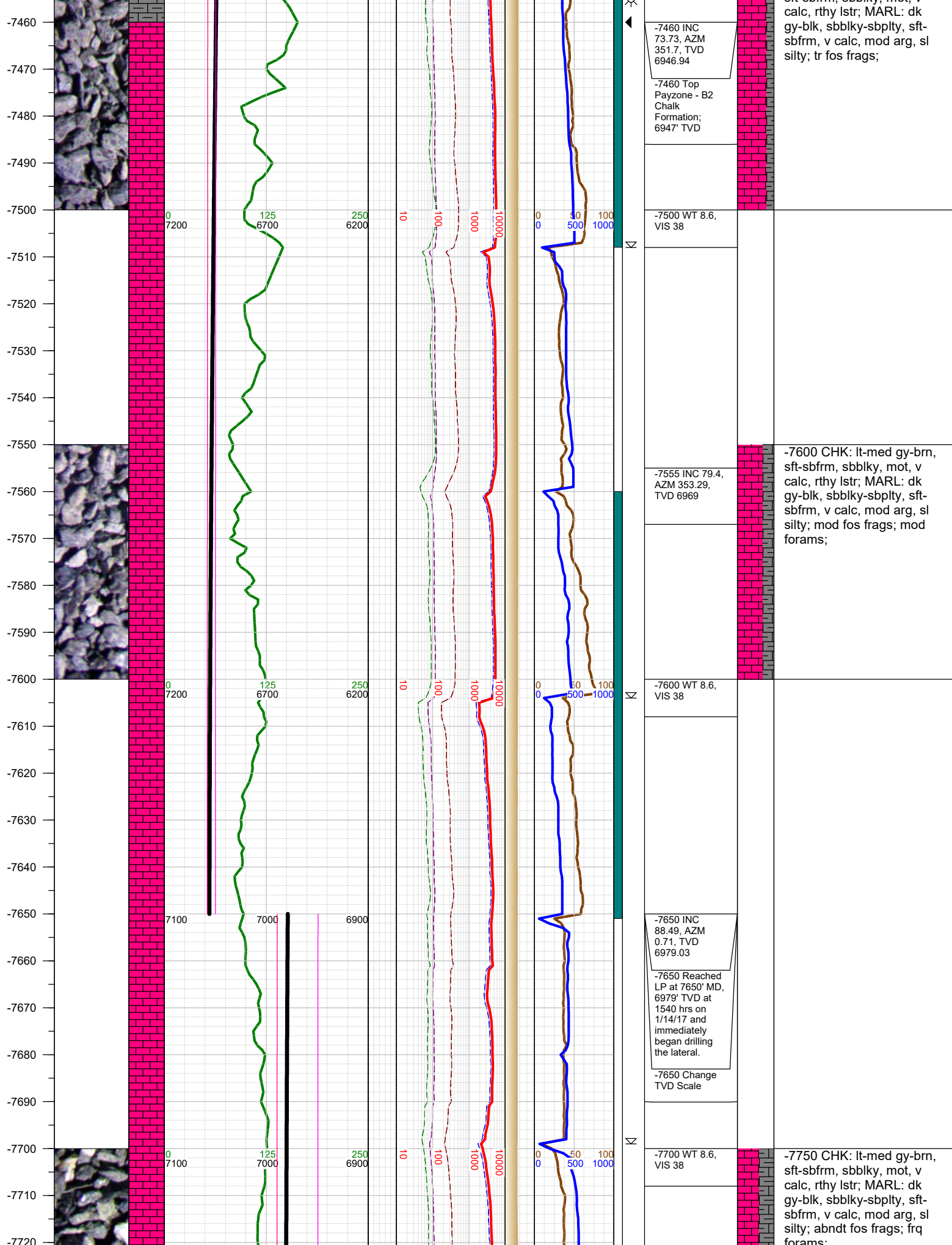


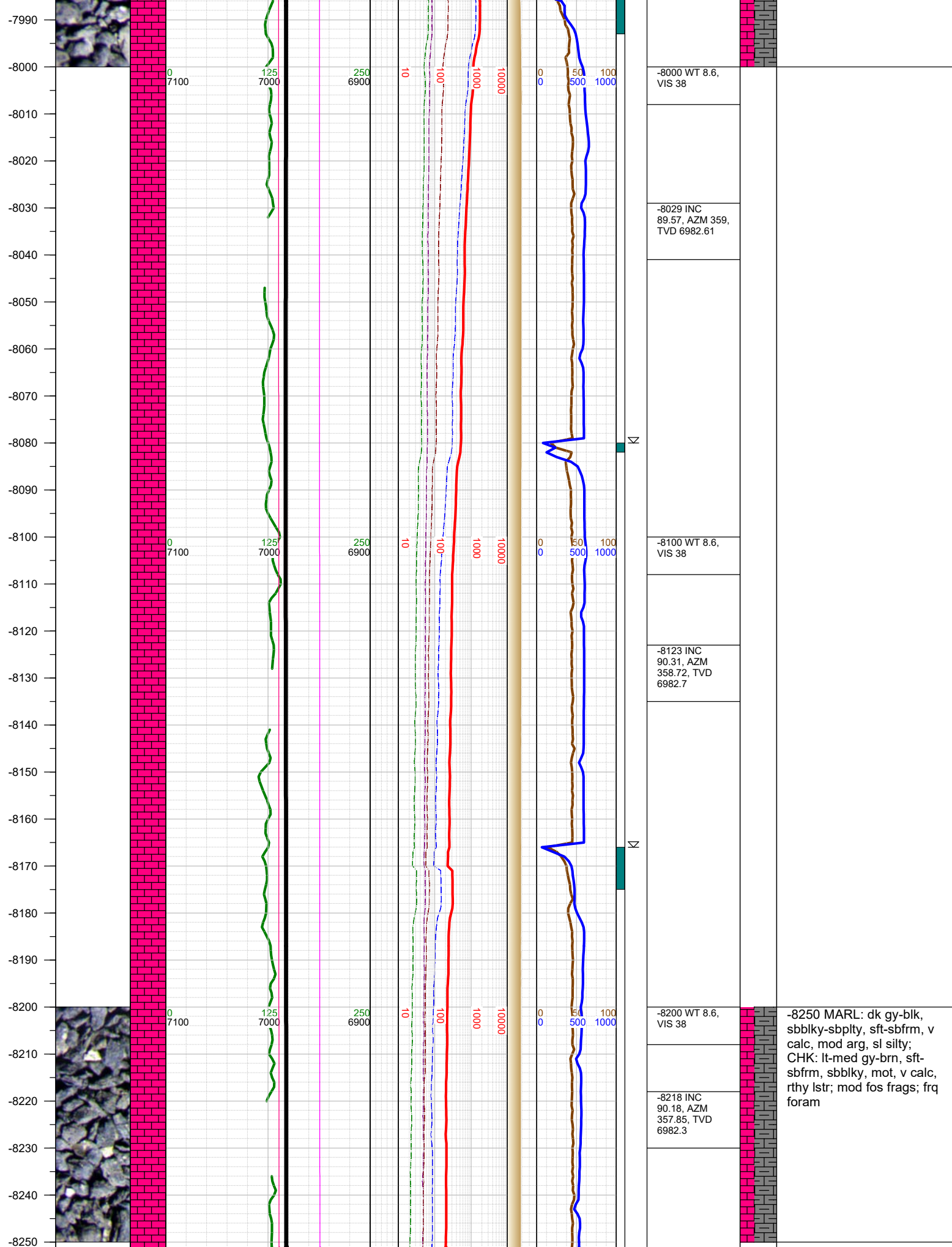


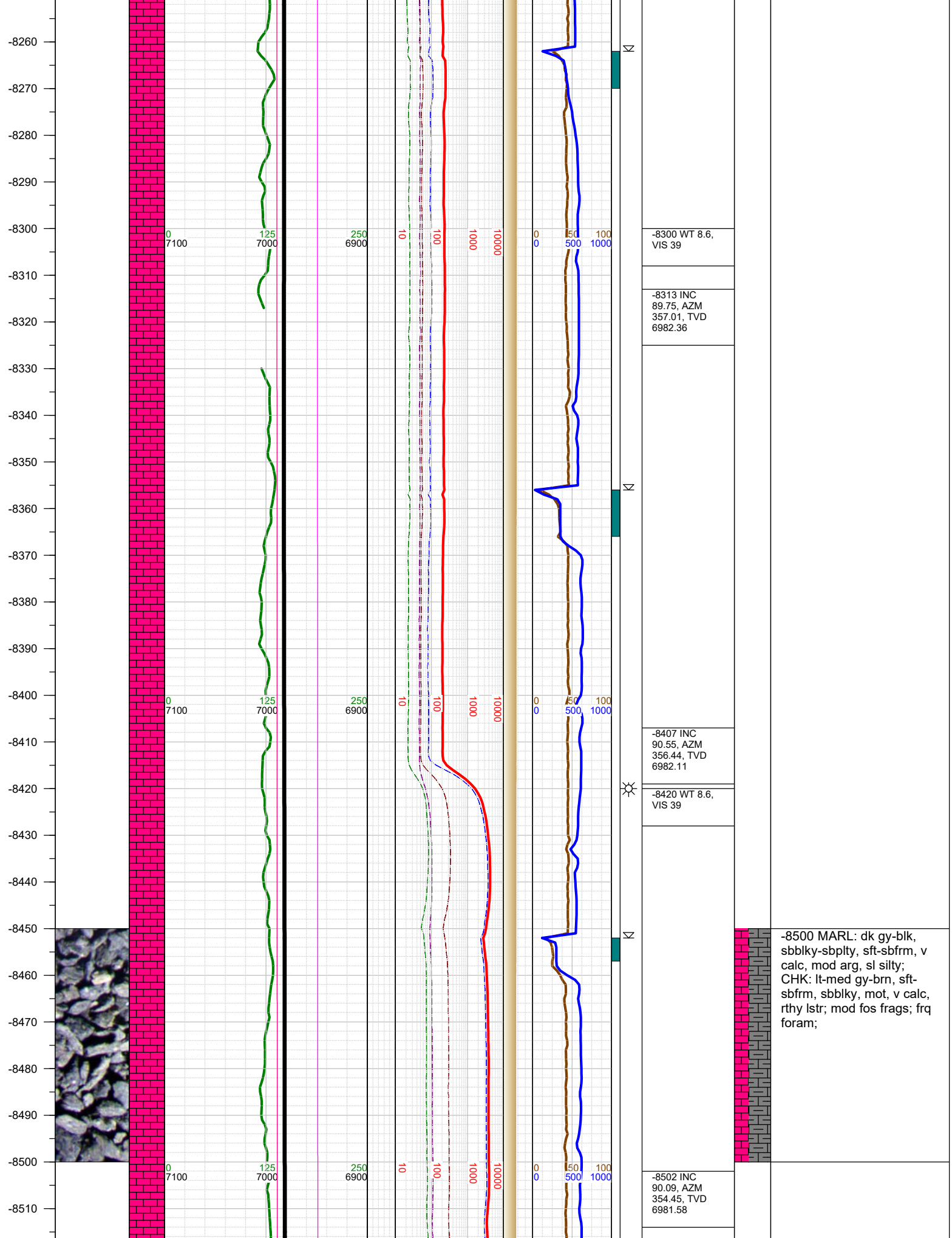




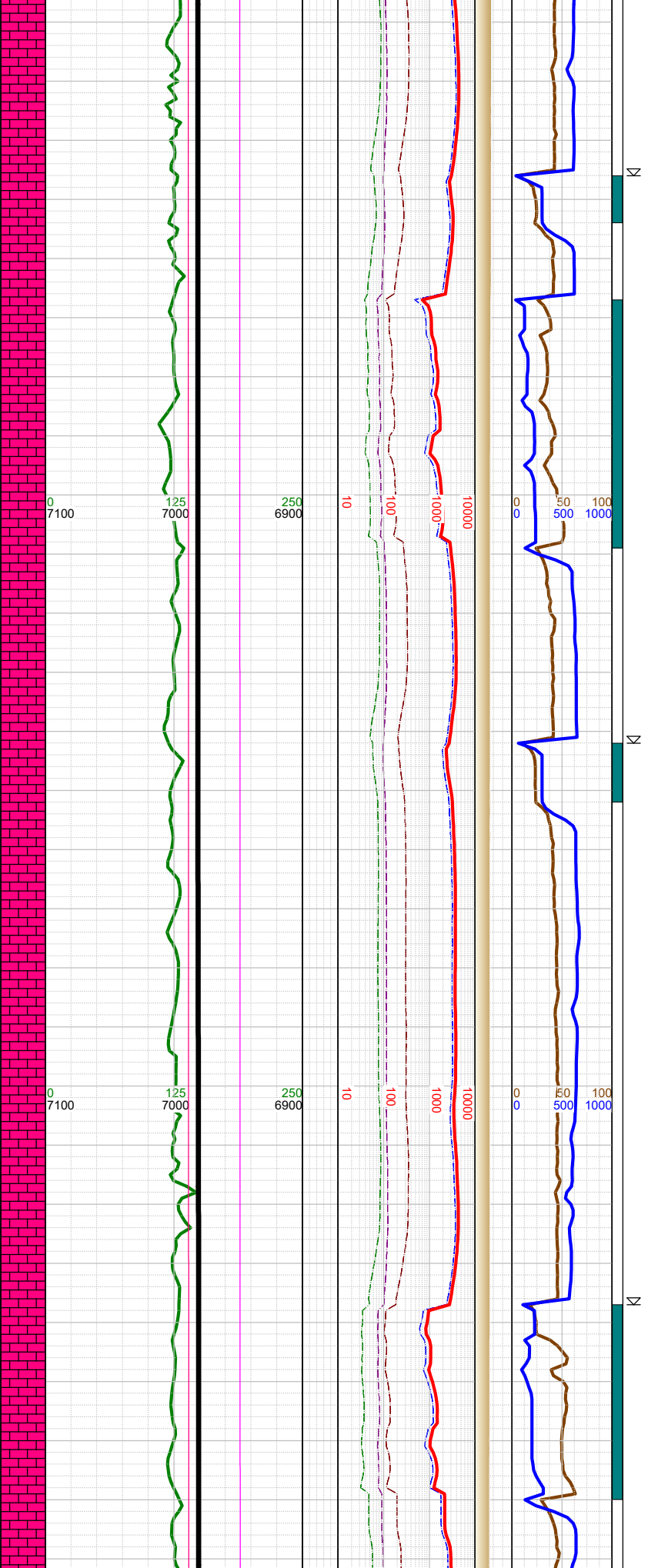
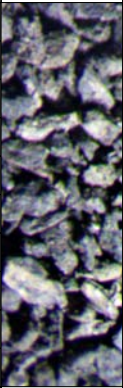




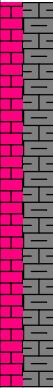




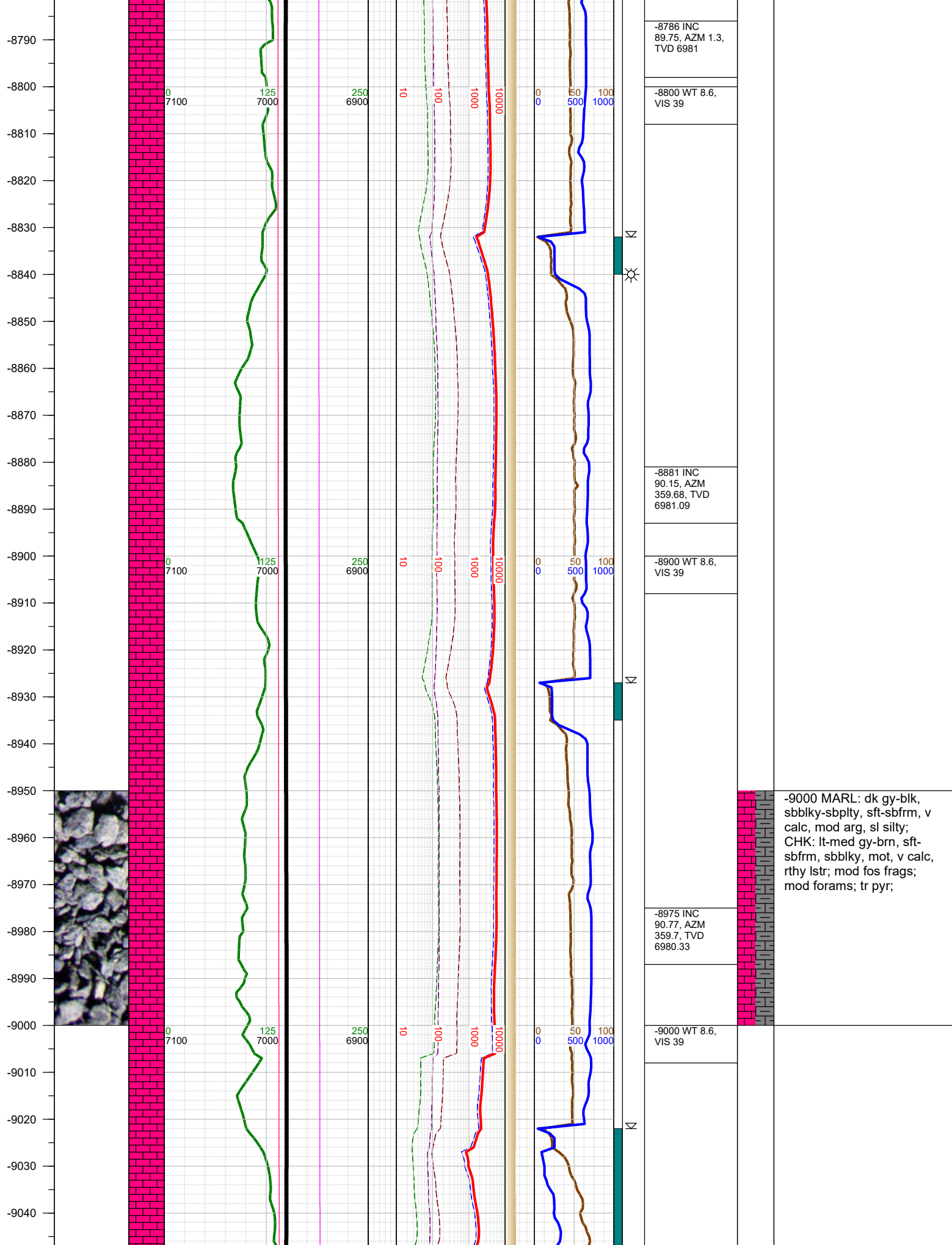
-8520
-8530
-8540
-8550
-8560
-8570
-8580
-8590
-8600
-8610
-8620
-8630
-8640
-8650
-8660
-8670
-8680
-8690
-8700
-8710
-8720
-8730
-8740
-8750
-8760
-8770
-8780

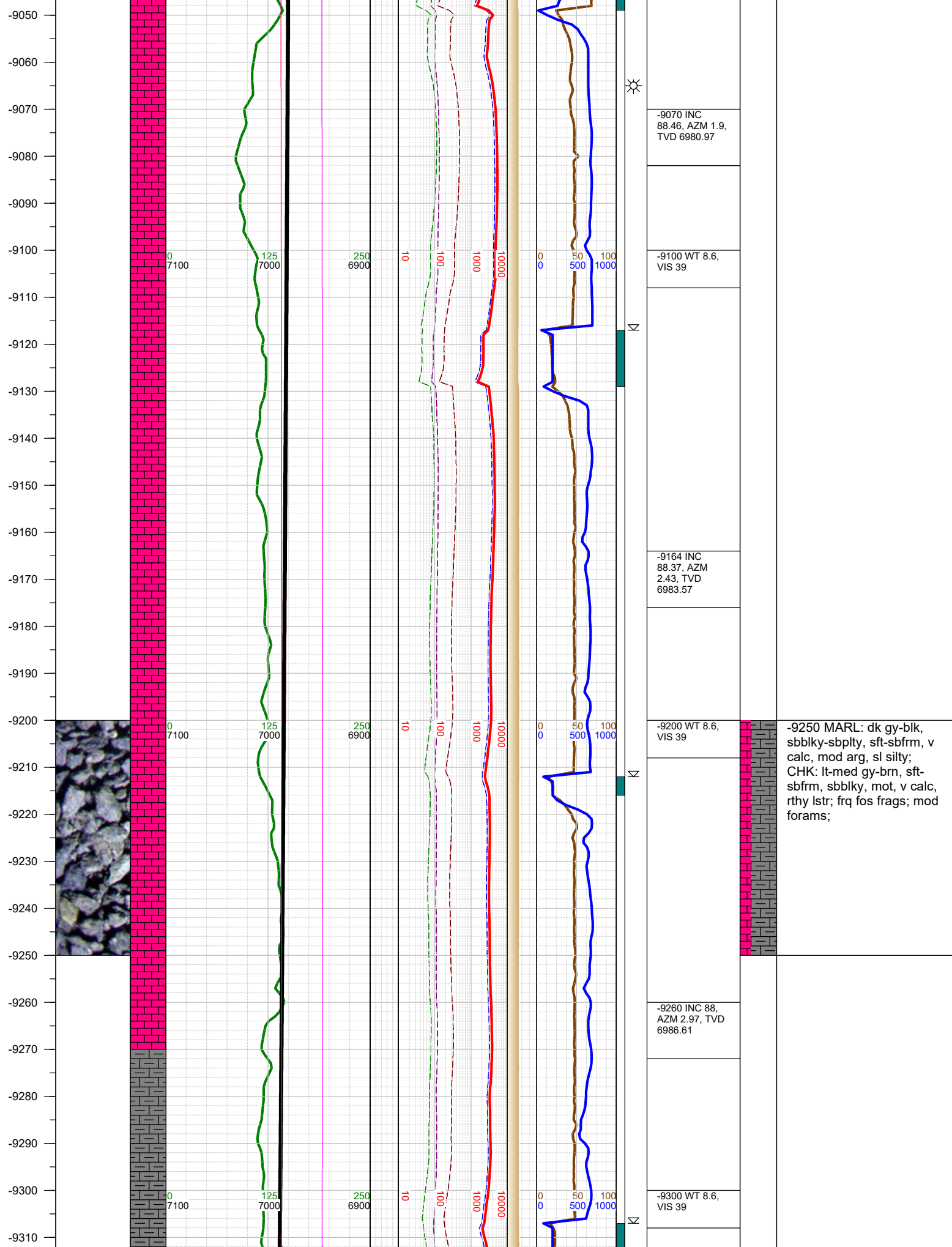


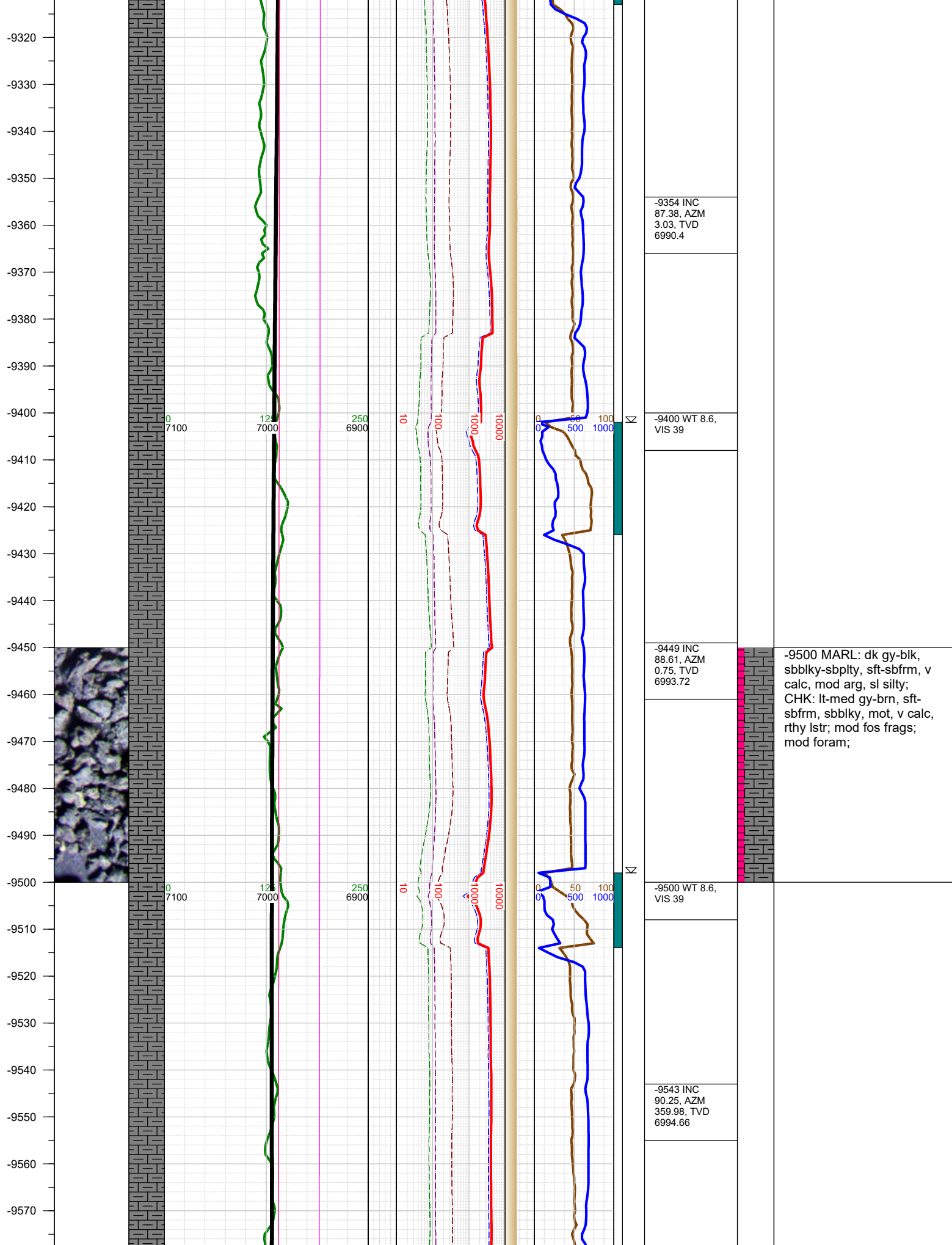
-8520 WT 8.6, VIS 39
-8597 INC 89.94, AZM 358.81, TVD 6981.55
-8610 WT 8.6, VIS 39
-8691 INC 90.49, AZM 359.21, TVD 6981.2
-8710 WT 8.6, VIS 39

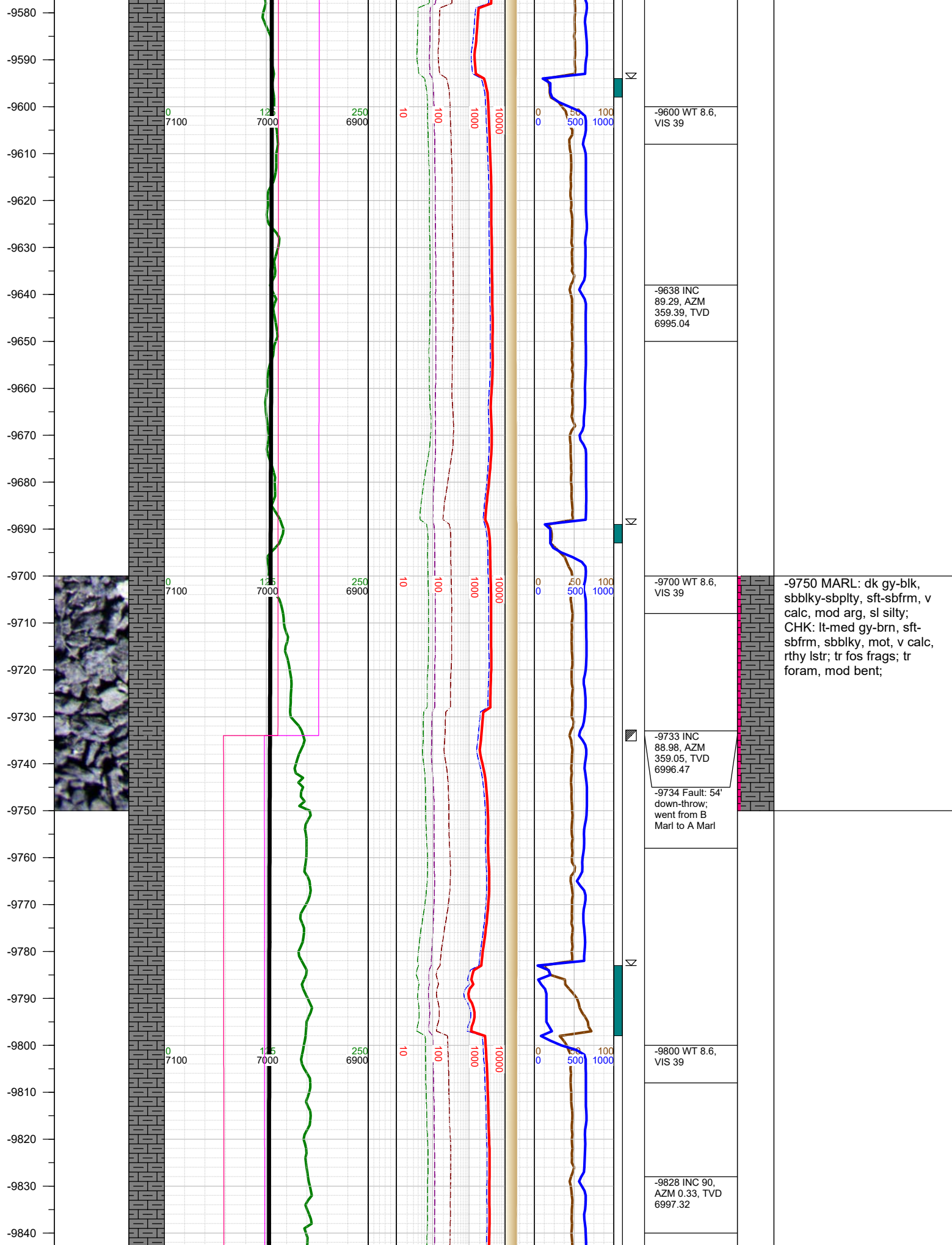


-8750 MARL: dk gy-blk,
sbbiky-sbplty, sft-sbfrm, v
calc, mod arg, sl silty;
CHK: lt-med gy-brn, sft-
sbfrm, sbbiky, mot, v calc,
rthy lstr; mod fos frags;
mod forams; tr pyr;

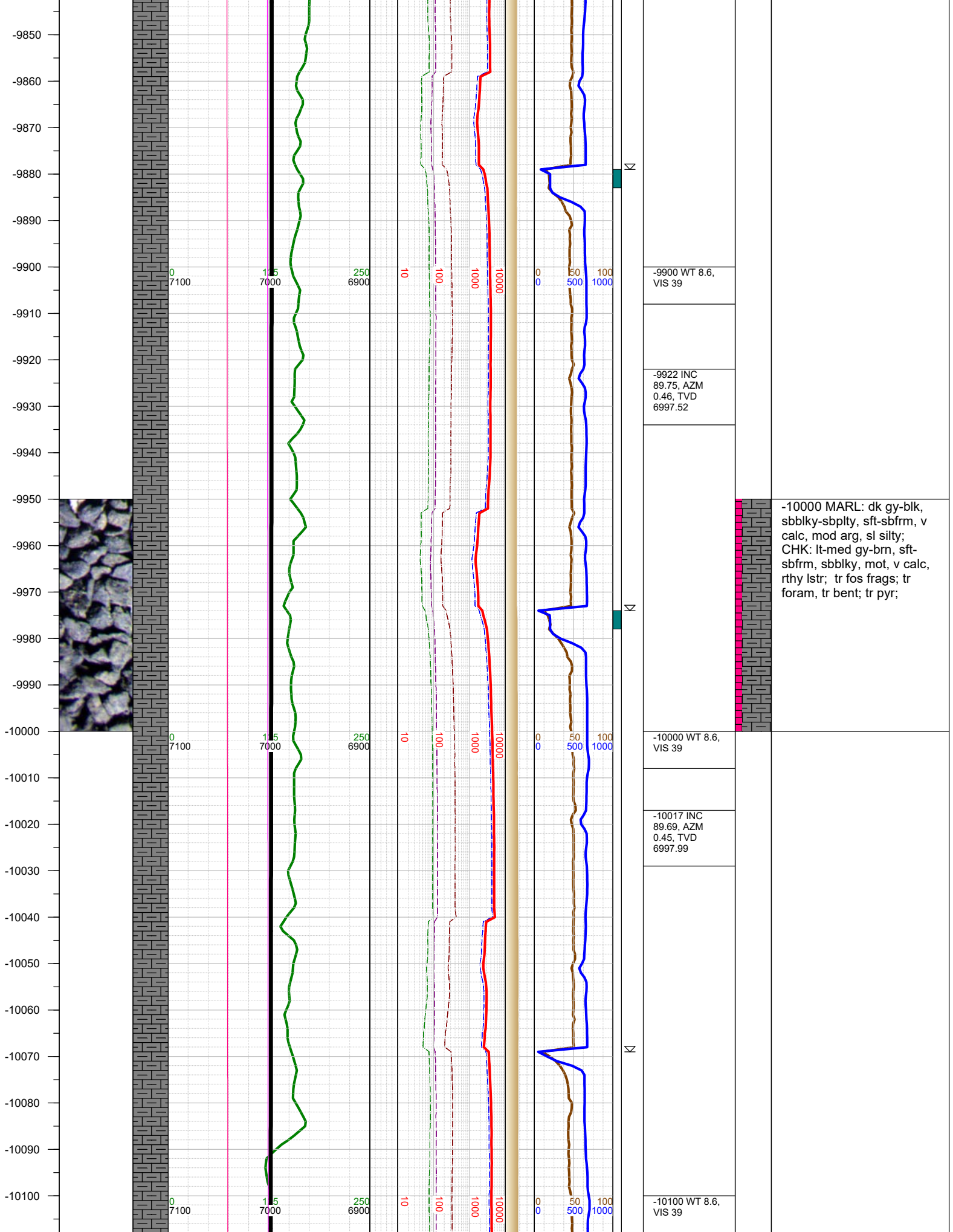


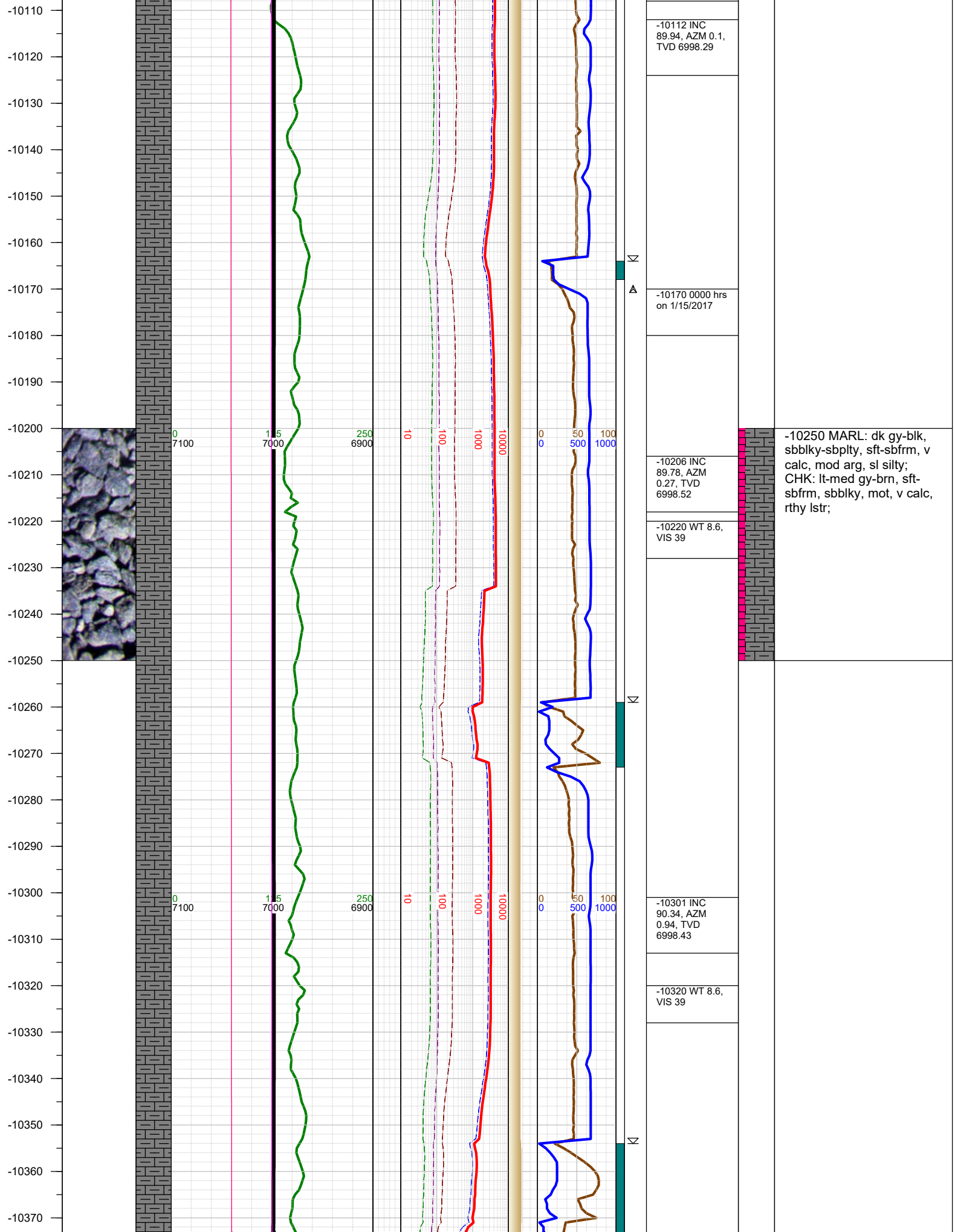




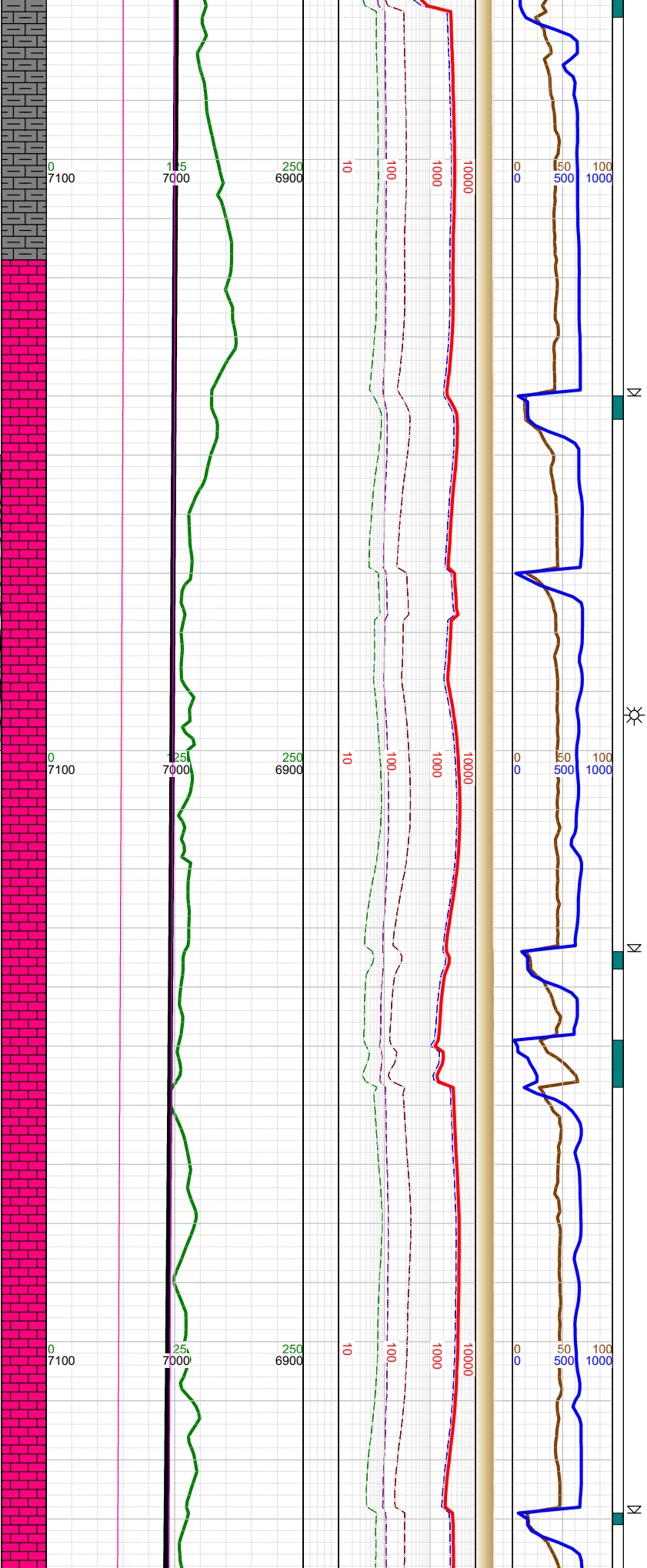


-9750 MARL: dk gy-blk, sbblky-sbplty, sft-sbfrm, v calc, mod arg, sl silty; CHK: lt-med gy-brn, sft-sbfrm, sbblky, mot, v calc, rthy lstr; tr fos frags; tr foram, mod bent;

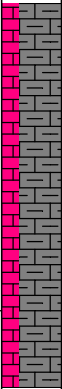




-10380
-10390
-10400
-10410
-10420
-10430
-10440
-10450
-10460
-10470
-10480
-10490
-10500
-10510
-10520
-10530
-10540
-10550
-10560
-10570
-10580
-10590
-10600
-10610
-10620
-10630

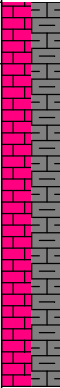
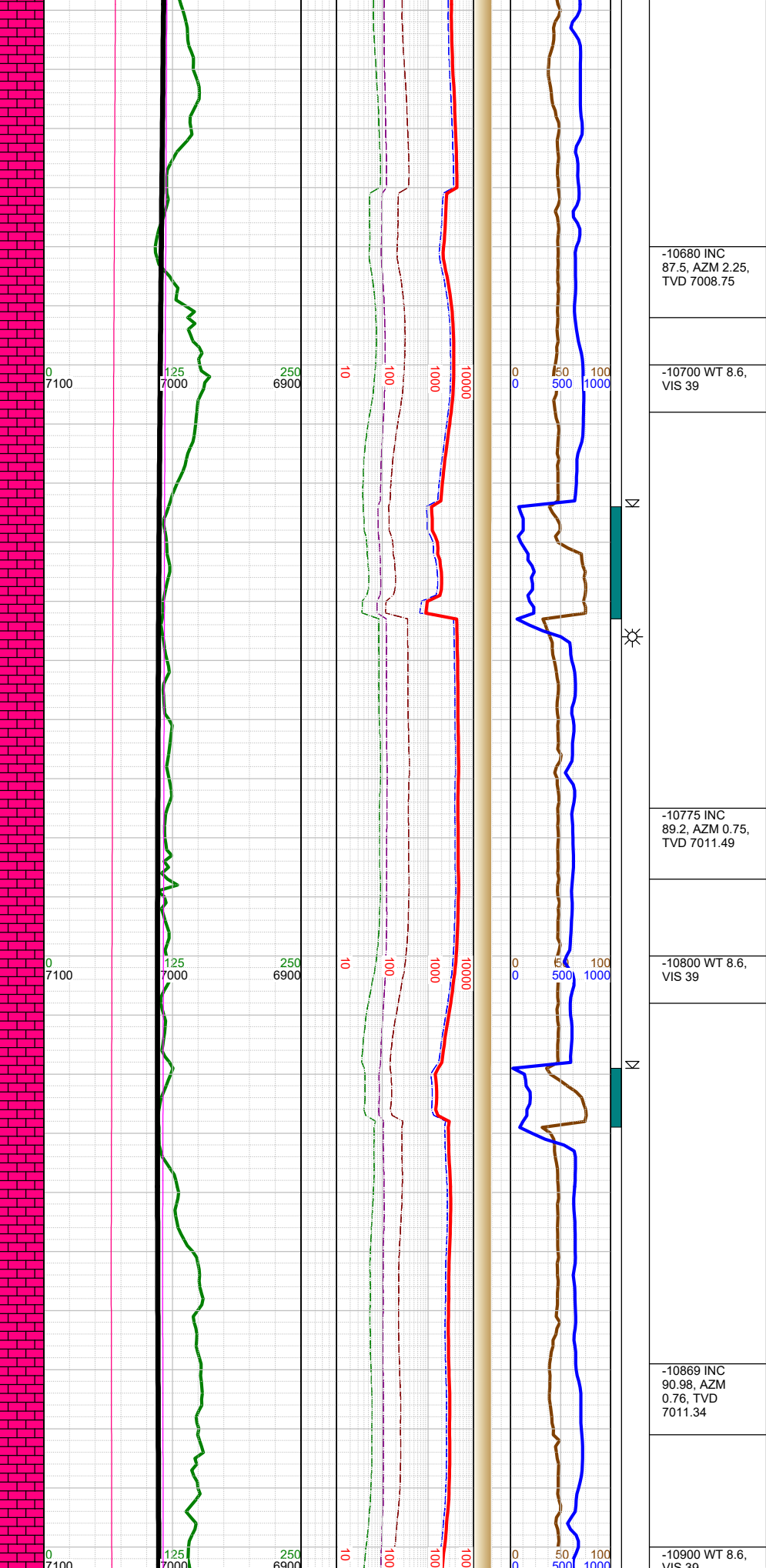


-10395 INC 88.58, AZM 2.06, TVD 6999.31
-10410 WT 8.6, VIS 39
-10427 INC 88.31, AZM 1.49, TVD 7000.18
-10490 INC 88.59, AZM 1.03, TVD 7001.88
-10510 WT 8.6, VIS 39
-10585 INC 87.81, AZM 2.55, TVD 7004.87
-10600 WT 8.6, VIS 39



-10500 MARL: dk gy-blk, sbblky-sbplty, sft-sbfrm, v calc, mod arg, sl silty; CHK: lt-med gy-brn, sft-sbfrm, sbblky, mot, v calc, rthy lstr; tr bent; tr pyr;

-10640
-10650
-10660
-10670
-10680
-10690
-10700
-10710
-10720
-10730
-10740
-10750
-10760
-10770
-10780
-10790
-10800
-10810
-10820
-10830
-10840
-10850
-10860
-10870
-10880
-10890
-10900



-10750 MARL: dk gy-blk,
sbbly-sbply, sft-sbfrm, v
calc, mod arg, sl silty;
CHK: lt-med gy-brn, sft-
sbfrm, sbbly, mot, v calc,
rthy lstr; tr pyr;

-10910
-10920
-10930
-10940
-10950
-10960
-10970
-10980
-10990
-11000
-11010
-11020
-11030
-11040
-11050
-11060
-11070
-11080
-11090
-11100
-11110
-11120
-11130
-11140
-11150
-11160



0
7100

125
7000

250
6900

10

100

1000

10000

0
0

50
500

100
1000

-10964 INC
90.8, AZM
357.76, TVD
7009.87

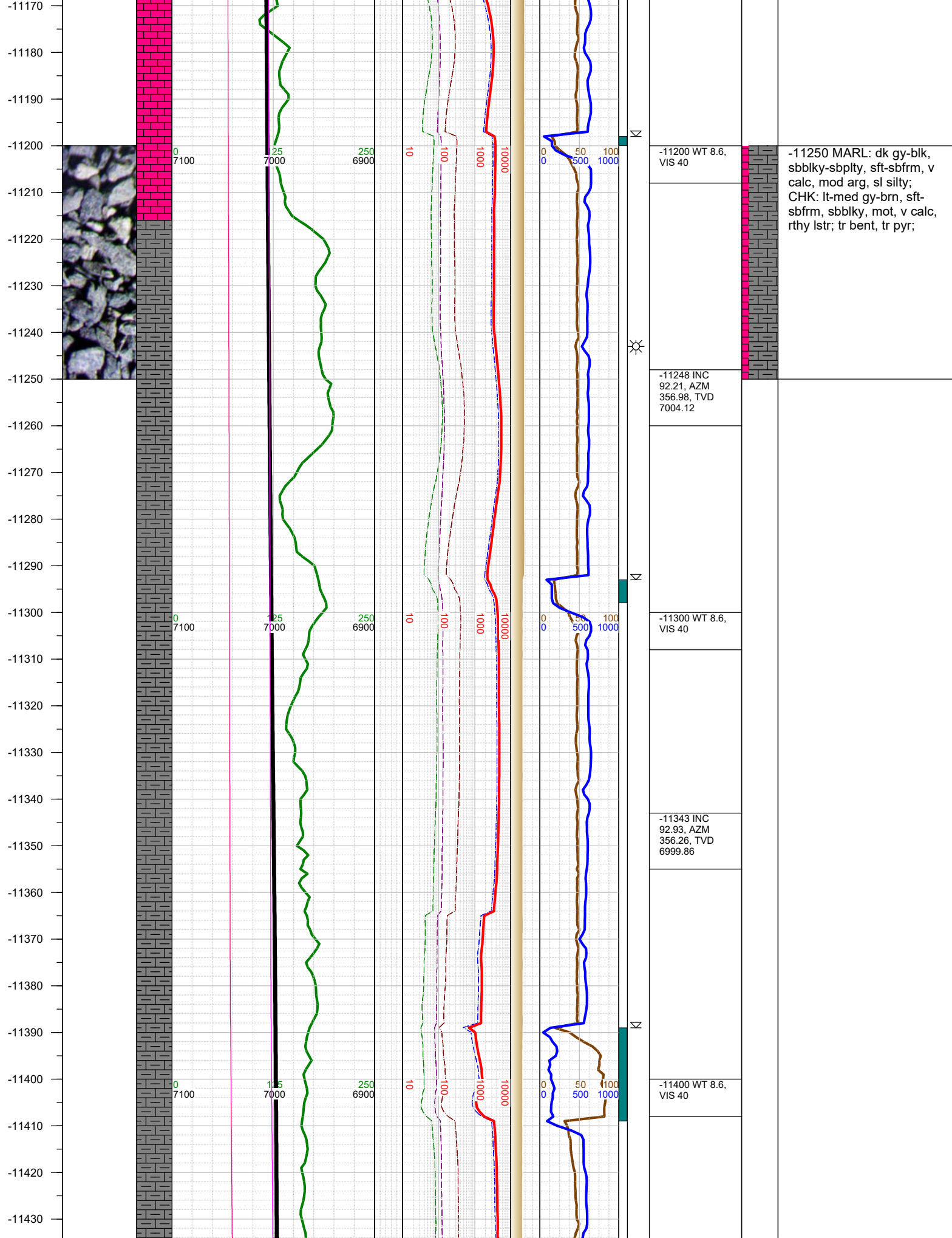
-11000 WT 8.6,
VIS 40

-11058 INC
90.34, AZM
356.51, TVD
7008.93

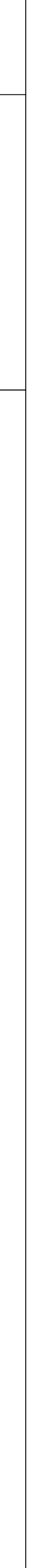
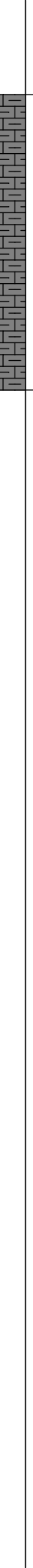
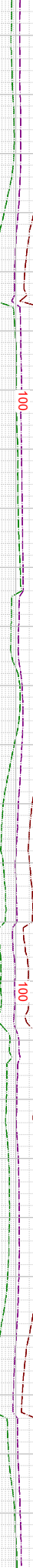
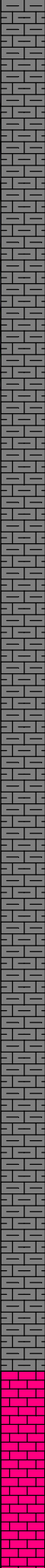
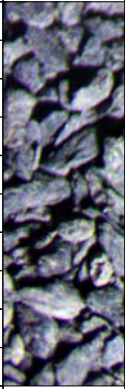
-11100 WT 8.6,
VIS 40

-11153 INC
91.63, AZM
357.23, TVD
7007.3

-11000 CHK: lt-med gy-
brn, sft-sbfrm, sbblky, mot,
v calc, rthy lstr; MARL: dk
gy-blk, sbblky-sbplty, sft-
sbfrm, v calc, mod arg, sl
silty; tr bent; tr pyr;



-11440
-11450
-11460
-11470
-11480
-11490
-11500
-11510
-11520
-11530
-11540
-11550
-11560
-11570
-11580
-11590
-11600
-11610
-11620
-11630
-11640
-11650
-11660
-11670
-11680
-11690



-11437 INC
91.08, AZM
355.49, TVD
6996.57

-11500 MARL: dk gy-blk,
sbbiky-sbply, sft-sbfrm, v
calc, mod arg, sl silty;
CHK: lt-med gy-brn, sft-
sbfrm, sbbiky, mot, v calc,
rthy lstr; tr bent, tr pyr;

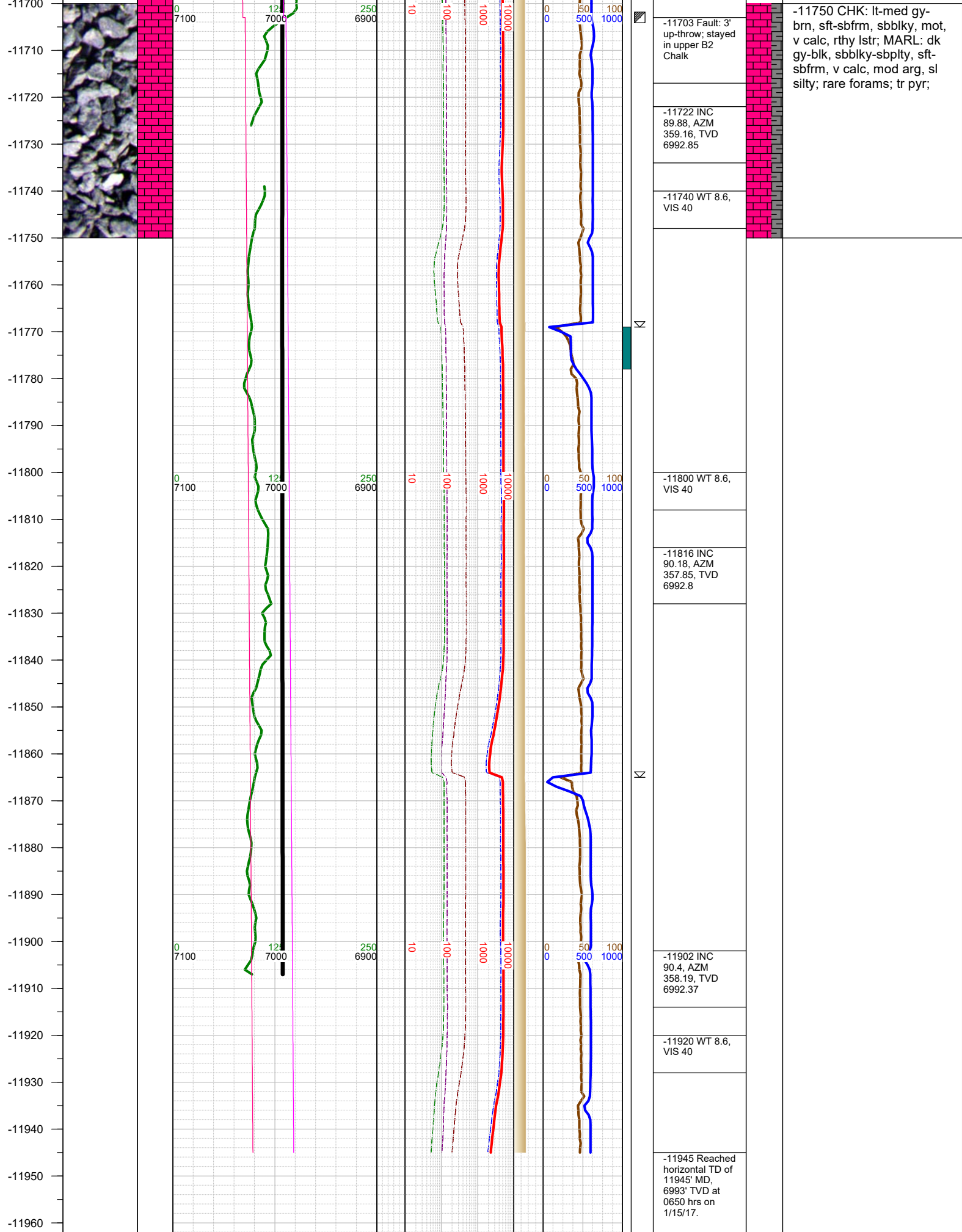
-11500 WT 8.6,
VIS 40

-11532 INC
91.51, AZM
355.09, TVD
6994.42

-11600 WT 8.6,
VIS 40

-11627 INC
90.25, AZM
359.11, TVD
6992.96





-11970

TOTAL DEPTH = 11945'

Thank you for using Earth Science Agency