

Location:	COLORADO	Slot:	SLOT#14 GOETZEL 32N-30B-M (2297'FSL & 2053'FWL, SEC.29)
Field:	WELD COUNTY (NAD83,TRUE NORTH)	Well:	GOETZEL 32N-30B-M
Facility:	SEC.29-T06N-R66W	Wellbore:	GOETZEL 32N-30B-M PWB

Plot reference wellpath is GOETZEL 32N-30B-M REV-A.0 PWP		Grid System: NAD83 / Lambert Colorado SP, Northern Zone (501), US feet
True vertical depths are referenced to H&P 562 (25) (RKB)	" = Wellpath was transformed from a different geodetic datum	
Measured depths are referenced to H&P 562 (25) (RKB)	North Reference: True north	
H&P 562 (25) (RKB) to Mean Sea Level: 4757 feet	Scale: True distance	
Mean Sea Level to Mud line (At SлотH14 GOETZEL 32N-30B-M (2297FSL & 2053FWL, SEC.29)): 0 feet	Depths are in feet	
Coordinates are in feet referenced to Sлот	Created by: wagnerj on 2017-02-27	
	Database: WA_DEN_Deriver_Dein	

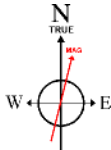
Facility Name			Grid East (US ft)	Grid North (US ft)	Latitude	Longitude
SEC 29-T06N-R66W			3194449.646	1411672.008	40°27'40.817"N	104°48'04.259"W
Slot	Local N (ft)	Local E (ft)	Grid East (US ft)	Grid North (US ft)	Latitude	Longitude
SLOT#14 GOETZLE 32N-30B-M (2297FSL & 2053FWL, SEC.29)	-1202.63	-821.47	3193637.706	1410462.984	40°27'28.933"N	104°48'14.886"W
H&P 562 (25) (RK8) to Mud line (N Slot: SLOT#14 GOETZLE 32N-30B-M (2297FSL & 2053FWL, SEC.29))					4757ft	
Mean Sea Level to Mud line (N Slot: SLOT#14 GOETZLE 32N-30B-M (2297FSL & 2053FWL, SEC.29))					0ft	
H&P 562 (25) (RK8) to Mean Sea Level					4757ft	

MD (ft)	Inc (°)	Az (°)	TVD (ft)	Local N (ft)	Local E (ft)	Grid East (US ft)	Grid North (US ft)	Latitude	Longitude
25.00	0.000	85.478	25.00	0.00	0.00	3193637.71	1410462.98	40°27'28.933"N	104°48'14.886"W

Well Profile Data								
Design Comment	MD (ft)	Inc (°)	Az (°)	TVD (ft)	Local N (ft)	Local E (ft)	DLS (°/100ft)	VS (ft)
Tie On	25.00	0.000	85.478	25.00	0.00	0.00	0.00	0.00
End of Tangent	2000.00	0.000	85.478	2000.00	0.00	0.00	0.00	0.00
End of Build	2936.79	18.736	85.478	2920.18	11.97	151.33	2.00	-151.71
End of Tangent	6204.67	18.736	85.478	6014.90	94.74	1197.72	0.00	-1200.75
End of 3D Arc	7563.76	90.000	267.128	6961.00	69.97	519.83	8.00	-522.43
End of Tangent	15834.81	90.000	267.128	6961.00	-344.50	-7740.82	0.00	7748.48

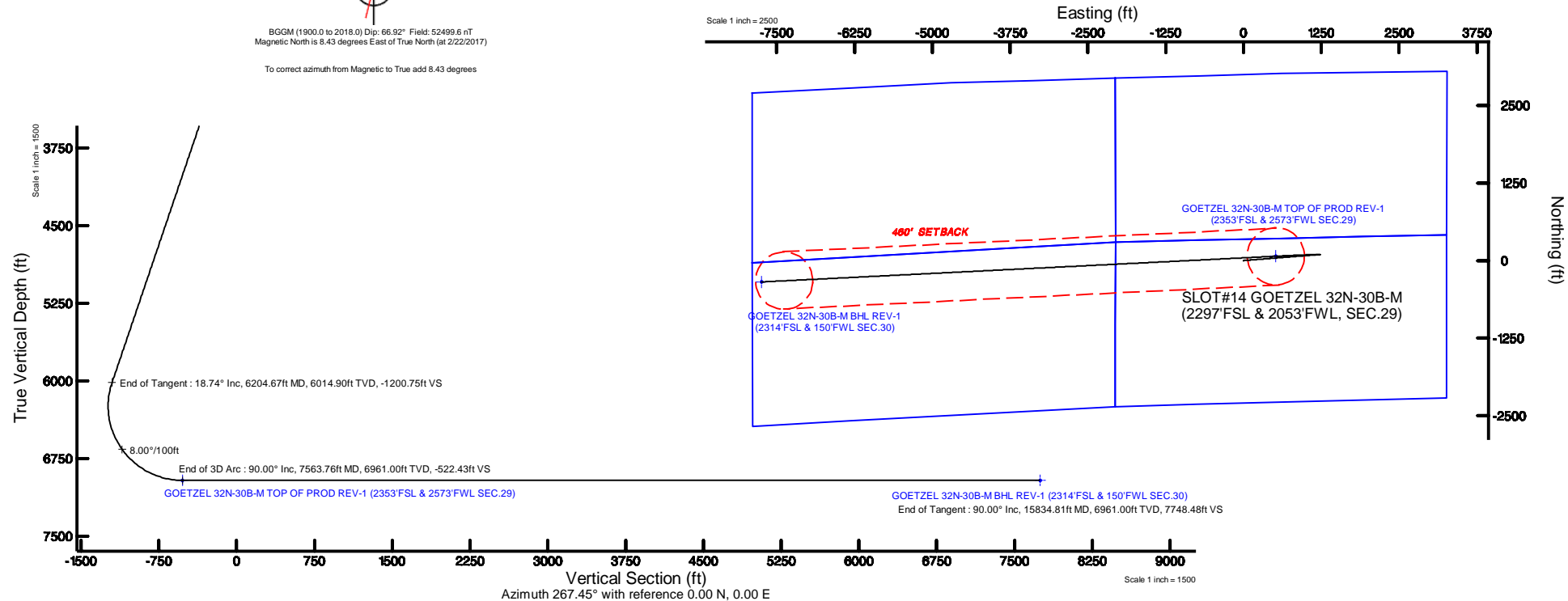
Start MD (ft)	End MD (ft)	Tool	Model	Log Name/Comment	Wellbore
25.00	1700.00	BHI NavTrak	Custom BHI NavTrak (Standard Rotating+Axial Corr) (Rockies 0.03Gt model)		GOETZEL 32N-30B-M PWB
1700.00	1583.41	BHI AutoTrak Cune	Custom BHI AutoTrak Cune (IFR1, Short) (Rockies 0.03Gt model)		GOETZEL 32N-30B-M PWB

Name	MD (ft)	TVD (ft)	Local N (ft)	Local E (ft)	GNS East (US ft)	GNS North (US ft)	Latitude	Longitude
SEC.29: TORN REEF NORTH		9.00	1202.64	821.45	319449.66	1411671.99	42°27'40.817"N	104°48'04.259"W
SEC.29: TORN REEF SOUTH		9.00	1202.64	821.45	319449.66	1411671.99	42°27'40.817"N	104°48'04.259"W
SEC.30: TORN REEF NORTH		9.00	1202.64	821.45	319449.66	1411671.99	42°27'40.817"N	104°48'04.259"W
SEC.30: TORN REEF SOUTH		9.00	1202.64	821.45	319449.66	1411671.99	42°27'40.817"N	104°48'04.259"W
GOETZEL 32N-30B-M-B/L ON PLAT (2314FSL & 510FWL SEC.30)		6961.00	-324.94	-7380.71	318260.06	1410080.16	42°27'25.711"N	104°49'05.365"W
GOETZEL 32N-30B-M-B/L REV.1 (2314FSL & 150FWL SEC.30)	15534.81	6961.00	-344.50	-7740.82	318260.06	1410057.76	42°27'25.514"N	104°49'05.024"W
GOETZEL 32N-30B-M TOP OF PROD REV.1 (2353FSL & 2573FWL SEC.29)	7553.76	6961.00	69.97	519.83	3194156.56	1410557.03	42°27'29.424"N	104°48'08.161"W



BGGM (1900.0 to 2018.0) Dip: 66.92° Field: 52499.6 nT
Magnetic North is 8.43 degrees East of True North (at 2/22/2017)

To correct azimuth from Magnetic to True add 8.43 degrees



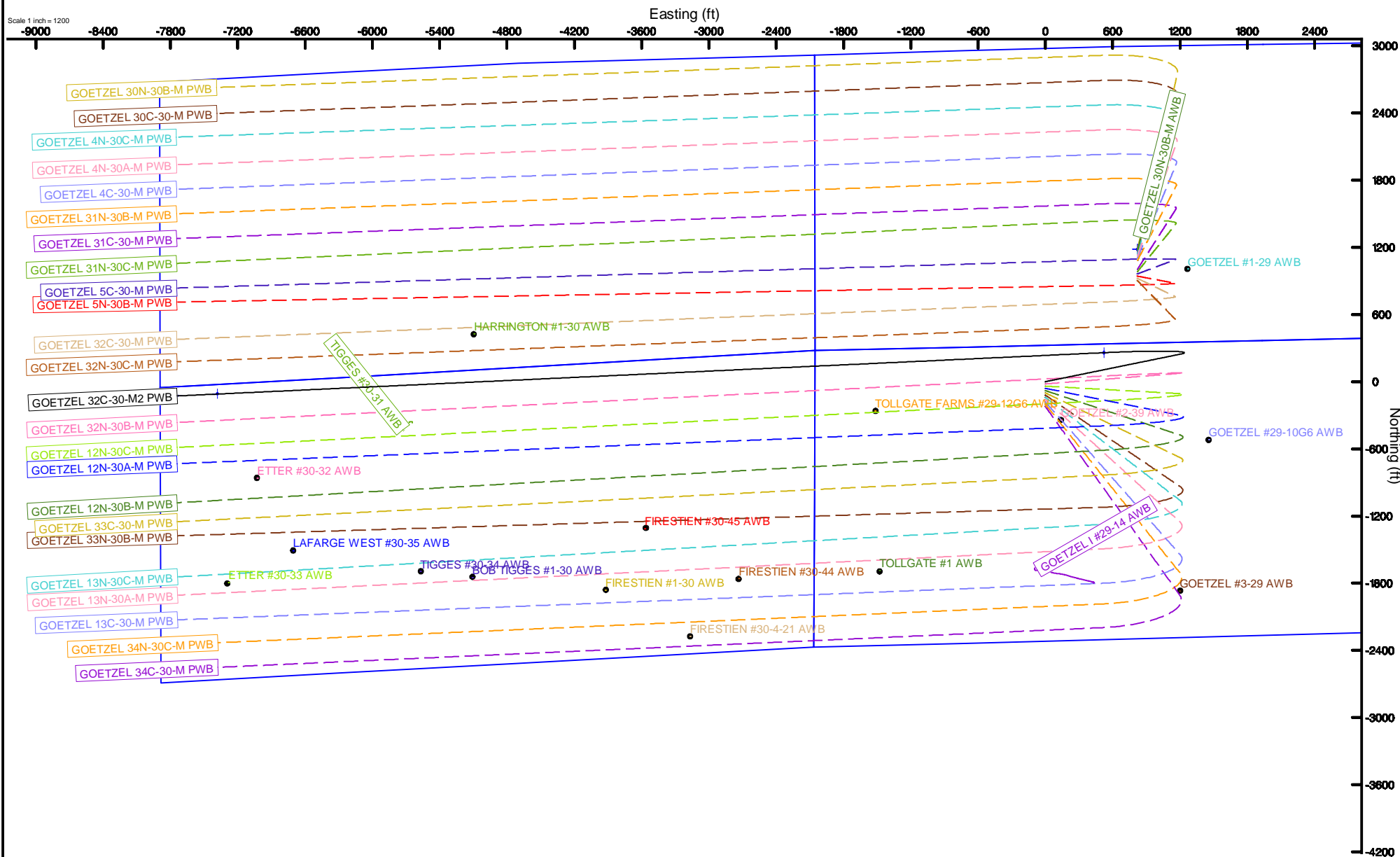
SYNERGY RESOURCES CORPORATION

Location: COLORADO Slot: SLOT#13 GOETZEL 32C-30-M2 (2317FSL & 2053FWL SEC.29)
 Field: WELD COUNTY (NAD83, TRUE NORTH) Well: GOETZEL 32C-30-M2
 Facility: SEC.29-T06N-R66W Wellbore: GOETZEL 32C-30-M2 PWB



BGGM (1900.0 to 2018.0) Dip: 66.92° Field: 52499.6 nT
 Magnetic North is 8.43 degrees East of True North (at 2/22/2017)

To correct azimuth from Magnetic to True add 8.43 degrees



GOETZEL_32N-30B-M_REV-A.0_PWP.1as

~VERSION INFORMATION

VERS. 2.0 : CWLS LOG ASCII STANDARD-VERSION 2.0

WRAP. NO : ASCII DATA SECTION CONTAINS ONE ROW PER WELLPATH STATION

~WELL INFORMATION

#MNEM	.UNITS	DATA	:DESCRIPTION
#----	.-----	----	:-----
STRT	.ft	0.00	:START MD
STOP	.ft	15834.81	:STOP MD
STEP	.ft	0.0	:STEP (non-uniform increment)
NULL	.	-999.99	:NULL
COMP	.	SYNERGY RESOURCES CORPORATION	:OPERATOR
WELL	.	GOETZEL 32N-30B-M	:WELL
FLD	.	WELD COUNTY (NAD83,TRUE NORTH)	:FIELD
LOC	.	COLORADO	:AREA (aka: Location)
CNTY	.	N/A	:COUNTY
STAT	.	N/A	:STATE
CTRY	.	N/A	:COUNTRY
SRVC	.	Baker Hughes	:CONTRACTOR
DATE	.	02/22/2017	:LOG REV DATE
API	.		:API NUMBER

~OTHER INFORMATION

#Software: wellArchitect(R) Version 5.0

#MNEM	.UNITS	DATA	:DESCRIPTION
#----	.-----	----	:-----
WPTYPE	.	PLANNED WELLPATH	:WELLPATH TYPE
FACILITY	.	SEC.29-T06N-R66W	:FACILITY
SLOT	.	SLOT#14 GOETZEL 32N-30B-M (2297'FSL & 2053'FWL, SEC.29):SLOT	:SLOT
WELLBORE	.	GOETZEL 32N-30B-M PWB	:WELLBORE
WELLPATH	.	GOETZEL 32N-30B-M REV-A.0 PWP	:WELLPATH
MDREFPT	.	H&P 562 (25') (RKB)	:MD REFERENCE POINT
TVDREFPT	.	H&P 562 (25') (RKB)	:TVD REFERENCE POINT
LCLREFPT	.	slot	:LOCAL COORDINATE REFERENCE PT
VSAZIMUTH.deg		267.45	:VERTICAL SECTION AZIMUTH
VSORIGN .ft		0.00	:VERTICAL SECTION ORIGIN NORTH
VSORIGE .ft		0.00	:VERTICAL SECTION ORIGIN EAST

~CURVE (WELLPATH) INFORMATION

#MNEM	.UNITS	:DESCRIPTION
#----	.-----	:-----
DEPT	.ft	:MEASURED DEPTH
INC	.deg	:INCLINATION
AZI	.deg	:AZIMUTH

GOETZEL_32N-30B-M_REV-A.0_PWP.1as

TVD .ft :TRUE VERTICAL DEPTH
 SECT .ft :CROSS SECTION (CURTAIN/VERTICAL)
 LOCALN .ft :LOCAL NORTH
 LOCALE .ft :LOCAL EAST
 LAT .deg :LATITUDE
 LONG .deg :LONGITUDE
 DLS .deg/100ft :DOGLEG SEVERITY

~ASCII DATA

0.00	0.00	85.48	0.00	0.00	0.00	0.00	40.4580369	-104.8041350	0.00
25.00	0.00	85.48	25.00	0.00	0.00	0.00	40.4580369	-104.8041350	0.00
125.00	0.00	85.48	125.00	0.00	0.00	0.00	40.4580369	-104.8041350	0.00
225.00	0.00	85.48	225.00	0.00	0.00	0.00	40.4580369	-104.8041350	0.00
325.00	0.00	85.48	325.00	0.00	0.00	0.00	40.4580369	-104.8041350	0.00
425.00	0.00	85.48	425.00	0.00	0.00	0.00	40.4580369	-104.8041350	0.00
525.00	0.00	85.48	525.00	0.00	0.00	0.00	40.4580369	-104.8041350	0.00
625.00	0.00	85.48	625.00	0.00	0.00	0.00	40.4580369	-104.8041350	0.00
725.00	0.00	85.48	725.00	0.00	0.00	0.00	40.4580369	-104.8041350	0.00
825.00	0.00	85.48	825.00	0.00	0.00	0.00	40.4580369	-104.8041350	0.00
925.00	0.00	85.48	925.00	0.00	0.00	0.00	40.4580369	-104.8041350	0.00
1025.00	0.00	85.48	1025.00	0.00	0.00	0.00	40.4580369	-104.8041350	0.00
1125.00	0.00	85.48	1125.00	0.00	0.00	0.00	40.4580369	-104.8041350	0.00
1225.00	0.00	85.48	1225.00	0.00	0.00	0.00	40.4580369	-104.8041350	0.00
1325.00	0.00	85.48	1325.00	0.00	0.00	0.00	40.4580369	-104.8041350	0.00
1425.00	0.00	85.48	1425.00	0.00	0.00	0.00	40.4580369	-104.8041350	0.00
1525.00	0.00	85.48	1525.00	0.00	0.00	0.00	40.4580369	-104.8041350	0.00
1625.00	0.00	85.48	1625.00	0.00	0.00	0.00	40.4580369	-104.8041350	0.00
1725.00	0.00	85.48	1725.00	0.00	0.00	0.00	40.4580369	-104.8041350	0.00
1825.00	0.00	85.48	1825.00	0.00	0.00	0.00	40.4580369	-104.8041350	0.00
1925.00	0.00	85.48	1925.00	0.00	0.00	0.00	40.4580369	-104.8041350	0.00
2000.00	0.00	85.48	2000.00	0.00	0.00	0.00	40.4580369	-104.8041350	0.00
2025.00	0.50	85.48	2025.00	-0.11	0.01	0.11	40.4580370	-104.8041346	2.00
2125.00	2.50	85.48	2124.96	-2.73	0.21	2.72	40.4580375	-104.8041252	2.00
2225.00	4.50	85.48	2224.77	-8.83	0.70	8.80	40.4580389	-104.8041034	2.00
2325.00	6.50	85.48	2324.30	-18.40	1.45	18.36	40.4580409	-104.8040690	2.00
2425.00	8.50	85.48	2423.44	-31.45	2.48	31.37	40.4580438	-104.8040223	2.00
2525.00	10.50	85.48	2522.07	-47.94	3.78	47.82	40.4580473	-104.8039632	2.00
2625.00	12.50	85.48	2620.05	-67.87	5.35	67.70	40.4580516	-104.8038917	2.00
2725.00	14.50	85.48	2717.29	-91.20	7.20	90.97	40.4580567	-104.8038081	2.00
2825.00	16.50	85.48	2813.64	-117.90	9.30	117.61	40.4580625	-104.8037124	2.00
2925.00	18.50	85.48	2909.01	-147.95	11.67	147.58	40.4580690	-104.8036047	2.00
2936.79	18.74	85.48	2920.18	-151.71	11.97	151.33	40.4580698	-104.8035912	2.00
3025.00	18.74	85.48	3003.72	-180.03	14.20	179.58	40.4580759	-104.8034897	0.00
3125.00	18.74	85.48	3098.42	-212.13	16.74	211.60	40.4580829	-104.8033746	0.00

GOETZEL_32N-30B-M_REV-A.0_PWP.1as

3225.00	18.74	85.48	3193.12	-244.23	19.27	243.62	40.4580898	-104.8032596	0.00
3325.00	18.74	85.48	3287.82	-276.34	21.80	275.64	40.4580968	-104.8031445	0.00
3425.00	18.74	85.48	3382.52	-308.44	24.33	307.66	40.4581037	-104.8030294	0.00
3525.00	18.74	85.48	3477.22	-340.54	26.87	339.68	40.4581107	-104.8029144	0.00
3625.00	18.74	85.48	3571.93	-372.64	29.40	371.70	40.4581176	-104.8027993	0.00
3725.00	18.74	85.48	3666.63	-404.74	31.93	403.72	40.4581246	-104.8026842	0.00
3825.00	18.74	85.48	3761.33	-436.84	34.47	435.74	40.4581315	-104.8025692	0.00
3925.00	18.74	85.48	3856.03	-468.94	37.00	467.76	40.4581385	-104.8024541	0.00
4025.00	18.74	85.48	3950.73	-501.05	39.53	499.78	40.4581454	-104.8023390	0.00
4125.00	18.74	85.48	4045.43	-533.15	42.06	531.80	40.4581524	-104.8022240	0.00
4225.00	18.74	85.48	4140.13	-565.25	44.60	563.82	40.4581593	-104.8021089	0.00
4325.00	18.74	85.48	4234.83	-597.35	47.13	595.84	40.4581663	-104.8019939	0.00
4425.00	18.74	85.48	4329.53	-629.45	49.66	627.86	40.4581732	-104.8018788	0.00
4525.00	18.74	85.48	4424.23	-661.55	52.19	659.88	40.4581802	-104.8017637	0.00
4625.00	18.74	85.48	4518.94	-693.65	54.73	691.90	40.4581871	-104.8016487	0.00
4725.00	18.74	85.48	4613.64	-725.75	57.26	723.92	40.4581941	-104.8015336	0.00
4825.00	18.74	85.48	4708.34	-757.86	59.79	755.94	40.4582010	-104.8014185	0.00
4925.00	18.74	85.48	4803.04	-789.96	62.33	787.97	40.4582080	-104.8013035	0.00
5025.00	18.74	85.48	4897.74	-822.06	64.86	819.99	40.4582149	-104.8011884	0.00
5125.00	18.74	85.48	4992.44	-854.16	67.39	852.01	40.4582219	-104.8010733	0.00
5225.00	18.74	85.48	5087.14	-886.26	69.92	884.03	40.4582288	-104.8009583	0.00
5325.00	18.74	85.48	5181.84	-918.36	72.46	916.05	40.4582358	-104.8008432	0.00
5425.00	18.74	85.48	5276.54	-950.46	74.99	948.07	40.4582427	-104.8007281	0.00
5525.00	18.74	85.48	5371.24	-982.56	77.52	980.09	40.4582497	-104.8006131	0.00
5625.00	18.74	85.48	5465.95	-1014.67	80.05	1012.11	40.4582566	-104.8004980	0.00
5725.00	18.74	85.48	5560.65	-1046.77	82.59	1044.13	40.4582636	-104.8003829	0.00
5825.00	18.74	85.48	5655.35	-1078.87	85.12	1076.15	40.4582705	-104.8002679	0.00
5925.00	18.74	85.48	5750.05	-1110.97	87.65	1108.17	40.4582775	-104.8001528	0.00
6025.00	18.74	85.48	5844.75	-1143.07	90.18	1140.19	40.4582844	-104.8000378	0.00
6125.00	18.74	85.48	5939.45	-1175.17	92.72	1172.21	40.4582914	-104.7999227	0.00
6204.67	18.74	85.48	6014.90	-1200.75	94.74	1197.72	40.4582969	-104.7998310	0.00
6225.00	17.11	85.31	6034.24	-1207.00	95.24	1203.96	40.4582983	-104.7998086	8.00
6325.00	9.12	83.64	6131.56	-1229.64	97.32	1226.53	40.4583040	-104.7997275	8.00
6425.00	1.23	60.19	6231.07	-1238.52	98.74	1235.35	40.4583079	-104.7996958	8.00
6525.00	6.92	271.74	6330.86	-1233.46	99.46	1230.26	40.4583099	-104.7997141	8.00
6625.00	14.91	269.23	6428.97	-1214.57	99.47	1211.34	40.4583099	-104.7997821	8.00
6725.00	22.91	268.45	6523.50	-1182.20	98.77	1178.97	40.4583080	-104.7998984	8.00
6825.00	30.90	268.06	6612.60	-1136.99	97.37	1133.78	40.4583041	-104.8000608	8.00
6925.00	38.90	267.82	6694.55	-1079.82	95.31	1076.65	40.4582985	-104.8002661	8.00
7025.00	46.90	267.65	6767.74	-1011.80	92.61	1008.68	40.4582911	-104.8005103	8.00
7125.00	54.90	267.52	6830.76	-934.26	89.34	931.21	40.4582821	-104.8007887	8.00
7225.00	62.90	267.41	6882.37	-848.70	85.56	845.73	40.4582717	-104.8010959	8.00
7325.00	70.90	267.32	6921.57	-756.79	81.33	753.92	40.4582602	-104.8014258	8.00
7425.00	78.90	267.24	6947.60	-660.32	76.75	657.56	40.4582476	-104.8017721	8.00

GOETZEL_32N-30B-M_REV-A.0_PWP.1as									
7525.00	86.90	267.16	6959.95	-561.17	71.91	558.53	40.4582343	-104.8021279	8.00
7563.76	90.00	267.13	6961.00	-522.43	69.97	519.83	40.4582290	-104.8022670	8.00
7625.00	90.00	267.13	6961.00	-461.19	66.91	458.67	40.4582206	-104.8024868	0.00
7725.00	90.00	267.13	6961.00	-361.19	61.89	358.80	40.4582068	-104.8028457	0.00
7825.00	90.00	267.13	6961.00	-261.20	56.88	258.92	40.4581931	-104.8032046	0.00
7925.00	90.00	267.13	6961.00	-161.20	51.87	159.05	40.4581793	-104.8035635	0.00
8025.00	90.00	267.13	6961.00	-61.20	46.86	59.17	40.4581656	-104.8039224	0.00
8125.00	90.00	267.13	6961.00	38.80	41.85	-40.70	40.4581518	-104.8042813	0.00
8225.00	90.00	267.13	6961.00	138.80	36.84	-140.57	40.4581381	-104.8046401	0.00
8325.00	90.00	267.13	6961.00	238.80	31.83	-240.45	40.4581243	-104.8049990	0.00
8425.00	90.00	267.13	6961.00	338.79	26.82	-340.32	40.4581105	-104.8053579	0.00
8525.00	90.00	267.13	6961.00	438.79	21.81	-440.20	40.4580968	-104.8057168	0.00
8625.00	90.00	267.13	6961.00	538.79	16.79	-540.07	40.4580830	-104.8060757	0.00
8725.00	90.00	267.13	6961.00	638.79	11.78	-639.95	40.4580693	-104.8064346	0.00
8825.00	90.00	267.13	6961.00	738.79	6.77	-739.82	40.4580555	-104.8067935	0.00
8925.00	90.00	267.13	6961.00	838.79	1.76	-839.69	40.4580417	-104.8071524	0.00
9025.00	90.00	267.13	6961.00	938.78	-3.25	-939.57	40.4580280	-104.8075113	0.00
9125.00	90.00	267.13	6961.00	1038.78	-8.26	-1039.44	40.4580142	-104.8078702	0.00
9225.00	90.00	267.13	6961.00	1138.78	-13.27	-1139.32	40.4580004	-104.8082291	0.00
9325.00	90.00	267.13	6961.00	1238.78	-18.28	-1239.19	40.4579867	-104.8085880	0.00
9425.00	90.00	267.13	6961.00	1338.78	-23.30	-1339.07	40.4579729	-104.8089469	0.00
9525.00	90.00	267.13	6961.00	1438.78	-28.31	-1438.94	40.4579591	-104.8093058	0.00
9625.00	90.00	267.13	6961.00	1538.77	-33.32	-1538.82	40.4579454	-104.8096647	0.00
9725.00	90.00	267.13	6961.00	1638.77	-38.33	-1638.69	40.4579316	-104.8100236	0.00
9825.00	90.00	267.13	6961.00	1738.77	-43.34	-1738.56	40.4579178	-104.8103825	0.00
9925.00	90.00	267.13	6961.00	1838.77	-48.35	-1838.44	40.4579040	-104.8107414	0.00
10025.00	90.00	267.13	6961.00	1938.77	-53.36	-1938.31	40.4578903	-104.8111002	0.00
10125.00	90.00	267.13	6961.00	2038.77	-58.37	-2038.19	40.4578765	-104.8114591	0.00
10225.00	90.00	267.13	6961.00	2138.77	-63.38	-2138.06	40.4578627	-104.8118180	0.00
10325.00	90.00	267.13	6961.00	2238.76	-68.40	-2237.94	40.4578489	-104.8121769	0.00
10425.00	90.00	267.13	6961.00	2338.76	-73.41	-2337.81	40.4578351	-104.8125358	0.00
10525.00	90.00	267.13	6961.00	2438.76	-78.42	-2437.68	40.4578214	-104.8128947	0.00
10625.00	90.00	267.13	6961.00	2538.76	-83.43	-2537.56	40.4578076	-104.8132536	0.00
10725.00	90.00	267.13	6961.00	2638.76	-88.44	-2637.43	40.4577938	-104.8136125	0.00
10825.00	90.00	267.13	6961.00	2738.76	-93.45	-2737.31	40.4577800	-104.8139714	0.00
10925.00	90.00	267.13	6961.00	2838.75	-98.46	-2837.18	40.4577662	-104.8143303	0.00
11025.00	90.00	267.13	6961.00	2938.75	-103.47	-2937.06	40.4577524	-104.8146892	0.00
11125.00	90.00	267.13	6961.00	3038.75	-108.49	-3036.93	40.4577387	-104.8150481	0.00
11225.00	90.00	267.13	6961.00	3138.75	-113.50	-3136.80	40.4577249	-104.8154070	0.00
11325.00	90.00	267.13	6961.00	3238.75	-118.51	-3236.68	40.4577111	-104.8157658	0.00
11425.00	90.00	267.13	6961.00	3338.75	-123.52	-3336.55	40.4576973	-104.8161247	0.00
11525.00	90.00	267.13	6961.00	3438.74	-128.53	-3436.43	40.4576835	-104.8164836	0.00
11625.00	90.00	267.13	6961.00	3538.74	-133.54	-3536.30	40.4576697	-104.8168425	0.00
11725.00	90.00	267.13	6961.00	3638.74	-138.55	-3636.18	40.4576559	-104.8172014	0.00

GOETZEL_32N-30B-M_REV-A.0_PWP.1as									
11825.00	90.00	267.13	6961.00	3738.74	-143.56	-3736.05	40.4576421	-104.8175603	0.00
11925.00	90.00	267.13	6961.00	3838.74	-148.57	-3835.93	40.4576283	-104.8179192	0.00
12025.00	90.00	267.13	6961.00	3938.74	-153.59	-3935.80	40.4576145	-104.8182781	0.00
12125.00	90.00	267.13	6961.00	4038.73	-158.60	-4035.67	40.4576007	-104.8186370	0.00
12225.00	90.00	267.13	6961.00	4138.73	-163.61	-4135.55	40.4575869	-104.8189959	0.00
12325.00	90.00	267.13	6961.00	4238.73	-168.62	-4235.42	40.4575731	-104.8193548	0.00
12425.00	90.00	267.13	6961.00	4338.73	-173.63	-4335.30	40.4575593	-104.8197136	0.00
12525.00	90.00	267.13	6961.00	4438.73	-178.64	-4435.17	40.4575455	-104.8200725	0.00
12625.00	90.00	267.13	6961.00	4538.73	-183.65	-4535.05	40.4575317	-104.8204314	0.00
12725.00	90.00	267.13	6961.00	4638.73	-188.66	-4634.92	40.4575179	-104.8207903	0.00
12825.00	90.00	267.13	6961.00	4738.72	-193.67	-4734.79	40.4575041	-104.8211492	0.00
12925.00	90.00	267.13	6961.00	4838.72	-198.69	-4834.67	40.4574903	-104.8215081	0.00
13025.00	90.00	267.13	6961.00	4938.72	-203.70	-4934.54	40.4574765	-104.8218670	0.00
13125.00	90.00	267.13	6961.00	5038.72	-208.71	-5034.42	40.4574627	-104.8222259	0.00
13225.00	90.00	267.13	6961.00	5138.72	-213.72	-5134.29	40.4574488	-104.8225848	0.00
13325.00	90.00	267.13	6961.00	5238.72	-218.73	-5234.17	40.4574350	-104.8229436	0.00
13425.00	90.00	267.13	6961.00	5338.71	-223.74	-5334.04	40.4574212	-104.8233025	0.00
13525.00	90.00	267.13	6961.00	5438.71	-228.75	-5433.92	40.4574074	-104.8236614	0.00
13625.00	90.00	267.13	6961.00	5538.71	-233.76	-5533.79	40.4573936	-104.8240203	0.00
13725.00	90.00	267.13	6961.00	5638.71	-238.78	-5633.66	40.4573798	-104.8243792	0.00
13825.00	90.00	267.13	6961.00	5738.71	-243.79	-5733.54	40.4573660	-104.8247381	0.00
13925.00	90.00	267.13	6961.00	5838.71	-248.80	-5833.41	40.4573521	-104.8250970	0.00
14025.00	90.00	267.13	6961.00	5938.70	-253.81	-5933.29	40.4573383	-104.8254559	0.00
14125.00	90.00	267.13	6961.00	6038.70	-258.82	-6033.16	40.4573245	-104.8258147	0.00
14225.00	90.00	267.13	6961.00	6138.70	-263.83	-6133.04	40.4573107	-104.8261736	0.00
14325.00	90.00	267.13	6961.00	6238.70	-268.84	-6232.91	40.4572968	-104.8265325	0.00
14425.00	90.00	267.13	6961.00	6338.70	-273.85	-6332.78	40.4572830	-104.8268914	0.00
14525.00	90.00	267.13	6961.00	6438.70	-278.86	-6432.66	40.4572692	-104.8272503	0.00
14625.00	90.00	267.13	6961.00	6538.69	-283.88	-6532.53	40.4572554	-104.8276092	0.00
14725.00	90.00	267.13	6961.00	6638.69	-288.89	-6632.41	40.4572415	-104.8279681	0.00
14825.00	90.00	267.13	6961.00	6738.69	-293.90	-6732.28	40.4572277	-104.8283270	0.00
14925.00	90.00	267.13	6961.00	6838.69	-298.91	-6832.16	40.4572139	-104.8286858	0.00
15025.00	90.00	267.13	6961.00	6938.69	-303.92	-6932.03	40.4572000	-104.8290447	0.00
15125.00	90.00	267.13	6961.00	7038.69	-308.93	-7031.91	40.4571862	-104.8294036	0.00
15225.00	90.00	267.13	6961.00	7138.69	-313.94	-7131.78	40.4571724	-104.8297625	0.00
15325.00	90.00	267.13	6961.00	7238.68	-318.95	-7231.65	40.4571585	-104.8301214	0.00
15425.00	90.00	267.13	6961.00	7338.68	-323.97	-7331.53	40.4571447	-104.8304803	0.00
15525.00	90.00	267.13	6961.00	7438.68	-328.98	-7431.40	40.4571309	-104.8308392	0.00
15625.00	90.00	267.13	6961.00	7538.68	-333.99	-7531.28	40.4571170	-104.8311980	0.00
15725.00	90.00	267.13	6961.00	7638.68	-339.00	-7631.15	40.4571032	-104.8315569	0.00
15825.00	90.00	267.13	6961.00	7738.68	-344.01	-7731.03	40.4570894	-104.8319158	0.00
15834.81	90.00	267.13	6961.00	7748.48	-344.50	-7740.82	40.4570880	-104.8319510	0.00



Planned Wellpath Report

GOETZEL 32N-30B-M REV-A.0 PWP

Page 1 of 8



REFERENCE WELLPATH IDENTIFICATION

Operator	SYNERGY RESOURCES CORPORATION	Slot	SLOT#14 GOETZEL 32N-30B-M (2297'FSL & 2053'FWL, SEC.29)
Area	COLORADO	Well	GOETZEL 32N-30B-M
Field	WELD COUNTY (NAD83,TRUE NORTH)	Wellbore	GOETZEL 32N-30B-M PWB
Facility	SEC.29-T06N-R66W		

REPORT SETUP INFORMATION

Projection System	NAD83 / Lambert Colorado SP, Northern Zone (501), US feet	Software System	WellArchitect® 5.0
North Reference	True	User	Wagnjam
Scale	0.999963	Report Generated	2/27/2017 at 5:01:00 PM
Convergence at slot	0.45° East	Database/Source file	WA_DEN_Denver_Defn/GOETZEL_32N-30B-M_REV-A.0_PWP.xml

WELLPATH LOCATION

	Local coordinates		Grid coordinates		Geographic coordinates	
	North[ft]	East[ft]	Easting[US ft]	Northing[US ft]	Latitude	Longitude
Slot Location	-1202.63	-821.47	3193637.71	1410462.98	40°27'28.933"N	104°48'14.886"W
Facility Reference Pt			3194449.65	1411672.01	40°27'40.817"N	104°48'04.259"W
Field Reference Pt			3171284.48	1426358.81	40°30'07.643"N	104°53'02.634"W

WELLPATH DATUM

Calculation method	Minimum curvature	H&P 562 (25') (RKB) to Facility Vertical Datum	4757.00ft
Horizontal Reference Pt	Slot	H&P 562 (25') (RKB) to Mean Sea Level	4757.00ft
Vertical Reference Pt	H&P 562 (25') (RKB)	H&P 562 (25') (RKB) to Mud Line at Slot (SLOT#14 GOETZEL 32N-30B-M (2297'FSL & 2053'FWL, SEC.29))	4757.00ft
MD Reference Pt	H&P 562 (25') (RKB)	Section Origin	N 0.00, E 0.00 ft
Field Vertical Reference	Mean Sea Level	Section Azimuth	267.45°



Planned Wellpath Report

GOETZEL 32N-30B-M REV-A.0 PWP

Page 2 of 8



REFERENCE WELLPATH IDENTIFICATION

Operator	SYNERGY RESOURCES CORPORATION	Slot	SLOT#14 GOETZEL 32N-30B-M (2297'FSL & 2053'FWL, SEC.29)
Area	COLORADO	Well	GOETZEL 32N-30B-M
Field	WELD COUNTY (NAD83,TRUE NORTH)	Wellbore	GOETZEL 32N-30B-M PWB
Facility	SEC.29-T06N-R66W		

WELLPATH DATA (165 stations) † = interpolated/extrapolated station

MD [ft]	Inclination [°]	Azimuth [°]	TVD [ft]	Vert Sect [ft]	North [ft]	East [ft]	DLS [°/100ft]	Comments
0.00†	0.000	85.478	0.00	0.00	0.00	0.00	0.00	
25.00	0.000	85.478	25.00	0.00	0.00	0.00	0.00	Tie On
125.00†	0.000	85.478	125.00	0.00	0.00	0.00	0.00	
225.00†	0.000	85.478	225.00	0.00	0.00	0.00	0.00	
325.00†	0.000	85.478	325.00	0.00	0.00	0.00	0.00	
425.00†	0.000	85.478	425.00	0.00	0.00	0.00	0.00	
525.00†	0.000	85.478	525.00	0.00	0.00	0.00	0.00	
625.00†	0.000	85.478	625.00	0.00	0.00	0.00	0.00	
725.00†	0.000	85.478	725.00	0.00	0.00	0.00	0.00	
825.00†	0.000	85.478	825.00	0.00	0.00	0.00	0.00	
925.00†	0.000	85.478	925.00	0.00	0.00	0.00	0.00	
1025.00†	0.000	85.478	1025.00	0.00	0.00	0.00	0.00	
1125.00†	0.000	85.478	1125.00	0.00	0.00	0.00	0.00	
1225.00†	0.000	85.478	1225.00	0.00	0.00	0.00	0.00	
1325.00†	0.000	85.478	1325.00	0.00	0.00	0.00	0.00	
1425.00†	0.000	85.478	1425.00	0.00	0.00	0.00	0.00	
1525.00†	0.000	85.478	1525.00	0.00	0.00	0.00	0.00	
1625.00†	0.000	85.478	1625.00	0.00	0.00	0.00	0.00	
1725.00†	0.000	85.478	1725.00	0.00	0.00	0.00	0.00	
1825.00†	0.000	85.478	1825.00	0.00	0.00	0.00	0.00	
1925.00†	0.000	85.478	1925.00	0.00	0.00	0.00	0.00	
2000.00	0.000	85.478	2000.00	0.00	0.00	0.00	0.00	End of Tangent
2025.00†	0.500	85.478	2025.00	-0.11	0.01	0.11	2.00	
2125.00†	2.500	85.478	2124.96	-2.73	0.21	2.72	2.00	
2225.00†	4.500	85.478	2224.77	-8.83	0.70	8.80	2.00	
2325.00†	6.500	85.478	2324.30	-18.40	1.45	18.36	2.00	
2425.00†	8.500	85.478	2423.44	-31.45	2.48	31.37	2.00	
2525.00†	10.500	85.478	2522.07	-47.94	3.78	47.82	2.00	
2625.00†	12.500	85.478	2620.05	-67.87	5.35	67.70	2.00	
2725.00†	14.500	85.478	2717.29	-91.20	7.20	90.97	2.00	



Planned Wellpath Report

GOETZEL 32N-30B-M REV-A.0 PWP

Page 3 of 8



REFERENCE WELLPATH IDENTIFICATION

Operator	SYNERGY RESOURCES CORPORATION	Slot	SLOT#14 GOETZEL 32N-30B-M (2297'FSL & 2053'FWL, SEC.29)
Area	COLORADO	Well	GOETZEL 32N-30B-M
Field	WELD COUNTY (NAD83,TRUE NORTH)	Wellbore	GOETZEL 32N-30B-M PWB
Facility	SEC.29-T06N-R66W		

WELLPATH DATA (165 stations) † = interpolated/extrapolated station

MD [ft]	Inclination [°]	Azimuth [°]	TVD [ft]	Vert Sect [ft]	North [ft]	East [ft]	DLS [°/100ft]	Comments
2825.00†	16.500	85.478	2813.64	-117.90	9.30	117.61	2.00	
2925.00†	18.500	85.478	2909.01	-147.95	11.67	147.58	2.00	
2936.79	18.736	85.478	2920.18	-151.71	11.97	151.33	2.00	End of Build
3025.00†	18.736	85.478	3003.72	-180.03	14.20	179.58	0.00	
3125.00†	18.736	85.478	3098.42	-212.13	16.74	211.60	0.00	
3225.00†	18.736	85.478	3193.12	-244.23	19.27	243.62	0.00	
3325.00†	18.736	85.478	3287.82	-276.34	21.80	275.64	0.00	
3425.00†	18.736	85.478	3382.52	-308.44	24.33	307.66	0.00	
3525.00†	18.736	85.478	3477.22	-340.54	26.87	339.68	0.00	
3625.00†	18.736	85.478	3571.93	-372.64	29.40	371.70	0.00	
3725.00†	18.736	85.478	3666.63	-404.74	31.93	403.72	0.00	
3825.00†	18.736	85.478	3761.33	-436.84	34.47	435.74	0.00	
3925.00†	18.736	85.478	3856.03	-468.94	37.00	467.76	0.00	
4025.00†	18.736	85.478	3950.73	-501.05	39.53	499.78	0.00	
4125.00†	18.736	85.478	4045.43	-533.15	42.06	531.80	0.00	
4225.00†	18.736	85.478	4140.13	-565.25	44.60	563.82	0.00	
4325.00†	18.736	85.478	4234.83	-597.35	47.13	595.84	0.00	
4425.00†	18.736	85.478	4329.53	-629.45	49.66	627.86	0.00	
4525.00†	18.736	85.478	4424.23	-661.55	52.19	659.88	0.00	
4625.00†	18.736	85.478	4518.94	-693.65	54.73	691.90	0.00	
4725.00†	18.736	85.478	4613.64	-725.75	57.26	723.92	0.00	
4825.00†	18.736	85.478	4708.34	-757.86	59.79	755.94	0.00	
4925.00†	18.736	85.478	4803.04	-789.96	62.33	787.97	0.00	
5025.00†	18.736	85.478	4897.74	-822.06	64.86	819.99	0.00	
5125.00†	18.736	85.478	4992.44	-854.16	67.39	852.01	0.00	
5225.00†	18.736	85.478	5087.14	-886.26	69.92	884.03	0.00	
5325.00†	18.736	85.478	5181.84	-918.36	72.46	916.05	0.00	
5425.00†	18.736	85.478	5276.54	-950.46	74.99	948.07	0.00	
5525.00†	18.736	85.478	5371.24	-982.56	77.52	980.09	0.00	
5625.00†	18.736	85.478	5465.95	-1014.67	80.05	1012.11	0.00	



Planned Wellpath Report

GOETZEL 32N-30B-M REV-A.0 PWP

Page 4 of 8



REFERENCE WELLPATH IDENTIFICATION

Operator	SYNERGY RESOURCES CORPORATION	Slot	SLOT#14 GOETZEL 32N-30B-M (2297'FSL & 2053'FWL, SEC.29)
Area	COLORADO	Well	GOETZEL 32N-30B-M
Field	WELD COUNTY (NAD83,TRUE NORTH)	Wellbore	GOETZEL 32N-30B-M PWB
Facility	SEC.29-T06N-R66W		

WELLPATH DATA (165 stations) † = interpolated/extrapolated station

MD [ft]	Inclination [°]	Azimuth [°]	TVD [ft]	Vert Sect [ft]	North [ft]	East [ft]	DLS [°/100ft]	Comments
5725.00†	18.736	85.478	5560.65	-1046.77	82.59	1044.13	0.00	
5825.00†	18.736	85.478	5655.35	-1078.87	85.12	1076.15	0.00	
5925.00†	18.736	85.478	5750.05	-1110.97	87.65	1108.17	0.00	
6025.00†	18.736	85.478	5844.75	-1143.07	90.18	1140.19	0.00	
6125.00†	18.736	85.478	5939.45	-1175.17	92.72	1172.21	0.00	
6204.67	18.736	85.478	6014.90	-1200.75	94.74	1197.72	0.00	End of Tangent
6225.00†	17.110	85.309	6034.24	-1207.00	95.24	1203.96	8.00	
6325.00†	9.118	83.639	6131.56	-1229.64	97.32	1226.53	8.00	
6425.00†	1.235	60.193	6231.07	-1238.52	98.74	1235.35	8.00	
6525.00†	6.921	271.742	6330.86	-1233.46	99.46	1230.26	8.00	
6625.00†	14.909	269.230	6428.97	-1214.57	99.47	1211.34	8.00	
6725.00†	22.905	268.452	6523.50	-1182.20	98.77	1178.97	8.00	
6825.00†	30.903	268.063	6612.60	-1136.99	97.37	1133.78	8.00	
6925.00†	38.902	267.821	6694.55	-1079.82	95.31	1076.65	8.00	
7025.00†	46.901	267.651	6767.74	-1011.80	92.61	1008.68	8.00	
7125.00†	54.901	267.521	6830.76	-934.26	89.34	931.21	8.00	
7225.00†	62.900	267.414	6882.37	-848.70	85.56	845.73	8.00	
7325.00†	70.900	267.321	6921.57	-756.79	81.33	753.92	8.00	
7425.00†	78.899	267.237	6947.60	-660.32	76.75	657.56	8.00	
7525.00†	86.899	267.158	6959.95	-561.17	71.91	558.53	8.00	
7563.76	90.000	267.128	6961.00 [†]	-522.43	69.97	519.83	8.00	End of 3D Arc
7625.00†	90.000	267.128	6961.00	-461.19	66.91	458.67	0.00	
7725.00†	90.000	267.128	6961.00	-361.19	61.89	358.80	0.00	
7825.00†	90.000	267.128	6961.00	-261.20	56.88	258.92	0.00	
7925.00†	90.000	267.128	6961.00	-161.20	51.87	159.05	0.00	
8025.00†	90.000	267.128	6961.00	-61.20	46.86	59.17	0.00	
8125.00†	90.000	267.128	6961.00	38.80	41.85	-40.70	0.00	
8225.00†	90.000	267.128	6961.00	138.80	36.84	-140.57	0.00	
8325.00†	90.000	267.128	6961.00	238.80	31.83	-240.45	0.00	
8425.00†	90.000	267.128	6961.00	338.79	26.82	-340.32	0.00	



Planned Wellpath Report

GOETZEL 32N-30B-M REV-A.0 PWP

Page 5 of 8



REFERENCE WELLPATH IDENTIFICATION

Operator	SYNERGY RESOURCES CORPORATION	Slot	SLOT#14 GOETZEL 32N-30B-M (2297'FSL & 2053'FWL, SEC.29)
Area	COLORADO	Well	GOETZEL 32N-30B-M
Field	WELD COUNTY (NAD83,TRUE NORTH)	Wellbore	GOETZEL 32N-30B-M PWB
Facility	SEC.29-T06N-R66W		

WELLPATH DATA (165 stations) † = interpolated/extrapolated station

MD [ft]	Inclination [°]	Azimuth [°]	TVD [ft]	Vert Sect [ft]	North [ft]	East [ft]	DLS [°/100ft]	Comments
8525.00†	90.000	267.128	6961.00	438.79	21.81	-440.20	0.00	
8625.00†	90.000	267.128	6961.00	538.79	16.79	-540.07	0.00	
8725.00†	90.000	267.128	6961.00	638.79	11.78	-639.95	0.00	
8825.00†	90.000	267.128	6961.00	738.79	6.77	-739.82	0.00	
8925.00†	90.000	267.128	6961.00	838.79	1.76	-839.69	0.00	
9025.00†	90.000	267.128	6961.00	938.78	-3.25	-939.57	0.00	
9125.00†	90.000	267.128	6961.00	1038.78	-8.26	-1039.44	0.00	
9225.00†	90.000	267.128	6961.00	1138.78	-13.27	-1139.32	0.00	
9325.00†	90.000	267.128	6961.00	1238.78	-18.28	-1239.19	0.00	
9425.00†	90.000	267.128	6961.00	1338.78	-23.30	-1339.07	0.00	
9525.00†	90.000	267.128	6961.00	1438.78	-28.31	-1438.94	0.00	
9625.00†	90.000	267.128	6961.00	1538.77	-33.32	-1538.82	0.00	
9725.00†	90.000	267.128	6961.00	1638.77	-38.33	-1638.69	0.00	
9825.00†	90.000	267.128	6961.00	1738.77	-43.34	-1738.56	0.00	
9925.00†	90.000	267.128	6961.00	1838.77	-48.35	-1838.44	0.00	
10025.00†	90.000	267.128	6961.00	1938.77	-53.36	-1938.31	0.00	
10125.00†	90.000	267.128	6961.00	2038.77	-58.37	-2038.19	0.00	
10225.00†	90.000	267.128	6961.00	2138.77	-63.38	-2138.06	0.00	
10325.00†	90.000	267.128	6961.00	2238.76	-68.40	-2237.94	0.00	
10425.00†	90.000	267.128	6961.00	2338.76	-73.41	-2337.81	0.00	
10525.00†	90.000	267.128	6961.00	2438.76	-78.42	-2437.68	0.00	
10625.00†	90.000	267.128	6961.00	2538.76	-83.43	-2537.56	0.00	
10725.00†	90.000	267.128	6961.00	2638.76	-88.44	-2637.43	0.00	
10825.00†	90.000	267.128	6961.00	2738.76	-93.45	-2737.31	0.00	
10925.00†	90.000	267.128	6961.00	2838.75	-98.46	-2837.18	0.00	
11025.00†	90.000	267.128	6961.00	2938.75	-103.47	-2937.06	0.00	
11125.00†	90.000	267.128	6961.00	3038.75	-108.49	-3036.93	0.00	
11225.00†	90.000	267.128	6961.00	3138.75	-113.50	-3136.80	0.00	
11325.00†	90.000	267.128	6961.00	3238.75	-118.51	-3236.68	0.00	
11425.00†	90.000	267.128	6961.00	3338.75	-123.52	-3336.55	0.00	



Planned Wellpath Report

GOETZEL 32N-30B-M REV-A.0 PWP

Page 6 of 8



REFERENCE WELLPATH IDENTIFICATION

Operator	SYNERGY RESOURCES CORPORATION	Slot	SLOT#14 GOETZEL 32N-30B-M (2297'FSL & 2053'FWL, SEC.29)
Area	COLORADO	Well	GOETZEL 32N-30B-M
Field	WELD COUNTY (NAD83,TRUE NORTH)	Wellbore	GOETZEL 32N-30B-M PWB
Facility	SEC.29-T06N-R66W		

WELLPATH DATA (165 stations) † = interpolated/extrapolated station

MD [ft]	Inclination [°]	Azimuth [°]	TVD [ft]	Vert Sect [ft]	North [ft]	East [ft]	DLS [°/100ft]	Comments
11525.00†	90.000	267.128	6961.00	3438.74	-128.53	-3436.43	0.00	
11625.00†	90.000	267.128	6961.00	3538.74	-133.54	-3536.30	0.00	
11725.00†	90.000	267.128	6961.00	3638.74	-138.55	-3636.18	0.00	
11825.00†	90.000	267.128	6961.00	3738.74	-143.56	-3736.05	0.00	
11925.00†	90.000	267.128	6961.00	3838.74	-148.57	-3835.93	0.00	
12025.00†	90.000	267.128	6961.00	3938.74	-153.59	-3935.80	0.00	
12125.00†	90.000	267.128	6961.00	4038.73	-158.60	-4035.67	0.00	
12225.00†	90.000	267.128	6961.00	4138.73	-163.61	-4135.55	0.00	
12325.00†	90.000	267.128	6961.00	4238.73	-168.62	-4235.42	0.00	
12425.00†	90.000	267.128	6961.00	4338.73	-173.63	-4335.30	0.00	
12525.00†	90.000	267.128	6961.00	4438.73	-178.64	-4435.17	0.00	
12625.00†	90.000	267.128	6961.00	4538.73	-183.65	-4535.05	0.00	
12725.00†	90.000	267.128	6961.00	4638.73	-188.66	-4634.92	0.00	
12825.00†	90.000	267.128	6961.00	4738.72	-193.67	-4734.79	0.00	
12925.00†	90.000	267.128	6961.00	4838.72	-198.69	-4834.67	0.00	
13025.00†	90.000	267.128	6961.00	4938.72	-203.70	-4934.54	0.00	
13125.00†	90.000	267.128	6961.00	5038.72	-208.71	-5034.42	0.00	
13225.00†	90.000	267.128	6961.00	5138.72	-213.72	-5134.29	0.00	
13325.00†	90.000	267.128	6961.00	5238.72	-218.73	-5234.17	0.00	
13425.00†	90.000	267.128	6961.00	5338.71	-223.74	-5334.04	0.00	
13525.00†	90.000	267.128	6961.00	5438.71	-228.75	-5433.92	0.00	
13625.00†	90.000	267.128	6961.00	5538.71	-233.76	-5533.79	0.00	
13725.00†	90.000	267.128	6961.00	5638.71	-238.78	-5633.66	0.00	
13825.00†	90.000	267.128	6961.00	5738.71	-243.79	-5733.54	0.00	
13925.00†	90.000	267.128	6961.00	5838.71	-248.80	-5833.41	0.00	
14025.00†	90.000	267.128	6961.00	5938.70	-253.81	-5933.29	0.00	
14125.00†	90.000	267.128	6961.00	6038.70	-258.82	-6033.16	0.00	
14225.00†	90.000	267.128	6961.00	6138.70	-263.83	-6133.04	0.00	
14325.00†	90.000	267.128	6961.00	6238.70	-268.84	-6232.91	0.00	
14425.00†	90.000	267.128	6961.00	6338.70	-273.85	-6332.78	0.00	



Planned Wellpath Report

GOETZEL 32N-30B-M REV-A.0 PWP

Page 7 of 8



REFERENCE WELLPATH IDENTIFICATION

Operator	SYNERGY RESOURCES CORPORATION	Slot	SLOT#14 GOETZEL 32N-30B-M (2297'FSL & 2053'FWL, SEC.29)
Area	COLORADO	Well	GOETZEL 32N-30B-M
Field	WELD COUNTY (NAD83,TRUE NORTH)	Wellbore	GOETZEL 32N-30B-M PWB
Facility	SEC.29-T06N-R66W		

WELLPATH DATA (165 stations) † = interpolated/extrapolated station

MD [ft]	Inclination [°]	Azimuth [°]	TVD [ft]	Vert Sect [ft]	North [ft]	East [ft]	DLS [°/100ft]	Comments
14525.00†	90.000	267.128	6961.00	6438.70	-278.86	-6432.66	0.00	
14625.00†	90.000	267.128	6961.00	6538.69	-283.88	-6532.53	0.00	
14725.00†	90.000	267.128	6961.00	6638.69	-288.89	-6632.41	0.00	
14825.00†	90.000	267.128	6961.00	6738.69	-293.90	-6732.28	0.00	
14925.00†	90.000	267.128	6961.00	6838.69	-298.91	-6832.16	0.00	
15025.00†	90.000	267.128	6961.00	6938.69	-303.92	-6932.03	0.00	
15125.00†	90.000	267.128	6961.00	7038.69	-308.93	-7031.91	0.00	
15225.00†	90.000	267.128	6961.00	7138.69	-313.94	-7131.78	0.00	
15325.00†	90.000	267.128	6961.00	7238.68	-318.95	-7231.65	0.00	
15425.00†	90.000	267.128	6961.00	7338.68	-323.97	-7331.53	0.00	
15525.00†	90.000	267.128	6961.00	7438.68	-328.98	-7431.40	0.00	
15625.00†	90.000	267.128	6961.00	7538.68	-333.99	-7531.28	0.00	
15725.00†	90.000	267.128	6961.00	7638.68	-339.00	-7631.15	0.00	
15825.00†	90.000	267.128	6961.00	7738.68	-344.01	-7731.03	0.00	
15834.81	90.000	267.128	6961.00 ²	7748.48	-344.50	-7740.82	0.00	End of Tangent

HOLE & CASING SECTIONS - Ref Wellbore: GOETZEL 32N-30B-M PWB Ref Wellpath: GOETZEL 32N-30B-M REV-A.0 PWP

String/Diameter	Start MD [ft]	End MD [ft]	Interval [ft]	Start TVD [ft]	End TVD [ft]	Start N/S [ft]	Start E/W [ft]	End N/S [ft]	End E/W [ft]
13.5in Open Hole	25.00	1700.00	1675.00	25.00	1700.00	0.00	0.00	0.00	0.00
8.5in Open Hole	1700.00	15834.00	14134.00	1700.00	6961.00	0.00	0.00	-344.46	-7740.01



Planned Wellpath Report

GOETZEL 32N-30B-M REV-A.0 PWP

Page 8 of 8



REFERENCE WELLPATH IDENTIFICATION

Operator	SYNERGY RESOURCES CORPORATION	Slot	SLOT#14 GOETZEL 32N-30B-M (2297'FSL & 2053'FWL, SEC.29)
Area	COLORADO	Well	GOETZEL 32N-30B-M
Field	WELD COUNTY (NAD83,TRUE NORTH)	Wellbore	GOETZEL 32N-30B-M PWB
Facility	SEC.29-T06N-R66W		

TARGETS

Name	MD [ft]	TVD [ft]	North [ft]	East [ft]	Grid East [US ft]	Grid North [US ft]	Latitude	Longitude	Shape
SEC.29-T06N-R66W NORTHERN		9.00	1202.64	821.45	3194449.66	1411671.99	40°27'40.817"N	104°48'04.259"W	polygon
SEC.29-T06N-R66W SOUTHERN		9.00	1202.64	821.45	3194449.66	1411671.99	40°27'40.817"N	104°48'04.259"W	polygon
SEC.30-T06N-R66W NORTHERN		9.00	1202.64	821.45	3194449.66	1411671.99	40°27'40.817"N	104°48'04.259"W	polygon
SEC.30-T06N-R66W SOUTHERN		9.00	1202.64	821.45	3194449.66	1411671.99	40°27'40.817"N	104°48'04.259"W	polygon
GOETZEL 32N-30B-M BHL ON PLAT (2314'FSL & 510'FWL SEC.30)		6961.00	-324.94	-7380.71	3186260.06	1410080.15	40°27'25.711"N	104°49'50.365"W	circle
2) GOETZEL 32N-30B-M BHL REV-1 (2314'FSL & 150'FWL SEC.30)	15834.81	6961.00	-344.50	-7740.82	3185900.13	1410057.76	40°27'25.517"N	104°49'55.024"W	point
1) GOETZEL 32N-30B-M TOP OF PROD REV-1 (2353'FSL & 2573'FWL SEC.29)	7563.76	6961.00	69.97	519.83	3194156.95	1410537.03	40°27'29.624"N	104°48'08.161"W	circle

SURVEY PROGRAM - Ref Wellbore: GOETZEL 32N-30B-M PWB Ref Wellpath: GOETZEL 32N-30B-M REV-A.0 PWP

Start MD [ft]	End MD [ft]	Positional Uncertainty Model	Log Name/Comment	Wellbore
25.00	1700.00	Custom BHI NaviTrak (Standard Rotating+Axial Corr) (Rockies 0.03Gt model)		GOETZEL 32N-30B-M PWB
1700.00	15834.81	Custom BHI AutoTrak Curve (IFR1, Short) (Rockies 0.03Gt model)		GOETZEL 32N-30B-M PWB