

Magnetic Field  
Strength: 53331.8snT  
Dip Angle: 67.15°  
Date: 12/31/2009  
Model: IGRF200510

## SECTION DETAILS

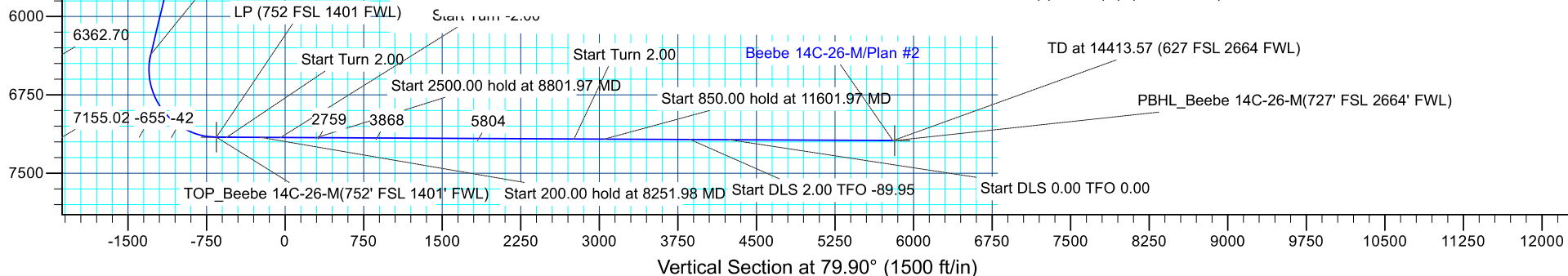
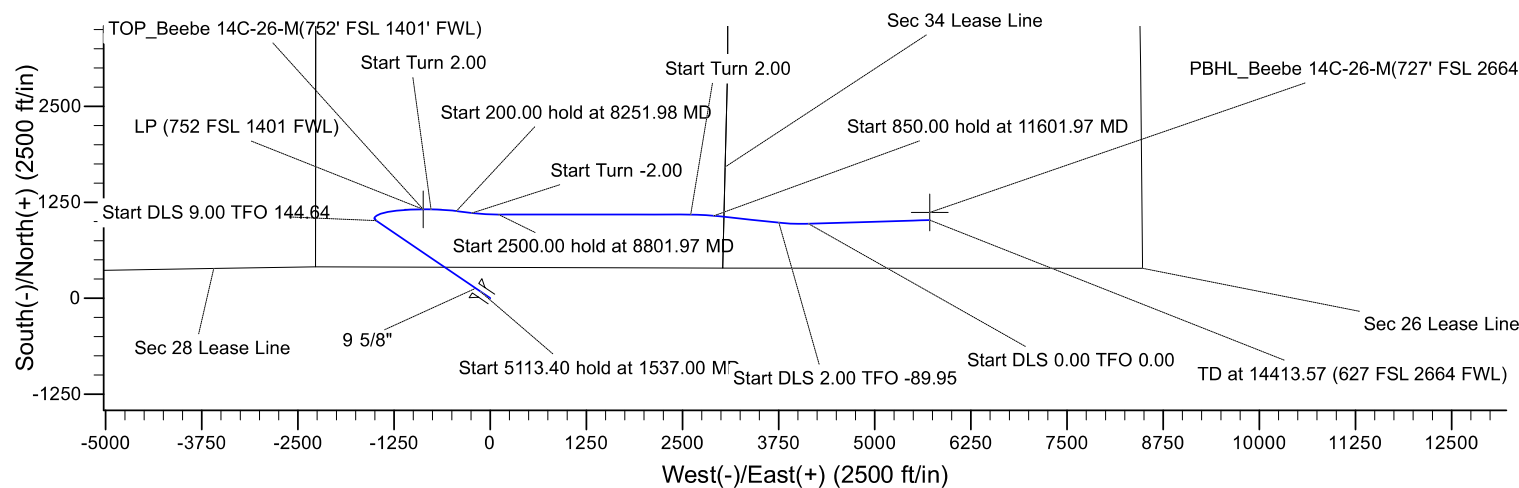
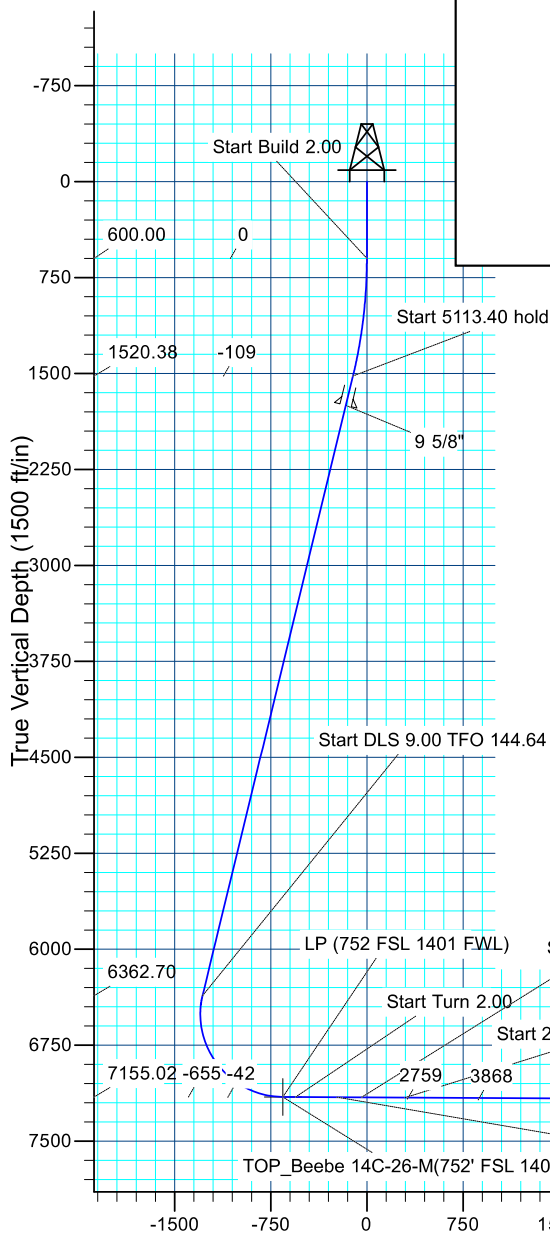
MD	Inc	Azi	TVD	+N/-S	+E/-W	Dleg TFace	VSec	Target
0.00	0.00	0.00	0.00	0.00	0.00	0.00	0.00	
600.00	0.00	0.00	600.00	0.00	0.00	0.00	0.00	
1537.00	18.74	304.30	1520.38	85.58	-125.46	2.00	304.30 -108.50	
6650.40	18.74	304.30	6362.70	1011.35	-1482.58	0.00	0.00 1282.19	
7818.98	89.71	90.34	7155.02	1157.08	-871.25	9.00	144.64 -654.78	
7918.98	89.71	90.34	7155.53	1156.49	-771.26	0.00	0.00 -556.44	
8251.98	89.71	97.00	7157.21	1135.18	-439.13	2.00	90.02 -233.20	
8451.98	89.71	97.00	7158.23	1110.81	-240.63	0.00	0.00 -42.05	
8801.97	89.71	90.00	7160.00	1089.46	108.49	2.00	-90.02 297.91	
11301.97	89.71	90.00	7172.65	1089.46	2608.46	0.00	0.00 2759.12	
11601.97	89.71	96.00	7174.17	1073.76	2907.91	2.00	90.02 3051.17	
12451.97	89.71	96.00	7178.48	984.92	3753.24	0.00	0.00 867.81	
12838.30	89.72	88.27	7180.40	970.52	4139.00	2.00	-89.95 2425.07	
14413.57	89.73	88.27	7188.00	1017.99	5713.54	0.00	0.00 5803.52	

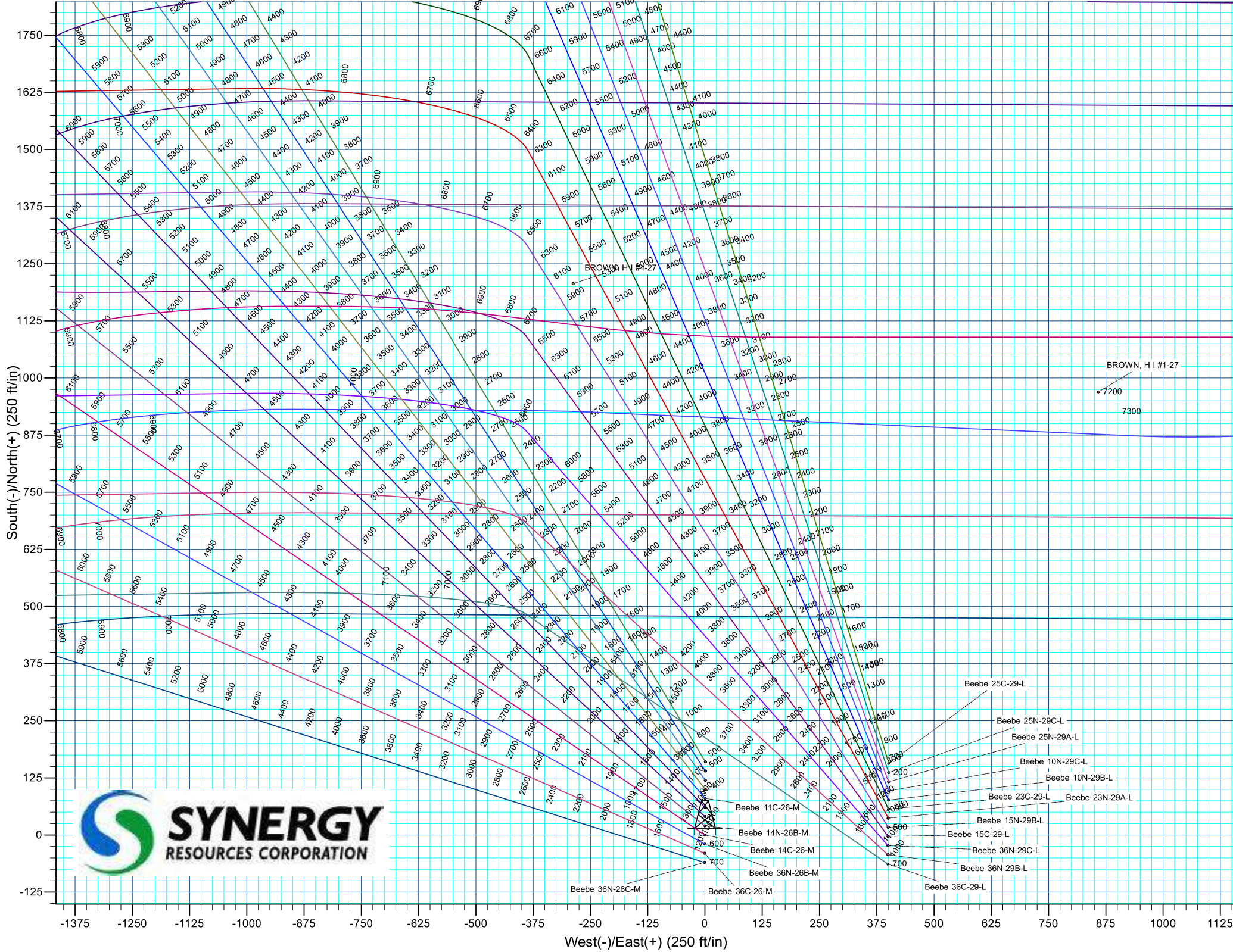
PROJECT DETAILS: SEC. 34-T6N-R66W

Geodetic System: US State Plane 1983  
Datum: North American Datum 1983  
Ellipsoid: GRS 1980  
Zone: Colorado Northern Zone  
Colorado Northern Zone  
System Datum: Mean Sea Level

## CASING DETAILS

TVD	MD	Name	Size
1750.00	1779.47	9 5/8"	9.625







# **Synergy Resources Corporation**

**SEC. 34-T6N-R66W**

**Beebe 3-34 Pad**

**Beebe 14C-26-M**

**OH**

**Plan: Plan #2**

## **Standard Survey Report**

**17 February, 2017**

<b>Company:</b>	Synergy Resources Corporation	<b>Local Co-ordinate Reference:</b>	Well Beebe 14C-26-M
<b>Project:</b>	SEC. 34-T6N-R66W	<b>TVD Reference:</b>	GL 4701 & KB 25 @ 4726.00ft
<b>Site:</b>	Beebe 3-34 Pad	<b>MD Reference:</b>	GL 4701 & KB 25 @ 4726.00ft
<b>Well:</b>	Beebe 14C-26-M	<b>North Reference:</b>	True
<b>Wellbore:</b>	OH	<b>Survey Calculation Method:</b>	Minimum Curvature
<b>Design:</b>	Plan #2	<b>Database:</b>	EDM 5000.14 Single User Db

<b>Project</b>	SEC. 34-T6N-R66W		
<b>Map System:</b>	US State Plane 1983	<b>System Datum:</b>	Mean Sea Level
<b>Geo Datum:</b>	North American Datum 1983		
<b>Map Zone:</b>	Colorado Northern Zone		

Site	Beebe 3-34 Pad				
Site Position:		Northing:	1,405,727.94 ft	Latitude:	40.4447830
From:	Lat/Long	Easting:	3,204,879.83 ft	Longitude:	-104.7639010
Position Uncertainty:	3.28 ft	Slot Radius:	13.200 in	Grid Convergence:	0.48 °

Well						
Beebe 14C-26-M, 382' FNL & 2275' FWL						
Well Position	+N/-S	0.00 ft	Northing:	1,408,018.45 ft	Latitude:	40.4510790
	+E/-W	0.00 ft	Easting:	3,204,494.83 ft	Longitude:	-104.7652160
Position Uncertainty		3.68 ft	Wellhead Elevation:	0.00 ft	Ground Level:	4,701.00 ft

<b>Wellbore</b>	OH				
<b>Magnetics</b>	<b>Model Name</b>	<b>Sample Date</b>	<b>Declination (°)</b>	<b>Dip Angle (°)</b>	<b>Field Strength (nT)</b>
	IGRF200510	12/31/2009	9.03	67.15	53,332

<b>Design</b>	Plan #2				
<b>Audit Notes:</b>					
<b>Version:</b>	<b>Phase:</b>	PLAN	<b>Tie On Depth:</b>	0.00	
<b>Vertical Section:</b>	<b>Depth From (TVD) (ft)</b>	<b>+N/-S (ft)</b>	<b>+E/-W (ft)</b>	<b>Direction (°)</b>	
	0.00	0.00	0.00	79.90	

<b>Survey Tool Program</b>	<b>Date</b>	2/17/2017			
<b>From (ft)</b>	<b>To (ft)</b>	<b>Survey (Wellbore)</b>	<b>Tool Name</b>	<b>Description</b>	
0.00	14,413.57	Plan #2 (OH)	MWD+IFR1	OWSG MWD + IFR1	

<b>Planned Survey</b>									
<b>Measured Depth (ft)</b>	<b>Inclination (°)</b>	<b>Azimuth (°)</b>	<b>Vertical Depth (ft)</b>	<b>+N/-S (ft)</b>	<b>+E/-W (ft)</b>	<b>Vertical Section (ft)</b>	<b>Dogleg Rate (°/100ft)</b>	<b>Build Rate (°/100ft)</b>	<b>Turn Rate (°/100ft)</b>
0.00	0.00	0.00	0.00	0.00	0.00	0.00	0.00	0.00	0.00
100.00	0.00	0.00	100.00	0.00	0.00	0.00	0.00	0.00	0.00
200.00	0.00	0.00	200.00	0.00	0.00	0.00	0.00	0.00	0.00
300.00	0.00	0.00	300.00	0.00	0.00	0.00	0.00	0.00	0.00
400.00	0.00	0.00	400.00	0.00	0.00	0.00	0.00	0.00	0.00
500.00	0.00	0.00	500.00	0.00	0.00	0.00	0.00	0.00	0.00
600.00	0.00	0.00	600.00	0.00	0.00	0.00	0.00	0.00	0.00
<b>Start Build 2.00</b>									
700.00	2.00	304.30	699.98	0.98	-1.44	-1.25	2.00	2.00	0.00
800.00	4.00	304.30	799.84	3.93	-5.76	-4.99	2.00	2.00	0.00
900.00	6.00	304.30	899.45	8.84	-12.96	-11.21	2.00	2.00	0.00

<b>Company:</b>	Synergy Resources Corporation	<b>Local Co-ordinate Reference:</b>	Well Beebe 14C-26-M
<b>Project:</b>	SEC. 34-T6N-R66W	<b>TVD Reference:</b>	GL 4701 & KB 25 @ 4726.00ft
<b>Site:</b>	Beebe 3-34 Pad	<b>MD Reference:</b>	GL 4701 & KB 25 @ 4726.00ft
<b>Well:</b>	Beebe 14C-26-M	<b>North Reference:</b>	True
<b>Wellbore:</b>	OH	<b>Survey Calculation Method:</b>	Minimum Curvature
<b>Design:</b>	Plan #2	<b>Database:</b>	EDM 5000.14 Single User Db

Planned Survey

Measured Depth (ft)	Inclination (°)	Azimuth (°)	Vertical Depth (ft)	+N/-S (ft)	+E/-W (ft)	Vertical Section (ft)	Dogleg Rate (°/100ft)	Build Rate (°/100ft)	Turn Rate (°/100ft)
1,000.00	8.00	304.30	998.70	15.71	-23.03	-19.92	2.00	2.00	0.00
1,100.00	10.00	304.30	1,097.47	24.53	-35.95	-31.09	2.00	2.00	0.00
1,200.00	12.00	304.30	1,195.62	35.28	-51.72	-44.73	2.00	2.00	0.00
1,300.00	14.00	304.30	1,293.06	47.95	-70.30	-60.80	2.00	2.00	0.00
1,400.00	16.00	304.30	1,389.64	62.54	-91.68	-79.29	2.00	2.00	0.00
1,500.00	18.00	304.30	1,485.27	79.01	-115.83	-100.17	2.00	2.00	0.00
1,537.00	18.74	304.30	1,520.38	85.58	-125.46	-108.50	2.00	2.00	0.00
Start 5113.40 hold at 1537.00 MD									
1,600.00	18.74	304.30	1,580.04	96.99	-142.18	-122.97	0.00	0.00	0.00
1,700.00	18.74	304.30	1,674.74	115.10	-168.72	-145.92	0.00	0.00	0.00
1,779.47	18.74	304.30	1,750.00	129.48	-189.82	-164.16	0.00	0.00	0.00
9 5/8"									
1,800.00	18.74	304.30	1,769.44	133.20	-195.26	-168.87	0.00	0.00	0.00
1,900.00	18.74	304.30	1,864.14	151.30	-221.80	-191.82	0.00	0.00	0.00
2,000.00	18.74	304.30	1,958.84	169.41	-248.34	-214.78	0.00	0.00	0.00
2,100.00	18.74	304.30	2,053.54	187.51	-274.88	-237.73	0.00	0.00	0.00
2,200.00	18.74	304.30	2,148.23	205.62	-301.43	-260.68	0.00	0.00	0.00
2,300.00	18.74	304.30	2,242.93	223.72	-327.97	-283.64	0.00	0.00	0.00
2,400.00	18.74	304.30	2,337.63	241.83	-354.51	-306.59	0.00	0.00	0.00
2,500.00	18.74	304.30	2,432.33	259.93	-381.05	-329.54	0.00	0.00	0.00
2,600.00	18.74	304.30	2,527.03	278.04	-407.59	-352.50	0.00	0.00	0.00
2,700.00	18.74	304.30	2,621.73	296.14	-434.13	-375.45	0.00	0.00	0.00
2,800.00	18.74	304.30	2,716.43	314.25	-460.67	-398.40	0.00	0.00	0.00
2,900.00	18.74	304.30	2,811.13	332.35	-487.21	-421.36	0.00	0.00	0.00
3,000.00	18.74	304.30	2,905.82	350.46	-513.75	-444.31	0.00	0.00	0.00
3,100.00	18.74	304.30	3,000.52	368.56	-540.29	-467.26	0.00	0.00	0.00
3,200.00	18.74	304.30	3,095.22	386.66	-566.83	-490.22	0.00	0.00	0.00
3,300.00	18.74	304.30	3,189.92	404.77	-593.37	-513.17	0.00	0.00	0.00
3,400.00	18.74	304.30	3,284.62	422.87	-619.91	-536.12	0.00	0.00	0.00
3,500.00	18.74	304.30	3,379.32	440.98	-646.45	-559.08	0.00	0.00	0.00
3,600.00	18.74	304.30	3,474.02	459.08	-672.99	-582.03	0.00	0.00	0.00
3,700.00	18.74	304.30	3,568.71	477.19	-699.53	-604.98	0.00	0.00	0.00
3,800.00	18.74	304.30	3,663.41	495.29	-726.07	-627.94	0.00	0.00	0.00
3,900.00	18.74	304.30	3,758.11	513.40	-752.61	-650.89	0.00	0.00	0.00
4,000.00	18.74	304.30	3,852.81	531.50	-779.15	-673.84	0.00	0.00	0.00
4,100.00	18.74	304.30	3,947.51	549.61	-805.69	-696.80	0.00	0.00	0.00
4,200.00	18.74	304.30	4,042.21	567.71	-832.23	-719.75	0.00	0.00	0.00
4,300.00	18.74	304.30	4,136.91	585.82	-858.77	-742.70	0.00	0.00	0.00
4,400.00	18.74	304.30	4,231.60	603.92	-885.31	-765.65	0.00	0.00	0.00
4,500.00	18.74	304.30	4,326.30	622.02	-911.85	-788.61	0.00	0.00	0.00
4,600.00	18.74	304.30	4,421.00	640.13	-938.39	-811.56	0.00	0.00	0.00
4,700.00	18.74	304.30	4,515.70	658.23	-964.94	-834.51	0.00	0.00	0.00
4,800.00	18.74	304.30	4,610.40	676.34	-991.48	-857.47	0.00	0.00	0.00

<b>Company:</b>	Synergy Resources Corporation	<b>Local Co-ordinate Reference:</b>	Well Beebe 14C-26-M
<b>Project:</b>	SEC. 34-T6N-R66W	<b>TVD Reference:</b>	GL 4701 & KB 25 @ 4726.00ft
<b>Site:</b>	Beebe 3-34 Pad	<b>MD Reference:</b>	GL 4701 & KB 25 @ 4726.00ft
<b>Well:</b>	Beebe 14C-26-M	<b>North Reference:</b>	True
<b>Wellbore:</b>	OH	<b>Survey Calculation Method:</b>	Minimum Curvature
<b>Design:</b>	Plan #2	<b>Database:</b>	EDM 5000.14 Single User Db

Planned Survey

Measured Depth (ft)	Inclination (°)	Azimuth (°)	Vertical Depth (ft)	+N/-S (ft)	+E/-W (ft)	Vertical Section (ft)	Dogleg Rate (°/100ft)	Build Rate (°/100ft)	Turn Rate (°/100ft)
4,900.00	18.74	304.30	4,705.10	694.44	-1,018.02	-880.42	0.00	0.00	0.00
5,000.00	18.74	304.30	4,799.80	712.55	-1,044.56	-903.37	0.00	0.00	0.00
5,100.00	18.74	304.30	4,894.49	730.65	-1,071.10	-926.33	0.00	0.00	0.00
5,200.00	18.74	304.30	4,989.19	748.76	-1,097.64	-949.28	0.00	0.00	0.00
5,300.00	18.74	304.30	5,083.89	766.86	-1,124.18	-972.23	0.00	0.00	0.00
5,400.00	18.74	304.30	5,178.59	784.97	-1,150.72	-995.19	0.00	0.00	0.00
5,500.00	18.74	304.30	5,273.29	803.07	-1,177.26	-1,018.14	0.00	0.00	0.00
5,600.00	18.74	304.30	5,367.99	821.18	-1,203.80	-1,041.09	0.00	0.00	0.00
5,700.00	18.74	304.30	5,462.69	839.28	-1,230.34	-1,064.05	0.00	0.00	0.00
5,800.00	18.74	304.30	5,557.39	857.39	-1,256.88	-1,087.00	0.00	0.00	0.00
5,900.00	18.74	304.30	5,652.08	875.49	-1,283.42	-1,109.95	0.00	0.00	0.00
6,000.00	18.74	304.30	5,746.78	893.59	-1,309.96	-1,132.91	0.00	0.00	0.00
6,100.00	18.74	304.30	5,841.48	911.70	-1,336.50	-1,155.86	0.00	0.00	0.00
6,200.00	18.74	304.30	5,936.18	929.80	-1,363.04	-1,178.81	0.00	0.00	0.00
6,300.00	18.74	304.30	6,030.88	947.91	-1,389.58	-1,201.77	0.00	0.00	0.00
6,400.00	18.74	304.30	6,125.58	966.01	-1,416.12	-1,224.72	0.00	0.00	0.00
6,500.00	18.74	304.30	6,220.28	984.12	-1,442.66	-1,247.67	0.00	0.00	0.00
6,600.00	18.74	304.30	6,314.97	1,002.22	-1,469.20	-1,270.63	0.00	0.00	0.00
6,650.40	18.74	304.30	6,362.70	1,011.35	-1,482.58	-1,282.19	0.00	0.00	0.00
Start DLS 9.00 TFO 144.64									
6,700.00	15.31	314.12	6,410.13	1,020.40	-1,493.87	-1,291.72	9.00	-6.91	19.80
6,800.00	10.90	349.75	6,507.66	1,038.93	-1,505.05	-1,299.48	9.00	-4.41	35.63
6,900.00	12.78	33.83	6,605.72	1,057.46	-1,500.57	-1,291.81	9.00	1.88	44.07
7,000.00	19.18	57.43	6,701.90	1,075.53	-1,480.53	-1,268.92	9.00	6.40	23.60
7,100.00	27.06	68.65	6,793.84	1,092.68	-1,445.43	-1,231.35	9.00	7.88	11.22
7,200.00	35.45	74.98	6,879.27	1,108.51	-1,396.13	-1,180.04	9.00	8.39	6.33
7,300.00	44.06	79.12	6,956.09	1,122.62	-1,333.84	-1,116.25	9.00	8.61	4.14
7,400.00	52.77	82.13	7,022.41	1,134.66	-1,260.11	-1,041.54	9.00	8.72	3.01
7,500.00	61.55	84.51	7,076.59	1,144.34	-1,176.74	-957.77	9.00	8.78	2.38
7,600.00	70.36	86.52	7,117.29	1,151.42	-1,085.79	-866.99	9.00	8.81	2.01
7,700.00	79.19	88.32	7,143.53	1,155.72	-989.49	-771.43	9.00	8.83	1.80
7,800.00	88.03	90.02	7,154.65	1,157.14	-890.23	-673.45	9.00	8.84	1.70
7,818.63	89.68	90.33	7,155.02	1,157.08	-871.60	-655.12	9.00	8.84	1.67
TOP_Beebe 14C-26-M(752' FSL 1401' FWL)									
7,818.98	89.71	90.34	7,155.02	1,157.08	-871.25	-654.78	9.00	8.84	1.67
LP (752 FSL 1401 FWL)									
7,900.00	89.71	90.34	7,155.43	1,156.60	-790.23	-575.10	0.00	0.00	0.00
7,918.98	89.71	90.34	7,155.53	1,156.49	-771.26	-556.44	0.00	0.00	0.00
Start Turn 2.00									
8,000.00	89.71	91.96	7,155.94	1,154.86	-690.26	-476.98	2.00	0.00	2.00
8,100.00	89.71	93.96	7,156.44	1,149.70	-590.40	-379.57	2.00	0.00	2.00
8,200.00	89.71	95.96	7,156.95	1,141.05	-490.78	-283.02	2.00	0.00	2.00
8,251.98	89.71	97.00	7,157.21	1,135.18	-439.13	-233.20	2.00	0.00	2.00
Start 200.00 hold at 8251.98 MD									

<b>Company:</b>	Synergy Resources Corporation	<b>Local Co-ordinate Reference:</b>	Well Beebe 14C-26-M
<b>Project:</b>	SEC. 34-T6N-R66W	<b>TVD Reference:</b>	GL 4701 & KB 25 @ 4726.00ft
<b>Site:</b>	Beebe 3-34 Pad	<b>MD Reference:</b>	GL 4701 & KB 25 @ 4726.00ft
<b>Well:</b>	Beebe 14C-26-M	<b>North Reference:</b>	True
<b>Wellbore:</b>	OH	<b>Survey Calculation Method:</b>	Minimum Curvature
<b>Design:</b>	Plan #2	<b>Database:</b>	EDM 5000.14 Single User Db

Planned Survey

Measured Depth (ft)	Inclination (°)	Azimuth (°)	Vertical Depth (ft)	+N/-S (ft)	+E/-W (ft)	Vertical Section (ft)	Dogleg Rate (°/100ft)	Build Rate (°/100ft)	Turn Rate (°/100ft)
8,300.00	89.71	97.00	7,157.46	1,129.33	-391.47	-187.30	0.00	0.00	0.00
8,400.00	89.71	97.00	7,157.96	1,117.14	-292.21	-91.73	0.00	0.00	0.00
8,451.98	89.71	97.00	7,158.23	1,110.81	-240.63	-42.05	0.00	0.00	0.00
<b>Start Turn -2.00</b>									
8,500.00	89.71	96.04	7,158.47	1,105.36	-192.91	3.97	2.00	0.00	-2.00
8,600.00	89.71	94.04	7,158.98	1,096.57	-93.31	100.49	2.00	0.00	-2.00
8,700.00	89.71	92.04	7,159.48	1,091.27	6.55	197.86	2.00	0.00	-2.00
8,800.00	89.71	90.04	7,159.99	1,089.46	106.52	295.97	2.00	0.00	-2.00
8,801.97	89.71	90.00	7,160.00	1,089.46	108.49	297.91	2.00	0.00	-2.00
<b>Start 2500.00 hold at 8801.97 MD</b>									
8,900.00	89.71	90.00	7,160.50	1,089.46	206.52	394.42	0.00	0.00	0.00
9,000.00	89.71	90.00	7,161.00	1,089.46	306.52	492.87	0.00	0.00	0.00
9,100.00	89.71	90.00	7,161.51	1,089.46	406.52	591.32	0.00	0.00	0.00
9,200.00	89.71	90.00	7,162.02	1,089.46	506.52	689.76	0.00	0.00	0.00
9,300.00	89.71	90.00	7,162.52	1,089.46	606.52	788.21	0.00	0.00	0.00
9,400.00	89.71	90.00	7,163.03	1,089.46	706.51	886.66	0.00	0.00	0.00
9,500.00	89.71	90.00	7,163.53	1,089.46	806.51	985.11	0.00	0.00	0.00
9,600.00	89.71	90.00	7,164.04	1,089.46	906.51	1,083.56	0.00	0.00	0.00
9,700.00	89.71	90.00	7,164.55	1,089.46	1,006.51	1,182.01	0.00	0.00	0.00
9,800.00	89.71	90.00	7,165.05	1,089.46	1,106.51	1,280.45	0.00	0.00	0.00
9,900.00	89.71	90.00	7,165.56	1,089.46	1,206.51	1,378.90	0.00	0.00	0.00
10,000.00	89.71	90.00	7,166.06	1,089.46	1,306.51	1,477.35	0.00	0.00	0.00
10,100.00	89.71	90.00	7,166.57	1,089.46	1,406.51	1,575.80	0.00	0.00	0.00
10,200.00	89.71	90.00	7,167.08	1,089.46	1,506.50	1,674.25	0.00	0.00	0.00
10,300.00	89.71	90.00	7,167.58	1,089.46	1,606.50	1,772.70	0.00	0.00	0.00
10,400.00	89.71	90.00	7,168.09	1,089.46	1,706.50	1,871.14	0.00	0.00	0.00
10,500.00	89.71	90.00	7,168.60	1,089.46	1,806.50	1,969.59	0.00	0.00	0.00
10,600.00	89.71	90.00	7,169.10	1,089.46	1,906.50	2,068.04	0.00	0.00	0.00
10,700.00	89.71	90.00	7,169.61	1,089.46	2,006.50	2,166.49	0.00	0.00	0.00
10,800.00	89.71	90.00	7,170.11	1,089.46	2,106.50	2,264.94	0.00	0.00	0.00
10,900.00	89.71	90.00	7,170.62	1,089.46	2,206.50	2,363.39	0.00	0.00	0.00
11,000.00	89.71	90.00	7,171.13	1,089.46	2,306.49	2,461.83	0.00	0.00	0.00
11,100.00	89.71	90.00	7,171.63	1,089.46	2,406.49	2,560.28	0.00	0.00	0.00
11,200.00	89.71	90.00	7,172.14	1,089.46	2,506.49	2,658.73	0.00	0.00	0.00
11,300.00	89.71	90.00	7,172.64	1,089.46	2,606.49	2,757.18	0.00	0.00	0.00
11,301.97	89.71	90.00	7,172.65	1,089.46	2,608.46	2,759.12	0.00	0.00	0.00
<b>Start Turn 2.00</b>									
11,400.00	89.71	91.96	7,173.15	1,087.78	2,706.47	2,855.31	2.00	0.00	2.00
11,500.00	89.71	93.96	7,173.66	1,082.62	2,806.33	2,952.72	2.00	0.00	2.00
11,600.00	89.71	95.96	7,174.16	1,073.97	2,905.95	3,049.28	2.00	0.00	2.00
11,601.97	89.71	96.00	7,174.17	1,073.76	2,907.91	3,051.17	2.00	0.00	2.00
<b>Start 850.00 hold at 11601.97 MD</b>									
11,700.00	89.71	96.00	7,174.67	1,063.52	3,005.40	3,145.35	0.00	0.00	0.00
11,800.00	89.71	96.00	7,175.18	1,053.06	3,104.85	3,241.43	0.00	0.00	0.00



<b>Company:</b>	Synergy Resources Corporation	<b>Local Co-ordinate Reference:</b>	Well Beebe 14C-26-M
<b>Project:</b>	SEC. 34-T6N-R66W	<b>TVD Reference:</b>	GL 4701 & KB 25 @ 4726.00ft
<b>Site:</b>	Beebe 3-34 Pad	<b>MD Reference:</b>	GL 4701 & KB 25 @ 4726.00ft
<b>Well:</b>	Beebe 14C-26-M	<b>North Reference:</b>	True
<b>Wellbore:</b>	OH	<b>Survey Calculation Method:</b>	Minimum Curvature
<b>Design:</b>	Plan #2	<b>Database:</b>	EDM 5000.14 Single User Db

Planned Survey

Measured Depth (ft)	Inclination (°)	Azimuth (°)	Vertical Depth (ft)	+N/-S (ft)	+E/-W (ft)	Vertical Section (ft)	Dogleg Rate (°/100ft)	Build Rate (°/100ft)	Turn Rate (°/100ft)
11,900.00	89.71	96.00	7,175.68	1,042.61	3,204.30	3,337.51	0.00	0.00	0.00
12,000.00	89.71	96.00	7,176.19	1,032.16	3,303.75	3,433.58	0.00	0.00	0.00
12,100.00	89.71	96.00	7,176.70	1,021.71	3,403.20	3,529.66	0.00	0.00	0.00
12,200.00	89.71	96.00	7,177.20	1,011.25	3,502.66	3,625.73	0.00	0.00	0.00
12,300.00	89.71	96.00	7,177.71	1,000.80	3,602.11	3,721.81	0.00	0.00	0.00
12,400.00	89.71	96.00	7,178.21	990.35	3,701.56	3,817.88	0.00	0.00	0.00
12,451.97	89.71	96.00	7,178.48	984.92	3,753.24	3,867.81	0.00	0.00	0.00
<b>Start DLS 2.00 TFO -89.95</b>									
12,500.00	89.71	95.04	7,178.72	980.30	3,801.05	3,914.07	2.00	0.00	-2.00
12,600.00	89.71	93.04	7,179.22	973.25	3,900.79	4,011.03	2.00	0.00	-2.00
12,700.00	89.72	91.04	7,179.72	969.69	4,000.72	4,108.79	2.00	0.00	-2.00
12,800.00	89.72	89.04	7,180.21	969.63	4,100.72	4,207.22	2.00	0.00	-2.00
12,838.30	89.72	88.27	7,180.40	970.52	4,139.00	4,245.07	2.00	0.00	-2.00
<b>Start DLS 0.00 TFO 0.00</b>									
12,900.00	89.72	88.27	7,180.70	972.38	4,200.68	4,306.11	0.00	0.00	0.00
13,000.00	89.72	88.27	7,181.19	975.40	4,300.63	4,405.05	0.00	0.00	0.00
13,100.00	89.72	88.27	7,181.68	978.41	4,400.58	4,503.98	0.00	0.00	0.00
13,200.00	89.72	88.27	7,182.16	981.42	4,500.54	4,602.91	0.00	0.00	0.00
13,300.00	89.72	88.27	7,182.65	984.44	4,600.49	4,701.84	0.00	0.00	0.00
13,400.00	89.72	88.27	7,183.13	987.45	4,700.44	4,800.77	0.00	0.00	0.00
13,500.00	89.72	88.27	7,183.62	990.46	4,800.40	4,899.71	0.00	0.00	0.00
13,600.00	89.72	88.27	7,184.10	993.48	4,900.35	4,998.64	0.00	0.00	0.00
13,700.00	89.72	88.27	7,184.58	996.49	5,000.30	5,097.57	0.00	0.00	0.00
13,800.00	89.72	88.27	7,185.06	999.50	5,100.26	5,196.50	0.00	0.00	0.00
13,900.00	89.72	88.27	7,185.54	1,002.52	5,200.21	5,295.44	0.00	0.00	0.00
14,000.00	89.73	88.27	7,186.02	1,005.53	5,300.16	5,394.37	0.00	0.00	0.00
14,100.00	89.73	88.27	7,186.50	1,008.54	5,400.12	5,493.30	0.00	0.00	0.00
14,200.00	89.73	88.27	7,186.98	1,011.55	5,500.07	5,592.23	0.00	0.00	0.00
14,300.00	89.73	88.27	7,187.46	1,014.57	5,600.02	5,691.16	0.00	0.00	0.00
14,400.00	89.73	88.27	7,187.94	1,017.58	5,699.98	5,790.10	0.00	0.00	0.00
14,413.57	89.73	88.27	7,188.00	1,017.99	5,713.54	5,803.52	0.00	0.00	0.00
<b>TD at 14413.57 (627 FSL 2664 FWL) - PBHL_Beebe 14C-26-M(727' FSL 2664' FWL)</b>									

Design Targets

Target Name	Dip Angle (°)	Dip Dir. (°)	TVD (ft)	+N/-S (ft)	+E/-W (ft)	Northing (ft)	Easting (ft)	Latitude	Longitude
TOP_Beebe 14C-26-M(i)	0.00	0.47	7,155.00	1,157.05	-871.60	1,409,168.24	3,203,613.68	40.4542550	-104.7683480
- hit/miss target									
- Shape									
- plan misses target center by 0.03ft at 7818.63ft MD (7155.02 TVD, 1157.08 N, -871.60 E)									
- Point									
PBHL_Beebe 14C-26-M	0.00	0.49	7,188.00	1,117.99	5,713.54	1,409,183.75	3,210,198.91	40.4541460	-104.7446850
- hit/miss target									
- Shape									
- plan misses target center by 100.00ft at 14413.57ft MD (7188.00 TVD, 1017.99 N, 5713.54 E)									
- Point									



<b>Company:</b>	Synergy Resources Corporation	<b>Local Co-ordinate Reference:</b>	Well Beebe 14C-26-M
<b>Project:</b>	SEC. 34-T6N-R66W	<b>TVD Reference:</b>	GL 4701 & KB 25 @ 4726.00ft
<b>Site:</b>	Beebe 3-34 Pad	<b>MD Reference:</b>	GL 4701 & KB 25 @ 4726.00ft
<b>Well:</b>	Beebe 14C-26-M	<b>North Reference:</b>	True
<b>Wellbore:</b>	OH	<b>Survey Calculation Method:</b>	Minimum Curvature
<b>Design:</b>	Plan #2	<b>Database:</b>	EDM 5000.14 Single User Db

Casing Points					
Measured Depth (ft)	Vertical Depth (ft)	Name		Casing Diameter (in)	Hole Diameter (in)
1,779.47	1,750.00	9 5/8"		9.625	13.500

Plan Annotations					
Measured Depth (ft)	Vertical Depth (ft)	Local Coordinates		Comment	
		+N/-S (ft)	+E/-W (ft)		
600	600	0	0	Start Build 2.00	
1537	1520	86	-125	Start 5113.40 hold at 1537.00 MD	
6650	6363	1011	-1483	Start DLS 9.00 TFO 144.64	
7819	7155	1157	-871	LP (752 FSL 1401 FWL)	
7919	7156	1156	-771	Start Turn 2.00	
8252	7157	1135	-439	Start 200.00 hold at 8251.98 MD	
8452	7158	1111	-241	Start Turn -2.00	
8802	7160	1089	108	Start 2500.00 hold at 8801.97 MD	
11,302	7173	1089	2608	Start Turn 2.00	
11,602	7174	1074	2908	Start 850.00 hold at 11601.97 MD	
12,452	7178	985	3753	Start DLS 2.00 TFO -89.95	
12,838	7180	971	4139	Start DLS 0.00 TFO 0.00	
14,414	7188	1018	5714	TD at 14413.57 (627 FSL 2664 FWL)	

Checked By: \_\_\_\_\_ Approved By: \_\_\_\_\_ Date: \_\_\_\_\_