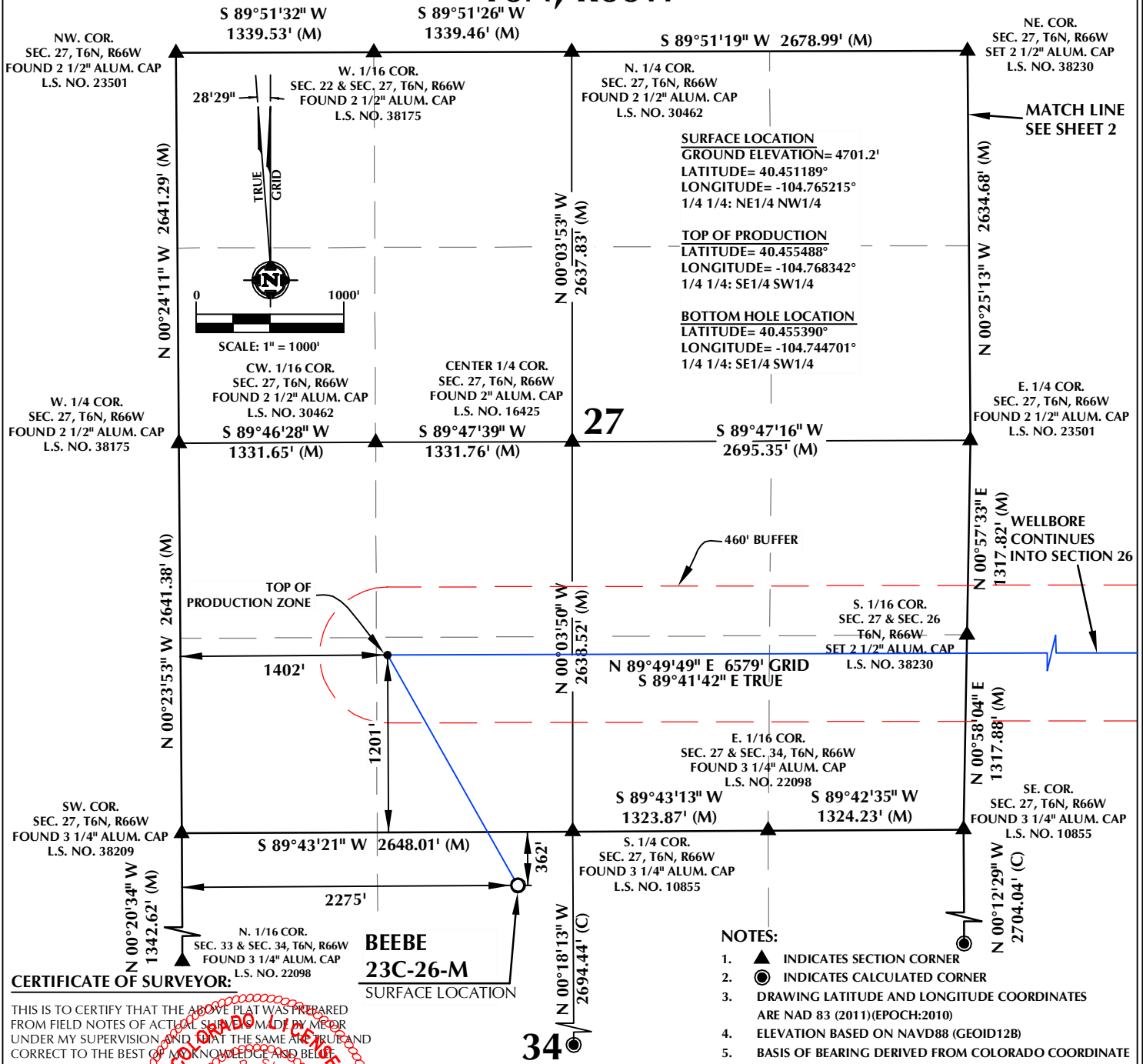


# T6N, R66W



## CERTIFICATE OF SURVEYOR:

THIS IS TO CERTIFY THAT THE ABOVE PLAT WAS PREPARED FROM FIELD NOTES OF ACTUAL SURVEY MADE BY ME OR UNDER MY SUPERVISION, AND THAT THE SAME ARE TRUE AND CORRECT TO THE BEST OF MY KNOWLEDGE AND BELIEF. THIS CERTIFICATE DOES NOT REPRESENT A LAND SURVEY PLAT OR IMPROVEMENT SURVEY PLAT AS DEFINED BY C.R.S. 38-51-302 AND CANNOT BE RELIED UPON TO DETERMINE OWNERSHIP.

**JOHN R. SLAUGH**  
PROFESSIONAL LAND SURVEYOR  
COLORADO REGISTRATION NUMBER 38230  
3/22/17

**NOTICE:**  
ACCORDING TO COLORADO STATE LAW YOU MUST COMMENCE ANY LEGAL ACTION BASED UPON ANY DEFECT IN THIS SURVEY WITHIN THREE YEARS AFTER YOU FIRST DISCOVER SUCH DEFECT. IN NO EVENT MAY ANY ACTION BASED UPON ANY DEFECT IN THIS SURVEY BE COMMENCED MORE THAN TEN YEARS FROM THE DATE ON THE CERTIFICATION SHOWN HEREON.

## WELL DISTANCES:

BUILDING: ±619' E  
BUILDING UNIT: ±690' E  
PUBLIC ROAD: ±346' N  
ABOVE GROUND UTILITY: ±330' N  
RAILROAD: ±840' S  
PROPERTY LINE: ±362' N  
HIGH OCCUPANCY BUILDING UNIT: ±3071' E  
DESIGNATED OUTSIDE ACTIVITY AREA: ±5280' ±

## NOTES:

- ▲ INDICATES SECTION CORNER
- INDICATES CALCULATED CORNER
- DRAWING LATITUDE AND LONGITUDE COORDINATES ARE NAD 83 (2011)(EPOCH:2010)
- ELEVATION BASED ON NAVD88 (GEOID12B)
- BASIS OF BEARING DERIVED FROM COLORADO COORDINATE SYSTEM OF 1983 NORTH ZONE.
- ALL MEASURED DISTANCES ARE GRID. COMBINED SCALE FACTOR: .99974180 CALCULATED FROM THE NE. CORNER OF SECTION 34, T6N, R66W
- OPERATOR: ROB WILSON / PDOP = 1.6
- SEE ADDENDUM TO WELL LOCATION CERTIFICATE FOR EXISTING IMPROVEMENTS WITHIN 500' OF THE WELL PAD.
- WELL FOOTAGES ARE MEASURED AT RIGHT ANGLES TO THE SECTION LINES.
- THE BOTTOM OF HOLE BEARS N89°49'49"E, 6579' FROM THE TOP OF PRODUCTION ZONE.

## WELL PAD - BEEBE 3-34

BEEBE 23C-26-M  
WELL LOCATION CERTIFICATE  
362' FNL & 2275' FWL NENW (SURFACE)  
LOCATED IN SECTION 34  
1201' FSL & 1402' FWL SESW (TOP OF PRODUCTION)  
LOCATED IN SECTION 27  
1180' FSL & 2656' FWL SESW (BOTTOM)  
LOCATED IN SECTION 26  
T6N, R66W, 6TH P.M.  
WELD COUNTY, COLORADO



1625 Broadway, Suite 300  
Denver, Colorado 80202



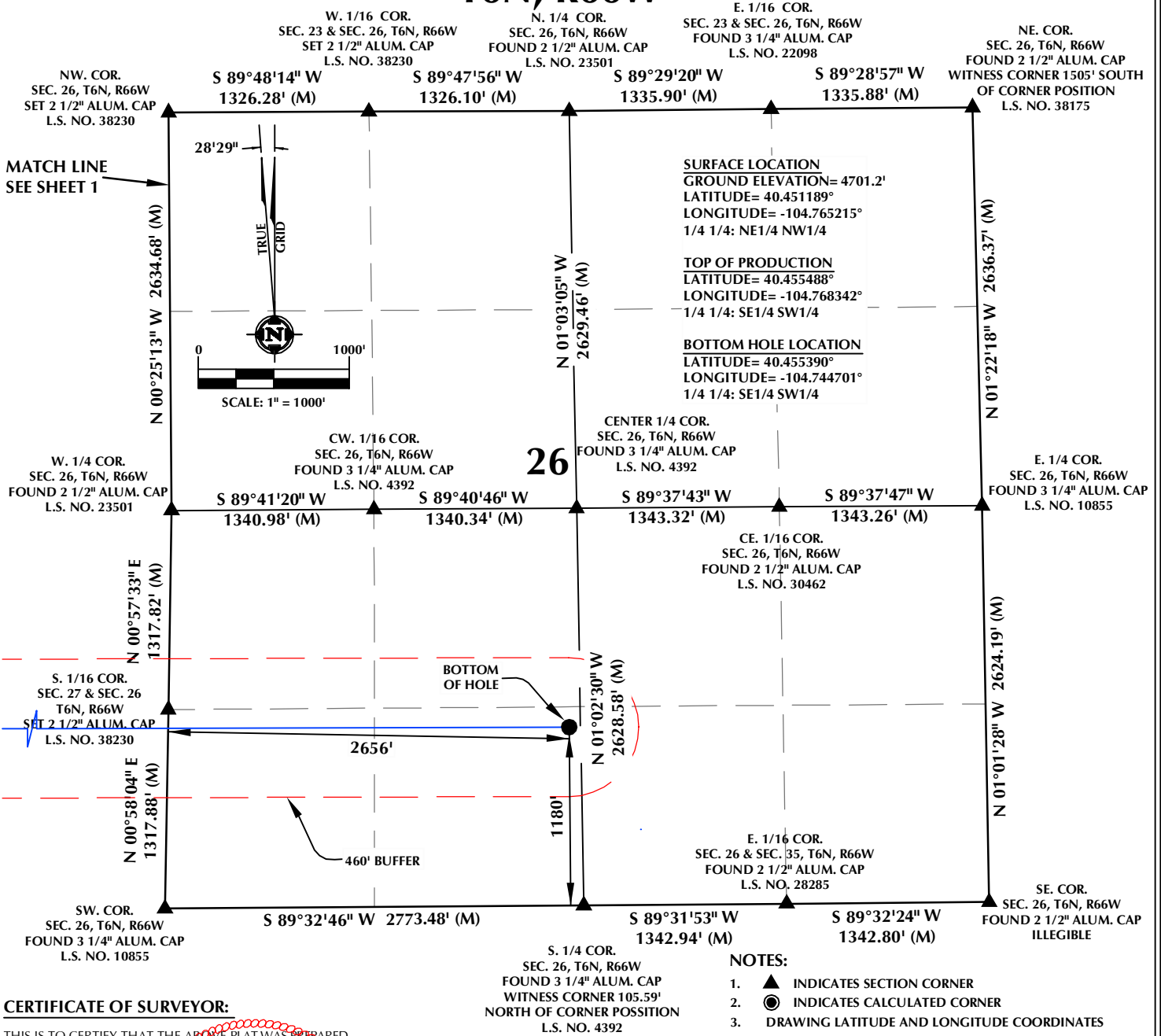
## CONSULTING, LLC

SHERIDAN OFFICE  
1095 Saberton Avenue  
Sheridan, Wyoming 82801  
Phone 307-674-0609

LOVELAND OFFICE  
1635 Foxtrail Drive, Suite 204  
Loveland, Colorado 80538  
Phone 970-776-4331

DRAFTED BY:	LMO	CHECKED BY:	JRS	SHEET NO:
DATE DRAFTED:	12/30/16	DATE SURVEYED:	11/8/16	1
REVISED:	3/22/17	FILE NAME:	16-108	1 OF 2

# T6N, R66W



## CERTIFICATE OF SURVEYOR:

THIS IS TO CERTIFY THAT THE ABOVE PLAT WAS PREPARED FROM FIELD NOTES OF ACTUAL SURVEY MADE BY ME OR UNDER MY SUPERVISION AND THAT THE SAME ARE TRUE AND CORRECT TO THE BEST OF MY KNOWLEDGE AND BELIEF. THIS CERTIFICATE DOES NOT REPRESENT A LAND SURVEY PLAT OR IMPROVEMENT SURVEY PLAT AS DEFINED BY C.R.S. 38-51-302 AND CANNOT BE RELIED UPON TO DETERMINE OWNERSHIP.

*John R. Slough*  
**JOHN R. SLOUGH**  
 PROFESSIONAL LAND SURVEYOR  
 COLORADO REGISTRATION NUMBER 38230  
 3/22/17

**NOTICE:**  
 ACCORDING TO COLORADO STATE LAW YOU MUST COMMENCE ANY LEGAL ACTION BASED UPON ANY DEFECT IN THIS SURVEY WITHIN THREE YEARS AFTER YOU FIRST DISCOVER SUCH DEFECT. IN NO EVENT MAY ANY ACTION BASED UPON ANY DEFECT IN THIS SURVEY BE COMMENCED MORE THAN TEN YEARS FROM THE DATE ON THE CERTIFICATION SHOWN HEREON.

## WELL DISTANCES:

BUILDING: ±619' E  
 BUILDING UNIT: ±690' E  
 PUBLIC ROAD: ±346' N  
 ABOVE GROUND UTILITY: ±330' N  
 RAILROAD: ±840' S  
 PROPERTY LINE: ±362' N  
 HIGH OCCUPANCY BUILDING UNIT: ±3071' E  
 DESIGNATED OUTSIDE ACTIVITY AREA: ±5280'±

## NOTES:

- ▲ INDICATES SECTION CORNER
- ⊙ INDICATES CALCULATED CORNER
- DRAWING LATITUDE AND LONGITUDE COORDINATES ARE NAD 83 (2011)(EPOCH:2010)
- ELEVATION BASED ON NAVD88 (GEOID12B)
- BASIS OF BEARING DERIVED FROM COLORADO COORDINATE SYSTEM OF 1983 NORTH ZONE.
- ALL MEASURED DISTANCES ARE GRID. COMBINED SCALE FACTOR: .99974180 CALCULATED FROM THE NE. CORNER OF SECTION 34, T6N,R66W
- OPERATOR: ROB WILSON / PDOP = 1.6
- SEE ADDENDUM TO WELL LOCATION CERTIFICATE FOR EXISTING IMPROVEMENTS WITHIN 500' OF THE WELL PAD.
- WELL FOOTAGES ARE MEASURED AT RIGHT ANGLES TO THE SECTION LINES.
- THE BOTTOM OF HOLE BEARS N89°49'49"E, 6579' FROM THE TOP OF PRODUCTION ZONE.

## WELL PAD - BEEBE 3-34

BEEBE 23C-26-M  
 WELL LOCATION CERTIFICATE  
 362' FNL & 2275' FWL NENW (SURFACE)  
 LOCATED IN SECTION 34  
 1201' FSL & 1402' FWL SESW (TOP OF PRODUCTION)  
 LOCATED IN SECTION 27  
 1180' FSL & 2656' FWL SESW (BOTTOM)  
 LOCATED IN SECTION 26  
 T6N, R66W, 6TH P.M.  
 WELD COUNTY, COLORADO



1625 Broadway, Suite 300  
 Denver, Colorado 80202



## CONSULTING, LLC

**SHERIDAN OFFICE**  
 1095 Saberton Avenue  
 Sheridan, Wyoming 82801  
 Phone 307-674-0609

**LOVELAND OFFICE**  
 1635 Foxtrail Drive, Suite 204  
 Loveland, Colorado 80538  
 Phone 970-776-4331

DRAFTED BY:	LMO	CHECKED BY:	JRS	SHEET NO:
DATE DRAFTED:	12/30/16	DATE SURVEYED:	11/8/16	2
REVISED:	3/22/17	FILE NAME:	16-108	2 OF 2