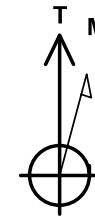




Project: SEC. 34-T6N-R66W  
 Site: Beebe 3-34 Pad  
 Well: Beebe 23C-26-M  
 Wellbore: OH  
 Design: Plan #2



Azimuths to True North  
 Magnetic North: 9.03°

Magnetic Field  
 Strength: 53331.8snT  
 Dip Angle: 67.15°  
 Date: 12/31/2009  
 Model: IGRF200510

#### SECTION DETAILS

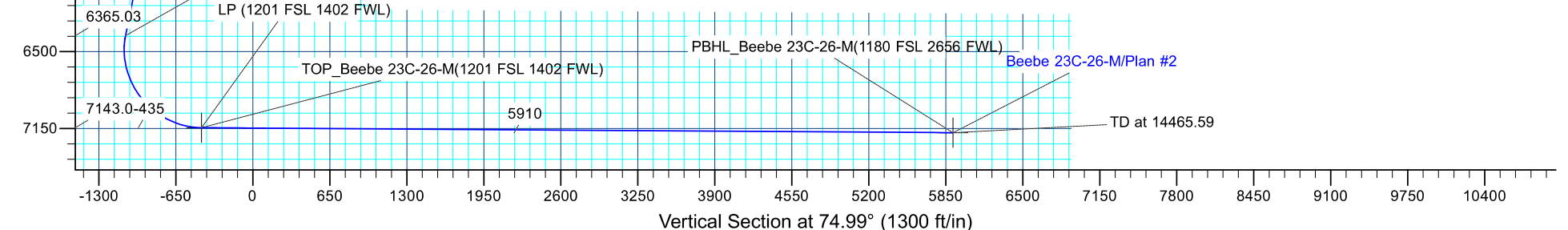
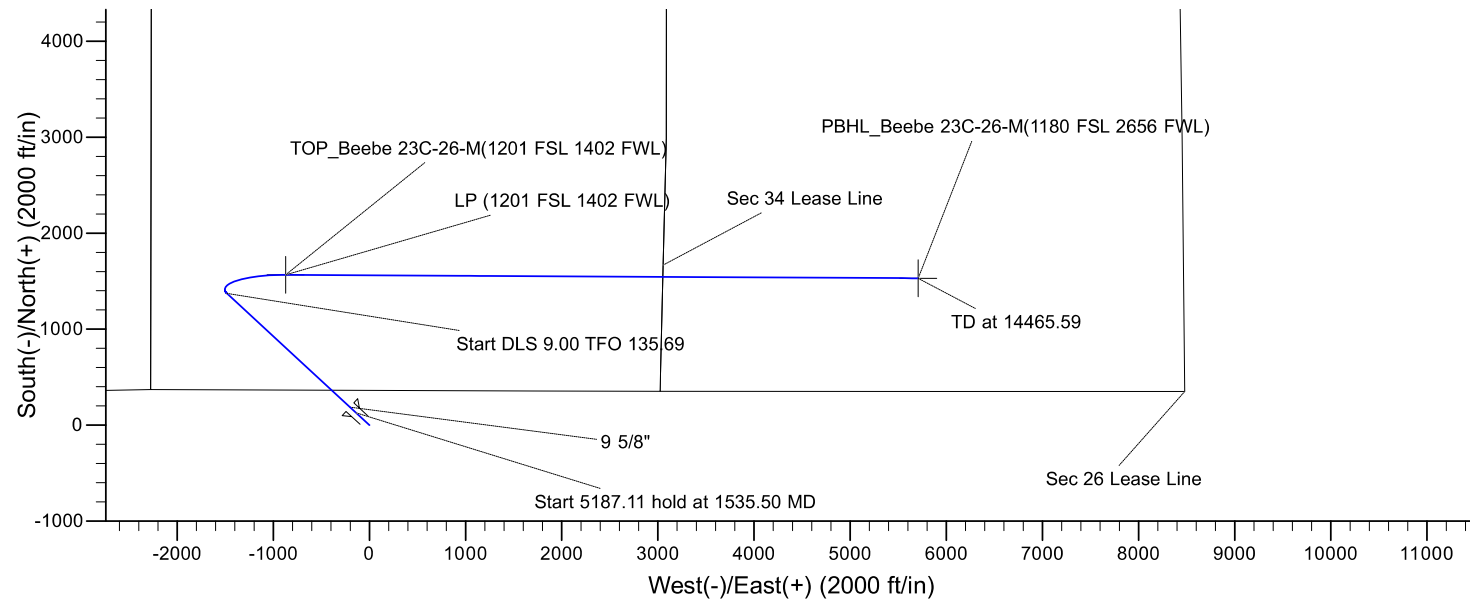
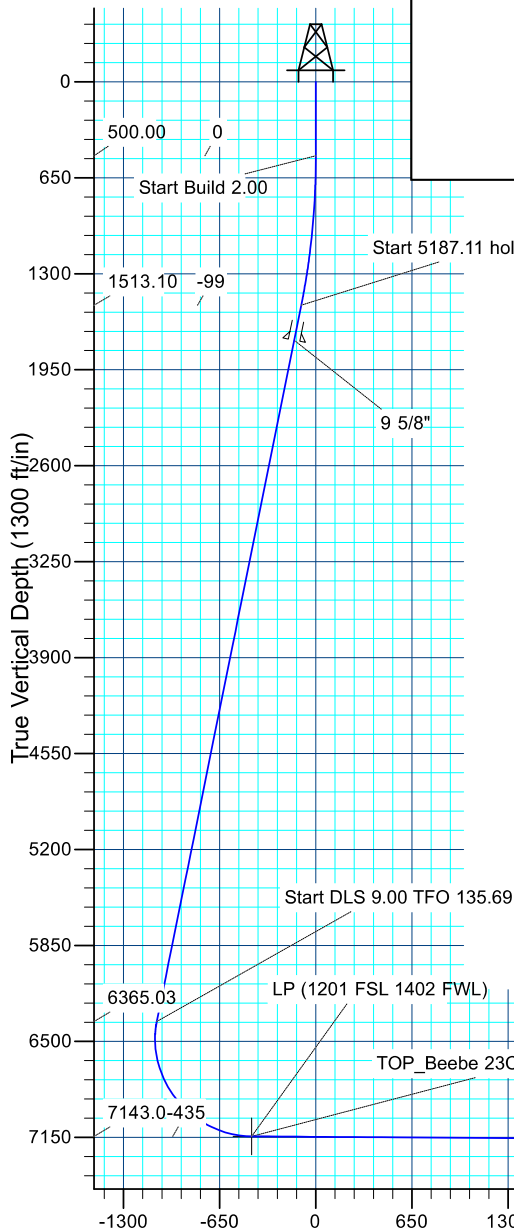
MD	Inc	Azi	TVD	+N/-S	+E/-W	Dleg	TFace	VSect	Target
0.00	0.00	0.00	0.00	0.00	0.00	0.00	0.00	0.00	
500.00	0.00	0.00	500.00	0.00	0.00	0.00	0.00	0.00	
1535.50	20.71	132.80	1513.10	125.78	-135.83	2.00	312.80	-98.61	
6722.61	20.71	132.80	6365.03	1372.12	-1481.75	0.00	0.09	1075.72	
7886.61	89.63	90.31	7143.00	1566.20	-870.05	9.00	135.69	-434.62	
14465.59	89.63	90.31	7185.00	1531.11	5708.70	0.00	0.00	5910.47	PBHL

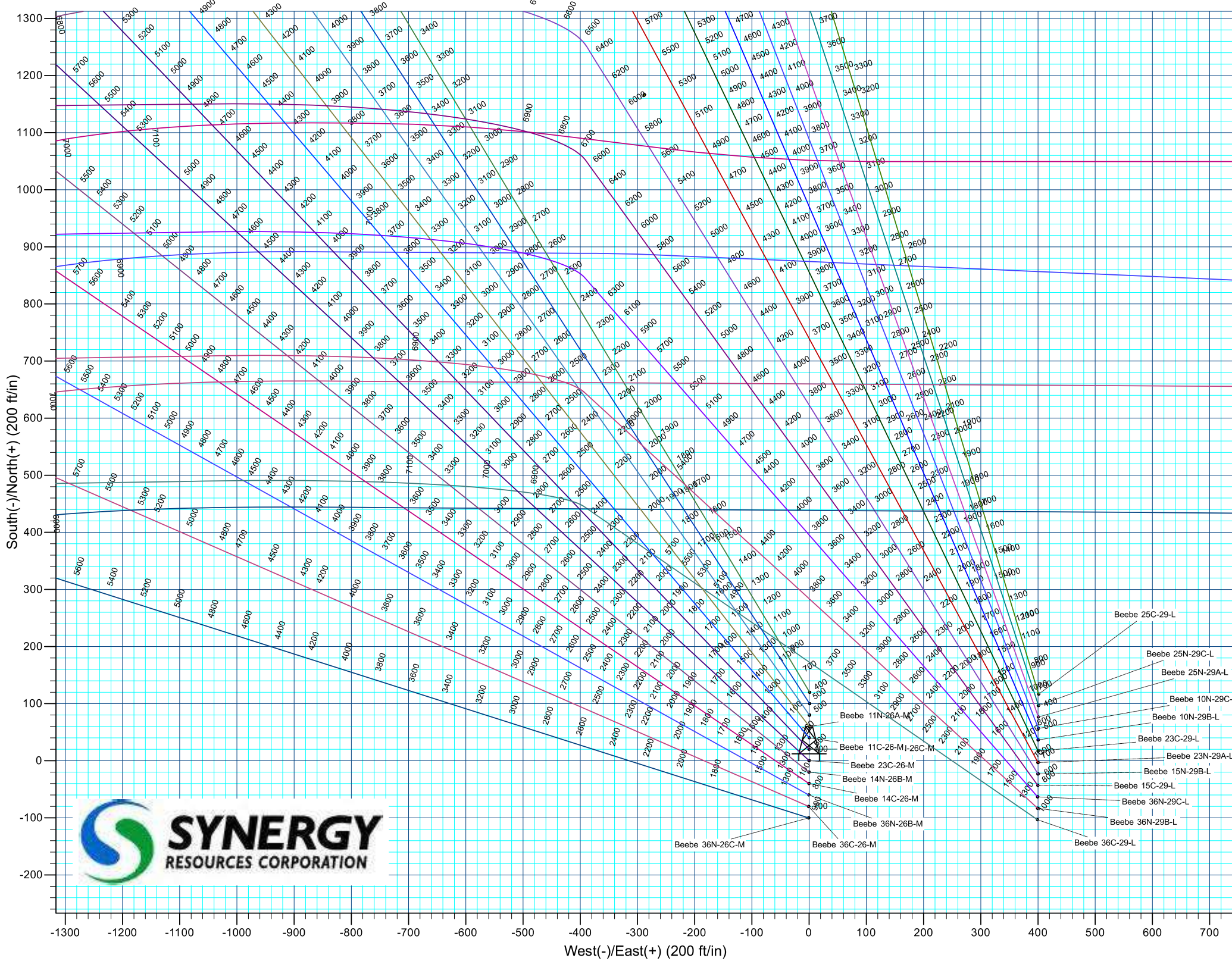
#### PROJECT DETAILS: SEC. 34-T6N-R66W

Geodetic System: US State Plane 1983  
 Datum: North American Datum 1983  
 Ellipsoid: GRS 1980  
 Zone: Colorado Northern Zone  
 Colorado Northern Zone  
 System Datum: Mean Sea Level

#### CASING DETAILS

TVD	MD	Name	Size
1750.00	1788.77	9 5/8"	9.625







# **Synergy Resources Corporation**

**SEC. 34-T6N-R66W**

**Beebe 3-34 Pad**

**Beebe 23C-26-M**

**OH**

**Plan: Plan #2**

## **Standard Survey Report**

**17 February, 2017**

<b>Company:</b>	Synergy Resources Corporation	<b>Local Co-ordinate Reference:</b>	Well Beebe 23C-26-M
<b>Project:</b>	SEC. 34-T6N-R66W	<b>TVD Reference:</b>	GL 4702 & KB 25 @ 4727.00ft
<b>Site:</b>	Beebe 3-34 Pad	<b>MD Reference:</b>	GL 4702 & KB 25 @ 4727.00ft
<b>Well:</b>	Beebe 23C-26-M	<b>North Reference:</b>	True
<b>Wellbore:</b>	OH	<b>Survey Calculation Method:</b>	Minimum Curvature
<b>Design:</b>	Plan #2	<b>Database:</b>	EDM 5000.14 Single User Db

<b>Project</b>	SEC. 34-T6N-R66W		
<b>Map System:</b>	US State Plane 1983	<b>System Datum:</b>	Mean Sea Level
<b>Geo Datum:</b>	North American Datum 1983		
<b>Map Zone:</b>	Colorado Northern Zone		

Site	Beebe 3-34 Pad				
Site Position:		Northing:	1,405,727.94 ft	Latitude:	40.4447830
From:	Lat/Long	Easting:	3,204,879.83 ft	Longitude:	-104.7639010
Position Uncertainty:	3.28 ft	Slot Radius:	13.200 in	Grid Convergence:	0.48 °

Well						
Beebe 23C-26-M, 362' FNL & 2275' FWL						
Well Position	+N/-S	0.00 ft	Northing:	1,408,058.52 ft	Latitude:	40.4511890
	+E/-W	0.00 ft	Easting:	3,204,494.78 ft	Longitude:	-104.7652150
Position Uncertainty		3.28 ft	Wellhead Elevation:	0.00 ft	Ground Level:	4,702.00 ft

<b>Wellbore</b>	OH				
<b>Magnetics</b>	<b>Model Name</b>	<b>Sample Date</b>	<b>Declination (°)</b>	<b>Dip Angle (°)</b>	<b>Field Strength (nT)</b>
	IGRF200510	12/31/2009	9.03	67.15	53,332

<b>Design</b>	Plan #2				
<b>Audit Notes:</b>					
<b>Version:</b>	<b>Phase:</b>	PLAN	<b>Tie On Depth:</b>	0.00	
<b>Vertical Section:</b>	<b>Depth From (TVD) (ft)</b>	<b>+N/-S (ft)</b>	<b>+E/-W (ft)</b>	<b>Direction (°)</b>	
	0.00	0.00	0.00	74.99	

<b>Survey Tool Program</b>	<b>Date</b>	2/17/2017			
<b>From (ft)</b>	<b>To (ft)</b>	<b>Survey (Wellbore)</b>	<b>Tool Name</b>	<b>Description</b>	
0.00	14,465.60	Plan #2 (OH)	MWD+IFR1	OWSG MWD + IFR1	

<b>Planned Survey</b>									
<b>Measured Depth (ft)</b>	<b>Inclination (°)</b>	<b>Azimuth (°)</b>	<b>Vertical Depth (ft)</b>	<b>+N/-S (ft)</b>	<b>+E/-W (ft)</b>	<b>Vertical Section (ft)</b>	<b>Dogleg Rate (°/100ft)</b>	<b>Build Rate (°/100ft)</b>	<b>Turn Rate (°/100ft)</b>
0.00	0.00	0.00	0.00	0.00	0.00	0.00	0.00	0.00	0.00
100.00	0.00	0.00	100.00	0.00	0.00	0.00	0.00	0.00	0.00
200.00	0.00	0.00	200.00	0.00	0.00	0.00	0.00	0.00	0.00
300.00	0.00	0.00	300.00	0.00	0.00	0.00	0.00	0.00	0.00
400.00	0.00	0.00	400.00	0.00	0.00	0.00	0.00	0.00	0.00
500.00	0.00	0.00	500.00	0.00	0.00	0.00	0.00	0.00	0.00
<b>Start Build 2.00</b>									
600.00	2.00	312.80	599.98	1.19	-1.28	-0.93	2.00	2.00	0.00
700.00	4.00	312.80	699.84	4.74	-5.12	-3.72	2.00	2.00	0.00
800.00	6.00	312.80	799.45	10.66	-11.51	-8.36	2.00	2.00	0.00
900.00	8.00	312.80	898.70	18.94	-20.46	-14.85	2.00	2.00	0.00

<b>Company:</b>	Synergy Resources Corporation	<b>Local Co-ordinate Reference:</b>	Well Beebe 23C-26-M
<b>Project:</b>	SEC. 34-T6N-R66W	<b>TVD Reference:</b>	GL 4702 & KB 25 @ 4727.00ft
<b>Site:</b>	Beebe 3-34 Pad	<b>MD Reference:</b>	GL 4702 & KB 25 @ 4727.00ft
<b>Well:</b>	Beebe 23C-26-M	<b>North Reference:</b>	True
<b>Wellbore:</b>	OH	<b>Survey Calculation Method:</b>	Minimum Curvature
<b>Design:</b>	Plan #2	<b>Database:</b>	EDM 5000.14 Single User Db

Planned Survey									
Measured Depth (ft)	Inclination (°)	Azimuth (°)	Vertical Depth (ft)	+N/-S (ft)	+E/-W (ft)	Vertical Section (ft)	Dogleg Rate (°/100ft)	Build Rate (°/100ft)	Turn Rate (°/100ft)
1,000.00	10.00	312.80	997.47	29.57	-31.93	-23.18	2.00	2.00	0.00
1,100.00	12.00	312.80	1,095.62	42.53	-45.93	-33.35	2.00	2.00	0.00
1,200.00	14.00	312.80	1,193.06	57.82	-62.44	-45.33	2.00	2.00	0.00
1,300.00	16.00	312.80	1,289.64	75.40	-81.43	-59.11	2.00	2.00	0.00
1,400.00	18.00	312.80	1,385.27	95.27	-102.88	-74.69	2.00	2.00	0.00
1,500.00	20.00	312.80	1,479.82	117.39	-126.76	-92.03	2.00	2.00	0.00
1,535.50	20.71	312.80	1,513.10	125.78	-135.83	-98.61	2.00	2.00	0.00
Start 5187.11 hold at 1535.50 MD									
1,600.00	20.71	312.80	1,573.43	141.27	-152.56	-110.76	0.00	0.00	0.00
1,700.00	20.71	312.80	1,666.97	165.30	-178.51	-129.59	0.00	0.00	0.00
1,788.77	20.71	312.80	1,750.00	186.63	-201.54	-146.32	0.00	0.00	0.00
9 5/8"									
1,800.00	20.71	312.80	1,760.51	189.33	-204.46	-148.43	0.00	0.00	0.00
1,900.00	20.71	312.80	1,854.05	213.36	-230.40	-167.27	0.00	0.00	0.00
2,000.00	20.71	312.80	1,947.58	237.38	-256.35	-186.11	0.00	0.00	0.00
2,100.00	20.71	312.80	2,041.12	261.41	-282.30	-204.94	0.00	0.00	0.00
2,200.00	20.71	312.80	2,134.66	285.44	-308.25	-223.78	0.00	0.00	0.00
2,300.00	20.71	312.80	2,228.20	309.47	-334.19	-242.62	0.00	0.00	0.00
2,400.00	20.71	312.80	2,321.74	333.49	-360.14	-261.46	0.00	0.00	0.00
2,500.00	20.71	312.80	2,415.27	357.52	-386.09	-280.29	0.00	0.00	0.00
2,600.00	20.71	312.80	2,508.81	381.55	-412.04	-299.13	0.00	0.00	0.00
2,700.00	20.71	312.80	2,602.35	405.58	-437.98	-317.97	0.00	0.00	0.00
2,800.00	20.71	312.80	2,695.89	429.60	-463.93	-336.80	0.00	0.00	0.00
2,900.00	20.71	312.80	2,789.43	453.63	-489.88	-355.64	0.00	0.00	0.00
3,000.00	20.71	312.80	2,882.97	477.66	-515.83	-374.48	0.00	0.00	0.00
3,100.00	20.71	312.80	2,976.50	501.69	-541.77	-393.32	0.00	0.00	0.00
3,200.00	20.71	312.80	3,070.04	525.72	-567.72	-412.15	0.00	0.00	0.00
3,300.00	20.71	312.80	3,163.58	549.74	-593.67	-430.99	0.00	0.00	0.00
3,400.00	20.71	312.80	3,257.12	573.77	-619.62	-449.83	0.00	0.00	0.00
3,500.00	20.71	312.80	3,350.66	597.80	-645.56	-468.67	0.00	0.00	0.00
3,600.00	20.71	312.80	3,444.20	621.83	-671.51	-487.50	0.00	0.00	0.00
3,700.00	20.71	312.80	3,537.73	645.85	-697.46	-506.34	0.00	0.00	0.00
3,800.00	20.71	312.80	3,631.27	669.88	-723.41	-525.18	0.00	0.00	0.00
3,900.00	20.71	312.80	3,724.81	693.91	-749.35	-544.02	0.00	0.00	0.00
4,000.00	20.71	312.80	3,818.35	717.94	-775.30	-562.85	0.00	0.00	0.00
4,100.00	20.71	312.80	3,911.89	741.96	-801.25	-581.69	0.00	0.00	0.00
4,200.00	20.71	312.80	4,005.42	765.99	-827.20	-600.53	0.00	0.00	0.00
4,300.00	20.71	312.80	4,098.96	790.02	-853.14	-619.37	0.00	0.00	0.00
4,400.00	20.71	312.80	4,192.50	814.05	-879.09	-638.20	0.00	0.00	0.00
4,500.00	20.71	312.80	4,286.04	838.07	-905.04	-657.04	0.00	0.00	0.00
4,600.00	20.71	312.80	4,379.58	862.10	-930.99	-675.88	0.00	0.00	0.00
4,700.00	20.71	312.80	4,473.12	886.13	-956.93	-694.71	0.00	0.00	0.00
4,800.00	20.71	312.80	4,566.65	910.16	-982.88	-713.55	0.00	0.00	0.00

<b>Company:</b>	Synergy Resources Corporation	<b>Local Co-ordinate Reference:</b>	Well Beebe 23C-26-M
<b>Project:</b>	SEC. 34-T6N-R66W	<b>TVD Reference:</b>	GL 4702 & KB 25 @ 4727.00ft
<b>Site:</b>	Beebe 3-34 Pad	<b>MD Reference:</b>	GL 4702 & KB 25 @ 4727.00ft
<b>Well:</b>	Beebe 23C-26-M	<b>North Reference:</b>	True
<b>Wellbore:</b>	OH	<b>Survey Calculation Method:</b>	Minimum Curvature
<b>Design:</b>	Plan #2	<b>Database:</b>	EDM 5000.14 Single User Db

Planned Survey

Measured Depth (ft)	Inclination (°)	Azimuth (°)	Vertical Depth (ft)	+N/-S (ft)	+E/-W (ft)	Vertical Section (ft)	Dogleg Rate (°/100ft)	Build Rate (°/100ft)	Turn Rate (°/100ft)
4,900.00	20.71	312.80	4,660.19	934.19	-1,008.83	-732.39	0.00	0.00	0.00
5,000.00	20.71	312.80	4,753.73	958.21	-1,034.78	-751.23	0.00	0.00	0.00
5,100.00	20.71	312.80	4,847.27	982.24	-1,060.72	-770.06	0.00	0.00	0.00
5,200.00	20.71	312.80	4,940.81	1,006.27	-1,086.67	-788.90	0.00	0.00	0.00
5,300.00	20.71	312.80	5,034.35	1,030.30	-1,112.62	-807.74	0.00	0.00	0.00
5,400.00	20.71	312.80	5,127.88	1,054.32	-1,138.57	-826.58	0.00	0.00	0.00
5,500.00	20.71	312.80	5,221.42	1,078.35	-1,164.51	-845.41	0.00	0.00	0.00
5,600.00	20.71	312.80	5,314.96	1,102.38	-1,190.46	-864.25	0.00	0.00	0.00
5,700.00	20.71	312.80	5,408.50	1,126.41	-1,216.41	-883.09	0.00	0.00	0.00
5,800.00	20.71	312.80	5,502.04	1,150.43	-1,242.36	-901.93	0.00	0.00	0.00
5,900.00	20.71	312.80	5,595.57	1,174.46	-1,268.30	-920.76	0.00	0.00	0.00
6,000.00	20.71	312.80	5,689.11	1,198.49	-1,294.25	-939.60	0.00	0.00	0.00
6,100.00	20.71	312.80	5,782.65	1,222.52	-1,320.20	-958.44	0.00	0.00	0.00
6,200.00	20.71	312.80	5,876.19	1,246.54	-1,346.15	-977.28	0.00	0.00	0.00
6,300.00	20.71	312.80	5,969.73	1,270.57	-1,372.09	-996.11	0.00	0.00	0.00
6,400.00	20.71	312.80	6,063.27	1,294.60	-1,398.04	-1,014.95	0.00	0.00	0.00
6,500.00	20.71	312.80	6,156.80	1,318.63	-1,423.99	-1,033.79	0.00	0.00	0.00
6,600.00	20.71	312.80	6,250.34	1,342.65	-1,449.94	-1,052.62	0.00	0.00	0.00
6,700.00	20.71	312.80	6,343.88	1,366.68	-1,475.88	-1,071.46	0.00	0.00	0.00
6,722.61	20.71	312.80	6,365.03	1,372.12	-1,481.75	-1,075.72	0.00	0.00	0.00
<b>Start DLS 9.00 TFO 135.69</b>									
6,800.00	16.43	330.23	6,438.43	1,390.94	-1,497.24	-1,085.81	9.00	-5.53	22.52
6,900.00	14.33	3.74	6,535.03	1,415.61	-1,503.47	-1,085.43	9.00	-2.10	33.52
7,000.00	17.29	35.44	6,631.41	1,440.11	-1,494.03	-1,069.96	9.00	2.97	31.69
7,100.00	23.49	54.47	6,725.21	1,463.85	-1,469.14	-1,039.78	9.00	6.19	19.04
7,200.00	31.02	65.32	6,814.09	1,486.24	-1,429.43	-995.62	9.00	7.54	10.84
7,300.00	39.14	72.14	6,895.89	1,506.72	-1,375.86	-938.58	9.00	8.11	6.82
7,400.00	47.53	76.90	6,968.58	1,524.79	-1,309.77	-870.06	9.00	8.39	4.76
7,500.00	56.07	80.52	7,030.38	1,540.01	-1,232.77	-791.74	9.00	8.54	3.62
7,600.00	64.70	83.48	7,079.76	1,552.00	-1,146.76	-705.57	9.00	8.63	2.95
7,700.00	73.38	86.03	7,115.51	1,560.47	-1,053.86	-613.65	9.00	8.68	2.56
7,800.00	82.08	88.37	7,136.75	1,565.20	-956.36	-518.25	9.00	8.71	2.33
7,886.47	89.62	90.30	7,143.00	1,566.20	-870.19	-434.76	9.00	8.72	2.24
<b>TOP_Beebe 23C-26-M(1201 FSL 1402 FWL)</b>									
7,886.61	89.63	90.31	7,143.00	1,566.20	-870.05	-434.62	9.00	8.72	2.22
<b>LP (1201 FSL 1402 FWL)</b>									
7,900.00	89.63	90.31	7,143.09	1,566.12	-856.66	-421.71	0.00	0.00	0.00
8,000.00	89.63	90.31	7,143.72	1,565.59	-756.67	-325.27	0.00	0.00	0.00
8,100.00	89.63	90.31	7,144.36	1,565.06	-656.67	-228.82	0.00	0.00	0.00
8,200.00	89.63	90.31	7,145.00	1,564.52	-556.67	-132.38	0.00	0.00	0.00
8,300.00	89.63	90.31	7,145.64	1,563.99	-456.68	-35.93	0.00	0.00	0.00
8,400.00	89.63	90.31	7,146.28	1,563.46	-356.68	60.51	0.00	0.00	0.00
8,500.00	89.63	90.31	7,146.92	1,562.92	-256.68	156.95	0.00	0.00	0.00
8,600.00	89.63	90.31	7,147.55	1,562.39	-156.69	253.40	0.00	0.00	0.00

<b>Company:</b>	Synergy Resources Corporation	<b>Local Co-ordinate Reference:</b>	Well Beebe 23C-26-M
<b>Project:</b>	SEC. 34-T6N-R66W	<b>TVD Reference:</b>	GL 4702 & KB 25 @ 4727.00ft
<b>Site:</b>	Beebe 3-34 Pad	<b>MD Reference:</b>	GL 4702 & KB 25 @ 4727.00ft
<b>Well:</b>	Beebe 23C-26-M	<b>North Reference:</b>	True
<b>Wellbore:</b>	OH	<b>Survey Calculation Method:</b>	Minimum Curvature
<b>Design:</b>	Plan #2	<b>Database:</b>	EDM 5000.14 Single User Db

Planned Survey

Measured Depth (ft)	Inclination (°)	Azimuth (°)	Vertical Depth (ft)	+N/-S (ft)	+E/-W (ft)	Vertical Section (ft)	Dogleg Rate (°/100ft)	Build Rate (°/100ft)	Turn Rate (°/100ft)
8,700.00	89.63	90.31	7,148.19	1,561.86	-56.69	349.84	0.00	0.00	0.00
8,800.00	89.63	90.31	7,148.83	1,561.32	43.31	446.29	0.00	0.00	0.00
8,900.00	89.63	90.31	7,149.47	1,560.79	143.30	542.73	0.00	0.00	0.00
9,000.00	89.63	90.31	7,150.11	1,560.26	243.30	639.18	0.00	0.00	0.00
9,100.00	89.63	90.31	7,150.75	1,559.73	343.30	735.62	0.00	0.00	0.00
9,200.00	89.63	90.31	7,151.38	1,559.19	443.29	832.07	0.00	0.00	0.00
9,300.00	89.63	90.31	7,152.02	1,558.66	543.29	928.51	0.00	0.00	0.00
9,400.00	89.63	90.31	7,152.66	1,558.13	643.29	1,024.96	0.00	0.00	0.00
9,500.00	89.63	90.31	7,153.30	1,557.59	743.28	1,121.40	0.00	0.00	0.00
9,600.00	89.63	90.31	7,153.94	1,557.06	843.28	1,217.85	0.00	0.00	0.00
9,700.00	89.63	90.31	7,154.58	1,556.53	943.27	1,314.29	0.00	0.00	0.00
9,800.00	89.63	90.31	7,155.22	1,555.99	1,043.27	1,410.74	0.00	0.00	0.00
9,900.00	89.63	90.31	7,155.85	1,555.46	1,143.27	1,507.18	0.00	0.00	0.00
10,000.00	89.63	90.31	7,156.49	1,554.93	1,243.26	1,603.63	0.00	0.00	0.00
10,100.00	89.63	90.31	7,157.13	1,554.39	1,343.26	1,700.07	0.00	0.00	0.00
10,200.00	89.63	90.31	7,157.77	1,553.86	1,443.26	1,796.52	0.00	0.00	0.00
10,300.00	89.63	90.31	7,158.41	1,553.33	1,543.25	1,892.96	0.00	0.00	0.00
10,400.00	89.63	90.31	7,159.05	1,552.79	1,643.25	1,989.41	0.00	0.00	0.00
10,500.00	89.63	90.31	7,159.68	1,552.26	1,743.25	2,085.85	0.00	0.00	0.00
10,600.00	89.63	90.31	7,160.32	1,551.73	1,843.24	2,182.30	0.00	0.00	0.00
10,700.00	89.63	90.31	7,160.96	1,551.19	1,943.24	2,278.74	0.00	0.00	0.00
10,800.00	89.63	90.31	7,161.60	1,550.66	2,043.24	2,375.19	0.00	0.00	0.00
10,900.00	89.63	90.31	7,162.24	1,550.13	2,143.23	2,471.63	0.00	0.00	0.00
11,000.00	89.63	90.31	7,162.88	1,549.59	2,243.23	2,568.08	0.00	0.00	0.00
11,100.00	89.63	90.31	7,163.51	1,549.06	2,343.23	2,664.52	0.00	0.00	0.00
11,200.00	89.63	90.31	7,164.15	1,548.53	2,443.22	2,760.97	0.00	0.00	0.00
11,300.00	89.63	90.31	7,164.79	1,547.99	2,543.22	2,857.41	0.00	0.00	0.00
11,400.00	89.63	90.31	7,165.43	1,547.46	2,643.22	2,953.86	0.00	0.00	0.00
11,500.00	89.63	90.31	7,166.07	1,546.93	2,743.21	3,050.30	0.00	0.00	0.00
11,600.00	89.63	90.31	7,166.71	1,546.39	2,843.21	3,146.75	0.00	0.00	0.00
11,700.00	89.63	90.31	7,167.34	1,545.86	2,943.21	3,243.19	0.00	0.00	0.00
11,800.00	89.63	90.31	7,167.98	1,545.33	3,043.20	3,339.64	0.00	0.00	0.00
11,900.00	89.63	90.31	7,168.62	1,544.79	3,143.20	3,436.08	0.00	0.00	0.00
12,000.00	89.63	90.31	7,169.26	1,544.26	3,243.20	3,532.53	0.00	0.00	0.00
12,100.00	89.63	90.31	7,169.90	1,543.73	3,343.19	3,628.97	0.00	0.00	0.00
12,200.00	89.63	90.31	7,170.54	1,543.19	3,443.19	3,725.42	0.00	0.00	0.00
12,300.00	89.63	90.31	7,171.18	1,542.66	3,543.18	3,821.86	0.00	0.00	0.00
12,400.00	89.63	90.31	7,171.81	1,542.13	3,643.18	3,918.31	0.00	0.00	0.00
12,500.00	89.63	90.31	7,172.45	1,541.59	3,743.18	4,014.75	0.00	0.00	0.00
12,600.00	89.63	90.31	7,173.09	1,541.06	3,843.17	4,111.20	0.00	0.00	0.00
12,700.00	89.63	90.31	7,173.73	1,540.53	3,943.17	4,207.64	0.00	0.00	0.00
12,800.00	89.63	90.31	7,174.37	1,539.99	4,043.17	4,304.08	0.00	0.00	0.00
12,900.00	89.63	90.31	7,175.01	1,539.46	4,143.16	4,400.53	0.00	0.00	0.00



<b>Company:</b>	Synergy Resources Corporation	<b>Local Co-ordinate Reference:</b>	Well Beebe 23C-26-M
<b>Project:</b>	SEC. 34-T6N-R66W	<b>TVD Reference:</b>	GL 4702 & KB 25 @ 4727.00ft
<b>Site:</b>	Beebe 3-34 Pad	<b>MD Reference:</b>	GL 4702 & KB 25 @ 4727.00ft
<b>Well:</b>	Beebe 23C-26-M	<b>North Reference:</b>	True
<b>Wellbore:</b>	OH	<b>Survey Calculation Method:</b>	Minimum Curvature
<b>Design:</b>	Plan #2	<b>Database:</b>	EDM 5000.14 Single User Db

Planned Survey

Measured Depth (ft)	Inclination (°)	Azimuth (°)	Vertical Depth (ft)	+N/-S (ft)	+E/-W (ft)	Vertical Section (ft)	Dogleg Rate (°/100ft)	Build Rate (°/100ft)	Turn Rate (°/100ft)
13,000.00	89.63	90.31	7,175.64	1,538.93	4,243.16	4,496.97	0.00	0.00	0.00
13,100.00	89.63	90.31	7,176.28	1,538.39	4,343.16	4,593.42	0.00	0.00	0.00
13,200.00	89.63	90.31	7,176.92	1,537.86	4,443.15	4,689.86	0.00	0.00	0.00
13,300.00	89.63	90.31	7,177.56	1,537.33	4,543.15	4,786.31	0.00	0.00	0.00
13,400.00	89.63	90.31	7,178.20	1,536.79	4,643.15	4,882.75	0.00	0.00	0.00
13,500.00	89.63	90.31	7,178.84	1,536.26	4,743.14	4,979.20	0.00	0.00	0.00
13,600.00	89.63	90.31	7,179.47	1,535.73	4,843.14	5,075.64	0.00	0.00	0.00
13,700.00	89.63	90.31	7,180.11	1,535.19	4,943.14	5,172.09	0.00	0.00	0.00
13,800.00	89.63	90.31	7,180.75	1,534.66	5,043.13	5,268.53	0.00	0.00	0.00
13,900.00	89.63	90.31	7,181.39	1,534.13	5,143.13	5,364.98	0.00	0.00	0.00
14,000.00	89.63	90.31	7,182.03	1,533.59	5,243.13	5,461.42	0.00	0.00	0.00
14,100.00	89.63	90.31	7,182.67	1,533.06	5,343.12	5,557.87	0.00	0.00	0.00
14,200.00	89.63	90.31	7,183.30	1,532.53	5,443.12	5,654.31	0.00	0.00	0.00
14,300.00	89.63	90.31	7,183.94	1,531.99	5,543.12	5,750.76	0.00	0.00	0.00
14,400.00	89.63	90.31	7,184.58	1,531.46	5,643.11	5,847.20	0.00	0.00	0.00
14,465.60	89.63	90.31	7,185.00	1,531.11	5,708.70	5,910.47	0.00	0.00	0.00
TD at 14465.59 - PBHL_Beebe 23C-26-M(1180 FSL 2656 FWL)									

Design Targets

Target Name	Dip Angle (°)	Dip Dir. (°)	TVD (ft)	+N/-S (ft)	+E/-W (ft)	Northing (ft)	Easting (ft)	Latitude	Longitude
- hit/miss target									
- Shape									
TOP_Beebe 23C-26-M(	0.00	0.47	7,143.00	1,566.17	-870.19	1,409,617.42	3,203,611.64	40.4554880	-104.7683420
- plan misses target center by 0.03ft at 7886.47ft MD (7143.00 TVD, 1566.20 N, -870.19 E)									
- Point									
PBHL_Beebe 23C-26-M	0.00	0.49	7,185.00	1,531.11	5,708.70	1,409,636.88	3,210,190.60	40.4553900	-104.7447010
- plan hits target center									
- Point									

Casing Points

Measured Depth (ft)	Vertical Depth (ft)	Name	Casing Diameter (in)	Hole Diameter (in)
1,788.77	1,750.00	9 5/8"	9.625	13.500

Plan Annotations

Measured Depth (ft)	Vertical Depth (ft)	Local Coordinates		Comment
		+N/-S (ft)	+E/-W (ft)	
500	500	0	0	Start Build 2.00
1535	1513	126	-136	Start 5187.11 hold at 1535.50 MD
6723	6365	1372	-1482	Start DLS 9.00 TFO 135.69
7887	7143	1566	-870	LP (1201 FSL 1402 FWL)
14,466	7185	1531	5709	TD at 14465.59



<b>Company:</b>	Synergy Resources Corporation	<b>Local Co-ordinate Reference:</b>	Well Beebe 23C-26-M
<b>Project:</b>	SEC. 34-T6N-R66W	<b>TVD Reference:</b>	GL 4702 & KB 25 @ 4727.00ft
<b>Site:</b>	Beebe 3-34 Pad	<b>MD Reference:</b>	GL 4702 & KB 25 @ 4727.00ft
<b>Well:</b>	Beebe 23C-26-M	<b>North Reference:</b>	True
<b>Wellbore:</b>	OH	<b>Survey Calculation Method:</b>	Minimum Curvature
<b>Design:</b>	Plan #2	<b>Database:</b>	EDM 5000.14 Single User Db

Checked By: _____	Approved By: _____	Date: _____
-------------------	--------------------	-------------