

# Synergy Resources

Well Name: **SRC Kiehn 32-4CHZ**

Surface Location: SRC Kiehn Pad Sec.4-T4N-R68W

North American Datum 1983 , US State Plane 1983 , Colorado Northern Zone

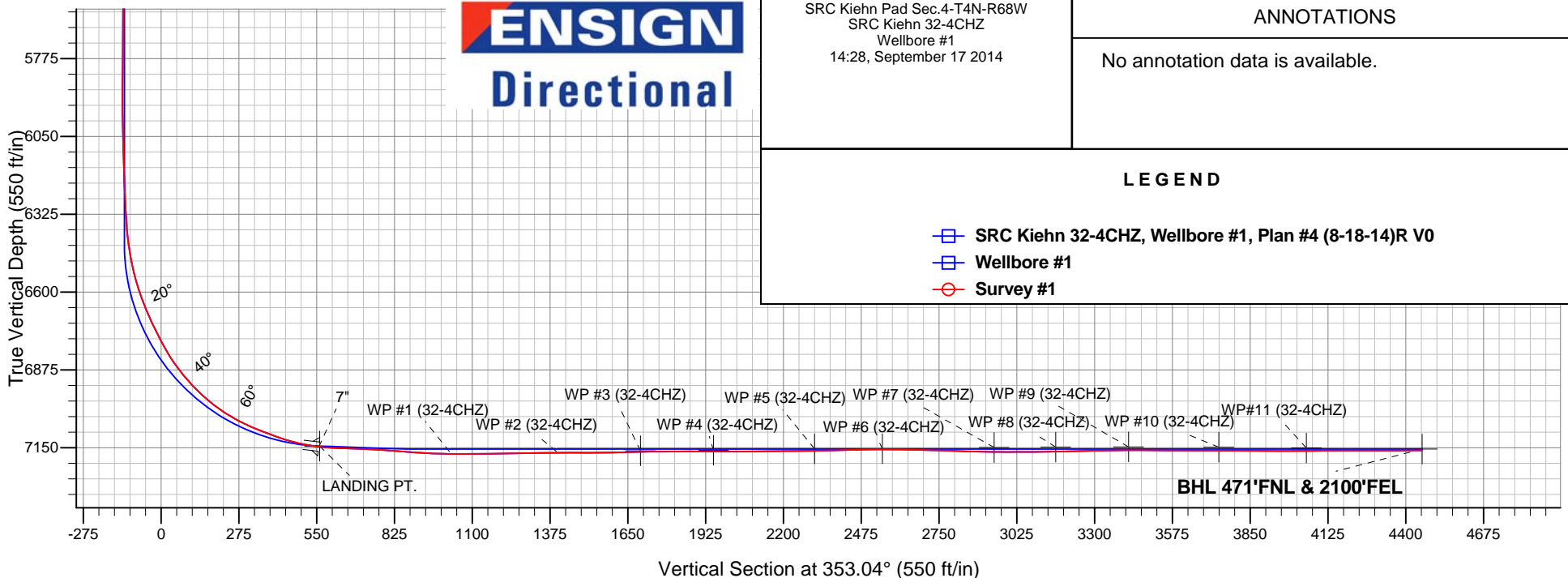
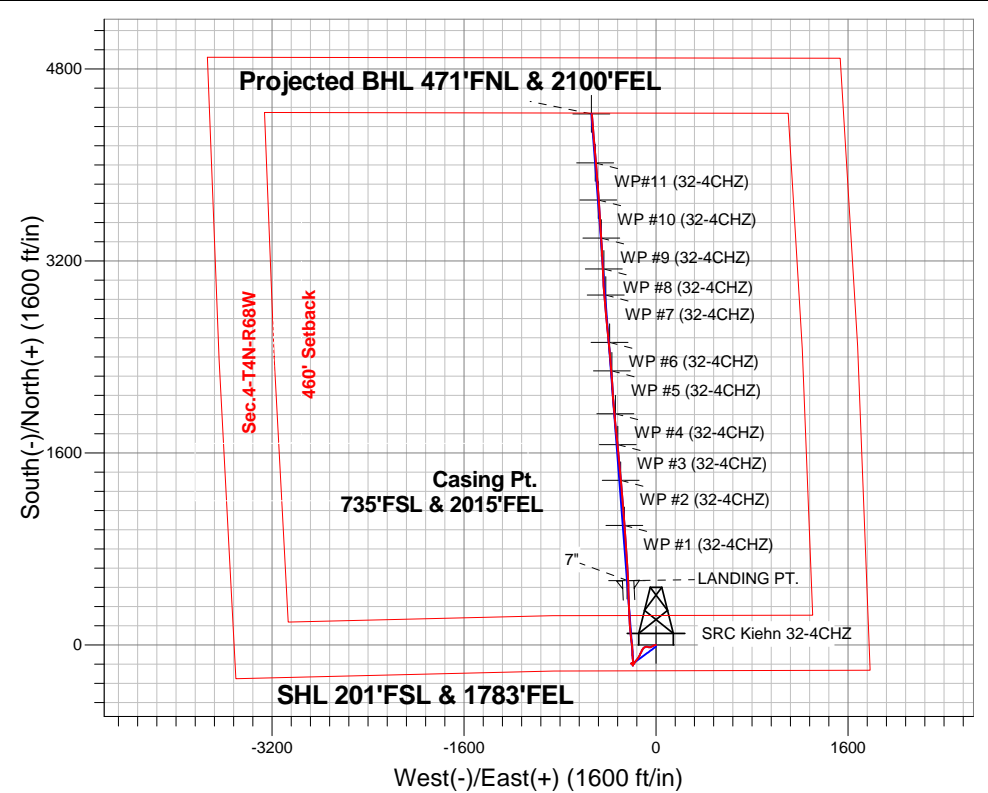
Ground Elevation: 5064.0

+N/-S	+E/-W	Northing	Easting	Latitude	Longitude	Slot
0.0	0.0	1365560.27	3137909.10	40.335808	-105.005299	

Ensign 131 RKB - 13.5' WELL @ 5077.5ft (Ensign 131 RKB - 13.5')

## FINAL SURVEY

Projected Bottom Hole Location  
11413'MD 7160'TVD 4424'N & 535'W of SHL  
90.5 degree Incl @ 355.4 degree AZM



SRC Kiehn Pad Sec.4-T4N-R68W  
SRC Kiehn 32-4CHZ  
Wellbore #1  
14:28, September 17 2014

### ANNOTATIONS

No annotation data is available.

### LEGEND

- SRC Kiehn 32-4CHZ, Wellbore #1, Plan #4 (8-18-14)R V0
- Wellbore #1
- Survey #1



## **Synergy Resources**

**SEC.4-T4N-R68W**

**SRC Kiehn Pad Sec.4-T4N-R68W**

**SRC Kiehn 32-4CHZ**

**Wellbore #1**

**Survey: Survey #1**

## **Standard Survey Report**

**17 September, 2014**

<b>Company:</b>	Synergy Resources	<b>Local Co-ordinate Reference:</b>	Well SRC Kiehn 32-4CHZ
<b>Project:</b>	SEC.4-T4N-R68W	<b>TVD Reference:</b>	WELL @ 5077.5ft (Ensign 131 RKB - 13.5')
<b>Site:</b>	SRC Kiehn Pad Sec.4-T4N-R68W	<b>MD Reference:</b>	WELL @ 5077.5ft (Ensign 131 RKB - 13.5')
<b>Well:</b>	SRC Kiehn 32-4CHZ	<b>North Reference:</b>	True
<b>Wellbore:</b>	Wellbore #1	<b>Survey Calculation Method:</b>	Minimum Curvature
<b>Design:</b>	Wellbore #1	<b>Database:</b>	Landmark

<b>Project</b>	SEC.4-T4N-R68W, Weld, CO		
<b>Map System:</b>	US State Plane 1983	<b>System Datum:</b>	Mean Sea Level
<b>Geo Datum:</b>	North American Datum 1983		Using Well Reference Point
<b>Map Zone:</b>	Colorado Northern Zone		Using geodetic scale factor

<b>Site</b>	SRC Kiehn Pad Sec.4-T4N-R68W		
<b>Site Position:</b>		<b>Northing:</b>	1,365,561.75ft
<b>From:</b>	Lat/Long	<b>Easting:</b>	3,137,974.04ft
<b>Position Uncertainty:</b>	0.0 ft	<b>Slot Radius:</b>	"
		<b>Latitude:</b>	40.335811
		<b>Longitude:</b>	-105.005066
		<b>Grid Convergence:</b>	0.32 °

<b>Well</b>	SRC Kiehn 32-4CHZ		
<b>Well Position</b>	<b>+N/-S</b>	0.0 ft	<b>Northing:</b> 1,365,560.27 ft
	<b>+E/-W</b>	0.0 ft	<b>Easting:</b> 3,137,909.10 ft
<b>Position Uncertainty</b>	0.0 ft	<b>Wellhead Elevation:</b>	ft
		<b>Latitude:</b>	40.335808
		<b>Longitude:</b>	-105.005299
		<b>Ground Level:</b>	5,064.0 ft

<b>Wellbore</b>	Wellbore #1				
<b>Magnetics</b>	<b>Model Name</b>	<b>Sample Date</b>	<b>Declination (°)</b>	<b>Dip Angle (°)</b>	<b>Field Strength (nT)</b>
	IGRF2010	8/18/2014	8.56	66.85	52,736

<b>Design</b>	Wellbore #1				
<b>Audit Notes:</b>					
<b>Version:</b>	1.0	<b>Phase:</b>	ACTUAL	<b>Tie On Depth:</b>	0.0
<b>Vertical Section:</b>	<b>Depth From (TVD) (ft)</b>	<b>+N/-S (ft)</b>	<b>+E/-W (ft)</b>	<b>Direction (°)</b>	
	0.0	0.0	0.0	353.04	

<b>Survey Program</b>	<b>Date</b>	9/17/2014			
<b>From (ft)</b>	<b>To (ft)</b>	<b>Survey (Wellbore)</b>	<b>Tool Name</b>	<b>Description</b>	
72.0	11,413.0	Survey #1 (Wellbore #1)	MWD	MWD - Standard	

<b>Survey</b>										
<b>Measured Depth (ft)</b>	<b>Inclination (°)</b>	<b>Azimuth (°)</b>	<b>Vertical Depth (ft)</b>	<b>+N/-S (ft)</b>	<b>+E/-W (ft)</b>	<b>Vertical Section (ft)</b>	<b>Dogleg Rate (°/100ft)</b>	<b>Build Rate (°/100ft)</b>	<b>Turn Rate (°/100ft)</b>	
0.0	0.00	0.00	0.0	0.0	0.0	0.0	0.00	0.00	0.00	
1.0	0.01	326.00	1.0	0.0	0.0	0.0	0.56	0.56	0.00	
<b>SHL 201'FSL &amp; 1783'FEL</b>										
72.0	0.40	326.00	72.0	0.2	-0.1	0.2	0.56	0.56	0.00	
166.0	1.60	267.50	166.0	0.4	-1.6	0.6	1.52	1.28	-62.23	
259.0	2.90	255.90	258.9	-0.2	-5.2	0.4	1.47	1.40	-12.47	
355.0	4.70	251.50	354.7	-2.0	-11.3	-0.7	1.90	1.88	-4.58	
448.0	5.80	247.10	447.3	-5.1	-19.2	-2.7	1.26	1.18	-4.73	
543.0	6.00	241.00	541.8	-9.4	-28.0	-5.9	0.69	0.21	-6.42	
550.0	6.00	241.00	548.8	-9.7	-28.6	-6.2	0.00	0.00	0.00	
630.0	6.90	237.80	628.3	-14.3	-36.4	-9.8	1.21	1.13	-4.00	
724.0	7.50	254.80	721.5	-18.9	-47.1	-13.1	2.35	0.64	18.09	
818.0	7.70	278.00	814.7	-19.7	-59.2	-12.3	3.25	0.21	24.68	

<b>Company:</b>	Synergy Resources	<b>Local Co-ordinate Reference:</b>	Well SRC Kiehn 32-4CHZ
<b>Project:</b>	SEC.4-T4N-R68W	<b>TVD Reference:</b>	WELL @ 5077.5ft (Ensign 131 RKB - 13.5')
<b>Site:</b>	SRC Kiehn Pad Sec.4-T4N-R68W	<b>MD Reference:</b>	WELL @ 5077.5ft (Ensign 131 RKB - 13.5')
<b>Well:</b>	SRC Kiehn 32-4CHZ	<b>North Reference:</b>	True
<b>Wellbore:</b>	Wellbore #1	<b>Survey Calculation Method:</b>	Minimum Curvature
<b>Design:</b>	Wellbore #1	<b>Database:</b>	Landmark

#### Survey

Measured Depth (ft)	Inclination (°)	Azimuth (°)	Vertical Depth (ft)	+N/-S (ft)	+E/-W (ft)	Vertical Section (ft)	Dogleg Rate (°/100ft)	Build Rate (°/100ft)	Turn Rate (°/100ft)
913.0	7.10	296.10	908.9	-16.2	-70.8	-7.5	2.52	-0.63	19.05
1,008.0	6.80	261.50	1,003.3	-14.4	-81.6	-4.4	4.35	-0.32	-36.42
1,103.0	6.60	243.60	1,097.6	-17.7	-92.1	-6.4	2.20	-0.21	-18.84
1,195.0	6.70	230.60	1,189.0	-23.4	-101.0	-11.0	1.64	0.11	-14.13
1,287.0	7.50	215.30	1,280.3	-31.8	-108.6	-18.4	2.22	0.87	-16.63
1,379.0	5.20	215.30	1,371.8	-40.1	-114.5	-25.9	2.50	-2.50	0.00
1,471.0	4.70	195.20	1,463.4	-47.1	-117.9	-32.5	1.95	-0.54	-21.85
1,563.0	3.50	209.00	1,555.2	-53.2	-120.2	-38.2	1.68	-1.30	15.00
1,655.0	4.30	205.10	1,647.0	-58.8	-123.1	-43.4	0.92	0.87	-4.24
1,747.0	3.50	205.00	1,738.8	-64.4	-125.7	-48.7	0.87	-0.87	-0.11
1,839.0	4.50	220.90	1,830.5	-69.7	-129.3	-53.5	1.61	1.09	17.28
1,932.0	4.70	196.00	1,923.3	-76.1	-132.7	-59.5	2.14	0.22	-26.77
2,024.0	4.30	202.10	2,015.0	-83.0	-135.0	-66.0	0.68	-0.43	6.63
2,117.0	4.00	203.70	2,107.7	-89.2	-137.6	-71.8	0.35	-0.32	1.72
2,210.0	4.20	207.60	2,200.5	-95.1	-140.5	-77.4	0.37	0.22	4.19
2,302.0	4.10	210.40	2,292.2	-101.0	-143.7	-82.8	0.25	-0.11	3.04
2,394.0	3.50	224.30	2,384.0	-105.8	-147.4	-87.2	1.19	-0.65	15.11
2,486.0	4.50	210.00	2,475.8	-110.9	-151.1	-91.8	1.53	1.09	-15.54
2,578.0	5.00	210.00	2,567.5	-117.5	-154.9	-97.9	0.54	0.54	0.00
2,670.0	4.90	222.50	2,659.2	-123.9	-159.6	-103.7	1.18	-0.11	13.59
2,762.0	4.80	226.90	2,750.8	-129.4	-165.1	-108.5	0.42	-0.11	4.78
2,855.0	5.10	210.00	2,843.5	-135.7	-170.0	-114.1	1.59	0.32	-18.17
2,944.0	4.50	212.70	2,932.2	-142.0	-173.8	-119.9	0.72	-0.67	3.03
3,032.0	4.70	214.80	3,019.9	-147.9	-177.8	-125.3	0.30	0.23	2.39
3,122.0	4.50	221.10	3,109.6	-153.6	-182.2	-130.4	0.60	-0.22	7.00
3,211.0	3.40	211.60	3,198.4	-158.5	-185.9	-134.8	1.43	-1.24	-10.67
3,300.0	2.80	222.50	3,287.3	-162.3	-188.7	-138.3	0.94	-0.67	12.25
3,389.0	2.20	223.00	3,376.2	-165.2	-191.4	-140.8	0.67	-0.67	0.56
3,479.0	1.80	177.80	3,466.1	-167.9	-192.5	-143.3	1.76	-0.44	-50.22
3,568.0	0.50	104.50	3,555.1	-169.3	-192.1	-144.8	1.94	-1.46	-82.36
3,657.0	0.10	190.90	3,644.1	-169.5	-191.7	-145.1	0.57	-0.45	97.08
3,746.0	1.30	258.40	3,733.1	-169.8	-192.7	-145.2	1.42	1.35	75.84
3,835.0	1.20	231.30	3,822.1	-170.6	-194.4	-145.8	0.67	-0.11	-30.45
3,925.0	0.80	184.00	3,912.1	-171.8	-195.2	-146.9	0.98	-0.44	-52.56
4,014.0	1.50	70.40	4,001.1	-172.0	-194.1	-147.3	2.20	0.79	-127.64
4,103.0	1.70	19.60	4,090.0	-170.4	-192.6	-145.8	1.56	0.22	-57.08
4,192.0	2.00	349.20	4,179.0	-167.6	-192.4	-143.1	1.14	0.34	-34.16
4,281.0	2.10	327.60	4,267.9	-164.7	-193.6	-140.1	0.87	0.11	-24.27
4,370.0	2.40	312.50	4,356.9	-162.1	-195.9	-137.2	0.74	0.34	-16.97
4,459.0	1.40	331.50	4,445.8	-159.9	-197.7	-134.7	1.31	-1.12	21.35
4,548.0	1.60	312.00	4,534.8	-158.1	-199.2	-132.8	0.61	0.22	-21.91
4,637.0	2.20	299.50	4,623.7	-156.4	-201.6	-130.8	0.82	0.67	-14.04
4,726.0	1.50	275.60	4,712.7	-155.5	-204.2	-129.6	1.15	-0.79	-26.85
4,815.0	0.40	266.40	4,801.7	-155.4	-205.7	-129.3	1.24	-1.24	-10.34
4,904.0	0.80	145.70	4,890.7	-155.9	-205.7	-129.8	1.19	0.45	-135.62
4,993.0	0.70	119.00	4,979.7	-156.7	-204.9	-130.7	0.40	-0.11	-30.00
5,083.0	2.10	97.30	5,069.6	-157.2	-202.7	-131.4	1.64	1.56	-24.11
5,172.0	1.00	99.40	5,158.6	-157.5	-200.4	-132.1	1.24	-1.24	2.36
5,261.0	0.40	158.20	5,247.6	-157.9	-199.5	-132.6	0.97	-0.67	66.07
5,350.0	0.80	268.60	5,336.6	-158.2	-200.0	-132.8	1.14	0.45	124.05
5,440.0	0.50	144.30	5,426.6	-158.5	-200.4	-133.1	1.29	-0.33	-138.11
5,529.0	1.30	108.40	5,515.6	-159.2	-199.2	-133.9	1.06	0.90	-40.34
5,619.0	0.60	214.20	5,605.6	-159.9	-198.5	-134.7	1.75	-0.78	117.56
5,708.0	0.70	117.70	5,694.6	-160.5	-198.3	-135.3	1.09	0.11	-108.43

<b>Company:</b>	Synergy Resources	<b>Local Co-ordinate Reference:</b>	Well SRC Kiehn 32-4CHZ
<b>Project:</b>	SEC.4-T4N-R68W	<b>TVD Reference:</b>	WELL @ 5077.5ft (Ensign 131 RKB - 13.5')
<b>Site:</b>	SRC Kiehn Pad Sec.4-T4N-R68W	<b>MD Reference:</b>	WELL @ 5077.5ft (Ensign 131 RKB - 13.5')
<b>Well:</b>	SRC Kiehn 32-4CHZ	<b>North Reference:</b>	True
<b>Wellbore:</b>	Wellbore #1	<b>Survey Calculation Method:</b>	Minimum Curvature
<b>Design:</b>	Wellbore #1	<b>Database:</b>	Landmark

#### Survey

Measured Depth (ft)	Inclination (°)	Azimuth (°)	Vertical Depth (ft)	+N/-S (ft)	+E/-W (ft)	Vertical Section (ft)	Dogleg Rate (°/100ft)	Build Rate (°/100ft)	Turn Rate (°/100ft)
5,797.0	1.20	98.40	5,783.6	-160.9	-196.9	-135.9	0.66	0.56	-21.69
5,886.0	0.30	203.50	5,872.6	-161.3	-196.0	-136.3	1.47	-1.01	118.09
5,975.0	1.10	57.40	5,961.5	-161.0	-195.4	-136.2	1.53	0.90	-164.16
6,064.0	1.80	39.50	6,050.5	-159.5	-193.8	-134.8	0.93	0.79	-20.11
6,153.0	2.40	35.60	6,139.5	-156.9	-191.8	-132.5	0.69	0.67	-4.38
6,242.0	2.90	22.30	6,228.4	-153.3	-189.9	-129.2	0.89	0.56	-14.94
6,331.0	2.80	357.80	6,317.3	-149.0	-189.1	-125.0	1.36	-0.11	-27.53
6,420.0	6.20	347.80	6,406.0	-142.2	-190.2	-118.1	3.91	3.82	-11.24
6,509.0	11.30	349.10	6,493.9	-128.9	-192.9	-104.6	5.73	5.73	1.46
6,599.0	17.30	356.60	6,581.1	-106.9	-195.3	-82.4	6.96	6.67	8.33
6,687.0	23.10	358.20	6,663.6	-76.5	-196.7	-52.1	6.62	6.59	1.82
6,776.0	26.20	359.10	6,744.5	-39.4	-197.5	-15.2	3.51	3.48	1.01
6,865.0	31.50	352.90	6,822.5	3.4	-200.7	27.6	6.83	5.96	-6.97
6,955.0	39.90	351.50	6,895.5	55.3	-207.9	80.1	9.38	9.33	-1.56
7,044.0	46.70	355.90	6,960.2	115.9	-214.4	141.1	8.36	7.64	4.94
7,133.0	54.90	356.10	7,016.4	184.7	-219.2	209.9	9.22	9.21	0.22
7,222.0	64.40	356.80	7,061.4	261.3	-224.0	286.5	10.70	10.67	0.79
7,312.0	69.20	358.40	7,096.8	343.9	-227.4	368.9	5.58	5.33	1.78
7,401.0	73.20	359.10	7,125.5	428.1	-229.2	452.7	4.56	4.49	0.79
7,487.0	81.90	357.80	7,144.0	512.0	-231.5	536.2	10.22	10.12	-1.51
7,509.0	83.51	357.42	7,146.8	533.8	-232.4	558.0	7.51	7.32	-1.72
7"									
7,569.0	87.90	356.40	7,151.3	593.5	-235.7	617.7	7.51	7.32	-1.70
7,659.0	88.00	357.00	7,154.5	683.3	-240.8	707.4	0.68	0.11	0.67
7,748.0	85.60	355.70	7,159.5	772.0	-246.5	796.1	3.07	-2.70	-1.46
7,837.0	85.70	356.10	7,166.2	860.5	-252.8	884.8	0.46	0.11	0.45
7,927.0	88.10	354.50	7,171.1	950.0	-260.2	974.5	3.20	2.67	-1.78
7,971.6	89.30	355.45	7,172.1	994.4	-264.1	1,019.1	3.44	2.70	2.14
WP #1 (32-4CHZ)									
8,016.0	90.50	356.40	7,172.2	1,038.7	-267.3	1,063.5	3.44	2.70	2.13
8,105.0	90.40	356.10	7,171.5	1,127.5	-273.1	1,152.3	0.36	-0.11	-0.34
8,194.0	90.80	355.90	7,170.5	1,216.3	-279.3	1,241.2	0.50	0.45	-0.22
8,283.0	91.20	355.70	7,169.0	1,305.1	-285.8	1,330.1	0.50	0.45	-0.22
8,349.8	90.30	354.50	7,168.1	1,371.6	-291.5	1,396.8	2.25	-1.35	-1.80
WP #2 (32-4CHZ)									
8,372.0	90.00	354.10	7,168.1	1,393.7	-293.7	1,419.0	2.25	-1.35	-1.80
8,462.0	90.00	354.00	7,168.1	1,483.2	-303.0	1,509.0	0.11	0.00	-0.11
8,550.0	91.20	353.60	7,167.1	1,570.7	-312.5	1,597.0	1.44	1.36	-0.45
8,640.0	91.50	353.80	7,165.0	1,660.1	-322.4	1,687.0	0.40	0.33	0.22
8,647.8	91.37	353.84	7,164.8	1,667.9	-323.3	1,694.7	1.78	-1.69	0.56
WP #3 (32-4CHZ)									
8,729.0	90.00	354.30	7,163.9	1,748.6	-331.6	1,775.9	1.78	-1.69	0.56
8,818.0	90.30	355.40	7,163.6	1,837.3	-339.6	1,864.9	1.28	0.34	1.24
8,905.9	89.61	354.81	7,163.7	1,924.8	-347.1	1,952.7	1.04	-0.79	-0.67
WP #4 (32-4CHZ)									
8,907.0	89.60	354.80	7,163.7	1,925.9	-347.2	1,953.8	1.04	-0.79	-0.67
8,997.0	90.30	355.20	7,163.8	2,015.6	-355.1	2,043.8	0.90	0.78	0.44
9,086.0	90.60	356.30	7,163.1	2,104.4	-361.7	2,132.7	1.28	0.34	1.24
9,175.0	90.30	356.10	7,162.4	2,193.2	-367.6	2,221.5	0.41	-0.34	-0.22
9,264.0	91.40	356.10	7,161.1	2,281.9	-373.6	2,310.4	1.24	1.24	0.00
9,264.1	91.40	356.10	7,161.1	2,282.0	-373.6	2,310.5	0.00	0.00	0.00
WP #5 (32-4CHZ)									
9,354.0	91.40	355.40	7,158.9	2,371.7	-380.3	2,400.3	0.78	0.00	-0.78
9,442.0	91.00	355.40	7,157.0	2,459.4	-387.3	2,488.2	0.45	-0.45	0.00

<b>Company:</b>	Synergy Resources	<b>Local Co-ordinate Reference:</b>	Well SRC Kiehn 32-4CHZ
<b>Project:</b>	SEC.4-T4N-R68W	<b>TVD Reference:</b>	WELL @ 5077.5ft (Ensign 131 RKB - 13.5')
<b>Site:</b>	SRC Kiehn Pad Sec.4-T4N-R68W	<b>MD Reference:</b>	WELL @ 5077.5ft (Ensign 131 RKB - 13.5')
<b>Well:</b>	SRC Kiehn 32-4CHZ	<b>North Reference:</b>	True
<b>Wellbore:</b>	Wellbore #1	<b>Survey Calculation Method:</b>	Minimum Curvature
<b>Design:</b>	Wellbore #1	<b>Database:</b>	Landmark

Survey										
Measured Depth (ft)	Inclination (°)	Azimuth (°)	Vertical Depth (ft)	+N/-S (ft)	+E/-W (ft)	Vertical Section (ft)	Dogleg Rate (°/100ft)	Build Rate (°/100ft)	Turn Rate (°/100ft)	
9,504.0	90.31	354.16	7,156.3	2,521.1	-393.0	2,550.1	2.29	-1.11	-2.00	
WP #6 (32-4CHZ)										
9,532.0	90.00	353.60	7,156.2	2,548.9	-396.0	2,578.1	2.29	-1.11	-2.00	
9,621.0	88.40	353.60	7,157.5	2,637.4	-405.9	2,667.1	1.80	-1.80	0.00	
9,710.0	87.80	354.30	7,160.4	2,725.8	-415.3	2,756.1	1.04	-0.67	0.79	
9,799.0	88.50	355.00	7,163.3	2,814.4	-423.6	2,845.0	1.11	0.79	0.79	
9,888.0	89.30	355.40	7,165.0	2,903.1	-431.0	2,933.9	1.00	0.90	0.45	
9,899.4	89.45	355.64	7,165.1	2,914.4	-431.9	2,945.3	2.50	1.33	2.11	
WP #7 (32-4CHZ)										
9,978.0	90.50	357.30	7,165.2	2,992.9	-436.7	3,023.7	2.50	1.33	2.11	
10,066.0	90.20	356.30	7,164.6	3,080.7	-441.6	3,111.5	1.19	-0.34	-1.14	
10,117.7	90.95	356.99	7,164.1	3,132.4	-444.7	3,163.2	1.97	1.44	1.33	
WP #8 (32-4CHZ)										
10,156.0	91.50	357.50	7,163.3	3,170.6	-446.5	3,201.3	1.97	1.44	1.33	
10,245.0	91.50	357.50	7,161.0	3,259.5	-450.4	3,290.0	0.00	0.00	0.00	
10,334.0	90.70	357.10	7,159.3	3,348.4	-454.6	3,378.8	1.00	-0.90	-0.45	
10,375.5	90.09	356.87	7,159.0	3,389.8	-456.8	3,420.2	1.56	-1.46	-0.56	
WP #9 (32-4CHZ)										
10,423.0	89.40	356.60	7,159.2	3,437.2	-459.5	3,467.6	1.56	-1.46	-0.56	
10,512.0	89.50	356.40	7,160.0	3,526.1	-464.9	3,556.4	0.25	0.11	-0.22	
10,602.0	90.00	356.40	7,160.4	3,615.9	-470.6	3,646.2	0.56	0.56	0.00	
10,691.0	89.80	355.90	7,160.6	3,704.7	-476.5	3,735.1	0.61	-0.22	-0.56	
10,694.4	89.80	355.88	7,160.6	3,708.1	-476.8	3,738.5	0.57	-0.11	-0.56	
WP #10 (32-4CHZ)										
10,780.0	89.70	355.40	7,161.0	3,793.4	-483.3	3,824.0	0.57	-0.11	-0.56	
10,869.0	89.60	355.00	7,161.5	3,882.1	-490.7	3,913.0	0.46	-0.11	-0.45	
10,957.0	90.00	355.20	7,161.8	3,969.8	-498.3	4,000.9	0.51	0.45	0.23	
11,004.6	90.53	355.47	7,161.6	4,017.2	-502.1	4,048.4	1.26	1.12	0.56	
WP#11 (32-4CHZ)										
11,046.0	91.00	355.70	7,161.0	4,058.5	-505.3	4,089.8	1.26	1.12	0.56	
11,135.0	89.70	355.00	7,160.5	4,147.2	-512.5	4,178.7	1.66	-1.46	-0.79	
11,225.0	90.00	355.40	7,160.7	4,236.9	-520.1	4,268.7	0.56	0.33	0.44	
11,314.0	90.40	355.60	7,160.4	4,325.6	-527.0	4,357.6	0.50	0.45	0.22	
11,363.0	90.50	355.40	7,160.0	4,374.5	-530.9	4,406.5	0.46	0.20	-0.41	
11,413.0	90.50	355.40	7,159.6	4,424.3	-534.9	4,456.5	0.00	0.00	0.00	
BHL 470'FNL & 2105'FEL										

Casing Points				
Measured Depth (ft)	Vertical Depth (ft)	Name	Casing Diameter (")	Hole Diameter (")
7,509.0	7,146.8	7"	7	7-1/2

Checked By: \_\_\_\_\_ Approved By: \_\_\_\_\_ Date: \_\_\_\_\_