



WHITING PETROLEUM CORP.
 Project: Weld County, CO
 Site: Sec 7-T10N-R57W
 Well: Horsetail Fed #07G-0642
 Wellbore: Original Hole
 Design: Original Hole



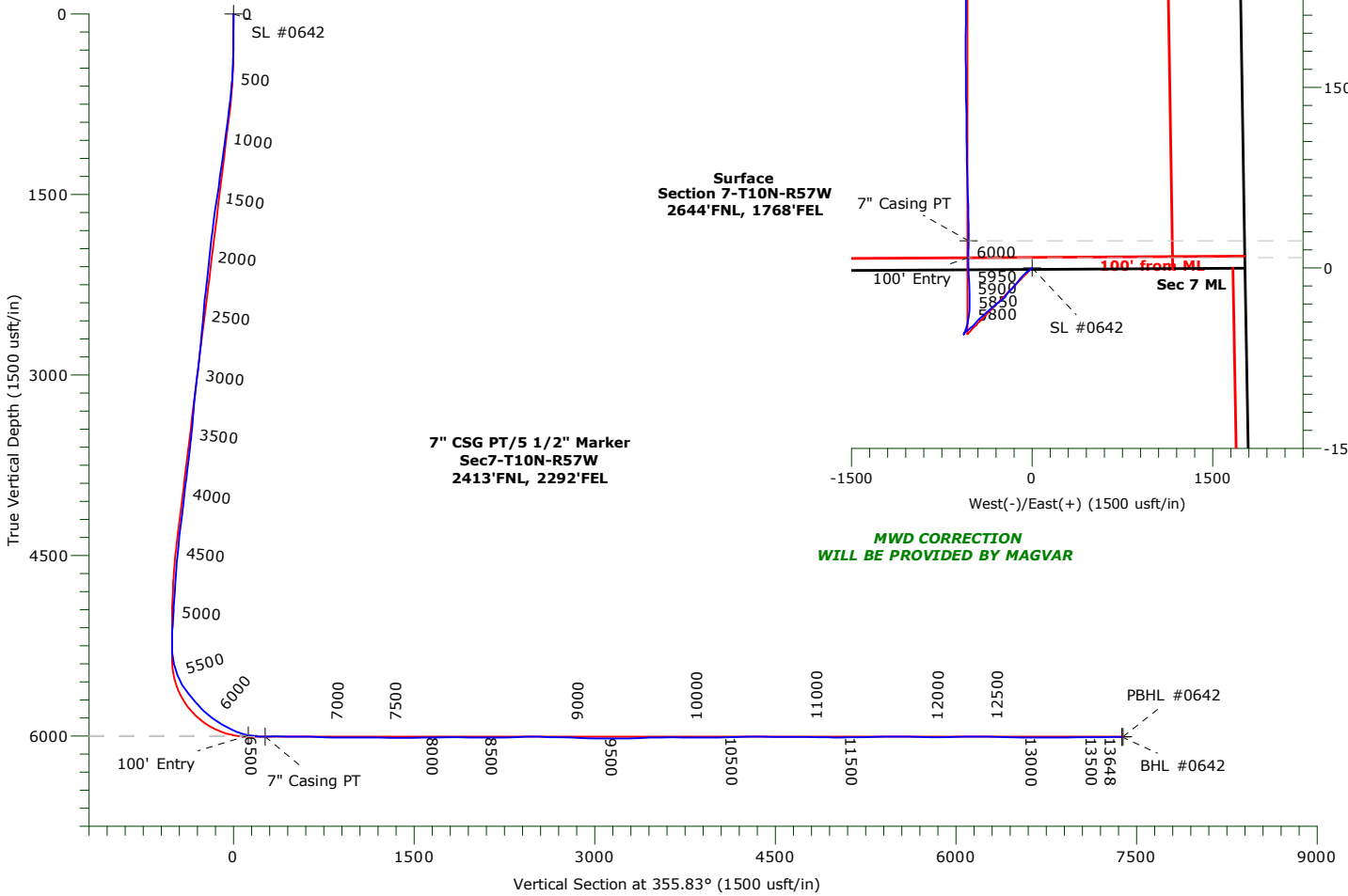
ANNOTATIONS

TVD	MD	+N/-S	+E/-W	Annotation
5994.49	6371.00	85.35	-529.85	100' Entry
6005.37	6512.00	225.59	-526.96	7" Casing PT

BHL
 Sec6-T10N-R57W
 588'FNL, 2309'FEL

LEGEND

- ▭ Horsetail Fed #07G-0642, Original Hole, Plan #4 V0
- ▭ Original Hole



WELLBORE TARGET DETAILS

Name	TVD	+N/-S	+E/-W	Northing	Easting	Latitude	Longitude	Shape
SL #0642	0.00	0.00	0.00	1558332.19	3472574.78	40.853503°N	103.791672°W	Point
100' Entry #0642	5994.49	85.35	-529.85	1558407.31	3472043.38	40.853737°N	103.793587°W	Point
7" Casing PT #0642	6005.37	225.59	-526.96	1558547.58	3472043.57	40.854122°N	103.793577°W	Point
PBHL #0642	6007.00	7369.94	-537.00	1565690.41	3471895.91	40.873731°N	103.793614°W	Point
BHL #0642	6008.65	7358.10	-558.35	1565678.16	3471874.78	40.873698°N	103.793691°W	Point

WHITING PETROLEUM CORP.

Weld County, CO

Sec 7-T10N-R57W

Horsetail Fed #07G-0642

Original Hole

Design: Original Hole

Standard Survey Report

08 February, 2017

Precision Drilling Corporation

Survey Report

Company: WHITING PETROLEUM CORP.	Local Co-ordinate Reference: Well Horsetail Fed #07G-0642
Project: Weld County, CO	TVD Reference: KBE @ 4916.00usft
Site: Sec 7-T10N-R57W	MD Reference: KBE @ 4916.00usft
Well: Horsetail Fed #07G-0642	North Reference: True
Wellbore: Original Hole	Survey Calculation Method: Minimum Curvature
Design: Original Hole	Database: Local2

Project Weld County, CO	
Map System: US State Plane 1983	System Datum: Mean Sea Level
Geo Datum: North American Datum 1983	
Map Zone: Colorado Northern Zone	

Site Sec 7-T10N-R57W		
Site Position:	Northing: 1,558,398.04 usft	Latitude: 40.853825°N
From: Lat/Long	Easting: 3,469,889.54 usft	Longitude: 103.801372°W
Position Uncertainty: 0.00 usft	Slot Radius: 13.20 in	Grid Convergence: 1.10 °

Well Horsetail Fed #07G-0642		
Well Position +N/-S 0.00 usft	Northing: 1,558,332.19 usft	Latitude: 40.853503°N
+E/-W 0.00 usft	Easting: 3,472,574.77 usft	Longitude: 103.791672°W
Position Uncertainty 0.00 usft	Wellhead Elevation: usft	Ground Level: 4,895.00 usft

Wellbore Original Hole					
Magnetics	Model Name	Sample Date	Declination (°)	Dip Angle (°)	Field Strength (nT)
	IGRF2010	1/6/2015	7.88	67.44	53,088

Survey Program		Date 2/8/2017		
From (usft)	To (usft)	Survey (Wellbore)	Tool Name	Description
227.00	13,589.00	Survey #1 (Original Hole)	MWD+IFR1+MS+sag	Fixed:v2:crustal dec & 3-axis correction + sag
13,648.00	13,648.00	Survey #2 (Original Hole)	MWD+IFR1+MS+sag	Fixed:v2:crustal dec & 3-axis correction + sag

Survey										
Measured Depth (usft)	Inclination (°)	Azimuth (°)	Vertical Depth (usft)	+N/-S (usft)	+E/-W (usft)	Vertical Section (usft)	Dogleg Rate (°/100usft)	Build Rate (°/100usft)	Turn Rate (°/100usft)	
0.00	0.00	0.00	0.00	0.00	0.00	0.00	0.00	0.00	0.00	0.00
227.00	0.33	102.20	227.00	-0.14	0.64	-0.18	0.15	0.15	0.00	
322.00	1.79	214.04	321.98	-1.43	0.08	-1.43	2.04	1.54	117.73	
416.00	3.70	232.60	415.87	-4.48	-3.16	-4.24	2.22	2.03	19.74	
511.00	6.14	236.38	510.52	-9.16	-9.82	-8.42	2.59	2.57	3.98	
605.00	8.80	230.07	603.71	-16.56	-19.52	-15.10	2.96	2.83	-6.71	
700.00	11.56	234.68	697.21	-26.73	-32.87	-24.27	3.03	2.91	4.85	
795.00	11.87	230.29	790.23	-38.48	-48.15	-34.87	0.99	0.33	-4.62	
889.00	11.25	225.09	882.33	-51.13	-62.08	-46.48	1.29	-0.66	-5.53	
983.00	11.10	222.97	974.55	-64.22	-74.74	-58.62	0.47	-0.16	-2.26	
1,078.00	10.89	221.26	1,067.80	-77.66	-86.89	-71.13	0.41	-0.22	-1.80	
1,172.00	11.05	219.66	1,160.08	-91.27	-98.50	-83.86	0.37	0.17	-1.70	
1,266.00	10.30	217.99	1,252.46	-104.83	-109.42	-96.59	0.86	-0.80	-1.78	
1,361.00	10.77	217.62	1,345.86	-118.55	-120.07	-109.51	0.50	0.49	-0.39	
1,456.00	11.43	219.12	1,439.08	-132.88	-131.42	-122.98	0.76	0.69	1.58	
1,550.00	11.43	219.89	1,531.21	-147.26	-143.27	-136.45	0.16	0.00	0.82	

Precision Drilling Corporation

Survey Report

Company:	WHITING PETROLEUM CORP.	Local Co-ordinate Reference:	Well Horsetail Fed #07G-0642
Project:	Weld County, CO	TVD Reference:	KBE @ 4916.00usft
Site:	Sec 7-T10N-R57W	MD Reference:	KBE @ 4916.00usft
Well:	Horsetail Fed #07G-0642	North Reference:	True
Wellbore:	Original Hole	Survey Calculation Method:	Minimum Curvature
Design:	Original Hole	Database:	Local2

Survey										
Measured Depth (usft)	Inclination (°)	Azimuth (°)	Vertical Depth (usft)	+N/-S (usft)	+E/-W (usft)	Vertical Section (usft)	Dogleg Rate (°/100usft)	Build Rate (°/100usft)	Turn Rate (°/100usft)	
1,645.00	11.91	221.42	1,624.25	-161.83	-155.80	-150.07	0.60	0.51	1.61	
1,739.00	11.78	226.32	1,716.25	-175.73	-169.15	-162.97	1.08	-0.14	5.21	
1,834.00	10.91	225.07	1,809.39	-188.78	-182.53	-175.00	0.95	-0.92	-1.32	
1,929.00	9.19	221.00	1,902.93	-200.85	-193.87	-186.22	1.96	-1.81	-4.28	
2,023.00	8.47	220.02	1,995.82	-211.82	-203.25	-196.48	0.78	-0.77	-1.04	
2,123.00	7.59	214.07	2,094.84	-222.93	-211.69	-206.95	1.21	-0.88	-5.95	
2,217.00	7.14	207.67	2,188.06	-233.25	-217.88	-216.79	0.99	-0.48	-6.81	
2,312.00	9.08	219.38	2,282.12	-244.27	-225.38	-227.24	2.67	2.04	12.33	
2,407.00	9.94	231.28	2,375.82	-255.20	-236.53	-237.32	2.25	0.91	12.53	
2,501.00	9.33	231.29	2,468.49	-265.04	-248.81	-246.24	0.65	-0.65	0.01	
2,596.00	8.57	231.20	2,562.34	-274.29	-260.33	-254.63	0.80	-0.80	-0.09	
2,691.00	10.35	233.25	2,656.04	-283.83	-272.69	-263.25	1.91	1.87	2.16	
2,785.00	9.98	232.27	2,748.56	-293.87	-285.90	-272.30	0.43	-0.39	-1.04	
2,880.00	9.79	231.47	2,842.15	-303.93	-298.72	-281.41	0.25	-0.20	-0.84	
2,975.00	12.36	229.60	2,935.38	-315.56	-312.79	-291.98	2.73	2.71	-1.97	
3,070.00	11.60	229.81	3,028.31	-328.31	-327.83	-303.60	0.80	-0.80	0.22	
3,164.00	10.59	231.50	3,120.55	-339.79	-341.81	-314.03	1.13	-1.07	1.80	
3,259.00	9.04	230.04	3,214.16	-350.02	-354.36	-323.32	1.65	-1.63	-1.54	
3,353.00	7.89	233.03	3,307.13	-358.64	-365.18	-331.14	1.31	-1.22	3.18	
3,448.00	9.40	225.40	3,401.05	-368.01	-375.91	-339.70	1.99	1.59	-8.03	
3,543.00	8.56	226.18	3,494.89	-378.35	-386.54	-349.24	0.89	-0.88	0.82	
3,638.00	10.82	228.94	3,588.53	-389.11	-398.36	-359.11	2.43	2.38	2.91	
3,732.00	10.86	229.50	3,680.85	-400.65	-411.75	-369.65	0.12	0.04	0.60	
3,827.00	10.43	228.98	3,774.21	-412.11	-425.04	-380.11	0.46	-0.45	-0.55	
3,922.00	11.48	223.26	3,867.48	-424.64	-438.01	-391.66	1.59	1.11	-6.02	
4,017.00	9.89	223.54	3,960.83	-437.44	-450.11	-403.55	1.67	-1.67	0.29	
4,111.00	8.28	224.76	4,053.65	-448.10	-460.44	-413.43	1.72	-1.71	1.30	
4,206.00	10.50	218.77	4,147.38	-459.70	-470.67	-424.26	2.55	2.34	-6.31	
4,301.00	9.63	218.23	4,240.91	-472.69	-481.01	-436.47	0.92	-0.92	-0.57	
4,395.00	10.18	228.62	4,333.52	-484.36	-492.11	-447.30	1.99	0.59	11.05	
4,490.00	9.49	235.30	4,427.12	-494.37	-504.85	-456.35	1.40	-0.73	7.03	
4,584.00	9.50	225.74	4,519.84	-504.20	-516.78	-465.28	1.68	0.01	-10.17	
4,679.00	7.90	230.41	4,613.75	-513.83	-527.42	-474.12	1.84	-1.68	4.92	
4,774.00	7.31	236.57	4,707.91	-521.32	-537.50	-480.86	1.06	-0.62	6.48	
4,868.00	7.07	231.97	4,801.17	-528.18	-547.05	-487.00	0.66	-0.26	-4.89	
4,963.00	6.36	232.03	4,895.52	-535.02	-555.80	-493.19	0.75	-0.75	0.06	
5,058.00	4.32	209.42	4,990.12	-541.37	-561.71	-499.10	3.05	-2.15	-23.80	
5,152.00	3.71	206.21	5,083.88	-547.19	-564.79	-504.67	0.69	-0.65	-3.41	
5,247.00	1.84	191.20	5,178.77	-551.44	-566.44	-508.79	2.10	-1.97	-15.80	
5,281.00	1.69	195.00	5,212.75	-552.46	-566.68	-509.79	0.56	-0.44	11.18	
5,376.00	4.28	22.31	5,307.69	-550.53	-565.70	-507.94	6.27	2.73	-181.78	
5,471.00	14.47	22.47	5,401.29	-536.25	-559.80	-494.12	10.73	10.73	0.17	
5,566.00	23.43	19.76	5,491.06	-507.44	-548.85	-466.19	9.47	9.43	-2.85	
5,660.00	32.48	12.58	5,574.02	-465.12	-537.01	-424.84	10.26	9.63	-7.64	

Precision Drilling Corporation

Survey Report

Company:	WHITING PETROLEUM CORP.	Local Co-ordinate Reference:	Well Horsetail Fed #07G-0642
Project:	Weld County, CO	TVD Reference:	KBE @ 4916.00usft
Site:	Sec 7-T10N-R57W	MD Reference:	KBE @ 4916.00usft
Well:	Horsetail Fed #07G-0642	North Reference:	True
Wellbore:	Original Hole	Survey Calculation Method:	Minimum Curvature
Design:	Original Hole	Database:	Local2

Survey									
Measured Depth (usft)	Inclination (°)	Azimuth (°)	Vertical Depth (usft)	+N/S (usft)	+E/W (usft)	Vertical Section (usft)	Dogleg Rate (°/100usft)	Build Rate (°/100usft)	Turn Rate (°/100usft)
5,755.00	38.57	9.05	5,651.31	-410.92	-526.79	-371.53	6.76	6.41	-3.72
5,850.00	42.31	4.17	5,723.62	-349.75	-519.80	-311.03	5.16	3.94	-5.14
5,945.00	46.02	359.41	5,791.78	-283.64	-517.82	-245.24	5.24	3.91	-5.01
6,039.00	53.54	357.42	5,852.43	-211.95	-519.88	-173.59	8.16	8.00	-2.12
6,135.00	59.53	358.84	5,905.35	-131.95	-522.45	-93.61	6.36	6.24	1.48
6,228.00	65.20	357.58	5,948.47	-49.64	-525.05	-11.32	6.21	6.10	-1.35
6,324.00	72.82	357.76	5,982.83	39.85	-528.69	78.19	7.94	7.94	0.19
6,417.00	83.95	0.73	6,001.53	130.79	-529.84	168.97	12.37	11.97	3.19
6,512.00	91.41	2.74	6,005.37	225.59	-526.96	263.32	8.13	7.85	2.12
6,607.00	89.70	359.02	6,004.45	320.56	-525.50	357.92	4.31	-1.80	-3.92
6,702.00	89.81	357.88	6,004.86	415.52	-528.07	452.82	1.21	0.12	-1.20
6,797.00	90.21	358.95	6,004.84	510.48	-530.70	547.72	1.20	0.42	1.13
6,891.00	88.32	358.32	6,006.05	604.44	-532.94	641.60	2.12	-2.01	-0.67
6,986.00	87.81	357.46	6,009.26	699.32	-536.44	736.48	1.05	-0.54	-0.91
7,081.00	88.65	359.22	6,012.19	794.24	-539.19	831.34	2.05	0.88	1.85
7,176.00	89.99	358.49	6,013.32	889.21	-541.08	926.20	1.61	1.41	-0.77
7,270.00	90.02	359.56	6,013.31	983.19	-542.68	1,020.05	1.14	0.03	1.14
7,365.00	89.29	358.66	6,013.88	1,078.18	-544.16	1,114.89	1.22	-0.77	-0.95
7,460.00	89.60	0.18	6,014.80	1,173.16	-545.12	1,209.70	1.63	0.33	1.60
7,554.00	89.99	359.17	6,015.14	1,267.16	-545.65	1,303.48	1.15	0.41	-1.07
7,649.00	89.42	358.69	6,015.63	1,362.14	-547.43	1,398.34	0.78	-0.60	-0.51
7,743.00	90.81	0.12	6,015.44	1,456.13	-548.40	1,492.16	2.12	1.48	1.52
7,838.00	91.31	359.98	6,013.68	1,551.12	-548.32	1,586.88	0.55	0.53	-0.15
7,933.00	90.64	358.75	6,012.06	1,646.09	-549.37	1,681.68	1.47	-0.71	-1.29
8,028.00	90.13	359.68	6,011.43	1,741.08	-550.68	1,776.52	1.12	-0.54	0.98
8,122.00	89.44	359.52	6,011.78	1,835.08	-551.33	1,870.31	0.75	-0.73	-0.17
8,217.00	89.94	0.92	6,012.29	1,930.07	-550.97	1,965.03	1.56	0.53	1.47
8,312.00	90.22	0.64	6,012.16	2,025.06	-549.67	2,059.67	0.42	0.29	-0.29
8,407.00	89.47	0.20	6,012.42	2,120.06	-548.98	2,154.37	0.92	-0.79	-0.46
8,502.00	90.90	0.34	6,012.11	2,215.06	-548.53	2,249.08	1.51	1.51	0.15
8,596.00	91.81	1.20	6,009.89	2,309.02	-547.27	2,342.70	1.33	0.97	0.91
8,691.00	91.42	359.49	6,007.21	2,403.98	-546.70	2,437.37	1.85	-0.41	-1.80
8,786.00	88.90	356.79	6,006.95	2,498.91	-549.78	2,532.27	3.89	-2.65	-2.84
8,879.00	88.53	355.36	6,009.03	2,591.67	-556.14	2,625.25	1.59	-0.40	-1.54
8,973.00	88.88	358.20	6,011.16	2,685.48	-561.42	2,719.20	3.04	0.37	3.02
9,066.00	87.94	1.41	6,013.74	2,778.43	-561.74	2,811.93	3.60	-1.01	3.45
9,160.00	88.19	1.28	6,016.91	2,872.35	-559.53	2,905.44	0.30	0.27	-0.14
9,253.00	88.16	2.97	6,019.87	2,965.24	-556.09	2,997.83	1.82	-0.03	1.82
9,346.00	89.94	2.97	6,021.41	3,058.10	-551.27	3,090.09	1.91	1.91	0.00
9,439.00	90.02	2.35	6,021.45	3,151.00	-546.95	3,182.43	0.67	0.09	-0.67
9,532.00	91.68	3.11	6,020.07	3,243.88	-542.52	3,274.74	1.96	1.78	0.82
9,625.00	92.54	4.15	6,016.64	3,336.63	-536.64	3,366.82	1.45	0.92	1.12
9,718.00	90.92	3.15	6,013.84	3,429.39	-530.72	3,458.90	2.05	-1.74	-1.08

Precision Drilling Corporation

Survey Report

Company:	WHITING PETROLEUM CORP.	Local Co-ordinate Reference:	Well Horsetail Fed #07G-0642
Project:	Weld County, CO	TVD Reference:	KBE @ 4916.00usft
Site:	Sec 7-T10N-R57W	MD Reference:	KBE @ 4916.00usft
Well:	Horsetail Fed #07G-0642	North Reference:	True
Wellbore:	Original Hole	Survey Calculation Method:	Minimum Curvature
Design:	Original Hole	Database:	Local2

Survey										
Measured Depth (usft)	Inclination (°)	Azimuth (°)	Vertical Depth (usft)	+N/-S (usft)	+E/-W (usft)	Vertical Section (usft)	Dogleg Rate (°/100usft)	Build Rate (°/100usft)	Turn Rate (°/100usft)	
9,811.00	91.13	3.33	6,012.17	3,522.23	-525.47	3,551.11	0.30	0.23	0.19	
9,905.00	89.55	1.57	6,011.61	3,616.13	-521.45	3,644.48	2.52	-1.68	-1.87	
9,998.00	89.63	0.07	6,012.28	3,709.12	-520.12	3,737.12	1.62	0.09	-1.61	
10,092.00	90.06	359.79	6,012.53	3,803.12	-520.23	3,830.88	0.55	0.46	-0.30	
10,185.00	90.03	358.90	6,012.46	3,896.11	-521.30	3,923.70	0.96	-0.03	-0.96	
10,277.00	90.42	359.17	6,012.10	3,988.10	-522.85	4,015.56	0.52	0.42	0.29	
10,371.00	91.25	358.16	6,010.73	4,082.06	-525.04	4,109.43	1.39	0.88	-1.07	
10,464.00	92.36	358.71	6,007.80	4,174.98	-527.57	4,202.29	1.33	1.19	0.59	
10,557.00	89.38	0.65	6,006.39	4,267.95	-528.09	4,295.05	3.82	-3.20	2.09	
10,650.00	89.55	0.75	6,007.26	4,360.94	-526.96	4,387.71	0.21	0.18	0.11	
10,743.00	89.54	0.40	6,008.00	4,453.93	-526.02	4,480.39	0.38	-0.01	-0.38	
10,836.00	90.07	359.82	6,008.31	4,546.93	-525.84	4,573.13	0.84	0.57	-0.62	
10,930.00	90.01	359.20	6,008.25	4,640.93	-526.65	4,666.94	0.66	-0.06	-0.66	
11,023.00	89.54	359.36	6,008.61	4,733.92	-527.82	4,759.77	0.53	-0.51	0.17	
11,116.00	89.18	359.47	6,009.65	4,826.91	-528.77	4,852.58	0.40	-0.39	0.12	
11,208.00	88.48	358.51	6,011.53	4,918.87	-530.39	4,944.42	1.29	-0.76	-1.04	
11,302.00	90.39	359.76	6,012.46	5,012.85	-531.81	5,038.25	2.43	2.03	1.33	
11,395.00	91.24	359.26	6,011.13	5,105.84	-532.60	5,131.05	1.06	0.91	-0.54	
11,487.00	91.05	359.40	6,009.29	5,197.81	-533.68	5,222.86	0.26	-0.21	0.15	
11,581.00	90.75	359.62	6,007.82	5,291.80	-534.48	5,316.65	0.40	-0.32	0.23	
11,676.00	90.84	359.28	6,006.50	5,386.78	-535.39	5,411.45	0.37	0.09	-0.36	
11,771.00	90.40	357.97	6,005.47	5,481.75	-537.67	5,506.33	1.45	-0.46	-1.38	
11,866.00	89.13	356.26	6,005.86	5,576.62	-542.45	5,601.30	2.24	-1.34	-1.80	
11,960.00	88.38	358.64	6,007.90	5,670.50	-546.63	5,695.24	2.65	-0.80	2.53	
12,055.00	88.75	0.30	6,010.28	5,765.46	-547.51	5,790.01	1.79	0.39	1.75	
12,150.00	90.96	0.96	6,010.52	5,860.45	-546.47	5,884.67	2.43	2.33	0.69	
12,244.00	90.94	0.40	6,008.97	5,954.43	-545.35	5,978.32	0.60	-0.02	-0.60	
12,339.00	91.09	0.07	6,007.28	6,049.41	-544.96	6,073.03	0.38	0.16	-0.35	
12,434.00	91.01	359.35	6,005.54	6,144.39	-545.44	6,167.79	0.76	-0.08	-0.76	
12,528.00	88.74	358.31	6,005.75	6,238.37	-547.36	6,261.65	2.66	-2.41	-1.11	
12,623.00	88.85	359.06	6,007.74	6,333.32	-549.54	6,356.51	0.80	0.12	0.79	
12,718.00	88.74	359.16	6,009.74	6,428.29	-551.02	6,451.34	0.16	-0.12	0.11	
12,813.00	87.88	358.24	6,012.54	6,523.22	-553.17	6,546.18	1.33	-0.91	-0.97	
12,907.00	89.46	359.58	6,014.73	6,617.17	-554.96	6,640.01	2.20	1.68	1.43	
13,002.00	90.51	359.91	6,014.75	6,712.17	-555.38	6,734.79	1.16	1.11	0.35	
13,097.00	90.52	359.35	6,013.90	6,807.16	-556.00	6,829.57	0.59	0.01	-0.59	
13,192.00	90.70	358.38	6,012.89	6,902.14	-557.88	6,924.43	1.04	0.19	-1.02	
13,286.00	90.91	0.54	6,011.56	6,996.12	-558.76	7,018.23	2.31	0.22	2.30	
13,381.00	90.78	0.50	6,010.16	7,091.11	-557.90	7,112.90	0.14	-0.14	-0.04	
13,476.00	90.34	0.03	6,009.24	7,186.10	-557.46	7,207.61	0.68	-0.46	-0.49	
13,571.00	90.19	359.71	6,008.80	7,281.10	-557.68	7,302.38	0.37	-0.16	-0.34	
13,589.00	90.10	359.47	6,008.75	7,299.10	-557.81	7,320.34	1.42	-0.50	-1.33	
13,648.00	90.10	359.47	6,008.65	7,358.10	-558.35	7,379.22	0.00	0.00	0.00	

Precision Drilling Corporation

Survey Report

Company:	WHITING PETROLEUM CORP.	Local Co-ordinate Reference:	Well Horsetail Fed #07G-0642
Project:	Weld County, CO	TVD Reference:	KBE @ 4916.00usft
Site:	Sec 7-T10N-R57W	MD Reference:	KBE @ 4916.00usft
Well:	Horsetail Fed #07G-0642	North Reference:	True
Wellbore:	Original Hole	Survey Calculation Method:	Minimum Curvature
Design:	Original Hole	Database:	Local2

Survey									
Measured Depth (usft)	Inclination (°)	Azimuth (°)	Vertical Depth (usft)	+N/-S (usft)	+E/-W (usft)	Vertical Section (usft)	Dogleg Rate (°/100usft)	Build Rate (°/100usft)	Turn Rate (°/100usft)

Design Targets									
Target Name	Dip Angle (°)	Dip Dir. (°)	TVD (usft)	+N/-S (usft)	+E/-W (usft)	Northing (usft)	Easting (usft)	Latitude	Longitude
SL #0642 - hit/miss target - Shape	0.00	0.00	0.00	0.00	0.00	1,558,332.19	3,472,574.77	40.853503°N	103.791672°W
- actual wellpath hits target center									
- Point									
100' Entry #0642 - actual wellpath hits target center - Point	0.00	0.00	5,994.49	85.35	-529.85	1,558,407.32	3,472,043.38	40.853737°N	103.793588°W
7" Casing PT #0642 - actual wellpath hits target center - Point	0.00	0.00	6,005.37	225.59	-526.96	1,558,547.58	3,472,043.57	40.854122°N	103.793577°W
PBHL #0642 - actual wellpath misses target center by 24.48usft at 13648.00usft MD (6008.65 TVD, 7358.10 N, -558.35 E) - Point	0.00	0.00	6,007.00	7,369.94	-537.00	1,565,690.41	3,471,895.91	40.873731°N	103.793614°W
BHL #0642 - actual wellpath misses target center by 0.01usft at 13648.00usft MD (6008.65 TVD, 7358.10 N, -558.35 E) - Point	0.00	0.00	6,008.65	7,358.10	-558.35	1,565,678.17	3,471,874.78	40.873698°N	103.793691°W

Design Annotations					
Measured Depth (usft)	Vertical Depth (usft)	Local Coordinates		Comment	
		+N/-S (usft)	+E/-W (usft)		
6,371.00	5,994.49	85.35	-529.85	100' Entry	
6,512.00	6,005.37	225.59	-526.96	7" Casing PT	

Checked By: _____ Approved By: _____ Date: _____