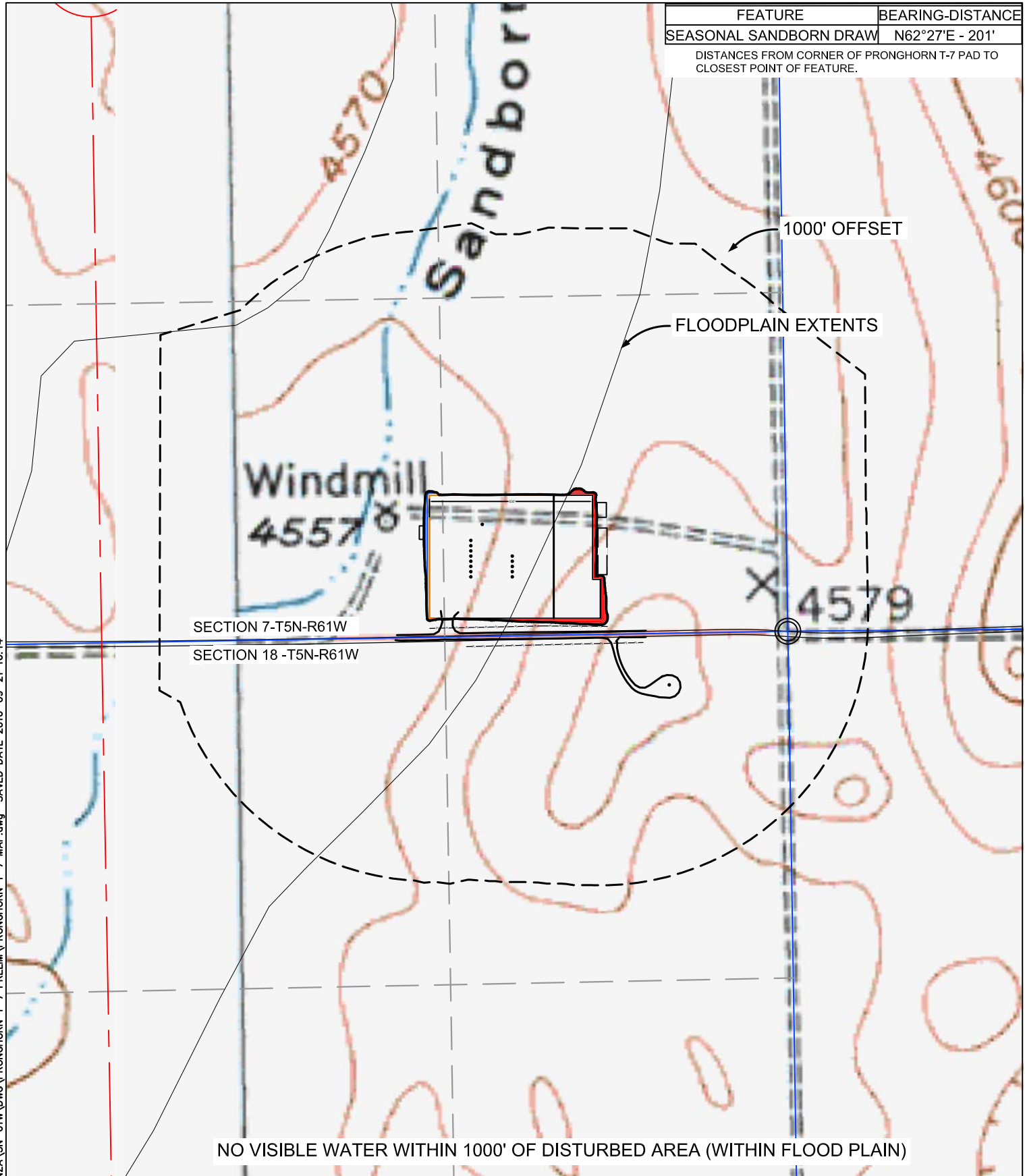


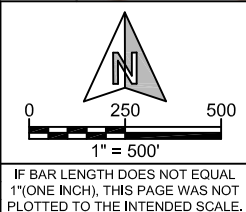
Z:\PROJECTS\1319-01_BONANZA\5N-61W\DWG\PRONGHORN T-7 PRELIM\PRONGHORN T-7 MAP.dwg SAVED DATE 2016-09-21 16:14

FEATURE	BEARING-DISTANCE
SEASONAL SANDBORN DRAW	N62°27'E - 201'
DISTANCES FROM CORNER OF PRONGHORN T-7 PAD TO CLOSEST POINT OF FEATURE.	



WILLIAM H. SMITH & ASSOCIATES, Inc.
155 N. 1st Street
Lander, WY 82520
Phone: 307-335-5646

Drawn By: MAM	Checked By: DAF
Job No.: 15043	Date: 09/20/16
Revision:	



HYDROLOGY MAP

PRONGHORN T-7 PAD
SE $\frac{1}{4}$ SE $\frac{1}{4}$, SECTION 7,
T.5N., R.61W., 6th PM
WELD COUNTY, COLORADO

BONANZA CREEK

410 17th Street
Denver, CO 80202
(720) 440-6100

SHEET

1

OF

1