

Attachment D

Sensitive Area Determination

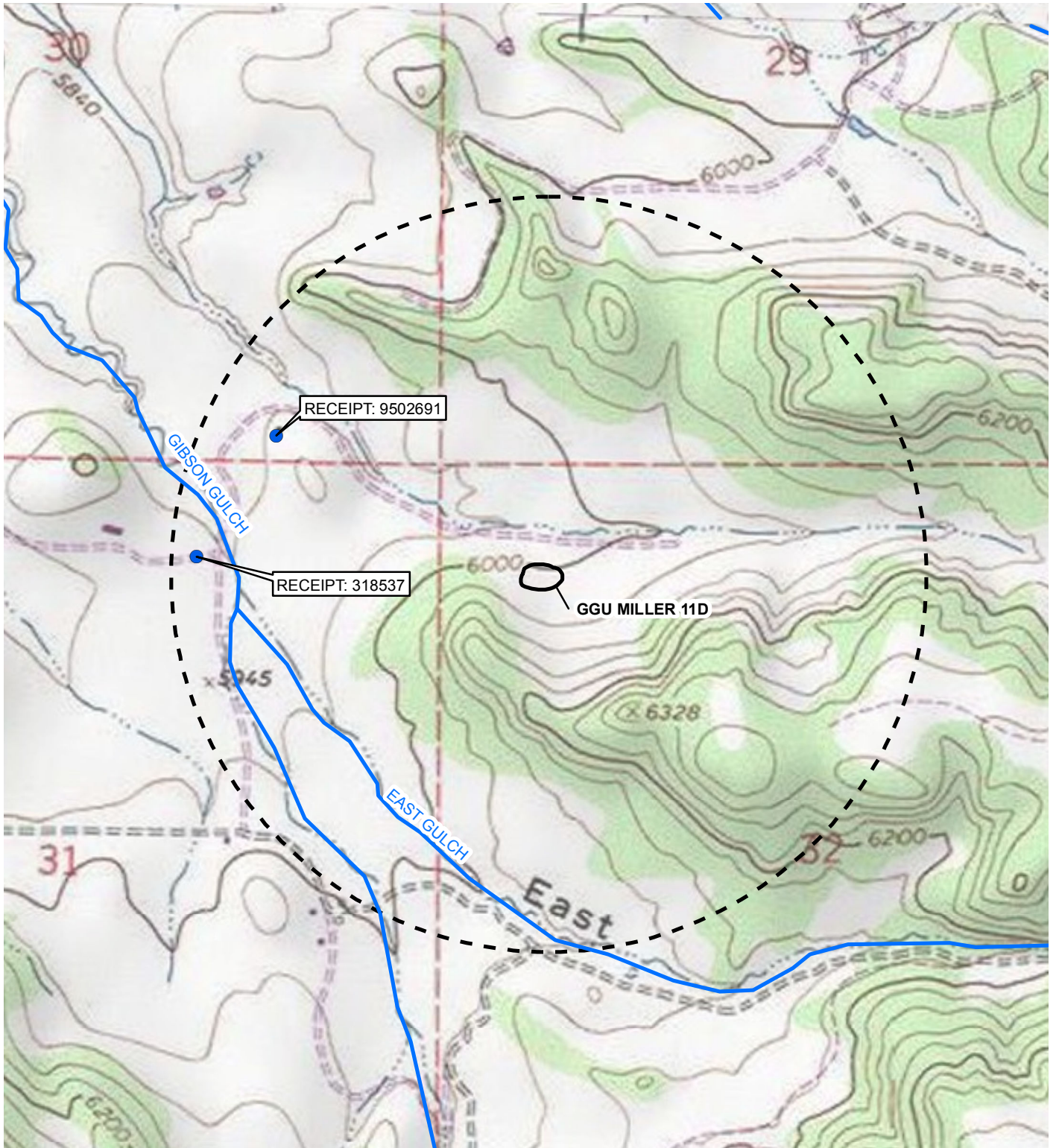


IMAGE COURTESY OF ESRI/USGS

LEGEND

- DOMESTIC WATER WELL
- SURFACE WATER FEATURE
- 1/2 MILE RADIUS
- PAD/PIT LOCATION

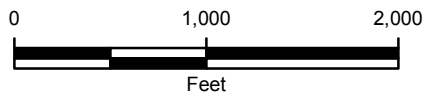
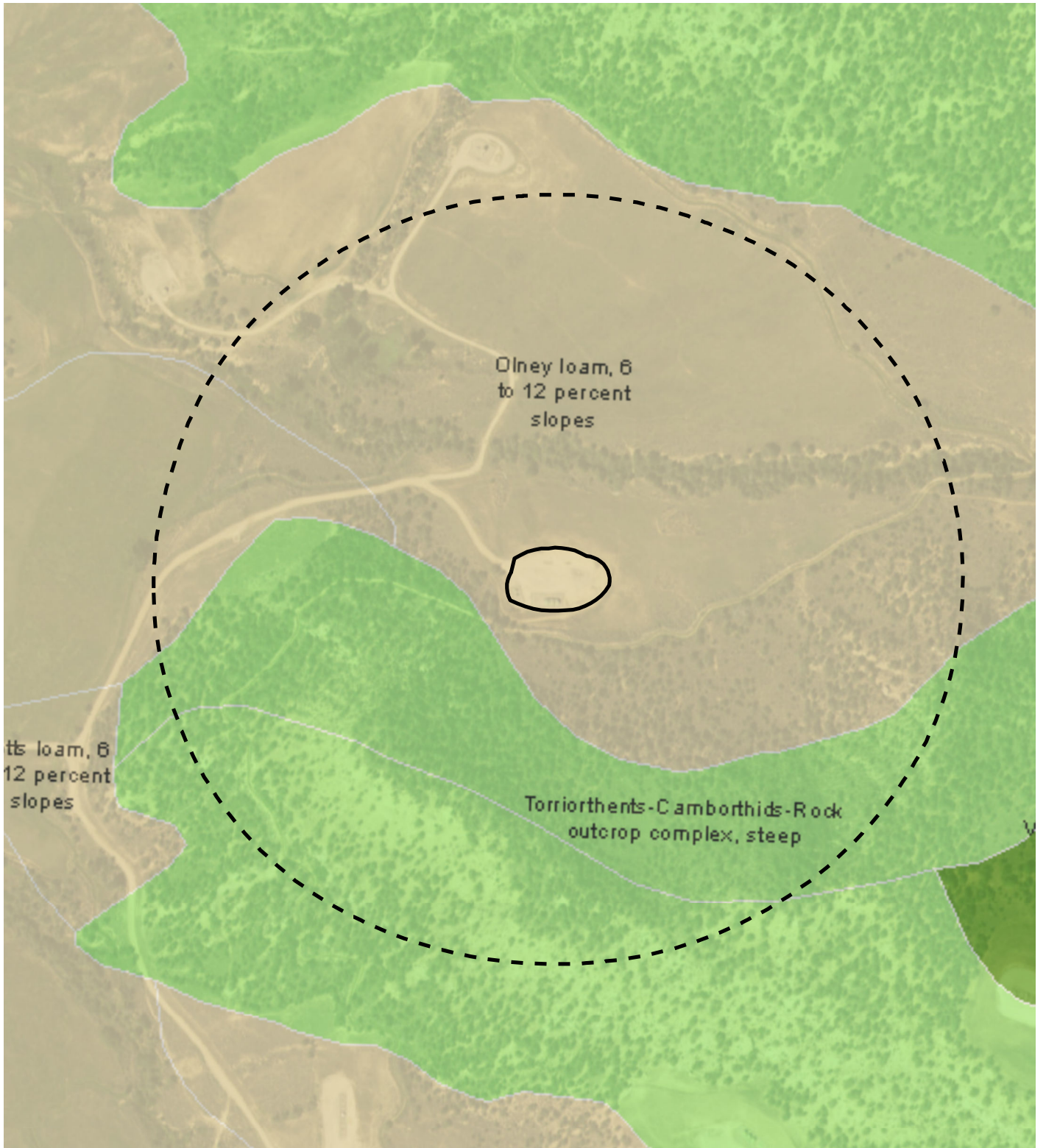


FIGURE 1
WATER WELL LOCATION MAP
GGU MILLER 11D
NWNW SEC 32-T6S-R91W
GARFIELD COUNTY, COLORADO
VANGUARD OPERATING, LLC





LEGEND



-  PAD/PIT LOCATION
-  1,000 FT BUFFER

IMAGE COURTESY OF ESRI

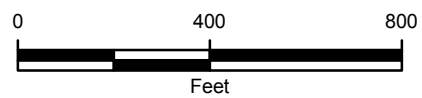


FIGURE 2
 STATE SOILS MAP
 GGU MILLER 11D
 NWNW SEC 32-T6S-R91W
 GARFIELD COUNTY, COLORADO
 VANGUARD OPERATING, LLC



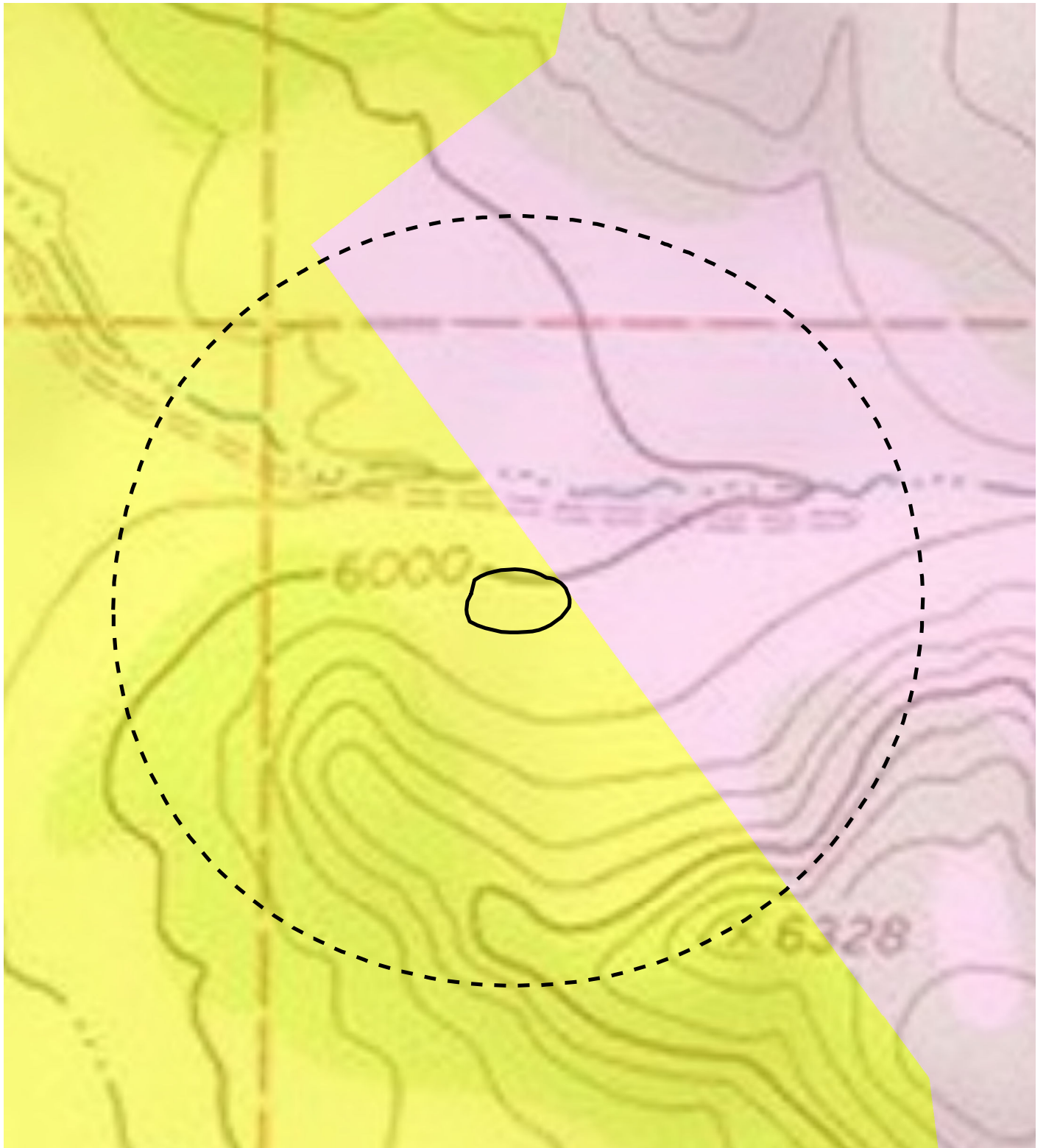

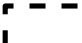




IMAGE COURTESY OF ESRI

LEGEND

-  PAD/PIT LOCATION
-  1,000 FT BUFFER
-  QG GRAVELS AND ALLUVIUMS
(PINEDALE AND BULL LAKE AGE)
-  TWO WASATCH FORMATION
(INCLUDING FORT UNION EQUIVALENT AT BASE)
AND OHIO CREEK FORMATION

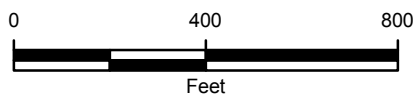


FIGURE 3
 STATE SURFACE GEOLOGY MAP
 GGU MILLER 11D
 NWNW SEC 32-T6S-R91W
 GARFIELD COUNTY, COLORADO
 VANGUARD OPERATING, LLC

