

HALLIBURTON

iCem[®] Service

TERRA ENERGY PARTNERS

For: Lynn Cass & Abe Alexander

Date: Tuesday, January 24, 2017

RU 324-7 Surface PJR

API# 05-045-23252-00

Sincerely,

Grand Junction Cement Engineering

1.0 Real-Time Job Summary

1.1 Job Event Log

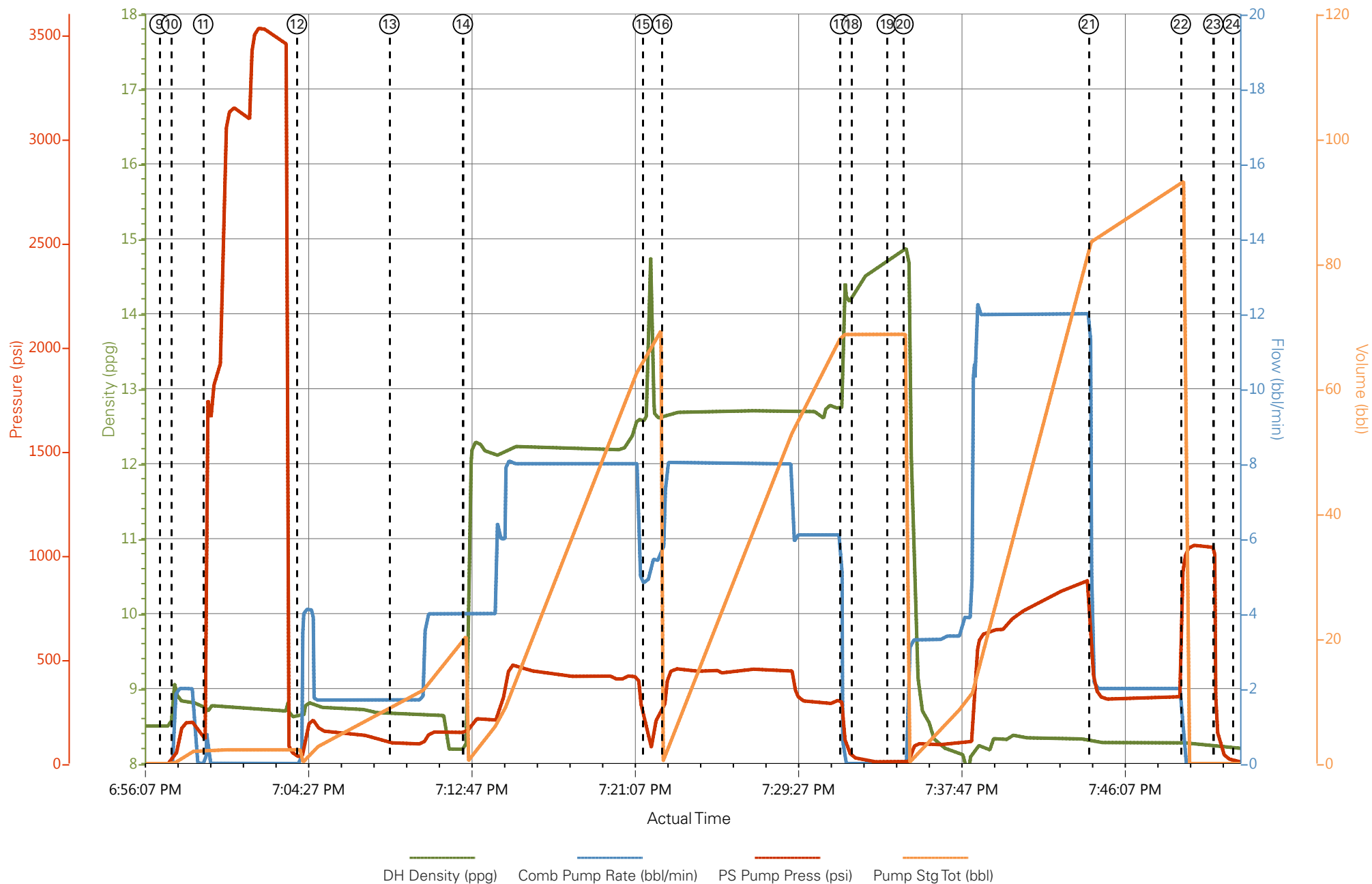
| Type | Seq. No. | Graph Label | Date | Time | Source | DH Density (ppg) | Comb Pump Rate (bbl/min) | PS Pump Press (psi) | Pump Stg Tot (bbl) | Comments |
|-------|----------|---|-----------|----------|--------|---------------------|-----------------------------|------------------------|-----------------------|---|
| Event | 1 | Call Out | 1/24/2017 | 11:00:00 | USER | | | | | REQUESTED ON LOCATION AT 17:00 1/24/2017 |
| Event | 2 | Arrive at Location from Other Job or Site | 1/24/2017 | 17:09:45 | USER | | | | | ALL HES PRESENT |
| Event | 3 | Crew Leave Yard | 1/24/2017 | 17:10:57 | USER | | | | | 1 - 550 PU, 1 - 660 BULK TRUCK. PUMP WAS LEFT ON LOCATION. |
| Event | 4 | Arrive At Loc | 1/24/2017 | 17:11:18 | USER | | | | | ARRIVED 1 HOUR EARLY AND THEY WERE RIGGING UP CASING CREW |
| Event | 5 | Assessment Of Location Safety Meeting | 1/24/2017 | 17:12:03 | USER | | | | | MET WITH CO REP TO GO OVER NUMBERS AND JOB PROCEDURE. DID A WALK AROUND OF LOCATION AND COLLECTED WATER SAMPLE. (PH - 7, CHL - 0, TEMP 70F) CUSTOMER REVIEWED/OFFERES SDS |
| Event | 6 | Pre-Rig Up Safety Meeting | 1/24/2017 | 17:12:56 | USER | | | | | ALL HES PRESENT. |
| Event | 7 | Rig-Up Equipment | 1/24/2017 | 17:13:20 | USER | | | | | FILLED OUT JSA AND SPOTTED TRUCKS IN. RIGGED UP IRON AND WAITED FOR CASING TO BE COMPLETED |
| Event | 8 | Pre-Job Safety Meeting | 1/24/2017 | 17:13:40 | USER | | | | | MET WITH RIG CREW TO GO OVER JOB. ALL HES PRESENT |
| Event | 9 | Start Job | 1/24/2017 | 18:57:00 | COM5 | | | | | TD 1195', TP 1184' FC 1137', CSG 9.625" |

32.3 PPG H-40, OH 13.5", MW 8.7 PPG VIS
38. FINAL CIRCULATING RATE AND
PRESSURE WAS 532 GPM AND 190 PSI AND
THEY CIRCULATED FOR ABOUT 45 MIN
BEFORE STARTING CEMENT JOB..

| | | | | | | | | | | |
|-------|----|-------------------|-----------|----------|------|------|----|------|------|--|
| Event | 10 | Prime Pumps | 1/24/2017 | 18:57:36 | COM5 | 8.33 | 2 | 200 | 2 | 2 BBLS FRESH WATER |
| Event | 11 | Test Lines | 1/24/2017 | 18:59:14 | COM5 | | | 3535 | | TESTED TO 3535 PSI. TESTED GOOD. KO'S FUNCTIONING |
| Event | 12 | Pump Spacer 1 | 1/24/2017 | 19:04:01 | COM5 | 8.33 | 4 | 170 | 20 | 20 BBLS FRESH WATER |
| Event | 13 | Check weight | 1/24/2017 | 19:08:44 | COM5 | 12.3 | | | | 12.3 PPG USING PRESSURIZED MUD SCALE |
| Event | 14 | Pump Lead Cement | 1/24/2017 | 19:12:29 | COM5 | 12.3 | 8 | 450 | 59.3 | 140 SKS (59.3 BBLS) 12.3 PPG, 2.38 FT3/SK, 13.77 GAL/SK |
| Event | 15 | Other | 1/24/2017 | 19:21:40 | USER | | | | | OPERATOR CLOSED DOWNHOLE ON ACCIDENT DURING TRANSITION TO TAIL |
| Event | 16 | Pump Tail Cement | 1/24/2017 | 19:22:39 | COM5 | 12.8 | 8 | 440 | 66 | 175 SKS (66 BBLS) 12.8 PPG, 2.11 FT3/SK, 11.78 GAL/SK |
| Event | 17 | Shutdown | 1/24/2017 | 19:31:44 | COM5 | | | | | END OF CEMENT |
| Event | 18 | Wash On Top | 1/24/2017 | 19:32:19 | USER | 8.33 | | | | 10 BBLS FRESH WATER |
| Event | 19 | Drop Top Plug | 1/24/2017 | 19:34:07 | COM5 | | | | | PLUG WENT. WITNESSED BY CO REP |
| Event | 20 | Pump Displacement | 1/24/2017 | 19:34:58 | COM5 | 8.33 | 12 | 880 | 89.5 | 89.5 BBLS FRESH WATER. PUMPED AT 12 BBLS/MIN PER CO REP |
| Event | 21 | Slow Rate | 1/24/2017 | 19:44:25 | COM5 | 8.33 | 2 | 220 | 79 | SLOWED TO 2 BBLS/MIN TO LAND PLUG |
| Event | 22 | Bump Plug | 1/24/2017 | 19:49:07 | COM5 | 8.33 | 2 | 320 | | BUMPED AT 320 PSI AND WENT TO 1040 PSI |
| Event | 23 | Check Floats | 1/24/2017 | 19:50:47 | COM5 | 8.33 | | 1040 | | FLOATS HELD. .5 BBLS FLOWBACK TO TRUCK |

| | | | | | | |
|-------|----|--------------------------------|-----------|----------|------|--|
| Event | 24 | End Job | 1/24/2017 | 19:51:46 | COM5 | GREAT RETURNS THROUGHOUT JOB. 16 BBLs OF LEAD CEMENT TO SURFACE |
| Event | 25 | Pre-Rig Down Safety Meeting | 1/24/2017 | 19:55:00 | USER | ALL HES PRESENT |
| Event | 26 | Rig Down Lines | 1/24/2017 | 20:10:00 | USER | |
| Event | 27 | Pre-Convoy Safety Meeting | 1/24/2017 | 21:00:00 | USER | ALL HES PRESENT |
| Event | 28 | Crew Leave Location | 1/24/2017 | 21:15:00 | USER | THANK YOU FOR USING HALLIBURTON CEMENT. CLIFF SPARKS AND CREW |

TEP YOUNBERG RU 324-7 9.625" SURFACE CASING



⑨ Start Job ⑩ Prime Pumps ⑪ Test Lines ⑫ Pump Spacer 1 ⑬ Check weight ⑭ Pump Lead Cement ⑮ Other ⑯ Pump Tail Cement ⑰ Shutdown ⑱ Wash On Top ⑲ Drop Top Plug ⑳ Pump

HALLIBURTON | iCem® Service

Created: 2017-01-24 17:06:34, Version: 4.2.393

Edit

Customer: TERRA ENERGY PARTNERS

Job Date: 1/24/2017 6:00:34 PM

Well: RU 324-7

Representative: BRANDON HAIRE

Sales Order #: 903796934

ELITE - 8: CLIFF SPARKS / DAVID CAMPBELL

TEP YOUNBERG RU 324-7 9.625" SURFACE CASING

