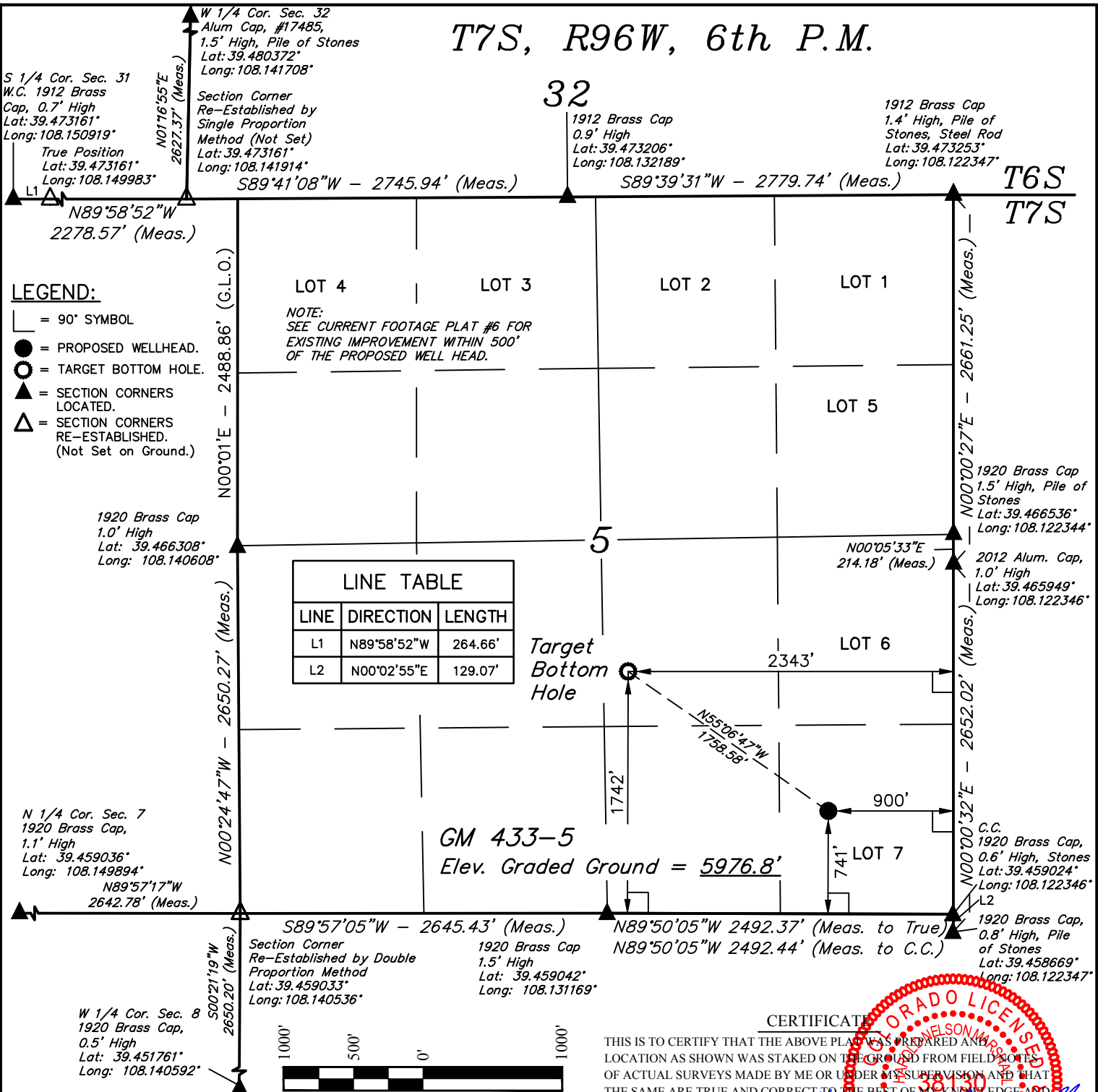


T7S, R96W, 6th P.M.

32



LEGEND:

- └─┘ = 90° SYMBOL
- = PROPOSED WELLHEAD.
- = TARGET BOTTOM HOLE.
- ▲ = SECTION CORNERS LOCATED.
- △ = SECTION CORNERS RE-ESTABLISHED. (Not Set on Ground.)

NOTE:
SEE CURRENT FOOTAGE PLAT #6 FOR EXISTING IMPROVEMENT WITHIN 500' OF THE PROPOSED WELL HEAD.

LINE TABLE		
LINE	DIRECTION	LENGTH
L1	N89°58'52"W	264.66'
L2	N00°02'55"E	129.07'

PDOP = 1.3

NAD 83 (TARGET BOTTOM HOLE)	NAD 83 (SURFACE LOCATION)
LATITUDE = 39°27'49.76" (39.463822)	LATITUDE = 39°27'39.83" (39.461064)
LONGITUDE = 108°07'50.31" (108.130642)	LONGITUDE = 108°07'31.92" (108.125533)
STATE PLANE NAD 83 COLO. CENT.	STATE PLANE NAD 83 COLO. CENT.
N: 1604579.50 E: 2257396.09	N: 1603533.00 E: 2258808.70

PLAT #1

CERTIFICATE OF SURVEY

THIS IS TO CERTIFY THAT THE ABOVE PLAT WAS PREPARED AND THE LOCATION AS SHOWN WAS STAKED ON THE GROUND FROM FIELD NOTES OF ACTUAL SURVEYS MADE BY ME OR UNDER MY SUPERVISION AND THAT THE SAME ARE TRUE AND CORRECT TO THE BEST OF MY KNOWLEDGE AND BELIEF.

Handwritten Signature

REGISTERED LAND SURVEYOR
REGISTRATION NO. 18180
STATE OF COLORADO

03-02-17

REV: 3 03-02-17 M.D. (SHL CHANGE)

BASIS OF BEARINGS
BASIS OF BEARINGS IS A G.P.S. OBSERVATION

BASIS OF ELEVATION

SPOT ELEVATION AT THE NORTHWEST CORNER OF SECTION 30, T5S, R95W, 6th P.M., TAKEN FROM THE FORKED GULCH, QUADRANGLE, COLORADO, GARFIELD COUNTY, 7.5 MINUTE QUAD. (TOPOGRAPHIC MAP) PUBLISHED BY THE UNITED STATES DEPARTMENT OF THE INTERIOR, GEOLOGICAL SURVEY. SAID ELEVATION IS MARKED AS BEING 5966 FEET.



UELS, LLC
Corporate Office * 85 South 200 East
Vernal, UT 84078 * (435) 789-1017



TEP Rocky Mountain LLC

GM 433-5
LOT 7, SECTION 5, T7S, R96W, 6th P.M.
GARFIELD COUNTY, COLORADO

SURVEYED BY: BRIAN BAKER, J.B.	DATE: 05-08-13
DRAWN BY: M.D.	DATE DRAWN: 07-31-14
SCALE: 1" = 1000'	

WELL LOCATION PLAT