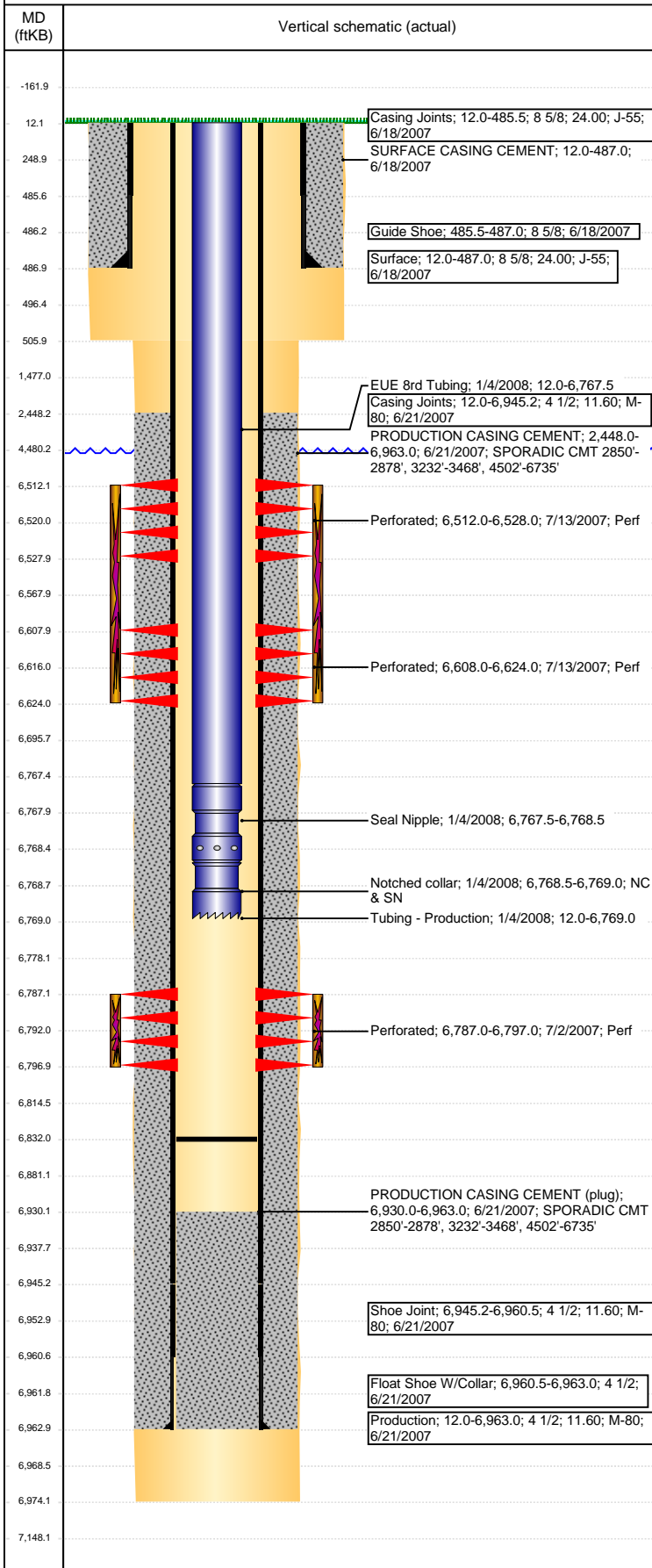


**Well Name: WELLS RANCH USX BB05-13**

VERTICAL - ORIGINAL HOLE, 3/22/2017 10:10:29 AM



## Well Header

API 05-123-25282	Business Unit DJ BASIN	District 15	Well Config VERTICAL
Original KB Elevation (ft) 4,722	KB - GL / MSL (ftKB) 12.00	Spud Date 6/17/2007	P & A Date
Comment			

## Directions To Well

## Congressional Location

Quarter 3 SW	Quarter 4 SW	Section 5	Township 5	Twnshp N/S Dir N	Range 63	Range E/W Dir W
-----------------	-----------------	--------------	---------------	---------------------	-------------	--------------------

## Bottom Hole Location

North-South Distance (ft)	From N or S Line	East-West Distance (ft)	From E or W Line
---------------------------	------------------	-------------------------	------------------

## Plug Back Total Depths

Date	Depth (ftKB)	Method	Com
6/21/2007	6,946.0	CASING TALLY	FLOAT SHOE W/COLLAR
6/28/2007	6,930.0	CASED HOLE LOG	DEPTH LOGGER ON CBL
1/4/2008	6,832.0	TAG	C/O TO 6831'

## Wellbore Sections

Section Des	Size (in)	Act Top, MD (ftKB)	Act Btm, MD (ftKB)
SURFACE	12 1/4	12	506
PRODUCTION	7 7/8	506	6,974

## Zone Statuses

Zone Name	Status Date	Status	Fluid Type	Job	Prod Method
NIOBRARA	7/15/2007	PR		DRILLING/CO...	
CODELL	7/15/2007	PR		DRILLING/CO...	

## Casing Strings

### Surface, 487.0ftKB

Casing Description	Run Date	OD (in)	Wt/Len (l...)	Grade	Top, MD (ft...)	MD (ftKB)
Surface	6/18/2007	8 5/8	24.00	J-55	12.0	487.0

### Production, 6,963.0ftKB

Casing Description	Run Date	OD (in)	Wt/Len (l...)	Grade	Top, MD (ft...)	MD (ftKB)
Production	6/21/2007	4 1/2	11.60	M-80	12.0	6,963.0

## Cement

Description	Top Depth (ftKB)	Bottom Depth (ftKB)
SURFACE CASING CEMENT	12.0	487.0
PRODUCTION CASING CEMENT	2,448.0	6,963.0

## Tubing Strings

Tubing Description	Run Date	String...	ID (in)	Wt (lb/ft)	Grade	Len (ft)	Set De...
Tubing - Production	1/4/2008	2 3/8	2.00	4.70	J-55	6,757.00	

## Tubing Components

Item Des	OD (in)	Wt (lb/ft)	Grade	Jts	Len (ft)	Btm (ftKB)	Btm (TVD) (ftKB)
EUE 8rd Tubing	2 3/8	4.70	J-55	219	6,755.50	6,767.5	
Seal Nipple	2 3/8				1.00	6,768.5	
Notched collar	2 3/8				0.50	6,769.0	

## Other In Hole

Run Date	Des	OD (in)	Top (ftKB)	Btm (ftKB)

## Logs

Date	Type	Top, MD (ftKB)	Btm, MD (ftKB)
6/21/2007	COMPENSATED DENSITY	2,640.0	6,953.0
6/21/2007	INDUCTION	12.0	6,973.0
6/28/2007	CBL/CCL/GR	2,300.0	6,923.0
5/14/2015	GYRO	12.0	6,700.0

## Perforation Data

Linked Zone	Bnch/St g	Sum of Entered Shot Total	Top (ftKB)	Btm (ftKB)	Date
NIOBRARA, ORIGINAL HOLE	A	64	6,512.00	6,528.00	7/13/2007
NIOBRARA, ORIGINAL HOLE	B	64	6,608.00	6,624.00	7/13/2007
CODELL, ORIGINAL HOLE		40	6,787.00	6,797.00	7/2/2007

## Total (Sum)

168				
-----	--	--	--	--

**Well Name: WELLS RANCH USX BB05-13**

VERTICAL - ORIGINAL HOLE, 3/22/2017 10:10:32 AM

## Stimulation Intervals

Start Date 7/13/2007	Primary Job Type DRILLING/COMPLETION - ORIGINAL	
Technical Result	Tech Result Details	Tech Result Note
Comment		
Start Date 7/13/2007	Primary Job Type DRILLING/COMPLETION - ORIGINAL	
Technical Result	Tech Result Details	Tech Result Note
Comment		

