

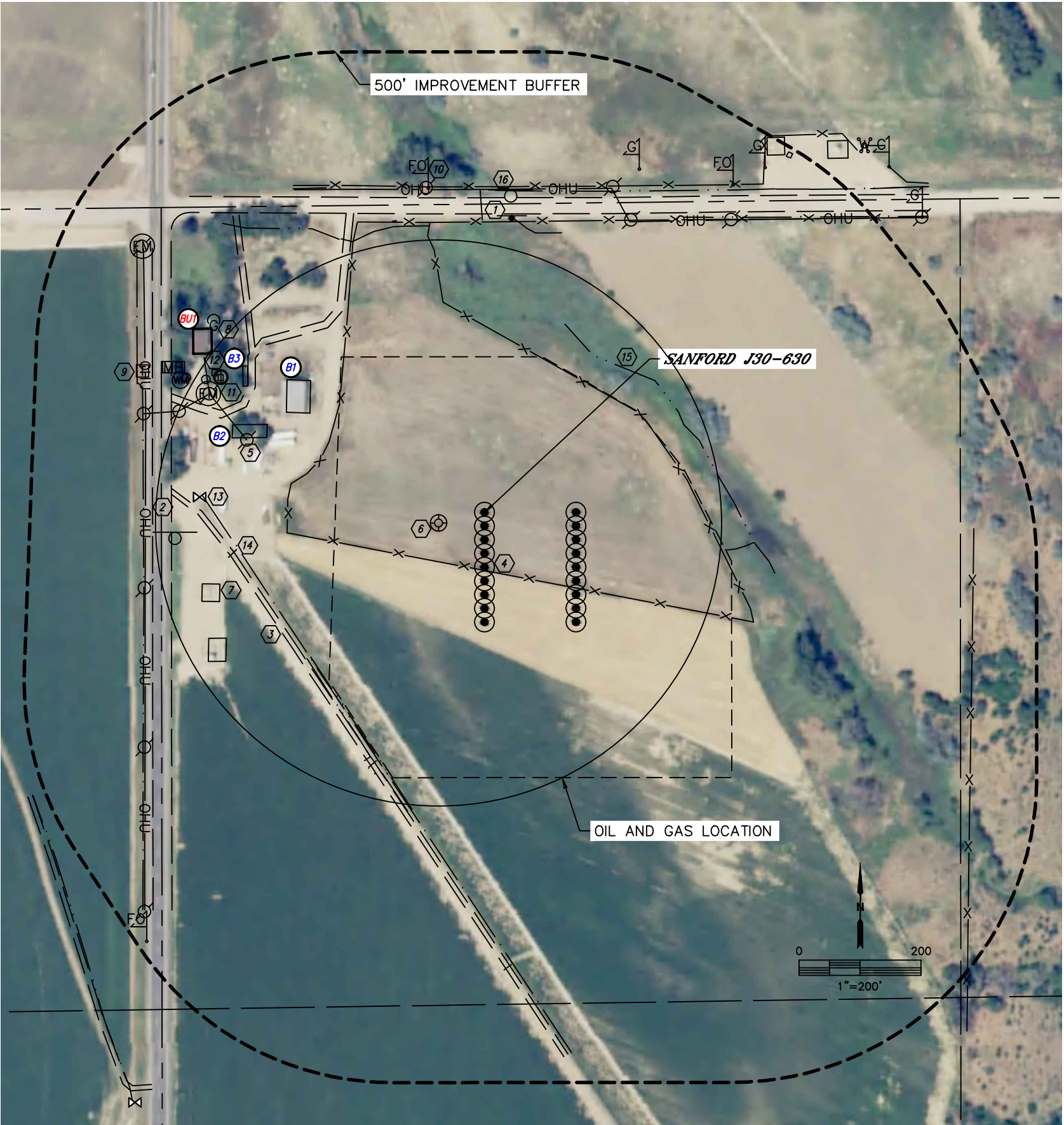


Lat40°, Inc. 6250 W. 10th Street, Unit 2, Greeley, CO 970-515-5294

LOCATION DRAWING

J32-02 PAD

SECTION: 32
TOWNSHIP: 5N
RANGE: 66W
6TH. P.M.
WELD COUNTY, CO



IMPROVEMENTS:
(MEASURED FROM THE PROPOSED SANFORD J30-630 WELL LOCATION)

- ⓑⓞⓞ BUILDING UNIT BU1 517' NW
- ⓑⓞ BUILDING B1 329' NW, B2 378' NW, B3 440' NW
- ① 49TH STREET 489' N
- ② TWO RIVERS PARKWAY 513' W
- ③ ROAD 378' & 397' SW, 427' NW
- ④ FENCE 94' S, 266' NE, 279' NW, 335' & 803' E, 476' & 534' N
- ⑤ OVERHEAD UTILITY LINE 407' & 493' NW, 530' N, 556' W
- ⑥ EXISTING WELL HEAD 77' SW
- ⑦ EXISTING PRODUCTION EQUIPMENT (NOBLE) 449' & 471' SW, 747' & 765' NE
- ⑧ GAS SERVICE/MARKER 544' NW, 617' & 729' NE
- ⑨ TELEPHONE PEDESTAL 607' NW
- ⑩ FIBER OPTIC MARKER 540' NW, 674' NE, 895' SW
- ⑪ ELECTRIC METER 493' & 711' NW
- ⑫ IRRIGATION WELL 486' NW
- ⑬ IRRIGATION APPURTENANCES 468' W, 493', 497', 506', 537' & 544' NW
- ⑭ PIPE 411' W, 444' SW, 479' N, 493', 498', 499' & 608' NW, 714' NE, 739' S
- ⑮ DITCH 312' NE, 368', 370' & 374' SW, 400' SE, 465' & 479' N, 559' W, 607' NW
- ⑯ BORROW DITCH 528' N, 585' NE, 592' NW

NEAREST CULTURAL ITEMS		
MEASURED FROM THE NEAREST	PROPOSED WELL HEAD	SPOMER 2-32 WELL
BUILDING	±329' NW	±277' NW
BUILDING UNIT	±517' NW	±464' NW
HIGH OCCUPANCY BUILDING UNIT	5280'+	5280'+
DESIGNATED OUTSIDE ACTIVITY AREA	5280'+	5280'+
PUBLIC ROAD (49TH STREET)	±489' N	±507' N
ABOVE GROUND UTILITY	±407' NW	±343' NW
RAILROAD	5280'+	5280'+
PROPERTY LINE	±505' N	±454' W