

EXTRACTION OIL & GAS

**Weld County
Sec 21-T5N-R65W
AD-DAIRY C6-20-24**

ORIGINAL WELLBORE

Plan: PROPOSAL #1

Standard Planning Report

09 February, 2017



Project: Weld County
Site: Sec 21-T5N-R65W
Well: AD-DAIRY C6-20-24
Wellbore: ORIGINAL WELLBORE
Design: PROPOSAL #1



Azimuths to True North
Magnetic North: 8.28°

Magnetic Field
Strength: 52516.3nT
Dip Angle: 66.88°
Date: 5/22/2016
Model: IGRF2015

WELL DETAILS: AD-DAIRY C6-20-24

+N/-S	+E/-W	Northing	Ground Level:	4638.0	Easting	Latitude	Longitude	Slot
0.0	0.0	1383403.49	3229413.34	40° 22' 58.512 N	104° 40' 35.328 W			

ANNOTATIONS

MD	Inc	Azi	TVD	+N/-S	+E/-W	VSect	Departure	Annotation
4167.0	0.00	0.00	4167.0	0.0	0.0	0.0	0.0	Build 2°/100'
4581.9	8.30	229.02	4580.4	-19.7	-22.6	-19.7	30.0	Hold 8.30° Inc
6735.2	8.30	229.02	6711.2	-223.5	-257.2	-223.5	340.7	KOP, Build 10°/100'
7573.3	90.00	270.69	7220.0	-265.9	-827.4	-265.9	915.3	LP @ 90° Inc, 270.69° Azm Hold
19898.7	90.00	270.69	7220.0	-116.7	-13151.8	-116.7	13240.7	TD at 19898.7' MD

SECTION DETAILS

Sec	MD	Inc	Azi	TVD	+N/-S	+E/-W	Dleg	TFace	VSect	Target
1	0.0	0.00	0.00	0.0	0.0	0.0	0.00	0.00	0.0	
2	4167.0	0.00	0.00	4167.0	0.0	0.0	0.00	0.00	0.0	
3	4581.9	8.30	229.02	4580.4	-19.7	-22.6	2.00	229.02	22.8	
4	6735.2	8.30	229.02	6711.2	-223.5	-257.2	0.00	0.00	259.2	
5	7573.3	90.00	270.69	7220.0	-265.9	-827.4	10.00	41.98	829.7	HZ LANDING PNT -
6	19898.7	90.00	270.69	7220.0	-116.7	-13151.8	0.00	0.00	13152.4	BHL - AD-DAIRY C6-20-24

DESIGN TARGET DETAILS

Name	TVD	+N/-S	+E/-W	Northing	Easting	Latitude	Longitude	Shape
BHL - AD-DAIRY C6-20-24	7220.0	-116.7	-13151.8	1383164.65	3216263.14	40° 22' 57.324 N	104° 43' 25.284 W	Point
HZ LANDING PNT - AD-DAIRY C6-20-24	7220.0	-265.9	-827.4	1383129.90	3228588.45	40° 22' 55.884 N	104° 40' 46.020 W	Point

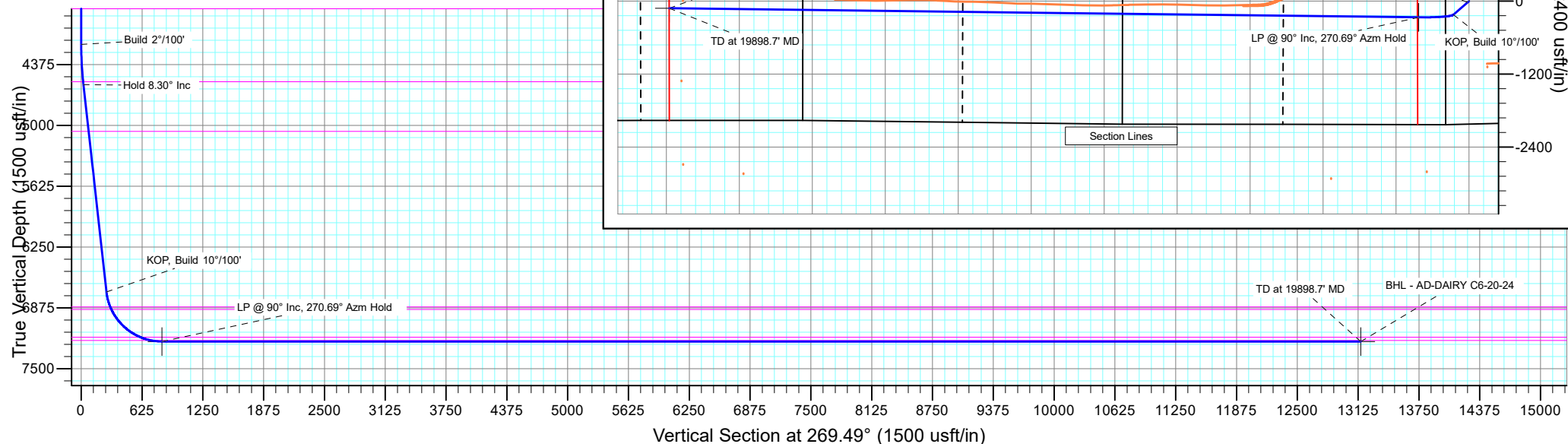
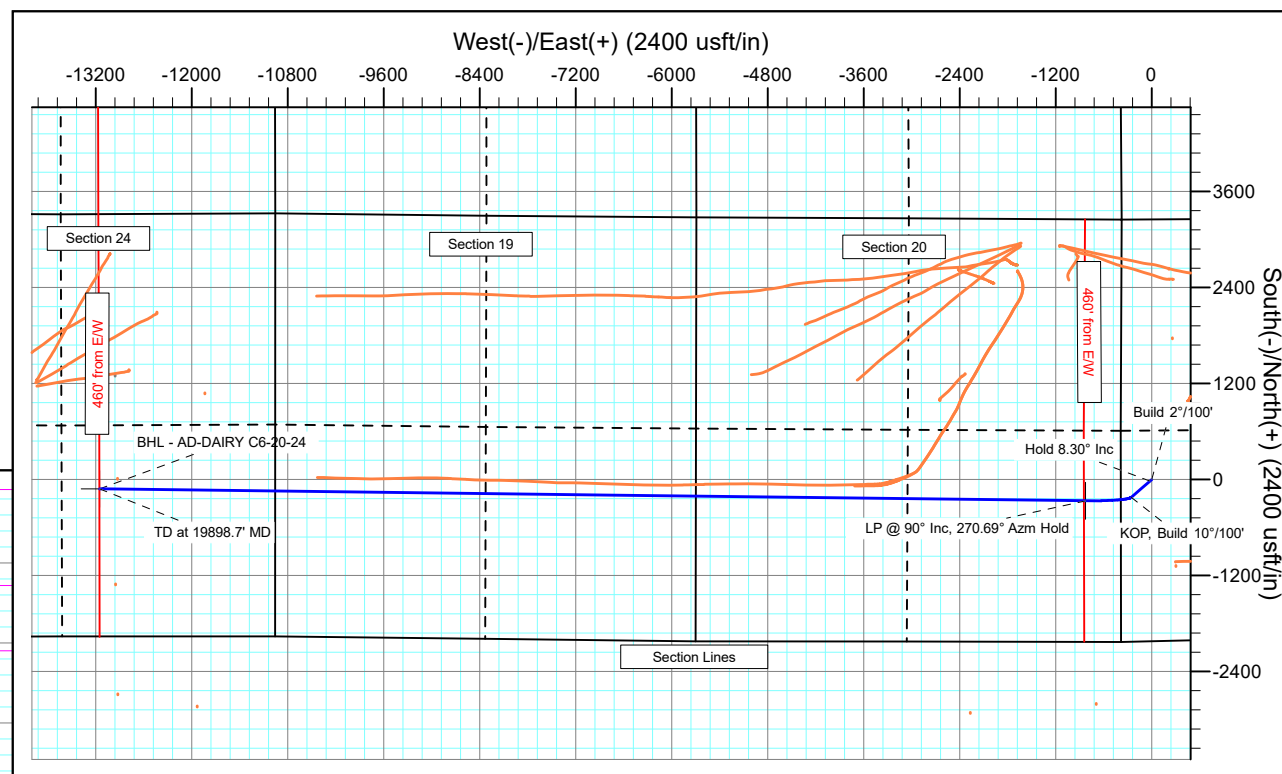
FORMATION TOP DETAILS

TVDPath	MDPath	Formation
3800.0	3800.0	PARKMAN
4550.0	4551.2	SUSSEX
5060.0	5066.5	SHANNON
6865.0	6895.1	SHARON SPRINGS
6890.0	6922.5	NIOBRARA
7175.0	7344.2	FORT HAYS
7210.0	7465.8	CODELL

PROJECT DETAILS: Weld County

Geodetic System: US State Plane 1983
Datum: North American Datum 1983
Ellipsoid: GRS 1980
Zone: Colorado Northern Zone
System Datum: Mean Sea Level

SHL:
369' FWL, 2020' FSL
Sec 21-T5N-R65W
LP:
1763' FSL, 460' FEL
Sec 20-T5N-R65W
BHL:
1843' FSL, 2211' FEL
Sec 24-T5N-R66W



Planning Report

Database:	EDT_32Bit_ODBC	Local Co-ordinate Reference:	Well AD-DAIRY C6-20-24
Company:	EXTRACTION OIL & GAS	TVD Reference:	KB-EST @ 4654.0usft (Original Well Elev)
Project:	Weld County	MD Reference:	KB-EST @ 4654.0usft (Original Well Elev)
Site:	Sec 21-T5N-R65W	North Reference:	True
Well:	AD-DAIRY C6-20-24	Survey Calculation Method:	Minimum Curvature
Wellbore:	ORIGINAL WELLBORE		
Design:	PROPOSAL #1		

Project	Weld County		
Map System:	US State Plane 1983	System Datum:	Mean Sea Level
Geo Datum:	North American Datum 1983		
Map Zone:	Colorado Northern Zone		

Site		Sec 21-T5N-R65W			
Site Position:		Northing:	1,383,619.20 usft	Latitude:	40° 23' 0.636 N
From:	Lat/Long	Easting:	3,229,494.91 usft	Longitude:	104° 40' 34.248 W
Position Uncertainty:	0.0 usft	Slot Radius:	13.200 in	Grid Convergence:	0.53 °

Well	AD-DAIRY C6-20-24					
Well Position	+N/-S	-214.9 usft	Northing:	1,383,403.49 usft	Latitude:	40° 22' 58.512 N
	+E/-W	-83.6 usft	Easting:	3,229,413.34 usft	Longitude:	104° 40' 35.328 W
Position Uncertainty		0.0 usft	Wellhead Elevation:		Ground Level:	4,638.0 usft

Wellbore	ORIGINAL WELLBORE				
Magnetics	Model Name	Sample Date	Declination (°)	Dip Angle (°)	Field Strength (nT)
	IGRF2015	5/22/2016	8.28	66.88	52,516.31652745

Design	PROPOSAL #1			
Audit Notes:				
Version:	Phase:	PROTOTYPE	Tie On Depth:	0.0
Vertical Section:	Depth From (TVD) (usft)	+N/-S (usft)	+E/-W (usft)	Direction (°)
	0.0	0.0	0.0	0.00

Plan Survey Tool Program			Date	2/9/2017	
Depth From (usft)	Depth To (usft)	Survey (Wellbore)	Tool Name	Remarks	
1	0.0	19,898.7	PROPOSAL #1 (ORIGINAL WEL	MWD OWSG Rev 2	
				OWSG MWD - Standard	

Plan Sections										
Measured Depth (usft)	Inclination (°)	Azimuth (°)	Vertical Depth (usft)	+N/-S (usft)	+E/-W (usft)	Dogleg Rate (°/100ft)	Build Rate (°/100ft)	Turn Rate (°/100ft)	TFO (°)	Target
0.0	0.00	0.00	0.0	0.0	0.0	0.00	0.00	0.00	0.00	
4,167.0	0.00	0.00	4,167.0	0.0	0.0	0.00	0.00	0.00	0.00	
4,581.9	8.30	229.02	4,580.4	-19.7	-22.6	2.00	2.00	0.00	229.02	
6,735.2	8.30	229.02	6,711.2	-223.5	-257.2	0.00	0.00	0.00	0.00	
7,573.3	90.00	270.69	7,220.0	-265.9	-827.4	10.00	9.75	4.97	41.98	HZ LANDING PNT - /
19,898.7	90.00	270.69	7,220.0	-116.7	-13,151.8	0.00	0.00	0.00	0.00	BHL - AD-DAIRY C6-

Planning Report

Database:	EDT_32Bit_ODBC	Local Co-ordinate Reference:	Well AD-DAIRY C6-20-24
Company:	EXTRACTION OIL & GAS	TVD Reference:	KB-EST @ 4654.0usft (Original Well Elev)
Project:	Weld County	MD Reference:	KB-EST @ 4654.0usft (Original Well Elev)
Site:	Sec 21-T5N-R65W	North Reference:	True
Well:	AD-DAIRY C6-20-24	Survey Calculation Method:	Minimum Curvature
Wellbore:	ORIGINAL WELLBORE		
Design:	PROPOSAL #1		

Planned Survey									
Measured Depth (usft)	Inclination (°)	Azimuth (°)	Vertical Depth (usft)	+N-S (usft)	+E-W (usft)	Vertical Section (usft)	Dogleg Rate (°/100ft)	Build Rate (°/100ft)	Turn Rate (°/100ft)
0.0	0.00	0.00	0.0	0.0	0.0	0.0	0.00	0.00	0.00
100.0	0.00	0.00	100.0	0.0	0.0	0.0	0.00	0.00	0.00
200.0	0.00	0.00	200.0	0.0	0.0	0.0	0.00	0.00	0.00
300.0	0.00	0.00	300.0	0.0	0.0	0.0	0.00	0.00	0.00
400.0	0.00	0.00	400.0	0.0	0.0	0.0	0.00	0.00	0.00
500.0	0.00	0.00	500.0	0.0	0.0	0.0	0.00	0.00	0.00
600.0	0.00	0.00	600.0	0.0	0.0	0.0	0.00	0.00	0.00
700.0	0.00	0.00	700.0	0.0	0.0	0.0	0.00	0.00	0.00
800.0	0.00	0.00	800.0	0.0	0.0	0.0	0.00	0.00	0.00
900.0	0.00	0.00	900.0	0.0	0.0	0.0	0.00	0.00	0.00
1,000.0	0.00	0.00	1,000.0	0.0	0.0	0.0	0.00	0.00	0.00
1,100.0	0.00	0.00	1,100.0	0.0	0.0	0.0	0.00	0.00	0.00
1,200.0	0.00	0.00	1,200.0	0.0	0.0	0.0	0.00	0.00	0.00
1,300.0	0.00	0.00	1,300.0	0.0	0.0	0.0	0.00	0.00	0.00
1,400.0	0.00	0.00	1,400.0	0.0	0.0	0.0	0.00	0.00	0.00
1,500.0	0.00	0.00	1,500.0	0.0	0.0	0.0	0.00	0.00	0.00
1,600.0	0.00	0.00	1,600.0	0.0	0.0	0.0	0.00	0.00	0.00
1,700.0	0.00	0.00	1,700.0	0.0	0.0	0.0	0.00	0.00	0.00
1,800.0	0.00	0.00	1,800.0	0.0	0.0	0.0	0.00	0.00	0.00
1,900.0	0.00	0.00	1,900.0	0.0	0.0	0.0	0.00	0.00	0.00
2,000.0	0.00	0.00	2,000.0	0.0	0.0	0.0	0.00	0.00	0.00
2,100.0	0.00	0.00	2,100.0	0.0	0.0	0.0	0.00	0.00	0.00
2,200.0	0.00	0.00	2,200.0	0.0	0.0	0.0	0.00	0.00	0.00
2,300.0	0.00	0.00	2,300.0	0.0	0.0	0.0	0.00	0.00	0.00
2,400.0	0.00	0.00	2,400.0	0.0	0.0	0.0	0.00	0.00	0.00
2,500.0	0.00	0.00	2,500.0	0.0	0.0	0.0	0.00	0.00	0.00
2,600.0	0.00	0.00	2,600.0	0.0	0.0	0.0	0.00	0.00	0.00
2,700.0	0.00	0.00	2,700.0	0.0	0.0	0.0	0.00	0.00	0.00
2,800.0	0.00	0.00	2,800.0	0.0	0.0	0.0	0.00	0.00	0.00
2,900.0	0.00	0.00	2,900.0	0.0	0.0	0.0	0.00	0.00	0.00
3,000.0	0.00	0.00	3,000.0	0.0	0.0	0.0	0.00	0.00	0.00
3,100.0	0.00	0.00	3,100.0	0.0	0.0	0.0	0.00	0.00	0.00
3,200.0	0.00	0.00	3,200.0	0.0	0.0	0.0	0.00	0.00	0.00
3,300.0	0.00	0.00	3,300.0	0.0	0.0	0.0	0.00	0.00	0.00
3,400.0	0.00	0.00	3,400.0	0.0	0.0	0.0	0.00	0.00	0.00
3,500.0	0.00	0.00	3,500.0	0.0	0.0	0.0	0.00	0.00	0.00
3,600.0	0.00	0.00	3,600.0	0.0	0.0	0.0	0.00	0.00	0.00
3,700.0	0.00	0.00	3,700.0	0.0	0.0	0.0	0.00	0.00	0.00
3,800.0	0.00	0.00	3,800.0	0.0	0.0	0.0	0.00	0.00	0.00
PARKMAN									
3,900.0	0.00	0.00	3,900.0	0.0	0.0	0.0	0.00	0.00	0.00
4,000.0	0.00	0.00	4,000.0	0.0	0.0	0.0	0.00	0.00	0.00
4,100.0	0.00	0.00	4,100.0	0.0	0.0	0.0	0.00	0.00	0.00
4,167.0	0.00	0.00	4,167.0	0.0	0.0	0.0	0.00	0.00	0.00
Build 2°/100'									
4,200.0	0.66	229.02	4,200.0	-0.1	-0.1	-0.1	2.00	2.00	0.00
4,300.0	2.66	229.02	4,300.0	-2.0	-2.3	-2.0	2.00	2.00	0.00
4,400.0	4.66	229.02	4,399.7	-6.2	-7.1	-6.2	2.00	2.00	0.00
4,500.0	6.66	229.02	4,499.3	-12.7	-14.6	-12.7	2.00	2.00	0.00
4,551.2	7.68	229.02	4,550.0	-16.9	-19.4	-16.9	2.00	2.00	0.00
SUSSEX									
4,581.9	8.30	229.02	4,580.4	-19.7	-22.6	-19.7	2.00	2.00	0.00
Hold 8.30° Inc									

Planning Report

Database:	EDT_32Bit_ODBC	Local Co-ordinate Reference:	Well AD-DAIRY C6-20-24
Company:	EXTRACTION OIL & GAS	TVD Reference:	KB-EST @ 4654.0usft (Original Well Elev)
Project:	Weld County	MD Reference:	KB-EST @ 4654.0usft (Original Well Elev)
Site:	Sec 21-T5N-R65W	North Reference:	True
Well:	AD-DAIRY C6-20-24	Survey Calculation Method:	Minimum Curvature
Wellbore:	ORIGINAL WELLBORE		
Design:	PROPOSAL #1		

Planned Survey									
Measured Depth (usft)	Inclination (°)	Azimuth (°)	Vertical Depth (usft)	+N/-S (usft)	+E/-W (usft)	Vertical Section (usft)	Dogleg Rate (°/100ft)	Build Rate (°/100ft)	Turn Rate (°/100ft)
4,600.0	8.30	229.02	4,598.4	-21.4	-24.6	-21.4	0.00	0.00	0.00
4,700.0	8.30	229.02	4,697.3	-30.8	-35.5	-30.8	0.00	0.00	0.00
4,800.0	8.30	229.02	4,796.3	-40.3	-46.4	-40.3	0.00	0.00	0.00
4,900.0	8.30	229.02	4,895.2	-49.8	-57.3	-49.8	0.00	0.00	0.00
5,000.0	8.30	229.02	4,994.2	-59.2	-68.2	-59.2	0.00	0.00	0.00
5,066.5	8.30	229.02	5,060.0	-65.5	-75.4	-65.5	0.00	0.00	0.00
SHANNON									
5,100.0	8.30	229.02	5,093.1	-68.7	-79.1	-68.7	0.00	0.00	0.00
5,200.0	8.30	229.02	5,192.1	-78.2	-90.0	-78.2	0.00	0.00	0.00
5,300.0	8.30	229.02	5,291.0	-87.6	-100.9	-87.6	0.00	0.00	0.00
5,400.0	8.30	229.02	5,390.0	-97.1	-111.8	-97.1	0.00	0.00	0.00
5,500.0	8.30	229.02	5,488.9	-106.6	-122.7	-106.6	0.00	0.00	0.00
5,600.0	8.30	229.02	5,587.9	-116.0	-133.6	-116.0	0.00	0.00	0.00
5,700.0	8.30	229.02	5,686.8	-125.5	-144.4	-125.5	0.00	0.00	0.00
5,800.0	8.30	229.02	5,785.8	-135.0	-155.3	-135.0	0.00	0.00	0.00
5,900.0	8.30	229.02	5,884.8	-144.4	-166.2	-144.4	0.00	0.00	0.00
6,000.0	8.30	229.02	5,983.7	-153.9	-177.1	-153.9	0.00	0.00	0.00
6,100.0	8.30	229.02	6,082.7	-163.4	-188.0	-163.4	0.00	0.00	0.00
6,200.0	8.30	229.02	6,181.6	-172.8	-198.9	-172.8	0.00	0.00	0.00
6,300.0	8.30	229.02	6,280.6	-182.3	-209.8	-182.3	0.00	0.00	0.00
6,400.0	8.30	229.02	6,379.5	-191.7	-220.7	-191.7	0.00	0.00	0.00
6,500.0	8.30	229.02	6,478.5	-201.2	-231.6	-201.2	0.00	0.00	0.00
6,600.0	8.30	229.02	6,577.4	-210.7	-242.5	-210.7	0.00	0.00	0.00
6,700.0	8.30	229.02	6,676.4	-220.1	-253.4	-220.1	0.00	0.00	0.00
6,735.2	8.30	229.02	6,711.2	-223.5	-257.2	-223.5	0.00	0.00	0.00
KOP, Build 10°/100'									
6,750.0	9.45	235.06	6,725.8	-224.9	-259.0	-224.9	10.00	7.78	40.80
6,800.0	13.81	247.46	6,774.8	-229.5	-267.9	-229.5	10.00	8.72	24.79
6,850.0	18.49	253.84	6,822.8	-234.0	-281.0	-234.0	10.00	9.36	12.76
6,895.1	22.83	257.37	6,865.0	-237.9	-296.5	-237.9	10.00	9.61	7.84
SHARON SPRINGS									
6,900.0	23.30	257.68	6,869.5	-238.3	-298.3	-238.3	10.00	9.69	6.29
6,922.5	25.49	258.96	6,890.0	-240.2	-307.4	-240.2	10.00	9.72	5.67
NIOBRARA									
6,950.0	28.18	260.26	6,914.5	-242.4	-319.6	-242.4	10.00	9.77	4.75
7,000.0	33.09	262.13	6,957.6	-246.3	-344.8	-246.3	10.00	9.82	3.74
7,050.0	38.02	263.57	6,998.2	-249.9	-373.6	-249.9	10.00	9.86	2.87
7,100.0	42.96	264.72	7,036.2	-253.2	-405.9	-253.2	10.00	9.89	2.30
7,150.0	47.91	265.67	7,071.3	-256.2	-441.4	-256.2	10.00	9.91	1.91
7,200.0	52.87	266.48	7,103.2	-258.8	-479.8	-258.8	10.00	9.92	1.63
7,250.0	57.84	267.20	7,131.6	-261.1	-520.9	-261.1	10.00	9.93	1.43
7,300.0	62.81	267.84	7,156.3	-262.9	-564.3	-262.9	10.00	9.94	1.28
7,344.2	67.20	268.36	7,175.0	-264.3	-604.3	-264.3	10.00	9.94	1.18
FORT HAYS									
7,350.0	67.78	268.42	7,177.2	-264.4	-609.7	-264.4	10.00	9.95	1.13
7,400.0	72.75	268.97	7,194.1	-265.5	-656.7	-265.5	10.00	9.95	1.09
7,450.0	77.73	269.49	7,206.8	-266.1	-705.0	-266.1	10.00	9.95	1.03
7,465.8	79.31	269.64	7,210.0	-266.2	-720.6	-266.2	10.00	9.95	1.01
CODELL									
7,500.0	82.70	269.98	7,215.3	-266.3	-754.3	-266.3	10.00	9.95	0.99
7,550.0	87.68	270.47	7,219.5	-266.2	-804.1	-266.2	10.00	9.95	0.97
7,573.3	90.00	270.69	7,220.0	-265.9	-827.4	-265.9	10.00	9.95	0.97
LP @ 90° Inc, 270.69° Azm Hold									

Planning Report

Database:	EDT_32Bit_ODBC	Local Co-ordinate Reference:	Well AD-DAIRY C6-20-24
Company:	EXTRACTION OIL & GAS	TVD Reference:	KB-EST @ 4654.0usft (Original Well Elev)
Project:	Weld County	MD Reference:	KB-EST @ 4654.0usft (Original Well Elev)
Site:	Sec 21-T5N-R65W	North Reference:	True
Well:	AD-DAIRY C6-20-24	Survey Calculation Method:	Minimum Curvature
Wellbore:	ORIGINAL WELLBORE		
Design:	PROPOSAL #1		

Planned Survey									
Measured Depth (usft)	Inclination (°)	Azimuth (°)	Vertical Depth (usft)	+N/-S (usft)	+E/-W (usft)	Vertical Section (usft)	Dogleg Rate (°/100ft)	Build Rate (°/100ft)	Turn Rate (°/100ft)
7,600.0	90.00	270.69	7,220.0	-265.6	-854.1	-265.6	0.00	0.00	0.00
7,700.0	90.00	270.69	7,220.0	-264.4	-954.1	-264.4	0.00	0.00	0.00
7,800.0	90.00	270.69	7,220.0	-263.2	-1,054.1	-263.2	0.00	0.00	0.00
7,900.0	90.00	270.69	7,220.0	-262.0	-1,154.1	-262.0	0.00	0.00	0.00
8,000.0	90.00	270.69	7,220.0	-260.7	-1,254.1	-260.7	0.00	0.00	0.00
8,100.0	90.00	270.69	7,220.0	-259.5	-1,354.1	-259.5	0.00	0.00	0.00
8,200.0	90.00	270.69	7,220.0	-258.3	-1,454.0	-258.3	0.00	0.00	0.00
8,300.0	90.00	270.69	7,220.0	-257.1	-1,554.0	-257.1	0.00	0.00	0.00
8,400.0	90.00	270.69	7,220.0	-255.9	-1,654.0	-255.9	0.00	0.00	0.00
8,500.0	90.00	270.69	7,220.0	-254.7	-1,754.0	-254.7	0.00	0.00	0.00
8,600.0	90.00	270.69	7,220.0	-253.5	-1,854.0	-253.5	0.00	0.00	0.00
8,700.0	90.00	270.69	7,220.0	-252.3	-1,954.0	-252.3	0.00	0.00	0.00
8,800.0	90.00	270.69	7,220.0	-251.1	-2,054.0	-251.1	0.00	0.00	0.00
8,900.0	90.00	270.69	7,220.0	-249.8	-2,154.0	-249.8	0.00	0.00	0.00
9,000.0	90.00	270.69	7,220.0	-248.6	-2,254.0	-248.6	0.00	0.00	0.00
9,100.0	90.00	270.69	7,220.0	-247.4	-2,354.0	-247.4	0.00	0.00	0.00
9,200.0	90.00	270.69	7,220.0	-246.2	-2,454.0	-246.2	0.00	0.00	0.00
9,300.0	90.00	270.69	7,220.0	-245.0	-2,554.0	-245.0	0.00	0.00	0.00
9,400.0	90.00	270.69	7,220.0	-243.8	-2,654.0	-243.8	0.00	0.00	0.00
9,500.0	90.00	270.69	7,220.0	-242.6	-2,754.0	-242.6	0.00	0.00	0.00
9,600.0	90.00	270.69	7,220.0	-241.4	-2,853.9	-241.4	0.00	0.00	0.00
9,700.0	90.00	270.69	7,220.0	-240.2	-2,953.9	-240.2	0.00	0.00	0.00
9,800.0	90.00	270.69	7,220.0	-239.0	-3,053.9	-239.0	0.00	0.00	0.00
9,900.0	90.00	270.69	7,220.0	-237.7	-3,153.9	-237.7	0.00	0.00	0.00
10,000.0	90.00	270.69	7,220.0	-236.5	-3,253.9	-236.5	0.00	0.00	0.00
10,100.0	90.00	270.69	7,220.0	-235.3	-3,353.9	-235.3	0.00	0.00	0.00
10,200.0	90.00	270.69	7,220.0	-234.1	-3,453.9	-234.1	0.00	0.00	0.00
10,300.0	90.00	270.69	7,220.0	-232.9	-3,553.9	-232.9	0.00	0.00	0.00
10,400.0	90.00	270.69	7,220.0	-231.7	-3,653.9	-231.7	0.00	0.00	0.00
10,500.0	90.00	270.69	7,220.0	-230.5	-3,753.9	-230.5	0.00	0.00	0.00
10,600.0	90.00	270.69	7,220.0	-229.3	-3,853.9	-229.3	0.00	0.00	0.00
10,700.0	90.00	270.69	7,220.0	-228.1	-3,953.9	-228.1	0.00	0.00	0.00
10,800.0	90.00	270.69	7,220.0	-226.8	-4,053.9	-226.8	0.00	0.00	0.00
10,900.0	90.00	270.69	7,220.0	-225.6	-4,153.9	-225.6	0.00	0.00	0.00
11,000.0	90.00	270.69	7,220.0	-224.4	-4,253.8	-224.4	0.00	0.00	0.00
11,100.0	90.00	270.69	7,220.0	-223.2	-4,353.8	-223.2	0.00	0.00	0.00
11,200.0	90.00	270.69	7,220.0	-222.0	-4,453.8	-222.0	0.00	0.00	0.00
11,300.0	90.00	270.69	7,220.0	-220.8	-4,553.8	-220.8	0.00	0.00	0.00
11,400.0	90.00	270.69	7,220.0	-219.6	-4,653.8	-219.6	0.00	0.00	0.00
11,500.0	90.00	270.69	7,220.0	-218.4	-4,753.8	-218.4	0.00	0.00	0.00
11,600.0	90.00	270.69	7,220.0	-217.2	-4,853.8	-217.2	0.00	0.00	0.00
11,700.0	90.00	270.69	7,220.0	-215.9	-4,953.8	-215.9	0.00	0.00	0.00
11,800.0	90.00	270.69	7,220.0	-214.7	-5,053.8	-214.7	0.00	0.00	0.00
11,900.0	90.00	270.69	7,220.0	-213.5	-5,153.8	-213.5	0.00	0.00	0.00
12,000.0	90.00	270.69	7,220.0	-212.3	-5,253.8	-212.3	0.00	0.00	0.00
12,100.0	90.00	270.69	7,220.0	-211.1	-5,353.8	-211.1	0.00	0.00	0.00
12,200.0	90.00	270.69	7,220.0	-209.9	-5,453.8	-209.9	0.00	0.00	0.00
12,300.0	90.00	270.69	7,220.0	-208.7	-5,553.7	-208.7	0.00	0.00	0.00
12,400.0	90.00	270.69	7,220.0	-207.5	-5,653.7	-207.5	0.00	0.00	0.00
12,500.0	90.00	270.69	7,220.0	-206.3	-5,753.7	-206.3	0.00	0.00	0.00
12,600.0	90.00	270.69	7,220.0	-205.0	-5,853.7	-205.0	0.00	0.00	0.00
12,700.0	90.00	270.69	7,220.0	-203.8	-5,953.7	-203.8	0.00	0.00	0.00
19,898.7	90.00	270.69	7,220.0	-116.7	-13,151.8	-116.7	0.00	0.00	0.00

Planning Report

Database:	EDT_32Bit_ODBC	Local Co-ordinate Reference:	Well AD-DAIRY C6-20-24
Company:	EXTRACTION OIL & GAS	TVD Reference:	KB-EST @ 4654.0usft (Original Well Elev)
Project:	Weld County	MD Reference:	KB-EST @ 4654.0usft (Original Well Elev)
Site:	Sec 21-T5N-R65W	North Reference:	True
Well:	AD-DAIRY C6-20-24	Survey Calculation Method:	Minimum Curvature
Wellbore:	ORIGINAL WELLBORE		
Design:	PROPOSAL #1		

Planned Survey										
Measured Depth (usft)	Inclination (°)	Azimuth (°)	Vertical Depth (usft)	+N/-S (usft)	+E/-W (usft)	Vertical Section (usft)	Dogleg Rate (°/100ft)	Build Rate (°/100ft)	Turn Rate (°/100ft)	
TD at 19898.7' MD										

Formations						
Measured Depth (usft)	Vertical Depth (usft)	Name	Lithology	Dip (°)	Dip Direction (°)	
3,800.0	3,800.0	PARKMAN				
4,551.2	4,550.0	SUSSEX				
5,066.5	5,060.0	SHANNON				
6,895.1	6,865.0	SHARON SPRINGS				
6,922.5	6,890.0	NIOBRARA				
7,344.2	7,175.0	FORT HAYS				
7,465.8	7,210.0	CODELL				

Plan Annotations					
Measured Depth (usft)	Vertical Depth (usft)	Local Coordinates			
		+N/-S (usft)	+E/-W (usft)	Comment	
4,167.0	4,167.0	0.0	0.0	Build 2°/100'	
4,581.9	4,580.4	-19.7	-22.6	Hold 8.30° Inc	
6,735.2	6,711.2	-223.5	-257.2	KOP, Build 10°/100'	
7,573.3	7,220.0	-265.9	-827.4	LP @ 90° Inc, 270.69° Azm Hold	
19,898.7	7,220.0	-116.7	-13,151.8	TD at 19898.7' MD	