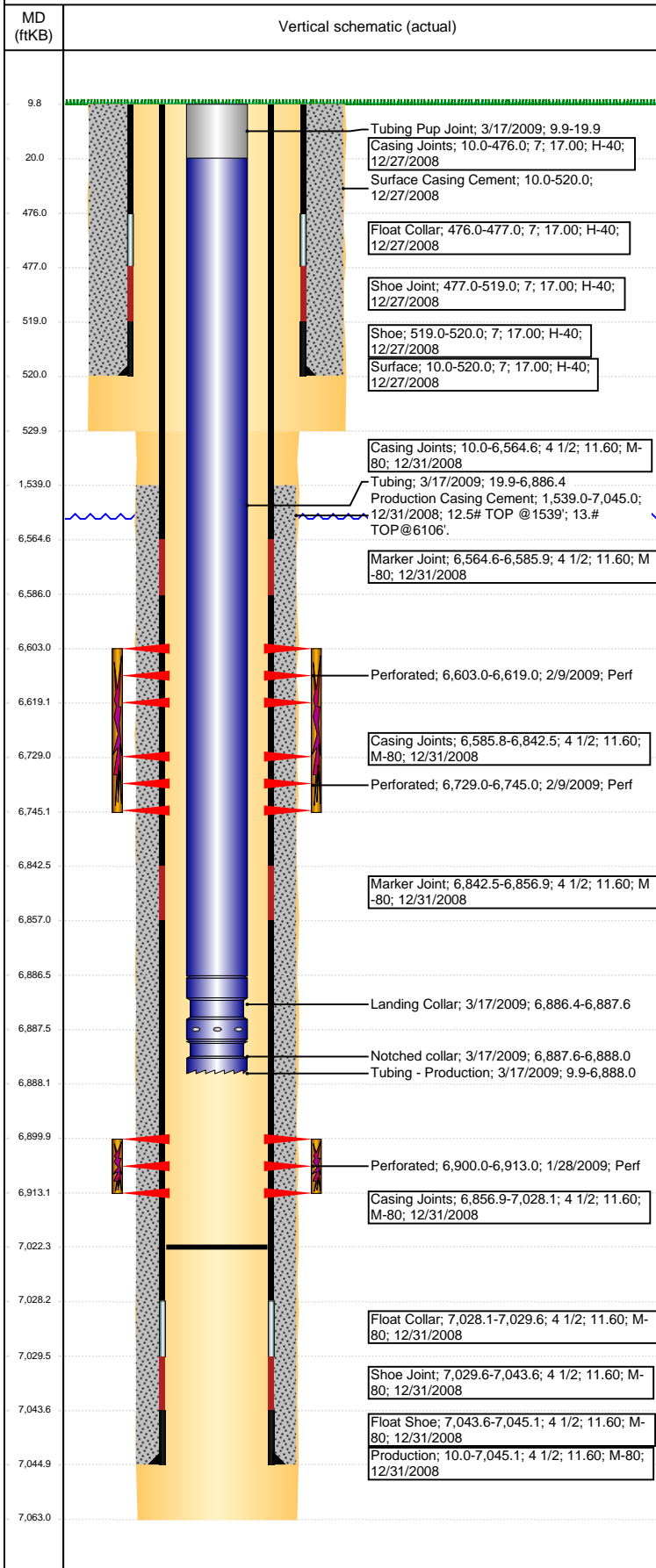


# Wellbore Schematic Input Report

**Well Name: DPG F12-27X**

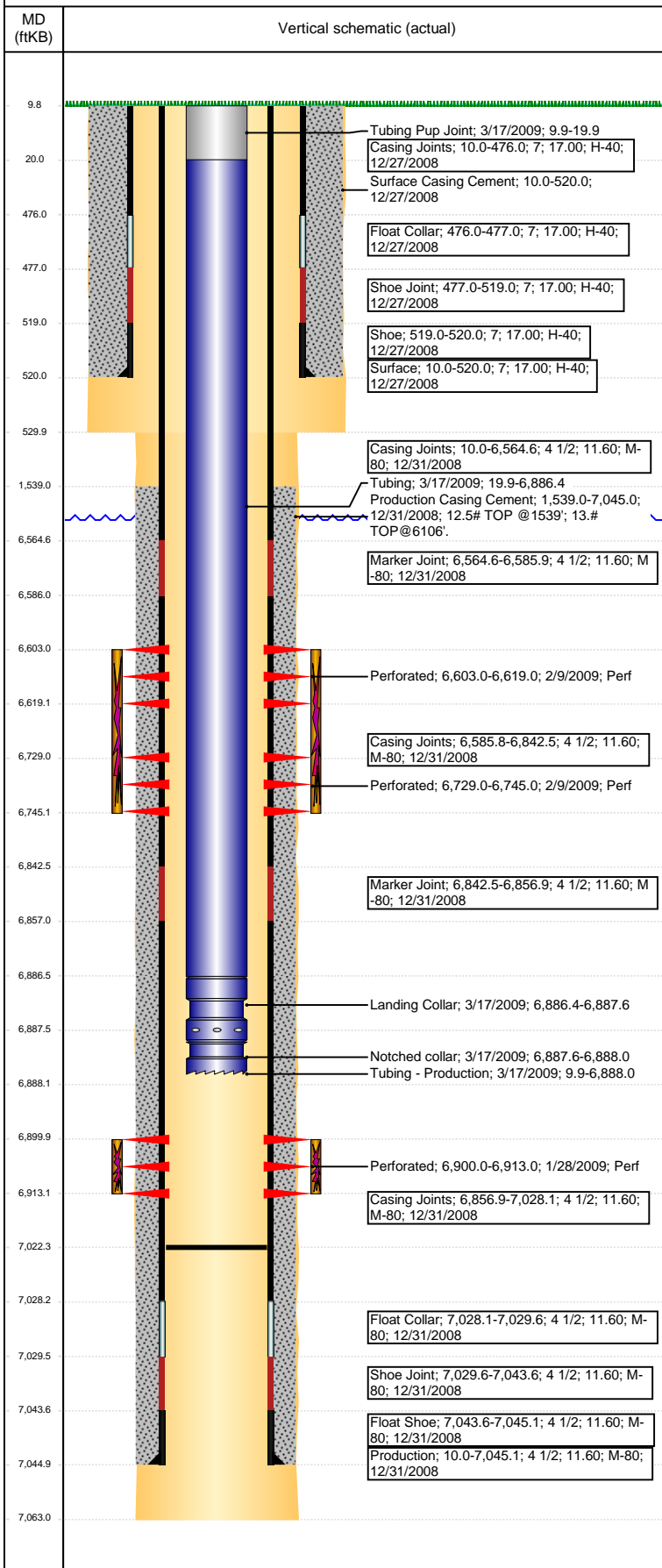
VERTICAL - ORIGINAL HOLE, 3/21/2017 4:32:54 PM



| Well Header  |  |                           |                         |                         |                         |                             |
|--|--|---------------------------|-------------------------|-------------------------|-------------------------|-----------------------------|
| API<br>05-123-29785  | Business Unit<br>DJ BASIN              |                           | District<br>15          |                         | Well Config<br>VERTICAL |                             |
| Original KB Elevation (ft)<br>4,613  | KB - GL / MSL (ftKB)<br>10.00          |                           | Spud Date<br>12/26/2008 |                         | P & A Date              |                             |
| Comment  |  |                           |                         |                         |                         |                             |
| Directions To Well<br>HOLLY STREET AND EAST 18TH, NORTHEAST 1.25 MILE, EAST 300 FT TO LOCATION |  |                           |                         |                         |                         |                             |
| Congressional Location   |  |                           |                         |                         |                         |                             |
| Quarter 3<br>NE  | Quarter 4<br>NE                        | Section<br>12             | Township<br>5           | Twntshp N/S Dir<br>N    | Range<br>65             | Range E/W Dir<br>W          |
| Bottom Hole Location   |  |                           |                         |                         |                         |                             |
| North-South Distance (ft)  |  | From N or S Line          |                         | East-West Distance (ft) |                         | From E or W Line            |
| Plug Back Total Depths   |  |                           |                         |                         |                         |                             |
| Date   | Depth (ftKB)                           | Method                    |                         | Com                     |                         |                             |
| 12/31/2008   | 7,028.0                                | CASING TALLY              |                         |                         |                         |                             |
| 1/27/2009  | 7,018.0                                | TAG                       |                         |                         |                         |                             |
| 2/13/2009  | 7,022.2                                | TAG                       |                         |                         |                         |                             |
| Wellbore Sections  |  |                           |                         |                         |                         |                             |
| Section Des  |  | Size (in)                 |                         | Act Top, MD (ftKB)      |                         | Act Btm, MD (ftKB)          |
| SURFACE  |  | 9 7/8                     |                         | 10                      |                         | 530                         |
| PRODUCTION   |  | 6 1/4                     |                         | 530                     |                         | 7,063                       |
| Zone Statuses  |  |                           |                         |                         |                         |                             |
| Zone Name  | Status Date                            | Status                    | Fluid Type              | Job                     | Prod Method             |                             |
| CODELL   | 2/10/2009                              | PR                        |                         | DRILLING/CO...          |                         |                             |
| NIOBRARA   | 2/10/2009                              | PR                        |                         | DRILLING/CO...          |                         |                             |
| Casing Strings   |  |                           |                         |                         |                         |                             |
| Surface, 520.0ftKB   |  |                           |                         |                         |                         |                             |
| Casing Description   | Run Date                               | OD (in)                   | Wt/Len (l...            | Grade                   | Top, MD (ft...          | MD (ftKB)                   |
| Surface  | 12/27/2008                             | 7                         | 17.00                   | H-40                    | 10.0                    | 520.0                       |
| Production, 7,045.1ftKB  |  |                           |                         |                         |                         |                             |
| Casing Description   | Run Date                               | OD (in)                   | Wt/Len (l...            | Grade                   | Top, MD (ft...          | MD (ftKB)                   |
| Production   | 12/31/2008                             | 4 1/2                     | 11.60                   | M-80                    | 10.0                    | 7,045.1                     |
| Cement   |  |                           |                         |                         |                         |                             |
| Description  |  |                           |                         | Top Depth (ftKB)        |                         | Bottom Depth (ftKB)         |
| Surface Casing Cement  |  |                           |                         | 10.0                    |                         | 520.0                       |
| Description  |  |                           |                         | Top Depth (ftKB)        |                         | Bottom Depth (ftKB)         |
| Production Casing Cement   |  |                           |                         | 1,539.0                 |                         | 7,045.0                     |
| Tubing Strings   |  |                           |                         |                         |                         |                             |
| Tubing Description   | Run Date                               | String...                 | ID (in)                 | Wt (lb/ft)              | Grade                   | Len (ft) Set De...          |
| Tubing - Production  | 3/17/2009                              | 2 3/8                     | 2.00                    | 4.70                    | J-55                    | 6,878.05                    |
| Tubing Components  |  |                           |                         |                         |                         |                             |
| Item Des   | OD (in)                                | Wt (lb/ft)                | Grade                   | Jts                     | Len (ft)                | Btm (ftKB) Btm (TVD) (ftKB) |
| Tubing Pup Joint   | 2 3/8                                  | 4.70                      | J-55                    | 1                       | 10.00                   | 19.9                        |
| Tubing   | 2 3/8                                  | 4.70                      | J-55                    | 224                     | 6,866.45                | 6,886.4                     |
| Landing Collar   | 2 3/8                                  | 4.70                      | N-80                    |                         | 1.20                    | 6,887.6                     |
| Notched collar   | 2 3/8                                  | 4.70                      | J-55                    |                         | 0.40                    | 6,888.0                     |
| Other In Hole  |  |                           |                         |                         |                         |                             |
| Run Date   | Des                                    |                           |                         | OD (in)                 | Top (ftKB)              | Btm (ftKB)                  |
|  |  |                           |                         |                         |                         |                             |
| Logs   |  |                           |                         |                         |                         |                             |
| Date   | Type                                   |                           |                         |                         | Top, MD (ftKB)          | Btm, MD (ftKB)              |
| 12/31/2008   | Caliper/Comp. Density/Neutron/GR/SP/ML |                           |                         |                         | 520.0                   | 7,065.0                     |
| 12/31/2008   | DIL/GR/SP/Caliper                      |                           |                         |                         | 520.0                   | 7,065.0                     |
| 1/28/2009  | CBL/CCL/GR                             |                           |                         |                         | 1,257.0                 | 7,006.0                     |
| 12/2/2015  | GYRO                                   |                           |                         |                         | 0.0                     | 6,850.0                     |
| Perforation Data   |  |                           |                         |                         |                         |                             |
| Linked Zone  | Bnch/St g                              | Sum of Entered Shot Total | Top (ftKB)              | Btm (ftKB)              | Date                    |                             |
| NIOBRARA, ORIGINAL HOLE  | A                                      | 32                        | 6,603.00                | 6,619.00                | 2/9/2009                |                             |
| NIOBRARA, ORIGINAL HOLE  | B                                      | 32                        | 6,729.00                | 6,745.00                | 2/9/2009                |                             |
| CODELL, ORIGINAL HOLE  |  | 52                        | 6,900.00                | 6,913.00                | 1/28/2009               |                             |

**Well Name: DPG F12-27X**

VERTICAL - ORIGINAL HOLE, 3/21/2017 4:32:56 PM



| Perforation Data   |              |  |            |                  |      |
|--|--------------|--|------------|------------------|------|
| Linked Zone  | Bnch/St<br>g | Sum of<br>Entered<br>Shot Total                    | Top (ftKB) | Btm (ftKB)       | Date |
| Total (Sum)  |              | 116  |            |                  |      |
| Stimulation Intervals  |              |  |            |                  |      |
| Start Date<br>2/9/2009   |              | Primary Job Type<br>DRILLING/COMPLETION - ORIGINAL |            |                  |      |
| Technical Result<br>Success  |              | Tech Result Details<br>According to Plan           |            | Tech Result Note |      |
| Comment<br>PRE-ISIP = 3054 PSI, 5-MIN = 2199 PSI. 18.22 of 52 Perfs Open, 381 NWB FRICTION, 68 PSI PERF FRICTION, TOTAL FRICTION = 786 PSI. POST JOB ISIP = 3590 PSI, 5-MIN = 3370 PSI.  |              |  |            |                  |      |
| Start Date<br>2/9/2009   |              | Primary Job Type<br>DRILLING/COMPLETION - ORIGINAL |            |                  |      |
| Technical Result<br>Success  |              | Tech Result Details<br>According to Plan           |            | Tech Result Note |      |
| Comment<br>15% HCL BREAKDOWN. PRE-ISIP (225 BBL) = 3366 PSI. TREATMENT EXHIBITED A FLAT PRESSURE RESPONSE. POST- ISIP = 3484 PSI, 5-MIN = 3336 PSI. TURN ON IN 15 MINUTES WITH 2800 PSI. |              |  |            |                  |      |