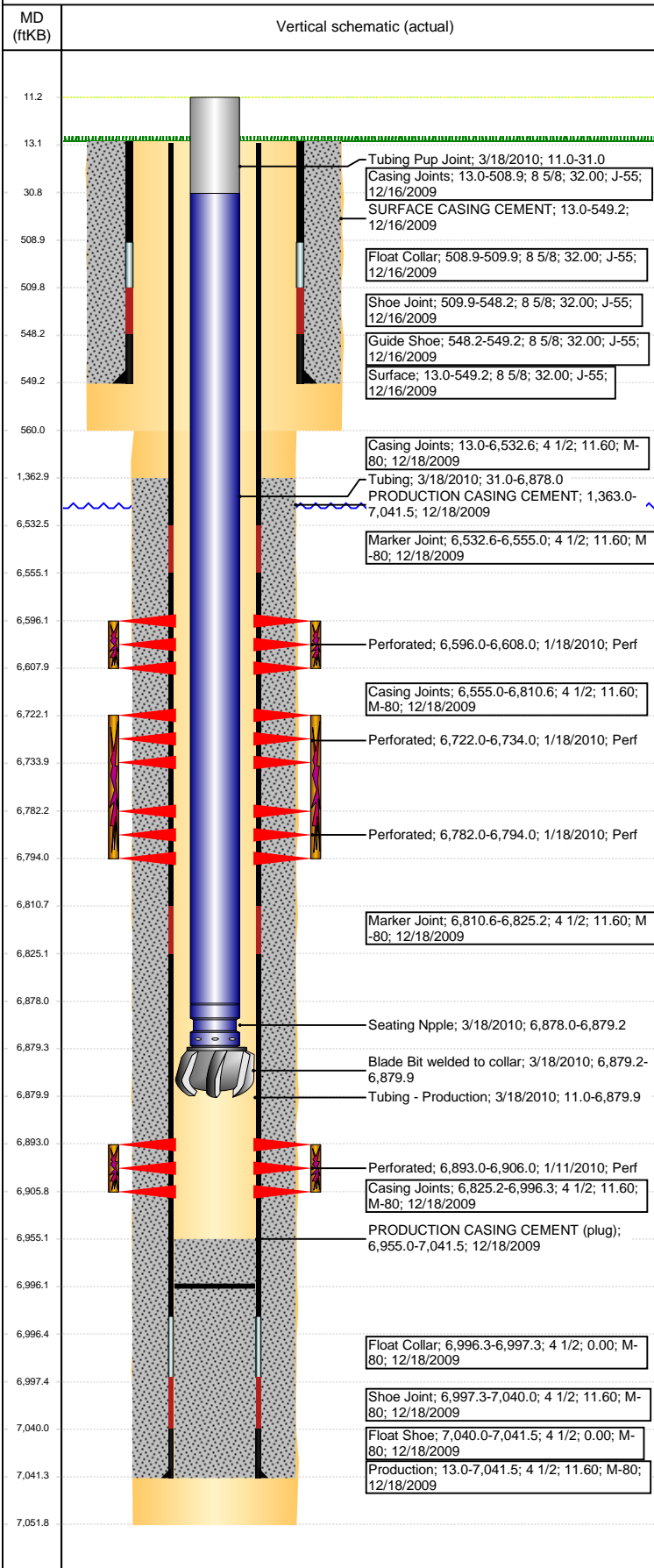


Well Name: DPG F12-17

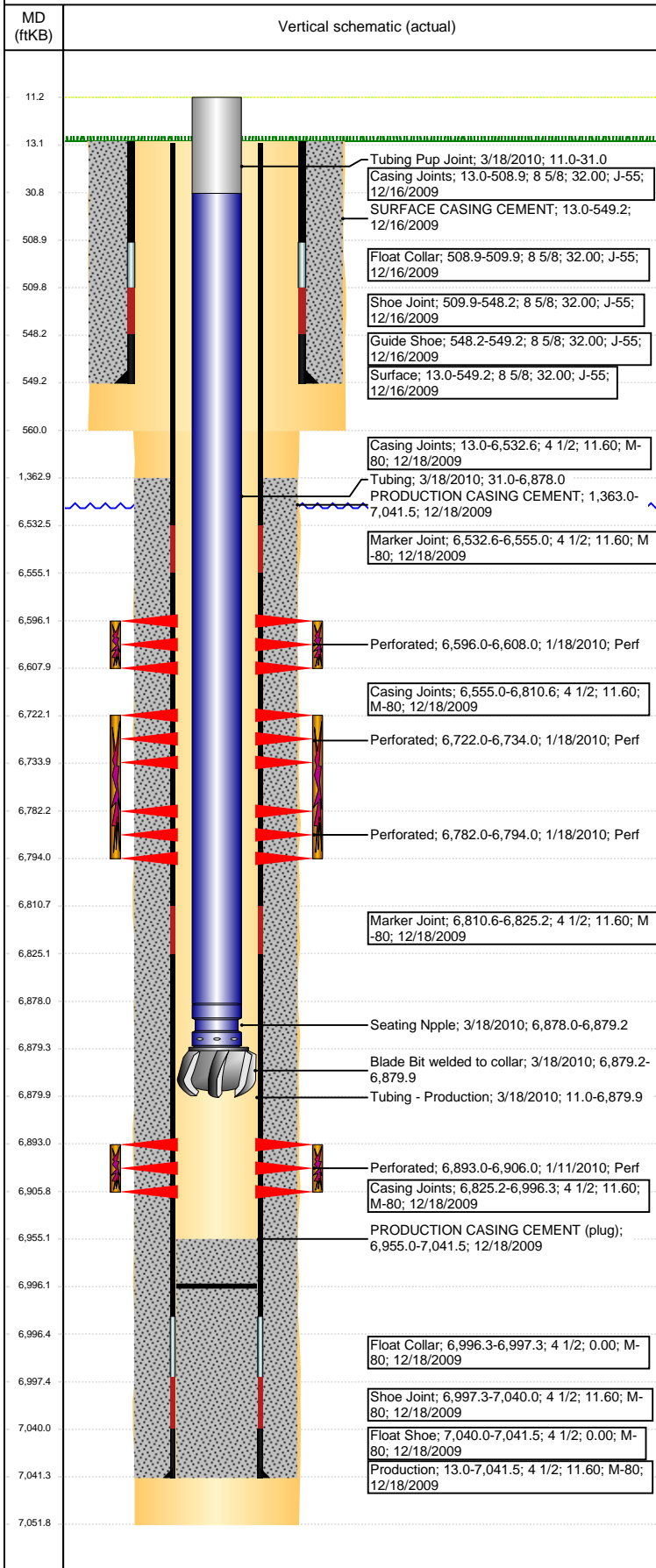
VERTICAL - ORIGINAL HOLE, 3/21/2017 3:47:54 PM



Well Header							
API	05-123-29786	Business Unit	DJ BASIN	District	15	Well Config	VERTICAL
Original KB Elevation (ft)	4,615	KB - GL / MSL (ftKB)	13.00	Spud Date	12/16/2009	P & A Date	
Comment							
PARTNERS INVOLVED.							
Directions To Well							
FROM 18TH ST & HOLLY ST, GO NE 1/4 MILE, THEN EAST 1/4 MILE, THEN NE 1/2 MILE & FOLLOW FLAGS TO LOCATION							
Congressional Location							
Quarter 3	Quarter 4	Section	Township	TwNS Dir	Range	Range E/W Dir	
SE	NE	12	5	N	65	W	
Bottom Hole Location							
North-South Distance (ft)		From N or S Line		East-West Distance (ft)		From E or W Line	
Plug Back Total Depths							
Date	Depth (ftKB)	Method		Com			
12/18/2009	6,996.3	CASING TALLY					
1/11/2010	6,955.0	CASED HOLE LOG					
3/18/2010	6,996.0	TBG TALLY					
Wellbore Sections							
Section Des		Size (in)	Act Top, MD (ftKB)	Act Btm, MD (ftKB)			
SURFACE		12 1/4	13	560			
PRODUCTION		7 7/8	560	7,052			
Zone Statuses							
Zone Name	Status Date	Status	Fluid Type	Job	Prod Method		
CODELL	1/2/2010	PR	Water		Flowing		
CODELL	1/20/2010	PR		DRILLING/CO...			
CODELL	2/9/2017	SI					
NIOBRARA	1/2/2010	PR	Water		Flowing		
NIOBRARA	1/20/2010	PR		DRILLING/CO...			
Casing Strings							
Surface, 549.2ftKB							
Casing Description	Run Date	OD (in)	Wt/Len (l...)	Grade	Top, MD (ft...)	MD (ftKB)	
Surface	12/16/2009	8 5/8	32.00	J-55	13.0	549.2	
Production, 7,041.5ftKB							
Casing Description	Run Date	OD (in)	Wt/Len (l...)	Grade	Top, MD (ft...)	MD (ftKB)	
Production	12/18/2009	4 1/2	11.60	M-80	13.0	7,041.5	
Cement							
Description				Top Depth (ftKB)	Bottom Depth (ftKB)		
SURFACE CASING CEMENT				13.0	549.2		
Description				Top Depth (ftKB)	Bottom Depth (ftKB)		
PRODUCTION CASING CEMENT				1,363.0	7,041.5		
Tubing Strings							
Tubing Description	Run Date	String... ID (in)	Wt (lb/ft)	Grade	Len (ft)	Set De...	
Tubing - Production	3/18/2010	2 3/8	2.00	J-55	6,868.94	6,879.5	
Tubing Components							
Item Des	OD (in)	Wt (lb/ft)	Grade	Jts	Len (ft)	Btm (ftKB)	Btm (TVD) (ftKB)
Tubing Pup Joint	2 3/8	4.70	J-55	2	20.00	31.0	31.0
Tubing	2 3/8	4.70	J-55	223	6,846.99	6,878.0	6,877.6
Seating Nipple	2 3/8	5.40	J-55	1	1.20	6,879.2	6,878.8
Blade Bit welded to collar	3 7/8		J-55	1	0.75	6,879.9	6,879.5
Other In Hole							
Run Date	Des			OD (in)	Top (ftKB)	Btm (ftKB)	
Logs							
Date	Type				Top, MD (ftKB)	Btm, MD (ftKB)	
12/18/2009	Caliper/Comp. Density/Neutron/GR/SP/ML				2,480.0	7,039.0	
12/18/2009	DIL/GR/SP/Caliper				550.0	7,039.0	
1/11/2010	CBL/CCL/GR/VDL				1,200.0	6,955.0	
12/2/2015	GYRO				0.0	6,800.0	

Well Name: DPG F12-17

VERTICAL - ORIGINAL HOLE, 3/21/2017 3:47:57 PM



Perforation Data					
Linked Zone	Bnch/St g	Sum of Entered Shot Total	Top (ftKB)	Btm (ftKB)	Date
NIOBRARA, ORIGINAL HOLE	A	48	6,596.00	6,608.00	1/18/2010
NIOBRARA, ORIGINAL HOLE	B	48	6,722.00	6,734.00	1/18/2010
NIOBRARA, ORIGINAL HOLE	C	48	6,782.00	6,794.00	1/18/2010
CODELL, ORIGINAL HOLE	1	52	6,893.00	6,906.00	1/11/2010
Total (Sum)		196			

Stimulation Intervals

Start Date 1/18/2010	Primary Job Type DRILLING/COMPLETION - ORIGINAL
-------------------------	--

Technical Result Success	Tech Result Details According to Plan	Tech Result Note
-----------------------------	--	------------------

Comment (CODELL): TOTALIZED 3% SHORT ON SAND. JOB WENT WELL WITH NO OTHER ISSUES TO REPORT.

Start Date 1/18/2010	Primary Job Type DRILLING/COMPLETION - ORIGINAL
-------------------------	--

Technical Result Success	Tech Result Details According to Plan	Tech Result Note
-----------------------------	--	------------------

Comment (NIOBRARA BC): TOTALIZED 3% SHORT ON SAND. SUB-CONTRACTOR FOR BJ HAULED THE WRONG SIZE SAND FOR THIS STAGE. SHOULD HAVE BEEN 30/50, WHEN AHEAD AND PUMPED THE 20/40 SAND THAT WAS DELIVERED.

Start Date 1/18/2010	Primary Job Type DRILLING/COMPLETION - ORIGINAL
-------------------------	--

Technical Result Success	Tech Result Details According to Plan	Tech Result Note
-----------------------------	--	------------------

Comment (NIOBRARA A): JOB WENT WELL WITH NO ISSUES TO REPORT.