

NOBLE ENERGY INC.
 DPG F 12-17
 SENE 12-5N-65W
 1435 FNL & 1250 FEL
 WELD COUNTY, CO
 Wattenberg
CURRENT WELLBORE SCHEMATIC
 with PROPOSED P&A
 3/9/2017

API: 05-123-29786
 COGCC #

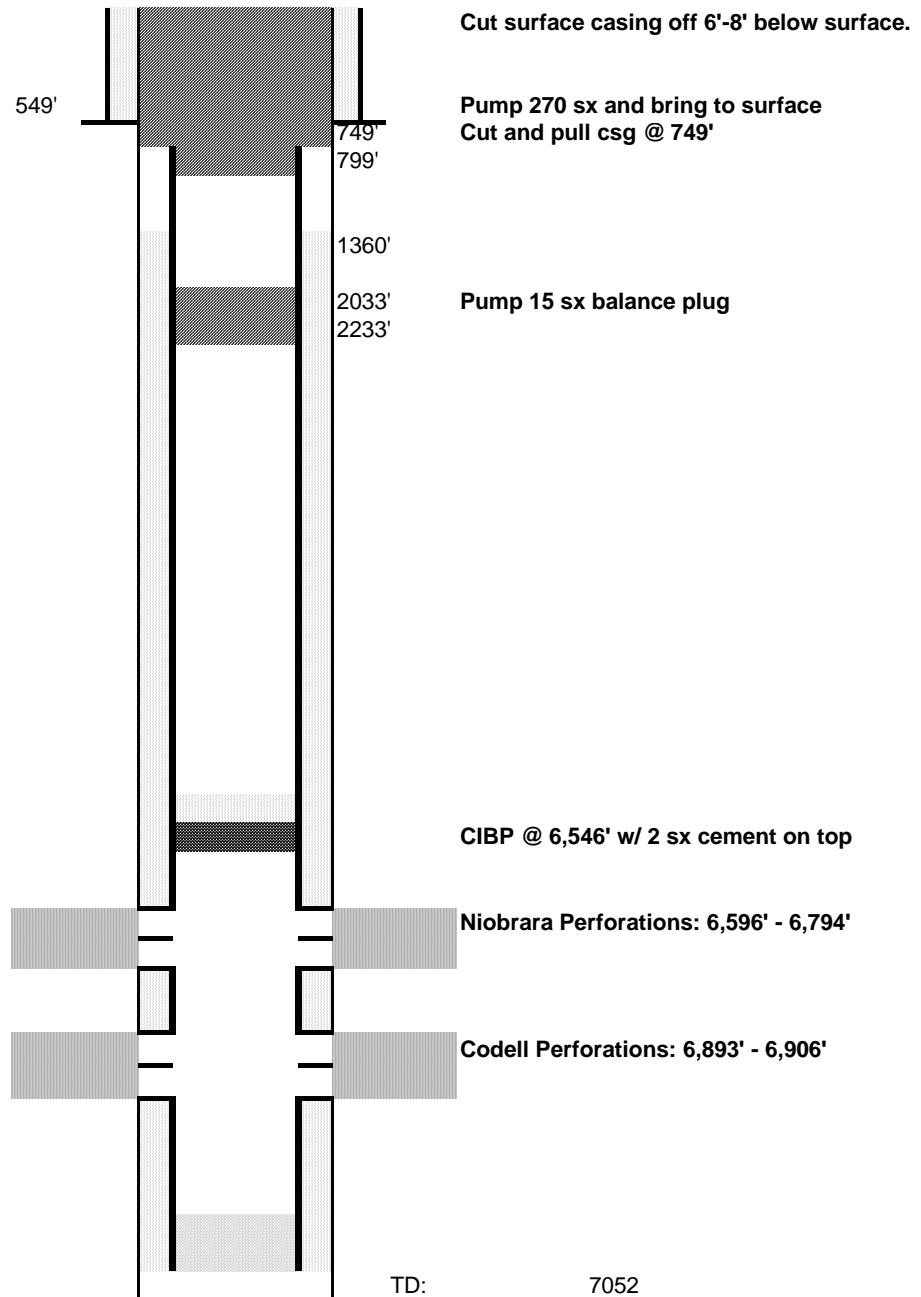
GL Elev: 4,602
 KB Elev: 4,615

Spud Date: 12/16/2009

Surface Casing :
 8-5/8", 32#, J-55 @ 549'
 Cement: 271 sx
 TOC: Surface

TOC: 1360'

Production Casing :
 4-1/2", M-80, 11.6# @ 7,042'
 Cement: 381 sx
 TD: 7052



TD: 7052