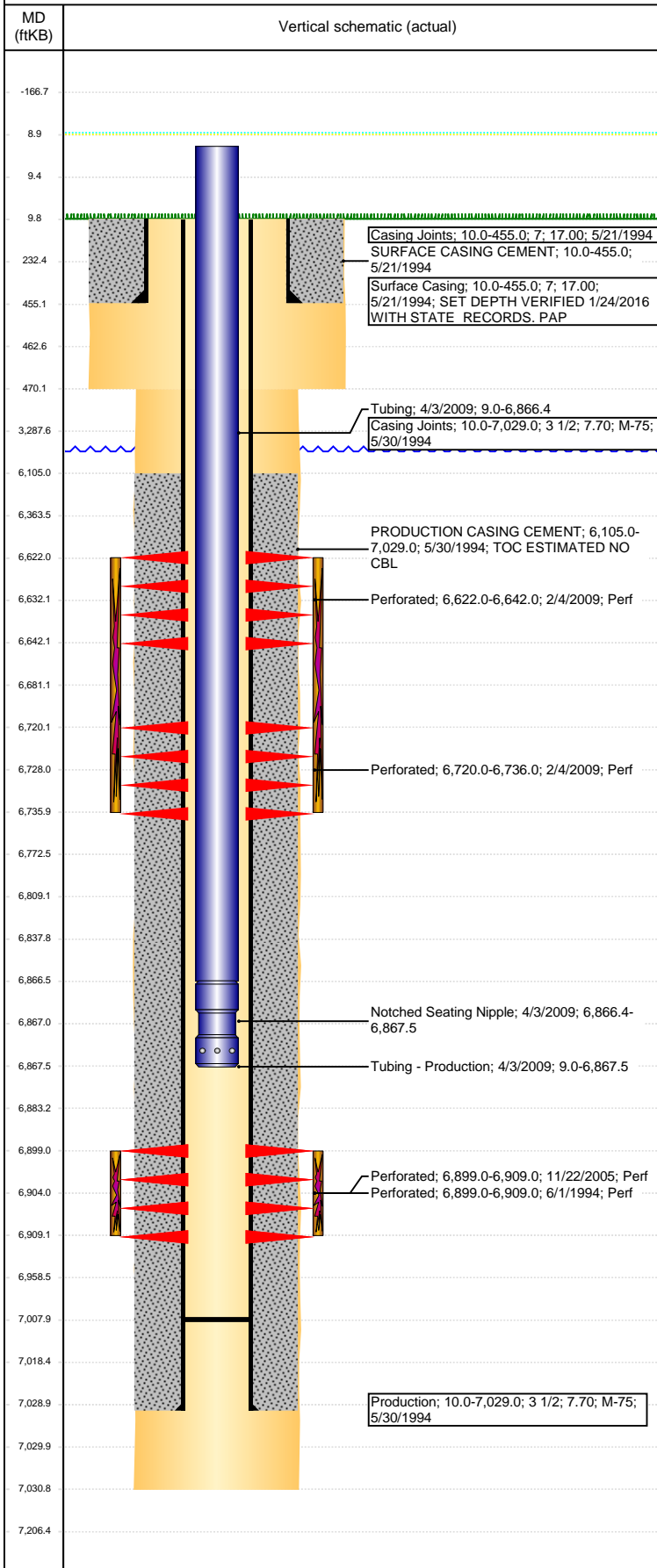


**Well Name: DPG BIRD FARM 01-16H5**

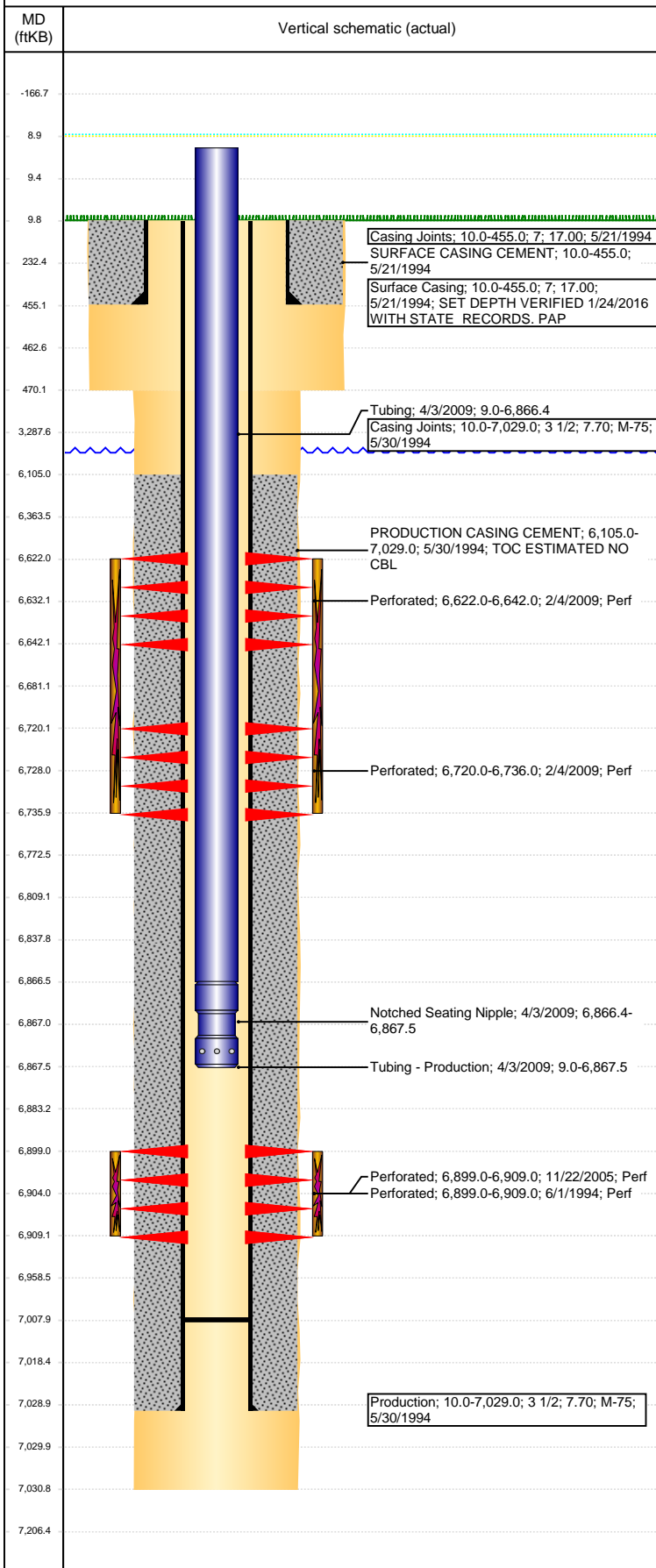
VERTICAL - ORIGINAL HOLE, 3/21/2017 3:04:16 PM



Well Header							
API 05-123-18176	Business Unit DJ BASIN	District 15	Well Config VERTICAL				
Original KB Elevation (ft) 4,612	KB - GL / MSL (ftKB) 10.00	Spud Date 5/20/1994	P & A Date				
Comment							
Directions To Well EAST GREELEY, 18TH ST. & HOLLY, N 0.2, E 0.7, N 0.1, NE 0.3, E INTO LOCATION.							
Congressional Location							
Quarter 3 SE	Quarter 4 SE	Section 1	Township 5	Twntshp N/S Dir N	Range 65	Range E/W Dir W	
Bottom Hole Location							
North-South Distance (ft)		From N or S Line		East-West Distance (ft)		From E or W Line	
Plug Back Total Depths							
Date	Depth (ftKB)	Method		Com			
5/30/1994	7,012.0						
4/2/2009	7,008.0	TUBING TALLY		CLEAN OUT SAND PLUG W/ 227 JTS, TAG PBTD			
Wellbore Sections							
Section Des		Size (in)		Act Top, MD (ftKB)		Act Btm, MD (ftKB)	
PRODUCTION		12 1/4		10		470	
SURFACE		7 7/8		470		7,031	
Zone Statuses							
Zone Name	Status Date	Status	Fluid Type	Job	Prod Method		
CODELL	6/18/1994	PR	Water	DRILLING/CO...	Flowing		
CODELL	12/16/2005	PR		RE-FRAC, 12/1...			
CODELL	2/2/2009	SI		RECOMPLETI...			
CODELL	4/7/2009	PR		RECOMPLETI...			
CODELL	2/4/2010	PR		RECOMPLETI...			
NIOBRARA	2/21/2009	PR	Water	RECOMPLETI...	Flowing		
NIOBRARA	4/7/2009	PR		RECOMPLETI...			
NIOBRARA	2/4/2010	PR		RECOMPLETI...			
NIOBRARA	11/29/2016	SI		RECOMPLETI...			
Casing Strings							
Surface Casing, 455.0ftKB							
Casing Description Surface Casing	Run Date 5/21/1994	OD (in) 7	Wt/Len (l... 17.00	Grade	Top, MD (ft... 10.0	MD (ftKB) 455.0	
Production, 7,029.0ftKB							
Casing Description Production	Run Date 5/30/1994	OD (in) 3 1/2	Wt/Len (l... 7.70	Grade M-75	Top, MD (ft... 10.0	MD (ftKB) 7,029.0	
Cement							
Description SURFACE CASING CEMENT				Top Depth (ftKB) 10.0		Bottom Depth (ftKB) 455.0	
Description PRODUCTION CASING CEMENT				Top Depth (ftKB) 6,105.0		Bottom Depth (ftKB) 7,029.0	
Tubing Strings							
Tubing Description Tubing	Run Date 10/10/2005	String... 2 1/16	ID (in)	Wt (lb/ft) 3.25	Grade J-55	Len (ft) 6,846.00	Set De...
Tubing Description Tubing	Run Date 12/28/2005	String... 2 1/16	ID (in)	Wt (lb/ft) 3.25	Grade J-55	Len (ft) 6,871.00	Set De...
Tubing Description Tubing - Production	Run Date 4/3/2009	String... 2 1/16	ID (in) 1.75	Wt (lb/ft) 3.25	Grade J-55	Len (ft) 6,858.48	Set De...
Tubing Components							
Item Des	OD (in)	Wt (lb/ft)	Grade	Jts	Len (ft)	Btm (ftKB)	Btm (TVD) (ftKB)
Tubing	2 1/16	3.25	J-55	219	6,857.38	6,866.4	
Notched Seating Nipple	2 1/16			1	1.10	6,867.5	
Other In Hole							
Run Date	Des			OD (in)	Top (ftKB)	Btm (ftKB)	
Logs							
Date	Type				Top, MD (ftKB)	Btm, MD (ftKB)	
5/30/1994	INDUCTION				462.0	7,029.0	

**Well Name: DPG BIRD FARM 01-16H5**

VERTICAL - ORIGINAL HOLE, 3/21/2017 3:04:19 PM



Logs					
Date		Type		Top, MD (ftKB)	Btm, MD (ftKB)
6/1/1994		PFC		6,500.0	6,985.0
Perforation Data					
Linked Zone	Bnch/St g	Sum of Entered Shot Total	Top (ftKB)	Btm (ftKB)	Date
NIOBRARA, ORIGINAL HOLE	A	80	6,622.00	6,642.00	2/4/2009
NIOBRARA, ORIGINAL HOLE	B	64	6,720.00	6,736.00	2/4/2009
CODELL, ORIGINAL HOLE		20	6,899.00	6,909.00	6/1/1994
CODELL, ORIGINAL HOLE		40	6,899.00	6,909.00	11/22/2005
Total (Sum)		204			
Stimulation Intervals					
Start Date		Primary Job Type			
6/6/1994		DRILLING/COMPLETION - ORIGINAL			
Technical Result		Tech Result Details		Tech Result Note	
Comment					
Start Date		Primary Job Type			
12/14/2005		RE-FRAC			
Technical Result		Tech Result Details		Tech Result Note	
Comment					
Start Date		Primary Job Type			
2/20/2009		RECOMPLETION			
Technical Result		Tech Result Details		Tech Result Note	
Success		According to Plan			
Comment					
(NIOBRARA): TREATMENT WENT WELL AVG VISC 17.2 CPS AVG TEMP 65.1F AVG PH 10.4 POST JOB 5 MINUTE OF 3408 PSI					