

NOBLE ENERGY INC.
 DPG Bird Farm 01-16H5
 SESE 1-5N-65W
 845 FSL & 767 FEL
 WELD COUNTY, CO
 Wattenberg
CURRENT WELLBORE SCHEMATIC
 with PROPOSED P&A
 3/13/2017

API: 05-123-18176
 COGCC #

GL Elev: 4,602
 KB Elev: 4,612

Spud Date: 5/20/1994

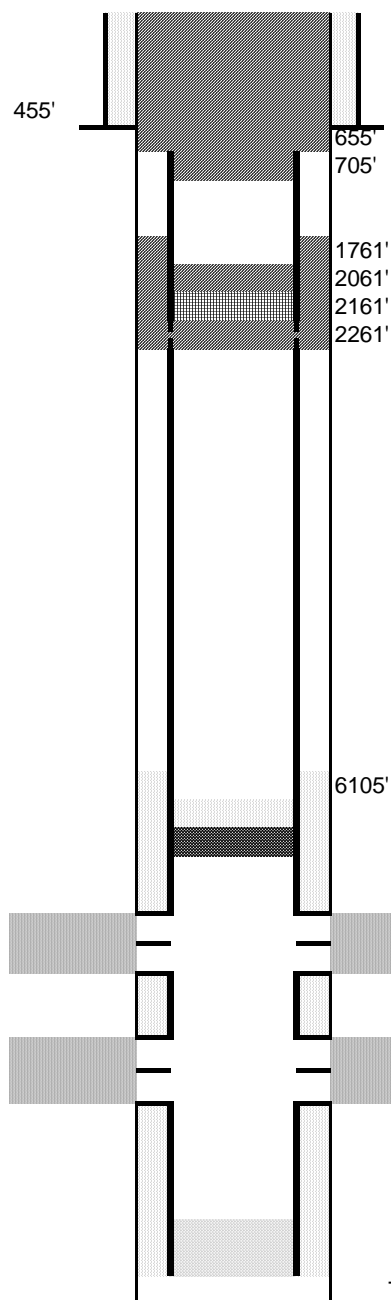
Surface Casing :

7", 17# @ 455'
 Cement: 62 sx
 TOC: Surface

TOC: NO CBL- TOC estimated

Production Casing :

3-1/2", M-75, 7.7# @ 7,029'
 Cement: 80 sx
 TD: 7031



Cut surface casing off 6'-8' below surface.

Pump 195 sx and bring to surface
 Cut and pull csg @ 655'

Pump 215 sx thru and 2 bbls (10 sx) on top
 Set CIGR @ 2,161'
 Perforate csg @ 2,261'

CIBP @ 6,572' w/ 2 sx cement on top

Niobrara Perforations: 6,622' - 6,736'

Codell Perforations: 6,899' - 6,909'

TD: 7031