

NOBLE ENERGY INC.
 DPG Bird Farm 12-01H5
 NENE 12-5N-65W
 727 FNL & 557 FEL
 WELD COUNTY, CO
 Wattenberg
CURRENT WELLBORE SCHEMATIC
 with PROPOSED P&A
 3/13/2017

API: 05-123-18251
 COGCC #

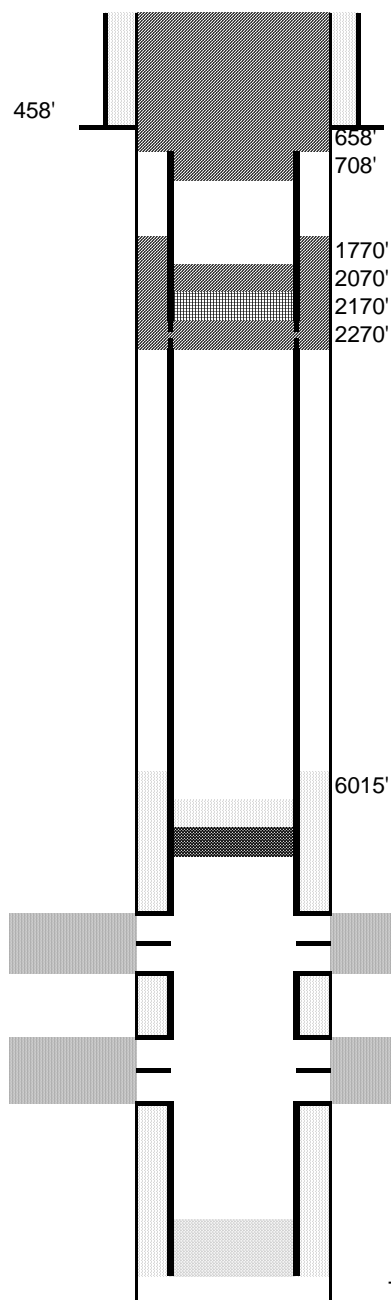
GL Elev: 4,602
 KB Elev: 4,612

Spud Date: 5/13/1994

Surface Casing :
 7", 17#, H-40 @ 458'
 Cement: 160 sx
 TOC: Surface

TOC: NO CBL- TOC estimated

Production Casing :
 3-1/2", B-70, 7.7# @ 7,014'
 Cement: 100 sx
 TD: 7020



Cut surface casing off 6'-8' below surface.

Pump 190 sx and bring to surface
 Cut and pull csg @ 658'

Pump 215 sx thru and 2 bbls (10 sx) on top
 Set CIGR @ 2,170'
 Perforate csg @ 2,270'

CIBP @ 6,558' w/ 2 sx cement on top

Niobrara Perforations: 6,608' - 6,728'

Codell Perforations: 6,892' - 6,905'

TD: 7020