

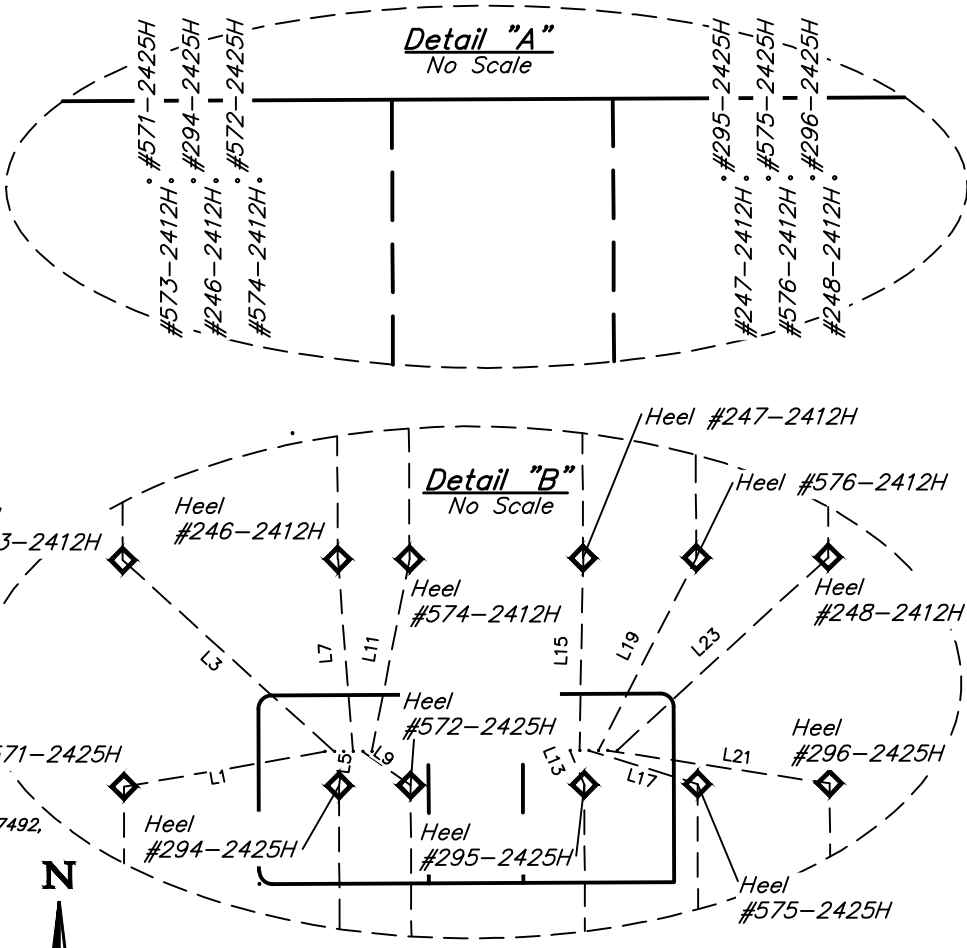
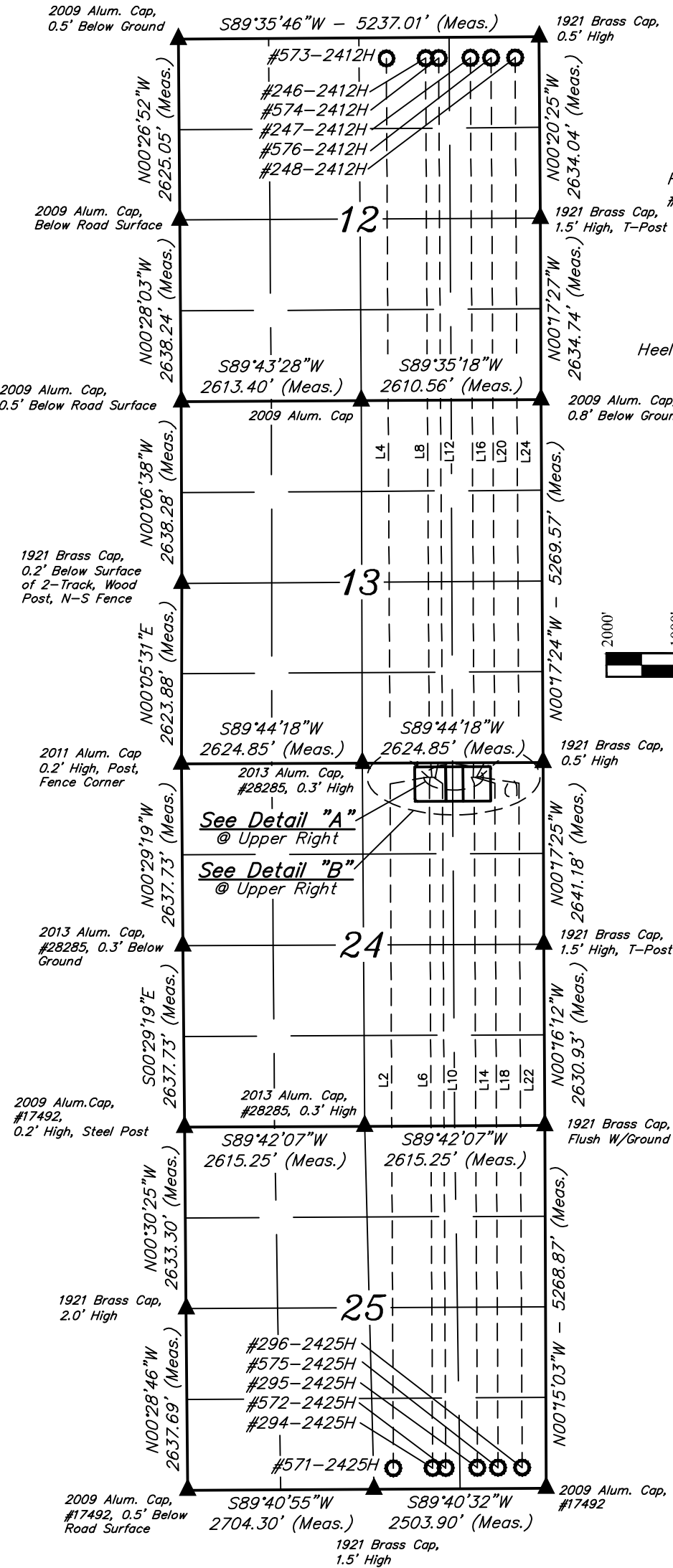
LEGEND:

- ◆ = HEEL.
- = TARGET BOTTOM HOLE.
- ▲ = SECTION CORNERS LOCATED. (NAD 83)

BASIS OF BEARINGS

BASIS OF BEARINGS IS A G.P.S. OBSERVATION

LINE TABLE			LINE TABLE			LINE TABLE		
LINE	DIRECTION	LENGTH	LINE	DIRECTION	LENGTH	LINE	DIRECTION	LENGTH
L1	S80°09'05"W	539.96'	L9	S55°03'20"E	156.08'	L17	S72°53'19"E	301.31'
L2	S00°15'55"E	9943.40'	L10	S00°15'55"E	9942.57'	L18	S00°15'55"E	9941.74'
L3	N47°49'12"W	755.75'	L11	N11°04'59"E	520.20'	L19	N26°57'14"E	573.48'
L4	N00°18'07"W	9932.85'	L12	N00°18'07"W	9934.73'	L20	N00°18'07"W	9936.61'
L5	S07°36'11"W	90.83'	L13	S22°55'48"E	97.55'	L21	S81°33'05"E	594.42'
L6	S00°15'55"E	9942.78'	L14	S00°15'55"E	9942.07'	L22	S00°15'55"E	9941.36'
L7	N04°30'27"W	511.52'	L15	N01°07'01"E	510.12'	L23	N47°31'47"E	759.16'
L8	N00°18'07"W	9934.26'	L16	N00°18'07"W	9935.87'	L24	N00°18'07"W	9937.48'



WELL	SHL FOOTAGES	SECTION	TOWNSHIP	RANGE
#248-2412H	210' FNL 913' FEL	24	11N	63W
#296-2425H	210' FNL 938' FEL	24	11N	63W
#576-2412H	210' FNL 963' FEL	24	11N	63W
#575-2425H	210' FNL 988' FEL	24	11N	63W
#247-2412H	210' FNL 1013' FEL	24	11N	63W
#295-2425H	210' FNL 1038' FEL	24	11N	63W
#574-2412H	210' FNL 1563' FEL	24	11N	63W
#572-2425H	210' FNL 1587' FEL	24	11N	63W
#246-2412H	210' FNL 1612' FEL	24	11N	63W
#294-2425H	210' FNL 1650' FEL	24	11N	63W
#573-2412H	210' FNL 1663' FEL	24	11N	63W
#571-2425H	210' FNL 1688' FEL	24	11N	63W

WELL	HEEL FOOTAGES	SECTION	TOWNSHIP	RANGE
#248-2412H	300' FSL 350' FEL	13	11N	63W
#296-2425H	300' FNL 350' FEL	24	11N	63W
#576-2412H	300' FSL 700' FEL	13	11N	63W
#575-2425H	300' FNL 700' FEL	24	11N	63W
#247-2412H	300' FSL 1000' FEL	13	11N	63W
#295-2425H	300' FNL 1000' FEL	24	11N	63W
#574-2412H	300' FSL 1460' FEL	13	11N	63W
#572-2425H	300' FNL 1460' FEL	24	11N	63W
#246-2412H	300' FSL 1650' FEL	13	11N	63W
#294-2425H	300' FNL 1650' FEL	24	11N	63W
#573-2412H	300' FSL 2220' FEL	13	11N	63W
#571-2425H	300' FNL 2220' FEL	24	11N	63W

WELL	BHL FOOTAGES	SECTION	TOWNSHIP	RANGE
#248-2412H	300' FNL 350' FEL	12	11N	63W
#296-2425H	300' FSL 350' FEL	25	11N	63W
#576-2412H	300' FNL 700' FEL	12	11N	63W
#575-2425H	300' FSL 700' FEL	25	11N	63W
#247-2412H	300' FNL 1000' FEL	12	11N	63W
#295-2425H	300' FSL 1000' FEL	25	11N	63W
#574-2412H	300' FNL 1460' FEL	12	11N	63W
#572-2425H	300' FSL 1460' FEL	25	11N	63W
#246-2412H	300' FNL 1650' FEL	12	11N	63W
#294-2425H	300' FSL 1650' FEL	25	11N	63W
#573-2412H	300' FNL 2220' FEL	12	11N	63W
#571-2425H	300' FSL 2220' FEL	25	11N	63W

REV: 3 02-28-17 C.D.L. (NAME CHANGE)

FIFTH CREEK ENERGY COMPANY, LLC

CRITTER CREEK 24 NE
N 1/2 NE 1/4 SECTION 24, T11N, R63W, 6th P.M.
WELD COUNTY, COLORADO

SURVEYED BY	JARED CHRISTOPHER, J.S.	02-08-17	SCALE
DRAWN BY	C.D.L.	04-10-15	1" = 2000'
MULTI-WELL PLAN		FIGURE #5	



UELS, LLC
Corporate Office * 85 South 200 East
Vernal, UT 84078 * (435) 789-1017