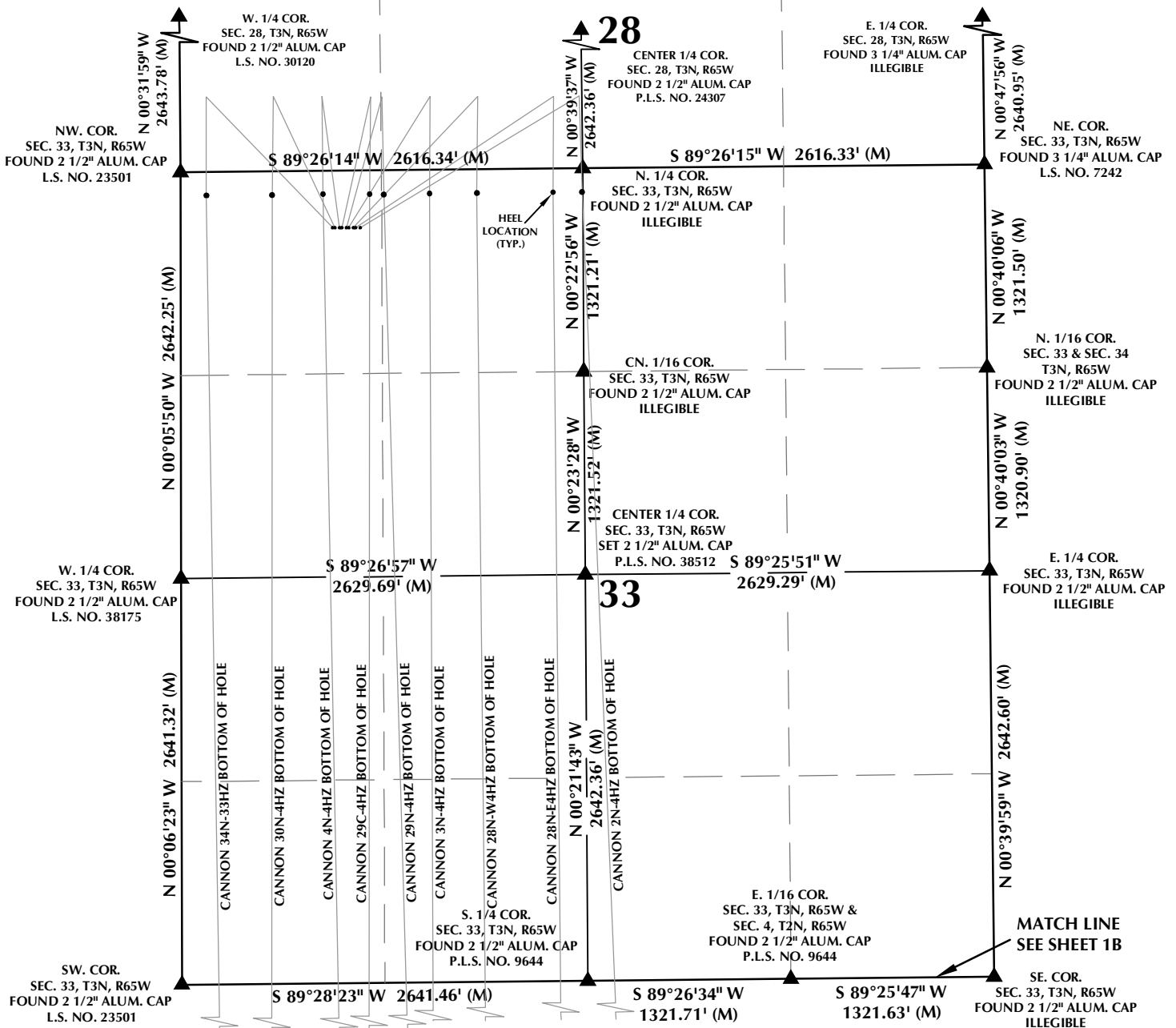


MULTI-WELL PLAN SECTIONS 28 & 33, T3N, R65W



WELL NOTES:
 CANNON 34N-33HZ
 SURFACE: 370' FNL, 989' FWL, SEC. 33, T3N, R65W
 BOTTOM HOLE: 362' FNL, 245' FWL, SEC. 4, T2N, R65W
 CANNON 30N-4HZ
 SURFACE: 370' FNL, 1004' FWL, SEC. 33, T3N, R65W
 BOTTOM HOLE: 312' FNL, 584' FWL, SEC. 4, T2N, R65W
 CANNON 4N-4HZ
 SURFACE: 370' FNL, 1034' FWL, SEC. 33, T3N, R65W
 BOTTOM HOLE: 362' FNL, 1025' FWL, SEC. 4, T2N, R65W
 CANNON 29C-4HZ
 SURFACE: 370' FNL, 1049' FWL, SEC. 33, T3N, R65W
 BOTTOM HOLE: 362' FNL, 1218' FWL, SEC. 4, T2N, R65W
 CANNON 29N-4HZ
 SURFACE: 370' FNL, 1079' FWL, SEC. 33, T3N, R65W
 BOTTOM HOLE: 363' FNL, 1471' FWL, SEC. 4, T2N, R65W
 CANNON 3N-4HZ
 SURFACE: 371' FNL, 1094' FWL, SEC. 33, T3N, R65W
 BOTTOM HOLE: 251' FNL, 1635' FWL, SEC. 4, T2N, R65W

WELL BORES CONTINUE INTO SECTION 4, T2N, R65W

CANNON 28N-W4HZ
 SURFACE: 371' FNL, 1124' FWL, SEC. 33, T3N, R65W
 BOTTOM HOLE: 252' FNL, 1974' FWL, SEC. 4, T2N, R65W
 CANNON 28N-E4HZ
 SURFACE: 371' FNL, 1139' FWL, SEC. 33, T3N, R65W
 BOTTOM HOLE: 253' FNL, 2467' FWL, SEC. 4, T2N, R65W
 CANNON 2N-4HZ
 SURFACE: 371' FNL, 1169' FWL, SEC. 33, T3N, R65W
 BOTTOM HOLE: 252' FNL, 2460' FWL, SEC. 4, T2N, R65W

NOTES:

- INDICATES SECTION CORNER
- INDICATES CALCULATED CORNER
- BASIS OF BEARING DERIVED FROM COLORADO COORDINATE SYSTEM OF 1983 NORTH ZONE.
- ALL MEASURED DISTANCES ARE GRID.
- COMBINED SCALE FACTOR: .99972912 CALCULATED FROM THE N. 1/4 CORNER OF SECTION 33, T3N, R65W
- WELL FOOTAGES ARE MEASURED AT RIGHT ANGLES TO THE SECTION LINES.

SCALE: 1" = 1000'

WELL PAD - CANNON 29N-4HZ

MULTI-WELL PLAN
 CANNON 34N-33HZ,
 CANNON 30N-4HZ, CANNON 4N-4HZ,
 CANNON 29C-4HZ, CANNON 29N-4HZ,
 CANNON 3N-4HZ, CANNON 28N-W4HZ,
 CANNON 28N-E4HZ & CANNON 2N-4HZ
 LOCATED IN SECTIONS 28 & 33, T3N, R65W, 6TH P.M.
 LOCATED IN SECTION 4, T2N, R65W, 6TH P.M.
 WELD COUNTY, COLORADO

**Kerr-McGee Oil &
 Gas Onshore L.P.**
 1099 18th Street
 Denver, Colorado 80202



CONSULTING, LLC

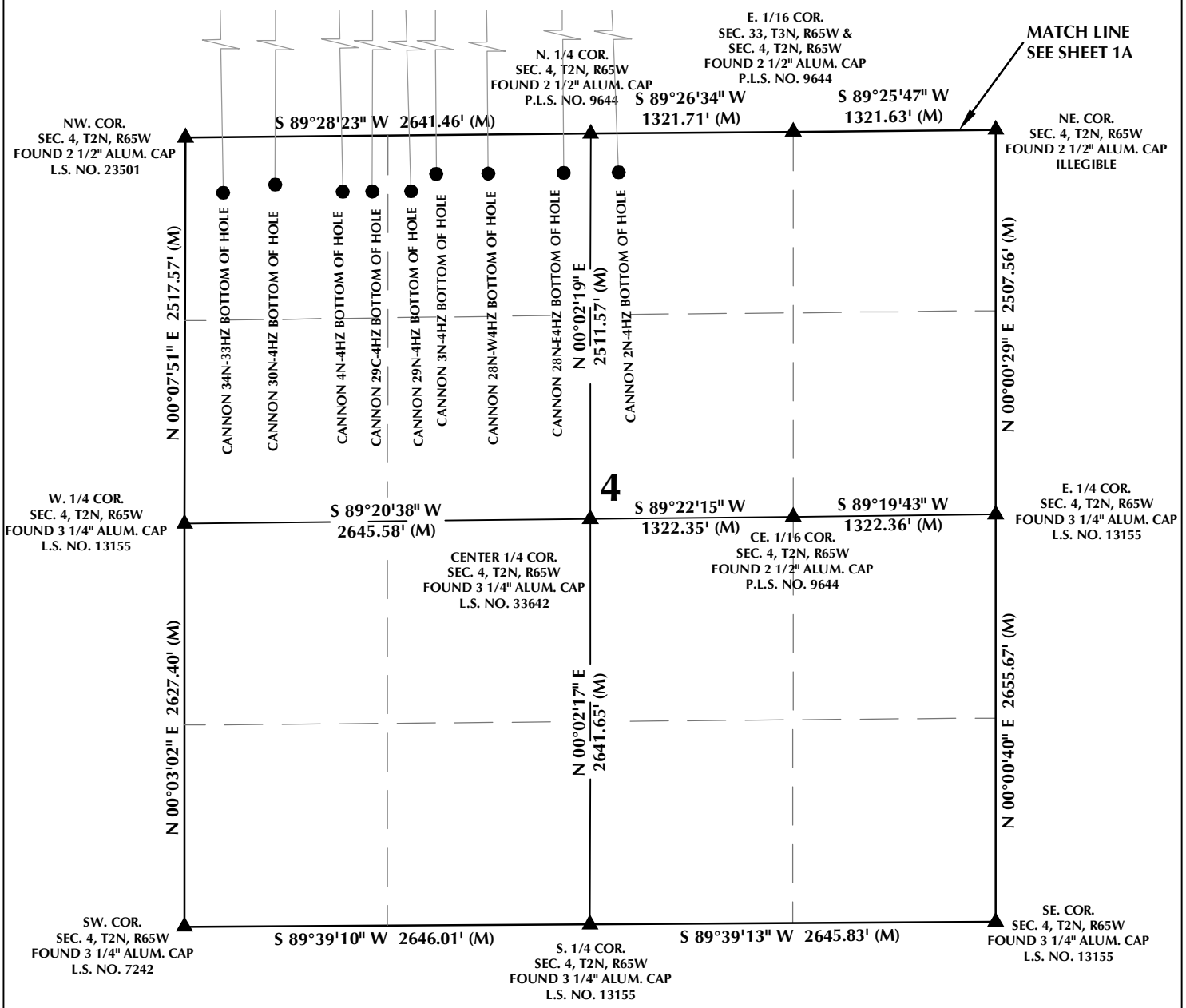
SHERIDAN OFFICE
 1095 Saberton Avenue
 Sheridan, Wyoming 82801
 Phone 307-674-0609

LOVELAND OFFICE
 1635 Foxtrail Drive, Suite 204
 Loveland, Colorado 80538
 Phone 970-776-4331

DRAFTED BY: LMO	CHECKED BY: RKF	SHEET NO: 1A 1A OF 1
DATE DRAFTED: 11/18/16	DATE SURVEYED: 9/15/16	
REVISED:	FILE NAME: 16-75	

K:\ADAR\2016\2016_75_CANNON_LAND_T3N_R65W_SEC_33\PLATS\CANNON_29N-4HZ\CANNON_29N-4HZ.MXD, 11/21/2016 3:36:39 PM, lbb

MULTI-WELL PLAN SECTION 4, T2N, R65W



WELL NOTES:

CANNON 34N-33HZ
 SURFACE: 370' FNL, 989' FWL, SEC. 33, T3N, R65W
 BOTTOM HOLE: 362' FNL, 245' FWL, SEC. 4, T2N, R65W

CANNON 30N-4HZ
 SURFACE: 370' FNL, 1004' FWL, SEC. 33, T3N, R65W
 BOTTOM HOLE: 312' FNL, 584' FWL, SEC. 4, T2N, R65W

CANNON 4N-4HZ
 SURFACE: 370' FNL, 1034' FWL, SEC. 33, T3N, R65W
 BOTTOM HOLE: 362' FNL, 1025' FWL, SEC. 4, T2N, R65W

CANNON 29C-4HZ
 SURFACE: 370' FNL, 1049' FWL, SEC. 33, T3N, R65W
 BOTTOM HOLE: 362' FNL, 1218' FWL, SEC. 4, T2N, R65W

CANNON 29N-4HZ
 SURFACE: 370' FNL, 1079' FWL, SEC. 33, T3N, R65W
 BOTTOM HOLE: 363' FNL, 1471' FWL, SEC. 4, T2N, R65W

CANNON 3N-4HZ
 SURFACE: 371' FNL, 1094' FWL, SEC. 33, T3N, R65W
 BOTTOM HOLE: 251' FNL, 1635' FWL, SEC. 4, T2N, R65W

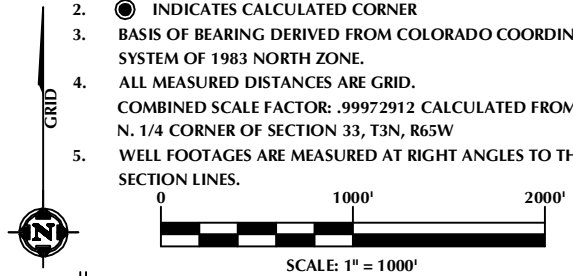
CANNON 28N-W4HZ
 SURFACE: 371' FNL, 1124' FWL, SEC. 33, T3N, R65W
 BOTTOM HOLE: 252' FNL, 1974' FWL, SEC. 4, T2N, R65W

CANNON 28N-E4HZ
 SURFACE: 371' FNL, 1139' FWL, SEC. 33, T3N, R65W
 BOTTOM HOLE: 253' FNL, 2467' FWL, SEC. 4, T2N, R65W

CANNON 2N-4HZ
 SURFACE: 371' FNL, 1169' FWL, SEC. 33, T3N, R65W
 BOTTOM HOLE: 252' FNL, 2460' FWL, SEC. 4, T2N, R65W

NOTES:

- ▲ INDICATES SECTION CORNER
- INDICATES CALCULATED CORNER
- BASIS OF BEARING DERIVED FROM COLORADO COORDINATE SYSTEM OF 1983 NORTH ZONE.
- ALL MEASURED DISTANCES ARE GRID.
- COMBINED SCALE FACTOR: .99972912 CALCULATED FROM THE N. 1/4 CORNER OF SECTION 33, T3N, R65W
- WELL FOOTAGES ARE MEASURED AT RIGHT ANGLES TO THE SECTION LINES.



WELL PAD - CANNON 29N-4HZ

MULTI-WELL PLAN
 CANNON 34N-33HZ,
 CANNON 30N-4HZ, CANNON 4N-4HZ,
 CANNON 29C-4HZ, CANNON 29N-4HZ,
 CANNON 3N-4HZ, CANNON 28N-W4HZ,
 CANNON 28N-E4HZ & CANNON 2N-4HZ
 LOCATED IN SECTIONS 28 & 33, T3N, R65W, 6TH P.M.
 LOCATED IN SECTION 4, T2N, R65W, 6TH P.M.
 WELD COUNTY, COLORADO

**Kerr-McGee Oil &
 Gas Onshore L.P.**
 1099 18th Street
 Denver, Colorado 80202



CONSULTING, LLC

SHERIDAN OFFICE
 1095 Saberton Avenue
 Sheridan, Wyoming 82801
 Phone 307-674-0609

LOVELAND OFFICE
 1635 Foxtrail Drive, Suite 204
 Loveland, Colorado 80538
 Phone 970-776-4331

DRAFTED BY: LMO	CHECKED BY: RKF	SHEET NO: 1B 1B OF 1
DATE DRAFTED: 11/18/16	DATE SURVEYED: 9/15/16	
REVISED:	FILE NAME: 16-75	

K:\ADAR\2016\2016_75_CANNON_LAND_T3N_R65W_SEC_33\PLATS\CANNON_29N-4HZ.MXD, 11/21/2016 3:34:43 PM, lbb