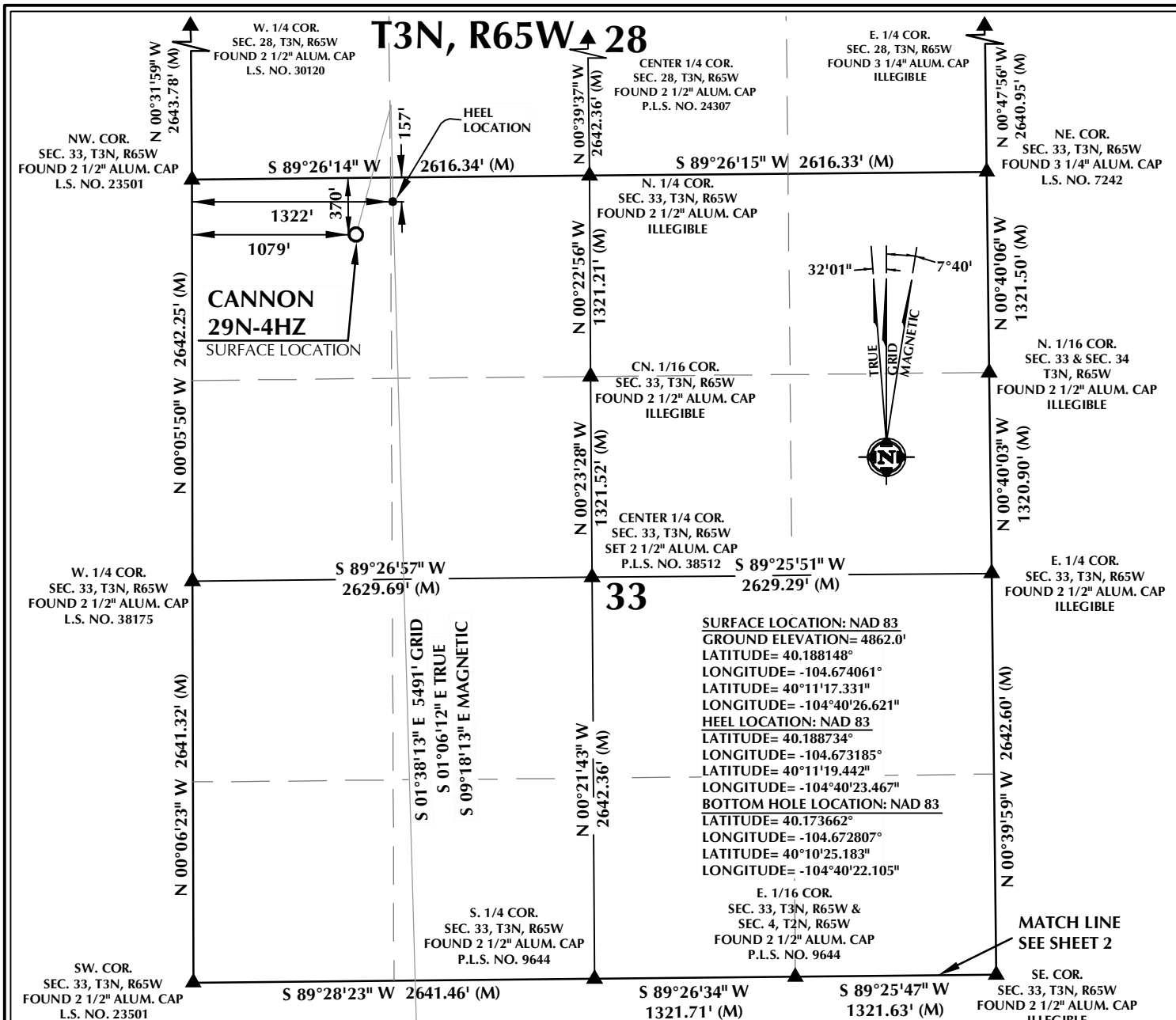


# T3N, R65W 28



### CERTIFICATE OF SURVEYOR:

THIS IS TO CERTIFY THAT THE ABOVE PLAT WAS PREPARED FROM FIELD NOTES OF ACTUAL SURVEY MADE BY ME OR UNDER MY SUPERVISION AND THAT THE SAME ARE TRUE AND CORRECT TO THE BEST OF MY KNOWLEDGE AND BELIEF. THIS CERTIFICATE DOES NOT REPRESENT A LAND SURVEY, PLAT OR IMPROVEMENT SURVEY PLAT AS DEFINED BY C.R.S. 38-51-302 AND CANNOT BE RELIED UPON TO DETERMINE OWNERSHIP.

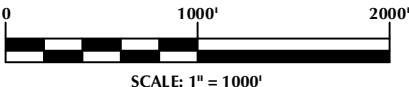
*Randall K. French*  
**RANDALL K. FRENCH**  
 PROFESSIONAL LAND SURVEYOR  
 COLORADO REGISTRATION NUMBER 38512  
 11/21/16

**NOTICE:**  
 ACCORDING TO COLORADO STATE LAW YOU MUST COMMENCE ANY LEGAL ACTION BASED UPON ANY DEFECT IN THIS SURVEY WITHIN THREE YEARS AFTER YOU FIRST DISCOVER SUCH DEFECT. IN NO EVENT MAY ANY ACTION BASED UPON ANY DEFECT IN THIS SURVEY BE COMMENCED MORE THAN TEN YEARS FROM THE DATE ON THE CERTIFICATION SHOWN HEREON.

WELL BORE  
 CONTINUES INTO  
 SECTION 4, T2N, R65W

### NOTES:

- ▲ INDICATES SECTION CORNER
- INDICATES CALCULATED CORNER
- ELEVATION BASED ON NAVD88 (GEOID12B)
- BASIS OF BEARING DERIVED FROM COLORADO COORDINATE SYSTEM OF 1983 NORTH ZONE.
- ALL MEASURED DISTANCES ARE GRID.
- COMBINED SCALE FACTOR: .99972912 CALCULATED FROM THE N. 1/4 CORNER OF SECTION 33
- OPERATOR: ROB WILSON / PDOP = 1.5
- SEE ADDENDUM TO WELL LOCATION CERTIFICATE FOR EXISTING IMPROVEMENTS WITHIN 500' OF THE WELL PAD.
- WELL FOOTAGES ARE MEASURED AT RIGHT ANGLES TO THE SECTION LINES.
- THE BOTTOM OF HOLE BEARS S01°38'13"E, 5491' FROM THE HEEL LOCATION.



**NOTE:**  
 MAGNETIC NORTH IS CURRENT AS OF 11/15/2016.  
 MAGNETIC NORTH CHANGES WEST 0°06' PER YEAR.

### WELL PAD - CANNON 29N-4HZ

CANNON 29N-4HZ  
 LOCATION CERTIFICATE  
 370' FNL & 1079' FWL NWNW (SURFACE)  
 157' FNL & 1322' FWL NENW (HEEL)  
 LOCATED IN SECTION 33  
 T3N, R65W, 6TH P.M.  
 363' FNL & 1471' FWL NENW (BOTTOM)  
 LOCATED IN SECTION 4  
 T2N, R65W, 6TH P.M.  
 WELD COUNTY, COLORADO

**Kerr-McGee Oil &  
 Gas Onshore L.P.**  
 1099 18th Street  
 Denver, Colorado 80202



### CONSULTING, LLC

**SHERIDAN OFFICE**  
 1095 Saberton Avenue  
 Sheridan, Wyoming 82801  
 Phone 307-674-0609

**LOVELAND OFFICE**  
 1635 Foxtrail Drive, Suite 204  
 Loveland, Colorado 80538  
 Phone 970-776-4331

DRAFTED BY: LMO	CHECKED BY: RKF	SHEET NO: <b>1</b> OF 2
DATE DRAFTED: 11/21/16	DATE SURVEYED: 9/15/16	
REVISED:	FILE NAME: 16-75	

# T2N, R65W

N. 1/4 COR.  
SEC. 4, T2N, R65W  
FOUND 2 1/2" ALUM. CAP  
P.L.S. NO. 9644

E. 1/16 COR.  
SEC. 33, T3N, R65W &  
SEC. 4, T2N, R65W  
FOUND 2 1/2" ALUM. CAP  
P.L.S. NO. 9644

S 89°26'34" W 1321.71' (M)

S 89°25'47" W 1321.63' (M)

MATCH LINE  
SEE SHEET 1

NW. COR.  
SEC. 4, T2N, R65W  
FOUND 2 1/2" ALUM. CAP  
L.S. NO. 23501

NE. COR.  
SEC. 4, T2N, R65W  
FOUND 2 1/2" ALUM. CAP  
ILLEGIBLE

N 00°07'51" E 2517.57' (M)

S 89°28'23" W 2641.46' (M)

1471'

1171'

BOTTOM OF HOLE:  
363' FNL & 1471' FWL

363'

824'

2151'

N 00°02'19" E  
2511.57' (M)

32°01'

7°40'



N 00°00'29" E 2507.56' (M)

W. 1/4 COR.  
SEC. 4, T2N, R65W  
FOUND 3 1/4" ALUM. CAP  
L.S. NO. 13155

S 89°20'38" W  
2645.58' (M)

4

S 89°22'15" W  
1322.35' (M)

S 89°19'43" W  
1322.36' (M)

E. 1/4 COR.  
SEC. 4, T2N, R65W  
FOUND 3 1/4" ALUM. CAP  
L.S. NO. 13155

CENTER 1/4 COR.  
SEC. 4, T2N, R65W  
FOUND 3 1/4" ALUM. CAP  
L.S. NO. 33642

CE. 1/16 COR.  
SEC. 4, T2N, R65W  
FOUND 2 1/2" ALUM. CAP  
P.L.S. NO. 9644

**SURFACE LOCATION: NAD 83**  
GROUND ELEVATION= 4862.0'  
LATITUDE= 40.188148°  
LONGITUDE= -104.674061°  
LATITUDE= 40°11'17.331"  
LONGITUDE= -104°40'26.621"  
**HEEL LOCATION: NAD 83**  
LATITUDE= 40.188734°  
LONGITUDE= -104.673185°  
LATITUDE= 40°11'19.442"  
LONGITUDE= -104°40'23.467"  
**BOTTOM HOLE LOCATION: NAD 83**  
LATITUDE= 40.173662°  
LONGITUDE= -104.672807°  
LATITUDE= 40°10'25.183"  
LONGITUDE= -104°40'22.105"

N 00°03'02" E 2627.40' (M)

N 00°02'17" E  
2641.65' (M)

N 00°00'40" E 2655.67' (M)

SW. COR.  
SEC. 4, T2N, R65W  
FOUND 3 1/4" ALUM. CAP  
L.S. NO. 7242

S 89°39'10" W 2646.01' (M)

S. 1/4 COR.  
SEC. 4, T2N, R65W  
FOUND 3 1/4" ALUM. CAP  
L.S. NO. 13155

S 89°39'13" W 2645.83' (M)

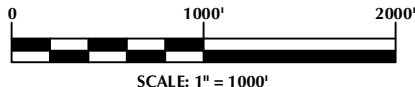
SE. COR.  
SEC. 4, T2N, R65W  
FOUND 3 1/4" ALUM. CAP  
L.S. NO. 13155

## CERTIFICATE OF SURVEYOR:

THIS IS TO CERTIFY THAT THE ABOVE PLAT WAS PREPARED FROM FIELD NOTES OF ACTUAL SURVEY MADE BY ME OR UNDER MY SUPERVISION AND THAT THE SAME ARE TRUE AND CORRECT TO THE BEST OF MY KNOWLEDGE AND BELIEF. THIS CERTIFICATE DOES NOT REPRESENT A LAND SURVEY PLAT OR IMPROVEMENT SURVEY PLAT AS DEFINED BY C.R.S. 38-51-302 AND CANNOT BE RELIED UPON TO DETERMINE OWNERSHIP.

*Randall K. French*  
PROFESSIONAL LAND SURVEYOR  
COLORADO REGISTRATION NUMBER 38512  
11/21/16

NOTICE:  
ACCORDING TO COLORADO STATE LAW YOU MUST COMMENCE ANY LEGAL ACTION BASED UPON ANY DEFECT IN THIS SURVEY WITHIN THREE YEARS AFTER YOU FIRST DISCOVER SUCH DEFECT. IN NO EVENT MAY ANY ACTION BASED UPON ANY DEFECT IN THIS SURVEY BE COMMENCED MORE THAN TEN YEARS FROM THE DATE ON THE CERTIFICATION SHOWN HEREON.



NOTE:  
MAGNETIC NORTH IS CURRENT AS OF 11/15/2016.  
MAGNETIC NORTH CHANGES WEST 0°06' PER YEAR.

## NOTES:

- ▲ INDICATES SECTION CORNER
- INDICATES CALCULATED CORNER
- ELEVATION BASED ON NAVD88 (GEOID12B)
- BASIS OF BEARING DERIVED FROM COLORADO COORDINATE SYSTEM OF 1983 NORTH ZONE.
- ALL MEASURED DISTANCES ARE GRID.
- COMBINED SCALE FACTOR: .99972912 CALCULATED FROM THE N. 1/4 CORNER OF SECTION 33, T3N, R65W
- OPERATOR: ROB WILSON / PDOP = 1.5
- SEE ADDENDUM TO WELL LOCATION CERTIFICATE FOR EXISTING IMPROVEMENTS WITHIN 500' OF THE WELL PAD.
- WELL FOOTAGES ARE MEASURED AT RIGHT ANGLES TO THE SECTION LINES.
- THE BOTTOM OF HOLE BEARS S01°38'13"E, 5491' FROM THE HEEL LOCATION.

## WELL PAD - CANNON 29N-4HZ

CANNON 29N-4HZ  
LOCATION CERTIFICATE  
370' FNL & 1079' FWL NWNW (SURFACE)  
157' FNL & 1322' FWL NENW (HEEL)  
LOCATED IN SECTION 33  
T3N, R65W, 6TH P.M.  
363' FNL & 1471' FWL NENW (BOTTOM)  
LOCATED IN SECTION 4  
T2N, R65W, 6TH P.M.  
WELD COUNTY, COLORADO

**Kerr-McGee Oil &  
Gas Onshore L.P.**  
1099 18th Street  
Denver, Colorado 80202



## CONSULTING, LLC

SHERIDAN OFFICE  
1095 Saberton Avenue  
Sheridan, Wyoming 82801  
Phone 307-674-0609

LOVELAND OFFICE  
1635 Foxtrail Drive, Suite 204  
Loveland, Colorado 80538  
Phone 970-776-4331

DRAFTED BY: LMO	CHECKED BY: RKF	SHEET NO: <b>2</b> 2 OF 2
DATE DRAFTED: 11/21/16	DATE SURVEYED: 9/15/16	
REVISED:	FILE NAME: 16-75	