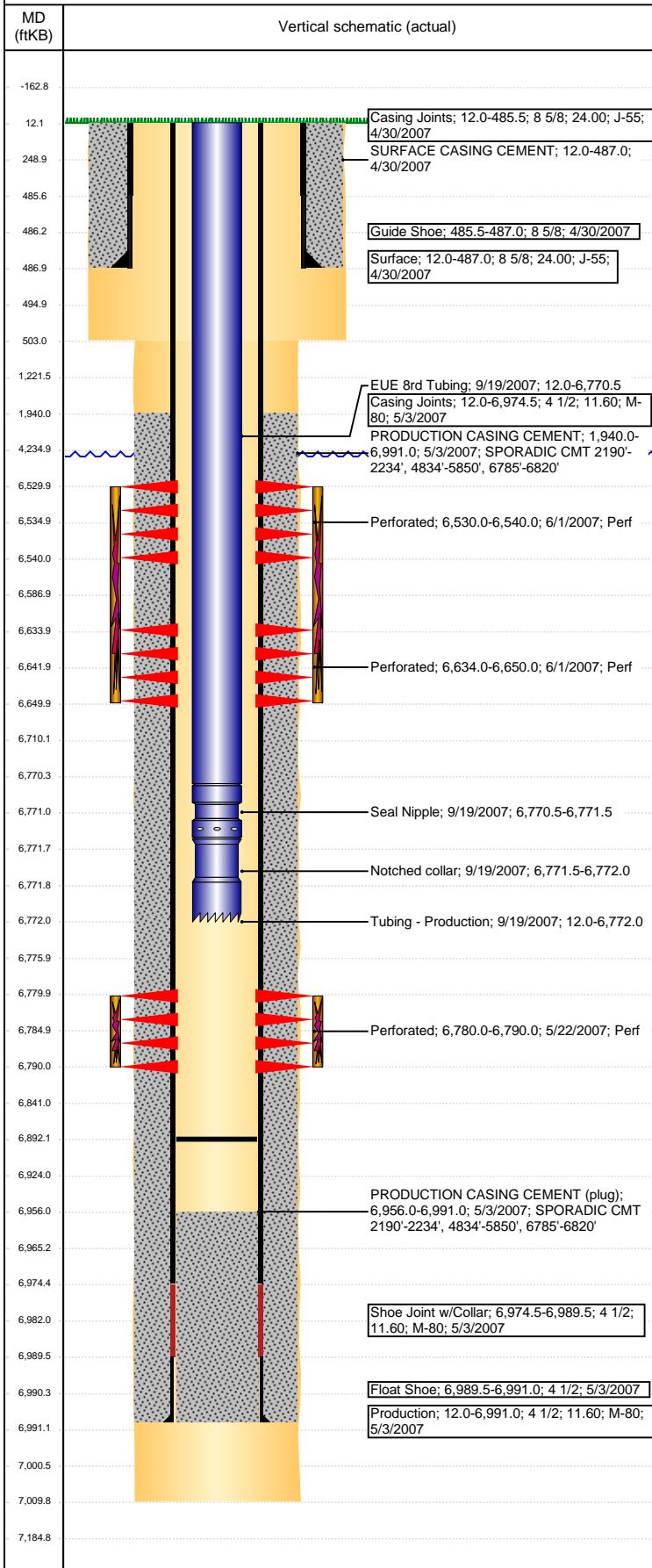


Well Name: WELLS RANCH USX BB 05-25

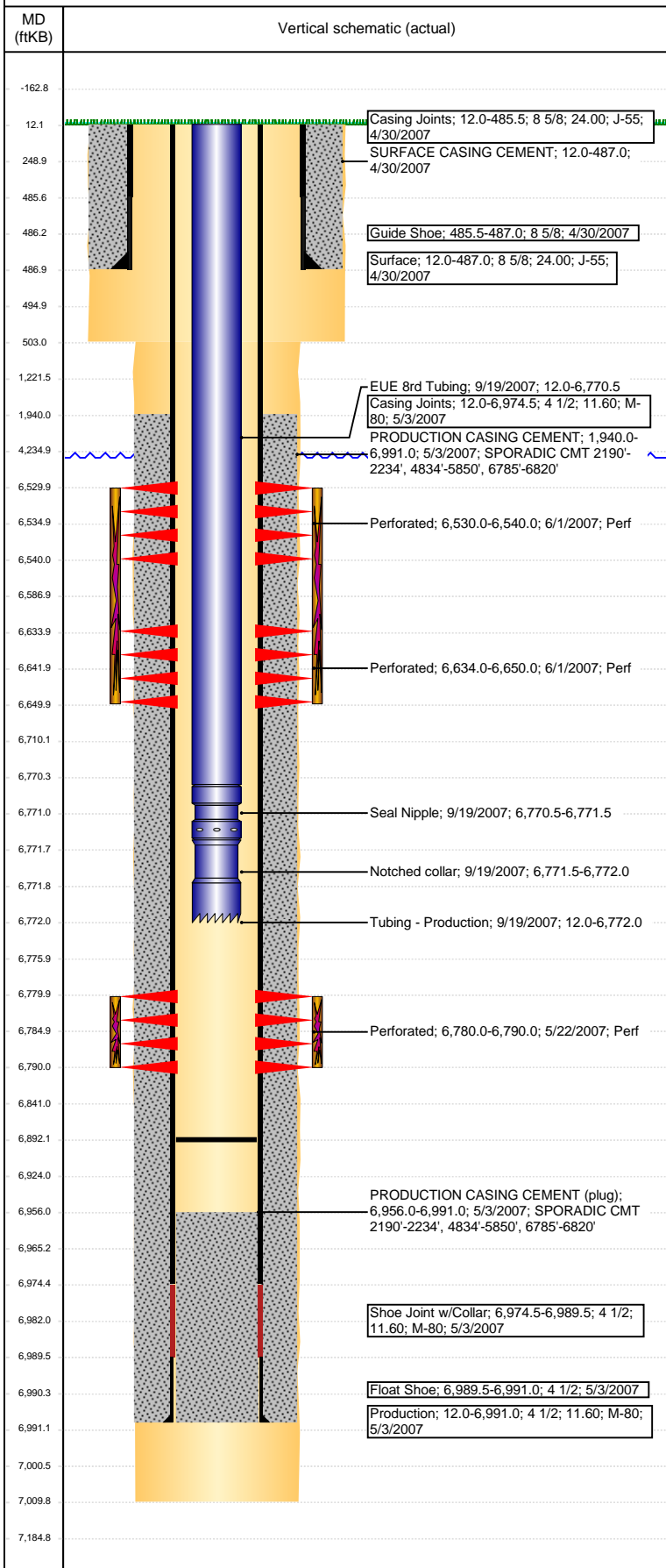
VERTICAL - ORIGINAL HOLE, 3/21/2017 8:39:04 AM



Well Header						
API 05-123-24998		Business Unit DJ BASIN		District 15		Well Config VERTICAL
Original KB Elevation (ft) 4,707		KB - GL / MSL (ftKB) 12.00		Spud Date 4/29/2007		P & A Date
Comment TD DISCREPANCY: DRILLER TD & STATE RPT 7005', LOGGERS TD 7010'						
Directions To Well						
Congressional Location						
Quarter 3 NW	Quarter 4 SW	Section 5	Township 5	Twnshp N/S Dir N	Range 63	Range E/W Dir W
Bottom Hole Location						
North-South Distance (ft)		From N or S Line		East-West Distance (ft)		From E or W Line
Plug Back Total Depths						
Date	Depth (ftKB)	Method		Com		
5/3/2007	6,975.0	CASING TALLY		FLOAT SHOE W/COLLAR		
5/22/2007	6,956.0	CASED HOLE LOG		DEPTH LOGGER ON CBL		
9/17/2007	6,892.0	TAG		C/O TO 6892'		
Wellbore Sections						
Section Des		Size (in)		Act Top, MD (ftKB)		Act Btm, MD (ftKB)
SURFACE		12 1/4		12		503
PRODUCTION		7 7/8		503		7,010
Zone Statuses						
Zone Name	Status Date	Status	Fluid Type	Job	Prod Method	
NIOBRARA	6/30/2007	PR		DRILLING/CO...		
CODELL	6/30/2007	PR		DRILLING/CO...		
Casing Strings						
Surface, 487.0ftKB						
Casing Description Surface	Run Date 4/30/2007	OD (in) 8 5/8	Wt/Len (l... 24.00	Grade J-55	Top, MD (ft... 12.0	MD (ftKB) 487.0
Production, 6,991.0ftKB						
Casing Description Production	Run Date 5/3/2007	OD (in) 4 1/2	Wt/Len (l... 11.60	Grade M-80	Top, MD (ft... 12.0	MD (ftKB) 6,991.0
Cement						
Description SURFACE CASING CEMENT				Top Depth (ftKB) 12.0		Bottom Depth (ftKB) 487.0
Description PRODUCTION CASING CEMENT				Top Depth (ftKB) 1,940.0		Bottom Depth (ftKB) 6,991.0
Tubing Strings						
Tubing Description Tubing - Production	Run Date 9/19/2007	String... 2 3/8	ID (in) 2.00	Wt (lb/ft) 4.70	Grade J-55	Len (ft) 6,760.00 Set De...
Tubing Components						
Item Des	OD (in)	Wt (lb/ft)	Grade	Jts	Len (ft)	Btm (ftKB) Btm (TVD) (ftKB)
EUE 8rd Tubing	2 3/8	4.70	J-55	221	6,758.50	6,770.5
Seal Nipple	2 3/8				1.00	6,771.5
Notched collar	2 3/8				0.50	6,772.0
Other In Hole						
Run Date	Des			OD (in)	Top (ftKB)	Btm (ftKB)
Logs						
Date	Type				Top, MD (ftKB)	Btm, MD (ftKB)
5/2/2007	COMPENSATED DENSITY				2,600.0	7,010.0
5/2/2007	INDUCTION				12.0	7,010.0
5/22/2007	CEMENT BOND				1,800.0	6,956.0
5/12/2015	GYRO				12.0	6,750.0
Perforation Data						
Linked Zone	Bnch/St g	Sum of Entered Shot Total	Top (ftKB)	Btm (ftKB)	Date	
NIOBRARA, ORIGINAL HOLE		40	6,530.00	6,540.00	6/1/2007	
NIOBRARA, ORIGINAL HOLE		64	6,634.00	6,650.00	6/1/2007	
CODELL, ORIGINAL HOLE		40	6,780.00	6,790.00	5/22/2007	
Total (Sum)		144				

Well Name: WELLS RANCH USX BB 05-25

VERTICAL - ORIGINAL HOLE, 3/21/2017 8:39:07 AM



Stimulation Intervals

Start Date 6/1/2007	Primary Job Type DRILLING/COMPLETION - ORIGINAL	
Technical Result	Tech Result Details	Tech Result Note
Comment		
Start Date 6/1/2007	Primary Job Type DRILLING/COMPLETION - ORIGINAL	
Technical Result	Tech Result Details	Tech Result Note
Comment		