



Kerr-McGee Oil & Gas Onshore LP

A subsidiary of Anadarko Petroleum Corporation

1099 18th Street
Denver, CO 80202
720-929-6000

March 15, 2017

Matt Lepore
Director, Colorado Oil and Gas Conservation Commission
Department of Natural Resources
The Chancery Building
1120 Lincoln Street, Suite 801
Denver, CO 80203

Re: **30 Day Certification Letter - 318A.e**
CANNON 28N-E4HZ COGCC DOC# 401192302
Township 3 North, Range 65 West
Section 33: NWNW
Unit Acreage: 480 acres
Unit Spacing: 3N-65W: Sec 33:E2W2, W2E2, Sec 28:SESW, SWSE;
2N-65W: Sec 4:NENW, NWNE
Weld County, Colorado

Dear Director Lepore:

Kerr-McGee Oil and Gas Onshore LP (“KMG”) hereby certifies that a thirty (30) day notice has been given by certified mail to all mineral owners in the proposed wellbore spacing unit. We have not received any objections to such well location, proposed spacing unit, or additional producing formation. KMG hereby respectfully requests approval of this boundary well.

If you have any questions or issues regarding this permit, please contact our office.

Sincerely,

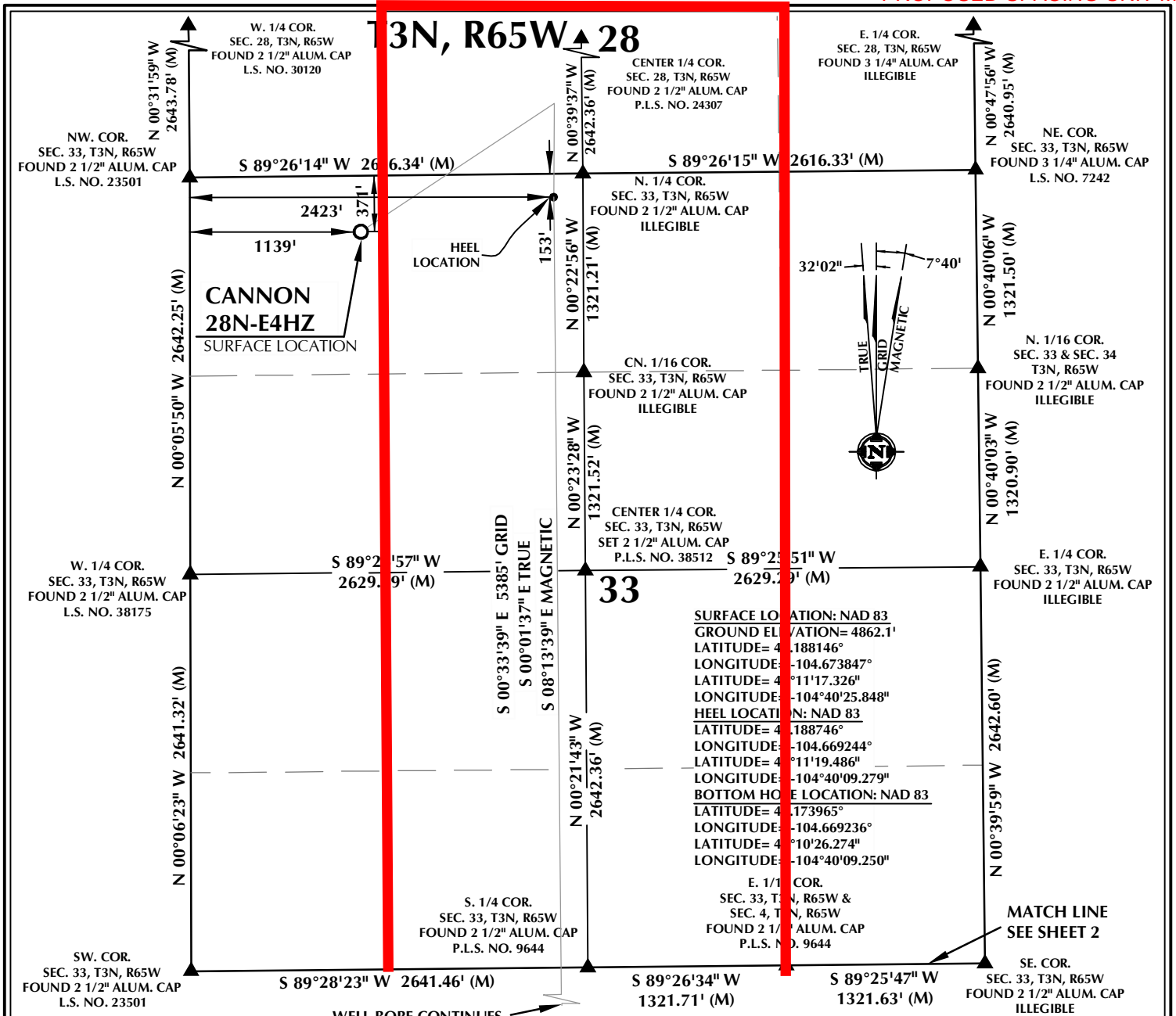
Kerr-McGee Oil and Gas Onshore LP

A handwritten signature in blue ink, appearing to read 'Craig Richardson'.

Craig Richardson
Regulatory Analyst II

Enclosure

T3N, R65W 28



SURFACE LOCATION: NAD 83
 GROUND ELEVATION= 4862.1'
 LATITUDE= 41°18'146"
 LONGITUDE= -104.673847°
 LATITUDE= 41°11'17.326"
 LONGITUDE= -104°40'25.848"
HEEL LOCATION: NAD 83
 LATITUDE= 41°18'8746"
 LONGITUDE= -104.669244°
 LATITUDE= 41°11'19.486"
 LONGITUDE= -104°40'09.279"
BOTTOM HOLE LOCATION: NAD 83
 LATITUDE= 41°17'3965"
 LONGITUDE= -104.669236°
 LATITUDE= 41°10'26.274"
 LONGITUDE= -104°40'09.250"

CERTIFICATE OF SURVEYOR:

THIS IS TO CERTIFY THAT THE ABOVE PLAT WAS PREPARED FROM FIELD NOTES OF ACTUAL SURVEY MADE BY ME OR UNDER MY SUPERVISION AND THAT THE SAME ARE TRUE AND CORRECT TO THE BEST OF MY KNOWLEDGE AND BELIEF. THIS CERTIFICATE DOES NOT REPRESENT A LAND SURVEY, PLAT OR IMPROVEMENT SURVEY PLAT AS DEFINED BY C.R.S. 38-51-302 AND CANNOT BE RELIED UPON TO DETERMINE OWNERSHIP.

Randall K. French
 RANDALL K. FRENCH
 PROFESSIONAL LAND SURVEYOR
 COLORADO REGISTRATION NUMBER 38512

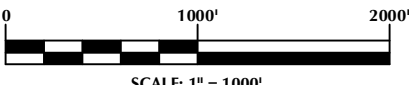
11/21/16

NOTICE:
 ACCORDING TO COLORADO STATE LAW YOU MUST COMMENCE ANY LEGAL ACTION BASED UPON ANY DEFECT IN THIS SURVEY WITHIN THREE YEARS AFTER YOU FIRST DISCOVER SUCH DEFECT. IN NO EVENT MAY ANY ACTION BASED UPON ANY DEFECT IN THIS SURVEY BE COMMENCED MORE THAN TEN YEARS FROM THE DATE ON THE CERTIFICATION SHOWN HEREON.

WELL BORE CONTINUES INTO SECTION 4, T2N, R65W

NOTES:

- ▲ INDICATES SECTION CORNER
- INDICATES CALCULATED CORNER
- ELEVATION BASED ON NAVD88 (GEOID12B)
- BASIS OF BEARING DERIVED FROM COLORADO COORDINATE SYSTEM OF 1983 NORTH ZONE.
- ALL MEASURED DISTANCES ARE GRID.
- COMBINED SCALE FACTOR: .99972912 CALCULATED FROM THE N. 1/4 CORNER OF SECTION 33
- OPERATOR: ROB WILSON / PDOP = 1.4
- SEE ADDENDUM TO WELL LOCATION CERTIFICATE FOR EXISTING IMPROVEMENTS WITHIN 500' OF THE WELL PAD.
- WELL FOOTAGES ARE MEASURED AT RIGHT ANGLES TO THE SECTION LINES.
- THE BOTTOM OF HOLE BEARS S00°33'39"E, 5385' FROM THE HEEL LOCATION.



NOTE:
 MAGNETIC NORTH IS CURRENT AS OF 11/15/2016.
 MAGNETIC NORTH CHANGES WEST 0°06' PER YEAR.

WELL PAD - CANNON 29N-4HZ

CANNON 28N-E4HZ
 LOCATION CERTIFICATE
 371' FNL & 1139' FWL NWNW (SURFACE)
 153' FNL & 2423' FWL NENW (HEEL)
 LOCATED IN SECTION 33
 T3N, R65W, 6TH P.M.
 253' FNL & 2467' FWL NENW (BOTTOM)
 LOCATED IN SECTION 4
 T2N, R65W, 6TH P.M.
 WELD COUNTY, COLORADO

Kerr-McGee Oil & Gas Onshore L.P.
 1099 18th Street
 Denver, Colorado 80202



CONSULTING, LLC

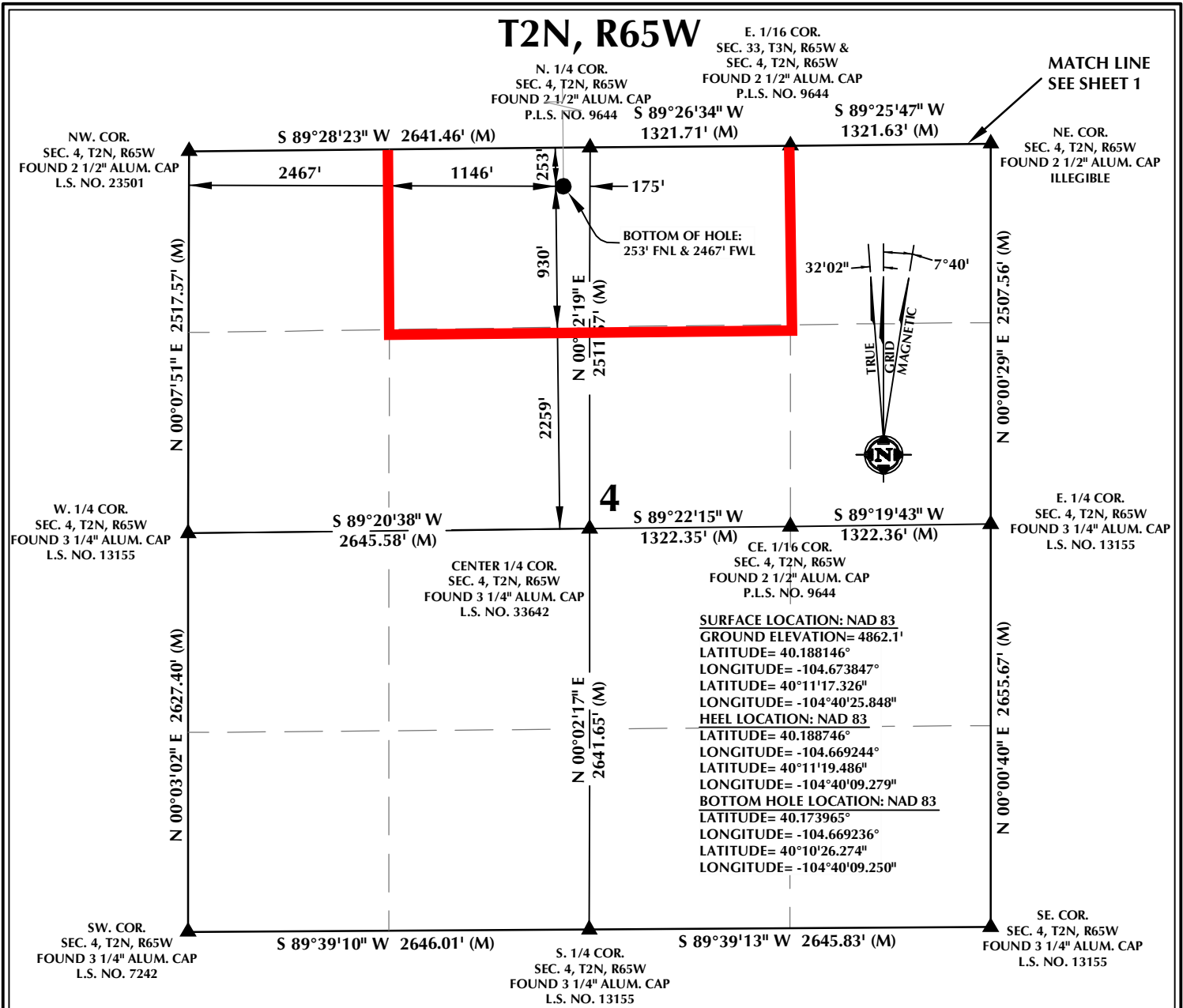
SHERIDAN OFFICE
 1095 Saberton Avenue
 Sheridan, Wyoming 82801
 Phone 307-674-0609

LOVELAND OFFICE
 1635 Foxtrail Drive, Suite 204
 Loveland, Colorado 80538
 Phone 970-776-4331

DRAFTED BY: LMO	CHECKED BY: RKF	SHEET NO: 1 OF 2
DATE DRAFTED: 11/21/16	DATE SURVEYED: 9/15/16	
REVISED:	FILE NAME: 16-75	

K:\ADAR\CO\2016\2016_75_CANNON_LAND_T3N_R65W_SEC_33\PLATS\CANNON_29N-E4HZ\CANNON_PAT.dwg, 11/21/2016 3:32:11 PM, lrb

T2N, R65W



CERTIFICATE OF SURVEYOR:

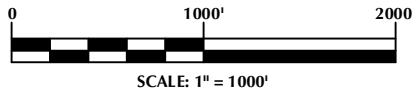
THIS IS TO CERTIFY THAT THE ABOVE PLAT WAS PREPARED FROM FIELD NOTES OF ACTUAL SURVEY MADE BY ME OR UNDER MY SUPERVISION AND THAT THE SAME ARE TRUE AND CORRECT TO THE BEST OF MY KNOWLEDGE AND BELIEF. THIS CERTIFICATE DOES NOT REPRESENT A LAND SURVEY, PLAT OR IMPROVEMENT SURVEY PLAT AS DEFINED BY C.R.S. 38-51-302 AND CANNOT BE RELIED UPON TO DETERMINE OWNERSHIP.

Randall K. French
 RANDALL K. FRENCH
 PROFESSIONAL LAND SURVEYOR
 COLORADO REGISTRATION NUMBER 38512
 11/21/16

NOTICE:
 ACCORDING TO COLORADO STATE LAW YOU MUST COMMENCE ANY LEGAL ACTION BASED UPON ANY DEFECT IN THIS SURVEY WITHIN THREE YEARS AFTER YOU FIRST DISCOVER SUCH DEFECT. IN NO EVENT MAY ANY ACTION BASED UPON ANY DEFECT IN THIS SURVEY BE COMMENCED MORE THAN TEN YEARS FROM THE DATE ON THE CERTIFICATION SHOWN HEREON.

NOTES:

- ▲ INDICATES SECTION CORNER
- INDICATES CALCULATED CORNER
- ELEVATION BASED ON NAVD88 (GEOID12B)
- BASIS OF BEARING DERIVED FROM COLORADO COORDINATE SYSTEM OF 1983 NORTH ZONE.
- ALL MEASURED DISTANCES ARE GRID.
- COMBINED SCALE FACTOR: .99972912 CALCULATED FROM THE N. 1/4 CORNER OF SECTION 33, T3N, R65W
- OPERATOR: ROB WILSON / PDOP = 1.4
- SEE ADDENDUM TO WELL LOCATION CERTIFICATE FOR EXISTING IMPROVEMENTS WITHIN 500' OF THE WELL PAD.
- WELL FOOTAGES ARE MEASURED AT RIGHT ANGLES TO THE SECTION LINES.
- THE BOTTOM OF HOLE BEARS S00°33'39"E, 5385' FROM THE HEEL LOCATION.



NOTE:
 MAGNETIC NORTH IS CURRENT AS OF 11/15/2016.
 MAGNETIC NORTH CHANGES WEST 0°06' PER YEAR.

WELL PAD - CANNON 29N-4HZ

CANNON 28N-E4HZ
 LOCATION CERTIFICATE
 371' FNL & 1139' FWL NWNW (SURFACE)
 153' FNL & 2423' FWL NENW (HEEL)
 LOCATED IN SECTION 33
 T3N, R65W, 6TH P.M.
 253' FNL & 2467' FWL NENW (BOTTOM)
 LOCATED IN SECTION 4
 T2N, R65W, 6TH P.M.
 WELD COUNTY, COLORADO

**Kerr-McGee Oil &
 Gas Onshore L.P.**
 1099 18th Street
 Denver, Colorado 80202



CONSULTING, LLC

SHERIDAN OFFICE
 1095 Saberton Avenue
 Sheridan, Wyoming 82801
 Phone 307-674-0609

LOVELAND OFFICE
 1635 Foxtrail Drive, Suite 204
 Loveland, Colorado 80538
 Phone 970-776-4331

DRAFTED BY: LMO	CHECKED BY: RKF	SHEET NO: 2 2 OF 2
DATE DRAFTED: 11/21/16	DATE SURVEYED: 9/15/16	
REVISED:	FILE NAME: 16-75	