



PATRIOT

WELL SOLUTIONS

TEMP LOG

Company	EXPEDITION WATER SOLUTIONS LLC.			Country	USA		
Well	EWS #4						
Field	WATTENBURG						
County	WELD						
State	COLORADO						
Company				EXPEDITION WATER SOLUTIONS LLC.			
Well				EWS #4			
Field				WATTENBURG			
County				WELD			
State				COLORADO			
Country				USA			
Location:				API # :			
Permanent Datum				K.B			
Log Measured From				K.B			
Drilling Measured From				K.B. OR 13' AGL			
SEC 18 TWP 2N RGE 63W				LAT 40.137052 LONG -104.472643			
Elevation				Other Services			
K.B.				K.B.			
D.F.				D.F.			
G.L.				G.L.			
Date	11 MAR 2017						
Run Number	1						
Depth Driller	10.190'						
Depth Logger	10.186'						
Bottom Logged Interval	10.186'						
Top Log Interval	6.000'						
Open Hole Size	8 3/4						
Type Fluid	WATER						
Density / Viscosity	8.33						
Max. Recorded Temp.	341						
Estimated Cement Top	N/A						
Time Well Ready	10:30						
Time Logger on Bottom	12:30						
Equipment Number	1002						
Location	CASPER						
Recorded By	R RICHARDS						
Witnessed By	T GIMBLE						
Borehole Record				Tubing Record			
Run Number	Bit	From	To	Size	Weight	From	To
Casing Record	Size			Mgt/Ft	Top	Bottom	
Surface String	9 5/8			36	SURFACE	1008	
Prot. String	7			26	SURFACE	8548	
Production String	4.5			11.6	8450	10190	
Liner							

<<< Fold Here >>>

All interpretations are opinions based on inferences from electrical or other measurements and we cannot and do not guarantee the accuracy or correctness of any interpretation, and we shall not, except in the case of gross or willful negligence on our part, be liable or responsible for any loss, costs, damages, or expenses incurred or sustained by anyone resulting from any interpretation made by any of our officers, agents or employees. These interpretations are also subject to our general terms and conditions set out in our current Price Schedule.

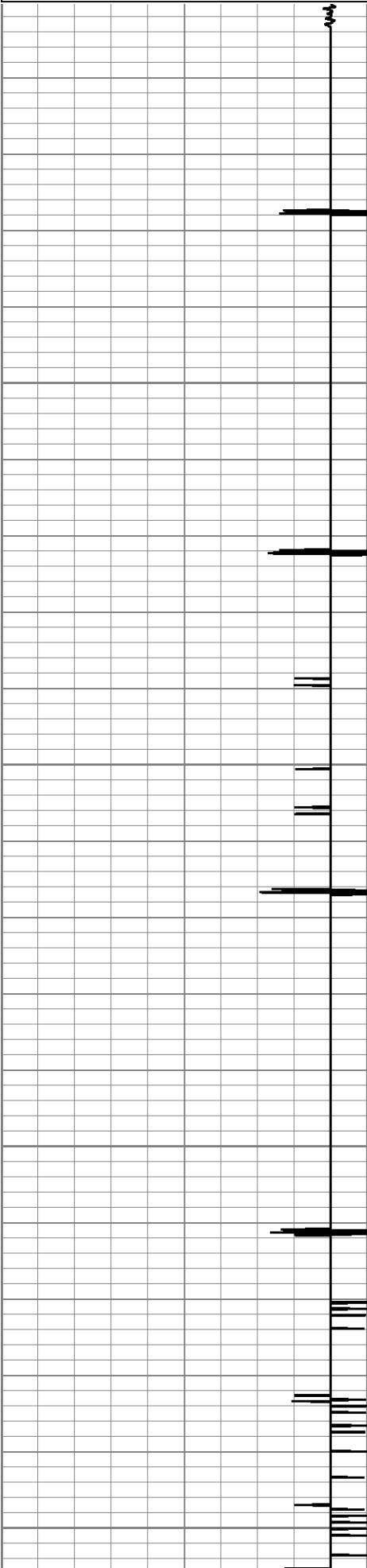
Comments

LOG CORRELATED TO SWS ISOLATION SCANNER DATED 22-FEB-2017*

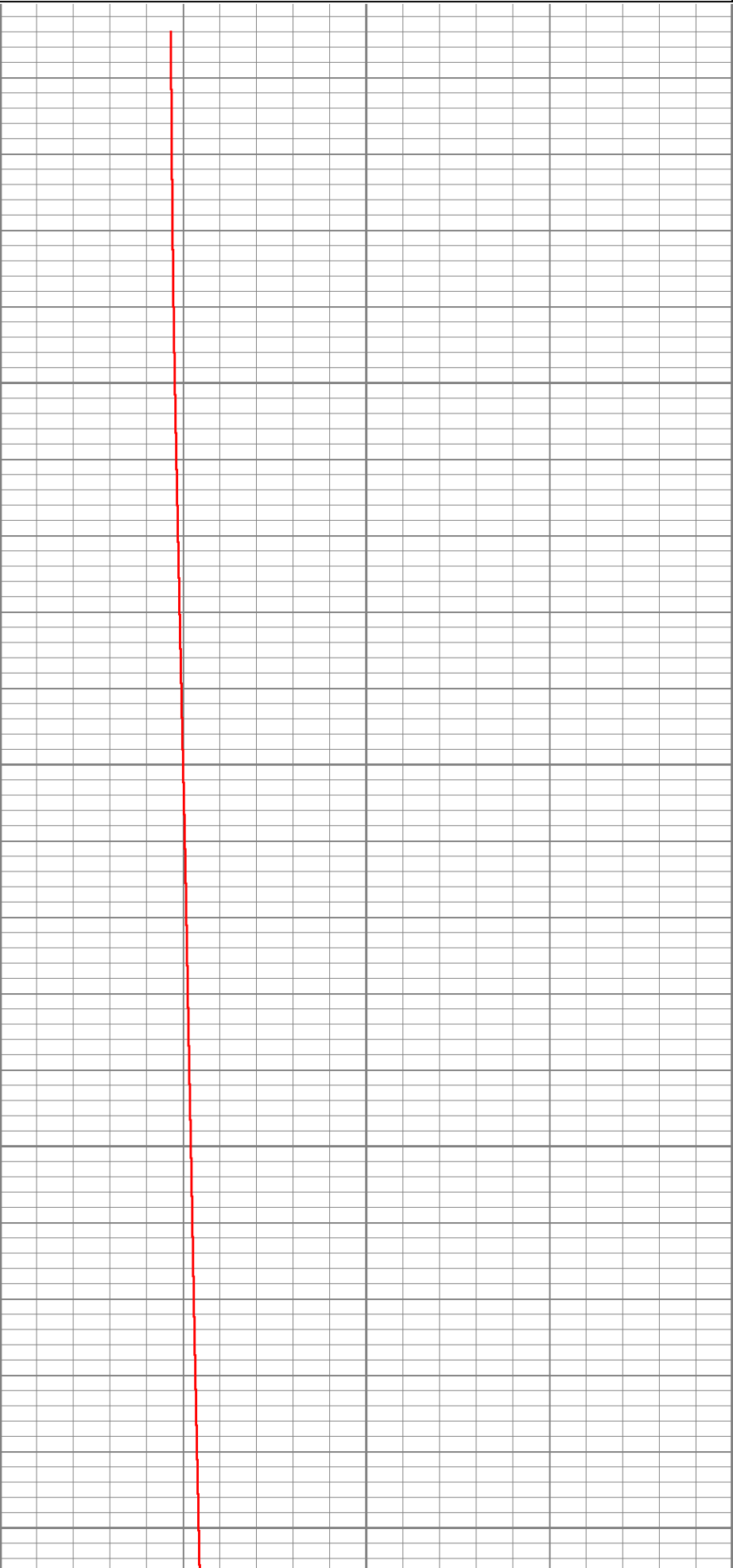
Database File 10307_ews_templog.db
Dataset Pathname ../merge11
Presentation Format temp
Dataset Creation Mon Mar 20 13:58:48 2017
Charted by Depth in Feet scaled 1:240

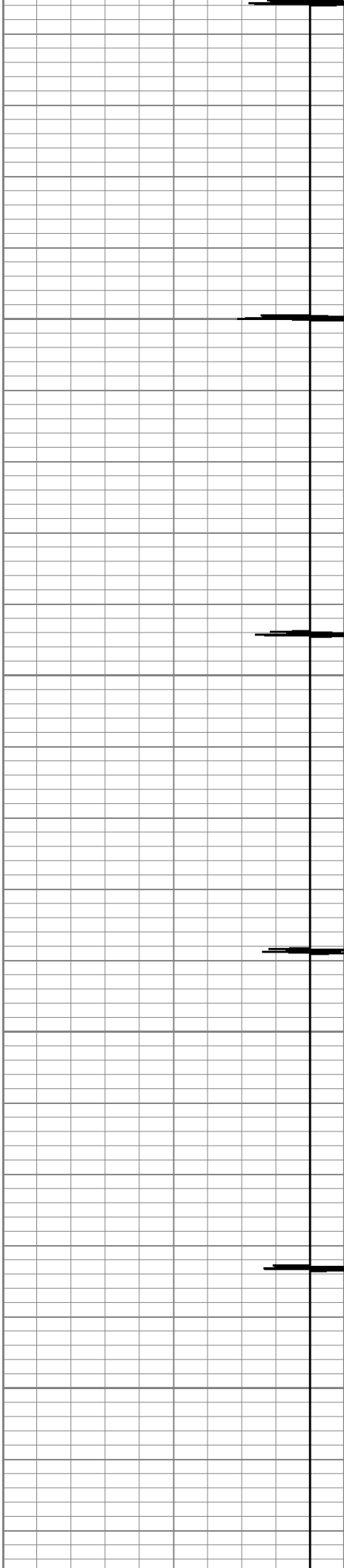
9	CCL	-1
---	-----	----

200	BASE TEMP (degF)	350
200	DYNAMIC TEMP (degF)	350
200	2-HR SI TEMP (degF)	350



5950
6000
6050
6100



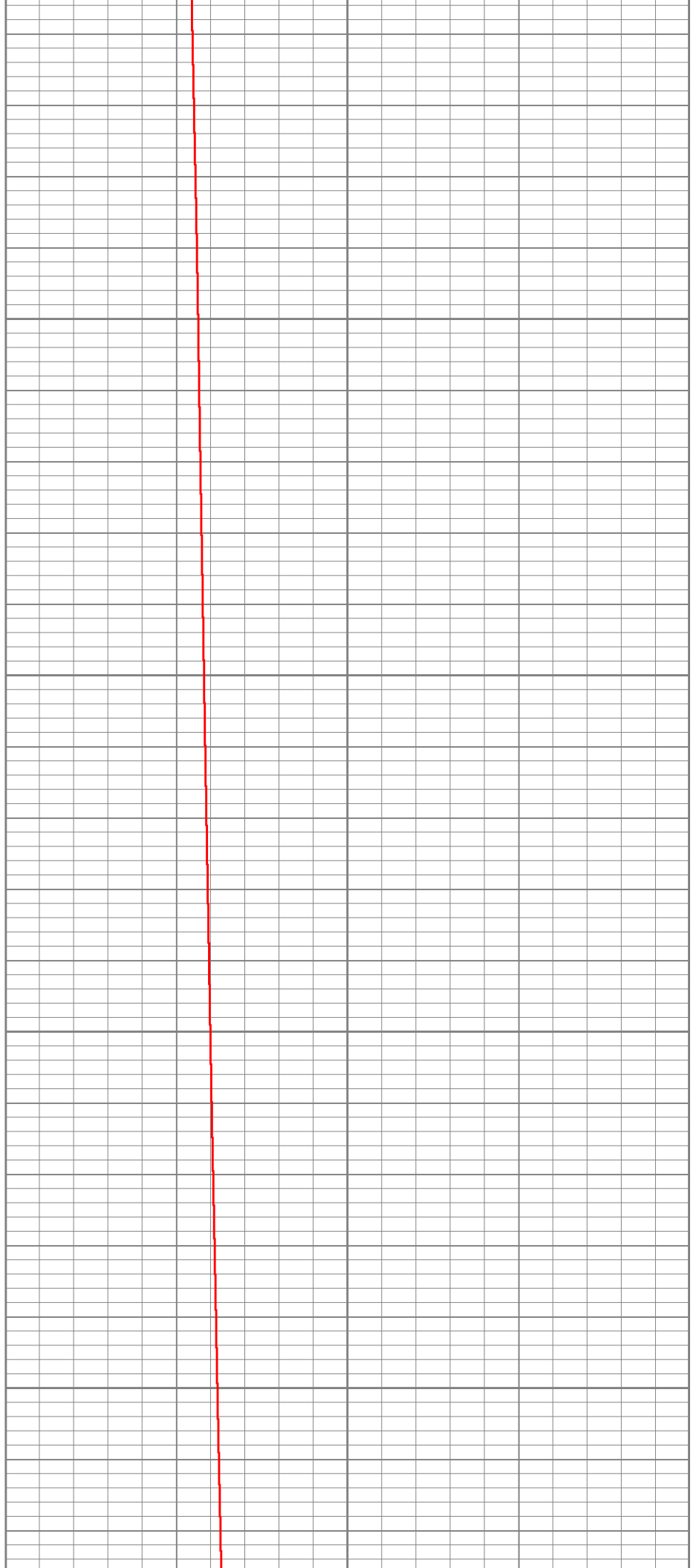


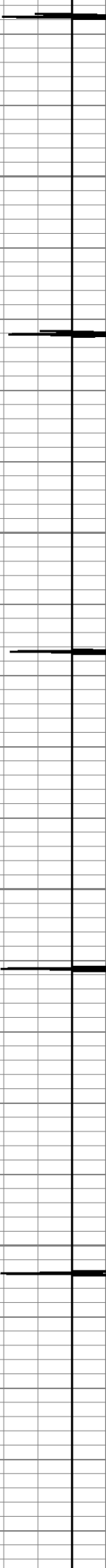
6150

6200

6250

6300





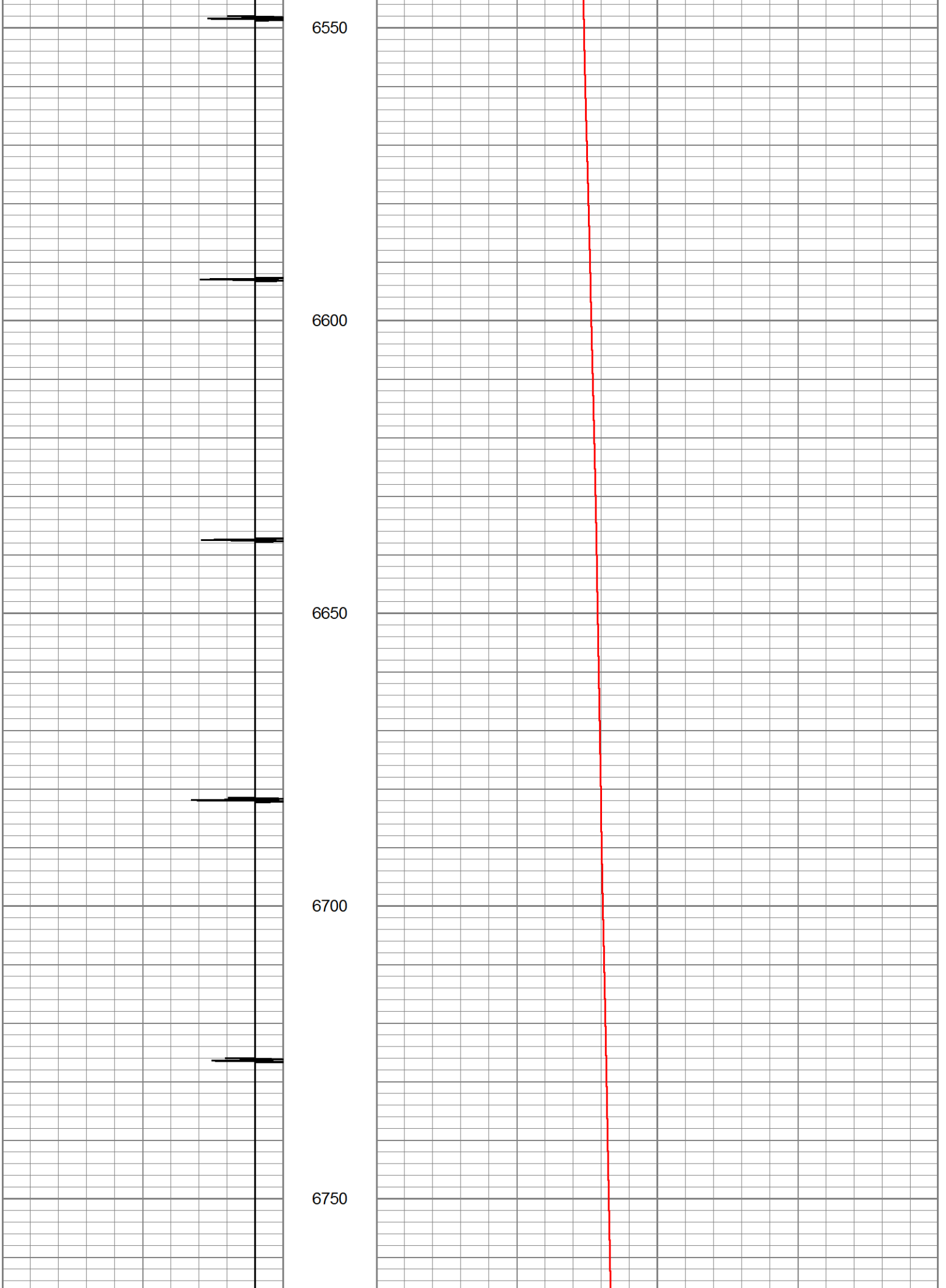
6350

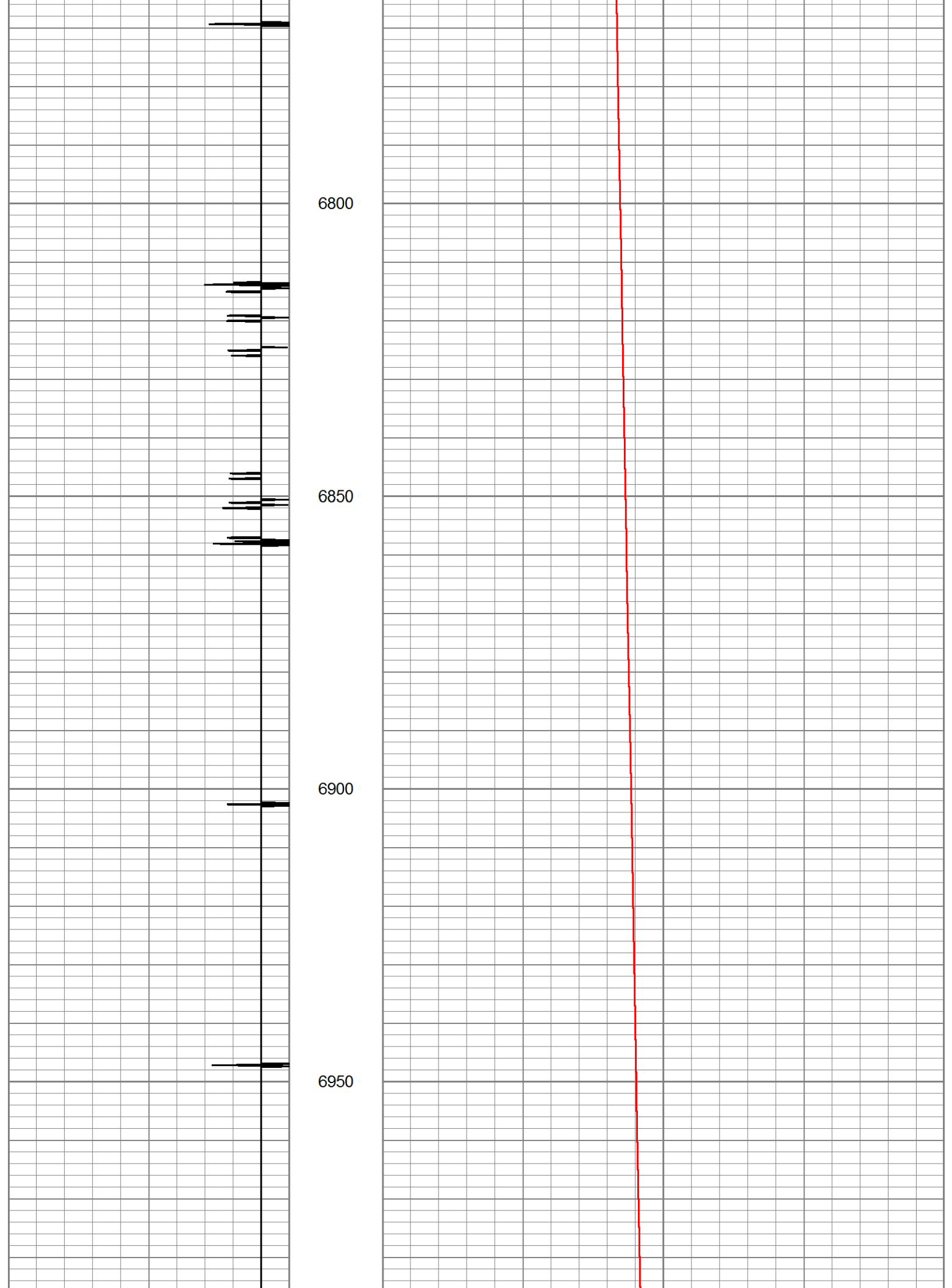
6400

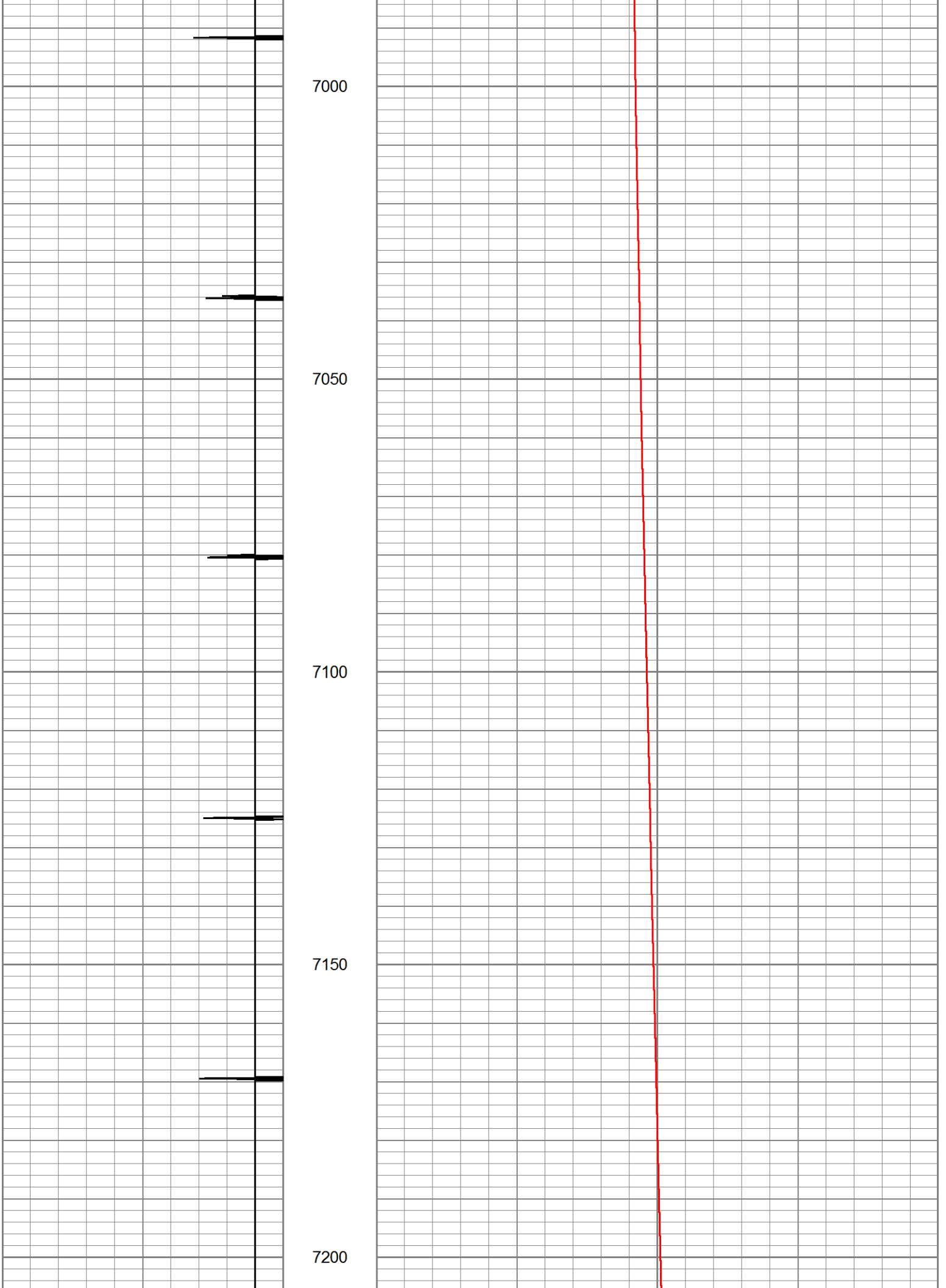
6450

6500









7200

7250

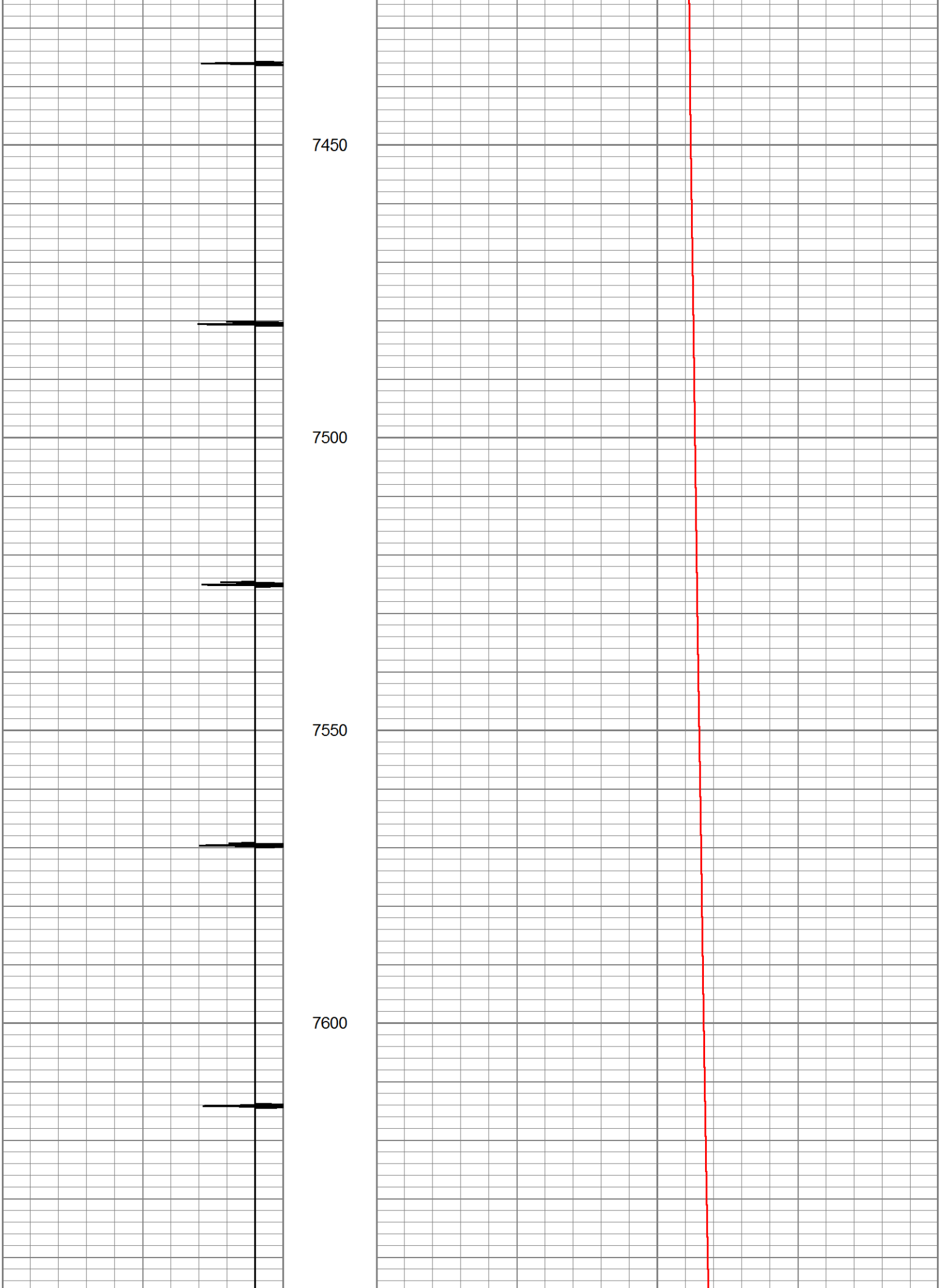
7300

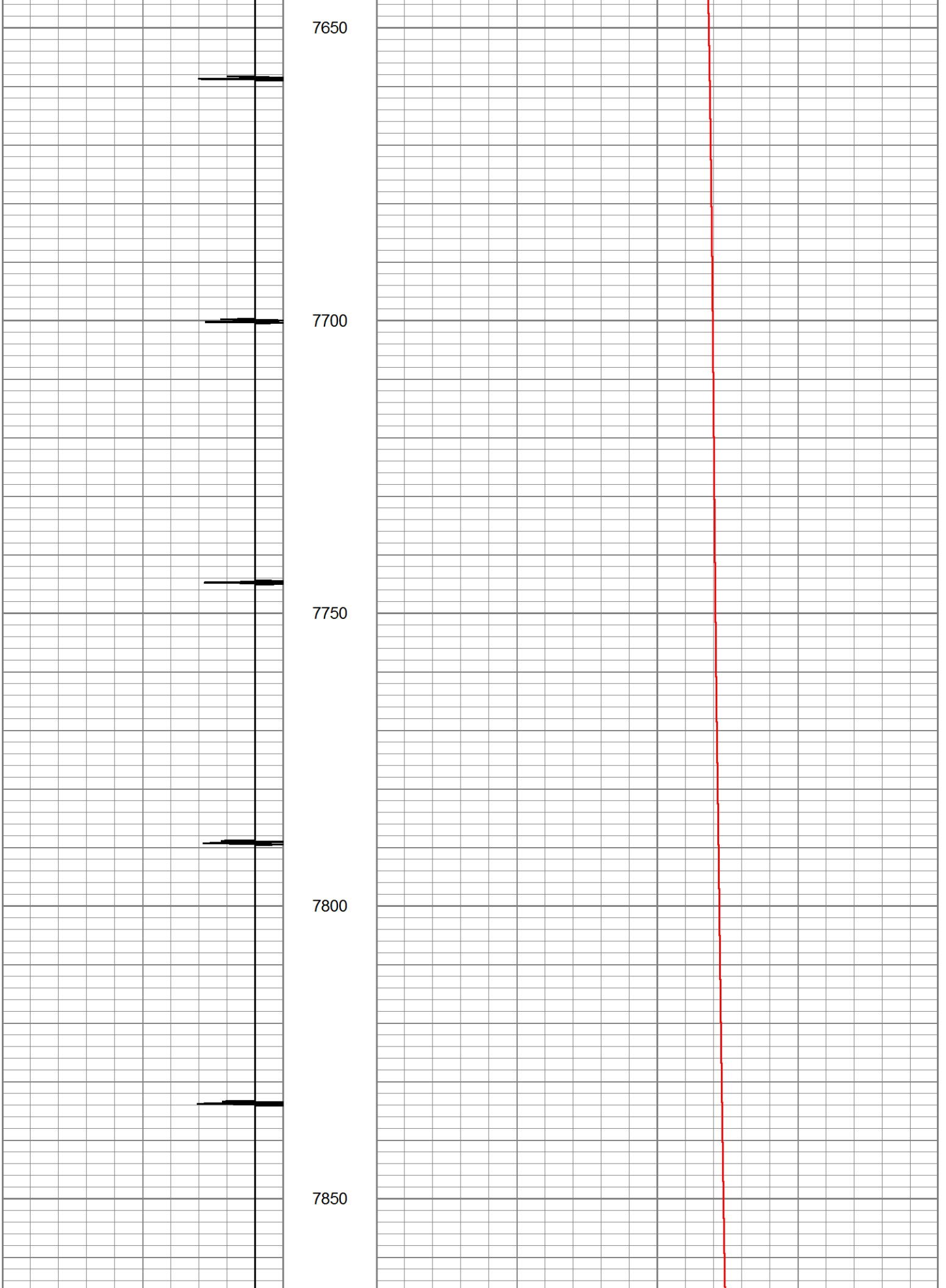
7350

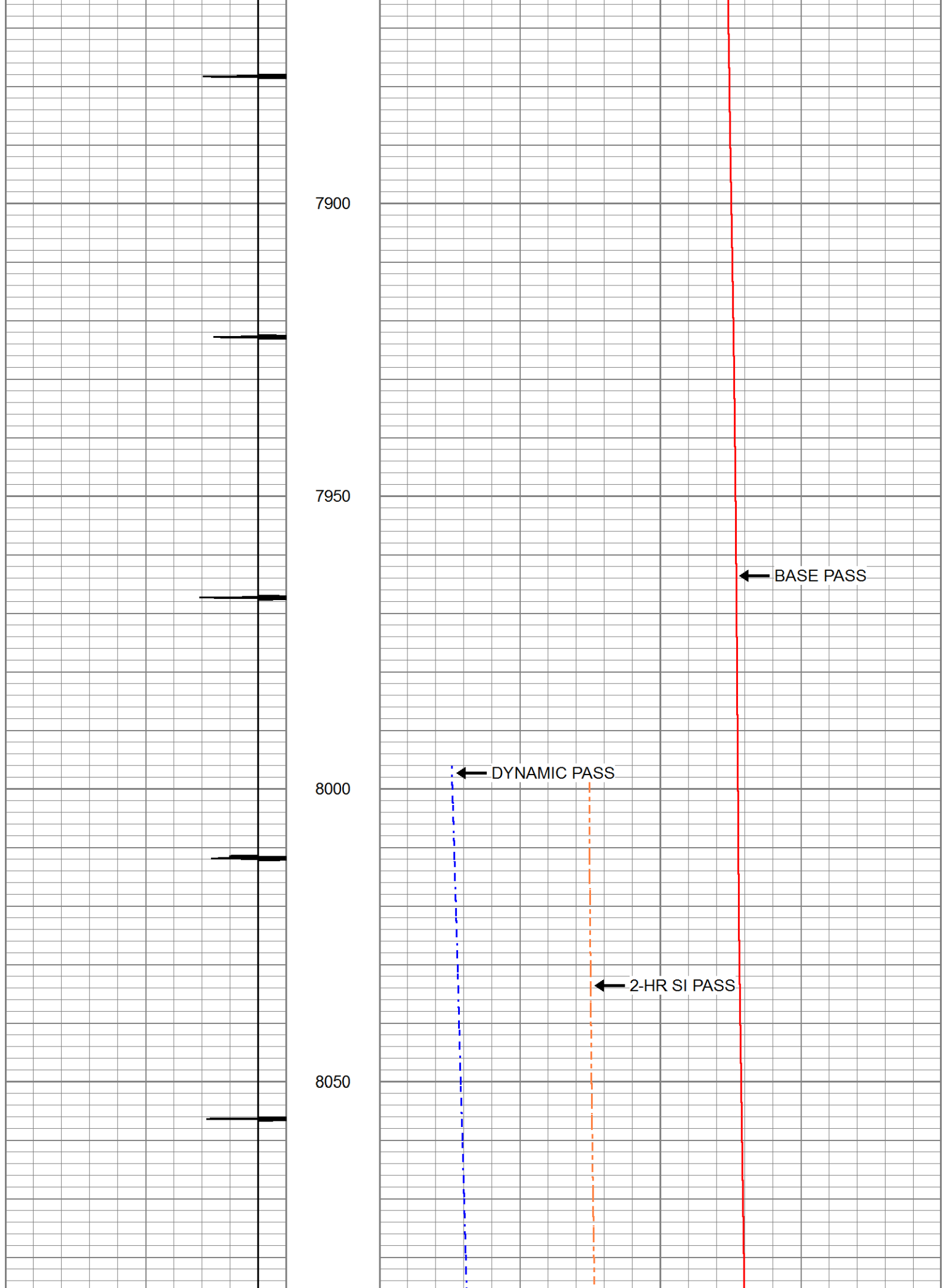
7400

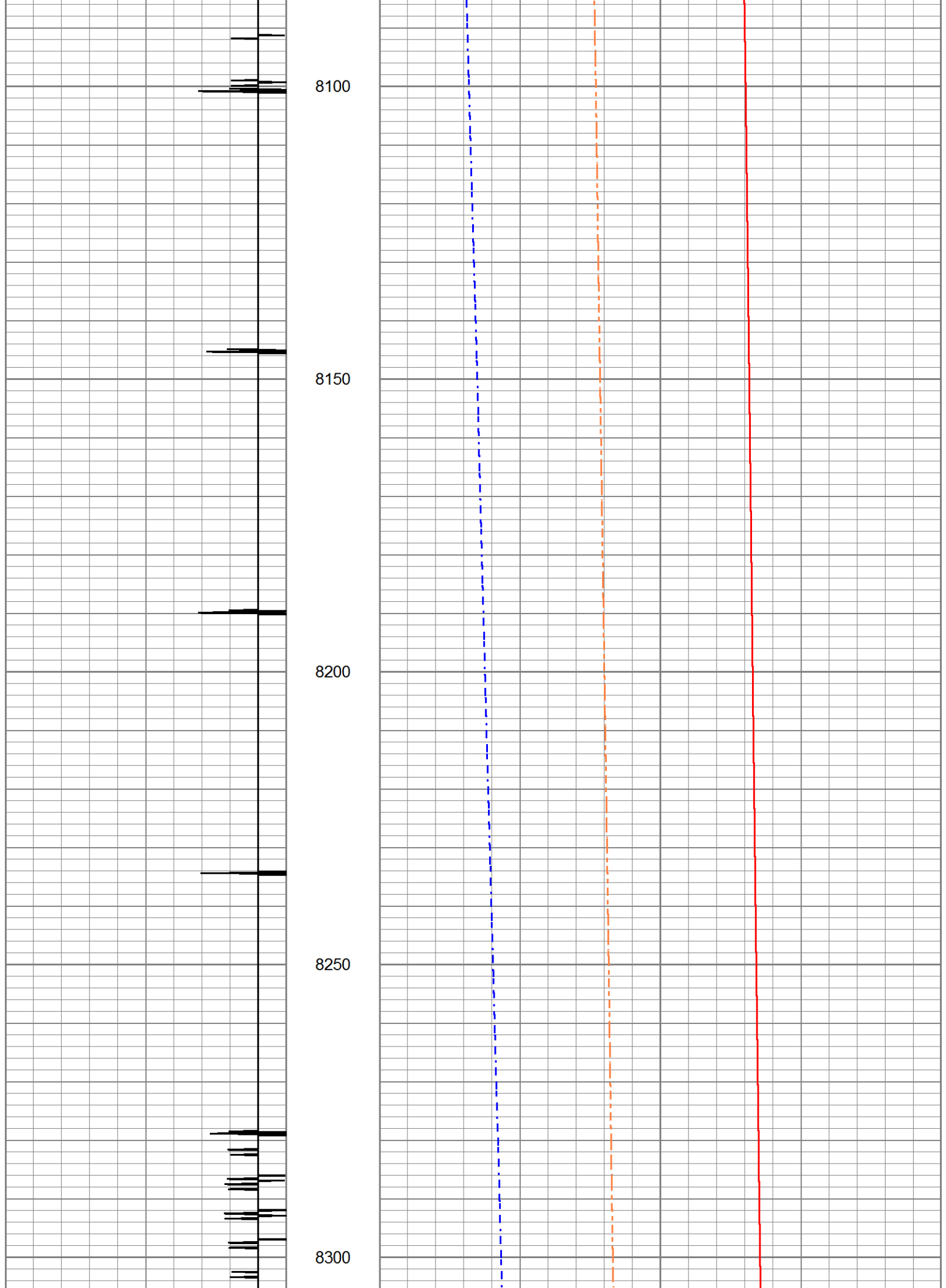
7450

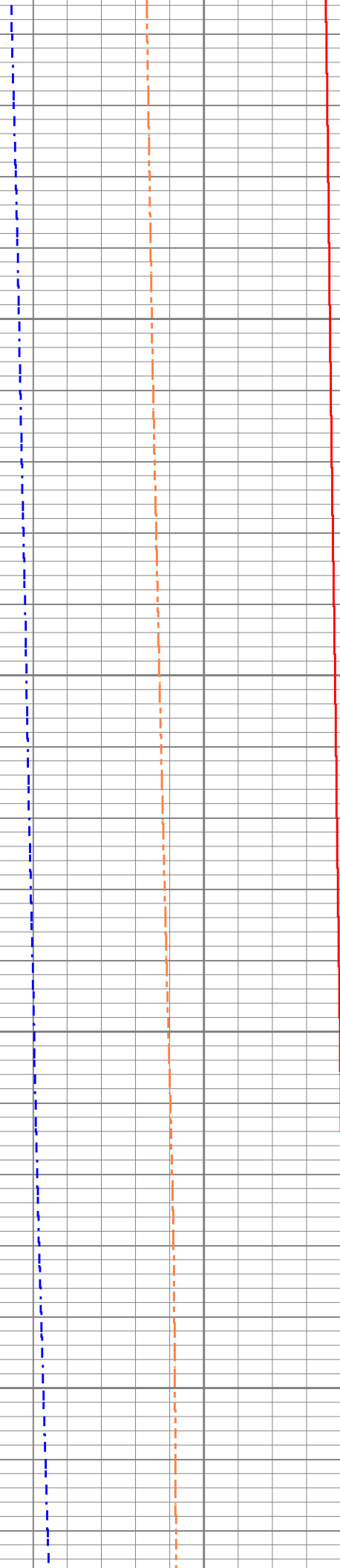
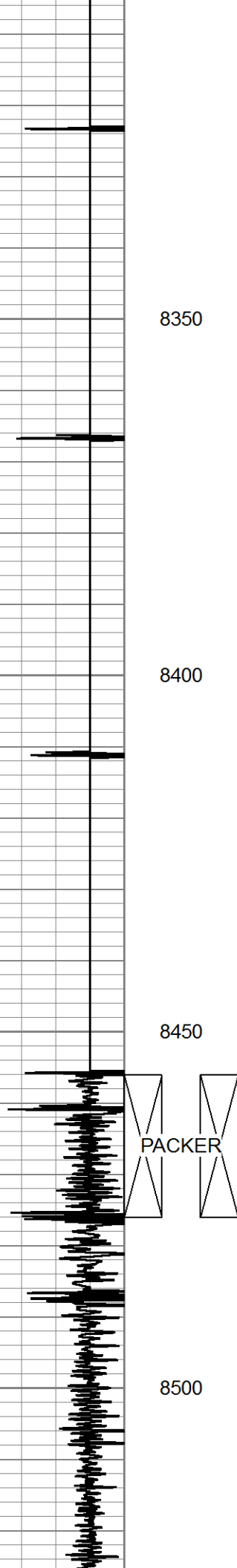


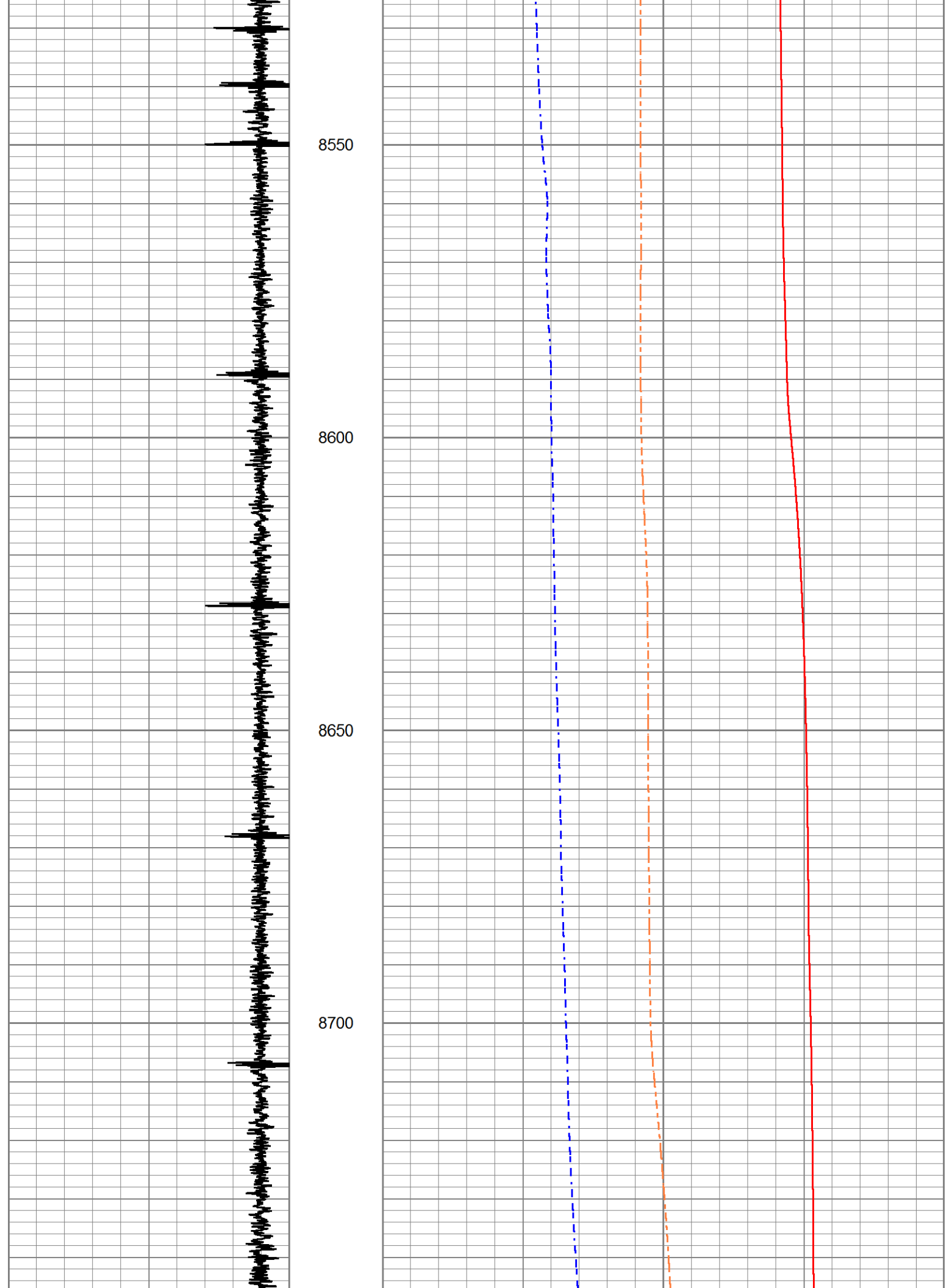


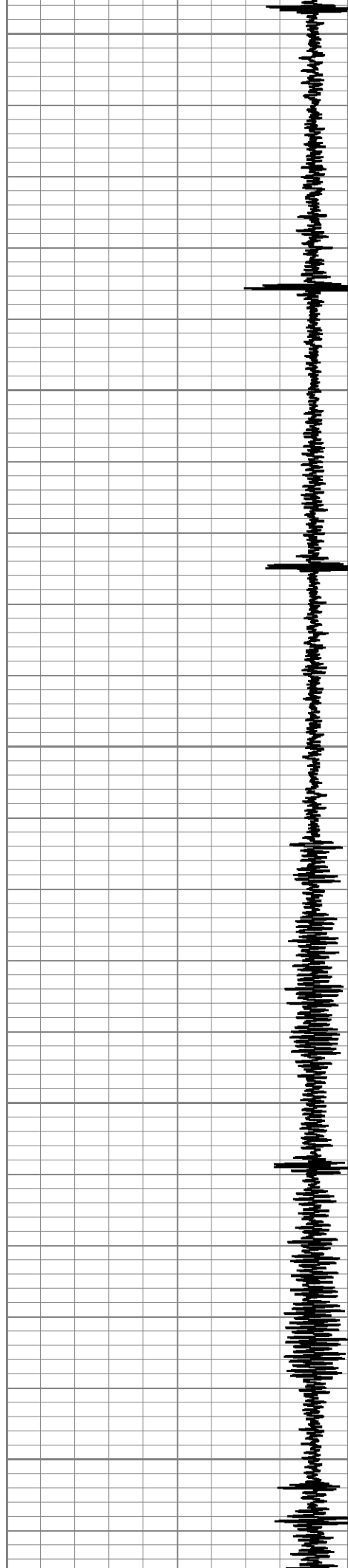












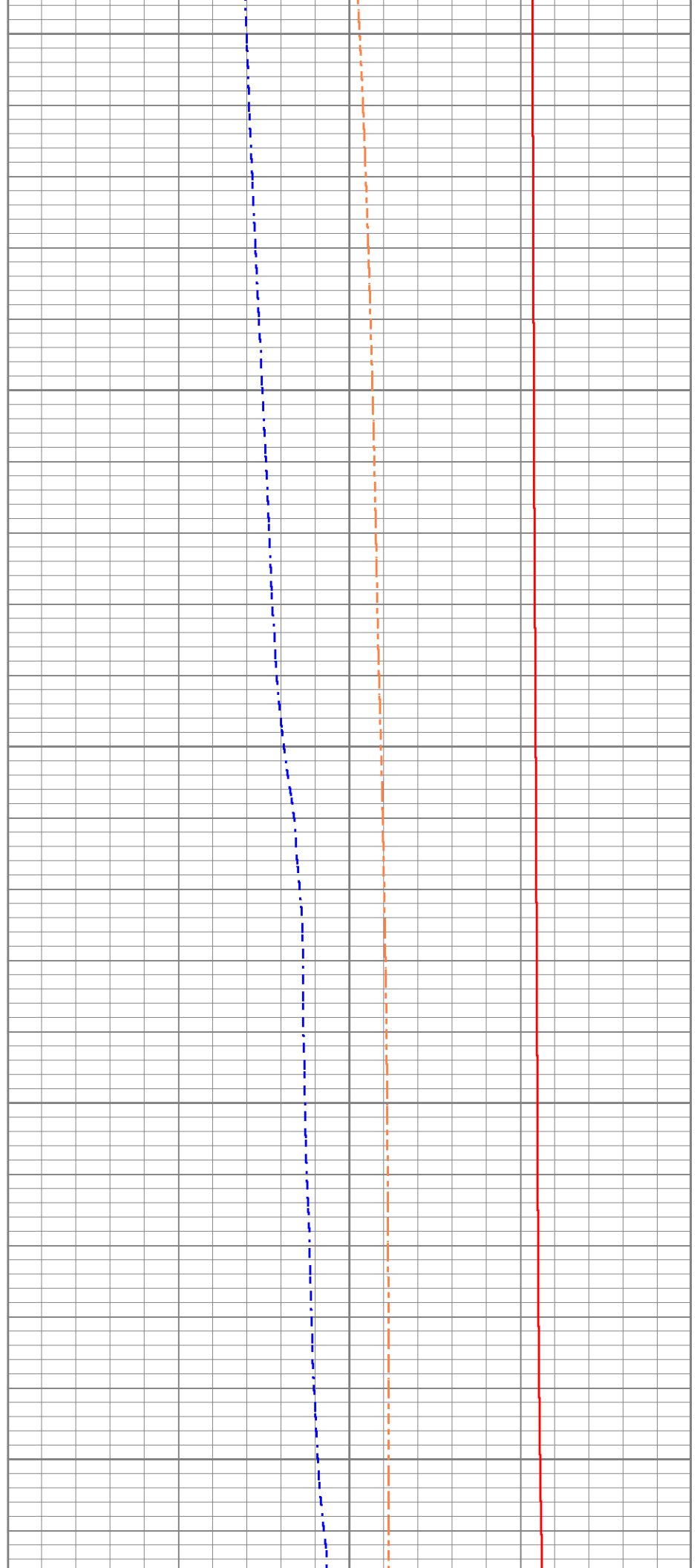
8750

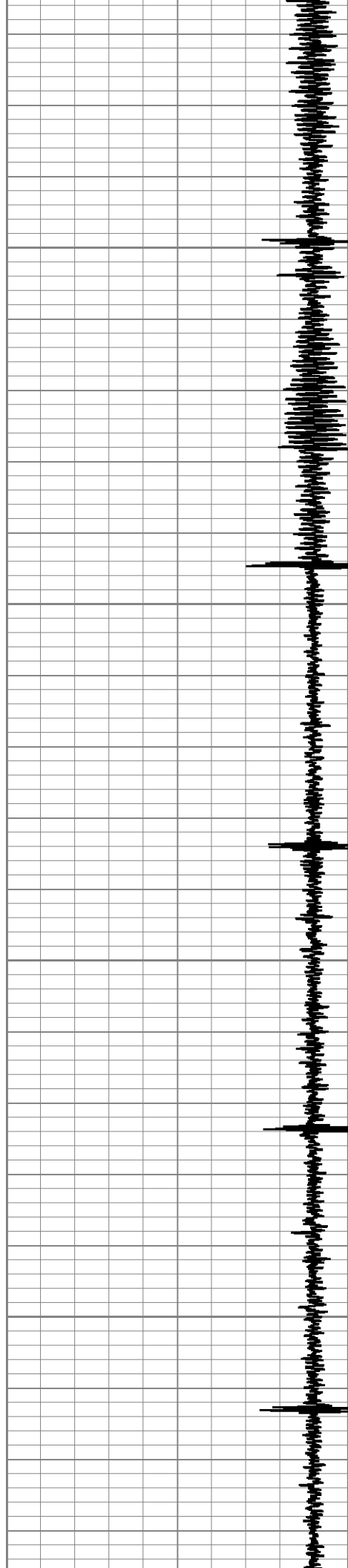
8800

8850

8900

8950



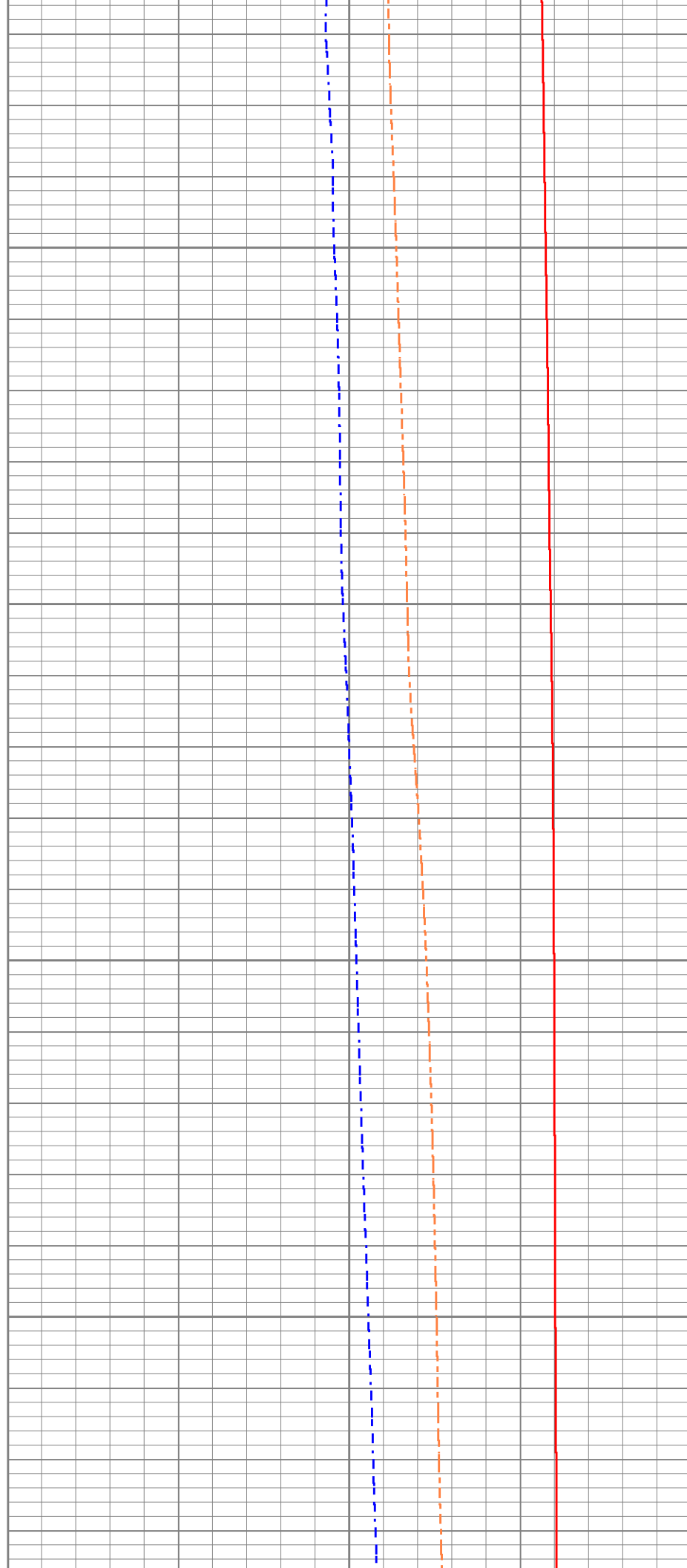


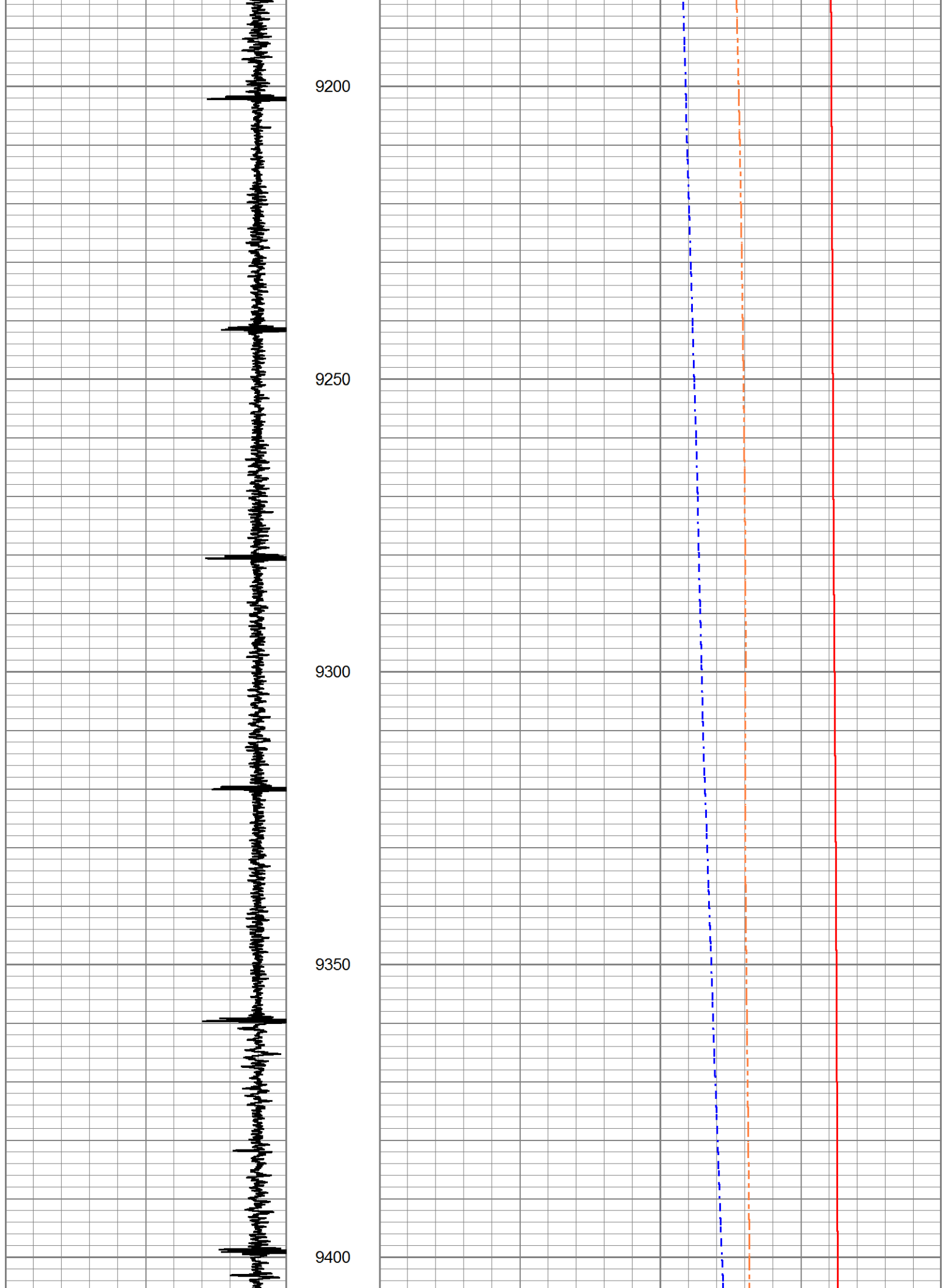
9000

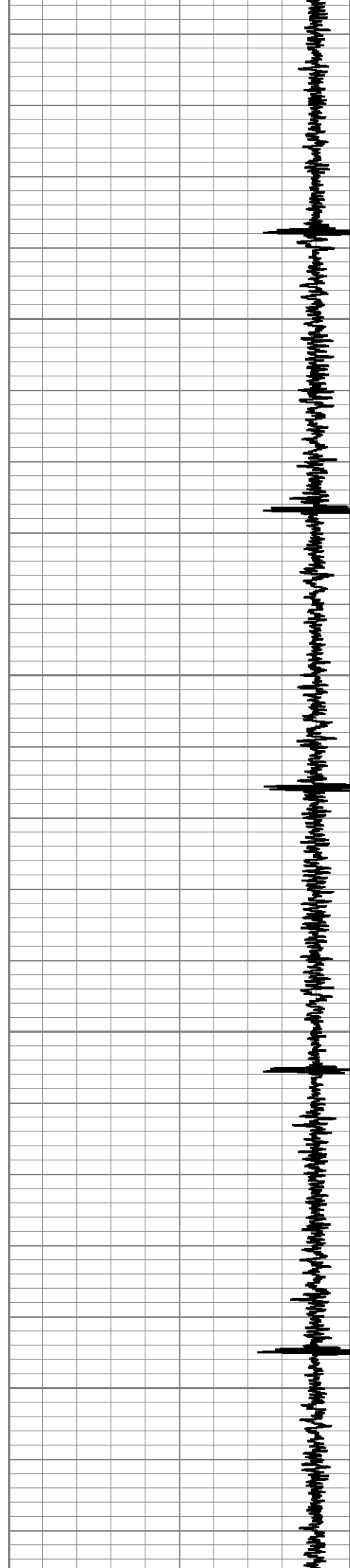
9050

9100

9150







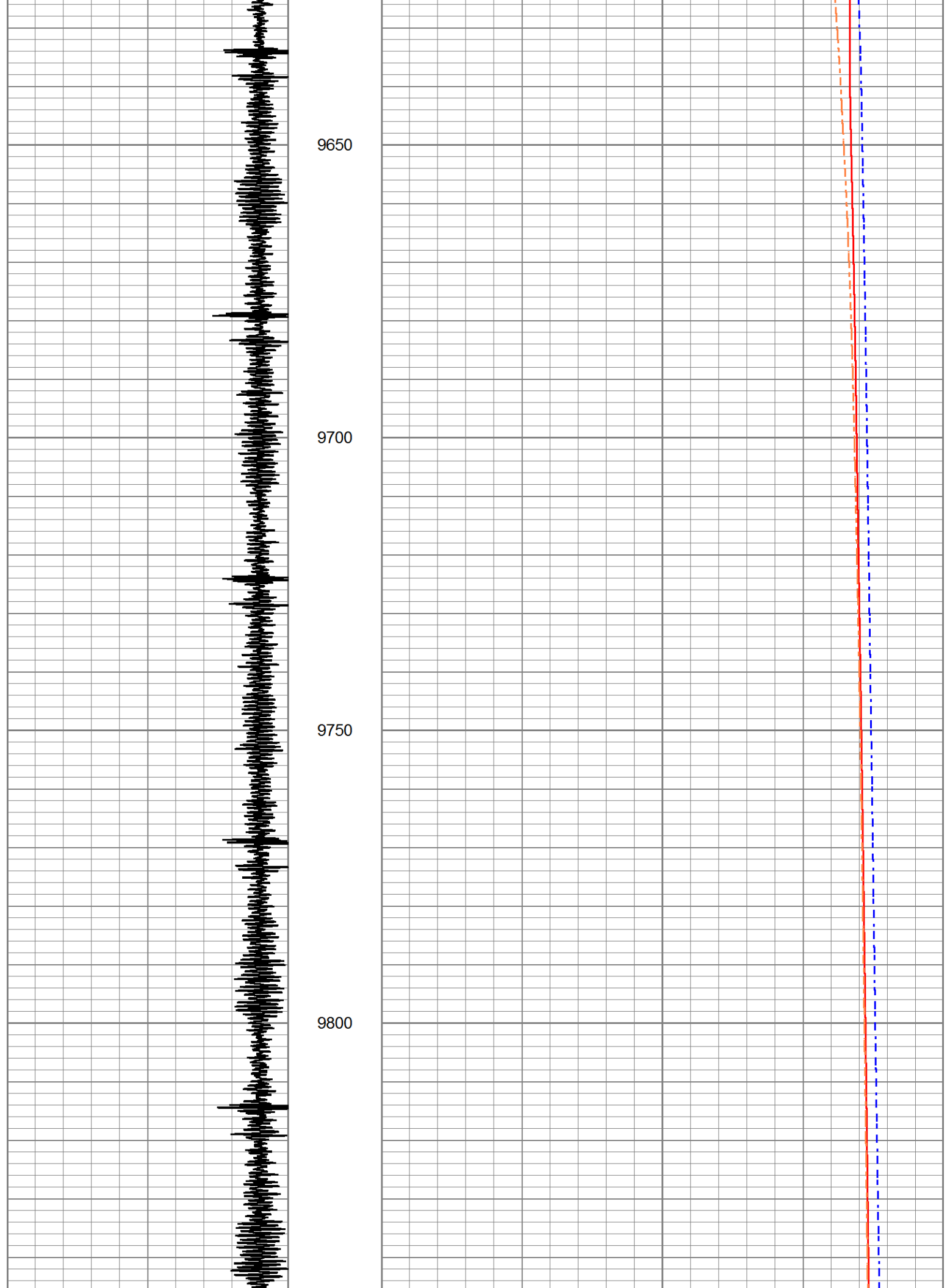
9450

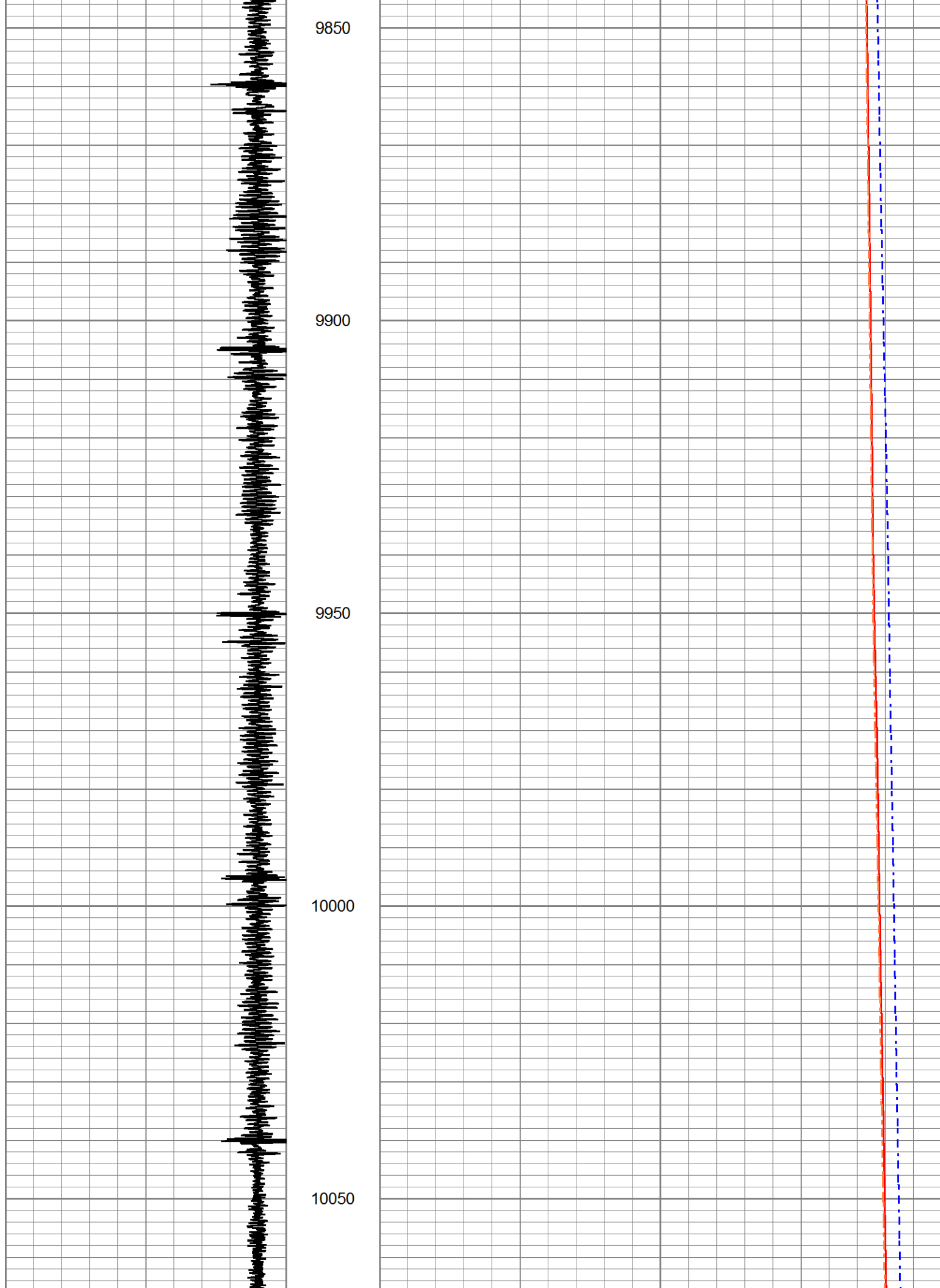
9500

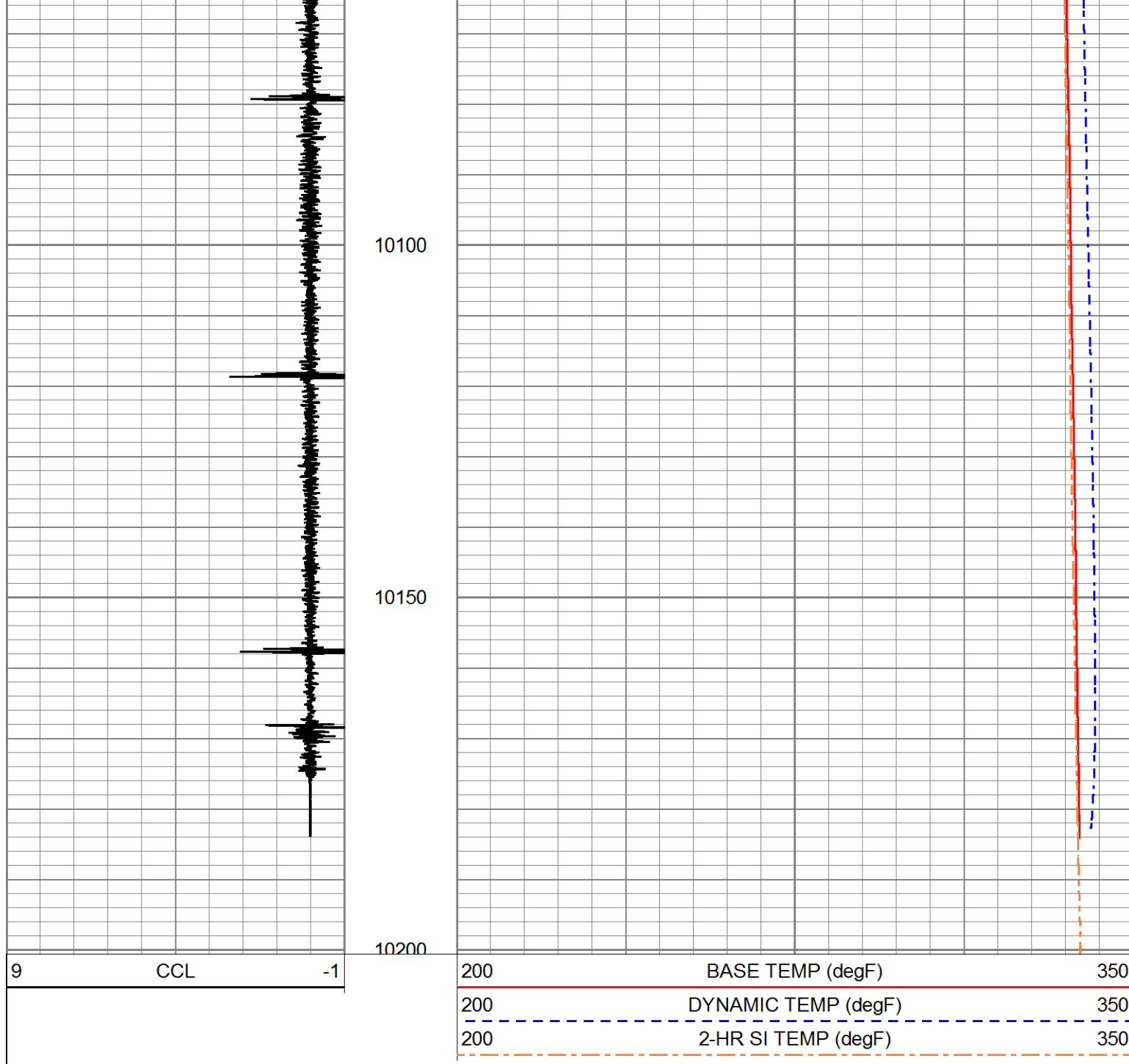
9550

9600



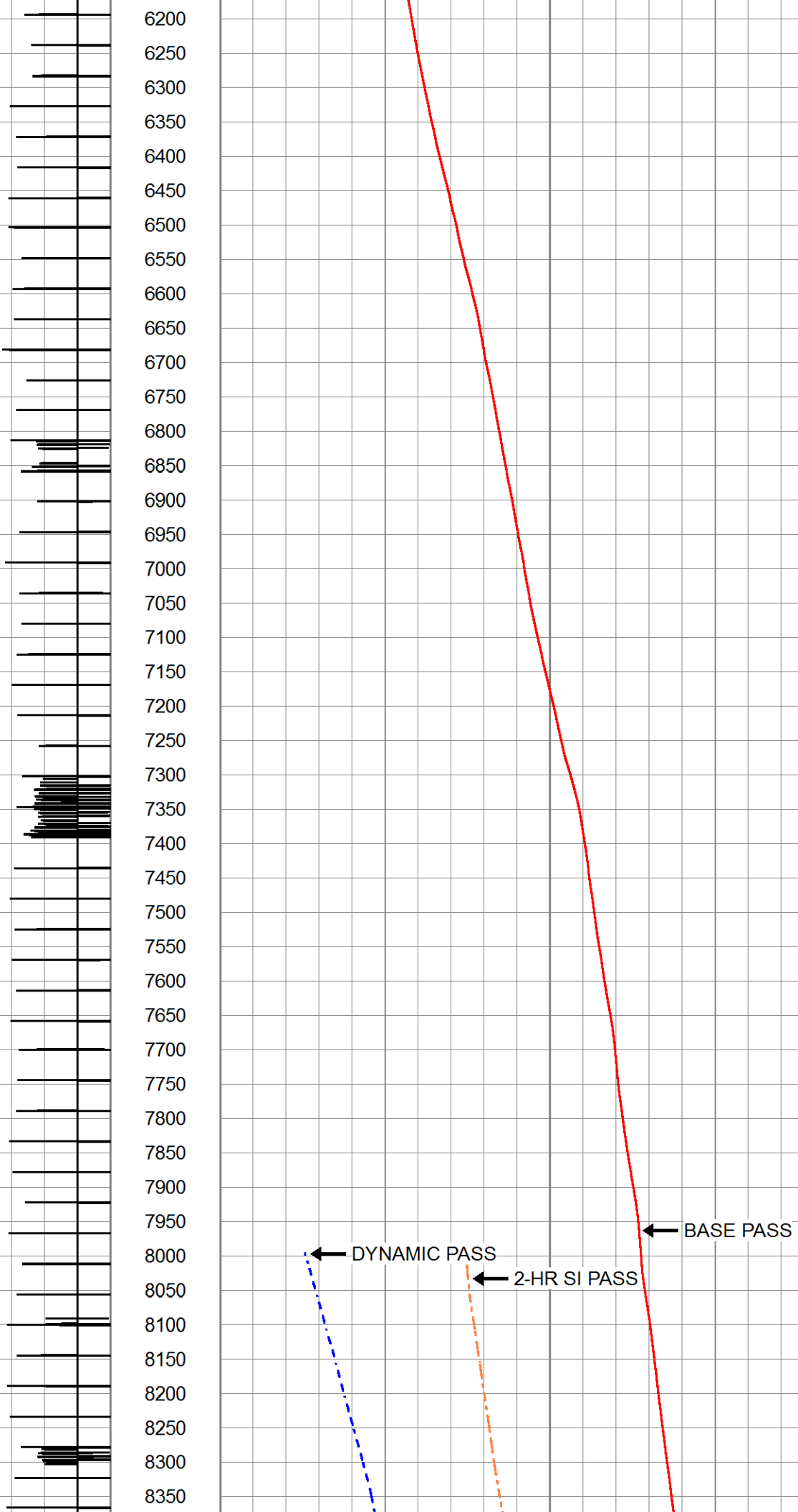


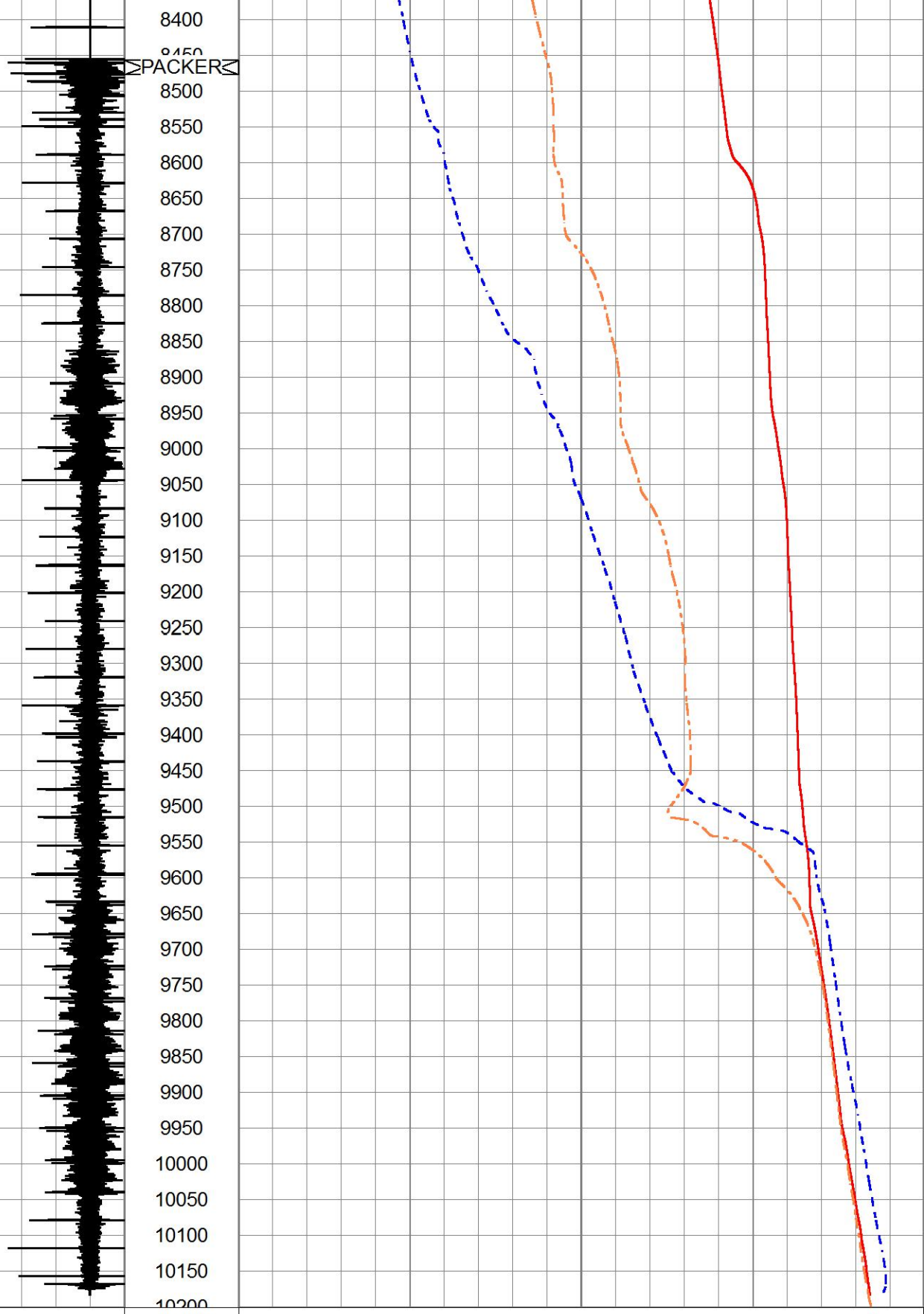




Database File 10307_ews_templog.db
Dataset Pathname ../merge11
Presentation Format temp
Dataset Creation Mon Mar 20 13:58:48 2017
Charted by Depth in Feet scaled 1:2400







9	CCL	-1	200	BASE TEMP (degF)	350
			200	DYNAMIC TEMP (degF)	350
			200	2-HR SI TEMP (degF)	350



Company EXPEDITION WATER SOLUTIONS LLC.
Well EWS #4
Field WATTENBURG



Field	WATFENBERG	
County	WELD	
State	COLORADO	
Country	USA	