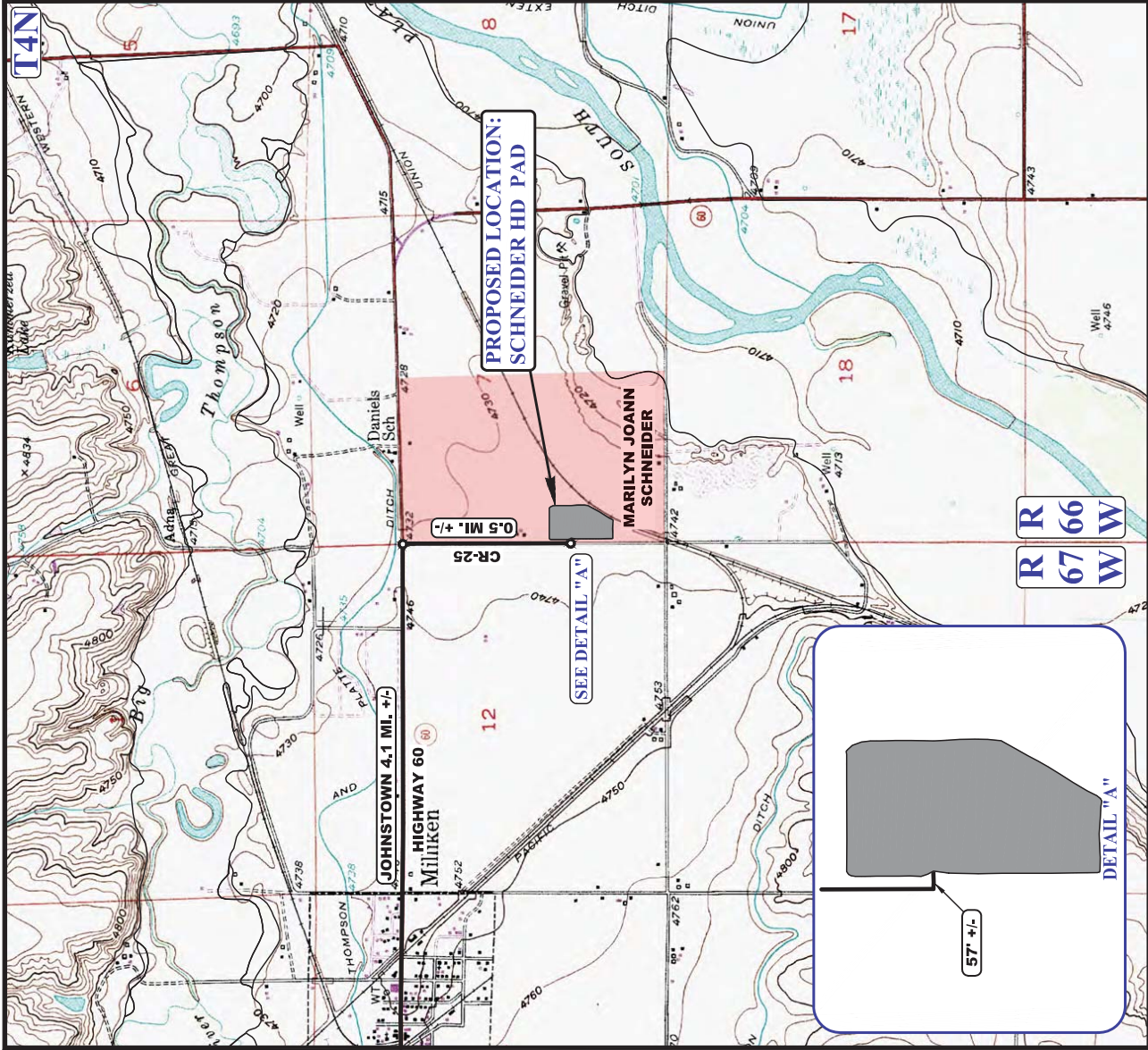


N GREAT WESTERN OPERATING COMPANY
SCHNEIDER HD PAD
SW 1/4 SW 1/4, SECTION 7, T4N, R66W, 6th P.M.
WELD COUNTY, COLORADO

SURVEYED BY	G.W., D.S.	05-27-16	SCALE
DRAWN BY	K.B.	05-31-16	1" = 100,000'
ACCESS ROAD MAP			TOPO A

UELS, LLC
Corporate Office * 85 South 200 East
Vernal, UT 84078 * (435) 789-1017





NOTE: PARCEL DATA SHOWN HAS BEEN OBTAINED FROM VARIOUS SOURCES AND SHOULD BE USED FOR MAPPING, GRAPHIC AND PLANNING PURPOSES ONLY. NO WARRANTY IS MADE BY UINTAH ENGINEERING AND LAND SURVEYING (UELS) FOR ACCURACY OF THE PARCEL DATA.

LEGEND:

EXISTING ROAD

N GREAT WESTERN OPERATING COMPANY

SCHNEIDER HD PAD
SW 1/4 SW 1/4, SECTION 7, T4N, R66W, 6th P.M.
WELD COUNTY, COLORADO

SURVEYED BY	G.W., D.S.	05-27-16	SCALE
DRAWN BY	K.B.	05-31-16	1 : 24,000
ACCESS ROAD MAP			TOPO B

UELS, LLC
Corporate Office * 85 South 200 East
Vernal, UT 84078 * (435) 789-1017

