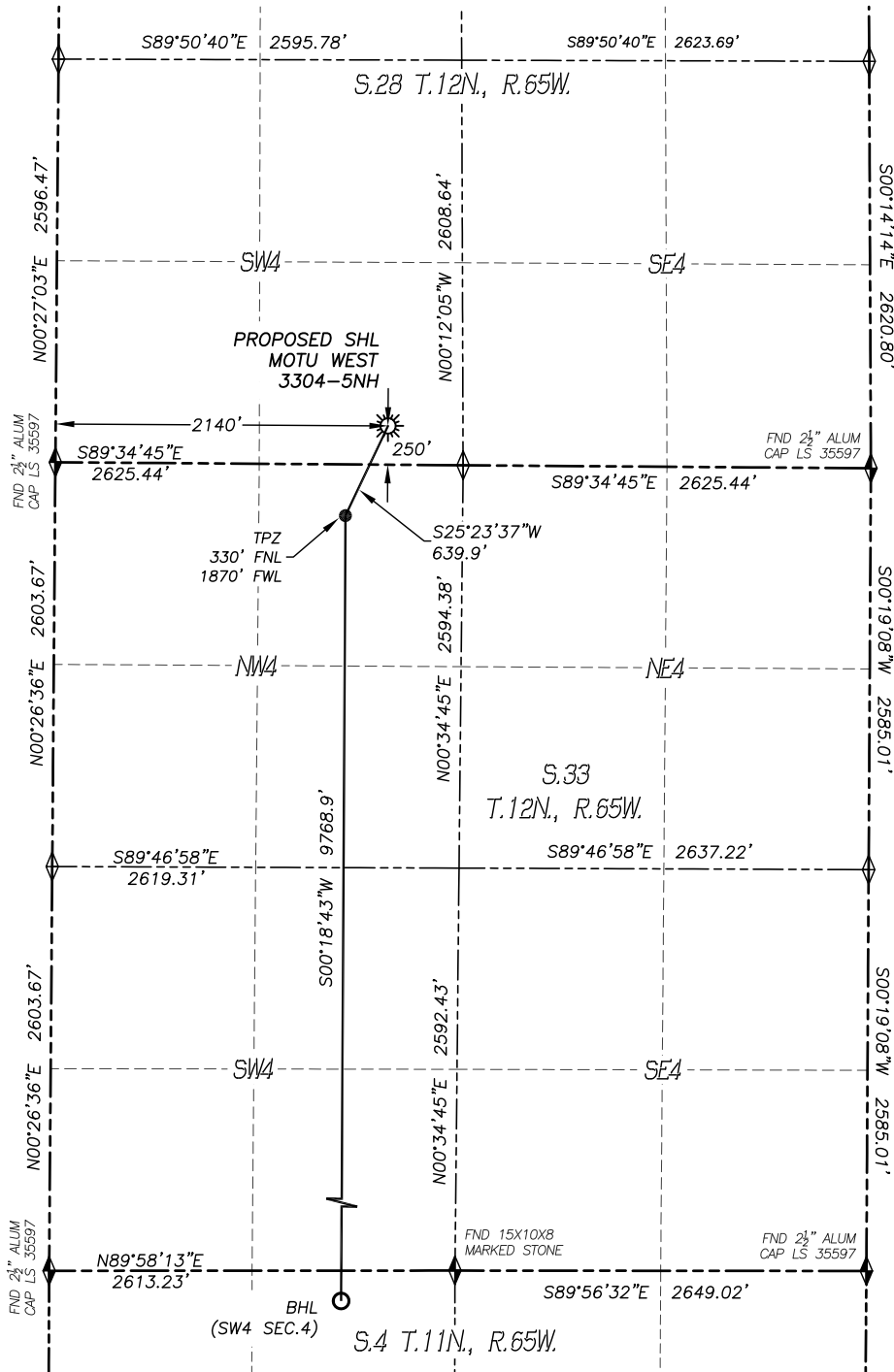


**WELL LOCATION CERTIFICATE**  
**MOTU WEST 3304-5NH**

SECTION: 28  
TOWNSHIP: 12N  
RANGE: 65W



**LEGEND**

- ◆ FOUND MONUMENT
- ◇ CALCULATED POSITION
- ☀ PROPOSED WELL
- BOTTOM HOLE
- ⊙ ABANDONED WELL
- ⊗ EXISTING WELL
- TPZ TOP PRODUCING ZONE

0 600 1200  
SCALE: 1" = 1200'

- NOTES:**
- BEARINGS FOR THIS MAP ARE ASSUMED AND BASED UPON GPS OBSERVATIONS MADE BETWEEN MONUMENTS LOCATED AT THE SOUTHWEST CORNER AND SOUTHEAST CORNER OF SECTION 28, T.12N., R.65W.
  - HORIZONTAL DATUM IS NAD83.
  - VERTICAL DATUM IS NAVD88 AND ORIGINATES FROM THE LOCAL C.O.R.S. NETWORK, UTILIZING THE GEOID12A MODEL.
  - SEE LOCATION DRAWING FOR VISIBLE IMPROVEMENTS WITHIN 500' OF PROPOSED DISTURBED AREA.
  - SURFACE USE: RANGELAND.
  - INST. OPERATOR: TREVOR DALEY

**NEAREST CULTURAL ITEMS:**

1. BUILDING:	5280'+
2. BUILDING UNIT:	5280'+
3. HIGH OCC. BLD. UNIT:	5280'+
4. DES. OUTSIDE ACTIVITY AREA:	5280'+
5. PUBLIC ROAD:	1821'± S
6. ABOVE GROUND UTILITY:	291'± S
7. RAILROAD:	5280'+
8. PROPERTY LINE:	250'± S

**NAD83 LATITUDE AND LONGITUDE**

**SURFACE LOCATION:**

LATITUDE: N40.97174°  
LONGITUDE: W104.66851°  
ELEVATION: 6049'  
PDOP: 1.6  
QTR/QTR: SW4/SW4

**LANDING POINT:**

LATITUDE: N40.97016°  
LONGITUDE: W104.66950°

**BOTTOM HOLE:**

LATITUDE: N40.94335°  
LONGITUDE: W104.66971°

IN ACCORDANCE WITH A REQUEST FROM LONGS PEAK RESOURCES, LLC., DALEY LAND SURVEYING, INC. HAS DETERMINED THE SURFACE LOCATION OF THE MOTU WEST 3304-5NH WELL TO BE 250' FSL, 2140' FWL, AS MEASURED AT NINETY (90) DEGREES FROM THE SECTION LINES OF SECTION 28, TOWNSHIP 12 NORTH, RANGE 65 WEST, AND THE BOTTOM HOLE LOCATION TO BE 330' FSL, 1870' FWL, AS MEASURED AT NINETY (90) DEGREES FROM THE SECTION LINES OF SECTION 4, TOWNSHIP 11 NORTH, RANGE 65 WEST OF THE 6TH PRINCIPAL MERIDIAN, WELD COUNTY, COLORADO.

I HEREBY STATE THAT THIS WELL LOCATION CERTIFICATE WAS PREPARED BY ME OR UNDER MY DIRECT SUPERVISION, THAT THE WORK WAS COMPLETED ON 1/18/2017 FOR AND ON BEHALF OF LONGS PEAK RESOURCES, LLC., AND THAT THIS MAP DOES NOT REPRESENT A BOUNDARY SURVEY, IT IS NOT A LAND SURVEY PLAT OR AN IMPROVEMENT SURVEY PLAT AND IT IS NOT TO BE RELIED UPON FOR THE ESTABLISHMENT OF FENCE, BUILDING OR OTHER FUTURE IMPROVEMENT LINES.



FOR AND ON BEHALF OF  
DALEY LAND SURVEYING, INC.,  
Robert Daley, PLS 35597

