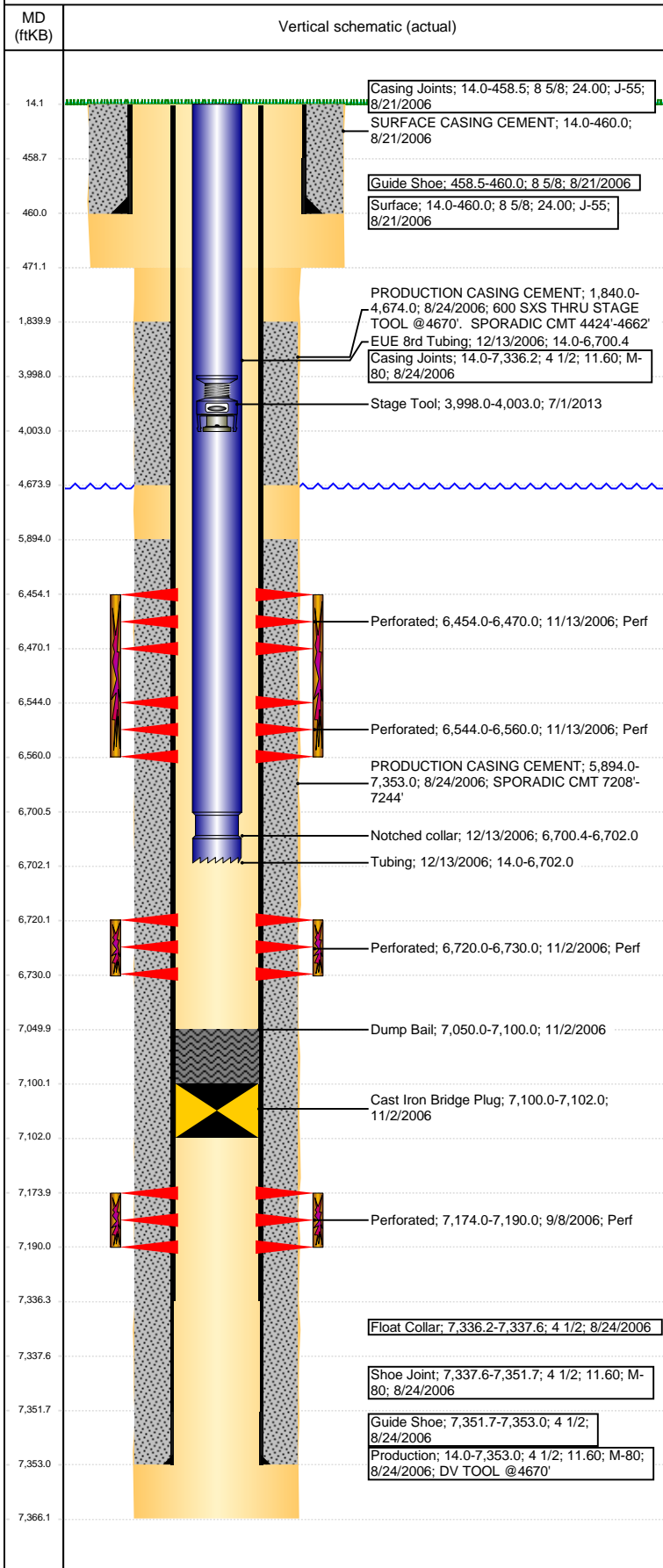


**Well Name: 70 RANCH 41-09**

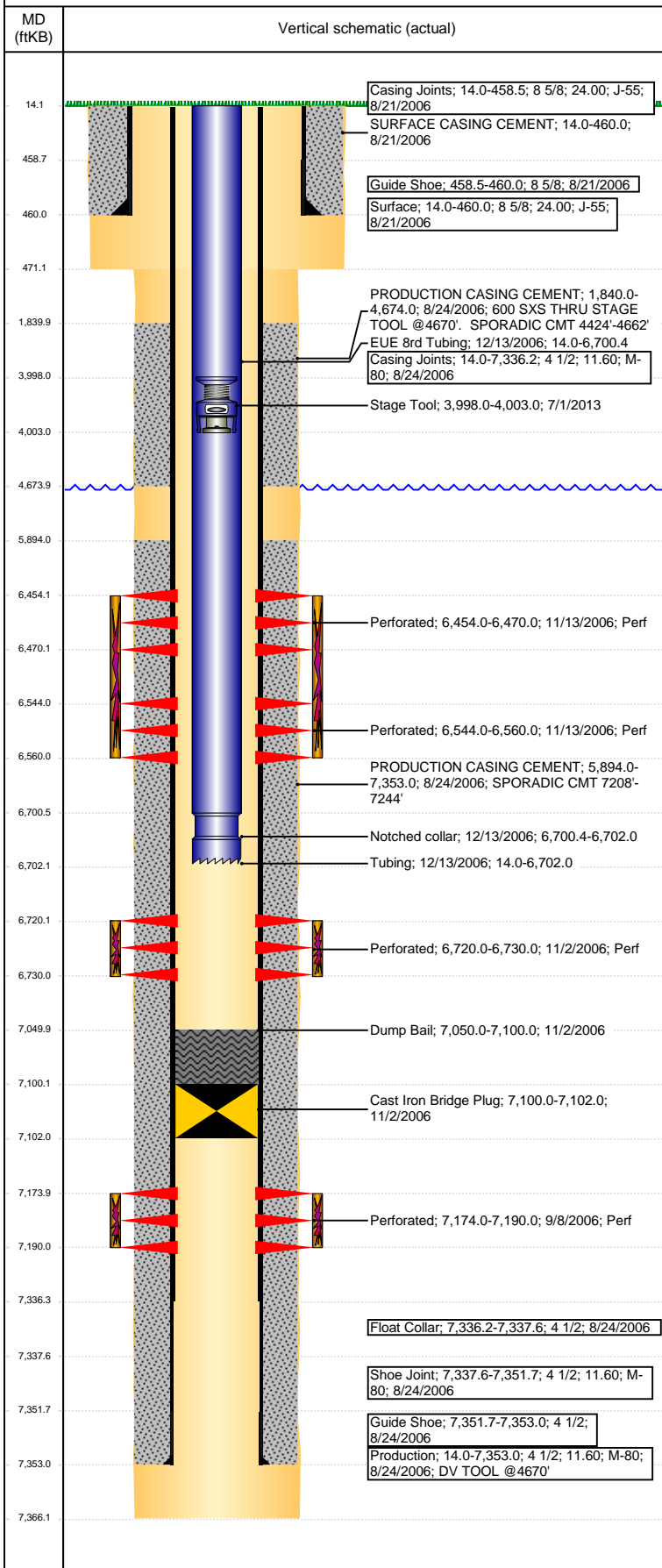
VERTICAL - ORIGINAL HOLE, 3/17/2017 11:33:04 AM



Well Header			
API 05-123-23998	Business Unit DJ BASIN	District 15	Well Config VERTICAL
Original KB Elevation (ft) 4,742	KB - GL / MSL (ftKB) 14.00	Spud Date 8/20/2006	P & A Date
Comment DV TOOL @4670'. 11/2/2006 JSND AB			
Directions To Well			
Congressional Location			
Quarter 3 NE	Quarter 4 NE	Section 9	Township 5
Twntshp N/S Dir N	Range 63	Range E/W Dir W	
Bottom Hole Location			
North-South Distance (ft)	From N or S Line	East-West Distance (ft)	From E or W Line
Plug Back Total Depths			
Date	Depth (ftKB)	Method	Com
8/24/2006	7,336.0	CASING TALLY	GUIDE SHOE @7336'
9/8/2006	7,325.0	CASED HOLE LOG	DEPTH LOGGER ON CBL
11/2/2006	7,100.0	TAG	SET CIBP @7100' PLUS 2 SXS CMT ON TOP
Wellbore Sections			
Section Des	Size (in)	Act Top, MD (ftKB)	Act Btm, MD (ftKB)
SURFACE	12 1/4	14	471
PRODUCTION	7 7/8	471	7,366
Zone Statuses			
Zone Name	Status Date	Status	Fluid Type
NIOBRARA	11/15/2006	PR	
NIOBRARA	9/1/2015	SI	
CODELL	11/15/2006	PR	
CODELL	9/1/2015	SI	
J SAND	2/25/2013	AB	
Casing Strings			
Surface, 460.0ftKB			
Casing Description	Run Date	OD (in)	Wt/Len (L...)
Surface	8/21/2006	8 5/8	24.00
Production, 7,353.0ftKB			
Casing Description	Run Date	OD (in)	Wt/Len (L...)
Production	8/24/2006	4 1/2	11.60
Cement			
Description	Top Depth (ftKB)	Bottom Depth (ftKB)	
SURFACE CASING CEMENT	14.0	460.0	
PRODUCTION CASING CEMENT	1,840.0	4,674.0	
PRODUCTION CASING CEMENT	5,894.0	7,353.0	
Dump Bail	7,050.0	7,100.0	
Tubing Strings			
Tubing Description	Run Date	String...	ID (in)
Tubing	12/13/2006	2 3/8	4.70
Tubing Components			
Item Des	OD (in)	Wt (lb/ft)	Grade
EUE 8rd Tubing	2 3/8	4.70	J-55
Notched collar	2 3/8	1.65	6,702.0
Other In Hole			
Run Date	Des	OD (in)	Top (ftKB)
11/2/2006	Cast Iron Bridge Plug	4	7,100.0
7/1/2013	Stage Tool	2	3,998.0
Logs			
Date	Type	Top, MD (ftKB)	Btm, MD (ftKB)
8/24/2006	COMPENSATED DENSITY	2,600.0	7,342.0
8/24/2006	INDUCTION	14.0	7,362.0
9/8/2006	CEMENT BOND	1,700.0	7,324.0
7/14/2015	GYRO	14.0	6,650.0

**Well Name: 70 RANCH 41-09**

VERTICAL - ORIGINAL HOLE, 3/17/2017 11:33:07 AM



Perforation Data					
Linked Zone	Bnch/St g	Sum of Entered Shot Total	Top (ftKB)	Btm (ftKB)	Date
NIOBRARA, ORIGINAL HOLE		96	6,454.00	6,470.00	11/13/2006
NIOBRARA, ORIGINAL HOLE		96	6,544.00	6,560.00	11/13/2006
CODELL, ORIGINAL HOLE		40	6,720.00	6,730.00	11/2/2006
J SAND, ORIGINAL HOLE		64	7,174.00	7,190.00	9/8/2006
Total (Sum)		296			
Stimulation Intervals					
Start Date		Primary Job Type			
10/13/2006		DRILLING/COMPLETION - ORIGINAL			
Technical Result		Tech Result Details		Tech Result Note	
Comment					
Start Date		Primary Job Type			
11/13/2006		DRILLING/COMPLETION - ORIGINAL			
Technical Result		Tech Result Details		Tech Result Note	
Comment					
Start Date		Primary Job Type			
11/13/2006		DRILLING/COMPLETION - ORIGINAL			
Technical Result		Tech Result Details		Tech Result Note	
Comment					