



Kerr-McGee Oil & Gas Onshore LP

A subsidiary of Anadarko Petroleum Corporation

1099 18th Street
Denver, CO 80202
720-929-6000

March 15, 2017

Matt Lepore
Director, Colorado Oil and Gas Conservation Commission
Department of Natural Resources
The Chancery Building
1120 Lincoln Street, Suite 801
Denver, CO 80203

Re: **30 Day Certification Letter - 318A.e**
CANNON 28N-9HZ (Doc No. 401178705)
Township 3 North, Range 65 West
Section 33: NENE
Unit Acreage: 800 Acres
Unit Spacing: 3N65W SEC 33: E2
3N65W SEC 28: S2SE
2N65W SEC 4: E2
2N65W SEC 9: N2NE
Weld County, Colorado


Dear Director Lepore:

Kerr-McGee Oil and Gas Onshore LP ("KMG") hereby certifies that a thirty (30) day notice has been given by certified mail to all mineral owners in the proposed wellbore spacing unit. We have not received any objections to such well location, proposed spacing unit, or additional producing formation. KMG hereby respectfully requests approval of this boundary well.

If you have any questions or issues regarding this permit, please contact our office.

Sincerely,

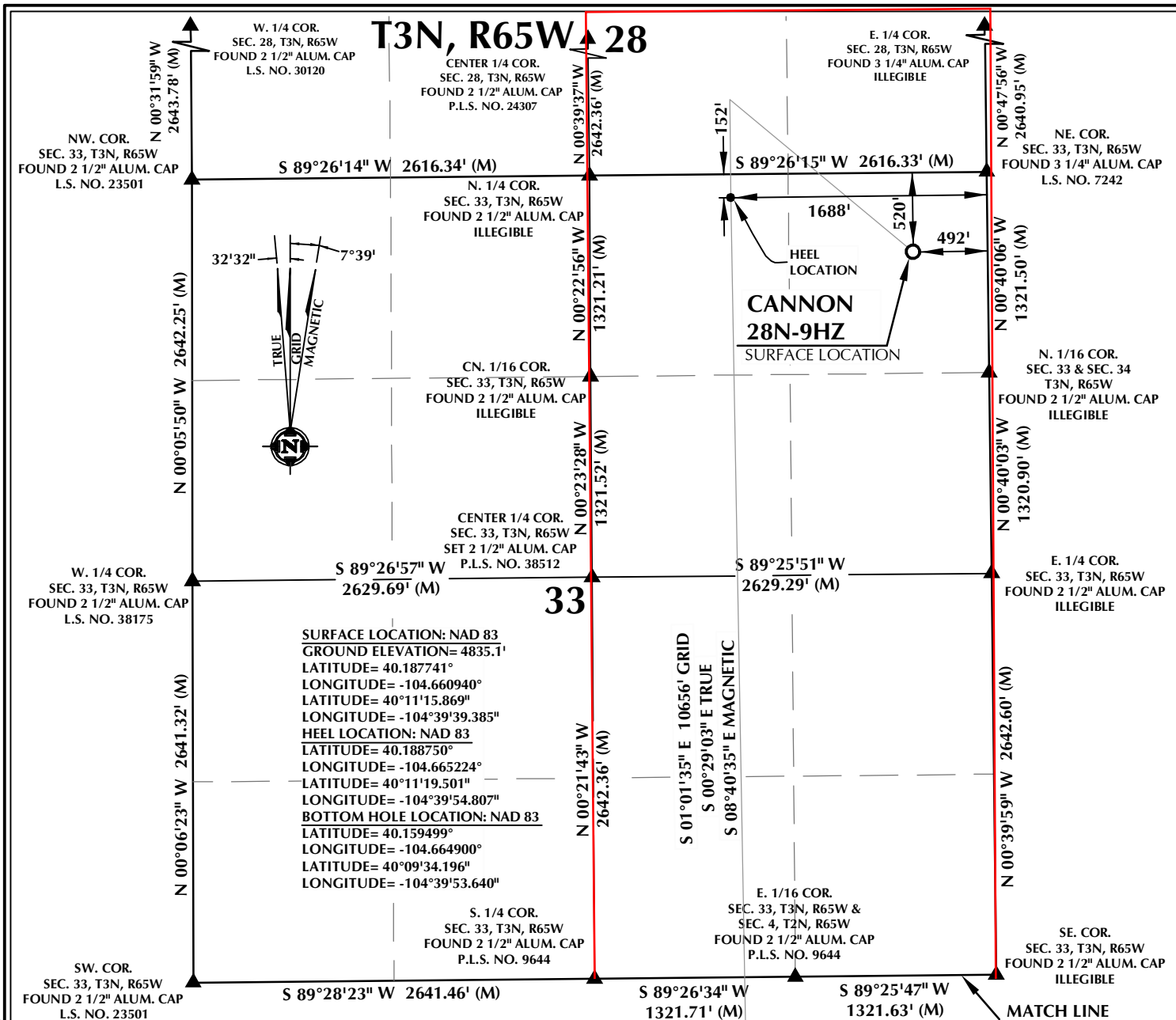
Kerr-McGee Oil and Gas Onshore LP


Shayelyn Marshall
Regulatory Analyst I

Enclosure

PROPOSED SPACING UNIT

T3N, R65W 28



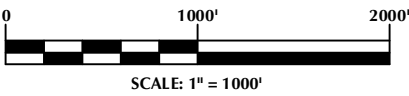
SURFACE LOCATION: NAD 83
 GROUND ELEVATION= 4835.7'
 LATITUDE= 40.187741°
 LONGITUDE= -104.660940°
 LATITUDE= 40°11'15.869"
 LONGITUDE= -104°39'39.385"
HEEL LOCATION: NAD 83
 LATITUDE= 40.188750°
 LONGITUDE= -104.665224°
 LATITUDE= 40°11'19.501"
 LONGITUDE= -104°39'54.807"
BOTTOM HOLE LOCATION: NAD 83
 LATITUDE= 40.159499°
 LONGITUDE= -104.664900°
 LATITUDE= 40°09'34.196"
 LONGITUDE= -104°39'53.640"

CERTIFICATE OF SURVEYOR:

THIS IS TO CERTIFY THAT THE ABOVE PLAT WAS PREPARED FROM FIELD NOTES OF ACTUAL SURVEY MADE BY ME OR UNDER MY SUPERVISION AND THAT THE SAME ARE TRUE AND CORRECT TO THE BEST OF MY KNOWLEDGE AND BELIEF. THIS CERTIFICATE DOES NOT REPRESENT A LAND SURVEY PLAT OR IMPROVEMENT SURVEY PLAT AS DEFINED BY C.R.S. 38-51-302 AND CANNOT BE RELIED UPON TO DETERMINE OWNERSHIP.

Randall K. French
 RANDALL K. FRENCH
 PROFESSIONAL LAND SURVEYOR
 COLORADO REGISTRATION NUMBER 38512
 12/1/16

NOTICE:
 ACCORDING TO COLORADO STATE LAW YOU MUST COMMENCE ANY LEGAL ACTION BASED UPON ANY DEFECT IN THIS SURVEY WITHIN THREE YEARS AFTER YOU FIRST DISCOVER SUCH DEFECT. IN NO EVENT MAY ANY ACTION BASED UPON ANY DEFECT IN THIS SURVEY BE COMMENCED MORE THAN TEN YEARS FROM THE DATE ON THE CERTIFICATION SHOWN HEREON.



NOTE:
 MAGNETIC NORTH IS CURRENT AS OF 11/15/2016.
 MAGNETIC NORTH CHANGES WEST 0°06' PER YEAR.


NOTES:

1. ▲ INDICATES SECTION CORNER
2. ● INDICATES CALCULATED CORNER
3. ELEVATION BASED ON NAVD88 (GEOID12B)
4. BASIS OF BEARING DERIVED FROM COLORADO COORDINATE SYSTEM OF 1983 NORTH ZONE.
5. ALL MEASURED DISTANCES ARE GRID.
6. COMBINED SCALE FACTOR: .99972912 CALCULATED FROM THE N. 1/4 CORNER OF SECTION 33
7. OPERATOR: ROB WILSON / PDOP = 1.3
8. SEE ADDENDUM TO WELL LOCATION CERTIFICATE FOR EXISTING IMPROVEMENTS WITHIN 500' OF THE WELL PAD.
9. WELL FOOTAGES ARE MEASURED AT RIGHT ANGLES TO THE SECTION LINES.
10. THE BOTTOM OF HOLE BEARS S01°01'35"E, 10656' FROM THE HEEL LOCATION.

WELL PAD - CANNON 27C-9HZ

CANNON 28N-9HZ
 LOCATION CERTIFICATE
 520' FNL & 492' FEL NENE (SURFACE)
 152' FNL & 1688' FEL NWNE (HEEL)
 LOCATED IN SECTION 33
 T3N, R65W, 6TH P.M.
 366' FNL & 1554' FEL NWNE (BOTTOM)
 LOCATED IN SECTION 9
 T2N, R65W, 6TH P.M.
 WELD COUNTY, COLORADO

**Kerr-McGee Oil &
 Gas Onshore L.P.**
 1099 18th Street
 Denver, Colorado 80202



609

CONSULTING, LLC

SHERIDAN OFFICE
 1095 Saberton Avenue
 Sheridan, Wyoming 82801
 Phone 307-674-0609

LOVELAND OFFICE
 1635 Foxtrail Drive, Suite 204
 Loveland, Colorado 80538
 Phone 970-776-4331

DRAFTED BY:	LMO	CHECKED BY:	RKF
DATE DRAFTED:	12/1/16	DATE SURVEYED:	9/15/16
REVISED:		FILE NAME:	16-75

SHEET NO:
1
1 OF 3

K:\ADAR\2016\2016_75_CANNON_LAND_T3N_R65W_SEC_33\PLATS\CANNON_27C-9HZ_PLAT.dwg, 12/20/2016 9:25:02 AM, Rkb

PROPOSED SPACING UNIT

T2N, R65W

N. 1/4 COR.
SEC. 4, T2N, R65W
FOUND 2 1/2" ALUM. CAP
P.L.S. NO. 9644

S 89°26'34" W
1321.71' (M)

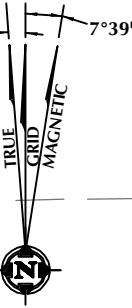
S 89°25'47" W
1321.63' (M)

NE COR.
SEC. 4, T2N, R65W
FOUND 2 1/2" ALUM. CAP
ILLEGIBLE

E. 1/16 COR.
SEC. 33, T3N, R65W &
SEC. 4, T2N, R65W
FOUND 2 1/2" ALUM. CAP
P.L.S. NO. 9644

MATCH LINE
SEE SHEET 1

NW COR.
SEC. 4, T2N, R65W
FOUND 2 1/2" ALUM. CAP
L.S. NO. 23501



CENTER 1/4 COR.
SEC. 4, T2N, R65W
FOUND 3 1/4" ALUM. CAP
L.S. NO. 33642

S 01°01'35" E 10656' GRID
S 00°29'03" E TRUE
S 08°40'35" E MAGNETIC

N 00°02'19" E
2511.57' (M)

N 00°00'29" E 2507.56' (M)

N 00°02'17" E
2641.65' (M)

N 00°00'40" E 2655.67' (M)

W. 1/4 COR.
SEC. 4, T2N, R65W
FOUND 3 1/4" ALUM. CAP
L.S. NO. 13155

S 89°20'38" W
2645.58' (M)

S 89°22'15" W
1322.35' (M)

S 89°19'43" W
1322.36' (M)

E. 1/4 COR.
SEC. 4, T2N, R65W
FOUND 3 1/4" ALUM. CAP
L.S. NO. 13155

CE. 1/16 COR.
SEC. 4, T2N, R65W
FOUND 2 1/2" ALUM. CAP
P.L.S. NO. 9644

SURFACE LOCATION: NAD 83
GROUND ELEVATION= 4835.1'
LATITUDE= 40.187741°
LONGITUDE= -104.660940°
LATITUDE= 40°11'15.869"
LONGITUDE= -104°39'39.385"
HEEL LOCATION: NAD 83
LATITUDE= 40.188750°
LONGITUDE= -104.665224°
LATITUDE= 40°11'19.501"
LONGITUDE= -104°39'54.807"
BOTTOM HOLE LOCATION: NAD 83
LATITUDE= 40.159499°
LONGITUDE= -104.664900°
LATITUDE= 40°09'34.196"
LONGITUDE= -104°39'53.640"

SW. COR.
SEC. 4, T2N, R65W
FOUND 3 1/4" ALUM. CAP
L.S. NO. 7242

S 89°39'10" W 2646.01' (M)

S. 1/4 COR.
SEC. 4, T2N, R65W
FOUND 3 1/4" ALUM. CAP
L.S. NO. 13155

S 89°39'13" W 2645.83' (M)

SE COR.
SEC. 4, T2N, R65W
FOUND 3 1/4" ALUM. CAP
L.S. NO. 13155

MATCH LINE
SEE SHEET 3

WELL BORE CONTINUES
INTO SECTION 9

CERTIFICATE OF SURVEYOR:

THIS IS TO CERTIFY THAT THE ABOVE PLAT WAS PREPARED FROM FIELD NOTES OF ACTUAL SURVEY MADE BY ME OR UNDER MY SUPERVISION AND THAT THE SAME ARE TRUE AND CORRECT TO THE BEST OF MY KNOWLEDGE AND BELIEF. THIS CERTIFICATE DOES NOT REPRESENT A LAND SURVEY, PLAT OR IMPROVEMENT SURVEY PLAT AS DEFINED BY C.R.S. 38-51-102 AND CANNOT BE RELIED UPON TO DETERMINE OWNERSHIP.

Randall K. French
PROFESSIONAL LAND SURVEYOR
COLORADO REGISTRATION NUMBER 38512
12/1/16

NOTICE:
ACCORDING TO COLORADO STATE LAW YOU MUST COMMENCE ANY LEGAL ACTION BASED UPON ANY DEFECT IN THIS SURVEY WITHIN THREE YEARS AFTER YOU FIRST DISCOVER SUCH DEFECT. IN NO EVENT MAY ANY ACTION BASED UPON ANY DEFECT IN THIS SURVEY BE COMMENCED MORE THAN TEN YEARS FROM THE DATE ON THE CERTIFICATION SHOWN HEREON.

NOTES:

1. ▲ INDICATES SECTION CORNER
2. ● INDICATES CALCULATED CORNER
3. ELEVATION BASED ON NAVD88 (GEOID12B)
4. BASIS OF BEARING DERIVED FROM COLORADO COORDINATE SYSTEM OF 1983 NORTH ZONE.
5. ALL MEASURED DISTANCES ARE GRID.
6. COMBINED SCALE FACTOR: .99972912 CALCULATED FROM THE N. 1/4 CORNER OF SECTION 33, T3N, R65W
7. OPERATOR: ROB WILSON / PDOP = 1.3
8. SEE ADDENDUM TO WELL LOCATION CERTIFICATE FOR EXISTING IMPROVEMENTS WITHIN 500' OF THE WELL PAD.
9. WELL FOOTAGES ARE MEASURED AT RIGHT ANGLES TO THE SECTION LINES.
10. THE BOTTOM OF HOLE BEARS S01°01'35"E, 10656' FROM THE HEEL LOCATION.



NOTE:
MAGNETIC NORTH IS CURRENT AS OF 11/15/2016.
MAGNETIC NORTH CHANGES WEST 0°06' PER YEAR.

WELL PAD - CANNON 27C-9HZ

CANNON 28N-9HZ
LOCATION CERTIFICATE
520' FNL & 492' FEL NENE (SURFACE)
152' FNL & 1688' FEL NWNE (HEEL)
LOCATED IN SECTION 33
T3N, R65W, 6TH P.M.
366' FNL & 1554' FEL NWNE (BOTTOM)
LOCATED IN SECTION 9
T2N, R65W, 6TH P.M.
WELD COUNTY, COLORADO

**Kerr-McGee Oil &
Gas Onshore L.P.**
1099 18th Street
Denver, Colorado 80202



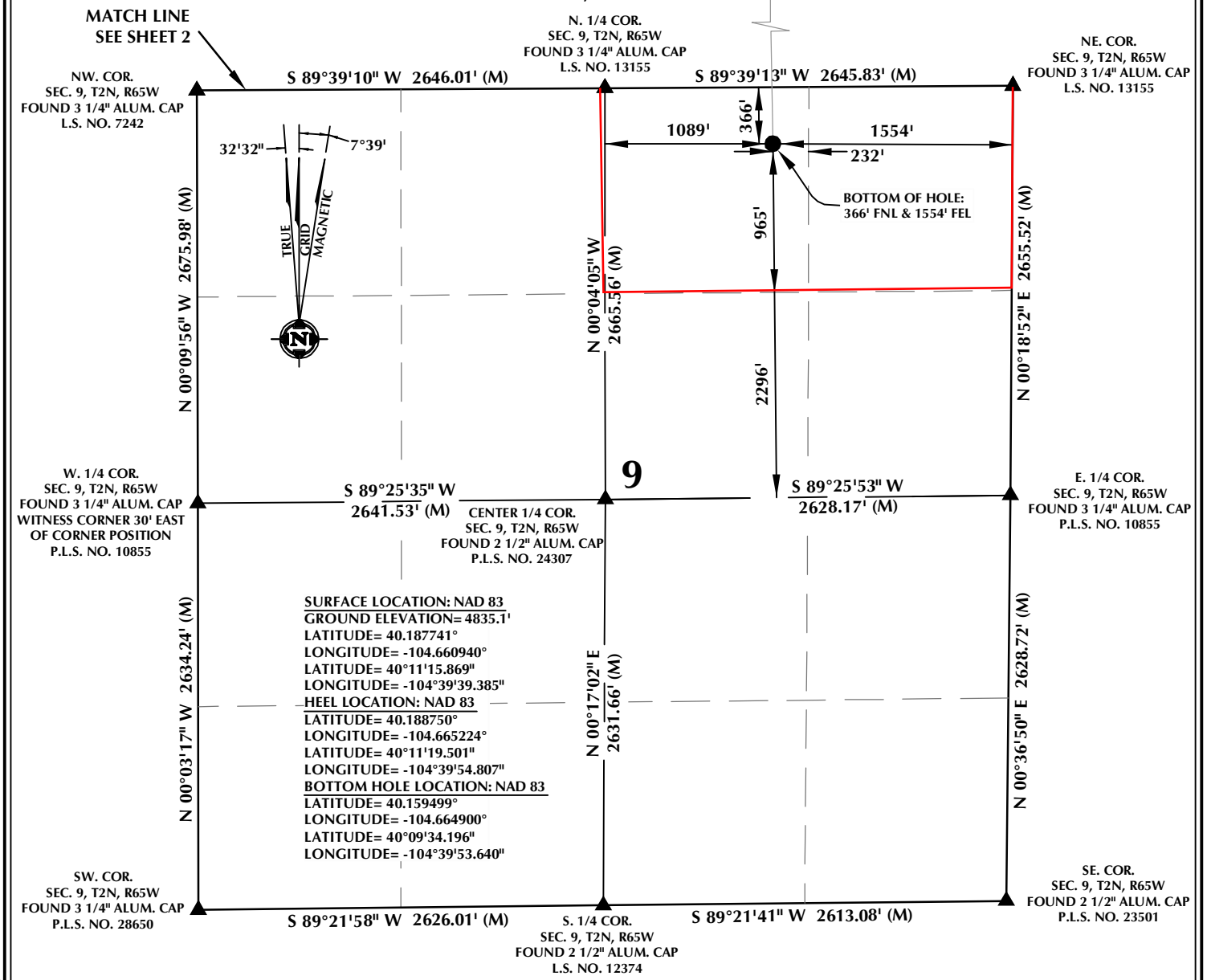
CONSULTING, LLC

SHERIDAN OFFICE LOVELAND OFFICE
1095 Saberton Avenue 1635 Foxtrail Drive, Suite 204
Sheridan, Wyoming 82801 Loveland, Colorado 80538
Phone 307-674-0609 Phone 970-776-4331

DRAFTED BY: LMO	CHECKED BY: RKF	SHEET NO:	2
DATE DRAFTED: 12/1/16	DATE SURVEYED: 9/15/16	FILE NAME:	16-75
REVISED:			2 OF 3

PROPOSED SPACING UNIT

T2N, R65W



CERTIFICATE OF SURVEYOR:

THIS IS TO CERTIFY THAT THE ABOVE PLAT WAS PREPARED FROM FIELD NOTES OF ACTUAL SURVEY MADE BY ME OR UNDER MY SUPERVISION AND THAT THE SAME ARE TRUE AND CORRECT TO THE BEST OF MY KNOWLEDGE AND BELIEF. THIS CERTIFICATE DOES NOT REPRESENT A LAND SURVEY PLAT OR IMPROVEMENT SURVEY PLAT AS DEFINED BY C.R.S. 38-51-102 AND CANNOT BE RELIED UPON TO DETERMINE OWNERSHIP.

Randall K. French
PROFESSIONAL LAND SURVEYOR
COLORADO REGISTRATION NUMBER 38512
12/1/16

NOTICE:
ACCORDING TO COLORADO STATE LAW YOU MUST COMMENCE ANY LEGAL ACTION BASED UPON ANY DEFECT IN THIS SURVEY WITHIN THREE YEARS AFTER YOU FIRST DISCOVER SUCH DEFECT. IN NO EVENT MAY ANY ACTION BASED UPON ANY DEFECT IN THIS SURVEY BE COMMENCED MORE THAN TEN YEARS FROM THE DATE ON THE CERTIFICATION SHOWN HEREON.

NOTES:

- ▲ INDICATES SECTION CORNER
- INDICATES CALCULATED CORNER
- ELEVATION BASED ON NAVD88 (GEOID12B)
- BASIS OF BEARING DERIVED FROM COLORADO COORDINATE SYSTEM OF 1983 NORTH ZONE.
- ALL MEASURED DISTANCES ARE GRID.
- COMBINED SCALE FACTOR: .99972912 CALCULATED FROM THE N. 1/4 CORNER OF SECTION 33, T3N, R65W
- OPERATOR: ROB WILSON / PDOP = 1.3
- SEE ADDENDUM TO WELL LOCATION CERTIFICATE FOR EXISTING IMPROVEMENTS WITHIN 500' OF THE WELL PAD.
- WELL FOOTAGES ARE MEASURED AT RIGHT ANGLES TO THE SECTION LINES.
- THE BOTTOM OF HOLE BEARS S01°01'35"E, 10656' FROM THE HEEL LOCATION.

WELL PAD - CANNON 27C-9HZ

CANNON 28N-9HZ
LOCATION CERTIFICATE
520' FNL & 492' FEL NENE (SURFACE)
152' FNL & 1688' FEL NWNE (HEEL)
LOCATED IN SECTION 33
T3N, R65W, 6TH P.M.
366' FNL & 1554' FEL NWNE (BOTTOM)
LOCATED IN SECTION 9
T2N, R65W, 6TH P.M.
WELD COUNTY, COLORADO

Kerr-McGee Oil & Gas Onshore L.P.
1099 18th Street
Denver, Colorado 80202



CONSULTING, LLC

SHERIDAN OFFICE
1095 Saberton Avenue
Sheridan, Wyoming 82801
Phone 307-674-0609

LOVELAND OFFICE
1635 Foxtrail Drive, Suite 204
Loveland, Colorado 80538
Phone 970-776-4331

DRAFTED BY:	LMO	CHECKED BY:	RKF	SHEET NO:
DATE DRAFTED:	12/1/16	DATE SURVEYED:	9/15/16	3
REVISED:		FILE NAME:	16-75	3 OF 3