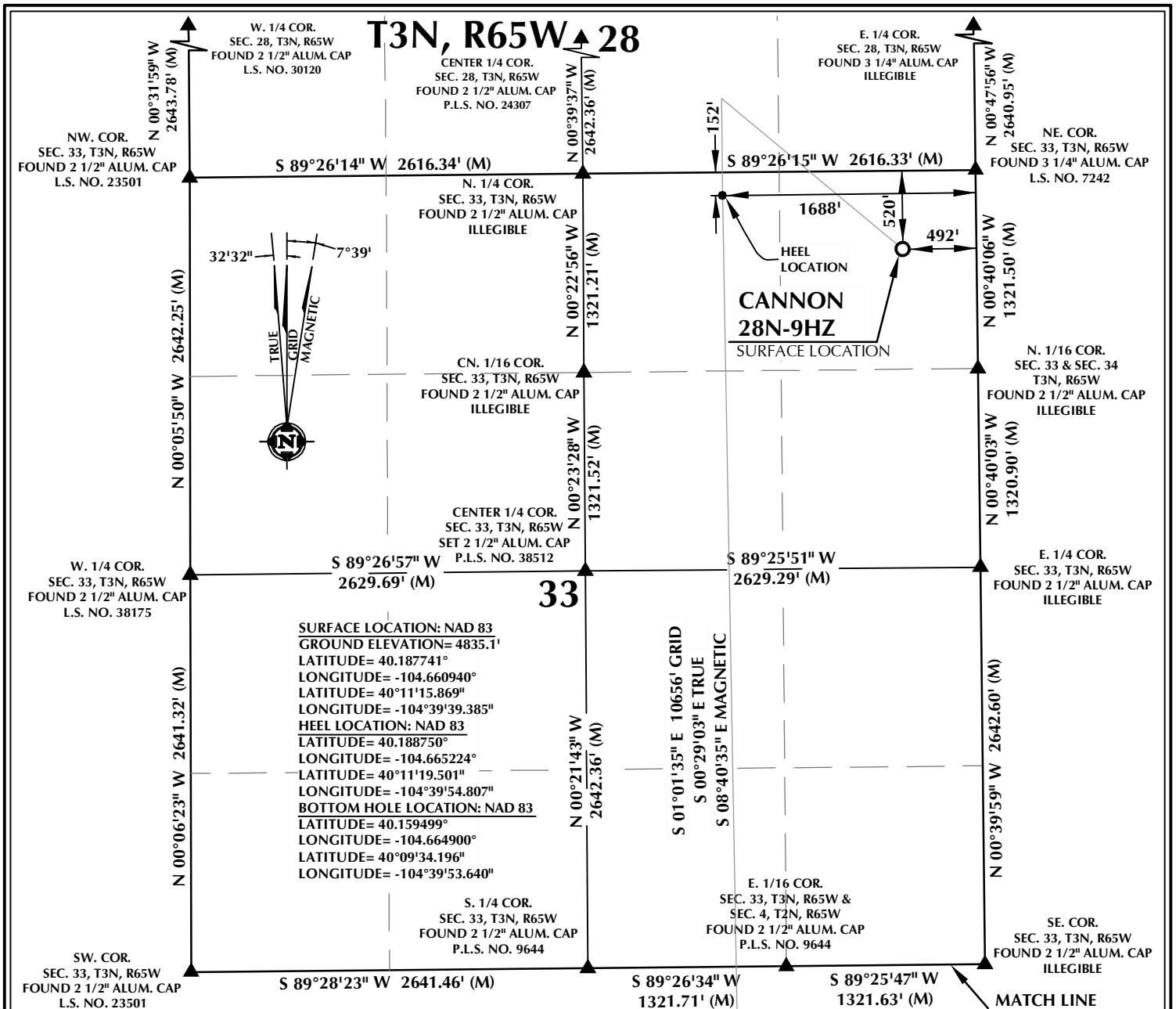


T3N, R65W 28



SURFACE LOCATION: NAD 83
 GROUND ELEVATION= 4835.7'
 LATITUDE= 40.187741°
 LONGITUDE= -104.660940°
 LATITUDE= 40°11'15.869"
 LONGITUDE= -104°39'39.385"
HEEL LOCATION: NAD 83
 LATITUDE= 40.188750°
 LONGITUDE= -104.665224°
 LATITUDE= 40°11'19.501"
 LONGITUDE= -104°39'54.807"
BOTTOM HOLE LOCATION: NAD 83
 LATITUDE= 40.159499°
 LONGITUDE= -104.664900°
 LATITUDE= 40°09'34.196"
 LONGITUDE= -104°39'53.640"

CERTIFICATE OF SURVEYOR:

THIS IS TO CERTIFY THAT THE ABOVE PLAT WAS PREPARED FROM FIELD NOTES OF ACTUAL SURVEY MADE BY ME OR UNDER MY SUPERVISION AND THAT THE SAME ARE TRUE AND CORRECT TO THE BEST OF MY KNOWLEDGE AND BELIEF. THIS CERTIFICATE DOES NOT REPRESENT A LAND SURVEY PLAT OR IMPROVEMENT SURVEY PLAT AS DEFINED BY C.R.S. 38-51-102 AND CANNOT BE RELIED UPON TO DETERMINE OWNERSHIP.

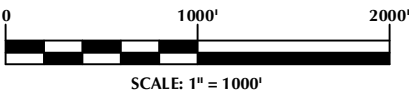
Randall K. French
 RANDALL K. FRENCH
 PROFESSIONAL LAND SURVEYOR
 COLORADO REGISTRATION NUMBER 38512
 12/1/16

NOTICE:
 ACCORDING TO COLORADO STATE LAW YOU MUST COMMENCE ANY LEGAL ACTION BASED UPON ANY DEFECT IN THIS SURVEY WITHIN THREE YEARS AFTER YOU FIRST DISCOVER SUCH DEFECT. IN NO EVENT MAY ANY ACTION BASED UPON ANY DEFECT IN THIS SURVEY BE COMMENCED MORE THAN TEN YEARS FROM THE DATE ON THE CERTIFICATION SHOWN HEREON.

WELL BORE CONTINUES INTO SECTION 4, T2N, R65W

NOTES:

- ▲ INDICATES SECTION CORNER
- INDICATES CALCULATED CORNER
- ELEVATION BASED ON NAVD88 (GEOID12B)
- BASIS OF BEARING DERIVED FROM COLORADO COORDINATE SYSTEM OF 1983 NORTH ZONE.
- ALL MEASURED DISTANCES ARE GRID.
- COMBINED SCALE FACTOR: .99972912 CALCULATED FROM THE N. 1/4 CORNER OF SECTION 33
- OPERATOR: ROB WILSON / PDOP = 1.3
- SEE ADDENDUM TO WELL LOCATION CERTIFICATE FOR EXISTING IMPROVEMENTS WITHIN 500' OF THE WELL PAD.
- WELL FOOTAGES ARE MEASURED AT RIGHT ANGLES TO THE SECTION LINES.
- THE BOTTOM OF HOLE BEARS S01°01'35"E, 10656' FROM THE HEEL LOCATION.



NOTE:
 MAGNETIC NORTH IS CURRENT AS OF 11/15/2016.
 MAGNETIC NORTH CHANGES WEST 0°06' PER YEAR.

WELL PAD - CANNON 27C-9HZ

CANNON 28N-9HZ
 LOCATION CERTIFICATE
 520' FNL & 492' FEL NENE (SURFACE)
 152' FNL & 1688' FEL NWNE (HEEL)
 LOCATED IN SECTION 33
 T3N, R65W, 6TH P.M.
 366' FNL & 1554' FEL NWNE (BOTTOM)
 LOCATED IN SECTION 9
 T2N, R65W, 6TH P.M.
 WELD COUNTY, COLORADO

Kerr-McGee Oil & Gas Onshore L.P.
 1099 18th Street
 Denver, Colorado 80202



CONSULTING, LLC

SHERIDAN OFFICE
 1095 Saberton Avenue
 Sheridan, Wyoming 82801
 Phone 307-674-0609

LOVELAND OFFICE
 1635 Foxtrail Drive, Suite 204
 Loveland, Colorado 80538
 Phone 970-776-4331

DRAFTED BY:	LMO	CHECKED BY:	RKF	SHEET NO:
DATE DRAFTED:	12/1/16	DATE SURVEYED:	9/15/16	1
REVISED:		FILE NAME:	16-75	1 OF 3

K:\ADAR\2016\2016_75_CANNON_LAND_T3N_R65W_SEC_33\PLATS\CANNON_27C-9HZ_PLAT.dwg, 12/20/2016 9:25:02 AM, Rkb

T2N, R65W

N. 1/4 COR.
SEC. 4, T2N, R65W
FOUND 2 1/2" ALUM. CAP
P.L.S. NO. 9644

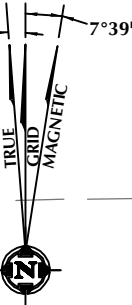
S 89°26'34" W
1321.71' (M)

S 89°25'47" W
1321.63' (M)

NE COR.
SEC. 4, T2N, R65W
FOUND 2 1/2" ALUM. CAP
ILLEGIBLE

MATCH LINE
SEE SHEET 1

NW COR.
SEC. 4, T2N, R65W
FOUND 2 1/2" ALUM. CAP
L.S. NO. 23501



E. 1/16 COR.
SEC. 33, T3N, R65W &
SEC. 4, T2N, R65W
FOUND 2 1/2" ALUM. CAP
P.L.S. NO. 9644

N 00°02'19" E
2511.57' (M)

S 01°01'35" E 10656' GRID
S 00°29'03" E TRUE
S 08°40'35" E MAGNETIC

N 00°00'29" E 2507.56' (M)

CENTER 1/4 COR.
SEC. 4, T2N, R65W
FOUND 3 1/4" ALUM. CAP
L.S. NO. 33642

W. 1/4 COR.
SEC. 4, T2N, R65W
FOUND 3 1/4" ALUM. CAP
L.S. NO. 13155

S 89°20'38" W
2645.58' (M)

S 89°22'15" W
1322.35' (M)

S 89°19'43" W
1322.36' (M)

E. 1/4 COR.
SEC. 4, T2N, R65W
FOUND 3 1/4" ALUM. CAP
L.S. NO. 13155

E. 1/16 COR.
SEC. 4, T2N, R65W
FOUND 2 1/2" ALUM. CAP
P.L.S. NO. 9644

SURFACE LOCATION: NAD 83
GROUND ELEVATION= 4835.1'
LATITUDE= 40.187741°
LONGITUDE= -104.660940°
LATITUDE= 40°11'15.869"
LONGITUDE= -104°39'39.385"
HEEL LOCATION: NAD 83
LATITUDE= 40.188750°
LONGITUDE= -104.665224°
LATITUDE= 40°11'19.501"
LONGITUDE= -104°39'54.807"
BOTTOM HOLE LOCATION: NAD 83
LATITUDE= 40.159499°
LONGITUDE= -104.664900°
LATITUDE= 40°09'34.196"
LONGITUDE= -104°39'53.640"

N 00°02'17" E
2641.65' (M)

N 00°00'40" E 2655.67' (M)

SW COR.
SEC. 4, T2N, R65W
FOUND 3 1/4" ALUM. CAP
L.S. NO. 7242

MATCH LINE
SEE SHEET 3

S 89°39'10" W 2646.01' (M)

S. 1/4 COR.
SEC. 4, T2N, R65W
FOUND 3 1/4" ALUM. CAP
L.S. NO. 13155

S 89°39'13" W 2645.83' (M)

SE COR.
SEC. 4, T2N, R65W
FOUND 3 1/4" ALUM. CAP
L.S. NO. 13155

WELL BORE CONTINUES
INTO SECTION 9

CERTIFICATE OF SURVEYOR:

THIS IS TO CERTIFY THAT THE ABOVE PLAT WAS PREPARED FROM FIELD NOTES OF ACTUAL SURVEY MADE BY ME OR UNDER MY SUPERVISION AND THAT THE SAME ARE TRUE AND CORRECT TO THE BEST OF MY KNOWLEDGE AND BELIEF. THIS CERTIFICATE DOES NOT REPRESENT A LAND SURVEY PLAT OR IMPROVEMENT SURVEY PLAT AS DEFINED BY C.R.S. 38-51-102 AND CANNOT BE RELIED UPON TO DETERMINE OWNERSHIP.

Randall K. French
PROFESSIONAL LAND SURVEYOR
38512
12/1/16
COLORADO REGISTRATION NUMBER 38512

NOTICE:
ACCORDING TO COLORADO STATE LAW YOU MUST COMMENCE ANY LEGAL ACTION BASED UPON ANY DEFECT IN THIS SURVEY WITHIN THREE YEARS AFTER YOU FIRST DISCOVER SUCH DEFECT. IN NO EVENT MAY ANY ACTION BASED UPON ANY DEFECT IN THIS SURVEY BE COMMENCED MORE THAN TEN YEARS FROM THE DATE ON THE CERTIFICATION SHOWN HEREON.

NOTES:

- ▲ INDICATES SECTION CORNER
- INDICATES CALCULATED CORNER
- ELEVATION BASED ON NAVD88 (GEOID12B)
- BASIS OF BEARING DERIVED FROM COLORADO COORDINATE SYSTEM OF 1983 NORTH ZONE.
- ALL MEASURED DISTANCES ARE GRID.
- COMBINED SCALE FACTOR: .99972912 CALCULATED FROM THE N. 1/4 CORNER OF SECTION 33, T3N, R65W
- OPERATOR: ROB WILSON / PDOP = 1.3
- SEE ADDENDUM TO WELL LOCATION CERTIFICATE FOR EXISTING IMPROVEMENTS WITHIN 500' OF THE WELL PAD.
- WELL FOOTAGES ARE MEASURED AT RIGHT ANGLES TO THE SECTION LINES.
- THE BOTTOM OF HOLE BEARS S01°01'35"E, 10656' FROM THE HEEL LOCATION.



NOTE:
MAGNETIC NORTH IS CURRENT AS OF 11/15/2016.
MAGNETIC NORTH CHANGES WEST 0°06' PER YEAR.

WELL PAD - CANNON 27C-9HZ

CANNON 28N-9HZ
LOCATION CERTIFICATE
520' FNL & 492' FEL NENE (SURFACE)
152' FNL & 1688' FEL NWNE (HEEL)
LOCATED IN SECTION 33
T3N, R65W, 6TH P.M.
366' FNL & 1554' FEL NWNE (BOTTOM)
LOCATED IN SECTION 9
T2N, R65W, 6TH P.M.
WELD COUNTY, COLORADO

**Kerr-McGee Oil &
Gas Onshore L.P.**
1099 18th Street
Denver, Colorado 80202



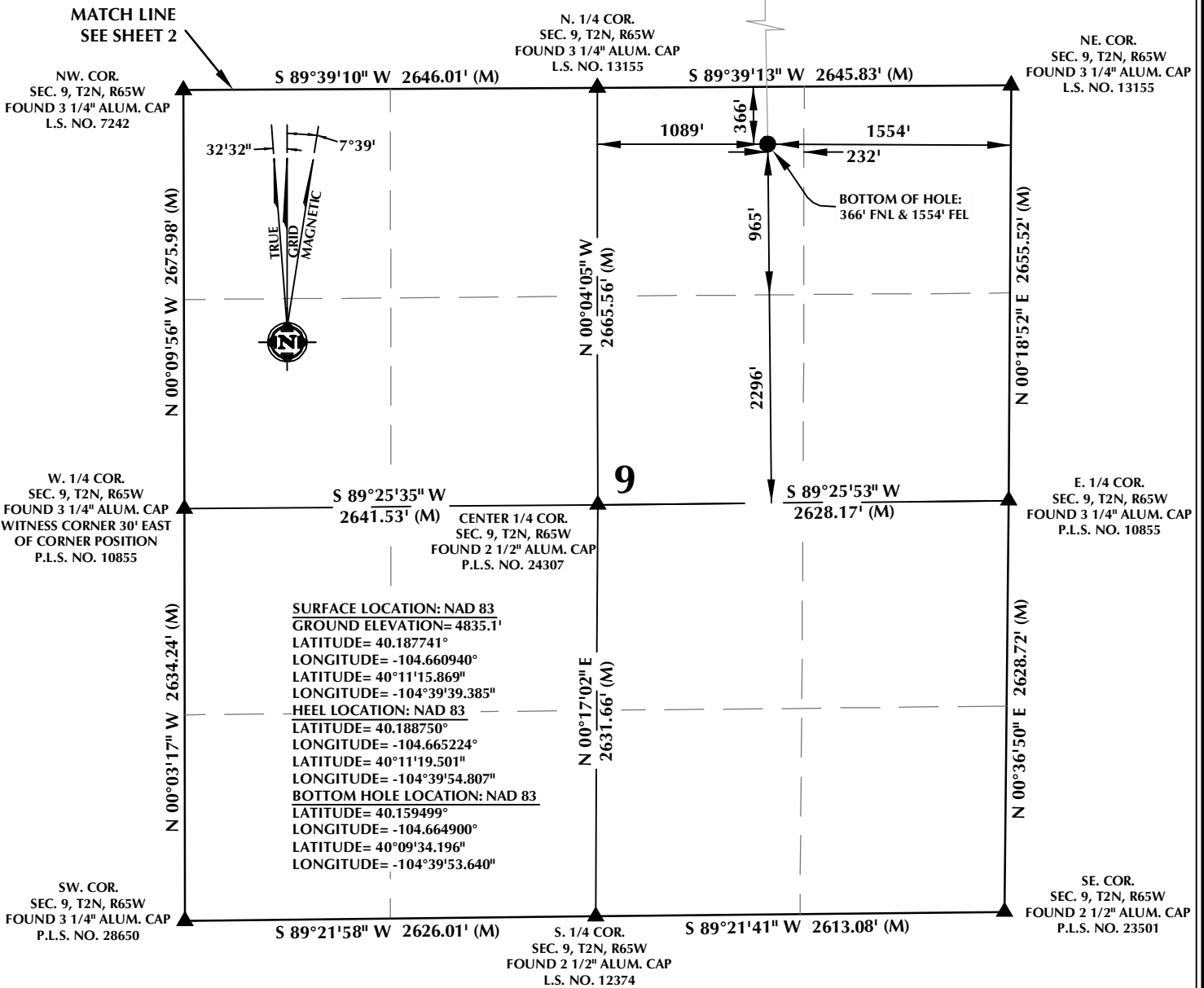
CONSULTING, LLC

SHERIDAN OFFICE
1095 Saberton Avenue
Sheridan, Wyoming 82801
Phone 307-674-0609

LOVELAND OFFICE
1635 Foxtrail Drive, Suite 204
Loveland, Colorado 80538
Phone 970-776-4331

DRAFTED BY:	LMO	CHECKED BY:	RKF	SHEET NO:
DATE DRAFTED:	12/1/16	DATE SURVEYED:	9/15/16	2
REVISED:		FILE NAME:	16-75	2 OF 3

T2N, R65W

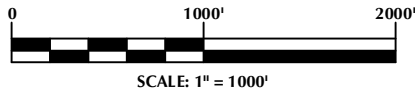


CERTIFICATE OF SURVEYOR:

THIS IS TO CERTIFY THAT THE ABOVE PLAT WAS PREPARED FROM FIELD NOTES OF ACTUAL SURVEY MADE BY ME OR UNDER MY SUPERVISION AND THAT THE SAME ARE TRUE AND CORRECT TO THE BEST OF MY KNOWLEDGE AND BELIEF. THIS CERTIFICATE DOES NOT REPRESENT A LAND SURVEY, PLAT OR IMPROVEMENT SURVEY PLAT AS DEFINED BY C.R.S. 38-51-102 AND CANNOT BE RELIED UPON TO DETERMINE OWNERSHIP.

Randall K. French
RANDALL K. FRENCH
 PROFESSIONAL LAND SURVEYOR
 COLORADO REGISTRATION NUMBER 38512
 12/1/16

NOTICE:
 ACCORDING TO COLORADO STATE LAW YOU MUST COMMENCE ANY LEGAL ACTION BASED UPON ANY DEFECT IN THIS SURVEY WITHIN THREE YEARS AFTER YOU FIRST DISCOVER SUCH DEFECT. IN NO EVENT MAY ANY ACTION BASED UPON ANY DEFECT IN THIS SURVEY BE COMMENCED MORE THAN TEN YEARS FROM THE DATE ON THE CERTIFICATION SHOWN HEREON.



NOTE:
 MAGNETIC NORTH IS CURRENT AS OF 11/15/2016.
 MAGNETIC NORTH CHANGES WEST 0°06' PER YEAR.

NOTES:

- ▲ INDICATES SECTION CORNER
- INDICATES CALCULATED CORNER
- ELEVATION BASED ON NAVD88 (GEOID12B)
- BASIS OF BEARING DERIVED FROM COLORADO COORDINATE SYSTEM OF 1983 NORTH ZONE.
- ALL MEASURED DISTANCES ARE GRID.
- COMBINED SCALE FACTOR: .99972912 CALCULATED FROM THE N. 1/4 CORNER OF SECTION 33, T3N, R65W
- OPERATOR: ROB WILSON / PDOP = 1.3
- SEE ADDENDUM TO WELL LOCATION CERTIFICATE FOR EXISTING IMPROVEMENTS WITHIN 500' OF THE WELL PAD.
- WELL FOOTAGES ARE MEASURED AT RIGHT ANGLES TO THE SECTION LINES.
- THE BOTTOM OF HOLE BEARS S01°01'35"E, 10656' FROM THE HEEL LOCATION.

WELL PAD - CANNON 27C-9HZ

CANNON 28N-9HZ
LOCATION CERTIFICATE
 520' FNL & 492' FEL NENE (SURFACE)
 152' FNL & 1688' FEL NWNE (HEEL)
 LOCATED IN SECTION 33
 T3N, R65W, 6TH P.M.
 366' FNL & 1554' FEL NWNE (BOTTOM)
 LOCATED IN SECTION 9
 T2N, R65W, 6TH P.M.
 WELD COUNTY, COLORADO

**Kerr-McGee Oil &
 Gas Onshore L.P.**
 1099 18th Street
 Denver, Colorado 80202



CONSULTING, LLC

SHERIDAN OFFICE
 1095 Saberton Avenue
 Sheridan, Wyoming 82801
 Phone 307-674-0609

LOVELAND OFFICE
 1635 Foxtrail Drive, Suite 204
 Loveland, Colorado 80538
 Phone 970-776-4331

DRAFTED BY:	LMO	CHECKED BY:	RKF	SHEET NO:
DATE DRAFTED:	12/1/16	DATE SURVEYED:	9/15/16	3
REVISED:		FILE NAME:	16-75	3 OF 3