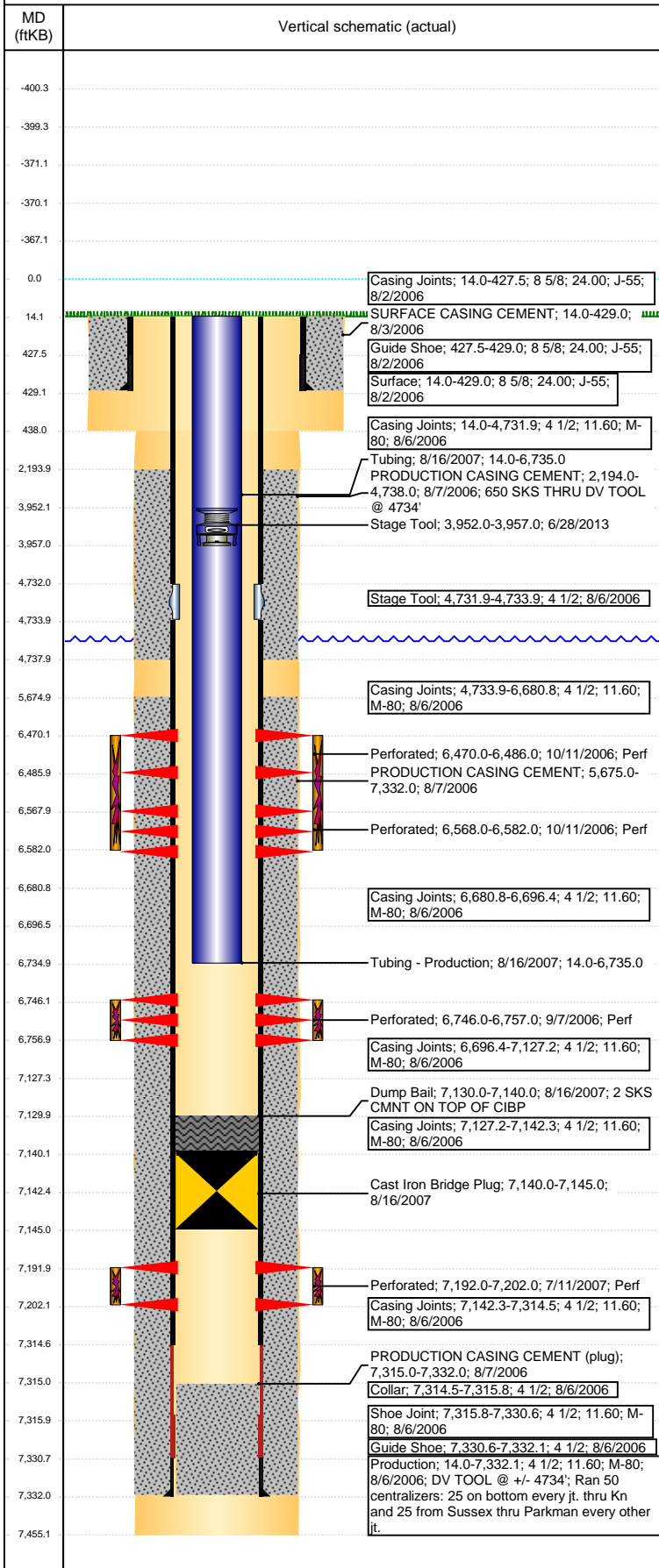


**Well Name: 70 RANCH 31-09**

VERTICAL - ORIGINAL HOLE, 3/16/2017 11:11:51 AM



## Well Header

API 05-123-29960	Business Unit DJ BASIN	District 15	Well Config VERTICAL
Original KB Elevation (ft) 4,736	KB - GL / MSL (ftKB) 14.00	Spud Date 8/2/2006	P & A Date

Comment  
DV TOOL @ +/- 4734'; PUSHED FP TO 6888'

Directions To Well

## Congressional Location

Quarter 3 NW	Quarter 4 NE	Section 9	Township 5	Twnshp N/S Dir N	Range 63	Range E/W Dir W
-----------------	-----------------	--------------	---------------	---------------------	-------------	--------------------

## Bottom Hole Location

North-South Distance (ft)	From N or S Line	East-West Distance (ft)	From E or W Line
---------------------------	------------------	-------------------------	------------------

## Plug Back Total Depths

Date	Depth (ftKB)	Method	Com
8/7/2006	7,315.0	CASING TALLY	PBTD ON CSG CMLPTN RPT
8/16/2007	7,140.0		W/ 2SKS CEMENT ON TOP

## Wellbore Sections

Section Des	Size (in)	Act Top, MD (ftKB)	Act Btm, MD (ftKB)
SURFACE	12 1/4	14	438
PRODUCTION	7 7/8	438	7,455

## Zone Statuses

Zone Name	Status Date	Status	Fluid Type	Job	Prod Method
J SAND	8/16/2007	AB	Water	RECOMPLETI...	Flowing
CODELL	10/13/2006	PR		DRILLING/CO...	
CODELL	2/4/2010	PR		DRILLING/CO...	
NIOBRARA	10/13/2006	PR	Water	DRILLING/CO...	Flowing
NIOBRARA	2/4/2010	PR			
NIOBRARA	10/25/2016	PR			
NIOBRARA	10/27/2016	SI			

## Casing Strings

### Surface, 429.0ftKB

Casing Description	Run Date	OD (in)	Wt/Len (l...)	Grade	Top, MD (ft...)	MD (ftKB)
Surface	8/2/2006	8 5/8	24.00	J-55	14.0	429.0

### Production, 7,332.1ftKB

Casing Description	Run Date	OD (in)	Wt/Len (l...)	Grade	Top, MD (ft...)	MD (ftKB)
Production	8/6/2006	4 1/2	11.60	M-80	14.0	7,332.1

## Cement

Description	Top Depth (ftKB)	Bottom Depth (ftKB)
SURFACE CASING CEMENT	14.0	429.0
PRODUCTION CASING CEMENT	2,194.0	4,738.0
PRODUCTION CASING CEMENT	5,675.0	7,332.0
Dump Bail	7,130.0	7,140.0

## Tubing Strings

Tubing Description	Run Date	String...	ID (in)	Wt (lb/ft)	Grade	Len (ft)	Set De...
Tubing - Production	8/16/2007	2 3/8	2.00	4.70	J-55	6,721.00	

## Tubing Components

Item Des	OD (in)	Wt (lb/ft)	Grade	Jts	Len (ft)	Btm (ftKB)	Btm (TVD) (ftKB)
Tubing	2 3/8	4.70	J-55	205	6,721.00	6,735.0	

## Other In Hole

Run Date	Des	OD (in)	Top (ftKB)	Btm (ftKB)
8/16/2007	Cast Iron Bridge Plug	4	7,140.0	7,145.0
6/28/2013	Stage Tool	2	3,952.0	3,957.0

## Logs

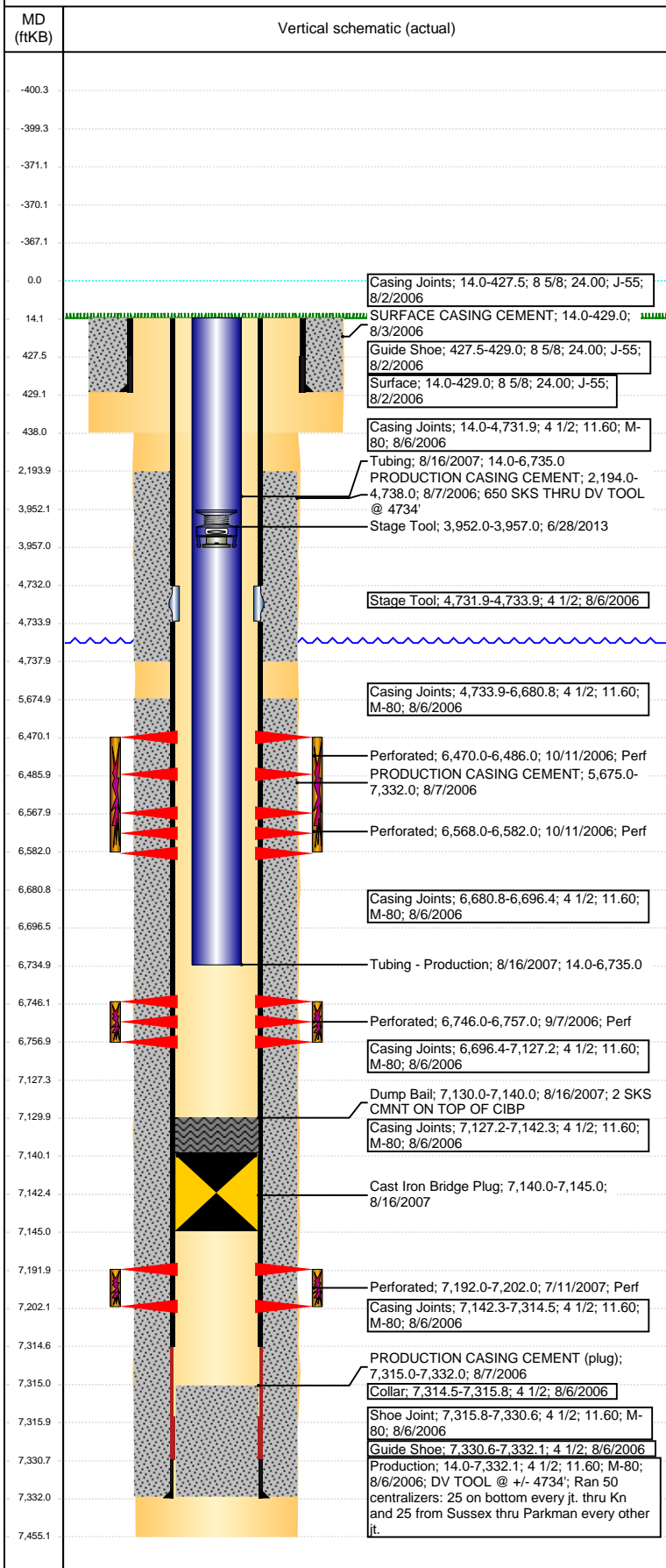
Date	Type	Top, MD (ftKB)	Btm, MD (ftKB)
7/14/2015	GYRO	14.0	6,700.0

## Perforation Data

Linked Zone	Bnch/St g	Sum of Entered Shot Total	Top (ftKB)	Btm (ftKB)	Date
NIOBRARA, ORIGINAL HOLE		96	6,470.00	6,486.00	10/11/2006
NIOBRARA, ORIGINAL HOLE		84	6,568.00	6,582.00	10/11/2006
CODELL, ORIGINAL HOLE		44	6,746.00	6,757.00	9/7/2006

**Well Name: 70 RANCH 31-09**

VERTICAL - ORIGINAL HOLE, 3/16/2017 11:11:54 AM



Perforation Data					
Linked Zone	Bnch/St g	Sum of Entered Shot Total	Top (ftKB)	Btm (ftKB)	Date
J SAND, ORIGINAL HOLE		40	7,192.00	7,202.00	7/11/2007
Total (Sum)		264			
Stimulation Intervals					
Start Date 10/11/2006		Primary Job Type DRILLING/COMPLETION - ORIGINAL			
Technical Result		Tech Result Details		Tech Result Note	
Comment					
Start Date 7/18/2007		Primary Job Type RECOMPLETION			
Technical Result		Tech Result Details		Tech Result Note	
Comment (30% N2 assist)					
Start Date 10/11/2006		Primary Job Type DRILLING/COMPLETION - ORIGINAL			
Technical Result		Tech Result Details		Tech Result Note	
Comment					