

NOBLE ENERGY INC.
 UPV 05-05H3
 SNNW 5-5N-63W
 1987 FNL & 655 FWL
 WELD COUNTY, CO
 Wattenberg
CURRENT WELLBORE SCHEMATIC
 with PROPOSED P&A
 2/7/2017

API: 05-123-18860

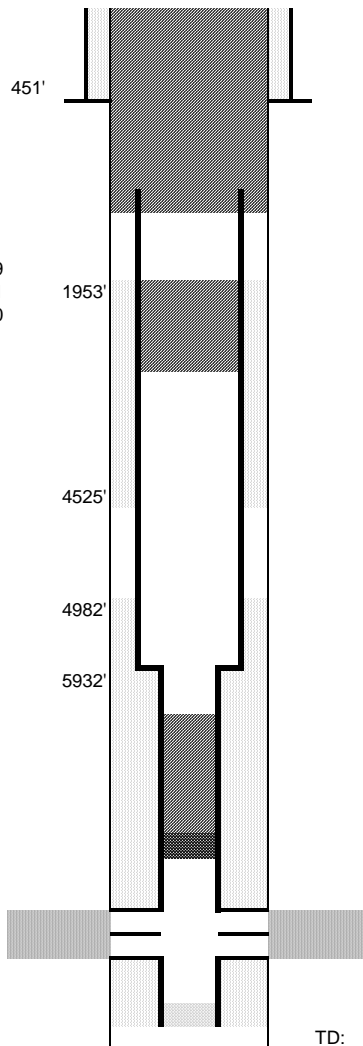
KB Elev: 4687'
 GL Elev: 4676'

Spud Date: 1/30/1995

Surface Casing :
 7", 17#, H-40 @ 451'
 Cement: 200 sx
 TOC: Surface

WW	59	259
SC	451	651
FH	360	560

Production Casing :
 3 1/2", 7.7#, N-80 @ 6924'
 Cement: 185 sx
 TD: 6924'



Cut surface casing off 6'-8' below surface.

Pump 190 sx shoe plug from 651' to surface.
 Cut csg @ 651'

Pump 22 sx balance plug from 2450' to 1953' for courtesy plug.

Pump 12 sx cement from 6714' (CIBP) to 6276' for Niobrara coverage.
 CIBP @ 6714'

Codell Perforations: 6764' - 6784'

TD: 6924'