

# HALLIBURTON

iCem<sup>®</sup> Service

## **TERRA ENERGY PARTNERS**

**For: Abe Alexander and Lynn Cass**

Date: Sunday, December 25, 2016

**RU 424-7 Surface**

**API#05-045-23258-00**

Sincerely,

**Grand Junction Cement Engineering**

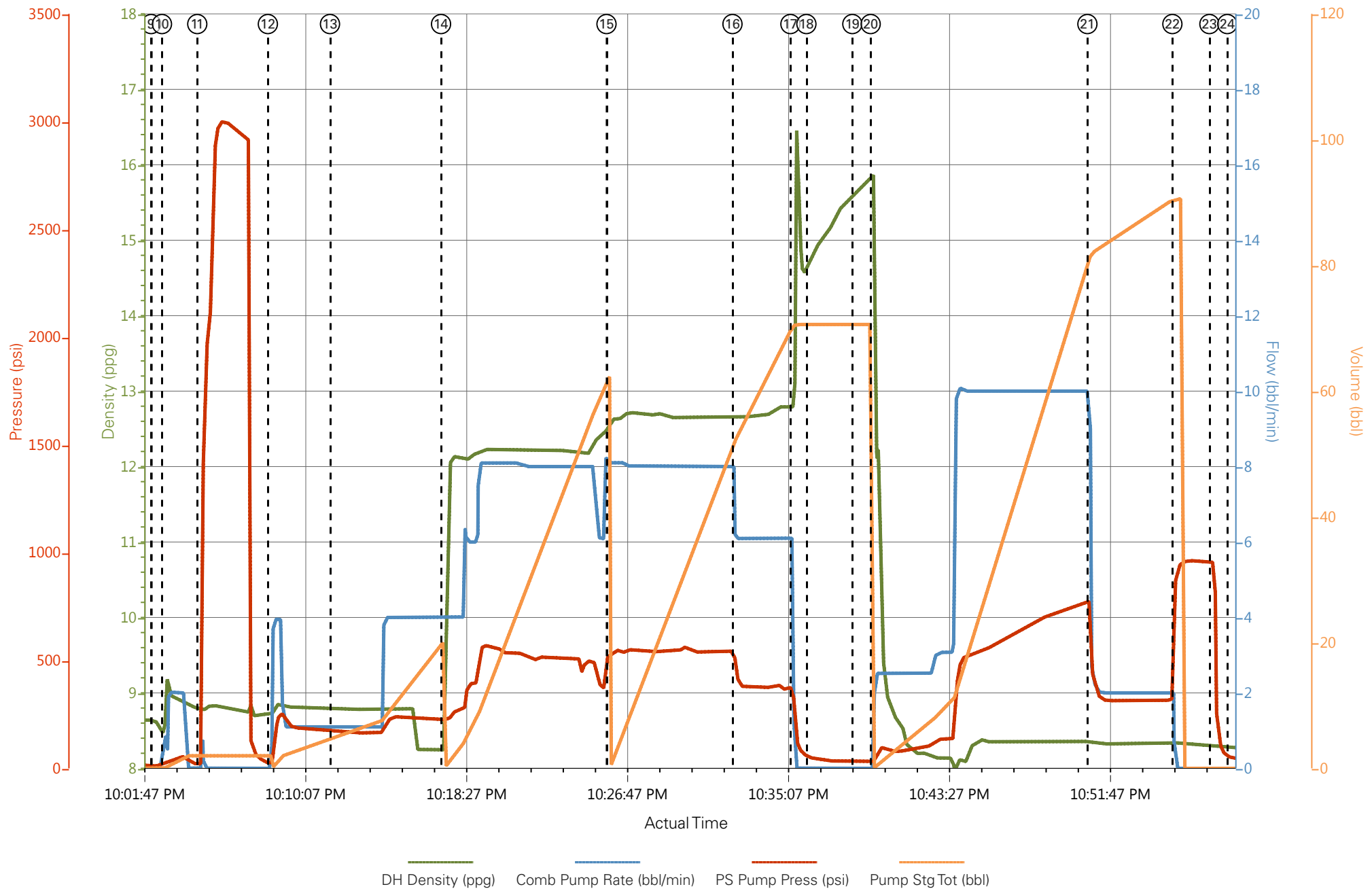
## 1.0 Real-Time Job Summary

## 1.1 Job Event Log

Type	Seq. No.	Graph Label	Date	Time	Source	DH Density (ppg)	Comb Pump Rate (bbl/min)	PS Pump Press (psi)	Pump Stg Tot (bbl)	Comments
Event	1	Call Out	12/25/2016	13:00:00	USER					REQUESTED ON LOCATION AT 18:00 12/25/16
Event	2	Pre-Convoy Safety Meeting	12/25/2016	14:45:00	USER					ROLLED FROM ANOTHER JOB TO THIS ONE. PUMP STAYED IN THE FIELD
Event	3	Crew Leave Yard	12/25/2016	15:00:00	USER					1 - 550 PU, 1 - 660 BULK TRUCK
Event	4	Arrive At Loc	12/25/2016	17:00:00	USER					ARRIVED AN HOUR EARLY AND RIG CREW WAS JUST COMING OUT OF THE HOLE
Event	5	Assessment Of Location Safety Meeting	12/25/2016	17:15:00	USER					DID A WAKL AROUND OF LOCATION AND MET WITH CO REP TO GO OVER NUMBERS AND JOB PROCEDURE. CUSTOMER RECEIVED/OFFERED SDS. COLLECTED WATER SAMPLE (PH-7, CHL-0, TEMP 88F)
Event	6	Pre-Rig Up Safety Meeting	12/25/2016	17:30:00	USER					FILLED OUT JSA AND SPOTTED TRUCKS IN
Event	7	Rig-Up Equipment	12/25/2016	17:45:00	USER					RIGGED UP LINES BEFORE CASING CREW RIGGED UP SO WE WERE OUT OF THE RED ZONE WHEN THEY STARTED. CASING CREW FINISHED AT 21:00
Event	8	Pre-Job Safety Meeting	12/25/2016	21:30:00	USER					MET WITH RIG CREW TO GO OVER JOB. ALL HES PRESENT
Event	9	Start Job	12/25/2016	22:02:17	COM5					TD 1156', TP 1146', FC 1106', OH 13.5", CSG 9.625" 32.3# H-40, MW 8.9 PPG, TOT 427', FINAL CIRCULATING RATE AND PRESSURE - 240 GPM, 0 PSI
Event	10	Prime Pumps	12/25/2016	22:02:51	COM5	8.33	2	50	2	2 BBLS FRESH WATER
Event	11	Test Lines	12/25/2016	22:04:40	COM5			3000		TESTED TO 3000 PSI. TESTED GOOD. KO'S FUNCTIONING
Event	12	Pump Spacer 1	12/25/2016	22:08:20	COM5	8.33	4	250	20	20 BBLS FRESH WATER
Event	13	Check weight	12/25/2016	22:11:33	COM5	12.3				12.3 PPG
Event	14	Pump Lead Cement	12/25/2016	22:17:18	COM5	12.3	8	560	55.1	130 SKS VariCem (55.1 BBLS) 12.3 PPG, 2.38 FT3/SK, 13.77 GAL/SK

Event	15	Pump Tail Cement	12/25/2016	22:25:52	COM5	12.8	8	550	65.8	175 SKS VariCem (65.8 BBLS) 12.8 PPG, 2.11 FT3/SK, 11.78 GAL/SK
Event	16	Slow Rate	12/25/2016	22:32:23	USER	12.8	6	360		SLOWED TO 6 BBLS/MIN TO END CEMENT
Event	17	Shutdown	12/25/2016	22:35:23	USER					END OF CEMENT
Event	18	Drop Top Plug	12/25/2016	22:36:13	COM5					PLUG WENT WITNESSED BY CO REP
Event	19	Wash On Top	12/25/2016	22:38:35	USER	8.33	4	290	10	10 BBLS FRESH WATER
Event	20	Pump Displacement	12/25/2016	22:39:32	COM5	8.33	10	760	87	87 BBLS FRESH WATER
Event	21	Slow Rate	12/25/2016	22:50:46	COM5	8.33	2	320	77	SLOWED TO 2 BBLS/MIN TO LAND PLUG
Event	22	Bump Plug	12/25/2016	22:55:10	COM5	8.33	2	320	87	LANDED AT 320 PSI AND WENT TO 950 PSI
Event	23	Check Floats	12/25/2016	22:57:05	COM5			950		FLOATS HELD. .5 BBLS BACK TO TRUCK
Event	24	End Job	12/25/2016	22:58:00	COM5					GREAT RETURNS THROUGHOUT JOB. 21 BBLS OF GOOD CEMENT TO SURFACE
Event	25	Pre-Rig Down Safety Meeting	12/25/2016	23:00:00	USER					ALL HES PRESENT
Event	26	Rig Down Lines	12/25/2016	23:10:00	USER					
Event	27	Pre-Convoy Safety Meeting	12/26/2016	00:00:00	USER					ALL HES PRESENT
Event	28	Crew Leave Location	12/26/2016	00:15:00	USER					THANK YOU FOR USING HALLIBURTON CEMENT. CLIFF SPARKS AND CREW

# TERRA YOUNBERG RU 424-7 9.625" PRODUCTION



⑨ Start Job ⑩ Prime Pumps ⑪ Test Lines ⑫ Pump Spacer 1 ⑬ Check weight ⑭ Pump Lead Cement ⑮ Pump Tail Cement ⑯ Slow Rate ⑰ Shutdown ⑱ Drop Top Plug ⑲ Wash On Top

▼ **HALLIBURTON** | iCem® Service

Created: 2016-12-25 18:23:05, Version: 4.2.393

Edit

Customer: TERRA ENERGY PARTNERS

Job Date: 12/25/2016 8:37:28 PM

Well: RU 424-7

Representative: BRANDON HAIRE

Sales Order #: 903738787

ELITE - 4: CLIFF SPARKS / DAVID CAMPBELL

# TERRA YOUNBERG RU 424-7 9.625" PRODUCTION

