



3/10/2017. View SW – oily soil stockpiled west of wellhead.





3/10/2017. Oily soil in stockpile immediately west of wellhead.





3/10/2017. Residual oil on the ground surface in the spill area.



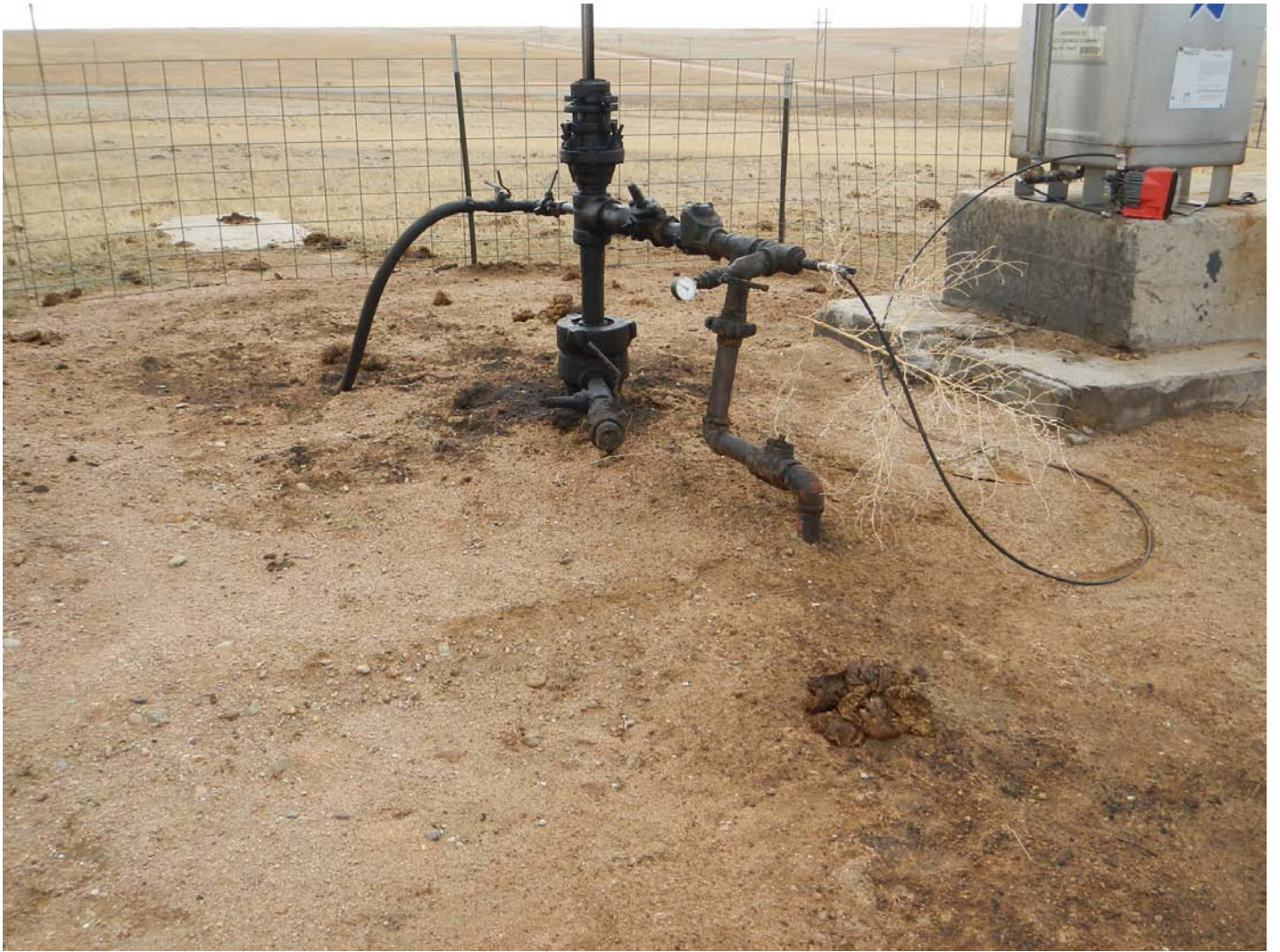


3/10/2017. Residual oil on the surface in the spill area.





3/10/2017. View east, uphill toward Wright #1 wellhead including residual oil and heavy equipment track and scrape marks.



3/10/2017. Wright #1 wellhead, oil on the ground.





3/10/2017. Wright #1 wellhead and oily soil stockpile, view southwest.