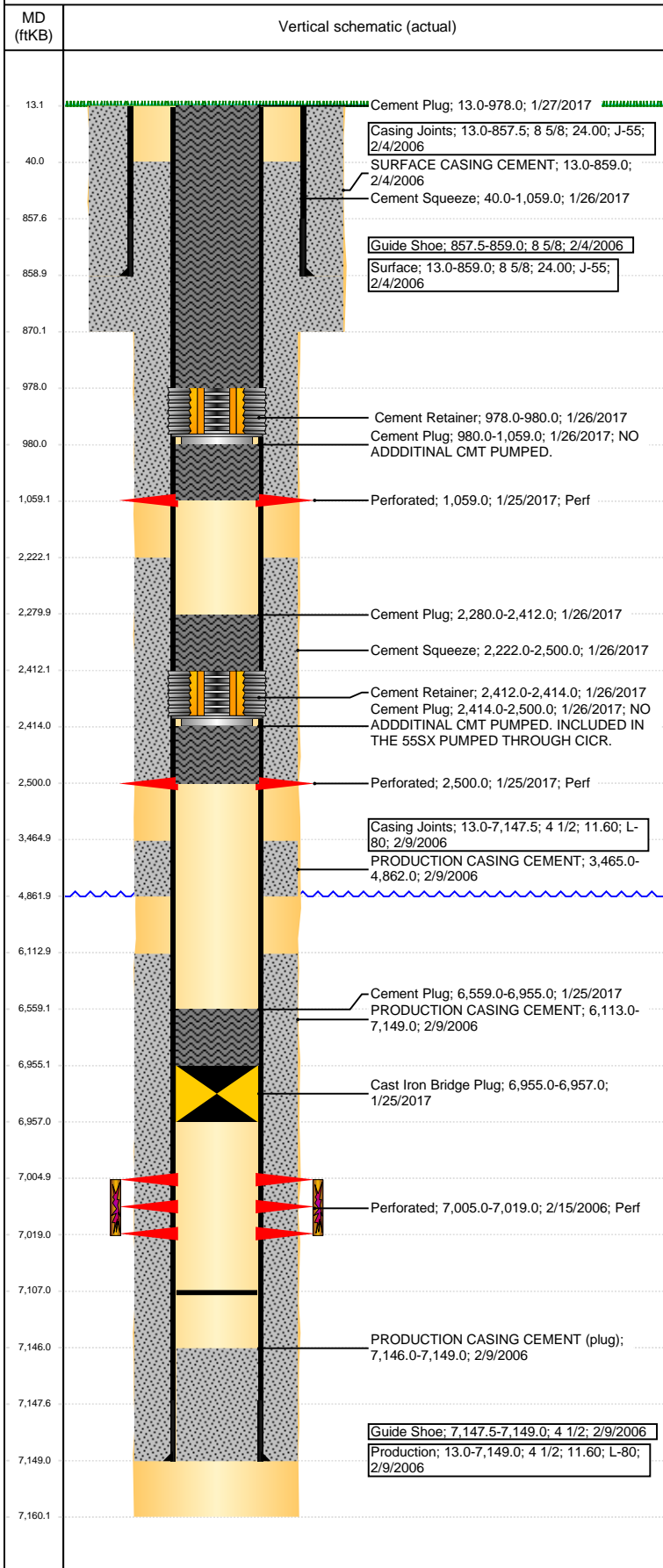


Well Name: KERBS 12-15

VERTICAL - ORIGINAL HOLE, 3/15/2017 2:44:31 PM



Well Header

API 05-123-23537	Business Unit DJ BASIN	District 15	Well Config VERTICAL
Original KB Elevation (ft) 4,825	KB - GL / MSL (ftKB) 13.00	Spud Date 2/3/2006	P & A Date

Comment

Directions To Well

68 & 55, N 1/2, E ON SOUTH SIDE OF BATT 1/10, N 1/10 INTO

Congressional Location

Quarter 3 SW	Quarter 4 NW	Section 15	Township 6	Twnshp N/S Dir N	Range 64	Range E/W Dir W
-----------------	-----------------	---------------	---------------	---------------------	-------------	--------------------

Bottom Hole Location

North-South Distance (ft)	From N or S Line	East-West Distance (ft)	From E or W Line
---------------------------	------------------	-------------------------	------------------

Plug Back Total Depths

Date	Depth (ftKB)	Method	Com
2/9/2006	7,146.0	CASING TALLY	ORIGINAL PBD, GUIDE SHOE
2/13/2006	7,107.0	CASED HOLE LOG	DEPTH LOGGER

Wellbore Sections

Section Des	Size (in)	Act Top, MD (ftKB)	Act Btm, MD (ftKB)
SURFACE	12 1/4	13	870
PRODUCTION	7 7/8	870	7,160

Zone Statuses

Zone Name	Status Date	Status	Fluid Type	Job	Prod Method
CODELL	2/20/2006	PR	Oil	DRILLING/CO...	
CODELL	7/26/2010	PR	Water		Flowing
CODELL	1/25/2017	P&A	Oil	PLUG AND AB...	
NIORARA	7/26/2010	PR	Water		Flowing

Casing Strings

Surface, 859.0ftKB

Casing Description	Run Date	OD (in)	W/Len (l...)	Grade	Top, MD (ft...)	MD (ftKB)
Surface	2/4/2006	8 5/8	24.00	J-55	13.0	859.0

Production, 7,149.0ftKB

Casing Description	Run Date	OD (in)	W/Len (l...)	Grade	Top, MD (ft...)	MD (ftKB)
Production	2/9/2006	4 1/2	11.60	L-80	13.0	7,149.0

Cement

Description	Top Depth (ftKB)	Bottom Depth (ftKB)
SURFACE CASING CEMENT	13.0	859.0
PRODUCTION CASING CEMENT	3,465.0	4,862.0
PRODUCTION CASING CEMENT	6,113.0	7,149.0
Cement Plug	6,559.0	6,955.0
Cement Plug	2,414.0	2,500.0
Cement Squeeze	2,222.0	2,500.0
Cement Plug	2,280.0	2,412.0
Cement Squeeze	40.0	1,059.0
Cement Plug	980.0	1,059.0
Cement Plug	13.0	978.0

Tubing Strings

Tubing Description	Run Date	String...	ID (in)	Wt (lb/ft)	Grade	Len (ft)	Set De...
Tubing - Production	10/27/2006	2 3/8	2.00	4.70	J-55	7,060.00	

Other In Hole

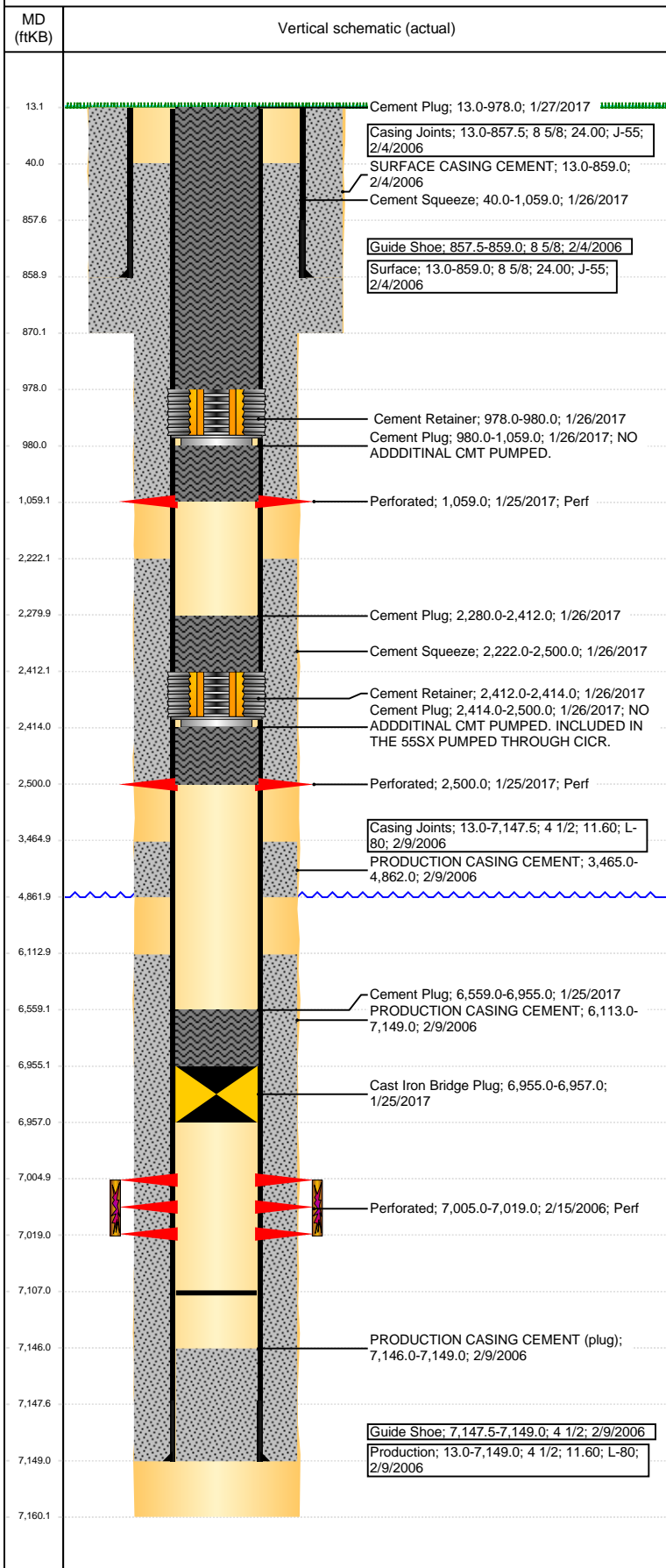
Run Date	Des	OD (in)	Top (ftKB)	Btm (ftKB)
1/25/2017	Cast Iron Bridge Plug	3.99	6,955.0	6,957.0
1/26/2017	Cement Retainer	3.99	2,412.0	2,414.0
1/26/2017	Cement Retainer	3.99	978.0	980.0

Logs

Date	Type	Top, MD (ftKB)	Btm, MD (ftKB)
2/8/2006	COMPENSATED DENSITY	860.0	7,160.0
2/13/2008	CBL/CCL/GR	2,900.0	7,107.0
3/31/2015	GYRO	13.0	7,000.0

Well Name: KERBS 12-15

VERTICAL - ORIGINAL HOLE, 3/15/2017 2:44:33 PM



Logs					
Date		Type		Top, MD (ftKB)	Btm, MD (ftKB)
1/27/2017		RADIAL CEMENT		13.0	970.0
Perforation Data					
Linked Zone	Bnch/St g	Sum of Entered Shot Total	Top (ftKB)	Btm (ftKB)	Date
CODELL, ORIGINAL HOLE	01	4	1,059.00	1,059.00	1/25/2017
	01	4	2,500.00	2,500.00	1/25/2017
		56	7,005.00	7,019.00	2/15/2006
Total (Sum)		64			
Stimulation Intervals					
Start Date 2/15/2006		Primary Job Type DRILLING/COMPLETION - ORIGINAL			
Technical Result		Tech Result Details		Tech Result Note	
Comment					