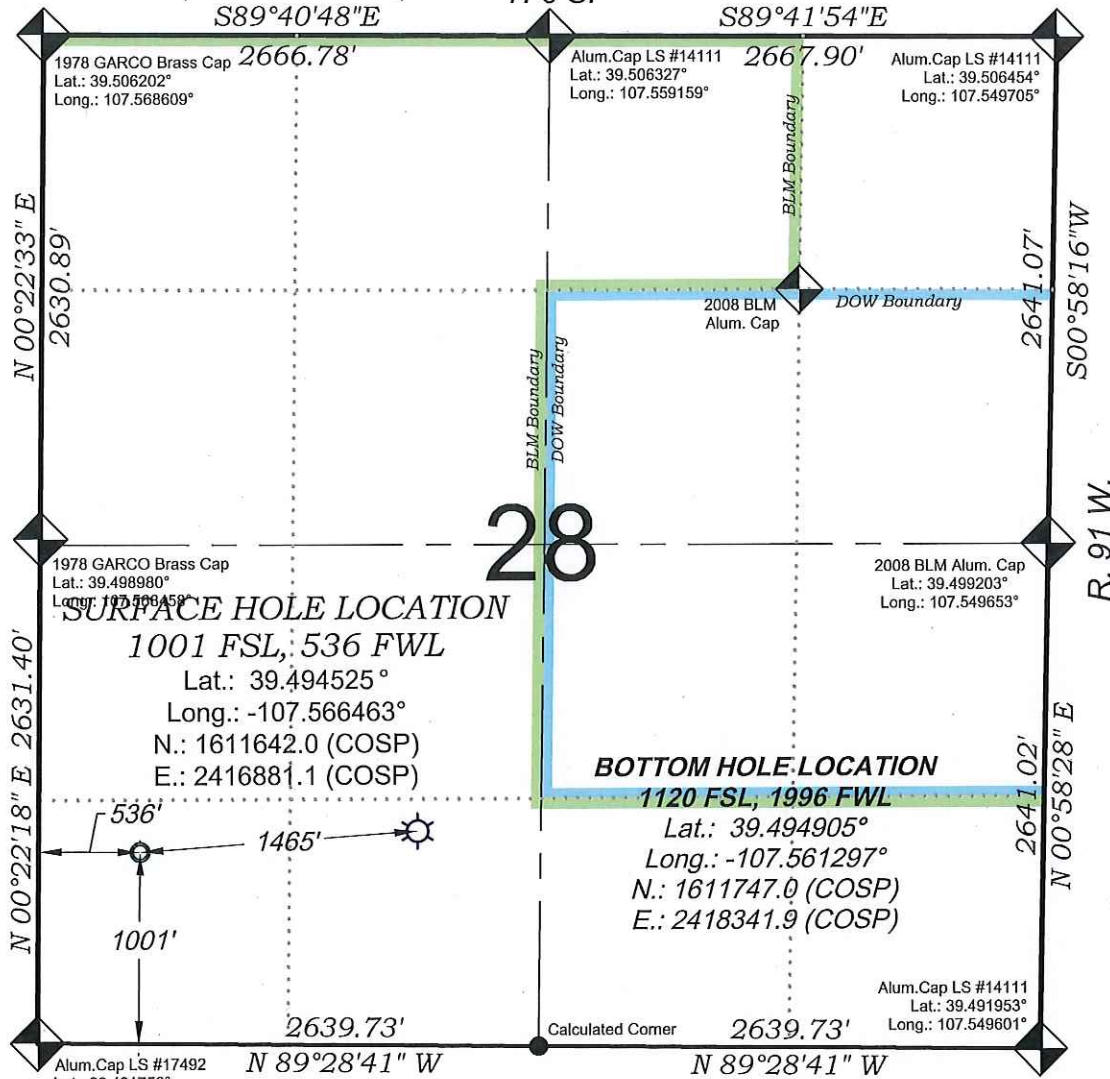


Federal GGU 24D-28-691

(BASIS OF BEARING)

T. 6 S.

S89°41'54"E



SURFACE HOLE LOCATION

1001 FSL, 536 FWL

Lat.: 39.494525°

Long.: -107.566463°

N.: 1611642.0 (COSP)

E.: 2416881.1 (COSP)

BOTTOM HOLE LOCATION

1120 FSL, 1996 FWL

Lat.: 39.494905°

Long.: -107.561297°

N.: 1611747.0 (COSP)

E.: 2418341.9 (COSP)

SEE CONSTRUCTION LAYOUT PLAT
FOR VISIBLE IMPROVEMENTS
WITHIN 500' OF THIS LOCATION

EXISTING GROUND ELEV.: 6129.9
PROPOSED PAD ELEV.: 6130.6

- LEGEND -

FIELD LOCATED SECTION
MONUMENTS AS DESCRIBED

FIELD SURVEYED
WELL LOCATION

CALCULATED BOTTOM
HOLE LOCATION

CALCULATED SECTION
CORNER LOCATION

SURVEYORS STATEMENT

I, MICHAEL J. LANGHORNE, A REGISTERED LAND SURVEYOR IN THE STATE OF COLORADO DO HEREBY CERTIFY THAT THE SURVEY SHOWN HEREON WAS PREPARED UNDER MY DIRECT SUPERVISION AND HAS BEEN STAKED ON THE GROUND AS SHOWN ON THE PLAT AND CHECKING THAT THIS MAP IS A TRUE REPRESENTATION THEREOF.

MICHAEL J. LANGHORNE, COLORADO REGISTRATION NO. 36572
FOR AND ON BEHALF OF
BOOKCLIFF SURVEY SERVICES, INC.

REFERENCES

- 1) Corrective Dependent Resurvey T. 6 S., R. 91 W., 6th P.M (BLM PLAT)
- 2) U.S.G.S. QUAD: Gibson Gulch, CO

136 East Third Street
Rifle, Colorado
81650 Ph. (970)
625-2720 Fax (970)
625-2773



BOOKCLIFF
Survey Services, Inc.

SURVEY DATE: 11/15/16
MAP DATE: 11/23/16
SCALE: 1" = 1000'
PLAT: 1 of 10
PROJECT: Vanguard

NOTES

- 1) ELEVATIONS BASED ON N.A.V.D. 1988 PUBLISHED COORDINATES.
- 2) LATITUDES AND LONGITUDES ARE BASE ON NAD 83, PUBLISHED COORDINATES
- 3) STATE PLANE COORDINATES ARE BASED ON COLORADO CENTRAL ZONE, U.S. SURVEY FEET.
- 4) ELEVATION MASK SET TO 15"
- 5) GPS OPERATOR J. KIRKPATRICK, OBSERVED A PDOP 1.8 ON SURVEY POINT NUMBER 251.
- 6) SURFACE AND BOTTOM HOLE LOCATIONS ARE MEASURED 90° FROM SECTION LINES.

WELL LOCATION PLAT Prepared for:



VANGUARD
OPERATING, LLC

Vanguard Operating, LLC

SW1/4 SW1/4, SECTION 28
T. 6 S., R. 91 W. of the 6th. P.M.
GARFIELD COUNTY, COLORADO