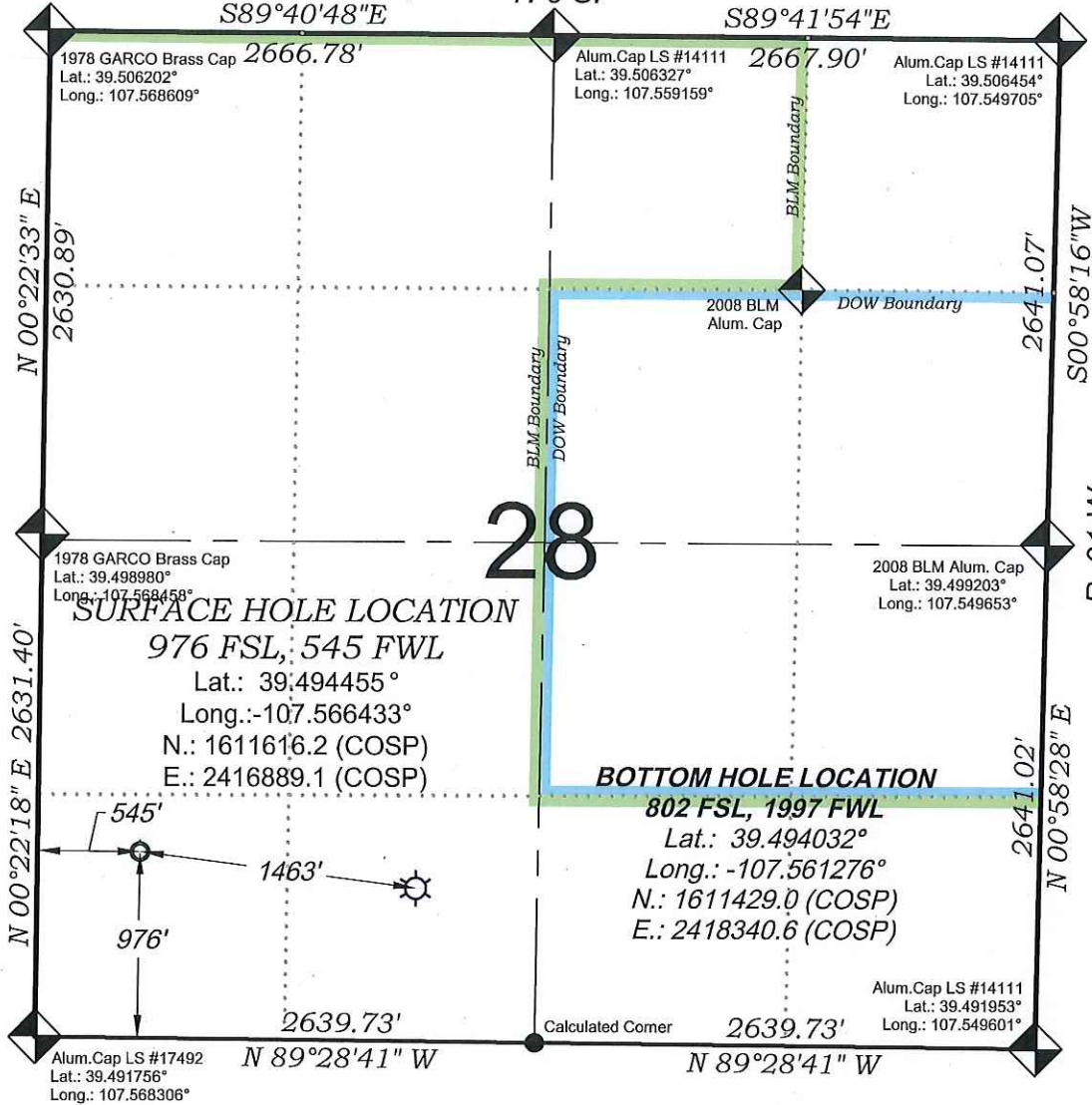


Federal GGU 24C-28-691

(BASIS OF BEARING)
S89°40'48"E

T. 6 S.

S89°41'54"E



SURFACE HOLE LOCATION
976 FSL, 545 FWL
Lat.: 39.494455°
Long.: -107.566433°
N.: 1611616.2 (COSP)
E.: 2416889.1 (COSP)

BOTTOM HOLE LOCATION
802 FSL, 1997 FWL
Lat.: 39.494032°
Long.: -107.561276°
N.: 1611429.0 (COSP)
E.: 2418340.6 (COSP)

SEE CONSTRUCTION LAYOUT PLAT
FOR VISIBLE IMPROVEMENTS
WITHIN 500' OF THIS LOCATION

EXISTING GROUND ELEV.: 6129.9
PROPOSED PAD ELEV.: 6130.6

- LEGEND -

- FIELD LOCATED SECTION MONUMENTS AS DESCRIBED
- FIELD SURVEYED WELL LOCATION
- CALCULATED BOTTOM HOLE LOCATION
- CALCULATED SECTION CORNER LOCATION

SURVEYORS STATEMENT

I, MICHAEL J. LANGHORNE, A REGISTERED LAND SURVEYOR IN THE STATE OF COLORADO DO HEREBY CERTIFY THAT THE SURVEY SHOWN HEREON WAS PREPARED UNDER MY DIRECT SUPERVISION AND HAS BEEN STAKED ON THE GROUND AS SHOWN ON THE PLAT AND CHECKING THAT THIS MAP IS A TRUE REPRESENTATION THEREOF.

Michael J. Langhorne

MICHAEL J. LANGHORNE, COLORADO REGISTRATION NO. 36572
FOR AND ON BEHALF OF
BOOKCLIFF SURVEY SERVICES, INC.

REFERENCES

- 1) Corrective Dependent Resurvey T. 6 S., R. 91 W., 6th P.M (BLM PLAT)
- 2) U.S.G.S. QUAD: Gibson Gulch, CO

NOTES

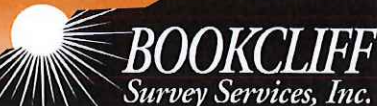
- 1) ELEVATIONS BASED ON N.A.V.D. 1988 PUBLISHED COORDINATES.
- 2) LATITUDES AND LONGITUDES ARE BASE ON NAD 83, PUBLISHED COORDINATES
- 3) STATE PLANE COORDINATES ARE BASED ON COLORADO CENTRAL ZONE, U.S. SURVEY FEET.
- 4) ELEVATION MASK SET TO 15"
- 5) GPS OPERATOR J. KIRKPATRICK, OBSERVED A PDOP 1.8 ON SURVEY POINT NUMBER 251.
- 6) SURFACE AND BOTTOM HOLE LOCATIONS ARE MEASURED 90° FROM SECTION LINES.

WELL LOCATION PLAT Prepared for:

VANGUARD OPERATING, LLC Vanguard Operating, LLC

SW1/4 SW1/4, SECTION 28
T. 6 S., R. 91 W. of the 6th. P.M.
GARFIELD COUNTY, COLORADO

136 East Third Street
Rifle, Colorado
81650 Ph. (970)
625-2720 Fax (970)
625-2773



SURVEY DATE: 11/15/16
MAP DATE: 11/23/16
SCALE: 1" = 1000'
PLAT: 1 of 10
PROJECT: Vanguard