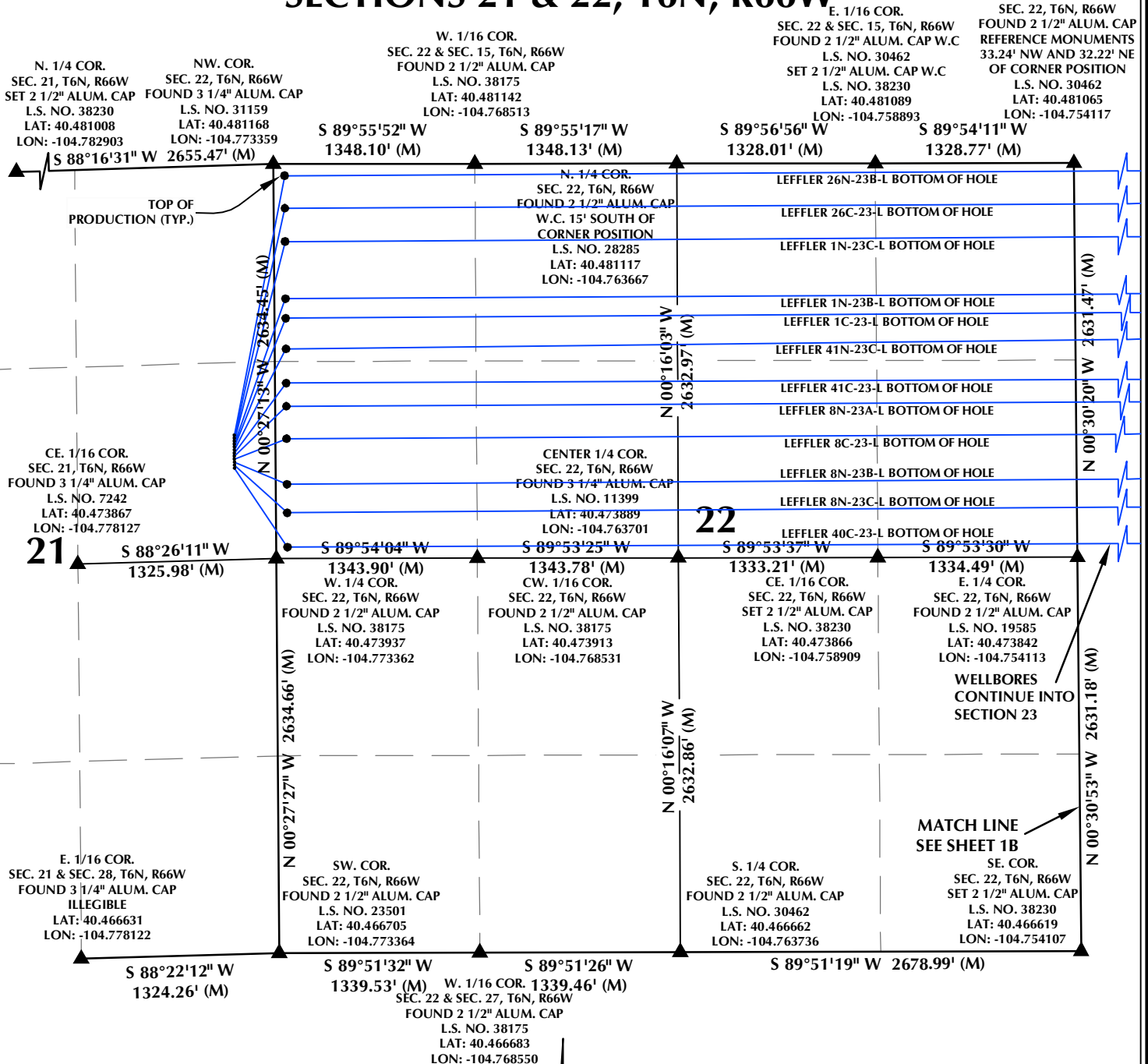
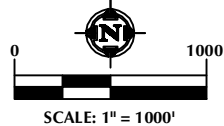


SECTIONS 21 & 22, T6N, R66W



NOTES:

- ▲ INDICATES SECTION CORNER
- INDICATES CALCULATED CORNER
- BASIS OF BEARING DERIVED FROM COLORADO COORDINATE SYSTEM OF 1983 NORTH ZONE.
- ALL MEASURED DISTANCES ARE GRID. COMBINED SCALE FACTOR: .99974122 CALCULATED FROM THE SW. CORNER OF SECTION 21, T6N, R66W
- WELL FOOTAGES ARE MEASURED AT RIGHT ANGLES TO THE SECTION LINES.



WELL PAD - LEFFLER 8-21

MULTI-WELL PLAN
LEFFLER 26N-23B-L, LEFFLER 26C-23-L,
LEFFLER 1N-23C-L, LEFFLER 1N-23B-L,
LEFFLER 1C-23-L, LEFFLER 41N-23C-L,
LEFFLER 41C-23-L, LEFFLER 8N-23A-L,
LEFFLER 8C-23-L, LEFFLER 8N-23B-L,
LEFFLER 8N-23C-L & LEFFLER 40C-23-L
LOCATED IN SECTIONS 21, 22 & 23
T6N, R66W, 6TH P.M.
WELD COUNTY, COLORADO

SYNERGY
RESOURCES CORPORATION
1625 Broadway, Suite 300
Denver, Colorado 80202



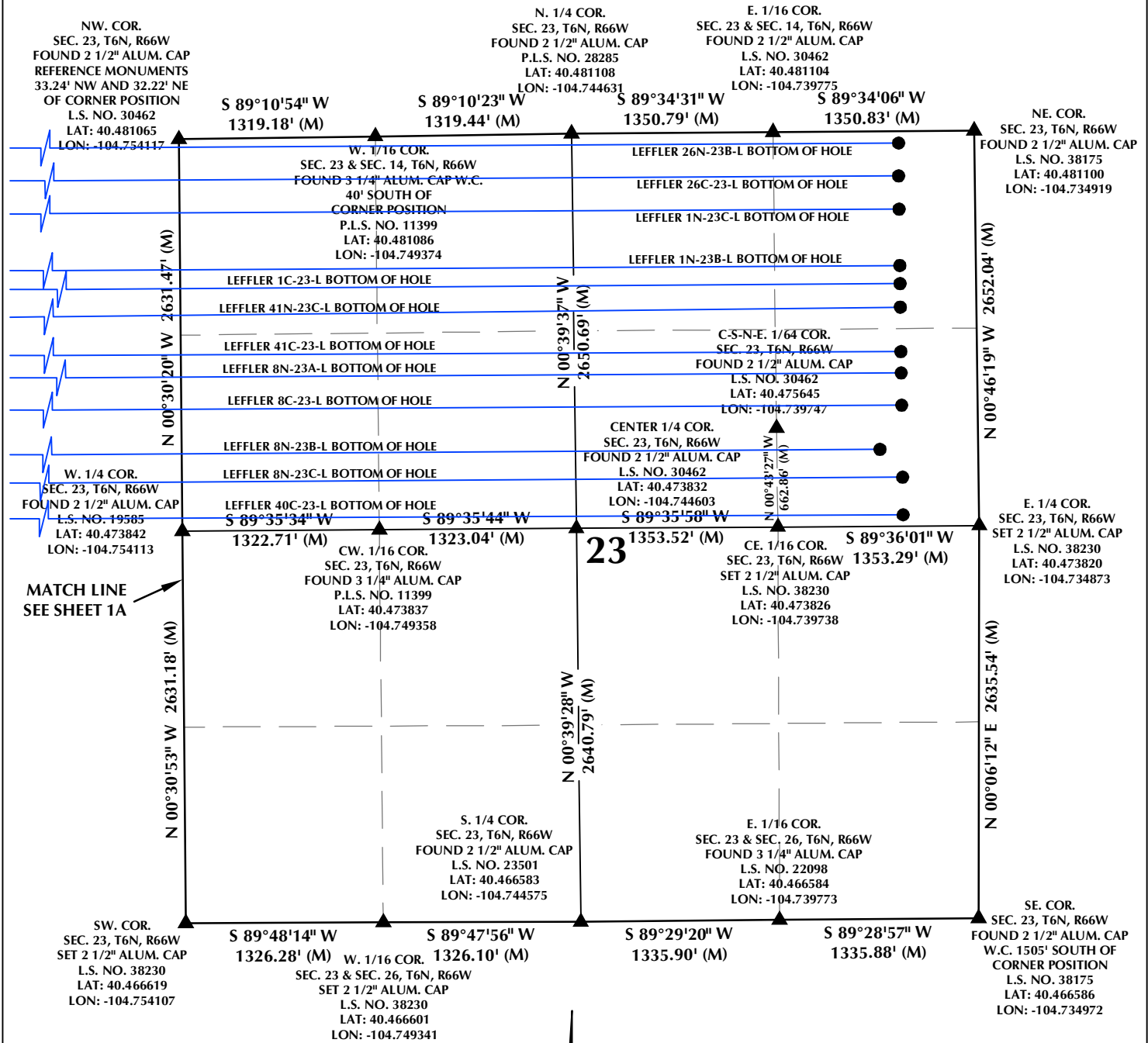
CONSULTING, LLC

SHERIDAN OFFICE
1095 Saberton Avenue
Sheridan, Wyoming 82801
Phone 307-674-0609

LOVELAND OFFICE
1635 Foxtrail Drive, Suite 204
Loveland, Colorado 80538
Phone 970-776-4331

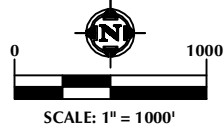
DRAFTED BY:	LMO	CHECKED BY:	JRS	SHEET NO:
DATE DRAFTED:	1/10/17	DATE SURVEYED:	11/29/16	1A
REVISED:		FILE NAME:	16-120	1A OF 3

SECTION 23, T6N, R66W



NOTES:

- ▲ INDICATES SECTION CORNER
- INDICATES CALCULATED CORNER
- BASIS OF BEARING DERIVED FROM COLORADO COORDINATE SYSTEM OF 1983 NORTH ZONE.
- ALL MEASURED DISTANCES ARE GRID. COMBINED SCALE FACTOR: .99974122 CALCULATED FROM THE SW. CORNER OF SECTION 21, T6N, R66W
- WELL FOOTAGES ARE MEASURED AT RIGHT ANGLES TO THE SECTION LINES.



WELL PAD - LEFFLER 8-21

MULTI-WELL PLAN
LEFFLER 26N-23B-L, LEFFLER 26C-23-L,
LEFFLER 1N-23C-L, LEFFLER 1N-23B-L,
LEFFLER 1C-23-L, LEFFLER 41N-23C-L,
LEFFLER 41C-23-L, LEFFLER 8N-23A-L,
LEFFLER 8C-23-L, LEFFLER 8N-23B-L,
LEFFLER 8N-23C-L & LEFFLER 40C-23-L
LOCATED IN SECTIONS 21, 22 & 23
T6N, R66W, 6TH P.M.
WELD COUNTY, COLORADO

SYNERGY
RESOURCES CORPORATION
1625 Broadway, Suite 300
Denver, Colorado 80202



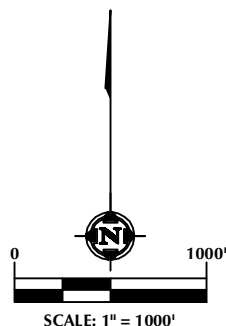
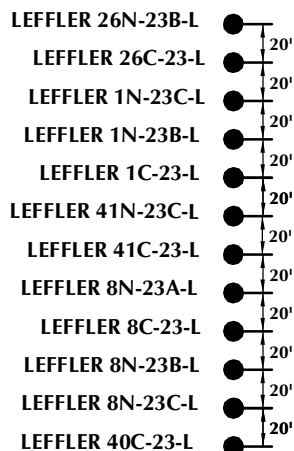
CONSULTING, LLC

SHERIDAN OFFICE
1095 Saberton Avenue
Sheridan, Wyoming 82801
Phone 307-674-0609

LOVELAND OFFICE
1635 Foxtrail Drive, Suite 204
Loveland, Colorado 80538
Phone 970-776-4331

DRAFTED BY:	LMO	CHECKED BY:	JRS	SHEET NO:
DATE DRAFTED:	1/10/17	DATE SURVEYED:	11/29/16	1B
REVISED:		FILE NAME:	16-120	1B OF 3

LEFFLER 8-21




NOTES:

1. ▲ INDICATES SECTION CORNER
2. ● INDICATES CALCULATED CORNER
3. BASIS OF BEARING DERIVED FROM COLORADO COORDINATE SYSTEM OF 1983 NORTH ZONE.
4. ALL MEASURED DISTANCES ARE GRID.
COMBINED SCALE FACTOR: .99974122 CALCULATED FROM THE SW. CORNER OF SECTION 21, T6N, R66W
5. WELL FOOTAGES ARE MEASURED AT RIGHT ANGLES TO THE SECTION LINES.

WELL PAD - LEFFLER 8-21

MULTI-WELL PLAN
LEFFLER 26N-23B-L, LEFFLER 26C-23-L,
LEFFLER 1N-23C-L, LEFFLER 1N-23B-L,
LEFFLER 1C-23-L, LEFFLER 41N-23C-L,
LEFFLER 41C-23-L, LEFFLER 8N-23A-L,
LEFFLER 8C-23-L, LEFFLER 8N-23B-L,
LEFFLER 8N-23C-L & LEFFLER 40C-23-L
LOCATED IN SECTIONS 21, 22 & 23
T6N, R66W, 6TH P.M.
WELD COUNTY, COLORADO

 **SYNERGY**
RESOURCES CORPORATION
1625 Broadway, Suite 300
Denver, Colorado 80202



CONSULTING, LLC

SHERIDAN OFFICE
1095 Saberton Avenue
Sheridan, Wyoming 82801
Phone 307-674-0609

LOVELAND OFFICE
1635 Foxtrail Drive, Suite 204
Loveland, Colorado 80538
Phone 970-776-4331

DRAFTED BY:	LMO	CHECKED BY:	JRS	SHEET NO:
DATE DRAFTED:	1/10/17	DATE SURVEYED:	11/29/16	2
REVISED:		FILE NAME:	16-120	2 OF 3

LEFFLER 8-21

WELL NOTES:

LEFFLER 26N-23B-L

SURFACE:

1801' FNL & 275' FEL
LATITUDE= 40.476206°
LONGITUDE= -104.774350°

TOP OF PRODUCTION:

76' FNL & 75' FWL
LATITUDE= 40.480958°
LONGITUDE= -104.773090°

BOTTOM HOLE:

78' FNL & 510' FEL
LATITUDE= 40.480887°
LONGITUDE= -104.736751°

FORMATION:

NIOBRARA

LEFFLER 26C-23-L

SURFACE:

1821' FNL & 275' FEL
LATITUDE= 40.476151°
LONGITUDE= -104.774350°

TOP OF PRODUCTION:

294' FNL & 75' FWL
LATITUDE= 40.480360°
LONGITUDE= -104.773090°

BOTTOM HOLE:

299' FNL & 510' FEL
LATITUDE= 40.480280°
LONGITUDE= -104.736748°

FORMATION:

CODELL

LEFFLER 1N-23C-L

SURFACE:

1841' FNL & 275' FEL
LATITUDE= 40.476096°
LONGITUDE= -104.774350°

TOP OF PRODUCTION:

516' FNL & 75' FWL
LATITUDE= 40.479750°
LONGITUDE= -104.773090°

BOTTOM HOLE:

522' FNL & 510' FEL
LATITUDE= 40.479668°
LONGITUDE= -104.736744°

FORMATION:

NIOBRARA

LEFFLER 1N-23B-L

SURFACE:

1861' FNL & 275' FEL
LATITUDE= 40.476041°
LONGITUDE= -104.774350°

TOP OF PRODUCTION:

898' FNL & 75' FWL
LATITUDE= 40.478702°
LONGITUDE= -104.773091°

BOTTOM HOLE:

901' FNL & 510' FEL
LATITUDE= 40.478628°
LONGITUDE= -104.736737°

FORMATION:

NIOBRARA

LEFFLER 1C-23-L

SURFACE:

1881' FNL & 275' FEL
LATITUDE= 40.475987°
LONGITUDE= -104.774350°

TOP OF PRODUCTION:

1029' FNL & 75' FWL
LATITUDE= 40.478342°
LONGITUDE= -104.773091°

BOTTOM HOLE:

1023' FNL & 510' FEL
LATITUDE= 40.478293°
LONGITUDE= -104.736735°

FORMATION:

CODELL

LEFFLER 41N-23C-L

SURFACE:

1901' FNL & 275' FEL
LATITUDE= 40.475932°
LONGITUDE= -104.774350°

TOP OF PRODUCTION:

1234' FNL & 75' FWL
LATITUDE= 40.477779°
LONGITUDE= -104.773091°

BOTTOM HOLE:

1180' FNL & 510' FEL
LATITUDE= 40.477862°
LONGITUDE= -104.736732°

FORMATION:

NIOBRARA

LEFFLER 41C-23-L

SURFACE:

1921' FNL & 275' FEL
LATITUDE= 40.475877°
LONGITUDE= -104.774350°

TOP OF PRODUCTION:

1462' FNL & 75' FWL
LATITUDE= 40.477153°
LONGITUDE= -104.773091°

BOTTOM HOLE:

1479' FNL & 510' FEL
LATITUDE= 40.477041°
LONGITUDE= -104.736727°

FORMATION:

CODELL

LEFFLER 8N-23A-L

SURFACE:

1941' FNL & 275' FEL
LATITUDE= 40.475822°
LONGITUDE= -104.774350°

TOP OF PRODUCTION:

1617' FNL & 75' FWL
LATITUDE= 40.476728°
LONGITUDE= -104.773091°

BOTTOM HOLE:

1623' FNL & 510' FEL
LATITUDE= 40.476646°
LONGITUDE= -104.736724°

FORMATION:

NIOBRARA

LEFFLER 8C-23-L

SURFACE:

1961' FNL & 275' FEL
LATITUDE= 40.475767°
LONGITUDE= -104.774350°

TOP OF PRODUCTION:

1834' FNL & 75' FWL
LATITUDE= 40.476132°
LONGITUDE= -104.773092°

BOTTOM HOLE:

1839' FNL & 510' FEL
LATITUDE= 40.476053°
LONGITUDE= -104.736721°

FORMATION:

CODELL

LEFFLER 8N-23B-L

SURFACE:

1981' FNL & 275' FEL
LATITUDE= 40.475712°
LONGITUDE= -104.774350°

TOP OF PRODUCTION:

2138' FNL & 75' FWL
LATITUDE= 40.475298°
LONGITUDE= -104.773092°

BOTTOM HOLE:

2135' FNL & 660' FEL
LATITUDE= 40.475241°
LONGITUDE= -104.737255°

FORMATION:

NIOBRARA

LEFFLER 8N-23C-L

SURFACE:

2001' FNL & 275' FEL
LATITUDE= 40.475657°
LONGITUDE= -104.774350°

TOP OF PRODUCTION:

2329' FNL & 75' FWL
LATITUDE= 40.474774°
LONGITUDE= -104.773092°

BOTTOM HOLE:

2323' FNL & 510' FEL
LATITUDE= 40.474725°
LONGITUDE= -104.736712°

FORMATION:

NIOBRARA

LEFFLER 40C-23-L

SURFACE:

2021' FNL & 275' FEL
LATITUDE= 40.475602°
LONGITUDE= -104.774350°

TOP OF PRODUCTION:

2558' FNL & 75' FWL
LATITUDE= 40.474145°
LONGITUDE= -104.773092°

BOTTOM HOLE:

2575' FNL & 510' FEL
LATITUDE= 40.474033°
LONGITUDE= -104.736708°

FORMATION:

CODELL

WELL PAD - LEFFLER 8-21

MULTI-WELL PLAN
LEFFLER 26N-23B-L, LEFFLER 26C-23-L,
LEFFLER 1N-23C-L, LEFFLER 1N-23B-L,
LEFFLER 1C-23-L, LEFFLER 41N-23C-L,
LEFFLER 41C-23-L, LEFFLER 8N-23A-L,
LEFFLER 8C-23-L, LEFFLER 8N-23B-L,
LEFFLER 8N-23C-L & LEFFLER 40C-23-L
LOCATED IN SECTIONS 21, 22 & 23
T6N, R66W, 6TH P.M.
WELD COUNTY, COLORADO



1625 Broadway, Suite 300
Denver, Colorado 80202



CONSULTING, LLC

SHERIDAN OFFICE
1095 Saberton Avenue
Sheridan, Wyoming 82801
Phone 307-674-0609

LOVELAND OFFICE
1635 Foxtrail Drive, Suite 204
Loveland, Colorado 80538
Phone 970-776-4331

DRAFTED BY:	LMO	CHECKED BY:	JRS	SHEET NO:
DATE DRAFTED:	1/10/17	DATE SURVEYED:	11/29/16	3
REVISED:		FILE NAME:	16-120	3 OF 3