

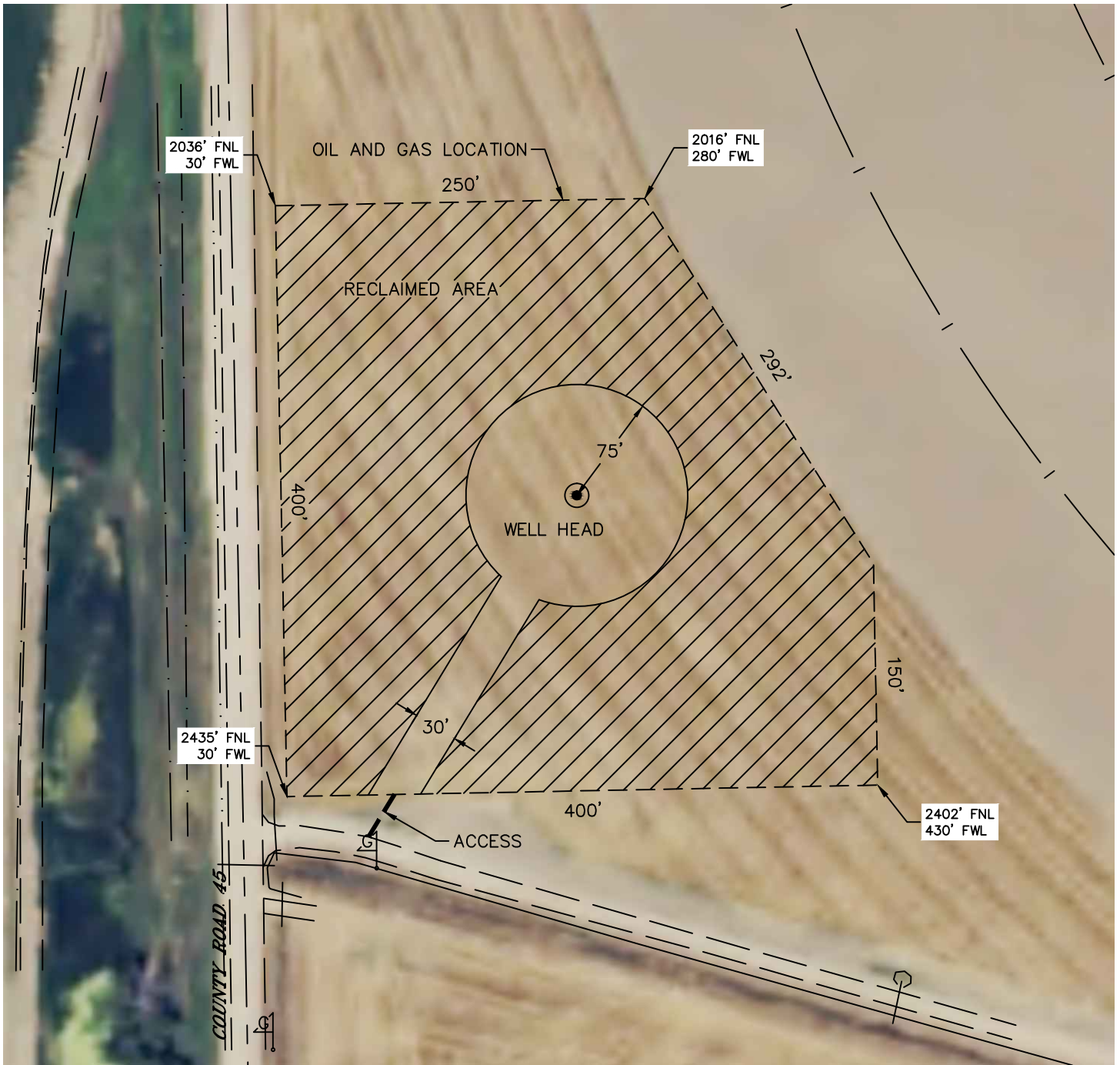


Lat40°, Inc. 6250 W. 10th Street, Unit 2, Greeley, CO 970-515-5294





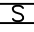


PROPOSED SCALED FACILITY DRAWING

C10B

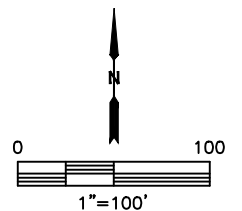
SECTION: 35
TOWNSHIP: 7N
RANGE: 65W
6TH. P.M.
WELD COUNTY, CO



LEGEND

-  PROPOSED WELL HEAD
-  TANK BATTERY
-  WATER TANK
-  WATER VAULT
-  SEPARATOR
-  ECD
-  METER
- VRU- VAPOR RECOVERY UNIT

TOTAL DISTURBED AREA OF LOCATION: ±3.2 ACRES
TOTAL SIZE OF LOCATION AFTER RECLAMATION: ±0.5 ACRES



DATE: 3/8/2017
PROJECT#: 2014178