



Lat40°, Inc. 6250 W. 10th Street, Unit 2, Greeley, CO 970-515-5294

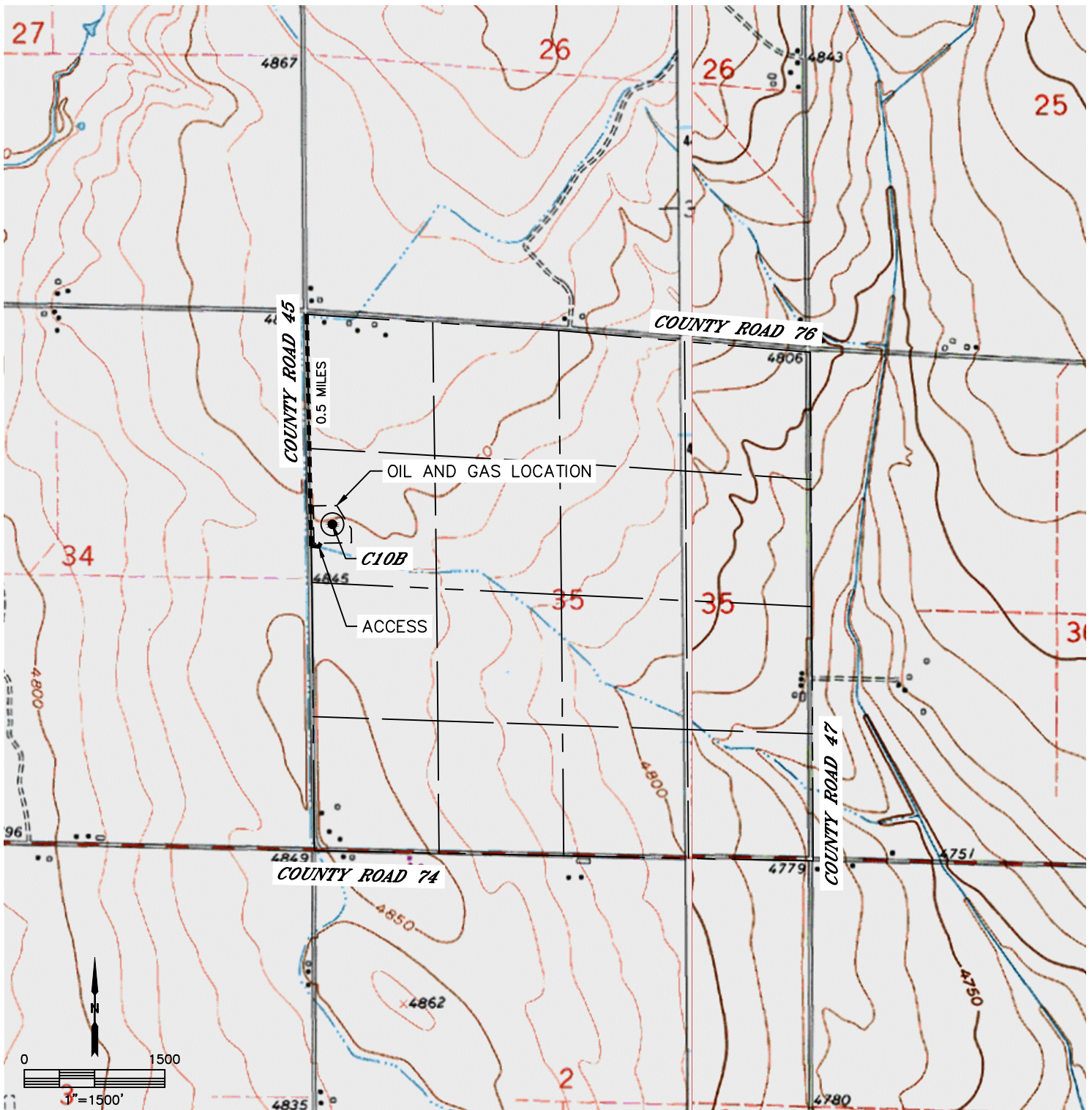
ACCESS ROAD MAP

C10B

SECTION: 35
TOWNSHIP: 7N
RANGE: 65W
6TH. P.M.
WELD COUNTY, CO

DRIVING DIRECTIONS TO C10B:

FROM THE INTERSECTION OF COUNTY ROAD 45 AND COUNTY ROAD 76, DRIVE SOUTH ON COUNTY ROAD 45 FOR 0.5 MILES TO THE PROPOSED ACCESS POINT. AT THE PROPOSED ACCESS POINT TURN EAST ONTO THE EXISTING ACCESS ROAD AND CONTINUE TO THE PROPOSED DRILL PAD LOCATION.



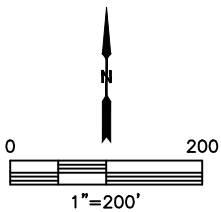
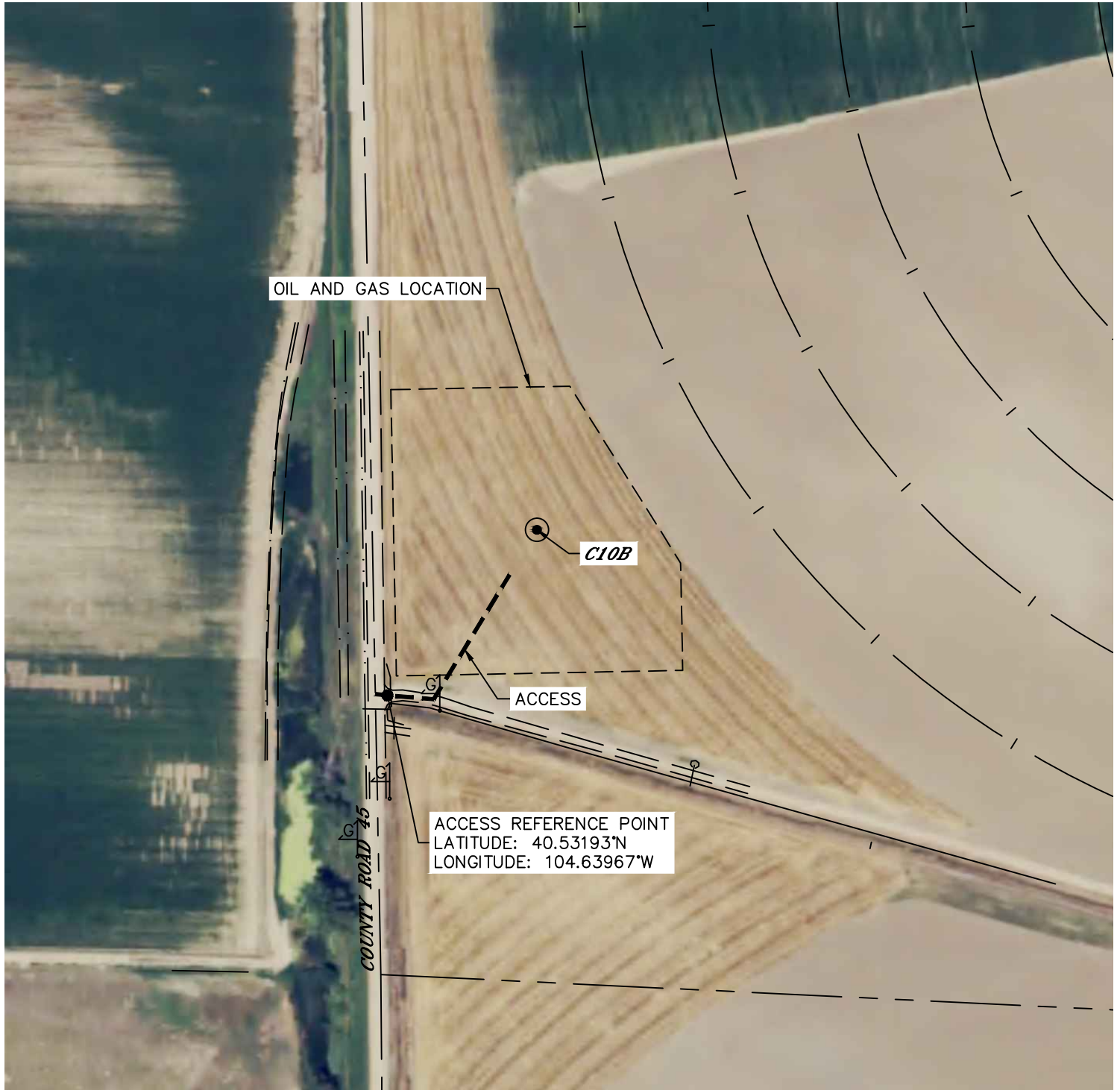


Lat40°, Inc. 6250 W. 10th Street, Unit 2, Greeley, CO 970-515-5294

ACCESS ROAD MAP

C10B

SECTION: 35
TOWNSHIP: 7N
RANGE: 65W
6TH. P.M.
WELD COUNTY, CO





Lat40°, Inc. 6250 W. 10th Street, Unit 2, Greeley, CO 970-515-5294

ACCESS PICTURES

C10B

SECTION: 35
TOWNSHIP: 7N
RANGE: 65W
6TH. P.M.
WELD COUNTY, CO
DATE: 1/25/2017



VIEW NORTH (CR 45)



VIEW EAST



VIEW SOUTH (CR 45)