

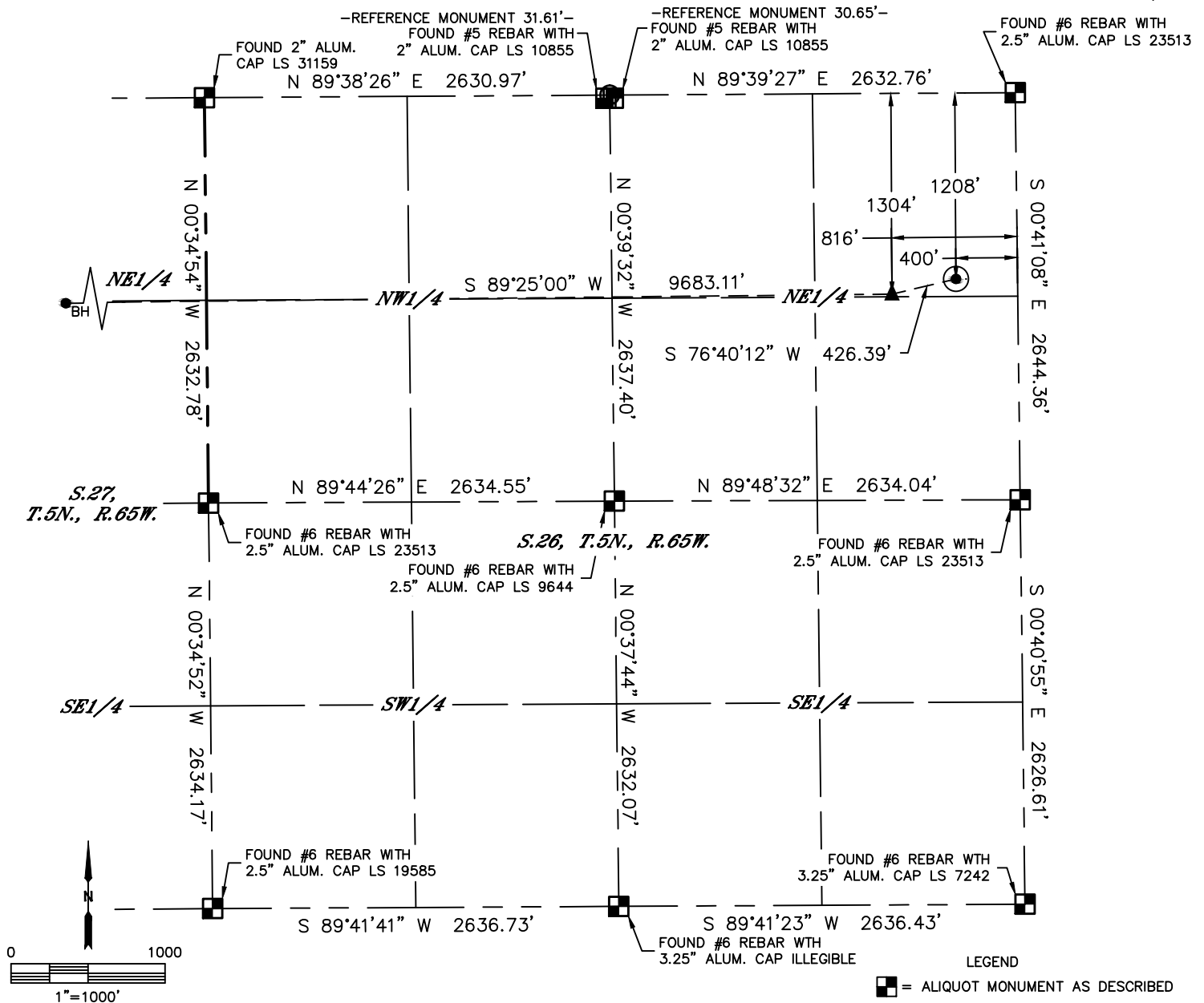


Lat40°, Inc. 6250 W. 10th Street, Unit 2, Greeley, CO 970-515-5294

# WELL LOCATION CERTIFICATE

GEIB 26V-304

SECTION: 26  
TOWNSHIP: 5N  
RANGE: 65W  
6TH. P.M.  
WELD COUNTY, CO



CLIENT: PDC ENERGY INC.				LANDMAN: JEFF HINDMARSH			
INSTRUMENT OPERATOR: BRIAN ROTTINGHAUS				SURVEY DATE: 9/20/2016		SURFACE USE: PASTURE	
SHL FOOTAGE		SHL LAT °	SHL LONG °	SHL PDOP	SHL ELEV (FT.)	SHL 1/4/1/4	SHL S-T-R
1208	FNL	400	FEL	40.37414	-104.62245	2.5	4641 NENE 26-5-65

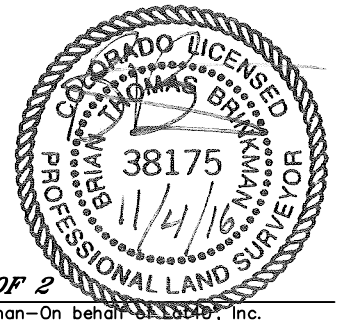
BHL FOOTAGE	BHL LAT °	BHL LONG °	BHL S-T-R	EP LAT °	EP LONG °	EP S-T-R
1336	FNL	50	FWL	40.37387	-104.65868	27-5-65

## NOTE:

- 1) Bearings shown are Grid Bearings of the Colorado State Plane Coordinate System, North Zone, North American Datum 1983. The lineal dimensions as contained herein are based upon the "U.S. Survey Foot."
- 2) Distances to section lines measured at 90 degrees from said section lines.
- 3) Ground elevations are based on an observed GPS elevation (NAVD 1988 DATUM).
- 4) Latitude and Longitude shown are (NAD 83 DATUM).
- 5) IMPROVEMENTS: See LOCATION DRAWING for all visible improvements within 500' of oil and gas location.
- 6) This map does not represent a boundary survey.

NEAREST CULTURAL ITEMS	
BUILDING	±865'S
BUILDING UNIT	±908'S
HIGH OCCUPANCY BUILDING UNIT	5280'+
DESIGNATED OUTSIDE ACTIVITY AREA	5280'+
PUBLIC ROAD (COUNTY ROAD 47)	±387'E
ABOVE GROUND UTILITY	±781'SE
RAILROAD	±721'SE
PROPERTY LINE	±400'E

- LEGEND
- = ALIQUOT MONUMENT AS DESCRIBED
  - = CALCULATED POSITION
  - = SURFACE HOLE LOCATION (SHL)
  - ▲ = ENTRY POINT LOCATION (EP)
  - BH = BOTTOM HOLE LOCATION (BHL)
  - ⊕ = EXISTING WELL
  - ⊖ = ABANDONED WELL



SHEET 1 OF 2

Brian T. Brinkman—On behalf of Lat40°, Inc.  
Colorado Licensed Professional Land Surveyor No. 38175  
DATE: 11/4/2016  
PROJECT#: 2016083

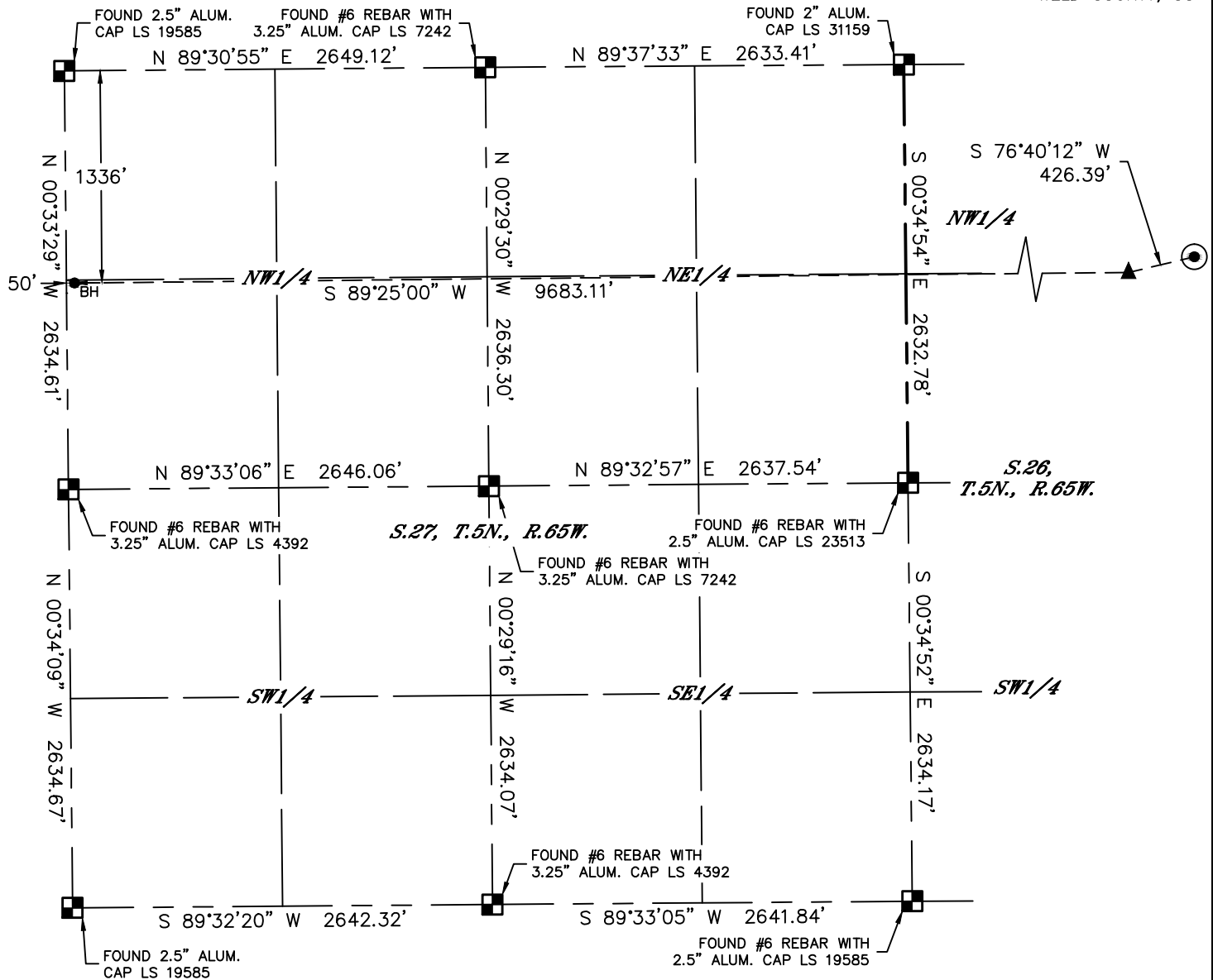


Lat40°, Inc. 6250 W. 10th Street, Unit 2, Greeley, CO 970-515-5294

# WELL LOCATION CERTIFICATE

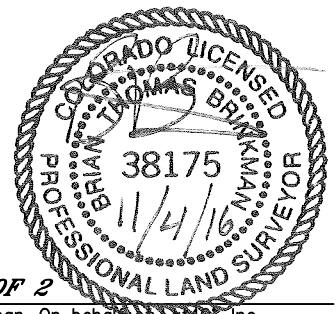
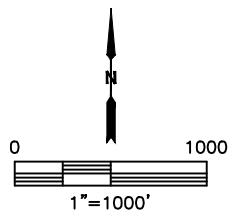
GEIB 26V-304

SECTION: 26  
TOWNSHIP: 5N  
RANGE: 65W  
6TH. P.M.  
WELD COUNTY, CO



## LEGEND

- = ALIQUOT MONUMENT AS DESCRIBED
- = CALCULATED POSITION
- = SURFACE HOLE LOCATION (SHL)
- = ENTRY POINT LOCATION (EP)
- = BOTTOM HOLE LOCATION (BHL)
- = EXISTING WELL
- = ABANDONED WELL



**SHEET 2 OF 2**

Brian T. Brinkman—On behalf of Lat40°, Inc.  
Colorado Licensed Professional Land Surveyor No. 38175  
DATE: 11/4/2016  
PROJECT#: 2016083