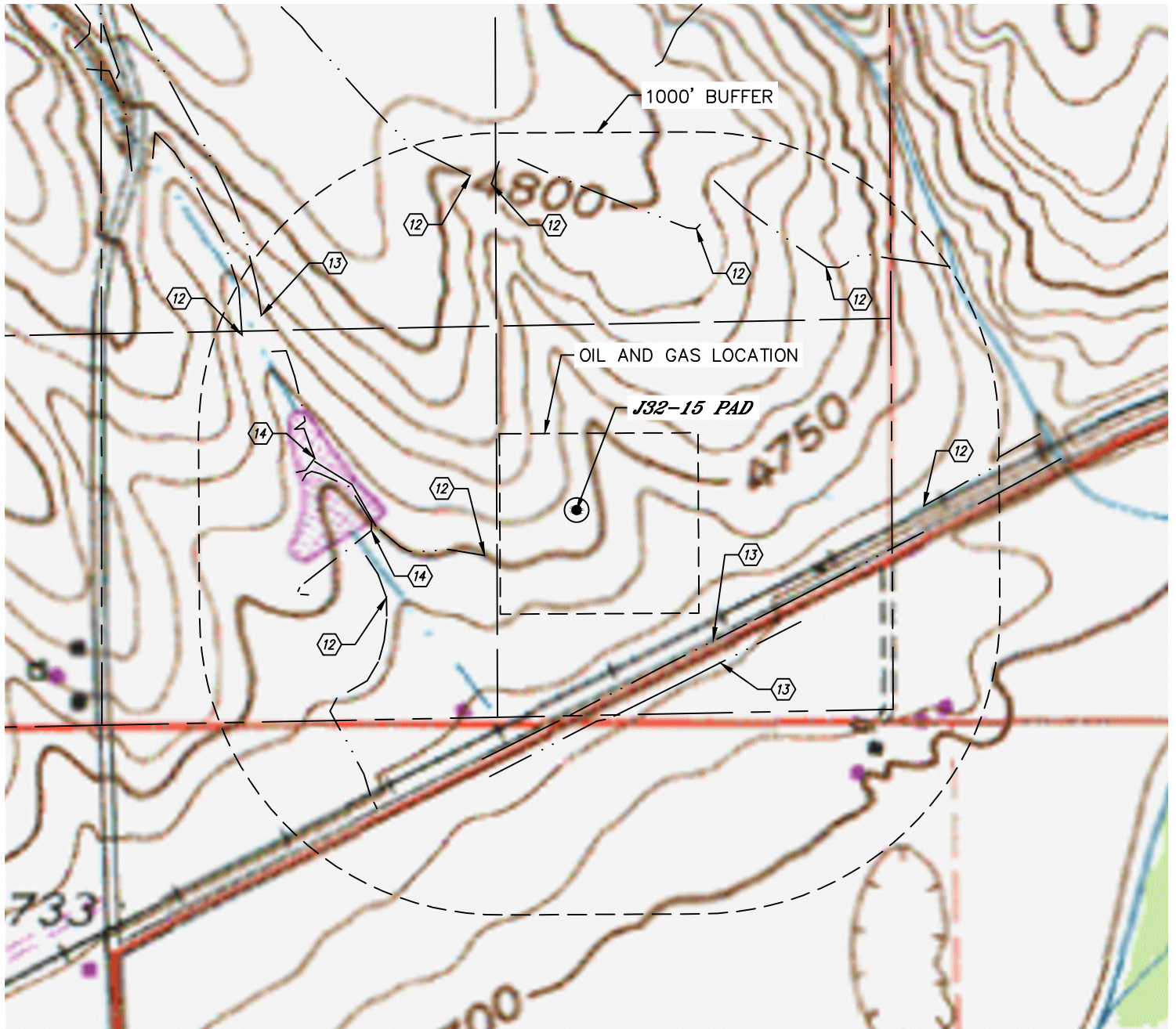




HYDROLOGY MAP

J32-15 PAD

SECTION: 32
TOWNSHIP: 5N
RANGE: 66W
6TH. P.M.
WELD COUNTY, CO



DISTANCES MEASURED FROM THE EDGE OF THE OIL AND GAS LOCATION.

- ⑫ DITCH 51' & 378' W, 678', 830' & 863' N, 697' NE, 750' E, 916' NW
- ⑬ BORROW DITCH 104' & 179' SE, 883' NW
- ⑭ POND 427' & 614' W

