

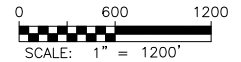
WELL LOCATION CERTIFICATE

AVILA EAST FEDERAL 2920-8CH

SECTION: 32
TOWNSHIP: 12N
RANGE: 65W

LEGEND

- FOUND MONUMENT
- CALCULATED POSITION
- PROPOSED WELL
- BOTTOM HOLE
- ABANDONED WELL
- EXISTING WELL
- TPZ

**NOTES:**

- 1) BEARINGS FOR THIS MAP ARE ASSUMED AND BASED UPON GPS OBSERVATIONS MADE BETWEEN MONUMENTS LOCATED AT THE NORTHWEST CORNER AND NORTHEAST CORNER OF SECTION 32, T.12N., R.65W.
- 2) HORIZONTAL DATUM IS NAD83.
- 3) VERTICAL DATUM IS NAVD88 AND ORIGINATES FROM THE LOCAL C.O.R.S. NETWORK, UTILIZING THE GEOID12A MODEL.
- 4) SEE LOCATION DRAWING FOR VISIBLE IMPROVEMENTS WITHIN 500' OF PROPOSED DISTURBED AREA.
- 5) SURFACE USE: RANGELAND.
- 6) INST. OPERATOR: SCOTT ESTABROOKS

NEAREST CULTURAL ITEMS:

- | | |
|--------------------------------|-----------|
| 1. BUILDING: | 4236'± SW |
| 2. BUILDING UNIT: | 4410'± SW |
| 3. HIGH OCC. BLD. UNIT: | 5280'± |
| 4. DES. OUTSIDE ACTIVITY AREA: | 5280'± |
| 5. PUBLIC ROAD: | 249'± N |
| 6. ABOVE GROUND UTILITY: | 289'± N |
| 7. RAILROAD: | 5280'± |
| 8. PROPERTY LINE: | 365'± N |

NAD83 LATITUDE AND LONGITUDE**SURFACE LOCATION:**

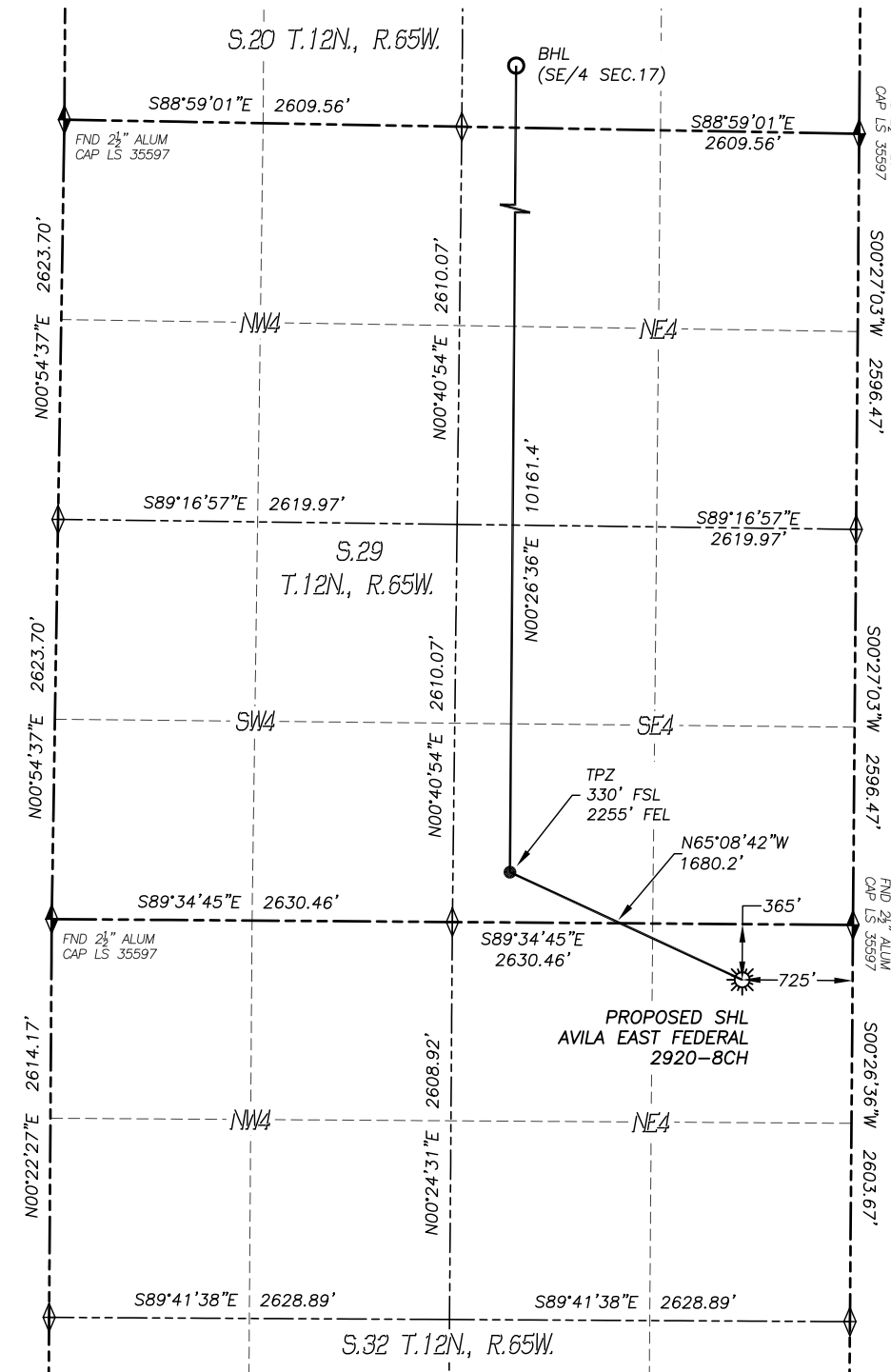
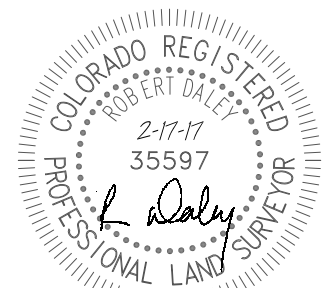
LATITUDE: N40.97011°
LONGITUDE: W104.67890°
ELEVATION: 5977'
PDOP: 1.2
QTR/QTR: NE4/NE4

LANDING POINT:

LATITUDE: N40.97205°
LONGITUDE: W104.68442°

BOTTOM HOLE:

LATITUDE: N40.99993°
LONGITUDE: W104.68413°

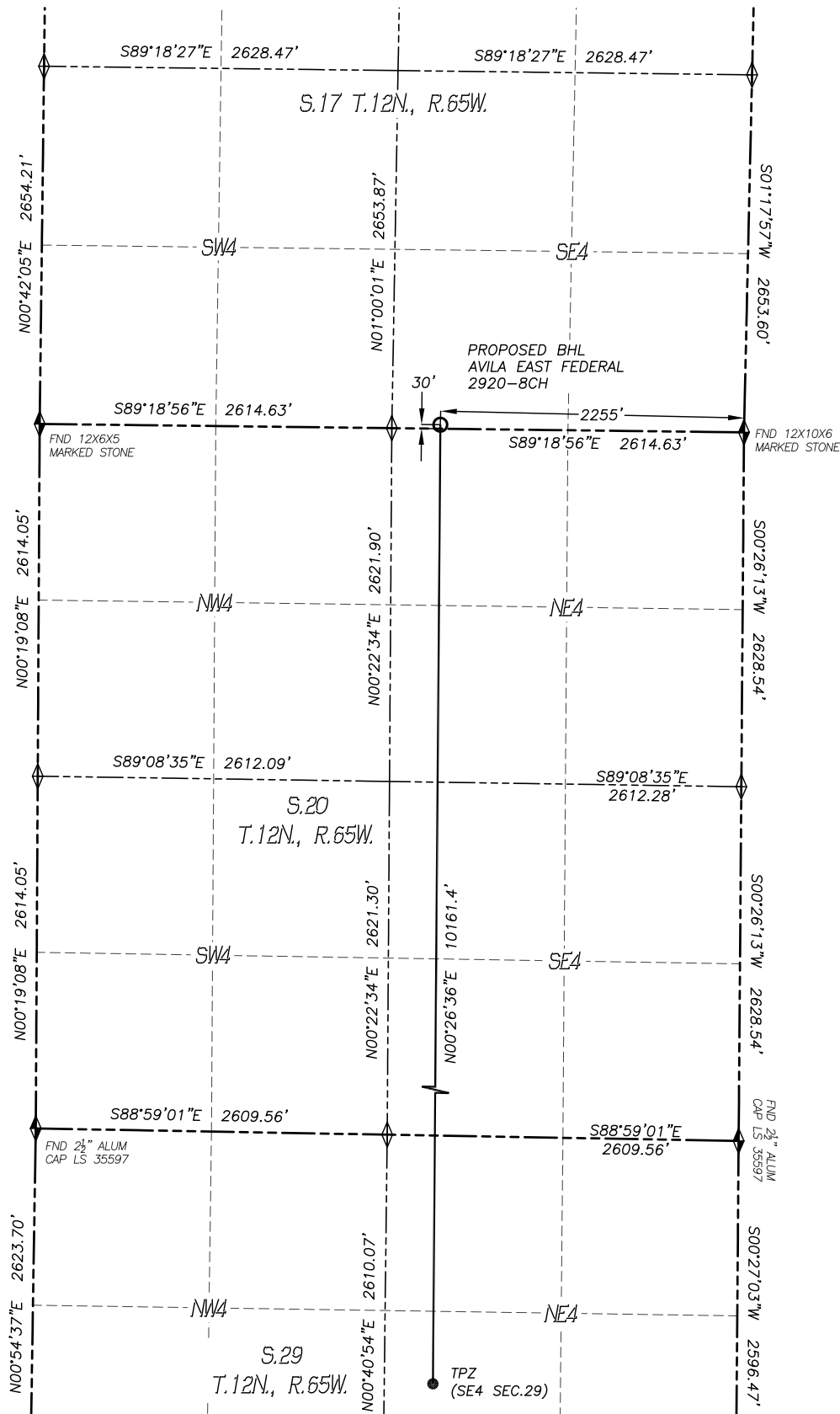


IN ACCORDANCE WITH A REQUEST FROM LONGS PEAK RESOURCES, LLC., DALEY LAND SURVEYING, INC. HAS DETERMINED THE SURFACE LOCATION OF THE AVILA EAST FEDERAL 2920-8CH WELL TO BE 365' FNL, 725' FEL, AS MEASURED AT NINETY (90) DEGREES FROM THE SECTION LINES OF SECTION 32, TOWNSHIP 12 NORTH, RANGE 65 WEST, AND THE BOTTOM HOLE LOCATION TO BE 30' FSL, 2255' FEL, AS MEASURED AT NINETY (90) DEGREES FROM THE SECTION LINES OF SECTION 17, TOWNSHIP 12 NORTH, RANGE 65 WEST, OF THE 6TH PRINCIPAL MERIDIAN, WELD COUNTY, COLORADO.







I HEREBY STATE THAT THIS WELL LOCATION CERTIFICATE WAS PREPARED BY ME OR UNDER MY DIRECT SUPERVISION, THAT THE WORK WAS COMPLETED ON 1/25/2017 FOR AND ON BEHALF OF LONGS PEAK RESOURCES, LLC., AND THAT THIS MAP DOES NOT REPRESENT A BOUNDARY SURVEY, IT IS NOT A LAND SURVEY PLAT OR AN IMPROVEMENT SURVEY PLAT AND IT IS NOT TO BE RELIED UPON FOR THE ESTABLISHMENT OF FENCE, BUILDING OR OTHER FUTURE IMPROVEMENT LINES.

WELL LOCATION CERTIFICATE
AVILA EAST FEDERAL 2920-8CH

SECTION: 32
TOWNSHIP: 12N
RANGE: 65W



LEGEND

- | | |
|---|---------------------|
|  | FOUND MONUMENT |
|  | CALCULATED POSITION |
|  | PROPOSED WELL |
|  | BOTTOM HOLE |
|  | ABANDONED WELL |
|  | EXISTING WELL |
| TPZ | TOP PRODUCING ZONE |

