

NOTES:

- Contours shown at 2' intervals.
- Grid lines shown at 20' intervals.

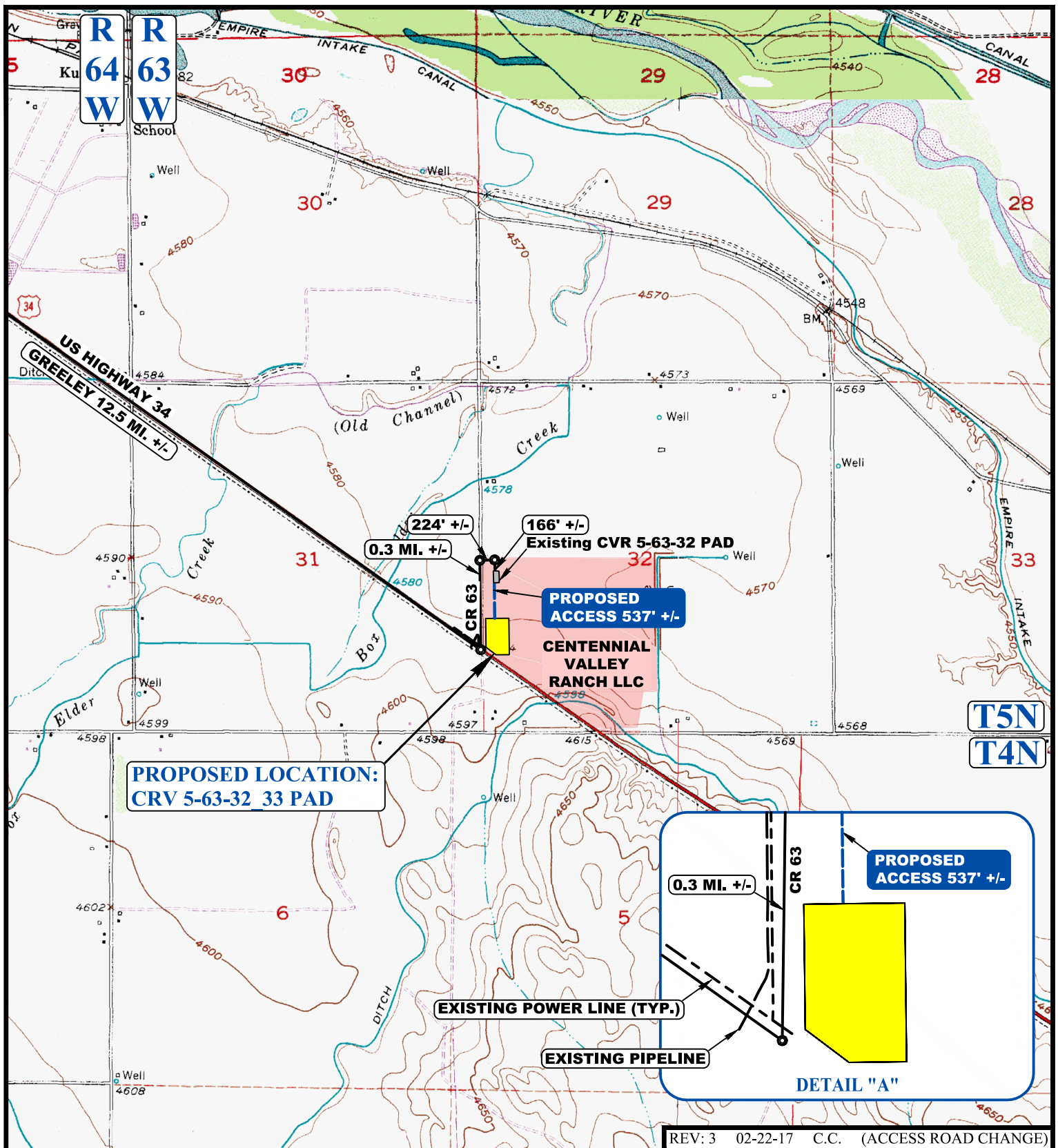
UELTS, LLC
Corporate Office * 85 South 200 East
Vernal, UT 84078 * (435) 789-1017

BILL BARRETT CORPORATION

CVR 5-63-32 33 PAD
NW 1/4 SW 1/4, SECTION 32, T5N, R63W, 6th P.M.
WELD COUNTY, COLORADO

SURVEYED BY	Z.B., B.B.	05-05-16	SCALE
DRAWN BY	K.B.	06-22-16	1" = 60'

INTERIM RECLAMATION PLAN **FIGURE #3**



NOTE: PARCEL DATA SHOWN HAS BEEN OBTAINED FROM VARIOUS SOURCES AND SHOULD BE USED FOR MAPPING, GRAPHIC AND PLANNING PURPOSES ONLY. NO WARRANTY IS MADE BY UINTAH ENGINEERING AND LAND SURVEYING (UELS) FOR ACCURACY OF THE PARCEL DATA.

LEGEND:

- EXISTING ROAD
- - - PROPOSED ROAD
- - - EXISTING POWER LINE
- - - EXISTING PIPELINE



UELS, LLC
Corporate Office * 85 South 200 East
Vernal, UT 84078 * (435) 789-1017



BILL BARRETT CORPORATION

CVR 5-63-32 33 PAD
NW 1/4 SW 1/4, SECTION 32, T5N, R63W, 6th P.M.
WELD COUNTY, COLORADO

SURVEYED BY	Z.B., B.B.	05-05-16	SCALE
DRAWN BY	J.L.G.	06-22-16	1 : 24,000
ACCESS ROAD MAP			TOPO B